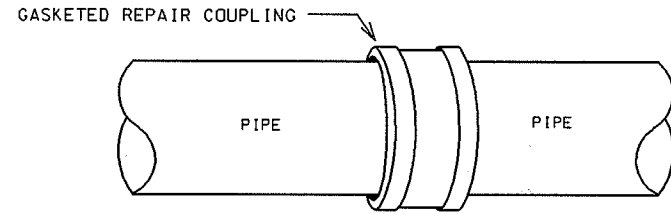
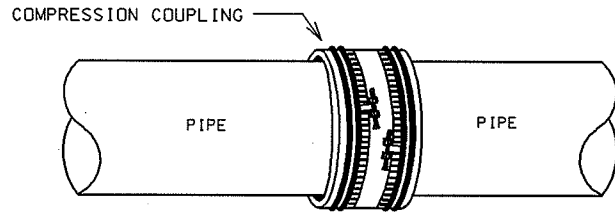


COMPRESSION COUPLING

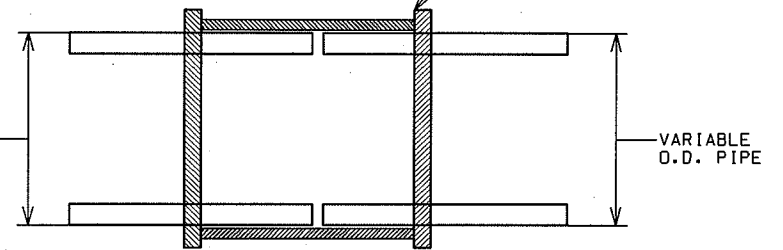
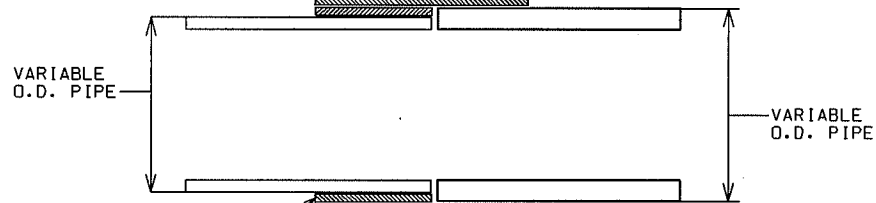
GASKETED REPAIR COUPLING



STAINLESS STEEL BANDS, ASTM A-167

COMPRESSION COUPLING, CONFORMING TO ASTM C-594 TYPE B

GASKETED REPAIR COUPLING CONFORMING TO ASTM D3034 SDR 35, ASTM F679, AND ASTM F2336



STAINLESS STEEL SHEAR RING, ASTM A-167, FOR USE ON 8" AND LARGER SIZE PIPE

TRANSITIONAL BUSHING TO CONFORM TO ASTM C-594 TYPE B. TO BE USED WHEN PIPES OF DIFFERENT MATERIAL AND DIFFERENT OUTSIDE DIAMETERS (O.D.) ARE TO BE CONNECTED

5.3.3

2004

CITY OF MADISON
ENGINEERING DIVISION

COUPLING
DETAILS

STANDARD DETAIL DRAWING 5.3.3