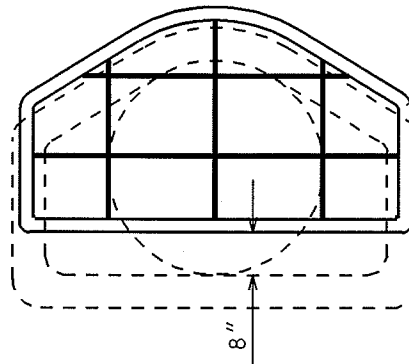
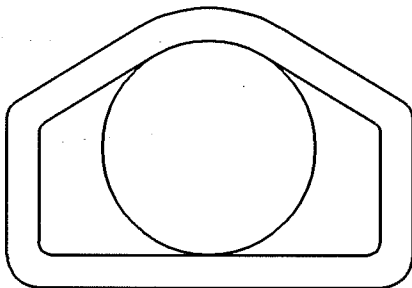


PROVIDE 2 ADDITIONAL  
CONNECTIONS WHEN  
PIPE IS 36" OR LARGER

1" DIA.  
STANDARD  
STEEL PIPE



THE CONTRACTOR SHALL BOLT THE PIPE GATE  
TO THE CONCRETE ENDWALL WITH FOUR  $\frac{3}{8}$ " X 6"  
MACHINE BOLTS WITH NUTS ON INSIDE WALL.

**PAINING SPECIFICATIONS**

FOR PAINTING REQUIREMENTS, SEE SECTION 506.2 (b)  
STRUCTURAL STEEL PAINT-EPOXY  
SYSTEM FOR STORM SEWER GRATES/GATES

2004

CITY OF MADISON  
ENGINEERING DIVISION

RCP AE  
GATE

STANDARD DETAIL DRAWING 5.6.1