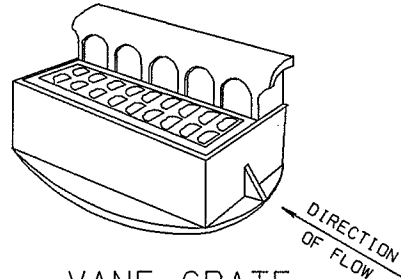


5.7.25

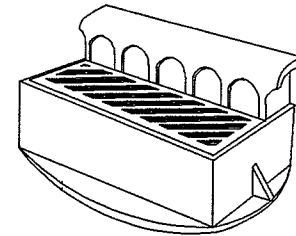


VANE GRATE
FOR TYPE "S" INLET
(R-3281-AL OR -AR)

MEASURES $28\frac{3}{4}'' \times 11\frac{5}{8}'' \times 1\frac{3}{4}''$
APPROXIMATE TOTAL WEIGHT = 480 LBS.

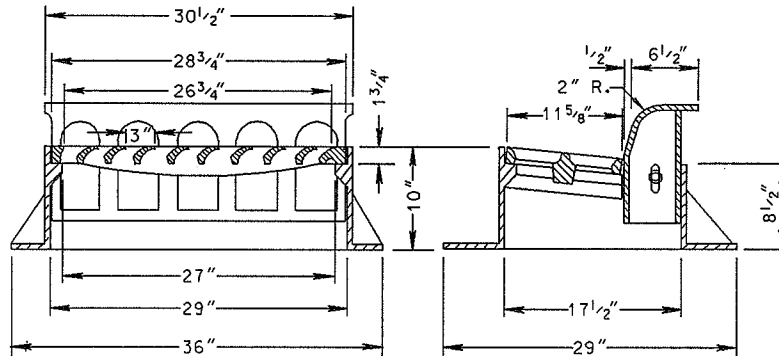
NOTE: GRATE IS NOT REVERSIBLE. R-3281-AL
(LEFT) GRATE IS SHOWN IN DETAILS.
R-3281-AR (RIGHT) GRATE IS SIMILAR.

1" DIAGONAL BARS WITH $1\frac{1}{4}''$ OPENINGS



DIAGONAL GRATE
FOR TYPE "S" INLET
(R-3281-B)

MEASURES $28\frac{3}{4}'' \times 11\frac{5}{8}'' \times 1\frac{3}{4}''$
APPROXIMATE TOTAL WEIGHT = 485 LBS.
DIAGONAL BAR GRATE IS REVERSIBLE
FOR RIGHT OR LEFT HAND FLOW
(RIGHT FLOW IS SHOWN)



NEENAH FOUNDRY CASTINGS

1. CURB INLET FRAME R-3281-B WITH DIAGONAL REVERSIBLE GRATE SHALL BE USED FOR TYPE "S" INLETS AT ALL LOW POINTS AND WHERE LONGITUDINAL ROAD SLOPE IS LESS THAN 1%.
2. CURB INLET FRAME R-3281-A (L OR R) SHALL BE USED FOR TYPE "S" INLETS AT ALL LOCATIONS HAVING A LONGITUDINAL ROAD SLOPE EQUAL TO OR GREATER THAN 1%.

GENERAL NOTES:

1. DETAILS OF CONSTRUCTION, MATERIALS, AND WORKMANSHIP NOT SHOWN ON THIS DRAWING SHALL CONFORM TO THE PERTINENT REQUIREMENTS OF THE STANDARD SPECIFICATIONS AND THE APPLICABLE SPECIAL PROVISIONS.
2. DETAIL DRAWINGS FOR PROPOSED ALTERNATE DESIGNS FOR INLET COVERS SHALL BE SUBMITTED TO THE ENGINEER FOR APPROVAL PROVIDING THAT SUCH ALTERNATE DESIGNS MAKE PROVISION FOR EQUIVALENT CAPACITY AND STRENGTH.
3. ROUND FRAMES AND COVERS SHALL HAVE CONTINUOUSLY MACHINED BALL BEARING SURFACES TO PREVENT ROCKING AND RATTLING.
4. THE ACTUAL WEIGHT OF COVERS MAY VARY WITHIN 5 PERCENT (PLUS OR MINUS) OF THE APPROXIMATE WEIGHT.
5. THE INSIDE DIMENSIONS OF THE STANDARD "H" INLET SHALL BE ALTERED TO 2' -4" X 1' -6" WHEN A TYPE "S" INLET IS SPECIFIED PER STANDARD DETAIL DRAWING 5.7.7
6. INLETS SHALL BE DEPRESSED IN THE CURB FLOW LINE. SEE MADISON STANDARD DETAIL DRAWING 5.5.7

2004

CITY OF MADISON
ENGINEERING DIVISION

R-3281

STANDARD DETAIL DRAWING 5.7.25