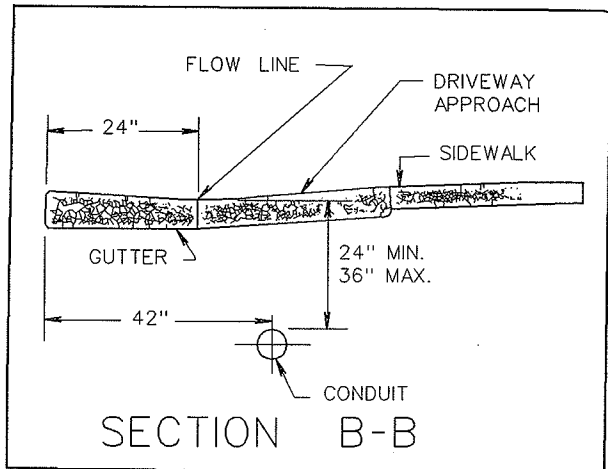
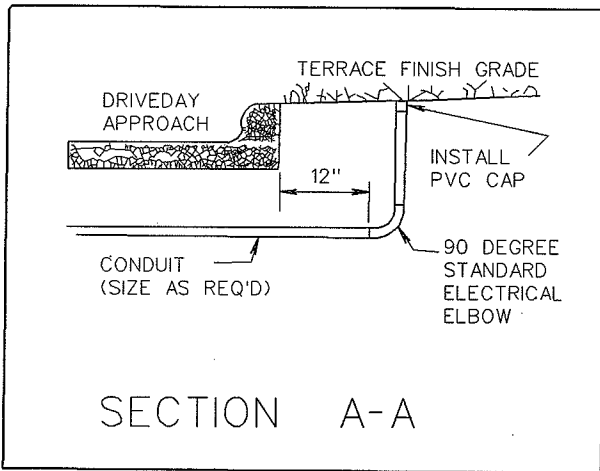
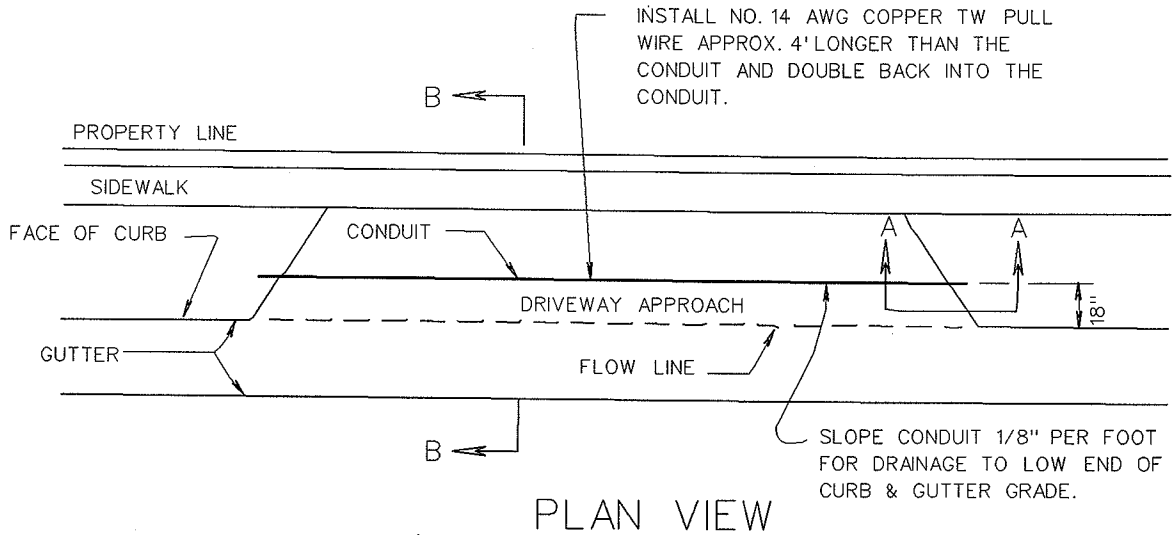


# CONDUIT PLACEMENT DETAILS FOR COMMERCIAL DRIVE APPROACHES



BEFORE CONSTRUCTION, THE CONTRACTOR SHALL CONTACT THE TRAFFIC ENGINEERING SHOP, ELECTRICAL SECTION, (608-266-4767) TO ARRANGE FOR INSPECTION OF THE DUCT PLACEMENT.

2004

CITY OF MADISON TRAFFIC ENGINEERING DIVISION
<b>CONDUIT PLACEMENT DETAILS FOR COMMERCIAL DRIVE APPROACH</b>
STANDARD DETAIL DRAWING 6.09