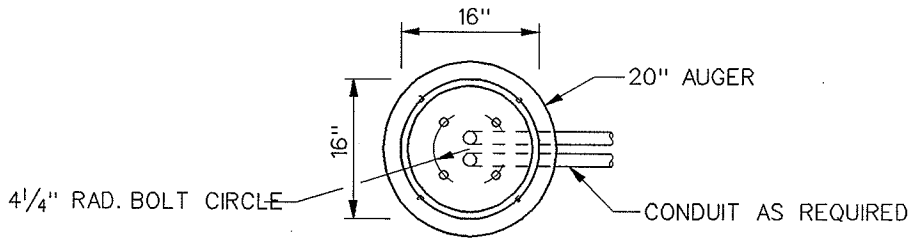
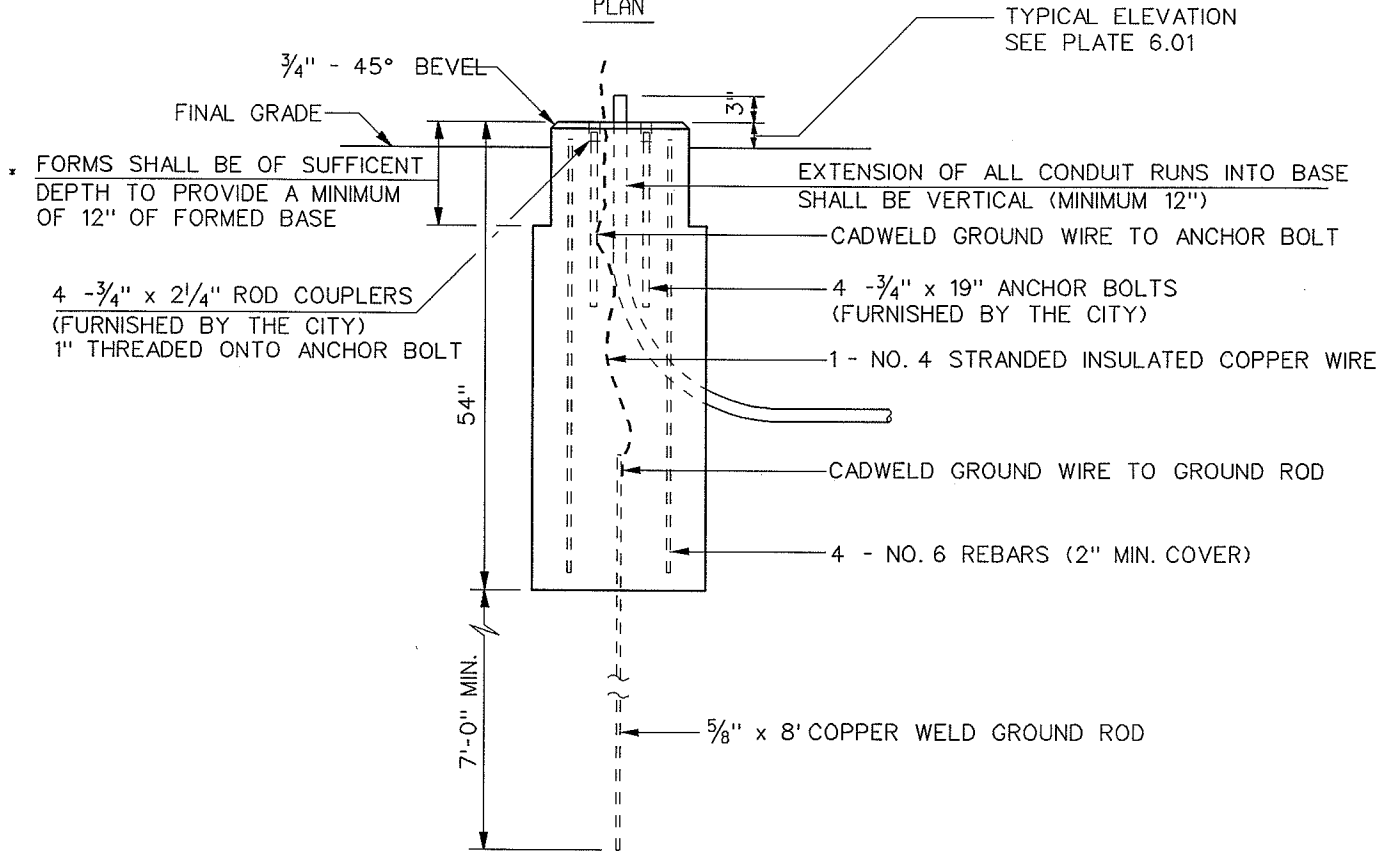


* TOP 12" OF FORMED BASE TO BE ROUND,
16" DIAMETER AS SHOWN, OR DIRECTED BY THE ENGINEER.



PLAN



ELEVATION

NOTES:

RUST, CORROSION AND ANTI-SEIZE PROTECTION SHALL PROVIDED AT ALL THREADED ASSEMBLIES.

ROD COUPLERS SHALL BE SET FLUSH WITH TOP OF BASE.

2004

CITY OF MADISON
TRAFFIC ENGINEERING DIVISION

LB-2
BASE DETAIL

STANDARD DETAIL DRAWING 6.13