

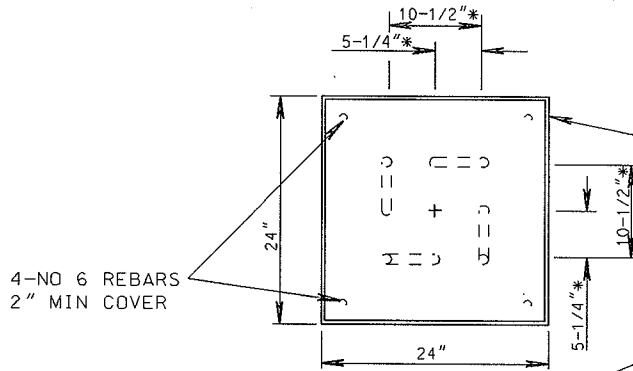
*IF ANOTHER BOLT CIRCLE IS REQUIRED, INSTEAD OF THE 15" BOLT CIRCLE SHOWN, THE FOLLOWING DIMENSIONS SHOULD BE USED

11" BOLT CIRCLE

CENTER TO BOLT 3-7/8"
BOLT TO BOLT 7-3/4"

12-1/2" BOLT CIRCLE

CENTER TO BOLT 4-7/16"
BOLT TO BOLT 8-7/8"



HOLE FOR BASE MAY BE DUG WITH 26" DIAMETER AUGER. THEN THE TOP SHALL FORMED AS A SQUARE

3' OF UNBROKEN GROUND WIRE TO BE LEFT ABOVE CONCRETE BASE FOR USE BY OTHERS

TYPICAL ELEVATION
SEE PLATE 6.01

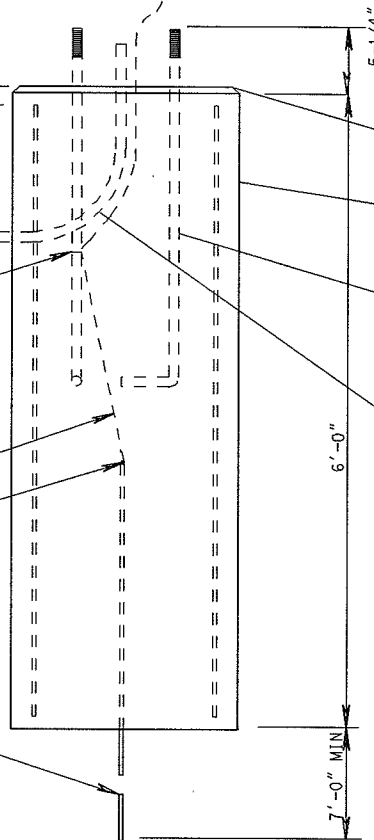
TERRACE GRADE

CLAMP GROUND WIRE TO ANCHOR BOLT W/WATER PIPE TYPE GROUND CLAMP

1-NO 4 STRANDED INSULATED COPPER WIRE

CLAMP GROUND WIRE TO GROUND ROD W/TEAR DROP TYPE CLAMP

5/8" x 8' COPPER WELD GROUND ROD



FORMS SHALL BE OF SUFFICIENT DEPTH TO PROVIDE A MINIMUM OF 12" OF FORMED BASE BELOW GRADE ON LOW SIDE

1-1/4" X 48" ANCHOR BOLTS WITH 6" OF THREAD AT TOP AND 4" L-BEND AT BOTTOM FURNISHED BY CITY

EXTENSION OF ALL CONDUIT RUNS INTO BASE SHALL BE VERTICAL (MINIMUM 12") AND CENTERED

2004

CITY OF MADISON
TRAFFIC ENGINEERING DIVISION

LB-8
BASE DETAIL

STANDARD DETAIL DRAWING 6.19