

Madison, Wisconsin

CITY OF MADISON

CITY ENGINEERING DIVISION

DEPARTMENT OF PUBLIC WORKS

PLAN OF PROPOSED IMPROVEMENT

PUBLIC IMPROVEMENT PROJECT APPROVED

SEPTEMBER 20, 2016

BY THE COMMON COUNCIL OF MADISON, WISCONSIN

PUBLIC IMPROVEMENT DESIGN APPROVED BY:


City Engineer Date 12/8/17

WATER DESIGNED BY:

SEE
INDIVIDUAL
SHEETS

SANITARY LATERAL DESIGNED BY:

SEE
INDIVIDUAL
SHEETS

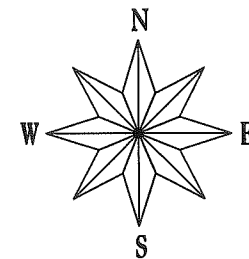
INDEX OF SHEETS

SHEET NO.	TITLE
1	SANITARY LATERAL AND WATER PLAN & PROFILE
C100	

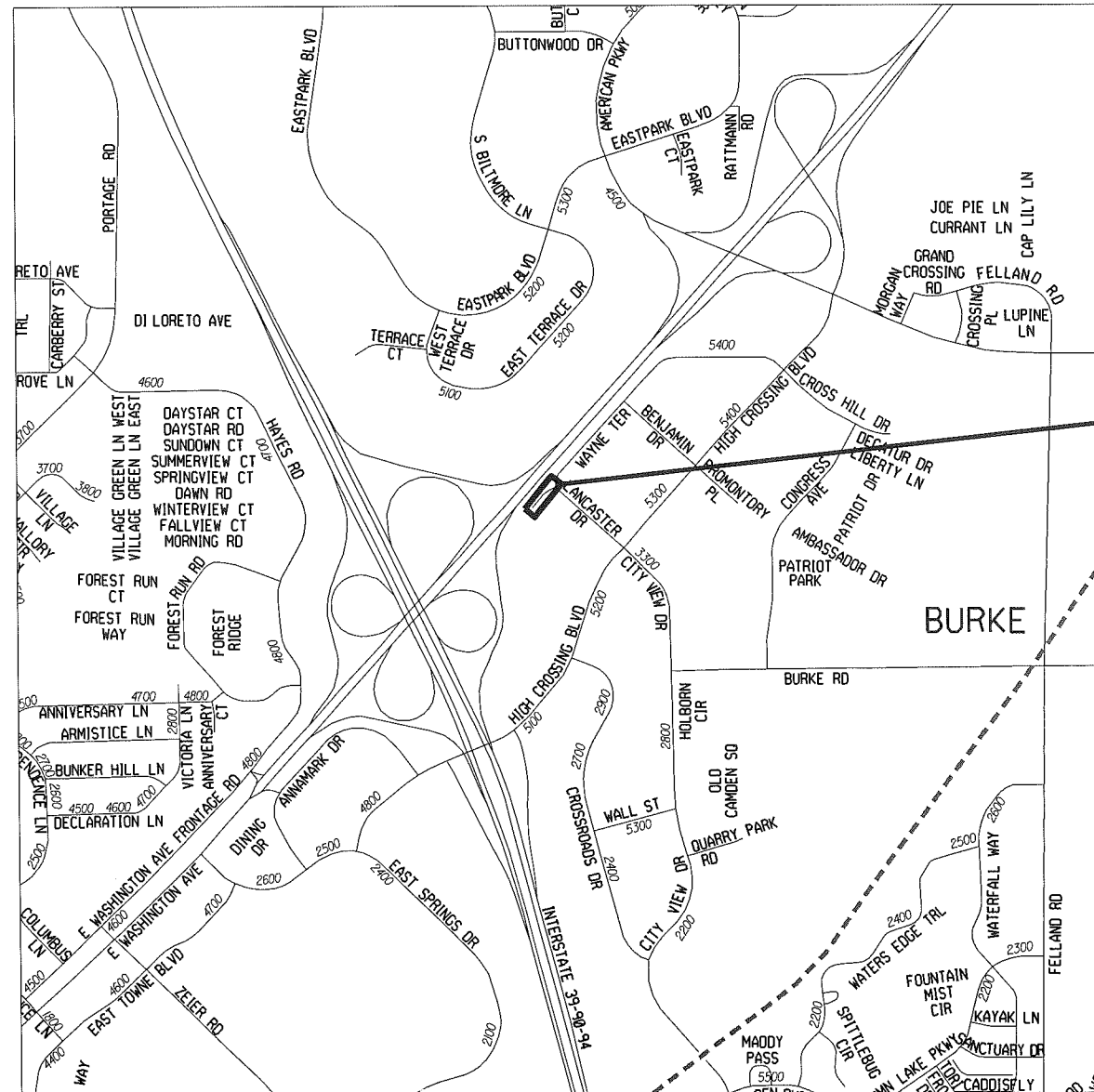
5317 WAYNE TERRACE



CITY PROJECT NO. 11444

CITY CONTRACT NO. 7772



PROJECT
LOCATION



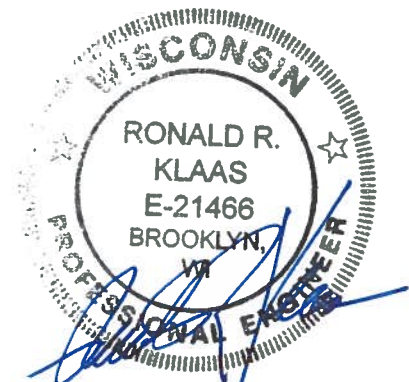
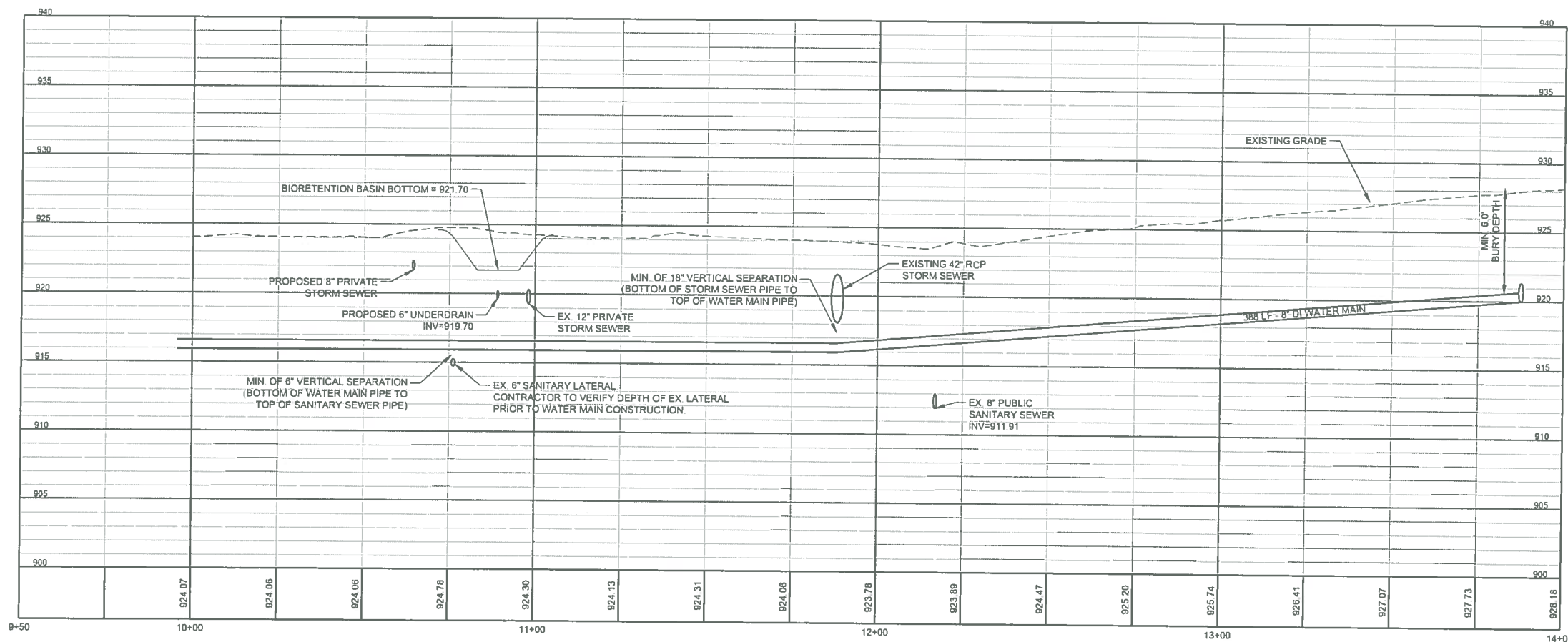
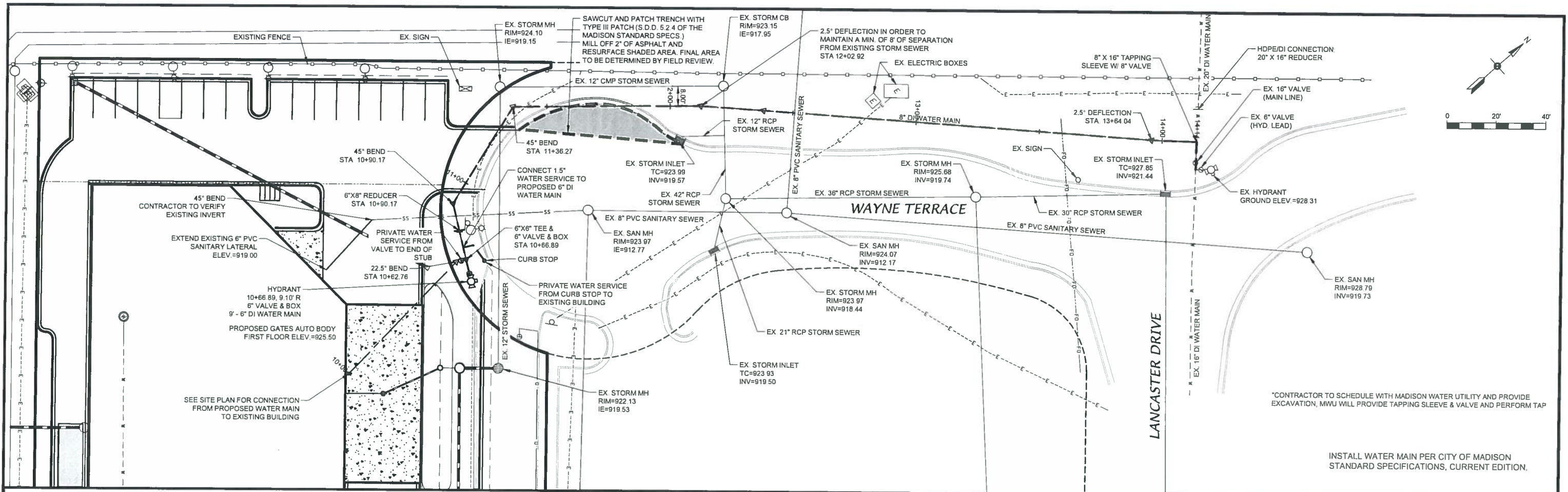
CONVENTIONAL SIGNS	
FIELD VERIFY ALL UTILITY LOCATIONS	
GAS	— G —
STORM SEWER	— ST —
SANITARY SEWER	— SAN —
WATER	— W —
OVERHEAD ELECTRIC	— OH —
POWER POLE	* * *
ADA COMPLIANT RAMP W/ DETECTABLE WARNING FIELD	
COMBUSTIBLE FLUIDS	

PLOT SCALE:

PLOT NAME:

REV. DATE:

ORIGINATOR: CITY OF MADISON, STREETS DIVISION



12-7-17