

Madison, Wisconsin

# CITY OF MADISON

## CITY ENGINEERING DIVISION

### DEPARTMENT OF PUBLIC WORKS

#### PLAN OF PROPOSED IMPROVEMENT


### 715 W. DAYTON STREET (UW SERF PROJECT)

### UTILITIES ONLY PLANS

PROJECT NO. 11580

WORK TO BE COMPLETED UNDER  
PERMIT TO EXCAVATE IN THE RIGHT-OF-WAY

PUBLIC IMPROVEMENT DESIGN  
APPROVED BY:

 12/1/17  
City Engineer Date

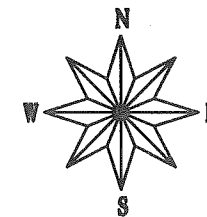
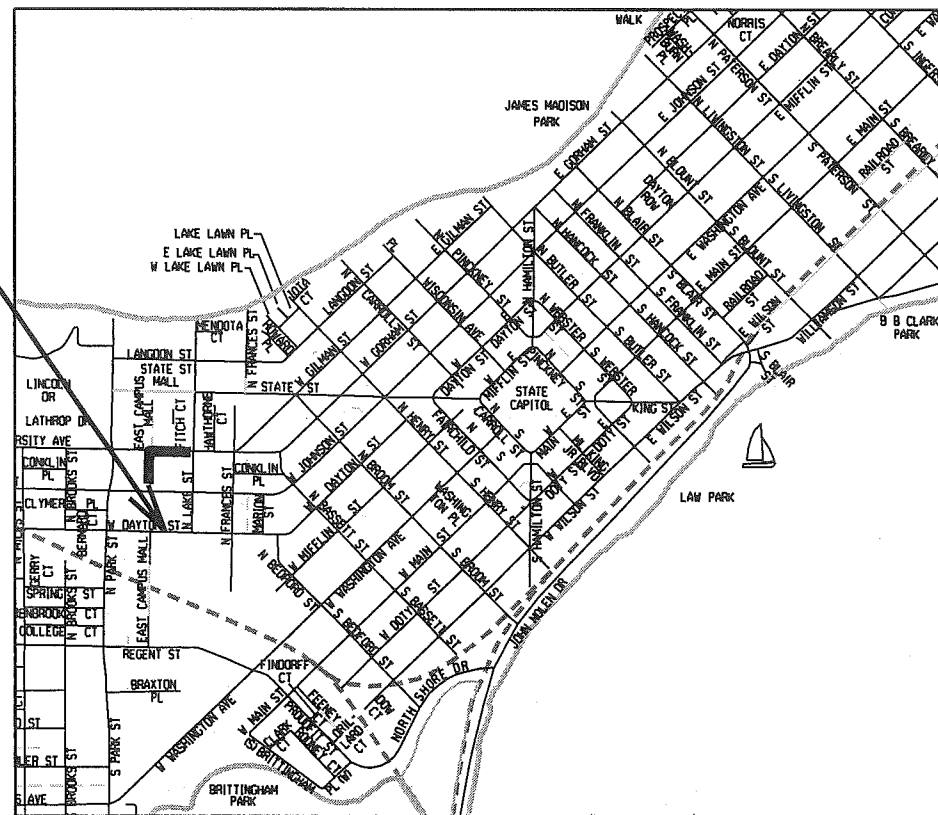
RIGHT-OF-WAY IMPROVEMENTS  
DESIGNED BY:


SEE  
SHEETS

#### INDEX OF SHEETS

SHEET NO.	TITLE & GENERAL NOTES
1-2	UTILITY REMOVAL PLAN
P1	UTILITY PLAN
P2	

PROJECT  
LOCATION



CONVENTIONAL SIGNS	
FIELD VERIFY ALL UTILITY LOCATIONS	
GAS	— G —
STORM SEWER	— ST —
SANITARY SEWER	— SAN —
WATER	— W —
OVERHEAD ELECTRIC	— OH —
BURIED ELECTRIC	— E —
LIGHT POLE	

PLOT SCALE: \_\_\_\_\_

PLOT NAME: \_\_\_\_\_

REV. DATE: \_\_\_\_\_

ORIGINATOR: CITY OF MADISON, STREETS DIVISION

CONTRACTOR/DEVELOPER SHALL SUBMIT A TRAFFIC CONTROL PLAN TO CITY TRAFFIC ENGINEERING AT LEAST 10 WORKING DAYS PRIOR TO THE START OF WORK. WORK WITHIN THE RIGHT-OF-WAY SHALL NOT BEGIN UNTIL THE TRAFFIC CONTROL PLAN IS APPROVED.

ANY PAVEMENT MARKINGS THAT ARE REMOVED OR DAMAGED SHALL BE REPLACED BY THE DEVELOPER/CONTRACTOR AS DIRECTED BY CITY TRAFFIC ENGINEERING.

THE LOCATION AND INFORMATION FOR PROPOSED NEW TREES, IN THE PUBLIC RIGHT OF WAY OR ON PUBLIC LANDS ARE APPROXIMATE AND ARE SHOWN FOR REFERENCE ONLY. COORDINATE WITH CITY FORESTRY FOR LOCATION OF ANY NEW TREE GRATES; SOME EXCAVATION MAY BE NECESSARY WHEN PLACING NEW GRATES TO VERIFY THAT THE SITE IS APPROPRIATE FOR TREE PLANTING.

CONTRACTOR SHALL CONTACT DEAN KAHL WITH CITY FORESTRY (266-4891 OR 266-4816) AT LEAST ONE WEEK PRIOR TO PLANTING TO ALLOW FORESTRY TO MARK THE PLANTING SITES AND REVIEW PLANTING SPECIFICATIONS WITH THE LANDSCAPING CONTRACTOR. TREE PLANTING WITHIN THE PUBLIC RIGHT OF WAY OR ON PUBLIC LANDS SHALL BE APPROVED BY THE CITY FORESTER PRIOR TO INSTALLATION.

NO TREES IN THE RIGHT OF WAY OR ON PUBLIC LANDS SHALL BE TRIMMED, PRUNED, REMOVED OR ADVERSELY AFFECTED IN ANY WAY UNTIL THE DEVELOPER HAS RECEIVED WRITTEN PERMISSION FROM THE CITY ENGINEER OR CITY FORESTER. SAID WRITTEN PERMISSION SHALL INCLUDE LANGUAGE INDICATING THAT SECTION 10.101 OF THE MADISON GENERAL ORDINANCES AND ADMINISTRATIVE PROCEDURE MEMORANDUM NO. 6-2, REFERING TO NOTIFICATION OF PROPERTY OCCUPANTS AND/OR OWNERS, HAS BEEN COMPLIED WITH.

COORDINATE WITH CITY ENGINEERING A MINIMUM OF 21 DAYS IN ADVANCE FOR INSTALLATION OF ASPHALT PAVEMENT FOLLOWING CONSTRUCTION OF NEW CURB & GUTTER AND BASE COURSE.

TRAFFIC CONTROL REQUIREMENTS RELATED TO THIS PROJECT:

SUBMIT A TRAFFIC CONTROL PLAN TO CITY TRAFFIC ENGINEERING AT LEAST 14 DAYS PRIOR TO THE START OF WORK. WORK SHALL NOT PROCEED UNTIL AN APPROVED TRAFFIC CONTROL PLAN IS IN PLACE.

MAINTAIN TWO-WAY TRAVEL ON ALL STREETS AT ALL TIMES.

PROVIDE APPROPRIATE SIGNAGE, INCLUDING FOR ANY BIKE LANE CLOSURES OR DETOURS AS REQUIRED BY THE APPROVED TRAFFIC CONTROL PLAN

INSTALL TEMPORARY TRENCH PATCHES AND TEMPORARY SIDEWALK AS NECESSARY TO MEET THE TRAFFIC CONTROL REQUIREMENTS AS SET FORTH IN THE PERMIT TO EXCAVATE.

ALL PAVEMENT WITHIN THE RIGHT-OF-WAY SHALL BE TYPE C PAVEMENT.

ALL GUTTERS SHALL DRAIN WITH A MINIMUM GRADES OF 0.5% TOWARD STORM SEWER INLETS.

THE CROSS SLOPE OF SIDEWALKS AND BARRIER FREE SIDEWALK CURB RAMPS SHALL BE 1.5%. THE LONGITUDINAL GRADE OF BARRIER FREE SIDEWALK CURB RAMPS SHALL NOT EXCEED 8.33%. ALL SIDEWALK RAMPS SHALL BE CONSTRUCTED ACCORDING TO S.D.D. 3.03. AT ALL OTHER LOCATIONS THE LONGITUDINAL GRADE OF SIDEWALKS SHALL NOT EXCEED 5.0 % OR THE ADJACENT STREET GRADE WHICHEVER IS GREATER NOR BE LESS THAN 0.4% AND SHALL DRAIN TOWARD STORM SEWER INLETS. SIDE SLOPES WITHIN TEN FEET OF A PUBLIC SIDEWALK SHALL NOT EXCEED 4.00:1. ALL SIDEWALK AND SIDEWALK RAMP ELEVATIONS AND GRADES SHALL BE FIELD VERIFIED AND SET TO COMPLY WITH THE CITY OF MADISON STANDARD SPECIFICATIONS AND THE A.D.A. GUIDELINES.

POWER POLES AND OTHER OBSTRUCTIONS SHALL BE MOVED TO PROVIDE 2 FEET MINIMUM OF CLEAR DISTANCE FROM ANY FACE OF CURB OR EDGE OF SIDEWALK.

THERE MAY BE EXISTING UTILITIES OR OTHER FEATURES WHICH ARE EITHER NOT SHOWN OR SHOWN INCORRECTLY ON THIS PLAN. IT IS THE RESPONSIBILITY OF THE DEVELOPER TO LOCATE AND IDENTIFY ALL UTILITIES AND TOPOGRAPHY WHICH MAY AFFECT THE CONSTRUCTION OF THESE IMPROVEMENTS.

ALL PERMANENT SIGNING AND POSTING WILL BE DETERMINED AND PROVIDED BY THE TRAFFIC ENGINEERING DIVISION, FOLLOWING CONSTRUCTION OF THESE IMPROVEMENTS.

THE DEVELOPER SHALL PROVIDE, INSTALL AND MAINTAIN ALL STREET END BARRICADES, SIGNING AND TRAFFIC CONTROL, AS REQUIRED BY THE CITY TRAFFIC ENGINEER.

PAVEMENT SAWCUTS SHALL BE AS DIRECTED BY THE CITY CONSTRUCTION ENGINEER. SAWCUTS SHOWN ON THE PLAN ARE APPROXIMATE.

DAMAGE TO ANY EXISTING CURB, PAVEMENT, SIDEWALK, ETC. THAT IS TO REMAIN SHALL BE REPAIRED BY THE DEVELOPER/CONTRACTOR AS DIRECTED BY THE ENGINEER.

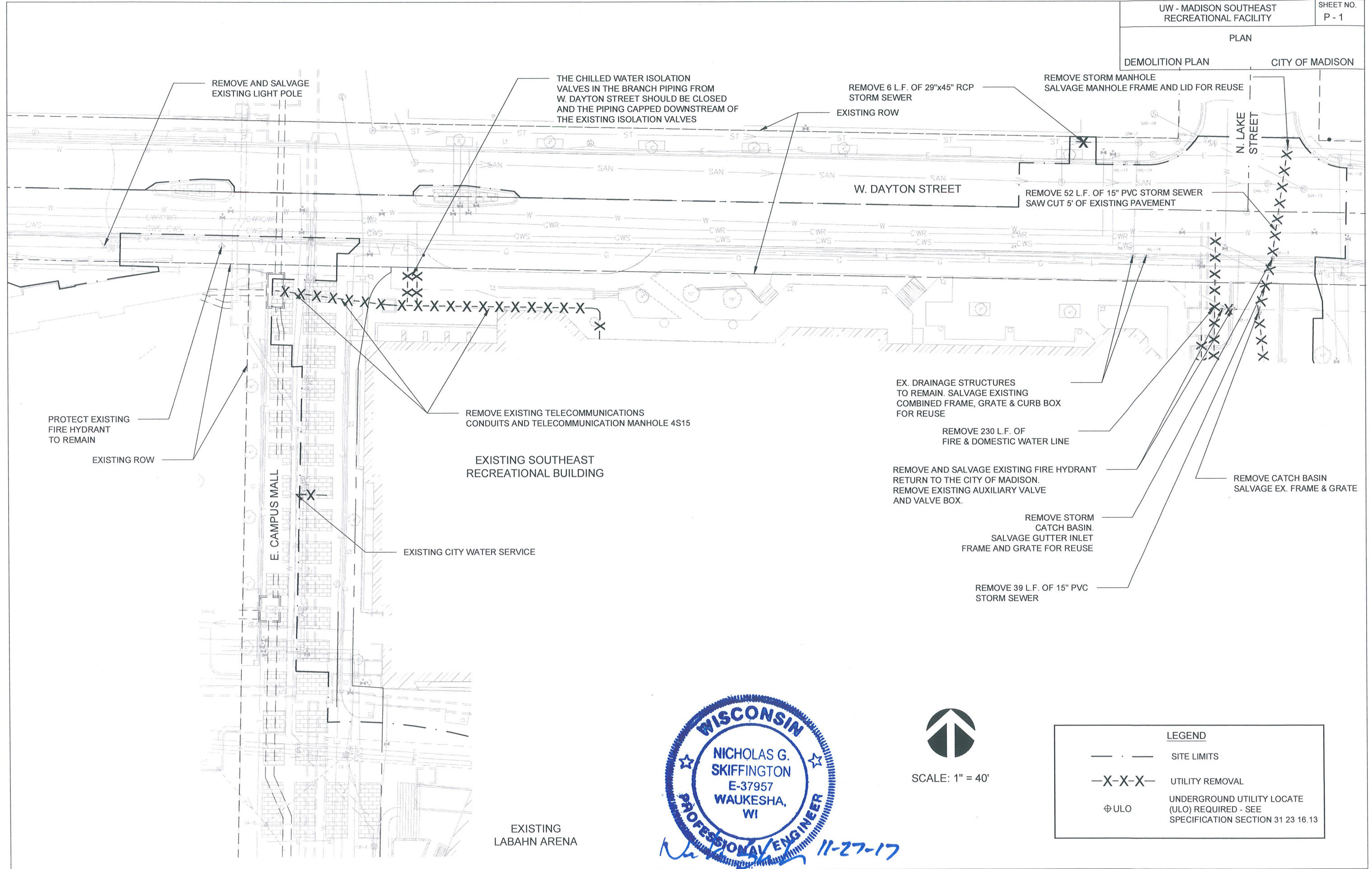
DEVELOPER/CONTRACTOR SHALL COORDINATE WITH ALL UTILITY COMPANIES TO ADJUST STRUCTURES, MANHOLES, HANDHOLES, ETC. AS NEEDED TO MATCH THE GRADE OF THE NEW PAVEMENT.

PLOT SCALE: \_\_\_\_\_

PLOT NAME: \_\_\_\_\_

REV. DATE: \_\_\_\_\_

ORIGINATOR: CITY OF MADISON, STREETS DIVISION



PLOT SCALE:

PLOT NAME:

REV. DATE:

ORIGINATOR: CITY\_OF\_MADISON\_STREETS\_DIVISION

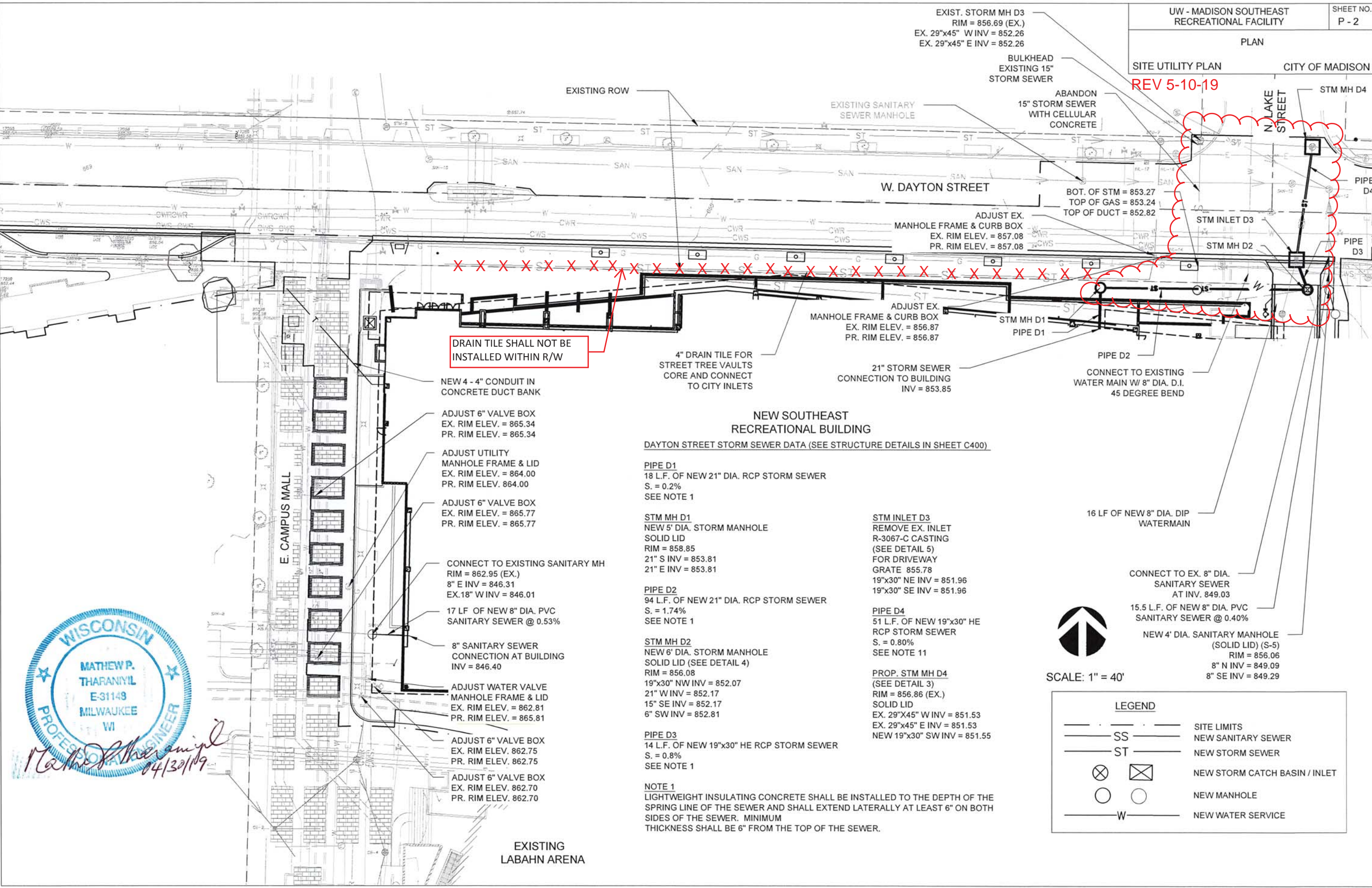


SCALE: 1" = 40'

LEGEND	
---	SITE LIMITS
-X-X-X-	UTILITY REMOVAL
⊕ ULO	UNDERGROUND UTILITY LOCATE (ULO) REQUIRED - SEE SPECIFICATION SECTION 31 23 16.13



REV 5-10-19



DRAIN TILE SHALL NOT BE INSTALLED WITHIN R/W

**NEW SOUTHEAST RECREATIONAL BUILDING**

DAYTON STREET STORM SEWER DATA (SEE STRUCTURE DETAILS IN SHEET C400)

**PIPE D1**  
18 L.F. OF NEW 21" DIA. RCP STORM SEWER  
S. = 0.2%  
SEE NOTE 1

**STM MH D1**  
NEW 5' DIA. STORM MANHOLE  
SOLID LID  
RIM = 858.85  
21" S INV = 853.81  
21" E INV = 853.81

**PIPE D2**  
94 L.F. OF NEW 21" DIA. RCP STORM SEWER  
S. = 1.74%  
SEE NOTE 1

**STM MH D2**  
NEW 6' DIA. STORM MANHOLE  
SOLID LID (SEE DETAIL 4)  
RIM = 856.08  
19"x30" NW INV = 852.07  
21" W INV = 852.17  
15" SE INV = 852.17  
6" SW INV = 852.81

**PIPE D3**  
14 L.F. OF NEW 19"x30" HE RCP STORM SEWER  
S. = 0.8%  
SEE NOTE 1

**NOTE 1**  
LIGHTWEIGHT INSULATING CONCRETE SHALL BE INSTALLED TO THE DEPTH OF THE SPRING LINE OF THE SEWER AND SHALL EXTEND Laterally AT LEAST 6" ON BOTH SIDES OF THE SEWER. MINIMUM THICKNESS SHALL BE 6" FROM THE TOP OF THE SEWER.

**STM INLET D3**  
REMOVE EX. INLET R-3067-C CASTING (SEE DETAIL 5) FOR DRIVEWAY GRATE 855.78  
19"x30" NE INV = 851.96  
19"x30" SE INV = 851.96

**PIPE D4**  
51 L.F. OF NEW 19"x30" HE RCP STORM SEWER  
S. = 0.80%  
SEE NOTE 11

**PROP. STM MH D4**  
(SEE DETAIL 3)  
RIM = 856.86 (EX.)  
SOLID LID  
EX. 29"x45" W INV = 851.53  
EX. 29"x45" E INV = 851.53  
NEW 19"x30" SW INV = 851.55

16 LF OF NEW 8" DIA. DIP WATERMAIN

CONNECT TO EX. 8" DIA. SANITARY SEWER AT INV. 849.03

15.5 L.F. OF NEW 8" DIA. PVC SANITARY SEWER @ 0.40%

NEW 4' DIA. SANITARY MANHOLE (SOLID LID) (S-5)  
RIM = 856.06  
8" N INV = 849.09  
8" SE INV = 849.29



SCALE: 1" = 40'

LEGEND	
---	SITE LIMITS
SS	NEW SANITARY SEWER
ST	NEW STORM SEWER
⊗	NEW STORM CATCH BASIN / INLET
○	NEW MANHOLE
W	NEW WATER SERVICE



PLOT SCALE:

PLOT NAME:

REV. DATE:

ORIGINATOR: CITY\_OF\_MADISON\_STREETS\_DIVISION