

Madison, Wisconsin

# CITY OF MADISON

## CITY ENGINEERING DIVISION

### DEPARTMENT OF PUBLIC WORKS

## PLAN OF PROPOSED IMPROVEMENT

PUBLIC IMPROVEMENT PROJECT APPROVED

MARCH 7, 2017

BY THE COMMON COUNCIL OF MADISON, WISCONSIN

PUBLIC IMPROVEMENT DESIGN APPROVED BY:

*[Signature]* 11/2/17  
City Engineer Date

SANITARY SEWER DESIGNED BY:

*[Signature]*  
10/31/17

STREET PLAN DESIGNED BY:

*[Signature]*  
JOHN P. SAPP  
44054  
Janesville, WI  
10-31-17

STORM & WATER LATERALS DESIGNED BY:

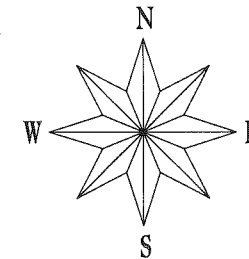
BY DEVELOPER

INDEX OF SHEETS

SHEET NO.	TITLE
1	TITLE
D-1	DETAIL
P-1	STREET PLAN
U-1	UTILITY PLAN

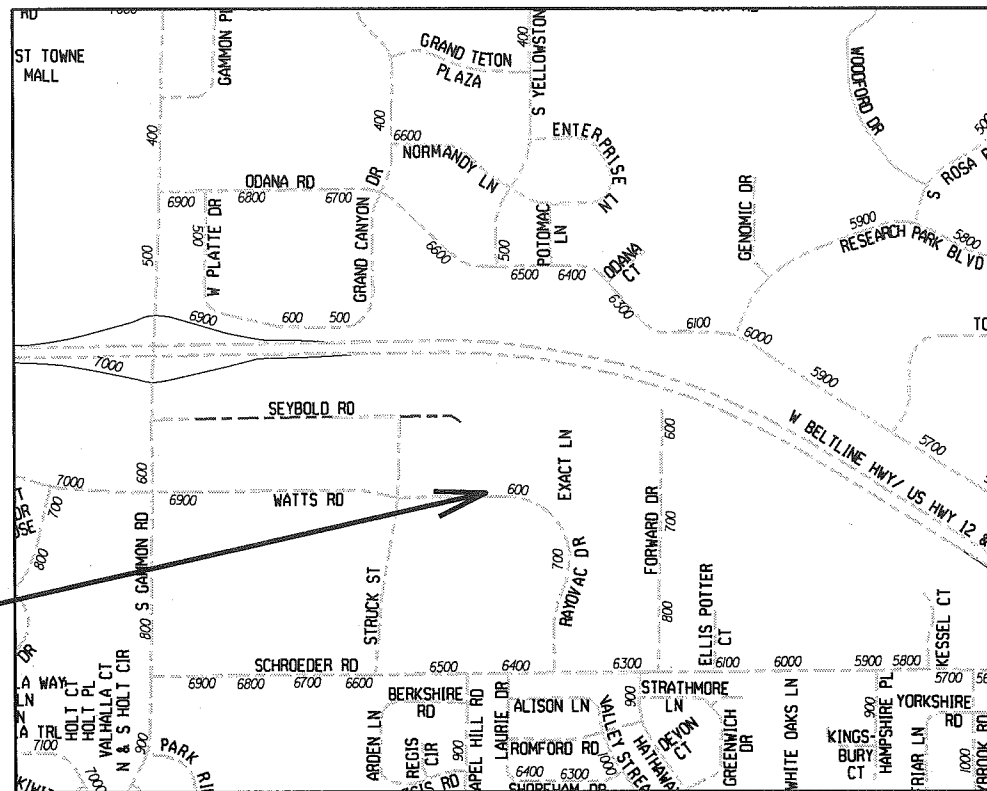
6514 WATTS ROAD  
MADINAH COMMUNITY CENTER

CITY PROJECT NO. 11582  
CITY CONTRACT NO. 7926



CONVENTIONAL SIGNS	
FIELD VERIFY ALL UTILITY LOCATIONS	
GAS	— G —
STORM SEWER	— ST —
SANITARY SEWER	— SAN —
WATER	— W —
OVERHEAD ELECTRIC	— OH —
POWER POLE	⊕
ADA COMPLIANT RAMP W/ DETECTABLE WARNING FIELD	
COMBUSTIBLE FLUIDS	

CONSTRUCTION PROJECT LOCATION

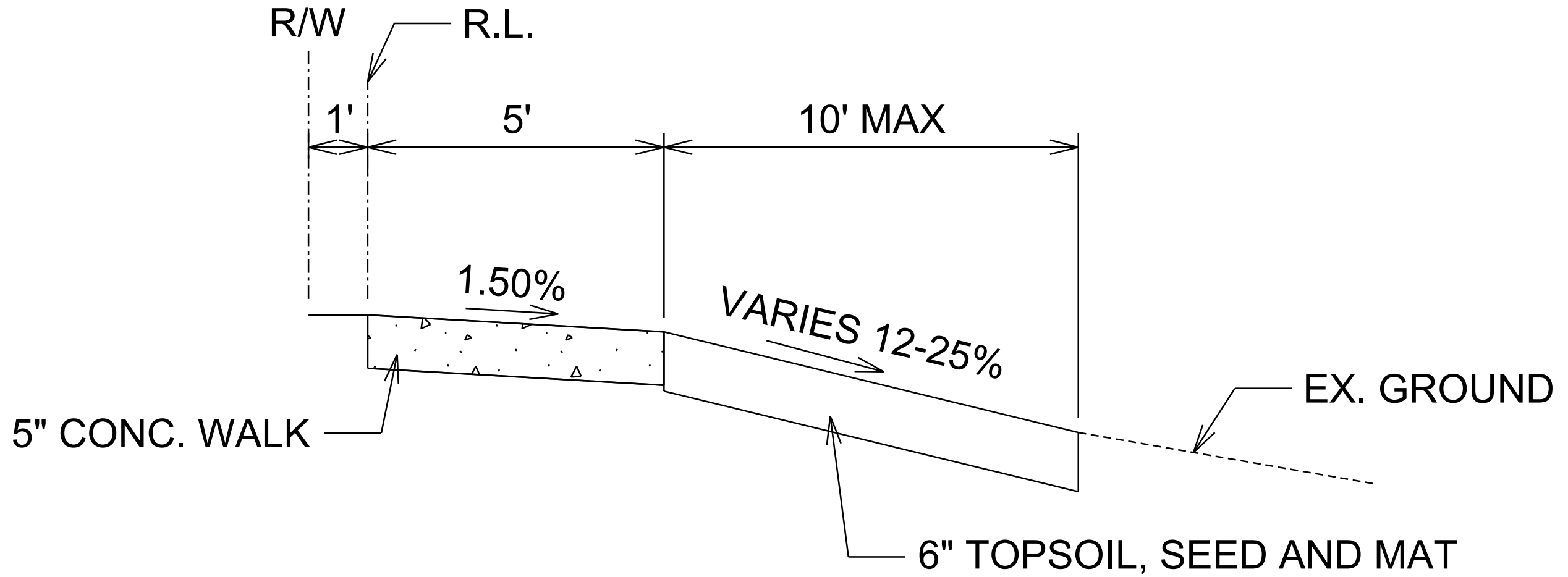


PLOT SCALE:

PLOT NAME:

REV. DATE:

ORIGINATOR: CITY OF MADISON, STREETS DIVISION



SIDEWALK TYPICAL SECTION

PLOT SCALE: \_\_\_\_\_

PLOT NAME: \_\_\_\_\_

REV. DATE: \_\_\_\_\_

ORIGINATOR: CITY OF MADISON, STREETS DIVISION

PLAN AND PROFILE

SIDEWALK

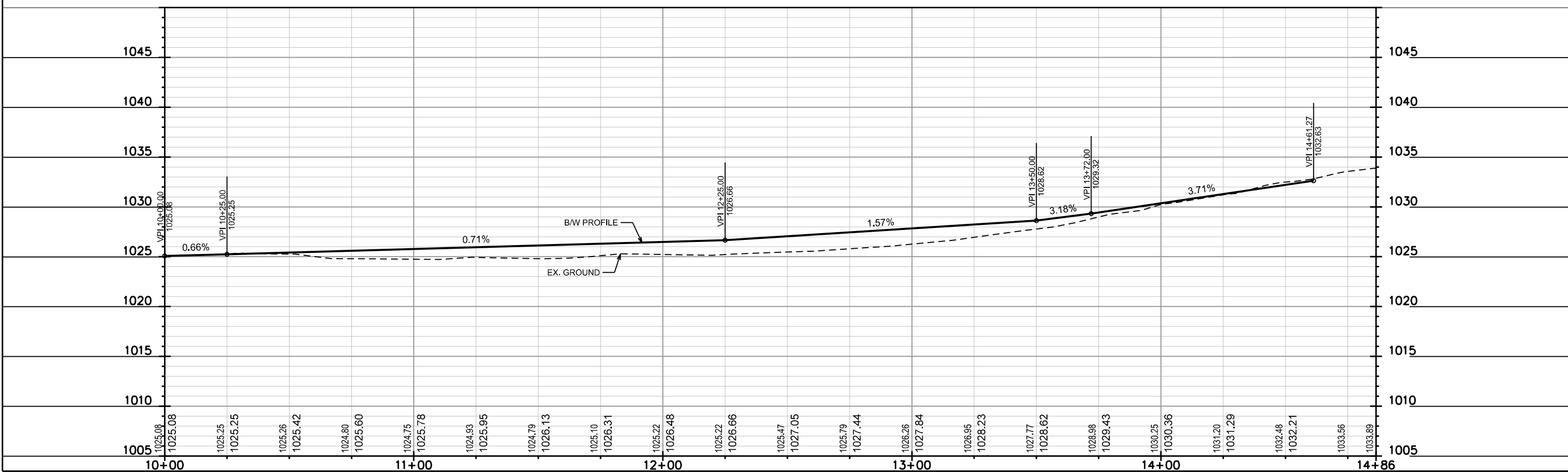
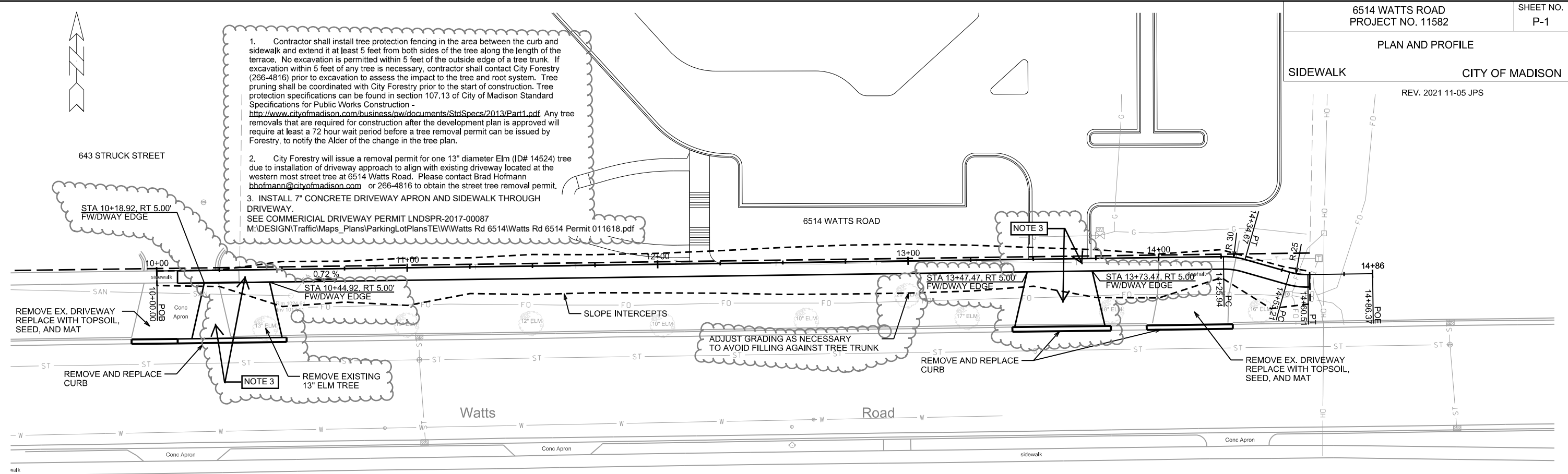
CITY OF MADISON

REV. 2021 11-05 JPS

1. Contractor shall install tree protection fencing in the area between the curb and sidewalk and extend it at least 5 feet from both sides of the tree along the length of the terrace. No excavation is permitted within 5 feet of the outside edge of a tree trunk. If excavation within 5 feet of any tree is necessary, contractor shall contact City Forestry (266-4816) prior to excavation to assess the impact to the tree and root system. Tree pruning shall be coordinated with City Forestry prior to the start of construction. Tree protection specifications can be found in section 107.13 of City of Madison Standard Specifications for Public Works Construction - <http://www.cityofmadison.com/business/pw/documents/StdSpecs/2013/Part1.pdf>. Any tree removals that are required for construction after the development plan is approved will require at least a 72 hour wait period before a tree removal permit can be issued by Forestry, to notify the Alder of the change in the tree plan.

2. City Forestry will issue a removal permit for one 13" diameter Elm (ID# 14524) tree due to installation of driveway approach to align with existing driveway located at the western most street tree at 6514 Watts Road. Please contact Brad Hofmann [bhofmann@cityofmadison.com](mailto:bhofmann@cityofmadison.com) or 266-4816 to obtain the street tree removal permit.

3. INSTALL 7" CONCRETE DRIVEWAY APRON AND SIDEWALK THROUGH DRIVEWAY.  
SEE COMMERCIAL DRIVEWAY PERMIT LNDSPR-2017-00087  
M:\DESIGN\Traffic\Maps\_Plans\ParkingLotPlans\TE\Watts Rd 6514\Watts Rd 6514 Permit 011618.pdf



PLOT SCALE: \_\_\_\_\_

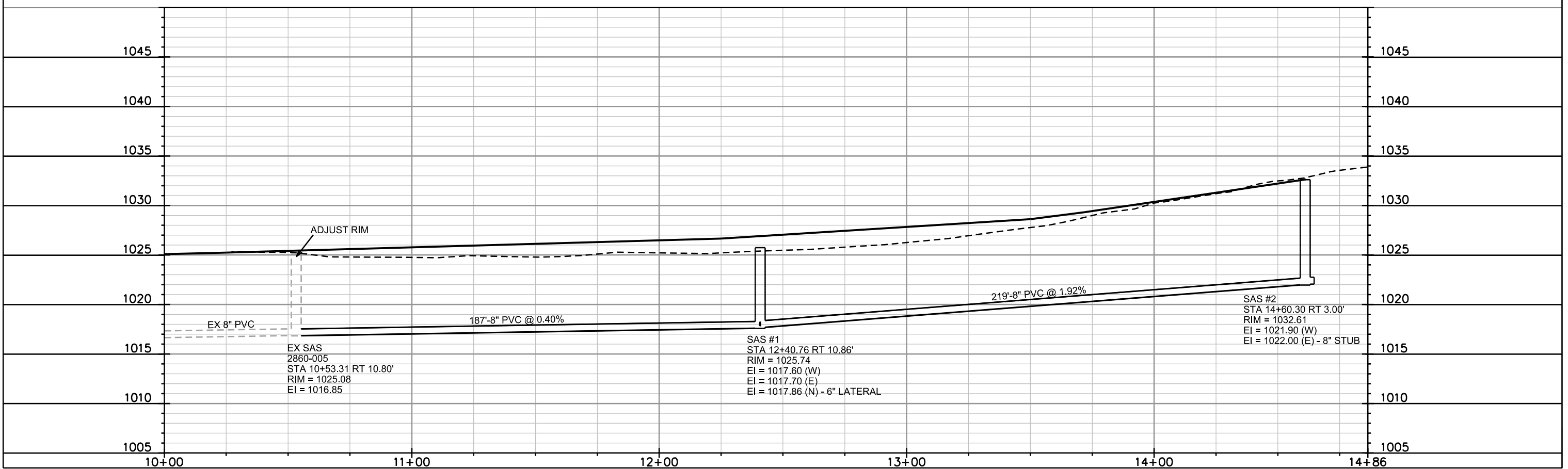
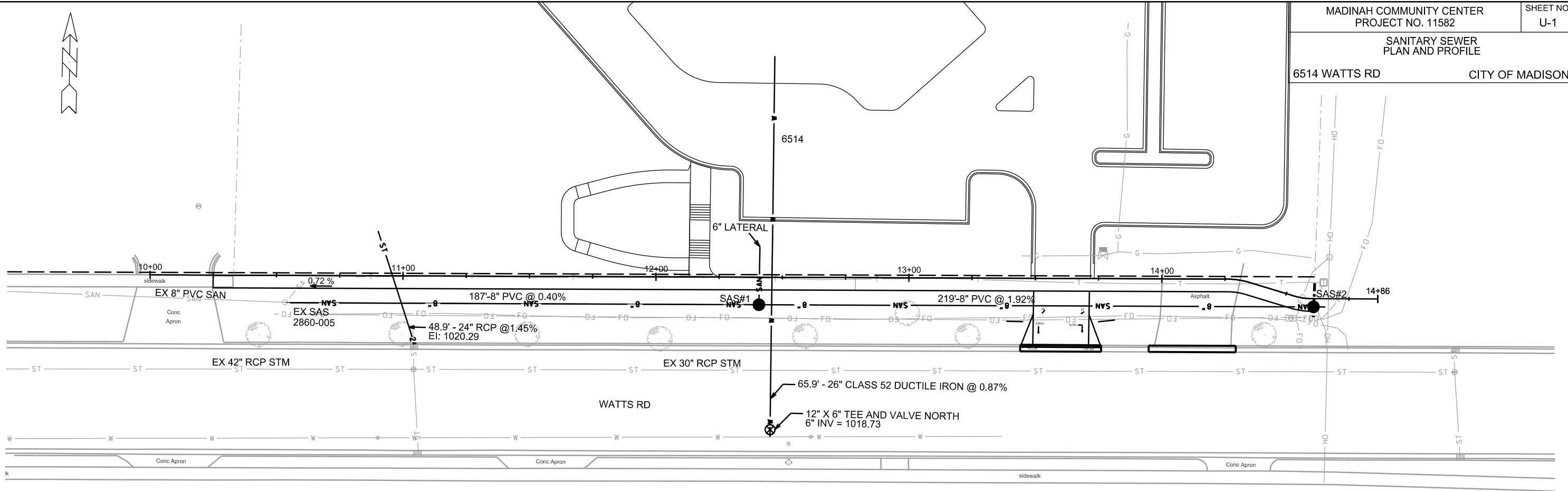
PLOT NAME: \_\_\_\_\_

REV. DATE: \_\_\_\_\_

ORIGINATOR: CITY OF MADISON, STREETS DIVISION

SANITARY SEWER  
PLAN AND PROFILE

6514 WATTS RD CITY OF MADISON



PLOT SCALE: \_\_\_\_\_

PLOT NAME: \_\_\_\_\_

REV. DATE: \_\_\_\_\_

ORIGINATOR: CITY OF MADISON, STREETS DIVISION