

Madison, Wisconsin

CITY OF MADISON

CITY ENGINEERING DIVISION

DEPARTMENT OF PUBLIC WORKS

PLAN OF PROPOSED IMPROVEMENT

PUBLIC IMPROVEMENT PROJECT APPROVED

MARCH 7, 2017

BY THE COMMON COUNCIL OF MADISON, WISCONSIN

PUBLIC IMPROVEMENT DESIGN APPROVED BY:

[Signature] 11/2/17
City Engineer Date

SANITARY SEWER DESIGNED BY:

[Signature] 10/31/17
WISCONSIN PROFESSIONAL ENGINEER
MARK D. MODER
E-33979
MADISON WI

STREET PLAN DESIGNED BY:

[Signature]
WISCONSIN PROFESSIONAL ENGINEER
JOHN P. SAPP
44054
Janesville, WI
10-31-17

STORM & WATER LATERALS DESIGNED BY:

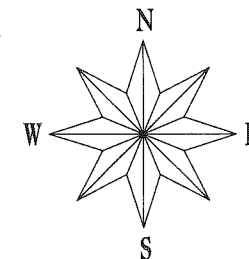
BY DEVELOPER

INDEX OF SHEETS

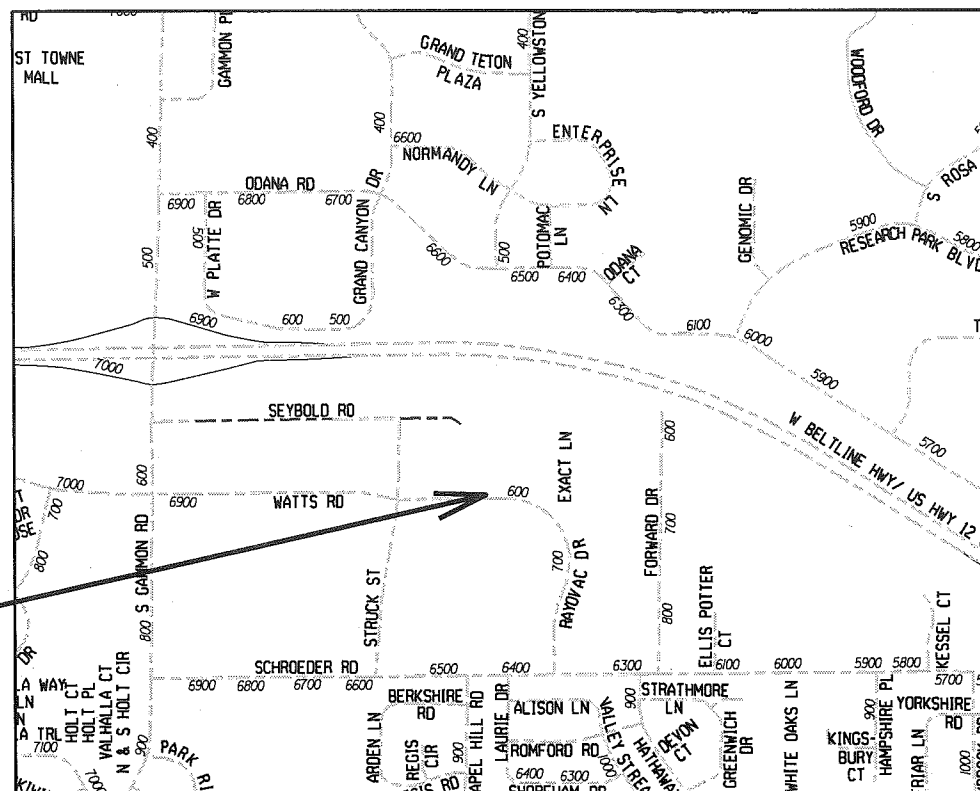
SHEET NO.	TITLE
1	
D-1	DETAIL
P-1	STREET PLAN
U-1	UTILITY PLAN

6514 WATTS ROAD MADINAH COMMUNITY CENTER

CITY PROJECT NO. 11582
CITY CONTRACT NO. 7926



CONVENTIONAL SIGNS	
FIELD VERIFY ALL UTILITY LOCATIONS	
GAS	— G —
STORM SEWER	— ST —
SANITARY SEWER	— SAN —
WATER	— W —
OVERHEAD ELECTRIC	— OH —
POWER POLE	⊕
ADA COMPLIANT RAMP W/ DETECTABLE WARNING FIELD	
COMBUSTIBLE FLUIDS	



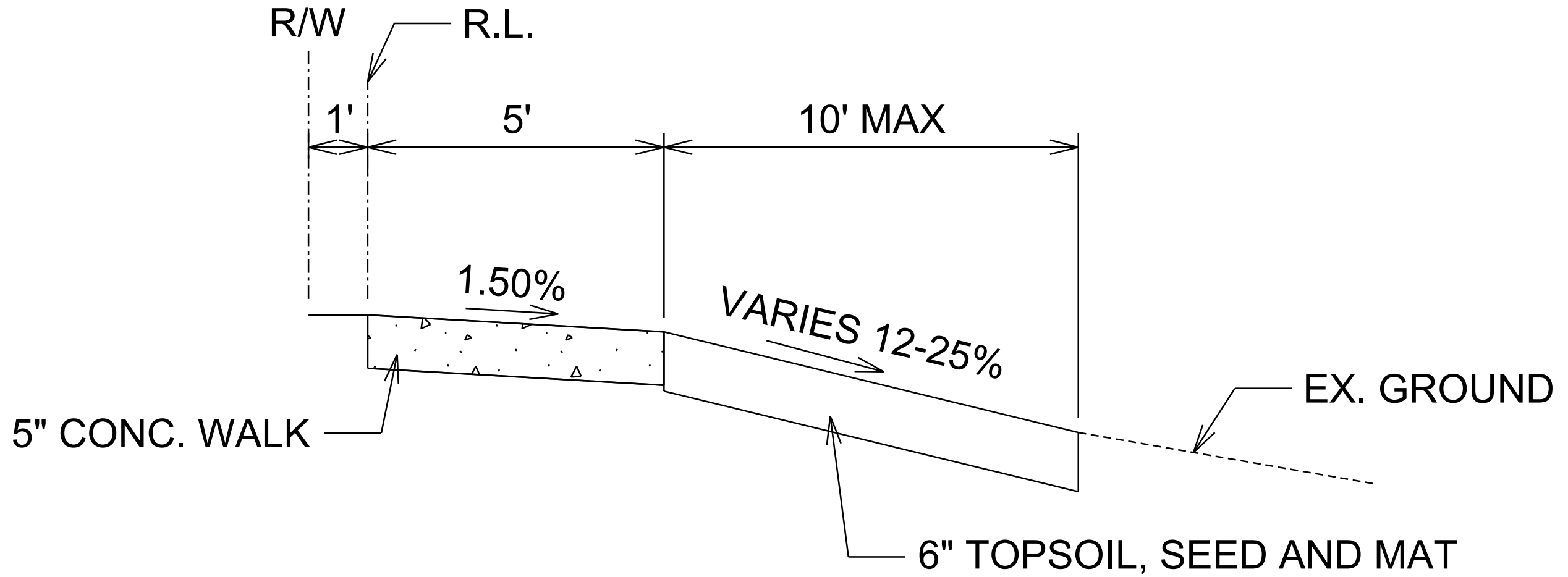
CONSTRUCTION PROJECT LOCATION

PLOT SCALE:

PLOT NAME:

REV. DATE:

ORIGINATOR: CITY OF MADISON, STREETS DIVISION



SIDEWALK TYPICAL SECTION

PLOT SCALE: _____

PLOT NAME: _____

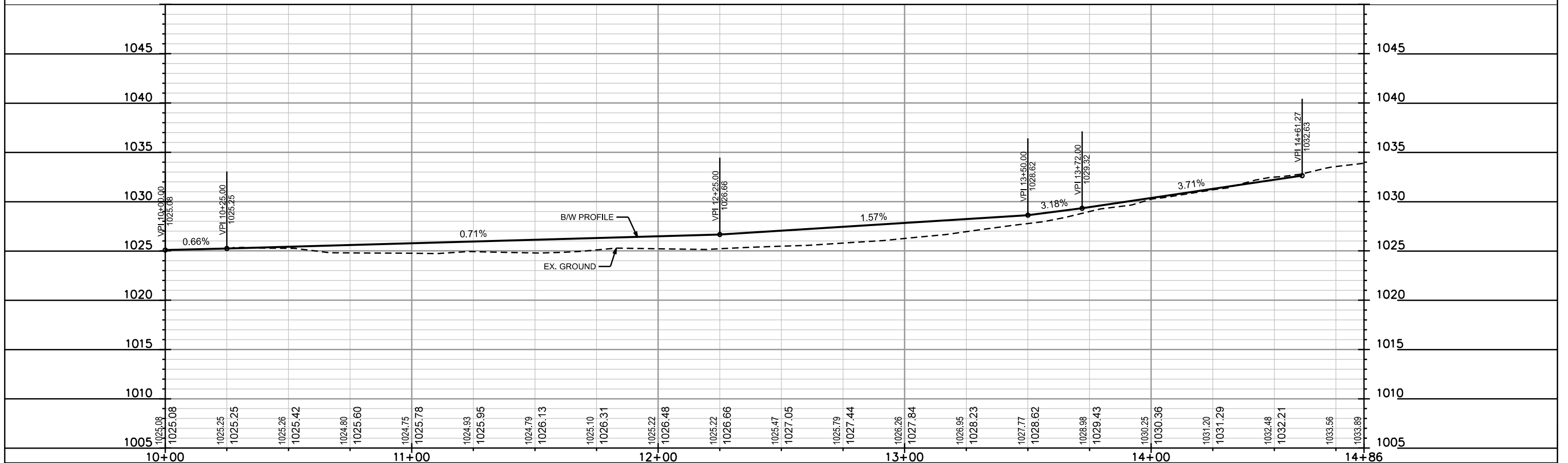
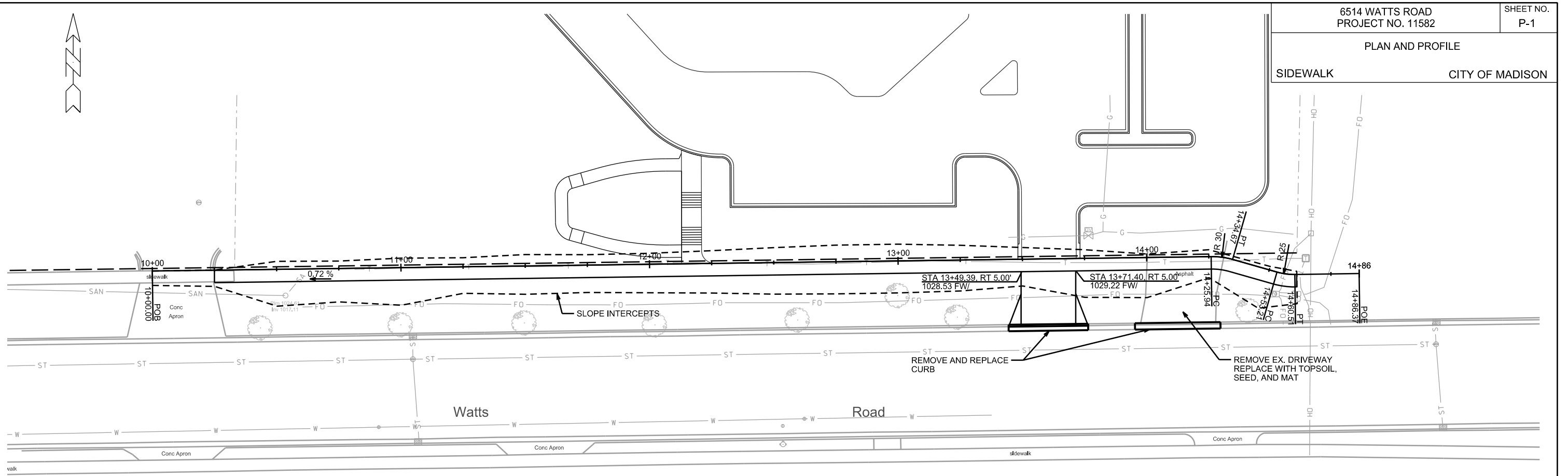
REV. DATE: _____

ORIGINATOR: CITY OF MADISON, STREETS DIVISION

PLAN AND PROFILE

SIDEWALK

CITY OF MADISON



PLOT SCALE: _____

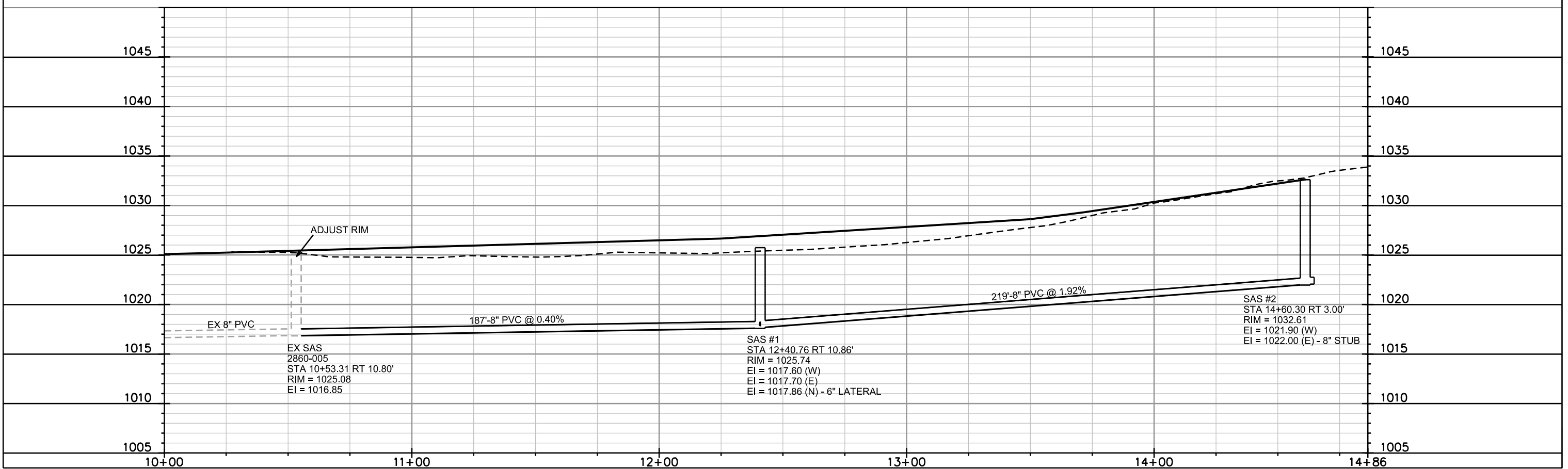
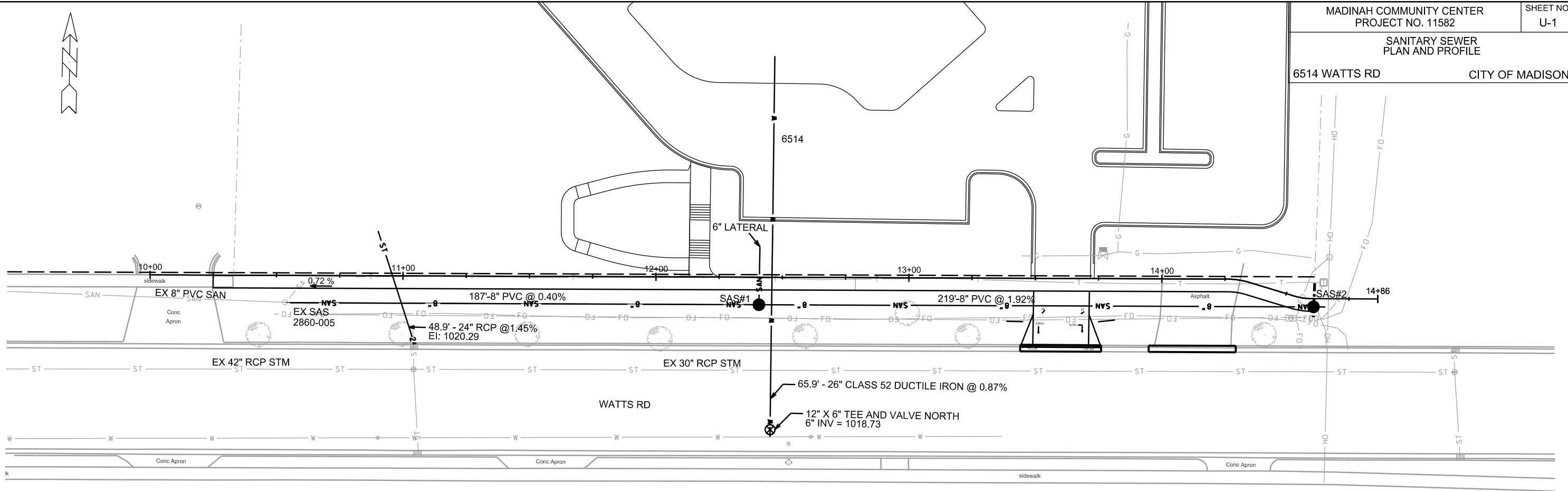
PLOT NAME: _____

REV. DATE: _____

ORIGINATOR: CITY OF MADISON, STREETS DIVISION

SANITARY SEWER
PLAN AND PROFILE

6514 WATTS RD CITY OF MADISON



PLOT SCALE: _____

PLOT NAME: _____

REV. DATE: _____

ORIGINATOR: CITY OF MADISON, STREETS DIVISION