

Madison, Wisconsin

INDEX OF SHEETS

SHEET NO.	TITLE
1	
U1 - U2	UTILITY PLANS

CITY OF MADISON

CITY ENGINEERING DIVISION

DEPARTMENT OF PUBLIC WORKS

PLAN OF PROPOSED IMPROVEMENT

3601 CROSS HILL DRIVE

UTILITIES ONLY: SANITARY & WATER

CITY PROJECT NO. 11716

CITY CONTRACT NO. 8014

PUBLIC IMPROVEMENT PROJECT APPROVED

SEPTEMBER 5, 2017

BY THE COMMON COUNCIL OF MADISON, WISCONSIN

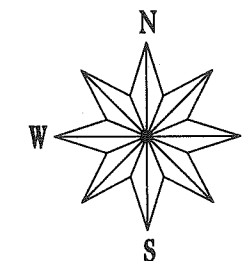
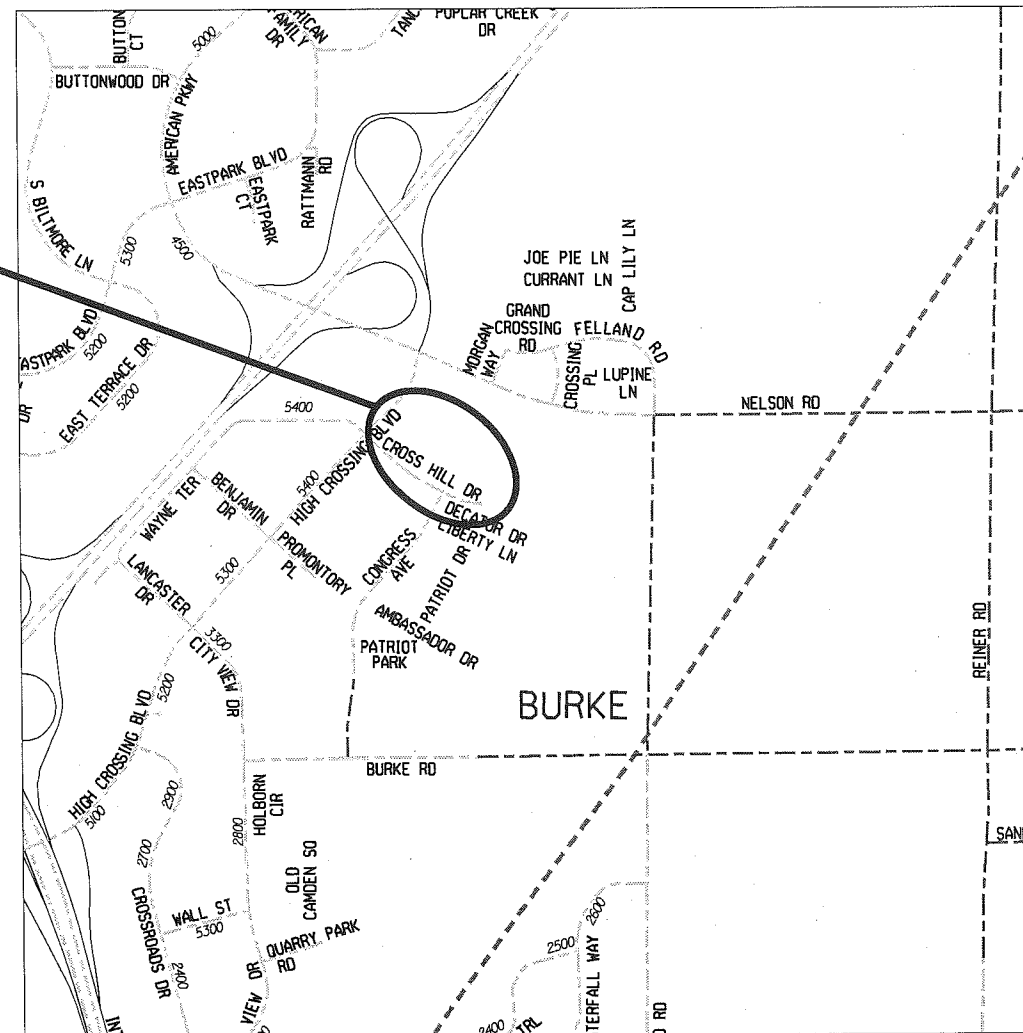
PUBLIC IMPROVEMENT DESIGN APPROVED BY:

[Signature] 11/13/17
 City Engineer Date

WATER AND SANITARY SEWER DESIGNED BY:

BY DEVELOPER

PROJECT LOCATION



PLOT SCALE:

PLOT NAME:

REV. DATE:

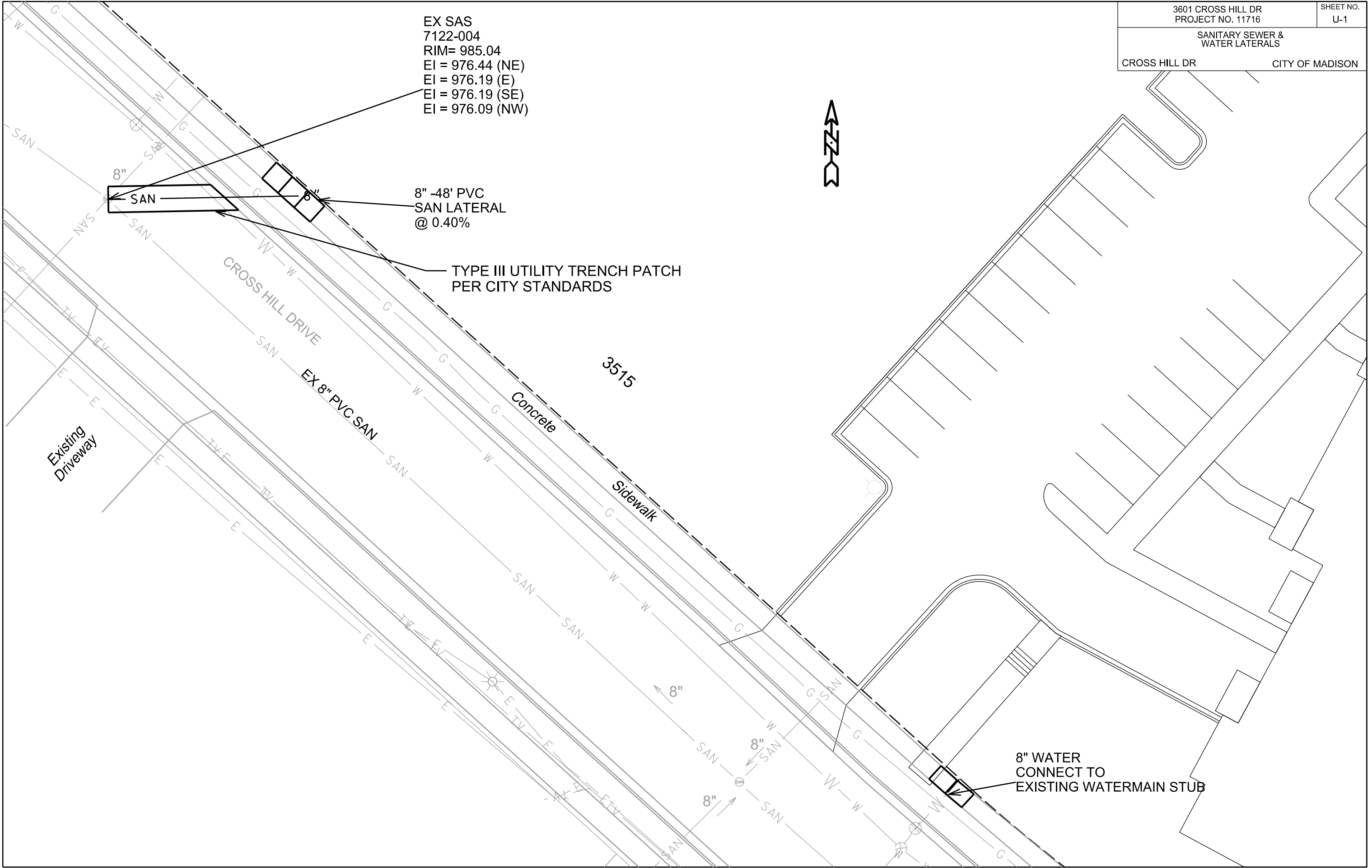
ORIGINATOR: CITY OF MADISON, STREETS DIVISION

EX SAS
7122-004
RIM= 985.04
EI = 976.44 (NE)
EI = 976.19 (E)
EI = 976.19 (SE)
EI = 976.09 (NW)

8" -48' PVC
SAN LATERAL
@ 0.40%

TYPE III UTILITY TRENCH PATCH
PER CITY STANDARDS

8" WATER
CONNECT TO
EXISTING WATERMAIN STUB

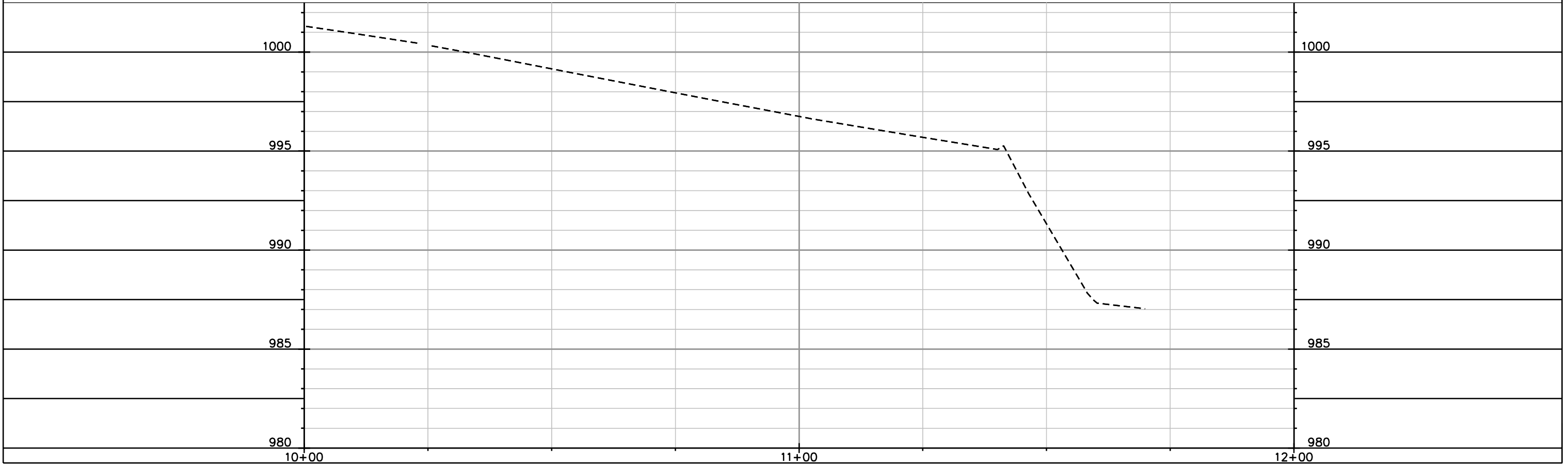
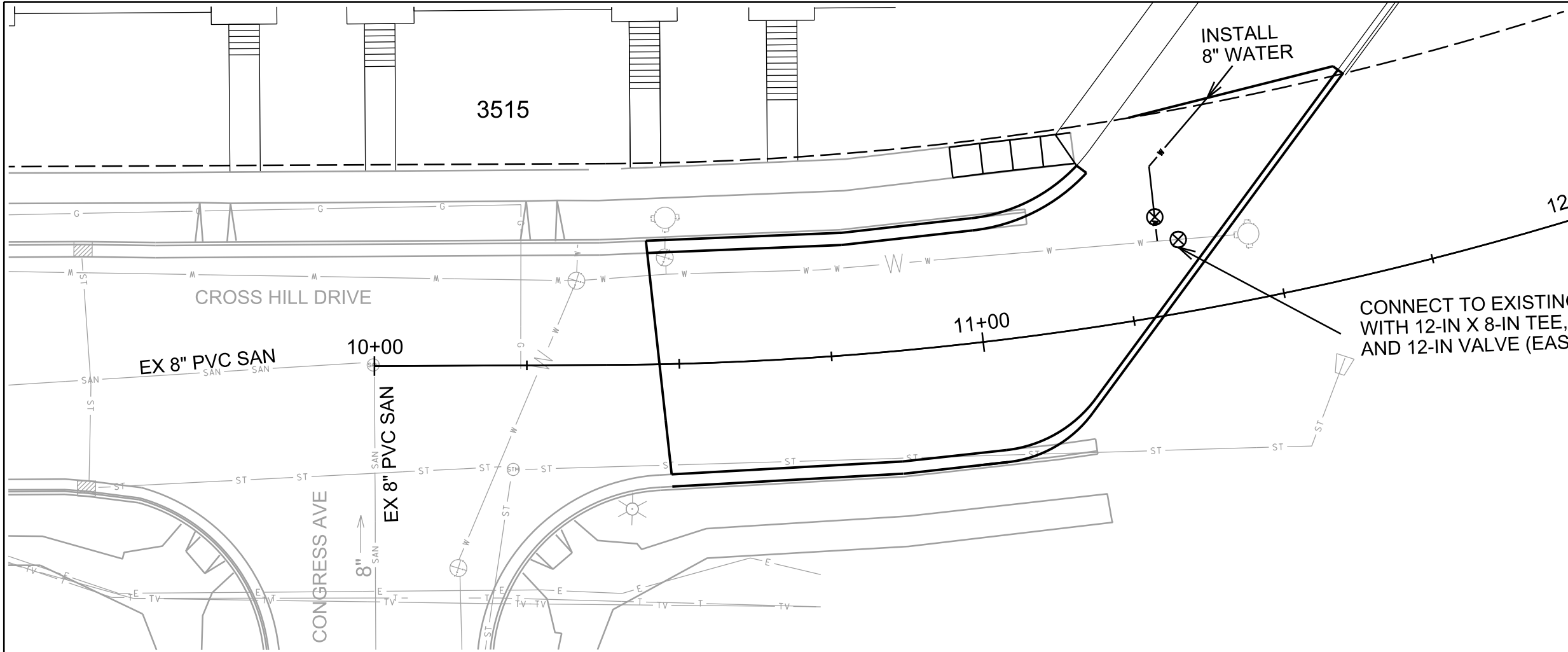


PLOT SCALE: _____

PLOT NAME: _____

REV. DATE: _____

ORIGINATOR: CITY OF MADISON, STREETS DIVISION



PLOT SCALE: _____

PLOT NAME: _____

REV. DATE: _____

ORIGINATOR: CITY OF MADISON, STREETS DIVISION