



Madison, Wisconsin

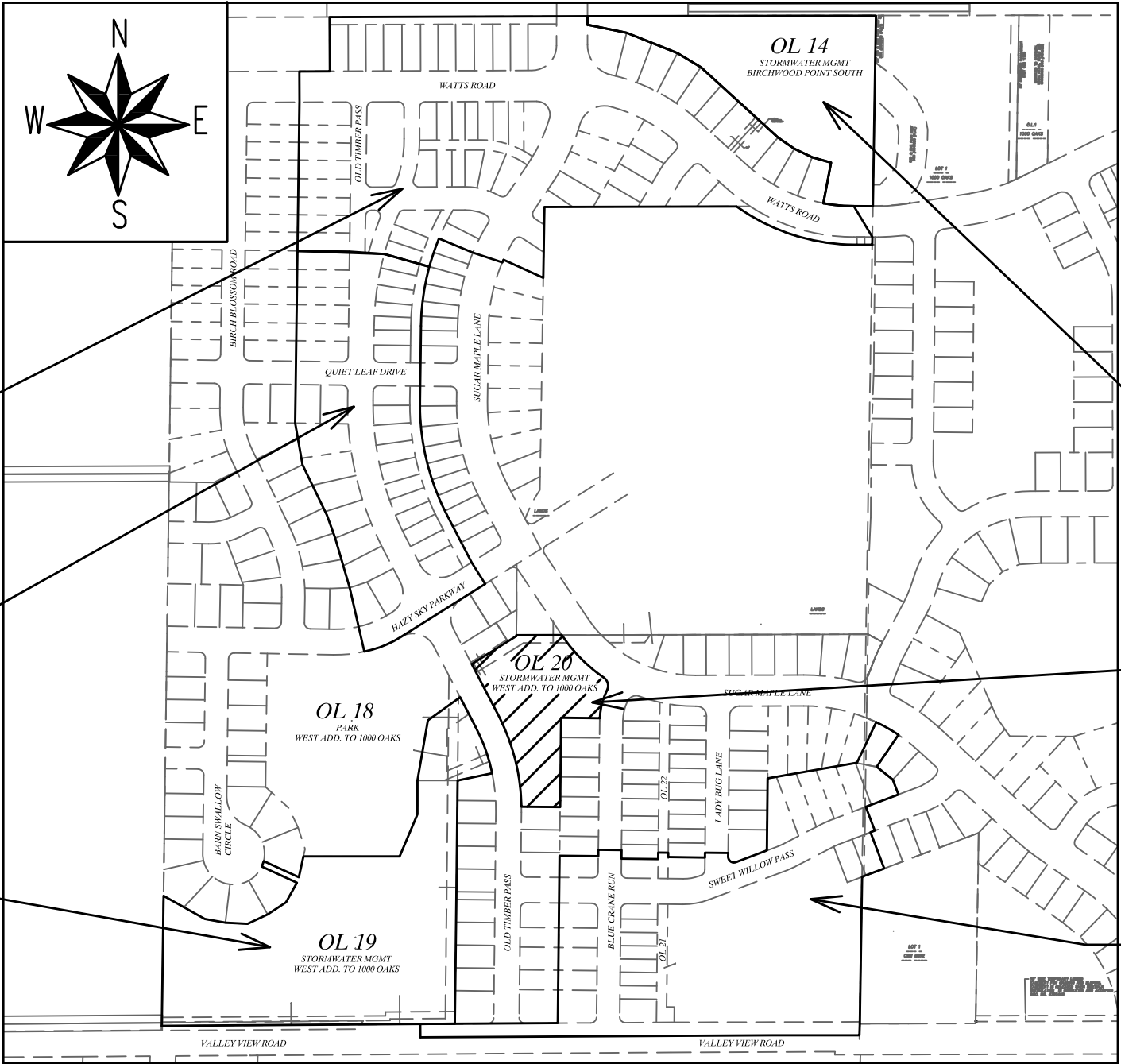
INDEX OF SHEETS

- FOR BIRCHWOOD POINT SOUTH: PHASE 1 (PROJ NO. 11932)
- SHEET NO. 1 PROPOSED NORTH BASIN LAYOUT
- SHEET NO. 2 NORTH DETENTION/INFILTRATION BASIN DETAIL
- FOR BIRCHWOOD POINT SOUTH: PHASE 2 (PROJ NO. 11997)
- SHEET NO. 3 SOUTH STORMWATER SYSTEM LAYOUT
- SHEET NO. 4 SOUTH DETENTION/INFILTRATION BASIN DETAIL
- SHEET NO. 5 REGIONAL BYPASS CHANNEL
- SHEET NO. 6 TEMPORARY INFILTRATION BYPASS EXHIBIT

- FOR WESTERN ADDITION TO 1000 OAKS: PHASE 1 (PROJ NO. 12325)
- * SHEET NO. 7 OL 20 DETENTION BASIN LAYOUT
- * SHEET NO. 8 OL 20 DETENTION BASIN DETAIL
- * = REVISED SHEETS ADDED AS PART OF CURRENT PLAN REVISION

CITY OF MADISON
CITY ENGINEERING DIVISION
DEPARTMENT OF PUBLIC WORKS
PLAN OF PROPOSED IMPROVEMENT
BIRCHWOOD POINT SOUTH
STORMWATER MANAGEMENT

CITY PROJECT NO. 11933 CITY CONTRACT NO. 8196 MUNIS NO. 11933



PUBLIC IMPROVEMENT PROJECT
APPROVED

OCTOBER 15, 2019

BY THE COMMON COUNCIL
OF MADISON, WISCONSIN

PUBLIC IMPROVEMENT DESIGN
APPROVED BY:

N- Greg Fries 8/10/20
City Engineer Date

STORMWATER PONDS
DESIGNED BY:

SEE
INDIVIDUAL
SHEETS

BIRCHWOOD POINT
SOUTH: PHASE 1 (SEE
PROJECT NO. 11932)

PREVIOUS
STORMWATER
MANAGEMENT

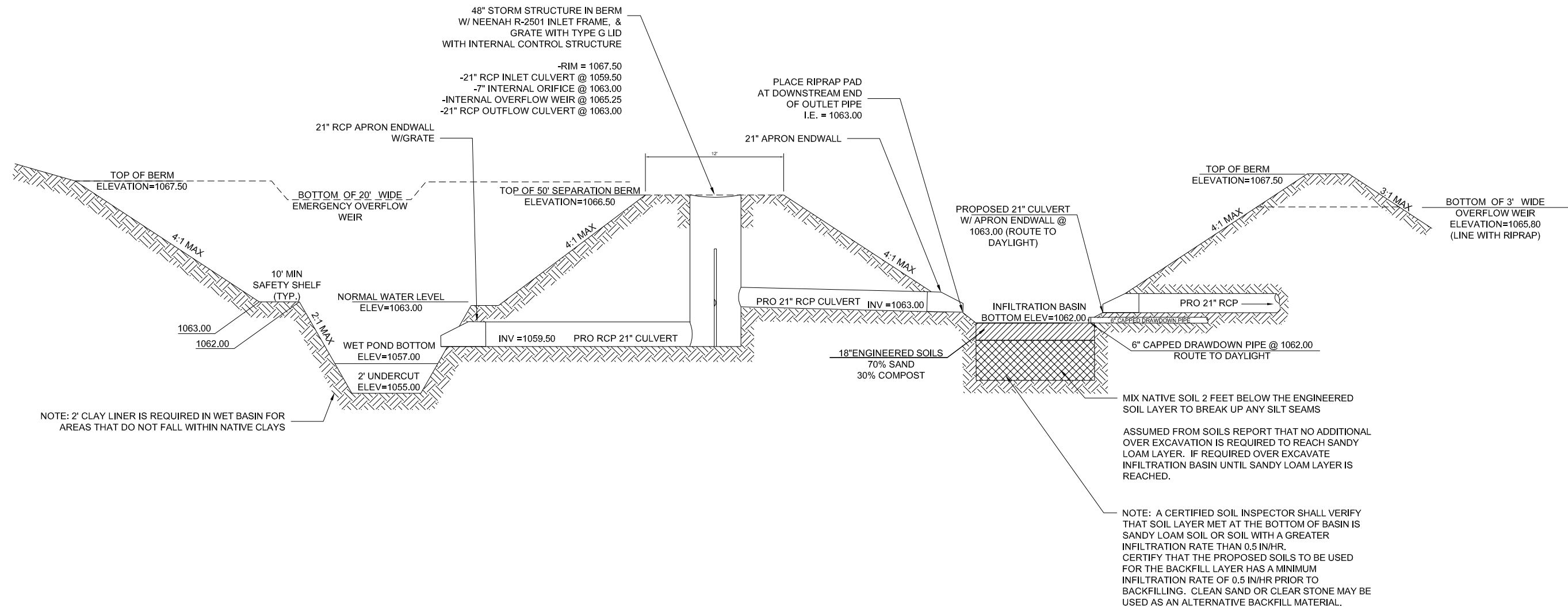
BIRCHWOOD POINT
SOUTH: PHASE 2 (SEE
PROJECT NO. 11997)

STORMWATER
MANAGEMENT
(THIS PROJECT)

PREVIOUS
STORMWATER
MANAGEMENT

WESTERN ADDITION TO
1000 OAKS: PHASE 1
(SEE PROJECT NO. 12325)

PLOT SCALE: 1" = 1' PLOT NAME: --- REV. DATE: 8/4/2020 1:17 PM ORIGINATOR: CITY_OF_MADISON



PROFILE VIEW

PROPOSED NORTH WET DETENTION/INFILTRATION BASIN DETAIL

NOT TO SCALE



NORTH DETENTION/INFILTRATION BASIN DETAIL

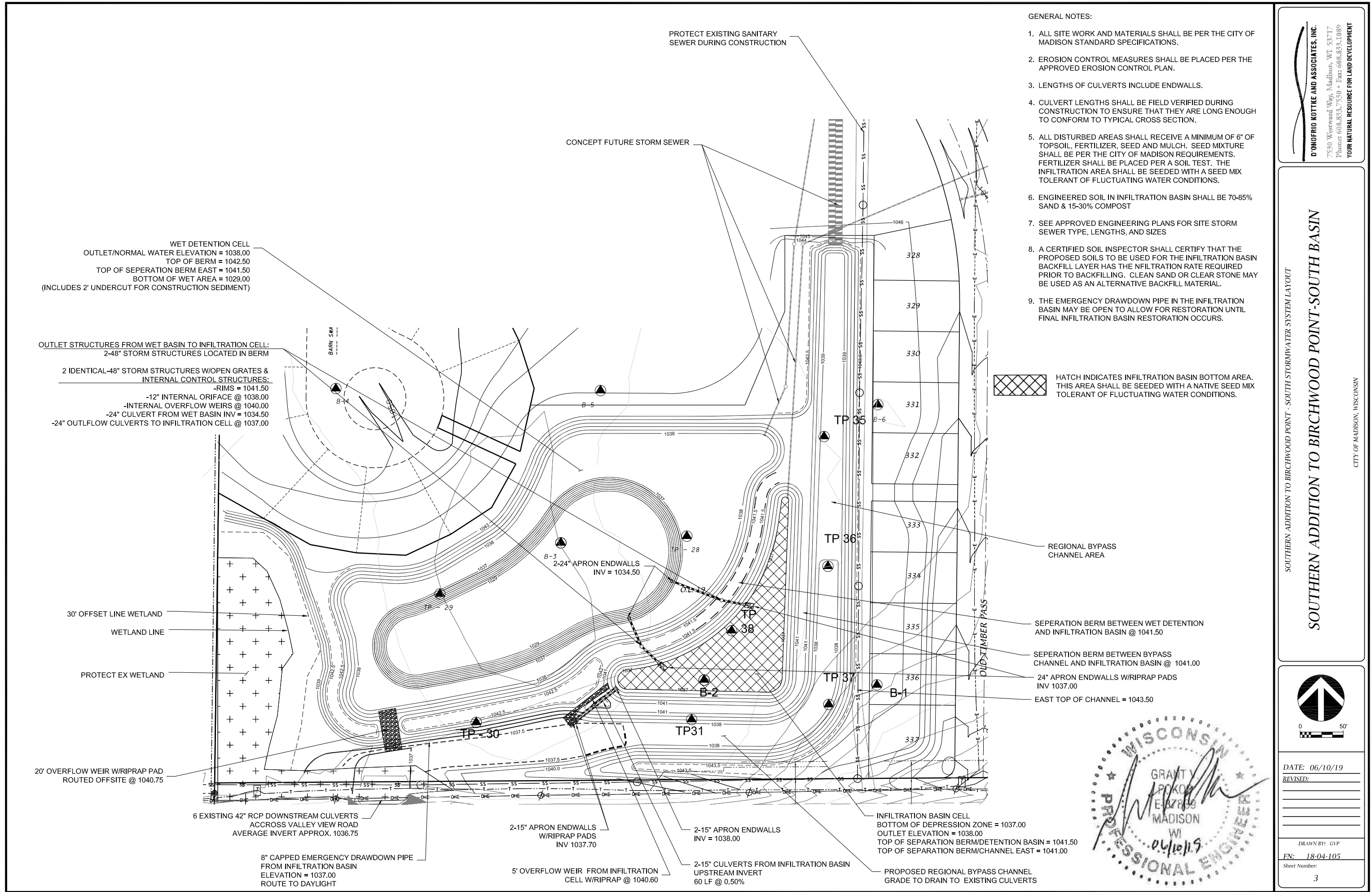
SOUTH ADDITION TO BIRCHWOOD POINT

D'ONOFRIO KOTTKE AND ASSOCIATES, INC.
7530 Westward Way, Madison, WI 53717
Phone: 608.833.7530 • Fax: 608.833.1089
YOUR NATURAL RESOURCE FOR LAND DEVELOPMENT

CITY OF MADISON, WISCONSIN

DATE: 09/17/18
REVISED:

DRAWN BY: GVP
FN: 17-04-110
Sheet Number:
2 of 2



- GENERAL NOTES:
1. ALL SITE WORK AND MATERIALS SHALL BE PER THE CITY OF MADISON STANDARD SPECIFICATIONS.
 2. EROSION CONTROL MEASURES SHALL BE PLACED PER THE APPROVED EROSION CONTROL PLAN.
 3. LENGTHS OF CULVERTS INCLUDE ENDWALLS.
 4. CULVERT LENGTHS SHALL BE FIELD VERIFIED DURING CONSTRUCTION TO ENSURE THAT THEY ARE LONG ENOUGH TO CONFORM TO TYPICAL CROSS SECTION.
 5. ALL DISTURBED AREAS SHALL RECEIVE A MINIMUM OF 6" OF TOPSOIL, FERTILIZER, SEED AND MULCH. SEED MIXTURE SHALL BE PER THE CITY OF MADISON REQUIREMENTS. FERTILIZER SHALL BE PLACED PER A SOIL TEST. THE INFILTRATION AREA SHALL BE SEED WITH A SEED MIX TOLERANT OF FLUCTUATING WATER CONDITIONS.
 6. ENGINEERED SOIL IN INFILTRATION BASIN SHALL BE 70-85% SAND & 15-30% COMPOST
 7. SEE APPROVED ENGINEERING PLANS FOR SITE STORM SEWER TYPE, LENGTHS, AND SIZES
 8. A CERTIFIED SOIL INSPECTOR SHALL CERTIFY THAT THE PROPOSED SOILS TO BE USED FOR THE INFILTRATION BASIN BACKFILL LAYER HAS THE INFILTRATION RATE REQUIRED PRIOR TO BACKFILLING. CLEAN SAND OR CLEAR STONE MAY BE USED AS AN ALTERNATIVE BACKFILL MATERIAL.
 9. THE EMERGENCY DRAWDOWN PIPE IN THE INFILTRATION BASIN MAY BE OPEN TO ALLOW FOR RESTORATION UNTIL FINAL INFILTRATION BASIN RESTORATION OCCURS.

HATCH INDICATES INFILTRATION BASIN BOTTOM AREA. THIS AREA SHALL BE SEED WITH A NATIVE SEED MIX TOLERANT OF FLUCTUATING WATER CONDITIONS.

REGIONAL BYPASS CHANNEL AREA

SEPERATION BERM BETWEEN WET DETENTION AND INFILTRATION BASIN @ 1041.50

SEPERATION BERM BETWEEN BYPASS CHANNEL AND INFILTRATION BASIN @ 1041.00

24" APRON ENDWALLS W/RIPRAP PADS INV 1037.00

EAST TOP OF CHANNEL = 1043.50

INFILTRATION BASIN CELL
BOTTOM OF DEPRESSION ZONE = 1037.00
OUTLET ELEVATION = 1038.00
TOP OF SEPERATION BERM/DETENTION BASIN = 1041.50
TOP OF SEPERATION BERM/CHANNEL EAST = 1041.00

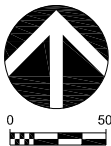
PROPOSED REGIONAL BYPASS CHANNEL
GRADE TO DRAIN TO EXISTING CULVERTS



SOUTHERN ADDITION TO BIRCHWOOD POINT - SOUTH STORMWATER SYSTEM LAYOUT

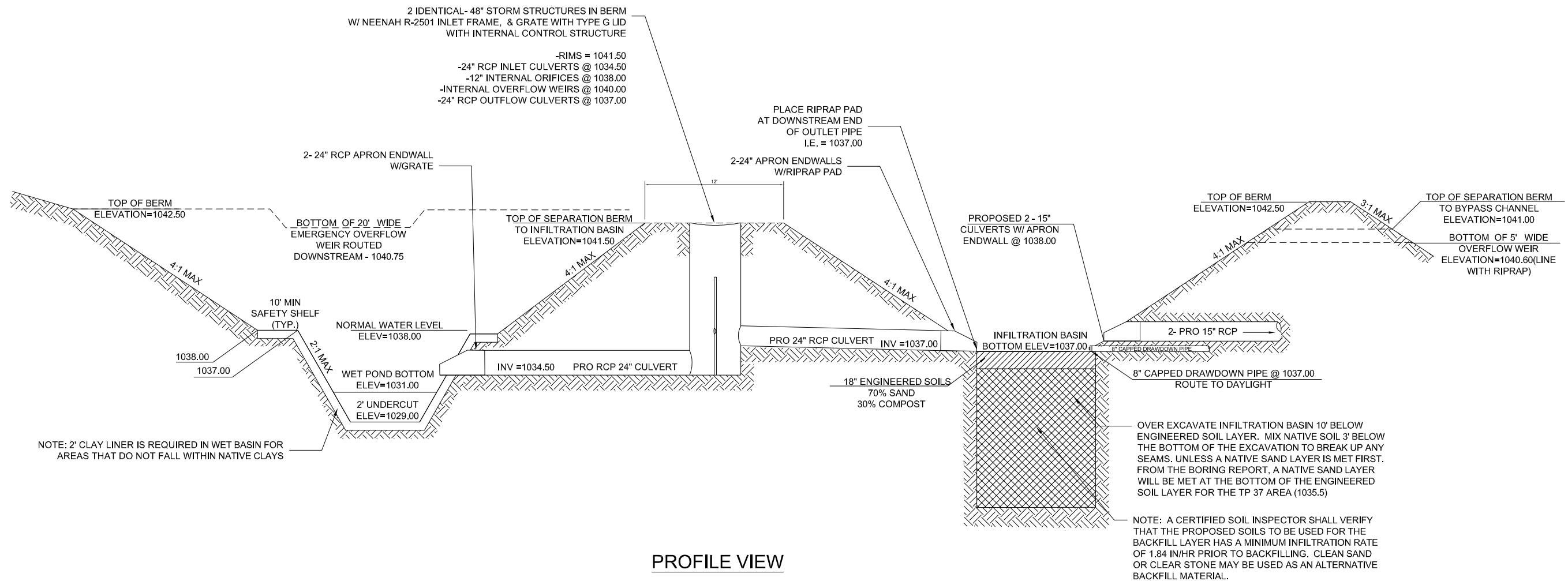
SOUTHERN ADDITION TO BIRCHWOOD POINT-SOUTH BASIN

CITY OF MADISON, WISCONSIN



DATE: 06/10/19
REVISED:

DRAWN BY: GVP
FN: 18-04-105
Sheet Number:
3



PROFILE VIEW

**SOUTHERN ADDITION TO BIRCHWOOD POINT - SOUTH WET
DETENTION/INFILTRATION BASIN DETAIL**

NOT TO SCALE



SOUTHERN ADDITION TO BIRCHWOOD POINT - SOUTH DETENTION/INFILTRATION BASIN DETAIL

SOUTHERN ADDITION TO BIRCHWOOD POINT-SOUTH BASIN

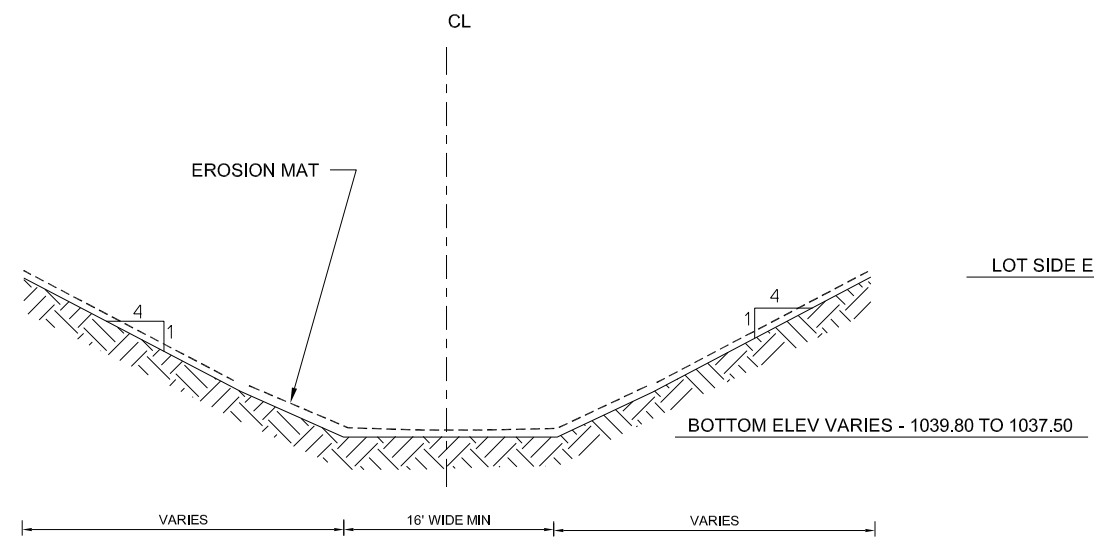
D'ONOFRIO KOTTKE AND ASSOCIATES, INC.
7530 Westward Way, Madison, WI 53717
Phone: 608.833.7530 • Fax: 608.833.1089
YOUR NATURAL RESOURCE FOR LAND DEVELOPMENT

CITY OF MADISON, WISCONSIN

DATE: 06/10/19
REVISED:

DRAWN BY: GVP
FN: 18-04-105
Sheet Number:
4

BASIN SIDE ELEVATION = 1041.00



REGIONAL BYPASS CHANNEL
NOT TO SCALE



SOUTHERN ADDITION TO BIRCHWOOD POINT - REGIONAL BYPASS CHANNEL

SOUTHERN ADDITION TO BIRCHWOOD POINT-SOUTH BASIN

D'ONOFRIO KOTTKE AND ASSOCIATES, INC.
7530 Westward Way, Madison, WI 53717
Phone: 608.833.7530 • Fax: 608.833.1089
YOUR NATURAL RESOURCE FOR LAND DEVELOPMENT

CITY OF MADISON, WISCONSIN

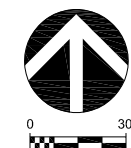
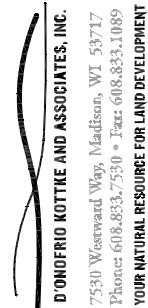
DATE: 06/10/19
REVISED:

DRAWN BY: GVP
FN: 18-04-105
Sheet Number:
5



SOUTHERN ADDITION TO BIRCHWOOD POINT-SOUTH BASIN

CITY OF MADISON, WISCONSIN



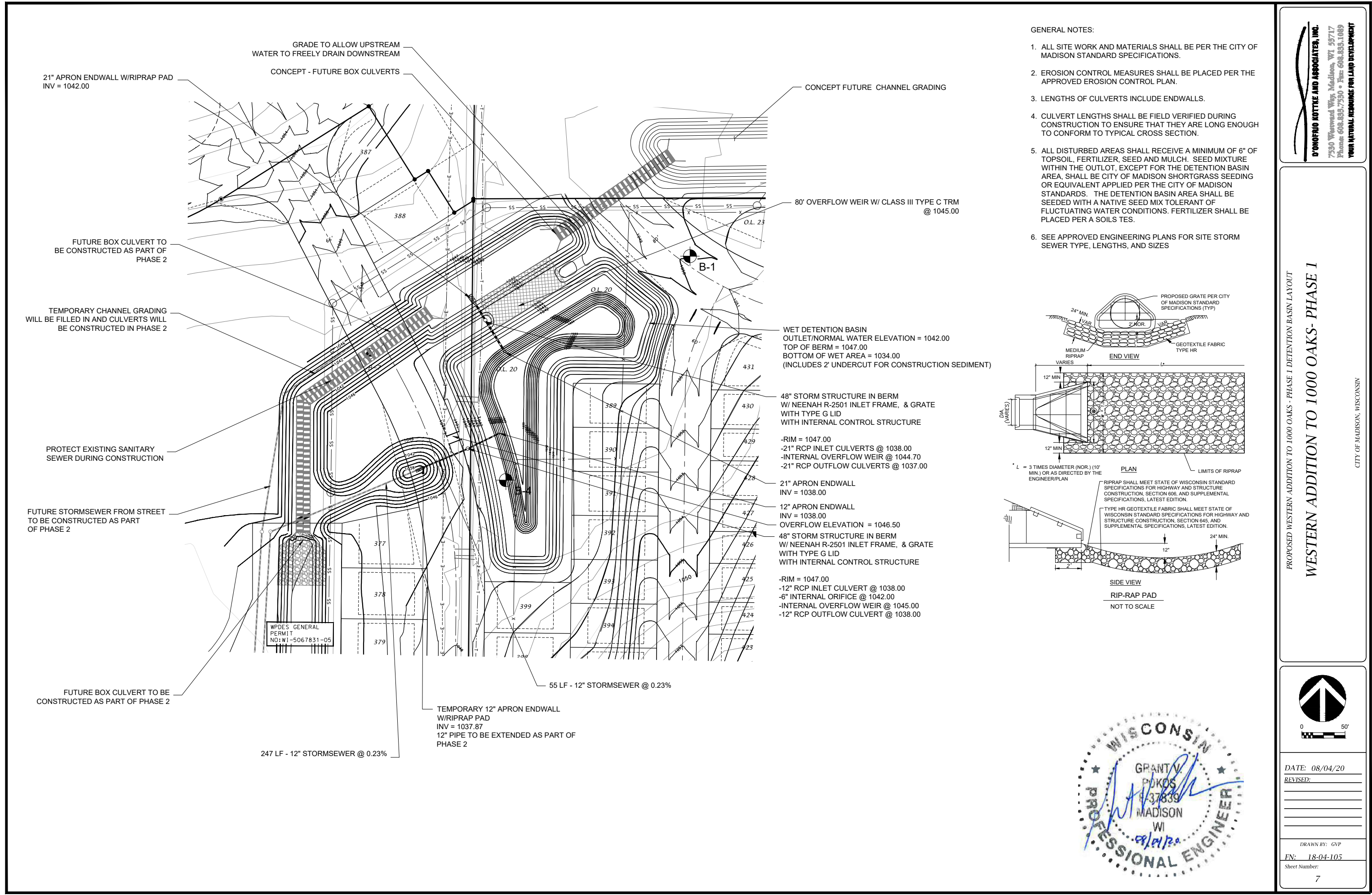
DATE: 06/10/19
REVISÉ:

DRAWN BY: GVP

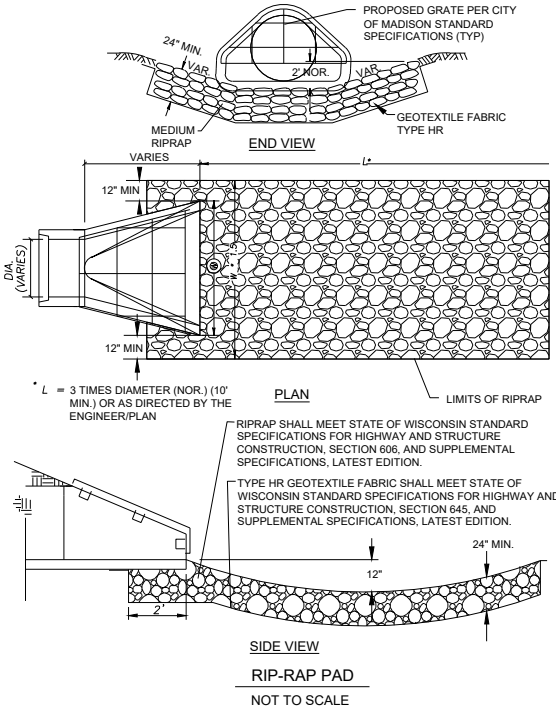
FN: 18-04-105

Sheet Number

e



- GENERAL NOTES:
1. ALL SITE WORK AND MATERIALS SHALL BE PER THE CITY OF MADISON STANDARD SPECIFICATIONS.
 2. EROSION CONTROL MEASURES SHALL BE PLACED PER THE APPROVED EROSION CONTROL PLAN.
 3. LENGTHS OF CULVERTS INCLUDE ENDWALLS.
 4. CULVERT LENGTHS SHALL BE FIELD VERIFIED DURING CONSTRUCTION TO ENSURE THAT THEY ARE LONG ENOUGH TO CONFORM TO TYPICAL CROSS SECTION.
 5. ALL DISTURBED AREAS SHALL RECEIVE A MINIMUM OF 6" OF TOPSOIL, FERTILIZER, SEED AND MULCH. SEED MIXTURE WITHIN THE OUTLOT, EXCEPT FOR THE DETENTION BASIN AREA, SHALL BE CITY OF MADISON SHORTGRASS SEEDING OR EQUIVALENT APPLIED PER THE CITY OF MADISON STANDARDS. THE DETENTION BASIN AREA SHALL BE SEEDED WITH A NATIVE SEED MIX TOLERANT OF FLUCTUATING WATER CONDITIONS. FERTILIZER SHALL BE PLACED PER A SOILS TES.
 6. SEE APPROVED ENGINEERING PLANS FOR SITE STORM SEWER TYPE, LENGTHS, AND SIZES

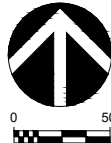


PROPOSED WESTERN ADDITION TO 1000 OAKS - PHASE 1 DETENTION BASIN LAYOUT

WESTERN ADDITION TO 1000 OAKS- PHASE 1

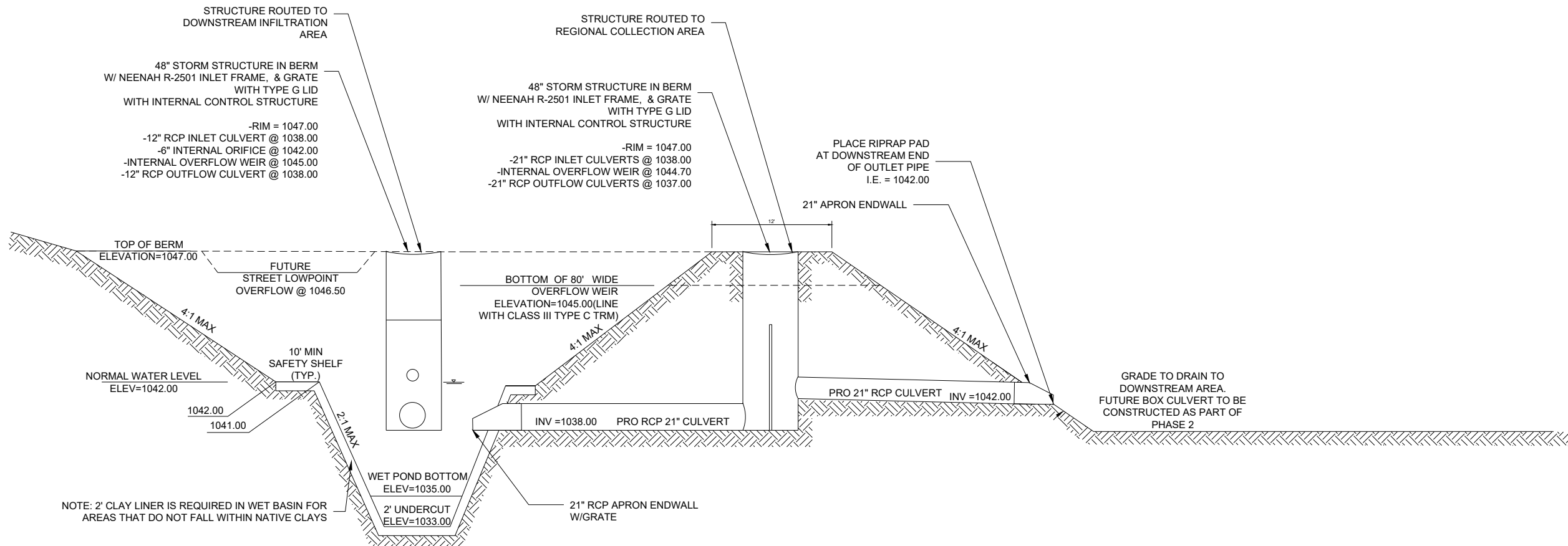
D'ONOFRIO KOTKE AND ASSOCIATES, INC.
7350 Westwood Way, Madison, WI 53717
Phone: 608.835.7350 • Fax: 608.835.1089
YOUR NATURAL RESOURCE FOR LAND DEVELOPMENT

CITY OF MADISON, WISCONSIN



DATE: 08/04/20
REVISED:

DRAWN BY: GVP
FN: 18-04-105
Sheet Number:
7



PROFILE VIEW

PROPOSED WESTERN ADDITION TO 1000 OAKS WET DETENTION BASIN
DETAIL

NOT TO SCALE

