



Madison, Wisconsin

INDEX OF SHEETS

|           |       |                         |
|-----------|-------|-------------------------|
| SHEET NO. | 1     | TITLE                   |
| SHEET NO. | D1    | GENERAL NOTES           |
| SHEET NO. | D2    | TYPICAL SECTIONS        |
| SHEET NO. | P1-P3 | SIDEWALK PLAN & PROFILE |
| SHEET NO. | M1-M2 | PAVEMENT MARKING        |
| SHEET NO. | E1-E2 | ELECTRICAL PLAN         |
| SHEET NO. | L1-L2 | LANDSCAPE PLAN          |

CITY MAINTENANCE  
PLAN NOT REQUIRED

PROJECT  
LOCATION

CONVENTIONAL SIGNS  
FIELD VERIFY ALL UTILITY LOCATIONS

|   |         |
|---|---------|
| GAS   | — G —   |
| STORM SEWER                                       | — ST —  |
| SANITARY SEWER                                    | — SAN — |
| WATER   | — W —   |
| BURIED ELECTRIC                                   | — E —   |
| OVERHEAD ELECTRIC                                 | — OH —  |
| POWER POLE  |         |
| ADA COMPLIANT RAMP W/<br>DETECTABLE WARNING FIELD |         |
| COMBUSTIBLE FLUIDS                                |         |

NOTES:

ALL GUTTERS SHALL DRAIN WITH A MINIMUM GRADE  
OF 0.50% TOWARD STORM SEWER INLETS.

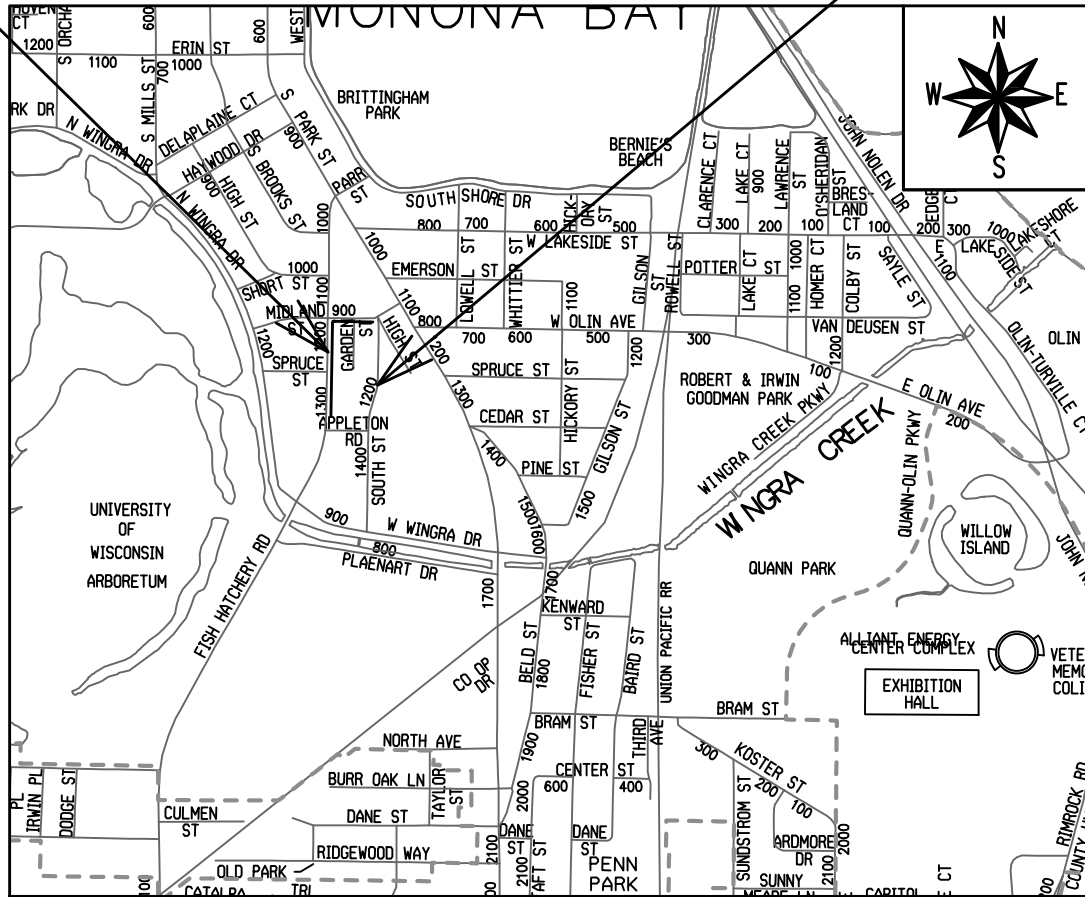
SIDEWALK RAMPS SHALL HAVE A MAXIMUM SLOPE OF 1"  
PER 12". SIDEWALK AND CURB RAMPS SHALL BE  
CONSTRUCTED WITH A SIDE SLOPE OF 2.00%. SIDEWALK  
SHALL HAVE A MINIMUM LONGITUDINAL SLOPE OF  
0.50% AND A MAXIMUM LONGITUDINAL SLOPE OF 5.00%  
EXCEPT WHERE STREET GRADES EXCEED 5.00%.

CITY OF MADISON  
CITY ENGINEERING DIVISION  
DEPARTMENT OF PUBLIC WORKS  
PLAN OF PROPOSED IMPROVEMENT

SSM FISH HATCHERY ROAD CLINIC & CSM  
TERRACE RESTORATION ONLY

CITY PROJECT NO. 12948  
CONTRACT NO. 8894

CEDAR STREET, SOUTH STREET, & HIGH  
STREET PLANS (SEE PROJECT NO. 11866  
& 12956, CONTRACT NO. 8504 & 8559)



PAVEMENT MARKING  
DESIGNED BY:



Oct 27, 2020

LIGHTING  
DESIGNED BY:



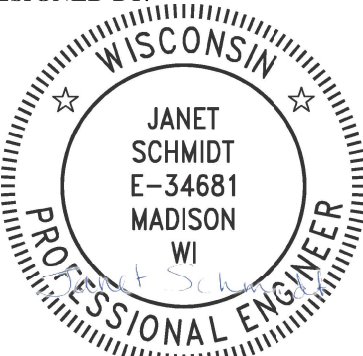
Oct 27, 2020

STREET  
DESIGNED BY:



Oct 27, 2020

STORM SEWER  
DESIGNED BY:



Oct 27, 2020

PUBLIC IMPROVEMENT DESIGN  
APPROVED BY:

*Greg Fries*

Oct 27, 2020

City Engineer

Date

PUBLIC IMPROVEMENT PROJECT  
APPROVED

APPROVED DATE: May 5, 2020

BY THE COMMON COUNCIL  
OF MADISON, WISCONSIN

THE LOCATION AND INFORMATION FOR PROPOSED NEW TREES, IN THE PUBLIC RIGHT OF WAY OR ON PUBLIC LANDS ARE APPROXIMATE AND ARE SHOWN FOR REFERENCE ONLY. THE LOCATIONS, SPECIFICATIONS AND PLANTING METHODS OF ALL PROPOSED NEW OR REPLACEMENT TREES IN THE PUBLIC RIGHT OF WAY OR ON PUBLIC LANDS SHALL BE APPROVED BY THE CITY FORESTER PRIOR TO INSTALLATION.

NO TREES IN THE RIGHT OF WAY OR ON PUBLIC LANDS SHALL BE TRIMMED, PRUNED, REMOVED OR ADVERSELY AFFECTED IN ANY WAY UNTIL THE DEVELOPER HAS RECEIVED WRITTEN PERMISSION FROM THE CITY ENGINEER OR CITY FORESTER. SAID WRITTEN PERMISSION SHALL INCLUDE LANGUAGE INDICATING THAT SECTION 10.101 OF THE MADISON GENERAL ORDINANCES AND ADMINISTRATIVE PROCEDURE MEMORANDUM NO. 6-2, REFERING TO NOTIFICATION OF PROPERTY OCCUPANTS AND/OR OWNERS, HAS BEEN COMPLIED WITH.

DEVELOPER MUST SUBMIT A TRAFFIC CONTROL PLAN TO CITY TRAFFIC ENGINEERING AT LEAST 14 DAYS PRIOR TO THE START OF WORK. WORK SHALL NOT PROCEED UNTIL AN APPROVED TRAFFIC CONTROL PLAN IS IN PLACE.

ALL PAVEMENT IN THE MIDLAND STREET RIGHTS-OF-WAY SHALL BE TYPE B PAVEMENT PER STANDARD DETAIL DRAWING 4.02.

ALL PAVEMENT IN THE FISH HATCHERY ROAD RIGHT-OF-WAY SHALL BE TYPE C PAVEMENT PER STANDARD DETAIL DRAWING 4.02.

UNDERDRAINS SHALL BE INSTALLED PER STANDARD DETAIL DRAWING 4.05 FOR 75' ON EACH SIDE OF THE LOW POINT, OR TO THE NEAREST CURB HIGH POINT. ALL UNDERDRAIN SHALL BE WRAPPED.

ALL GUTTERS SHALL DRAIN WITH A MINIMUM GRADE OF 0.5% TOWARD STORM SEWER INLETS.

ALL DITCHES SHALL DRAIN WITH A MINIMUM GRADE OF 0.5%

THE CROSS SLOPE OF SIDEWALKS AND BARRIER FREE SIDEWALK CURB RAMPS SHALL TYPICALLY BE 1.5%. THE LONGITUDINAL GRADE OF BARRIER FREE SIDEWALK CURB RAMPS SHALL NOT EXCEED 8.33%. ALL SIDEWALK RAMPS SHALL BE CONSTRUCTED ACCORDING TO S.D.D. 3.04. AT ALL OTHER LOCATIONS THE LONGITUDINAL GRADE OF SIDEWALKS SHALL NOT EXCEED 5.0 % OR THE ADJACENT STREET GRADE WHICHEVER IS GREATER NOR BE LESS THAN 0.5% AND SHALL DRAIN TOWARD STORM SEWER INLETS. SIDE SLOPES WITHIN TEN FEET OF A PUBLIC SIDEWALK SHALL NOT EXCEED 4:1. ALL SIDEWALK AND SIDEWALK RAMP ELEVATIONS AND GRADES SHALL BE FIELD VERIFIED AND SET TO COMPLY WITH THE CITY OF MADISON STANDARD SPECIFICATIONS AND THE A.D.A. GUIDELINES.

OBTAIN A PRINT OUT OF THE ALIGNMENTS FROM THE CITY PROJECT ENGINEER PRIOR TO STAKING THIS PROJECT.

CURB STATION AND OFFSETS SHALL BE TO THE **EDGE OF PAVEMENT** UNLESS OTHERWISE INDICATED. CURB ELEVATIONS SHALL BE TO THE **EDGE OF PAVEMENT** UNLESS OTHERWISE INDICATED.

POWER POLES AND OTHER OBSTRUCTIONS SHALL BE MOVED TO PROVIDE 2 FEET MINIMUM OF CLEAR DISTANCE FROM ANY FACE OF CURB OR EDGE OF SIDEWALK.

ANY INFORMATION SHOWN ON THIS PLAN, WHICH IS NOT PART OF THIS RIGHT-OF-WAY PROJECT, IS PRELIMINARY AND NOT FOR CONSTRUCTION.

THERE MAY BE EXISTING UTILITIES OR OTHER FEATURES WHICH ARE EITHER NOT SHOWN OR SHOWN INCORRECTLY ON THIS PLAN. IT IS THE RESPONSIBILITY OF THE DEVELOPER TO LOCATE AND IDENTIFY ALL UTILITIES AND TOPOGRAPHY WHICH MAY AFFECT THE CONSTRUCTION OF THESE IMPROVEMENTS.

ALL PERMANENT SIGNING AND POSTING WILL BE DETERMINED AND PROVIDED BY THE TRAFFIC ENGINEERING DIVISION, FOLLOWING CONSTRUCTION OF THESE IMPROVEMENTS.

THE DEVELOPER SHALL PROVIDE, INSTALL AND MAINTAIN ALL STREET END BARRICADES, SIGNING AND TRAFFIC CONTROL, AS REQUIRED BY THE CITY TRAFFIC ENGINEER.

PAVEMENT SAWCUTS SHALL BE AS DIRECTED BY THE CITY CONSTRUCTION ENGINEER. SAWCUTS SHOWN ON THE PLAN ARE APPROXIMATE.

ALL WORK IN THE RIGHT OF WAY AND PUBLIC EASEMENTS SHALL BE IN ACCORDANCE WITH THE CITY OF MADISON STANDARD SPECIFICATIONS FOR PUBLIC WORKS CONSTRUCTION



12948

MADISON, WI


8894

CONTRACT NO:

GENERAL NOTES

SSM FISH HATCHERY RIAD CLINIC & CSM

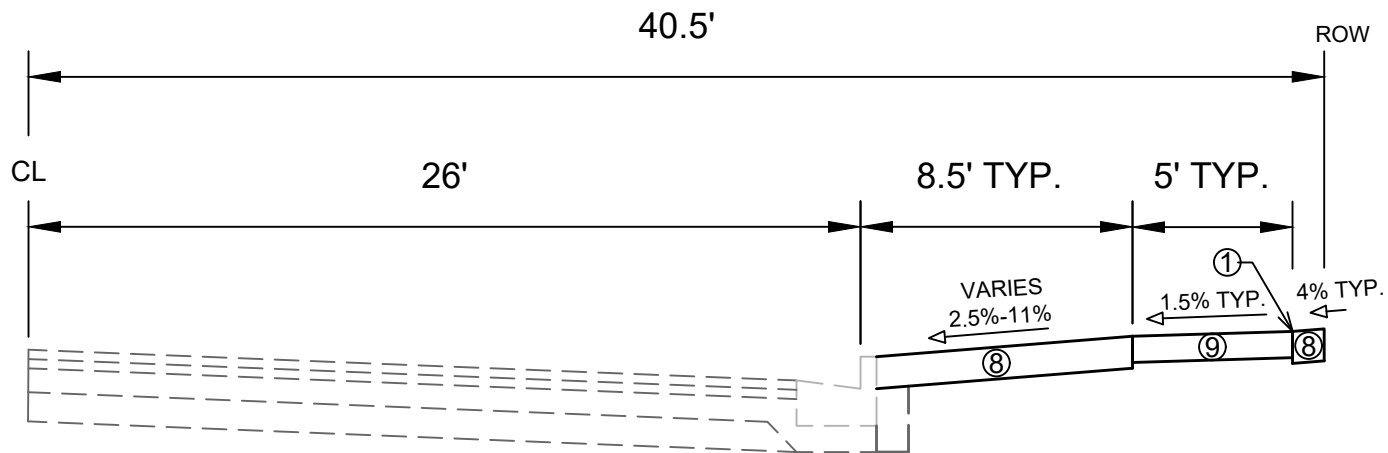
M:\DESIGN\Projects\12948\CAD\Plan Sheets\12948EN-Notes.dwg



12948

D-1

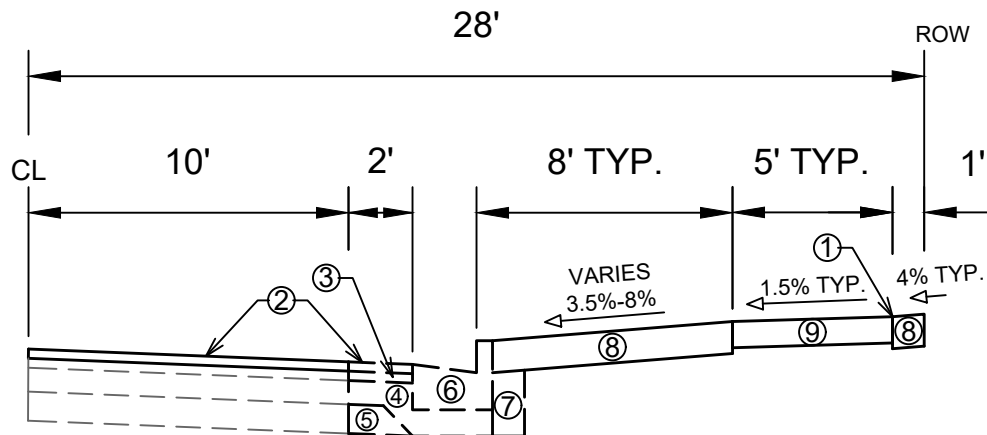
|                   |              |
|-------------------|--------------|
| DATE              | BY           |
| 9/23/2020 1:53 PM | 12948        |
| REVISION          | Scale: ##### |
| MARK              | 12948        |
| Designed By: ALZ  |              |



TYPICAL SECTION  
FISH HATCHERY ROAD SIDEWALK RIGHT  
STA 100+98.49 TO STA 108+35.07

- ① POINT REFERRED TO ON PLAN
- ⑦ FILL INCIDENTAL TO CURB AND GUTTER INSTALLATION
- ⑧ RESTORE DISTURBED AREAS W/ 6" TOPSOIL, SEED, AND EROSION MATTING
- ⑨ 5" CONCRETE SIDEWALK

SPECIAL NOTES:  
- TYPICAL SECTION NOT TO SCALE




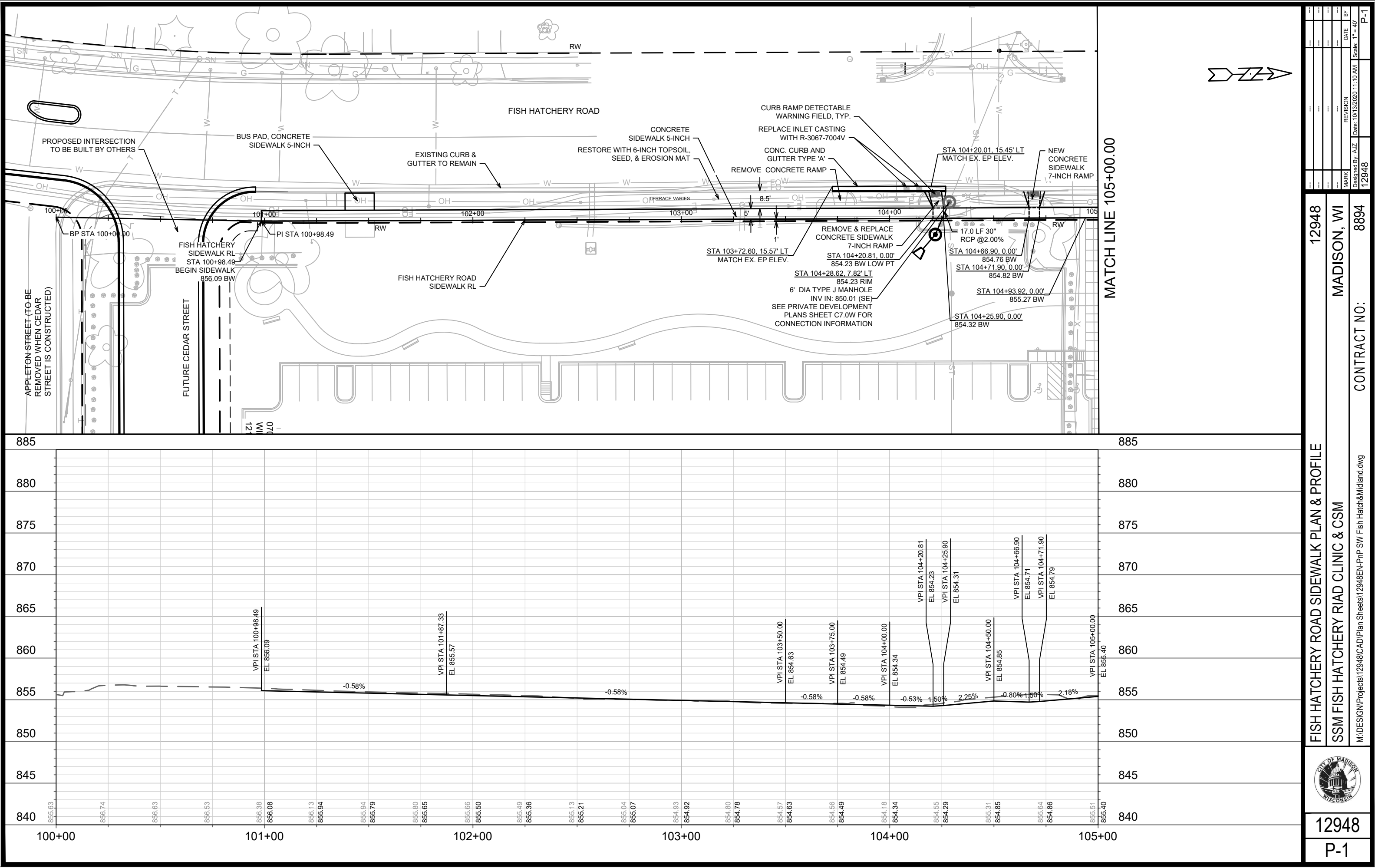
TYPICAL SECTION  
MIDLAND STREET SIDEWALK RIGHT  
STA 200+37.66 TO STA 203+50.00

- ① POINT REFERRED TO ON PLAN
- ② 2.00" HMA PAVEMENT, TYPE 4 LT 58-28 S (UPPER LAYER)
- ③ 2.50" HMA PAVEMENT, TYPE 3 LT 58-28 S (LOWER LAYER)
- ④ 6" GRADATION 2 CRUSHED AGGREGATE BASE COURSE (UPPER LAYER)
- ⑤ 6" GRADATION 1 CRUSHED AGGREGATE BASE COURSE (LOWER LAYER)
- ⑥ CONCRETE CURB AND GUTTER TYPE 'A', SEE P-SHEETS FOR LOCATIONS
- ⑦ FILL INCIDENTAL TO CURB AND GUTTER INSTALLATION
- ⑧ RESTORE DISTURBED AREAS W/ 6" TOPSOIL, SEED, AND EROSION MATTING
- ⑨ 5" CONCRETE SIDEWALK

SPECIAL NOTES:  
- TYPICAL SECTION NOT TO SCALE



|   |                  |                         |  |  |
|---|------------------|-------------------------|--|--|
|  | 12948            |                         |  |  |
|   | D-2              |                         |  |  |
|   | TYPICAL SECTIONS |                         |  |  |
|   | 12948            |                         |  |  |
|   | MADISON, WI      |                         |  |  |
| SSM FISH HATCHERY RIAD CLINIC & CSM   |                  |                         |  |  |
| M:\DESIGN\Projects\12948\CAD\Plan Sheets\12948EN-Typicals.dwg                         |                  |                         |  |  |
| CONTRACT NO:  |                  | 8894                    |  |  |
| 12948   |                  | D-2                     |  |  |
| MARK  |                  | REVISION                |  |  |
| DATE  |                  | BY                      |  |  |
| Desiged By: ###   |                  | Date: 9/23/2020 1:53 PM |  |  |
| Scale: #####  |                  |                         |  |  |



|  |  |                                     |  |  |  |
|--|--|-------------------------------------|--|--|--|
| 12948                                      |  | MADISON, WI                         |  | CONTRACT NO: 8894  |  |
| FISH HATCHERY ROAD SIDEWALK PLAN & PROFILE |  | SSM FISH HATCHERY RIAD CLINIC & CSM |  | M:\DESIGN\Projects\12948\CAD\Plan Sheets\12948EN-PnP SW Fish Hatch&Midland.dwg |  |
| 12948                                      |  | P-1                                 |  | P-1  |  |

DATE

10/13/2020 11:10 AM

REVISION

12948

MARK

12948

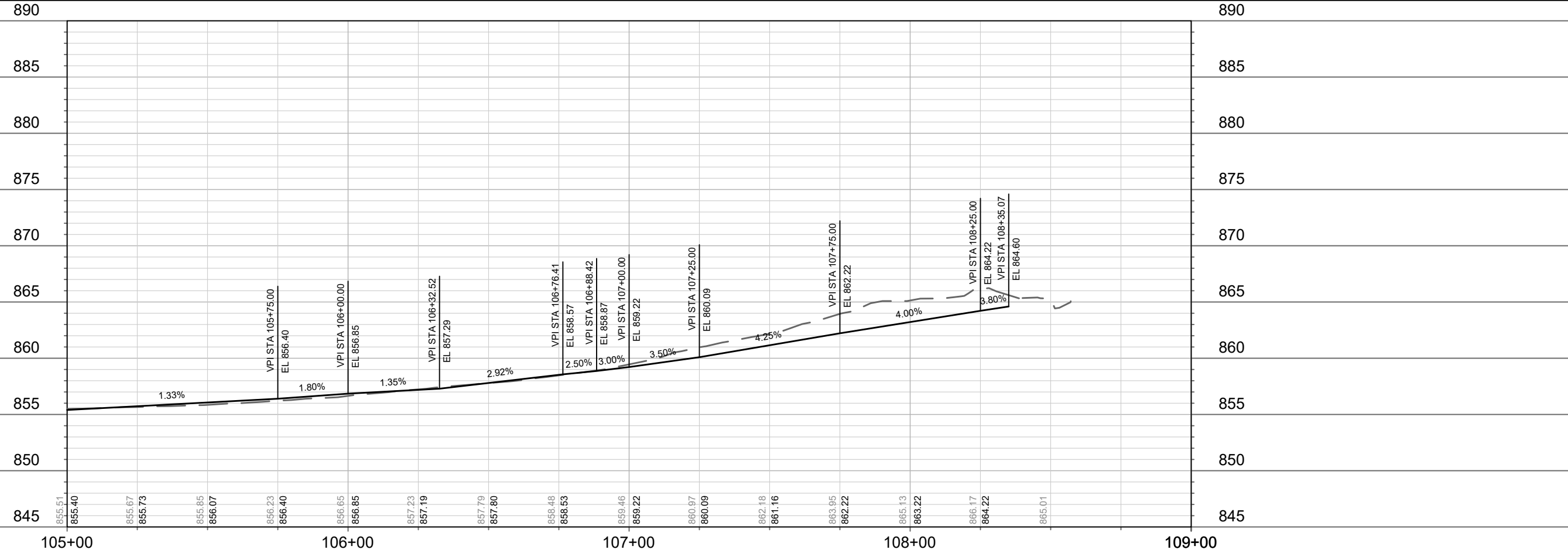
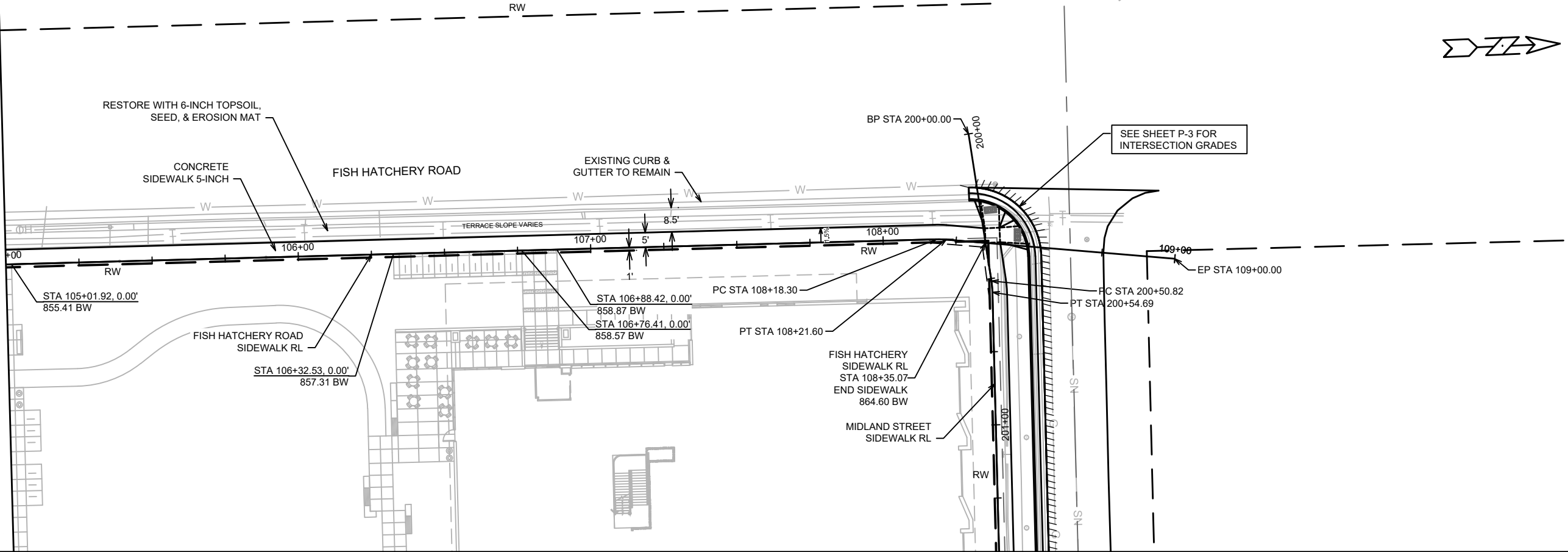
BY

P-1


Scale: 1" = 40'

Designed By: ALZ

MATCH LINE 105+00.00



|  |  |                                     |  |  |  |
|--|--|-------------------------------------|--|--|--|
| 12948                                      |  | MADISON, WI                         |  | CONTRACT NO: 8894  |  |
| FISH HATCHERY ROAD SIDEWALK PLAN & PROFILE |  | SSM FISH HATCHERY RIAD CLINIC & CSM |  | M:\DESIGN\Projects\12948\CAD\Plan Sheets\12948EN-PnP SW Fish Hatch&Midland.dwg |  |
| 12948                                      |  | P-2                                 |  | P-2  |  |

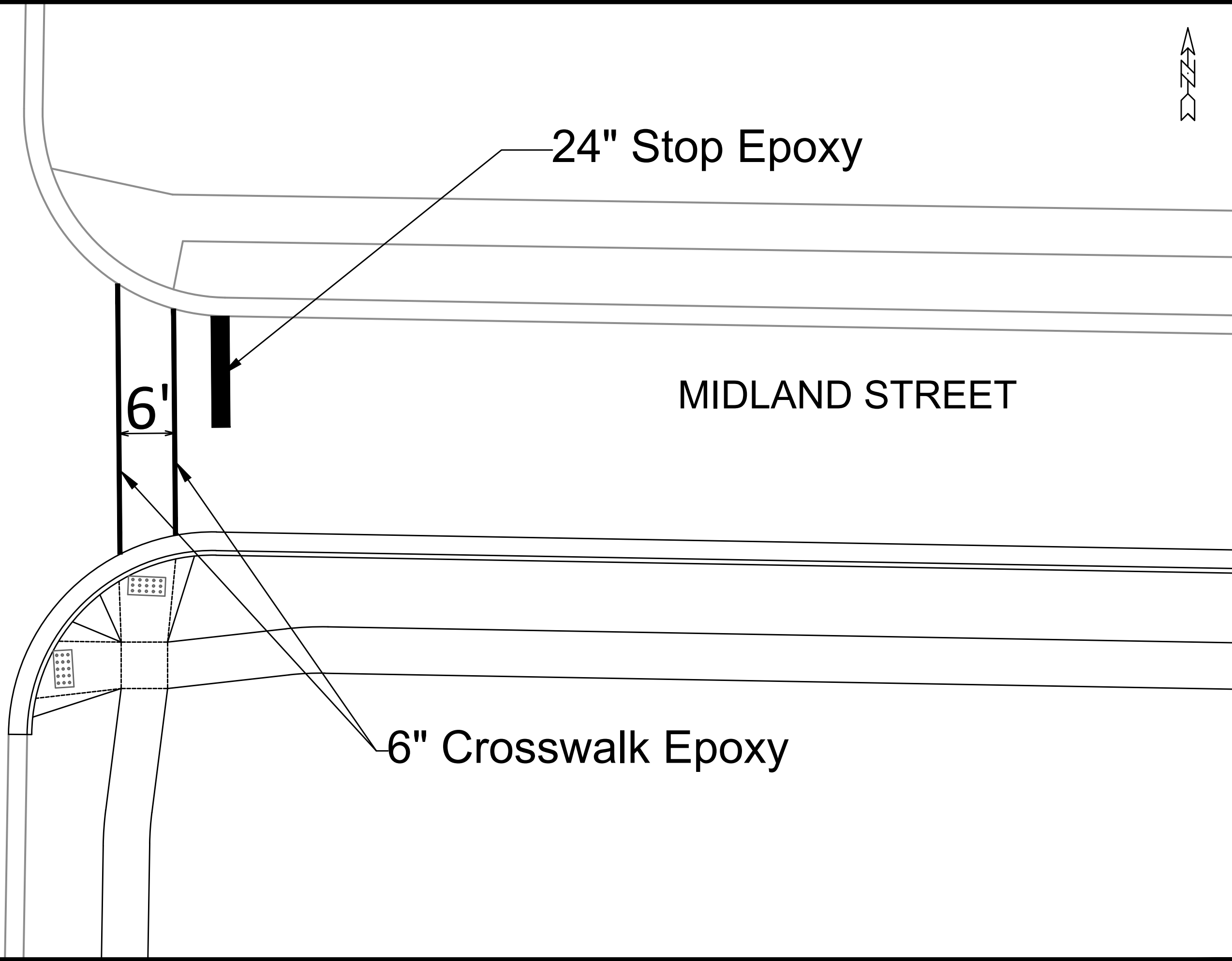


12948

P-2



FISH HATCHERY ROAD




6" Crosswalk Epoxy

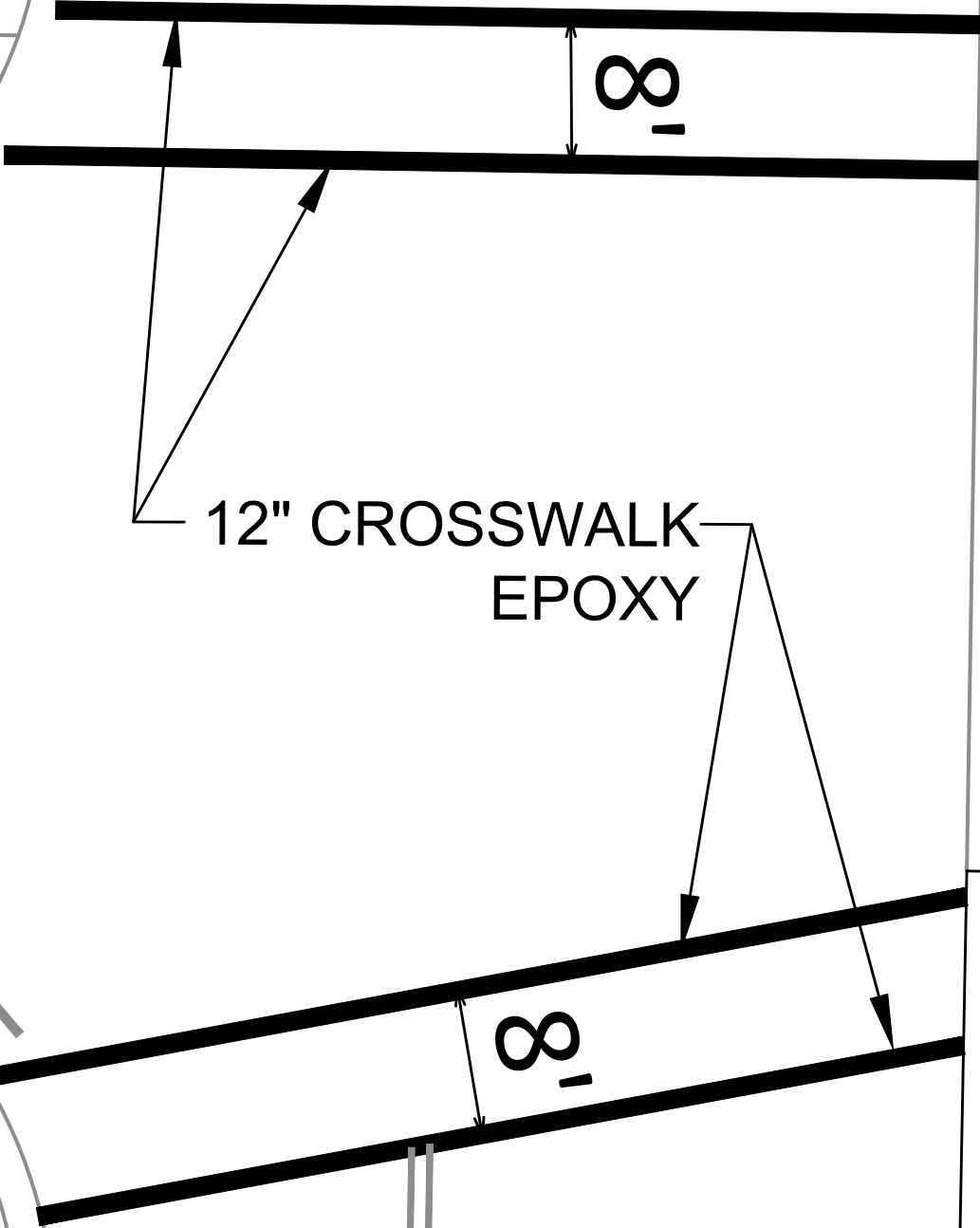
24" Stop Epoxy

MIDLAND STREET

6'


|   |                       |  |              |  |       |      |          |  |                   |  |     |  |
|---|-----------------------|--|--------------|--|-------|------|----------|--|-------------------|--|-----|--|
|  | PAVEMENT MARKING PLAN |  | 12948        |  | MARK  |      | REVISION |  | DATE              |  | BY  |  |
|   | SOUTH STREET          |  | MADISON.WI   |  | 12948 |      | 12948    |  | 9/23/2020 1:54 PM |  | M-1 |  |
| M:\DESIGN\Projects\12948\CAD\Traffic\12948TE-Pvmt-Mrk.dwg                             |                       |  | CONTRACT NO: |  |       | 8559 |          |  | Scale: 1:40       |  |     |  |

SPRUCE STREET



FISH HATCHERY ROAD

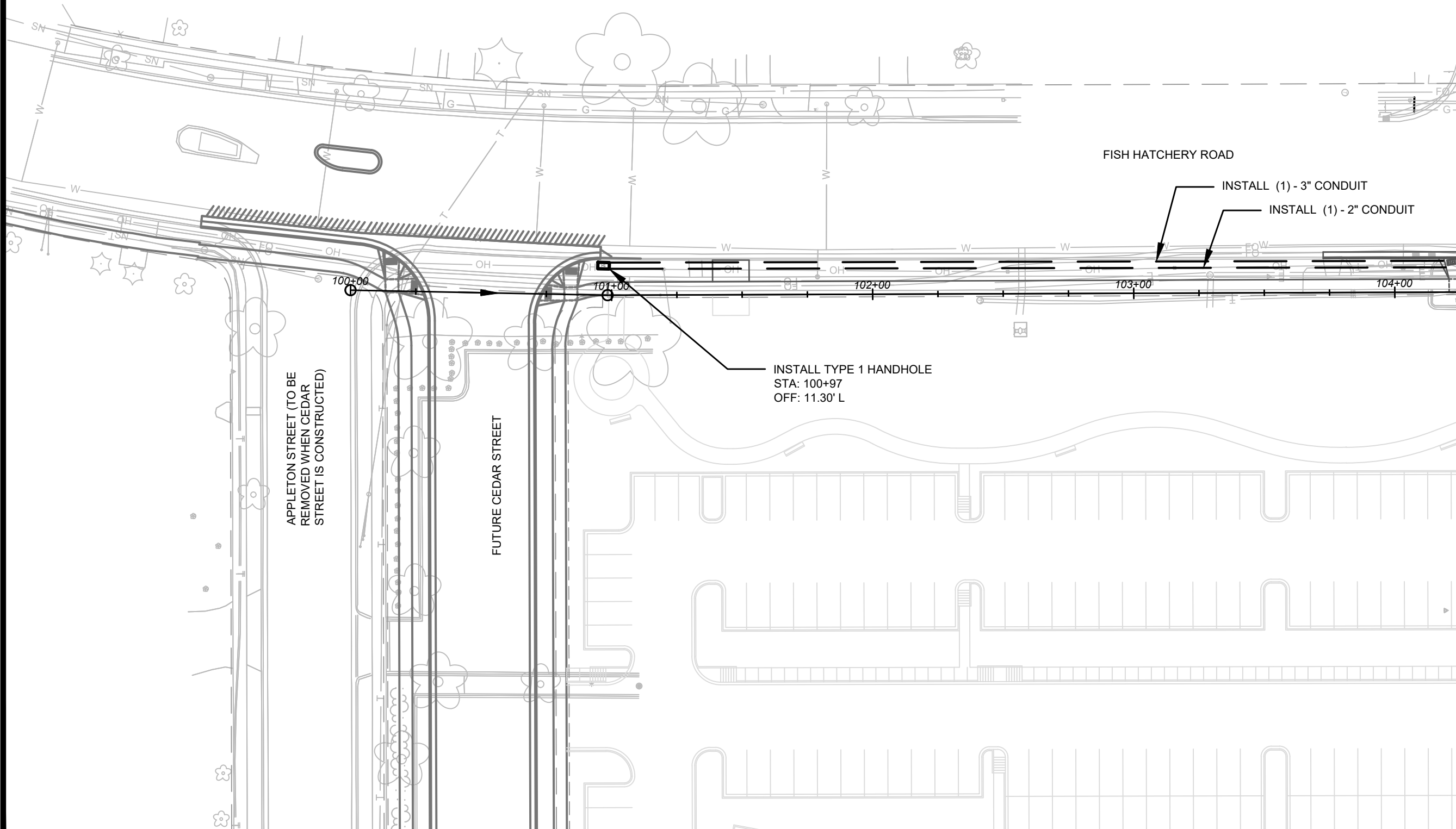


|   |   |                  |  |          |      |    |
|---|---|------------------|--|----------|------|----|
|  | 12948   |                  |  |          |      |    |
|   | M-2   |                  |  |          |      |    |
|   | PAVEMENT MARKING PLAN                                     |                  |  |          |      |    |
|   | 12948   |                  |  |          |      |    |
|   | SOUTH STREET  |                  |  |          |      |    |
|   | MADISON.WI  |                  |  |          |      |    |
|   | M:\DESIGN\Projects\12948\CAD\Traffic\12948TE-Pvmt-Mrk.dwg |                  |  |          |      |    |
|   | CONTRACT NO: 8559   |                  |  |          |      |    |
|   | 12948   |                  |  |          |      |    |
|   | M-2   |                  |  |          |      |    |
|   |   | Designed By: SDM |  | REVISION | DATE | BY |
|   |   | 12948            |  |          |      |    |
|   |   | Scale: 1:10      |  |          |      |    |

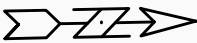



GENERAL ELECTRICAL NOTES:

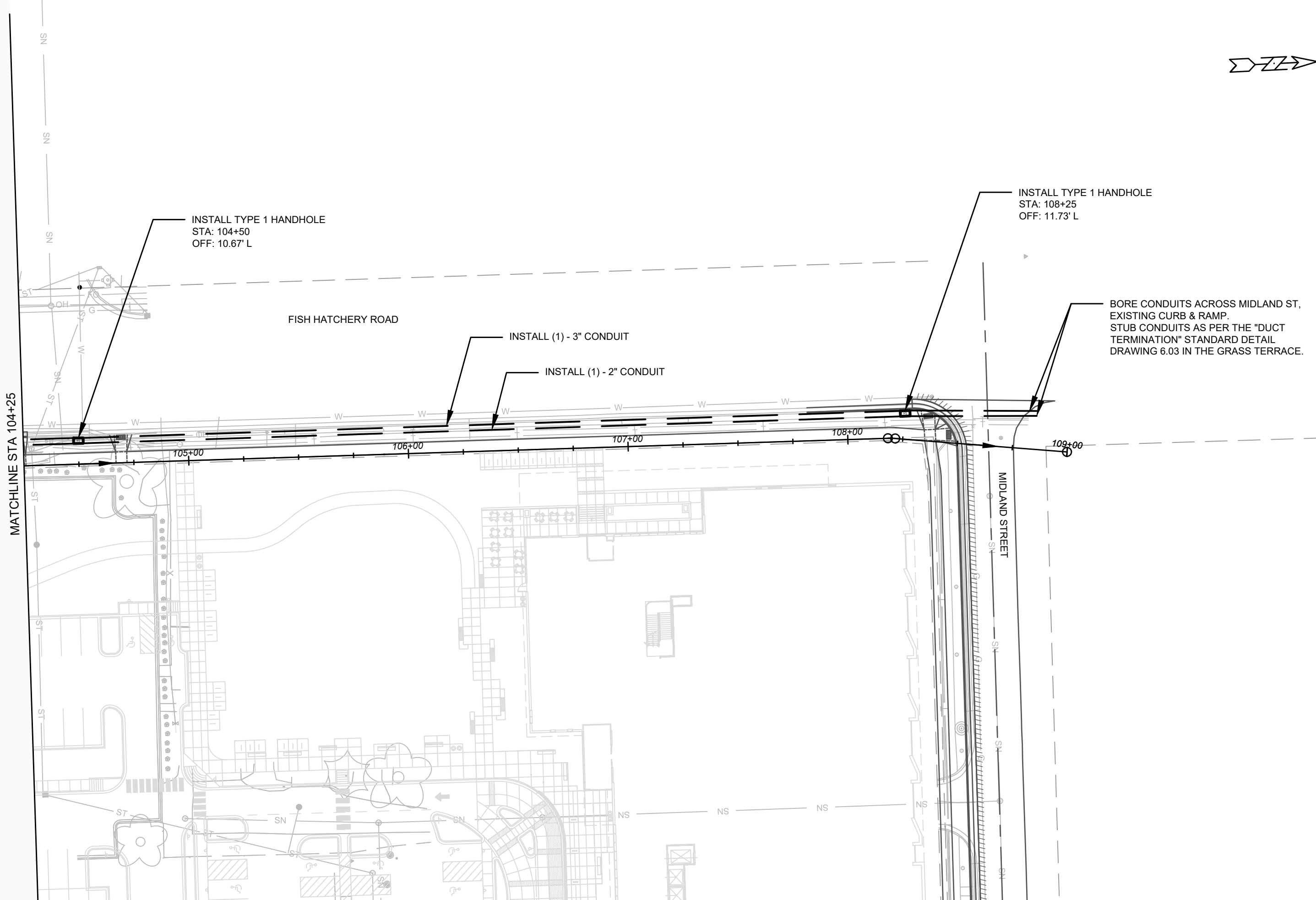
1. ALL LOCATIONS ARE APPROXIMATE. TRAFFIC ENGINEER SHALL APPROVE FINAL LOCATIONS INCLUDING SETBACK IN HE FIELD. AFTER CONTRACTOR SURVEYS STAKING, THE CONTRACTOR SHALL NOTIFY GRETCHEN AVILES PINEIRO (266-4899), AT LEAST 24-HOURS IN ADVANCE OF NEEDING BASE LOCATION MARKED.
2. THE CONTRACTOR SHALL DO ALL WORK IN ACCORDANCE WITH CITY OF MADISON STANDARD SPECIFICATIONS FOR PUBLIC WORKS CONSTRUCTION 2020 EDITION AND ALL ADDENDUMS THERETO.
3. ALL CONDUIT SHALL BE PVC SCHEDULE 80 UNDER PAVEMENT OR SCHEDULE 40 OTHERWISE. PULL WIRE REQUIRED AS PER STANDARD SPECIFICATIONS.
4. THE CONTRACTOR SHALL CALL TROY VANT (395-1975) AT THE TRAFFIC ENGINEERING SHOP AT LEAST 24-HOURS IN ADVANCE OF BURYING CONDUIT TO ARRANGE FOR INSPECTION.




MATCHLINE STA 104+25

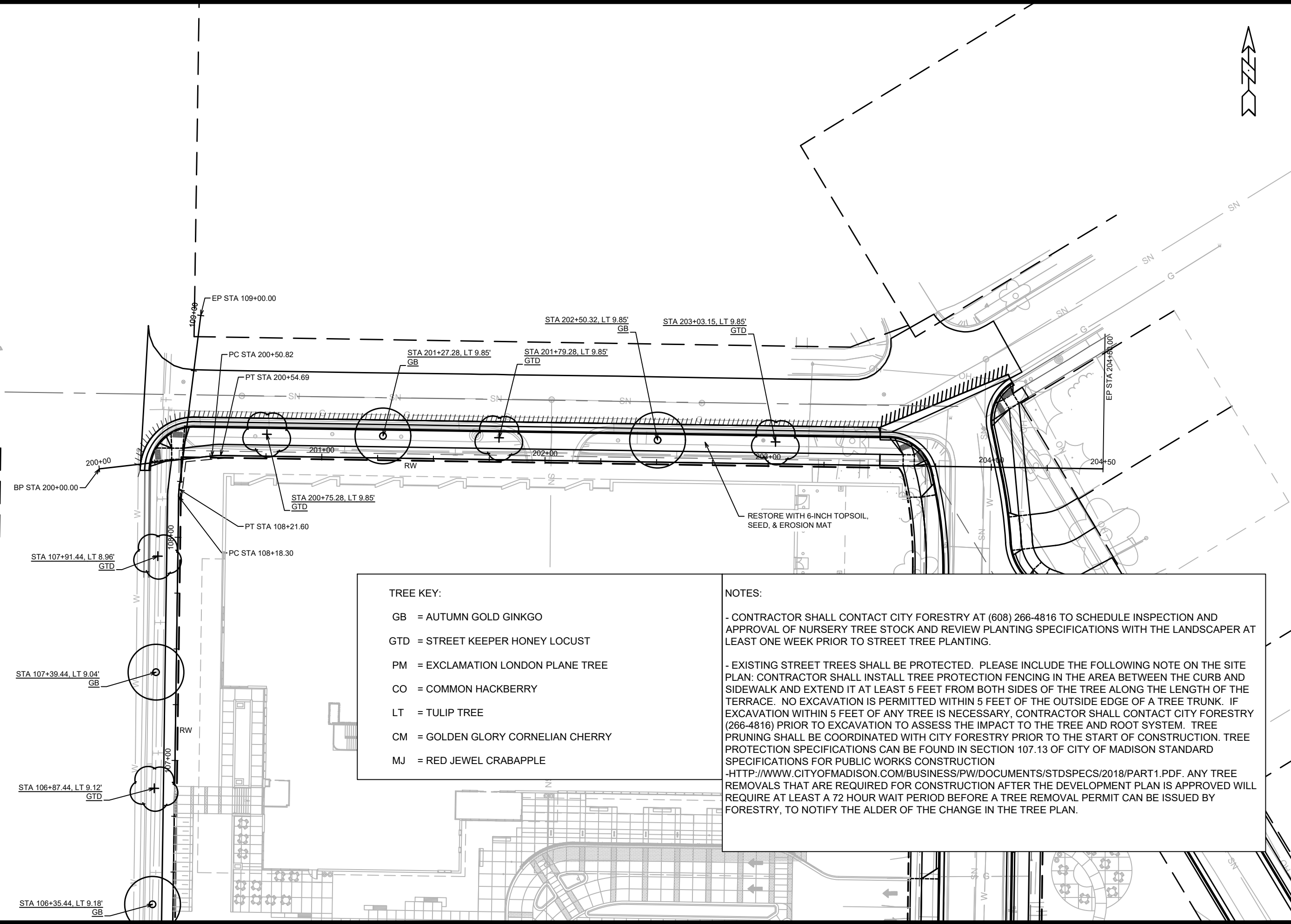


|   |                                     |                  |                         |             |                   |   |
|---|-------------------------------------|------------------|-------------------------|-------------|-------------------|---|
|  | ELECTRICAL PLANS                    |                  | 12948                   | MADISON, WI | CONTRACT NO: 8894 | M:\DESIGN\Projects\12948\CAD\Traffic\12948TE-Electrical.dwg |
|   | SSM FISH HATCHERY RIAD CLINIC & CSM |                  |                         |             |                   |   |
|   | 12948                               |                  | E-1                     |             |                   |   |
| MARK  |                                     | DESIGNED BY: GMA | DATE: 8/24/2020 3:46 PM | REVISION    | DATE              | BY  |
| 12948   |                                     |                  |                         |             |                   |   |



|   |   |          |                   |             |  |
|---|---|----------|-------------------|-------------|--|
|  | ELECTRICAL PLANS  |          | 12948             |             |  |
|   | SSM FISH HATCHERY RIAD CLINIC & CSM                         |          | MADISON, WI       |             |  |
|   | M:\DESIGN\Projects\12948\CAD\Traffic\12948TE-Electrical.dwg |          | CONTRACT NO: 8894 |             |  |
| 12948   |   | E-2      |                   | MARK: 12948 |  |
| DESIGNED BY: GMA  |   | REVISION |                   | DATE        |  |
| 8/25/2020 12:11 PM  |   | 1" = 40' |                   | BY          |  |





**TREE KEY:**

GB = AUTUMN GOLD GINKGO

GTD = STREET KEEPER HONEY LOCUST

PM = EXCLAMATION LONDON PLANE TREE

CO = COMMON HACKBERRY

LT = TULIP TREE

CM = GOLDEN GLORY CORNELIAN CHERRY

MJ = RED JEWEL CRABAPPLE

**NOTES:**

- CONTRACTOR SHALL CONTACT CITY FORESTRY AT (608) 266-4816 TO SCHEDULE INSPECTION AND APPROVAL OF NURSERY TREE STOCK AND REVIEW PLANTING SPECIFICATIONS WITH THE LANDSCAPER AT LEAST ONE WEEK PRIOR TO STREET TREE PLANTING.

- EXISTING STREET TREES SHALL BE PROTECTED. PLEASE INCLUDE THE FOLLOWING NOTE ON THE SITE PLAN: CONTRACTOR SHALL INSTALL TREE PROTECTION FENCING IN THE AREA BETWEEN THE CURB AND SIDEWALK AND EXTEND IT AT LEAST 5 FEET FROM BOTH SIDES OF THE TREE ALONG THE LENGTH OF THE TERRACE. NO EXCAVATION IS PERMITTED WITHIN 5 FEET OF THE OUTSIDE EDGE OF A TREE TRUNK. IF EXCAVATION WITHIN 5 FEET OF ANY TREE IS NECESSARY, CONTRACTOR SHALL CONTACT CITY FORESTRY (266-4816) PRIOR TO EXCAVATION TO ASSESS THE IMPACT TO THE TREE AND ROOT SYSTEM. TREE PRUNING SHALL BE COORDINATED WITH CITY FORESTRY PRIOR TO THE START OF CONSTRUCTION. TREE PROTECTION SPECIFICATIONS CAN BE FOUND IN SECTION 107.13 OF CITY OF MADISON STANDARD SPECIFICATIONS FOR PUBLIC WORKS CONSTRUCTION

-[HTTP://WWW.CITYOFMADISON.COM/BUSINESS/PW/DOCUMENTS/STDSPESCS/2018/PART1.PDF](http://www.cityofmadison.com/business/pw/documents/stdspecs/2018/PART1.PDF). ANY TREE REMOVALS THAT ARE REQUIRED FOR CONSTRUCTION AFTER THE DEVELOPMENT PLAN IS APPROVED WILL REQUIRE AT LEAST A 72 HOUR WAIT PERIOD BEFORE A TREE REMOVAL PERMIT CAN BE ISSUED BY FORESTRY, TO NOTIFY THE ALDER OF THE CHANGE IN THE TREE PLAN.

|                               |  |  |  |              |  |
|-------------------------------|--|--|--|--------------|--|
| 12948                         |  | MADISON, WI  |  | 8894         |  |
| MIDLAND STREET LANDSCAPE PLAN |  | SSM FISH HATCHERY RIAD CLINIC & CSM                                |  | CONTRACT NO: |  |
| 12948                         |  | L-2  |  | L-2          |  |
| CITY OF MADISON WISCONSIN     |  | M:\DESIGN\Projects\12948\CAD\Plan Sheets\12948EN-LandscapePlan.dwg |  | 12948        |  |
| DATE                          |  | REVISION   |  | BY           |  |
| 9/23/2020 1:55 PM             |  |  |  |              |  |
| Designed By: ALZ              |  | Scale: #####   |  | L-2          |  |