



Madison, Wisconsin

INDEX OF SHEETS

SHEET NO. U1 UTILITY PLAN

CITY OF MADISON
CITY ENGINEERING DIVISION
DEPARTMENT OF PUBLIC WORKS
PLAN OF PROPOSED IMPROVEMENT
502 W WASHINGTON AVENUE:
UTILITIES ONLY

PUBLIC IMPROVEMENT PROJECT
APPROVED

OCTOBER 20, 2020

BY THE COMMON COUNCIL
OF MADISON, WISCONSIN

PUBLIC IMPROVEMENT DESIGN
APPROVED BY:

Greg Fries

Apr 6, 2021

City Engineer

Date

STORM SEWER
DESIGNED BY:

LATERALS
ONLY

SANITARY SEWER
DESIGNED BY:

LATERALS
ONLY

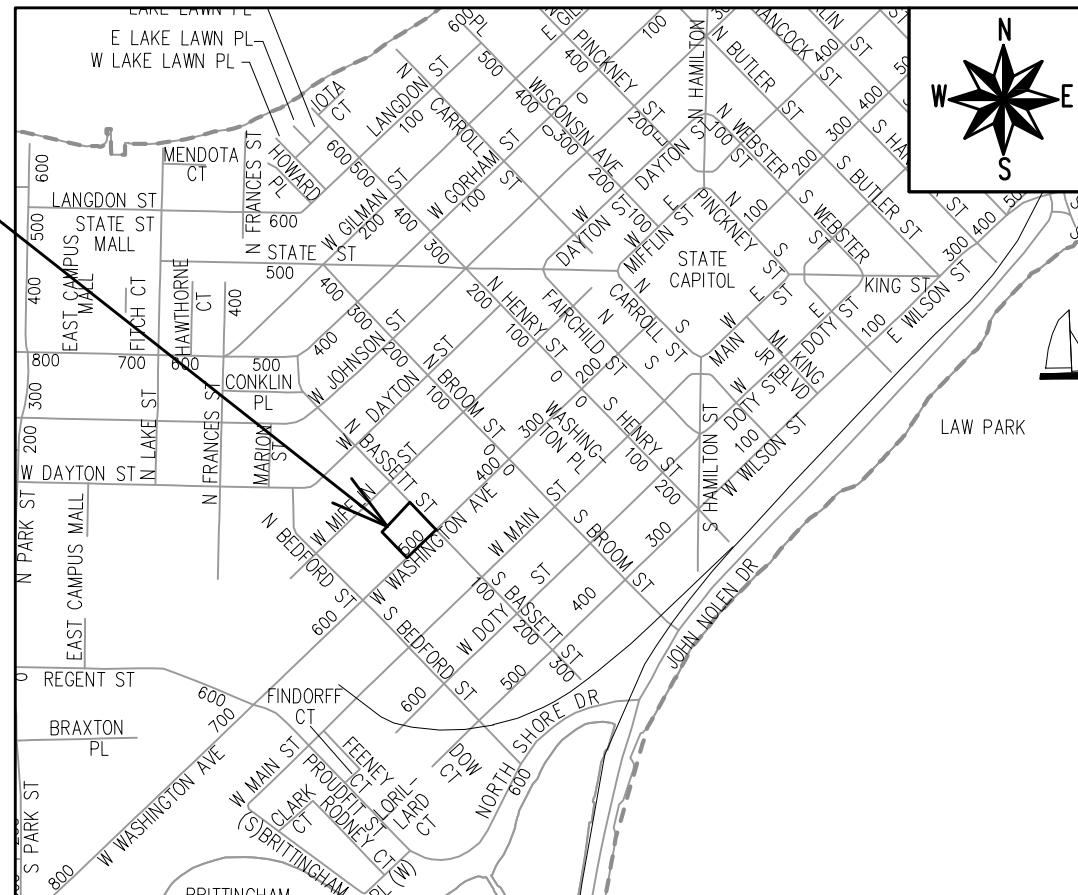
WATER
DESIGNED BY:

LATERALS
ONLY

CITY PROJECT NO. 13273
CONTRACT NO. 8978

PROJECT
LOCATION

Table with 2 columns: Utility Type and Symbol. Includes: GAS (G), STORM SEWER (ST), SANITARY SEWER (SN), WATER (W), BURIED ELECTRIC (E), OVERHEAD ELECTRIC (OH), POWER POLE, ADA COMPLIANT RAMP W/ DETECTABLE WARNING FIELD, COMBUSTIBLE FLUIDS.



PLOT SCALE: 1:1\_XREF

PLOT NAME:

REV. DATE: 3/30/2021 3:35 PM

ORIGINATOR: CITY\_OF\_MADISON

PART OF LOT 8

- NOTES:
1. PLUG AND CAP EXISTING SANITARY LATERAL (AT PROPERTY LINE) BY APPLICANT (PERMIT REQUIRED)
  2. ABANDON EX. WATER LATERAL. REMOVE METER, SHUT CURB STOP, AND CAP AT PROPERTY LINE
  3. 2" MILL & OVERLAY. FINAL REPAIR LIMITS BY CONSTRUCTION ENGINEER.
  4. WARNING: ULO REQUIRED. GAS, FIBER OPTIC, COMMUNICATION, ELECTRIC, OVERHEAD ELECTRIC, STORM SEWER AND SANITARY SEWER CROSSINGS IN THIS AREA.
  5. 12" CITY SEWER HAS A LINER INSIDE OF CLAY PIPE. CUT LINER WHEN REMOVING PIPE TO INSTALL NEW MANHOLE.
  6. ALL PERMANENT SIGNING AND POSTING WILL BE DETERMINED AND PROVIDED BY THE TRAFFIC ENGINEERING DIVISION, FOLLOWING CONSTRUCTION OF THESE IMPROVEMENTS.
  7. THE DEVELOPER SHALL PROVIDE, INSTALL AND MAINTAIN ALL STREET END BARRICADES, SIGNING AND TRAFFIC CONTROL, AS REQUIRED BY THE CITY TRAFFIC ENGINEER.
  8. THE CONTRACTOR SHALL SUBMIT A TRAFFIC CONTROL PLAN FOR REVIEW TO THE CITY TRAFFIC ENGINEERING DIVISION AT LEAST 10 WORKING DAYS PRIOR TO WORK BEGINNING. THE TRAFFIC CONTROL PLAN SHALL COMPLY WITH ALL MUTCD REQUIREMENTS. WORK SHALL NOT PROCEED UNTIL THE TRAFFIC CONTROL PLAN HAS BEEN APPROVED. THE TRAFFIC CONTROL PLAN MAY INCLUDE BUT IS NOT LIMITED TO: LANE CLOSURE RESTRICTIONS, PEAK HOUR WORKING RESTRICTIONS, ACCESS REQUIREMENTS, ETC. THE CONTRACTOR SHALL BE RESPONSIBLE FOR PHASING WORK AS NECESSARY TO MEET THE REQUIREMENTS OF THE APPROVED TRAFFIC CONTROL PLAN.
  9. POWER POLES AND OTHER OBSTRUCTIONS SHALL BE MOVED TO PROVIDE 2 FEET MINIMUM OF CLEAR DISTANCE FROM ANY FACE OF CURB OR EDGE OF SIDEWALK.
  10. THERE MAY BE EXISTING UTILITIES OR OTHER FEATURES WHICH ARE EITHER NOT SHOWN OR SHOWN INCORRECTLY ON THIS PLAN. IT IS THE RESPONSIBILITY OF THE DEVELOPER TO LOCATE AND IDENTIFY ALL UTILITIES AND TOPOGRAPHY WHICH MAY AFFECT THE CONSTRUCTION OF THESE IMPROVEMENTS.
  11. COORDINATE RELOCATION OR ADJUSTING OF PRIVATE UTILITY FACILITIES, SUCH AS POLES, PEDESTALS, BOXES, STRUCTURES, CASTINGS OR HANDHOLES, WITH PRIVATE UTILITY COMPANIES.
- \* CONTRACTOR TO VERIFY ELEVATION AND SIZE PRIOR TO CONSTRUCTION. CONTACT THE ENGINEER FOR REDESIGN IF THERE IS ANY DISCREPANCY. CONNECTION TO BE IN ACCORDANCE WITH THE CITY OF MADISON STANDARD SPECIFICATION FOR PUBLIC WORKS CONSTRUCTION.

☒ - PATCHING/ MILL & OVERLAY

502 W. WASHINGTON

PART OF LOT 13

I.E.=850.59 (SE PR. 10" HDPE)

41 LF OF 10" PVC @ 1.0%

NEW SANITARY SEWER ACCESS STRUCTURE\*  
EI(12")SW=847.74 (EX. LINED VP)  
EI(12")NE=847.73 (EX. LINED VP)  
I.E.(NW)=848.30 (PR. 10" PVC)

I.E.=848.71

EX. 12" LINED VP SAN

INSTALL EMB

INSTALL EMB

46 LF OF 10" HDPE @ 1.50%

TAP EXISTING STORM SEWER ACCESS STRUCTURE\*  
I.E.=849.90 (NW PR. 10" HDPE) TAP  
I.E.=848.9 (SW/NE EX. 24" VCP)

EX. 12" LINED VP SAN

80 LF OF 8" DUCTILE IRON PIPE

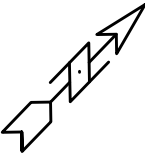
TAP NEW WATER SERVICE INTO EXISTING 6" CAST IRON WATER MAIN. ADD SHUTOFF VALVE AT TAP.

PRICHETTE PLAT OF MADISON  
BLOCK 43

N. BASSETT STREET

W. WASHINGTON AVENUE

CONTRACTOR SHALL TAKE PRECAUTIONS DURING CONSTRUCTION TO NOT DISFIGURE, SCAR, OR IMPAIR THE HEALTH OF ANY STREET TREE. CONTRACTOR SHALL OPERATE EQUIPMENT IN A MANNER AS TO NOT DAMAGE THE BRANCHES OF THE STREET TREE(S). THIS MAY REQUIRE USING SMALLER EQUIPMENT AND LOADING AND UNLOADING MATERIALS IN A DESIGNATED SPACE AWAY FROM TREES ON THE CONSTRUCTION SITE. ANY DAMAGE OR INJURY TO EXISTING STREET TREES (EITHER ABOVE OR BELOW GROUND) SHALL BE REPORTED IMMEDIATELY TO CITY FORESTRY AT 608-266-4816. PENALTIES AND REMEDIATION SHALL BE REQUIRED. SECTION 107.13(G) OF CITY OF MADISON STANDARD SPECIFICATIONS FOR PUBLIC WORKS CONSTRUCTION ADDRESSES SOIL COMPACTION NEAR STREET TREES AND SHALL BE FOLLOWED BY CONTRACTOR. THE STORAGE OF PARKED VEHICLES, CONSTRUCTION EQUIPMENT, BUILDING MATERIALS, REFUSE, EXCAVATED SPOILS OR DUMPING OF POISONOUS MATERIALS ON OR AROUND TREES AND ROOTS WITHIN FIVE (5) FEET OF THE TREE OR WITHIN THE PROTECTION ZONE IS PROHIBITED.



DATE	BY
REVISION	
MARK	
Designed By: ID	Date: 4/27/2021 8:55 AM
Scale: 1"=40'	U-1

13273  
MADISON, WI  
CONTRACT NO.: 8978

UTILITY PLAN  
502 W WASHINGTON AVENUE  
M:\DESIGN\Projects\13273\CAD\Streets\13273EN-PnP.dwg



13273  
U-1