

Madison, Wisconsin

CITY OF MADISON
CITY ENGINEERING DIVISION
DEPARTMENT OF PUBLIC WORKS
PLAN OF PROPOSED IMPROVEMENT

INDEX OF SHEETS

SHEET NO.	D1	STANDARD NOTES
SHEET NO.	D2 - D3	TYPICAL SECTION
SHEET NO.	P1 - P-2	STREET PLAN & PROFILE
SHEET NO.	U1	WALDORF BLVD UTILITY PLAN AND PROFILE
SHEET NO.	U2	MID TOWN ROAD UTILITY PLAN
SHEET NO.	PM1 - PM2	PAVEMENT MARKING PLAN
SHEET NO.	X1	CROSS SECTIONS
NO MAINTENANCE PLAN REQUIRED		

REVISION
REV#1 - SHEETS D1, D2, D3, P1, P2, PM1, PM2 & X1
ADDED. SHEETS U1, & U2 UPDATED

8110 MID TOWN ROAD

CITY PROJECT NO. 13277
CONTRACT NO. 8983

PUBLIC IMPROVEMENT PROJECT
APPROVED

MAY 24, 2022

BY THE COMMON COUNCIL
OF MADISON, WISCONSIN

PUBLIC IMPROVEMENT DESIGN
APPROVED BY:

Julie

09/12/2025

City Engineer

Date

STREET
DESIGNED BY:



09/12/2025

PAVEMENT MARKING
DESIGNED BY:

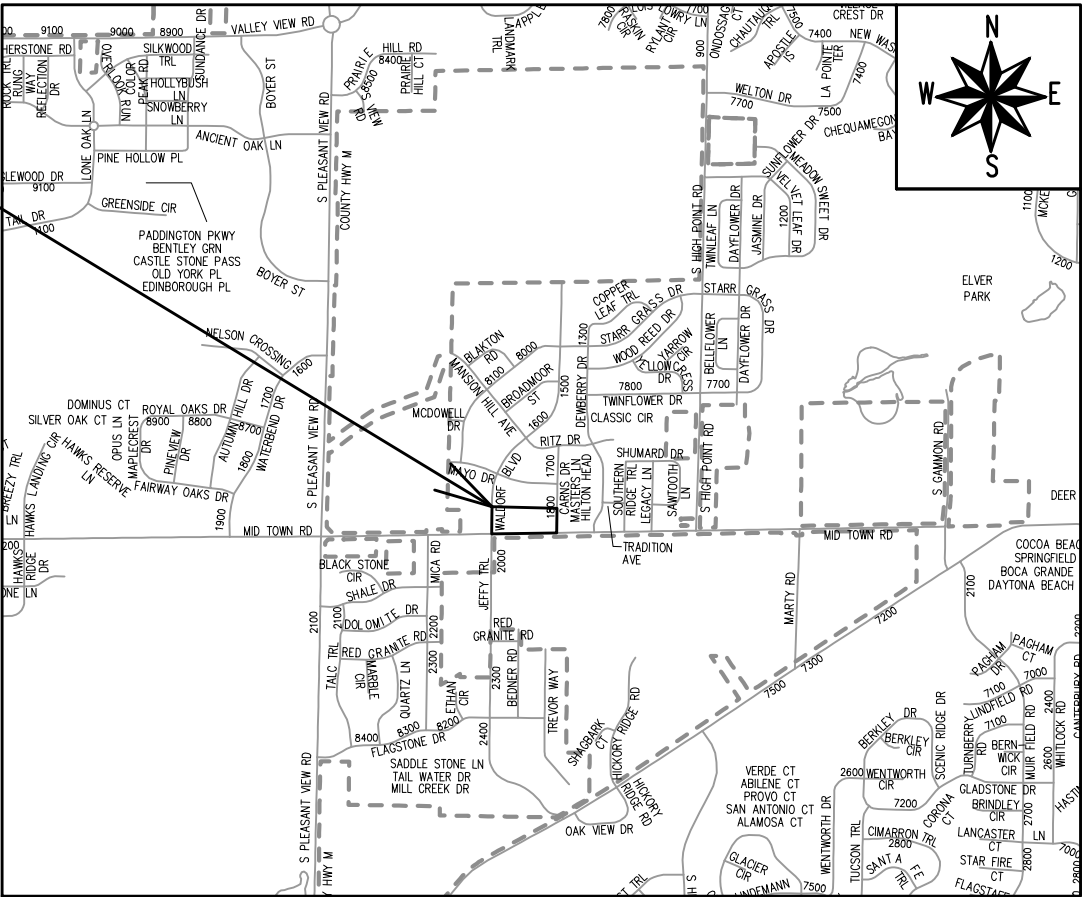


09/15/2025

STORM SEWER
DESIGNED BY:

SEE
INDIVIDUAL
SHEETS

PROJECT
LOCATION



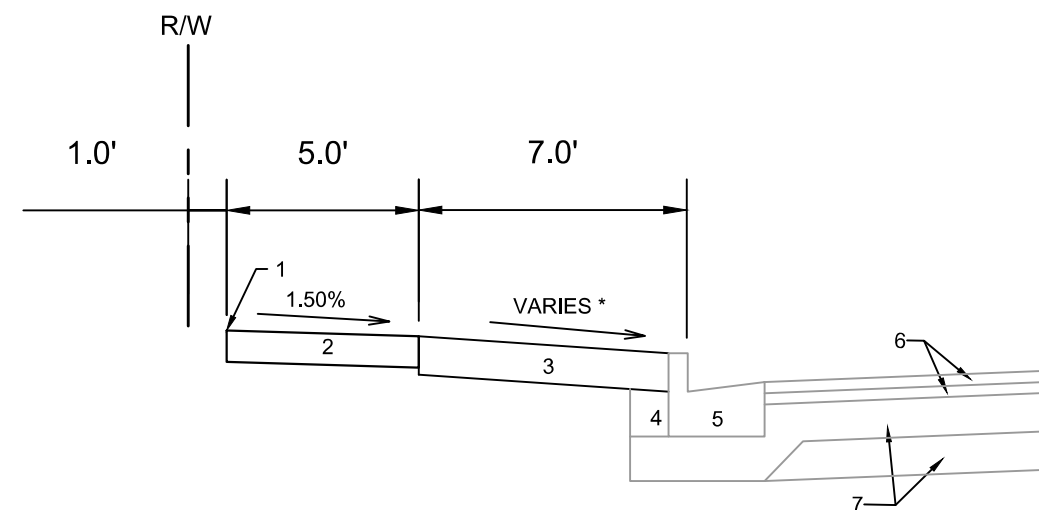
PLOT SCALE: 1"=1' XREF

PLOT NAME: ----

REV. DATE: 9/11/2025 2:13 PM

ORIGINATOR: CITY_OF_MADISON

REV#1 - IO
New sheet added.



TYPICAL SECTION
MID TOWN ROAD

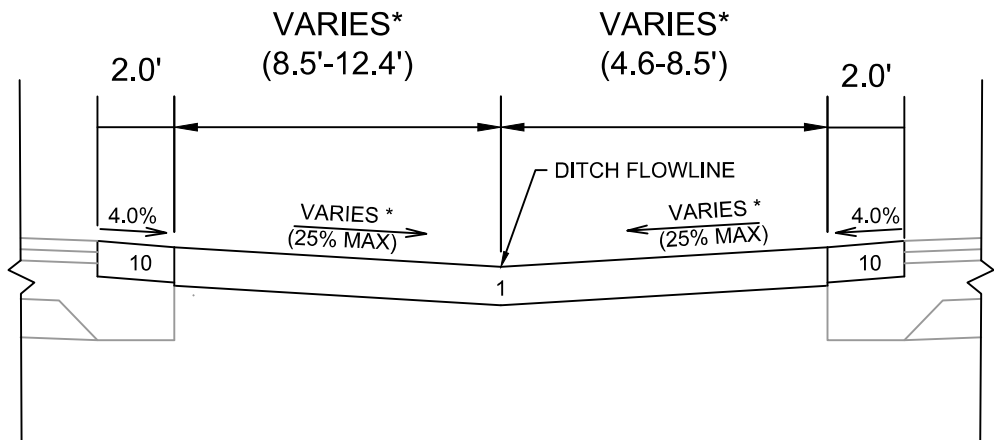
SPECIAL NOTES:

*SEE X SHEETS FOR PROPOSED SURFACE SLOPES.

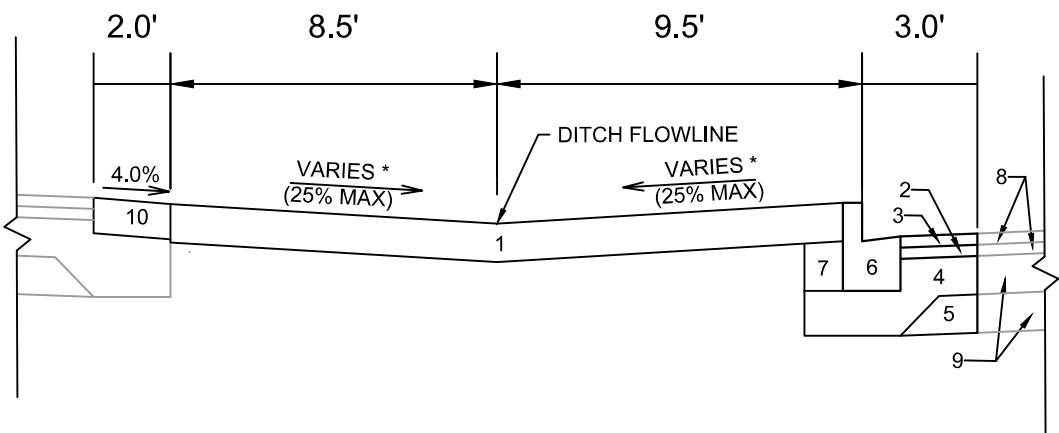
1. POINT REFERRED TO ON PROFILE.
2. 5" CONCRETE SIDEWALK.
3. 6" TOPSOIL, SEED, AND MATTING.
4. EX. FILL TO REMAIN
5. EX. CONCRETE CURB AND GUTTER TYPE 'A' TO REMAIN, REPLACE IN LOCATIONS IDENTIFIED IN P SHEETS OR AS DIRECTED BY THE CITY CONSTRUCTION ENGINEER.
6. EX. H.M.A. PAVEMENT TO REMAIN.
7. EX. CRUSHED AGGREGATE BASE COURSE TO REMAIN.

	13277	D-2			
	TYPICAL SECTIONS	13277			
	8110 MIDTOWN ROAD	MADISON, WI			
	CONTRACT NO: 8983				
	M:\DESIGN\Projects\13277\CAD\Streets\13277EN+Details.dwg				
MARK		REVISION		DATE	BY
Designed By: JO		Date: 9/12/2025 10:40 AM		Scale:	
13277				D-2	

REV#1 - IO
New sheet added.



TYPICAL SECTION
MID TOWN ROAD - MEDIAN
(STA 13+32 TO STA 13+96)



TYPICAL SECTION
MID TOWN ROAD - MEDIAN
(STA 13+04 TO STA 13+32)

SPECIAL NOTES:

*SEE X SHEETS FOR PROPOSED SURFACE SLOPES.

1. 6" TOPSOIL, SEED, AND MATTING.
2. 2.0" H.M.A. PAVEMENT- TYPE 4 MT 58-28 S*
3. 3.5" H.M.A. PAVEMENT- TYPE 3 MT 58-28 S
4. 6" CRUSHED AGGREGATE BASE COURSE GRADATION 2
5. 6" CRUSHED AGGREGATE BASE COURSE GRADATION 1
6. CONCRETE CURB AND GUTTER TYPE 'G'.
7. FILL
8. EX. H.M.A. PAVEMENT TO REMAIN.
9. EX. CRUSHED AGGREGATE BASE COURSE TO REMAIN.
10. 1.0" CRUSHED AGGREGATE BASE COURSE GRADATION 3 OVER 4.5"
CRUSHED AGGREGATE BASE COURSE GRADATION 2

TYPICAL SECTIONS

8110 MIDTOWN ROAD

M:\DESIGN\Projects\13277\CAD\Streets\13277EN-Details.dwg

13277

MADISON, WI

8983

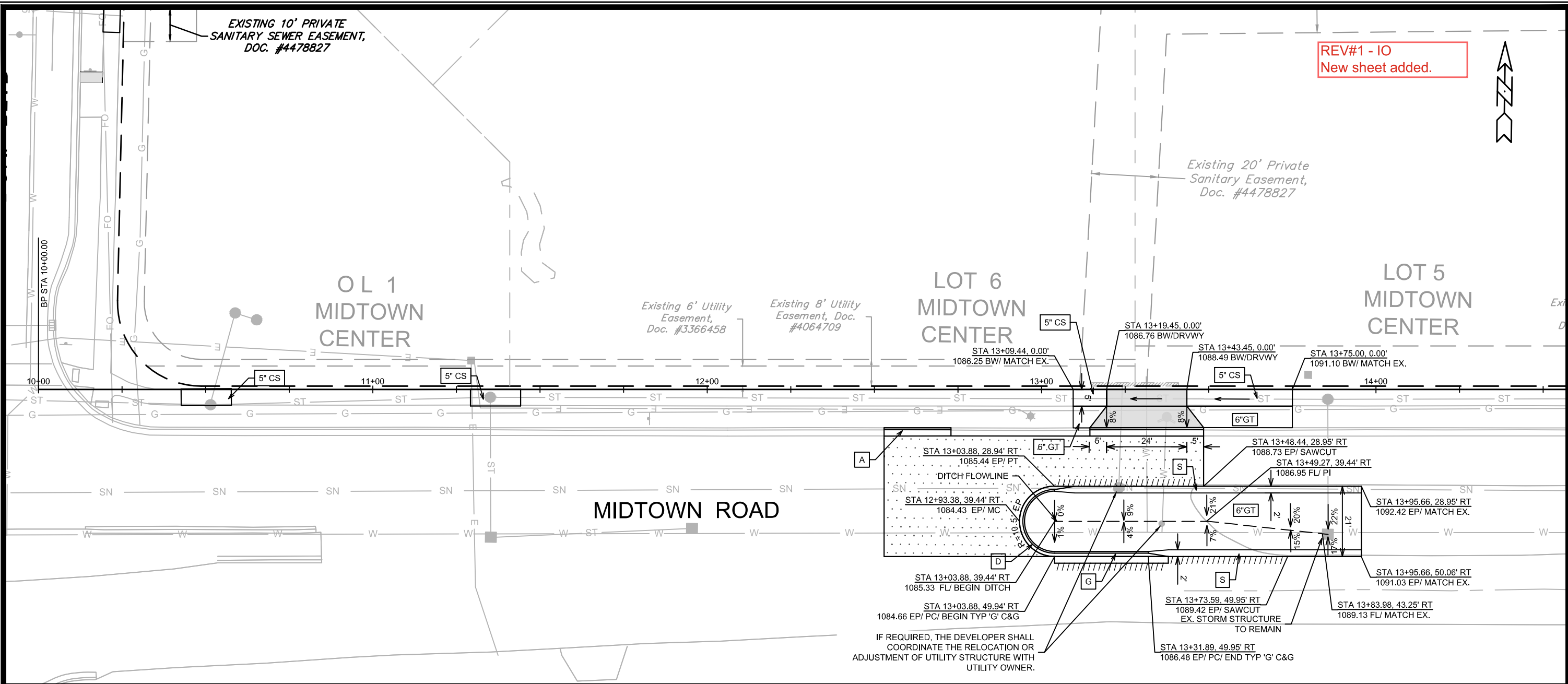
CONTRACT NO:



13277

D-3

MARK	REVISION	DATE	BY
13277	Date: 9/12/2025 10:53 AM	Scale:	
		D-3	



REV#1 - IO
New sheet added.



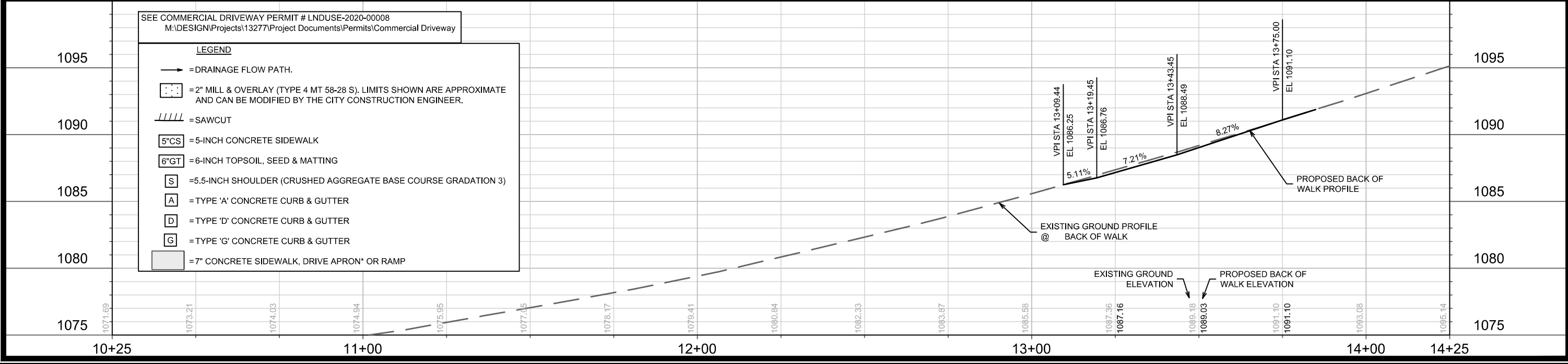
BY	DATE	REVISION	Scale: 1:30	P-1
MARK	13277	13277	13277	13277

13277
MADISON, WI
CONTRACT NO: 8983

STREET PLAN & PROFILE - MIDTOWN ROAD
8110 MIDTOWN ROAD
M:\DESIGN\Projects\13277\CAD\Streets\13277\EN-PnP.dwg



13277
P-1



SEE COMMERCIAL DRIVEWAY PERMIT # LNDUSE-2020-00008
M:\DESIGN\Projects\13277\Project Documents\Permits\Commercial Driveway

LEGEND

→ = DRAINAGE FLOW PATH.

[Pattern] = 2" MILL & OVERLAY (TYPE 4 MT 58-28 S). LIMITS SHOWN ARE APPROXIMATE AND CAN BE MODIFIED BY THE CITY CONSTRUCTION ENGINEER.

[Pattern] = SAWCUT

[5"CS] = 5-INCH CONCRETE SIDEWALK

[6"GT] = 6-INCH TOPSOIL, SEED & MATTING

[S] = 5.5-INCH SHOULDER (CRUSHED AGGREGATE BASE COURSE GRADATION 3)

[A] = TYPE 'A' CONCRETE CURB & GUTTER

[D] = TYPE 'D' CONCRETE CURB & GUTTER

[G] = TYPE 'G' CONCRETE CURB & GUTTER

[Pattern] = 7" CONCRETE SIDEWALK, DRIVE APRON* OR RAMP

WALDORF BLVD

BP STA 10+00.00

LEGEND

=7" CONCRETE SIDEWALK, DRIVE APRON* OR RAMP

MARK	REVISION	DATE	BY
Designed By: ID	Date: 9/11/2025 2:04 PM	Scale: 1:30	
13277			P-2

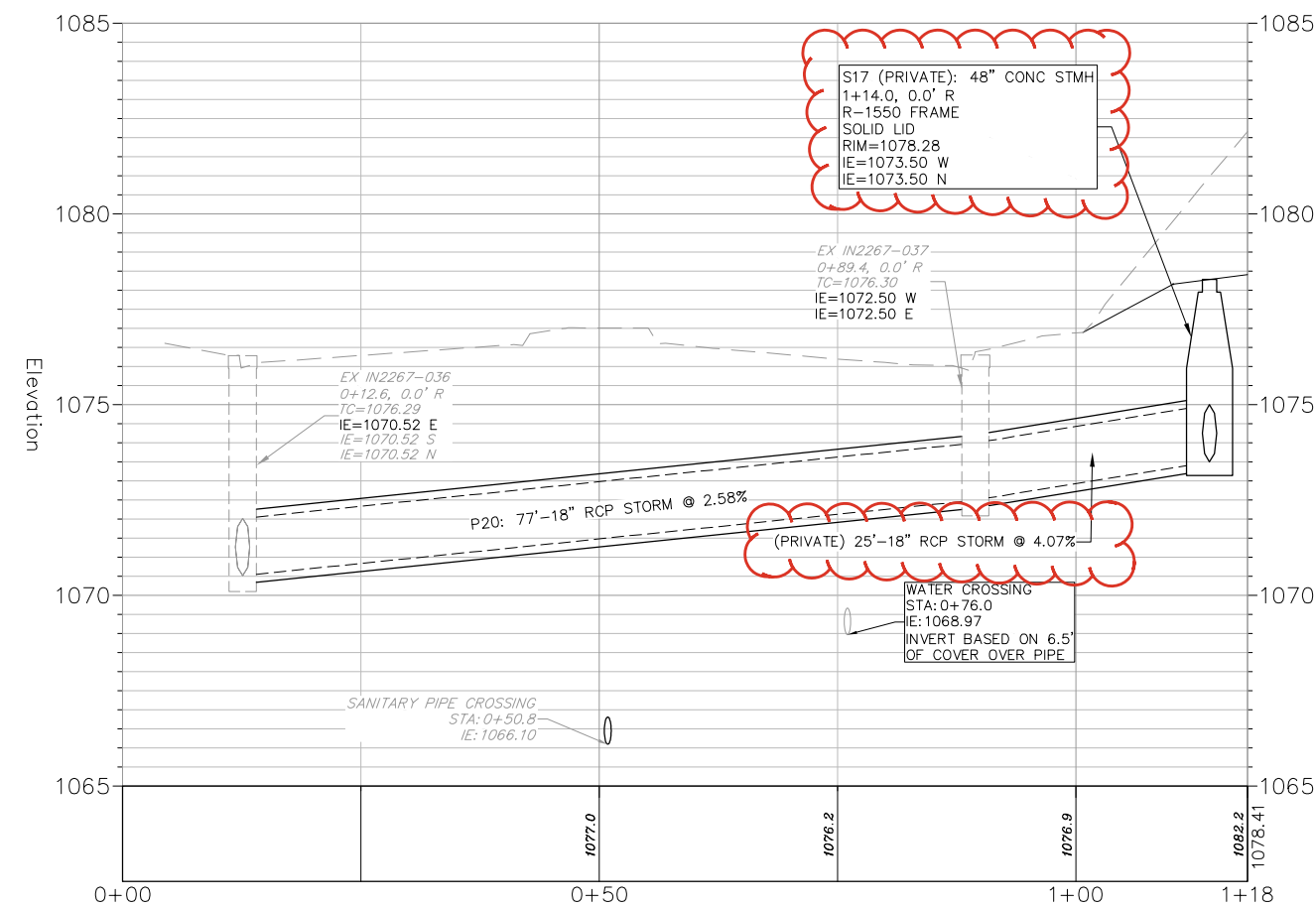
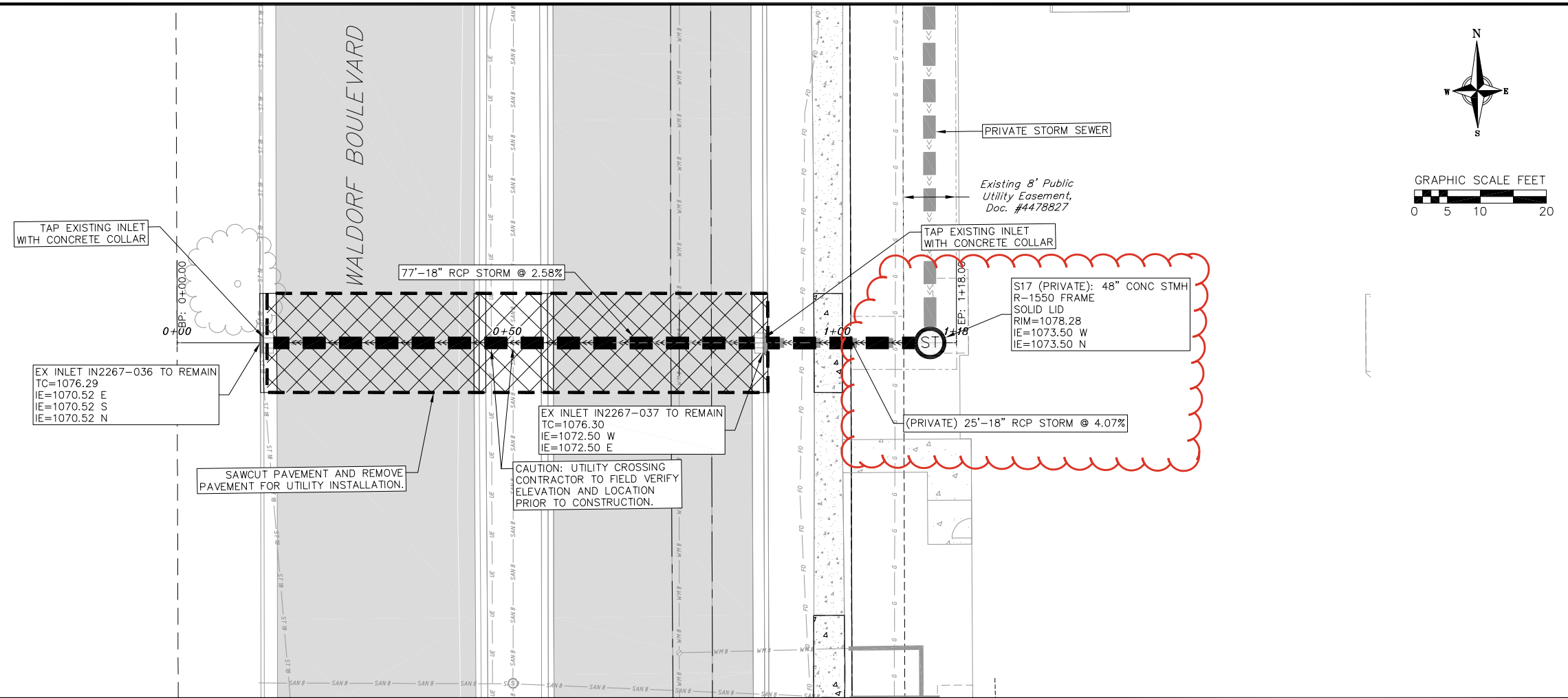
STREET PLAN & PROFILE - WALDORF BLVD	13277
8110 MIDTOWN ROAD	MADISON, WI
M:\DESIGN\Projects\13277\CAD\Streets\13277EN-PnP.dwg	CONTRACT NO: 8983



13277

P-2

REV#1 - By Developer



ABBREVIATIONS

STMH - STORM MANHOLE
FI - FIELD INLET
CI - CURB INLET
CB - CATCH BASIN
EW - ENDWALL
SMH - SANITARY MANHOLE

NOTES:

1. SEE SHEET D-1 FOR GENERAL NOTES AND LEGENDS.
2. REMOVE AND REPLACE EXISTING CURB & GUTTER AND SIDEWALK AT THE NEAREST JOINT AND MATCH EXISTING GRADES.
3. REPLACE PAVEMENT IN ACCORDANCE WITH THE CITY OF MADISON PAVEMENT PATCHING CRITERIA AND S.D.D. 4.02.
4. UTILITY LOCATES SHALL BE DONE PRIOR TO APPROVAL OF ANY PRECAST SUBMITTALS. SUBMIT STORM SHOP DRAWINGS TO JSCHMIDT@CITYOFMADISON.COM
5. DEVELOPER MUST SUBMIT A TRAFFIC CONTROL PLAN TO CITY TRAFFIC ENGINEERING AT LEAST 14 DAYS PRIOR TO THE START OF WORK. WORK SHALL NOT PROCEED UNTIL AN APPROVED TRAFFIC CONTROL PLAN IS IN PLACE.



THE LOCATION OF ALL EXISTING UTILITIES, BOTH UNDERGROUND AND OVERHEAD ARE APPROXIMATE ONLY AND HAVE NOT BEEN INDEPENDENTLY VERIFIED BY THE OWNER OR ITS REPRESENTATIVE. THE CONTRACTOR SHALL BE RESPONSIBLE FOR DETERMINING THE EXACT LOCATION OF ALL EXISTING UTILITIES WHETHER SHOWN ON THESE PLANS OR NOT, BEFORE COMMENCING WORK, AND SHALL BE FULLY RESPONSIBLE FOR ANY AND ALL DAMAGES WHICH MIGHT BE CAUSED BY THE CONTRACTOR'S FAILURE TO EXACTLY LOCATE AND PRESERVE ANY AND ALL UTILITIES.

CALL DIGGER'S HOTLINE
1-800-242-8511

CITY PROJECT NO. 13277
CONTRACT NO. 8983

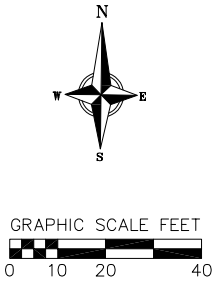
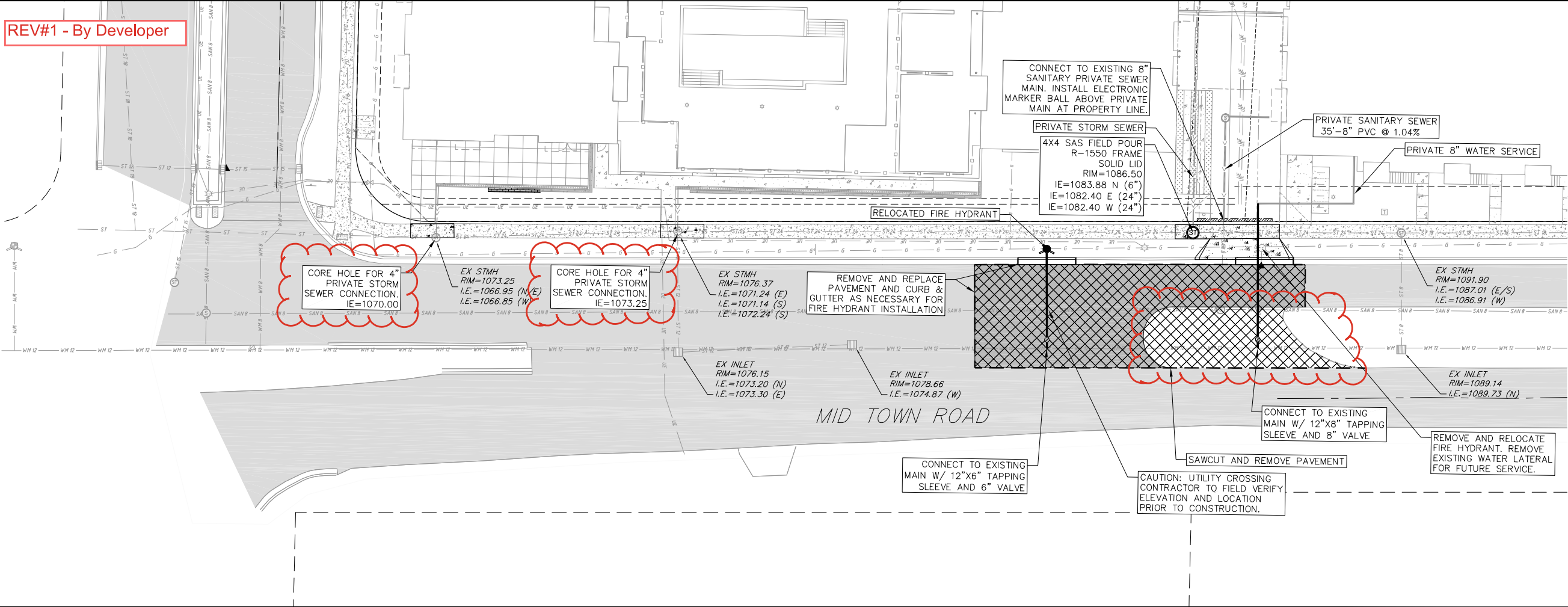
Midtown Center - Aster Flats

City of Madison

Dane County, Wisconsin

	DATE		06/30/2025	
	DRAFTER		NJOH	
	CHECKED		JZAM	
	PROJECT NO.		210317	
			U-1	
REVISIONS		REVISIONS		
NO.	DATE	NO.	DATE	

REV#1 - By Developer



ABBREVIATIONS	
STMH	STORM MANHOLE
FI	FIELD INLET
CI	CURB INLET
CB	CATCH BASIN
EW	ENDWALL
SMH	SANITARY MANHOLE

- NOTES:
- SEE SHEET D-1 FOR GENERAL NOTES AND LEGENDS.
 - REMOVE AND REPLACE EXISTING CURB & GUTTER AND SIDEWALK AT THE NEAREST JOINT AND MATCH EXISTING GRADES.
 - REPLACE PAVEMENT IN ACCORDANCE WITH THE CITY OF MADISON PAVEMENT PATCHING CRITERIA AND S.D.D. 4.02.
 - CONCRETE PAVEMENT TO BE 7" THICK AT DRIVEWAY ENTRANCE.
 - DEVELOPER MUST SUBMIT A TRAFFIC CONTROL PLAN TO CITY TRAFFIC ENGINEERING AT LEAST 14 DAYS PRIOR TO THE START OF WORK. WORK SHALL NOT PROCEED UNTIL AN APPROVED TRAFFIC CONTROL PLAN IS IN PLACE.



THE LOCATION OF EXISTING UTILITIES, BOTH UNDERGROUND AND OVERHEAD ARE APPROXIMATE ONLY AND HAVE NOT BEEN INDEPENDENTLY VERIFIED BY THE OWNER OR ITS REPRESENTATIVE. THE CONTRACTOR SHALL BE RESPONSIBLE FOR DETERMINING THE EXACT LOCATION OF ALL EXISTING UTILITIES WHETHER SHOWN ON THESE PLANS OR NOT, BEFORE COMMENCING WORK, AND SHALL BE FULLY RESPONSIBLE FOR ANY AND ALL DAMAGES WHICH MIGHT BE CAUSED BY THE CONTRACTOR'S FAILURE TO EXACTLY LOCATE AND PRESERVE ANY AND ALL UTILITIES.

CALL DIGGER'S HOTLINE
1-800-242-8511

CITY PROJECT NO. 13277
CONTRACT NO. 8983

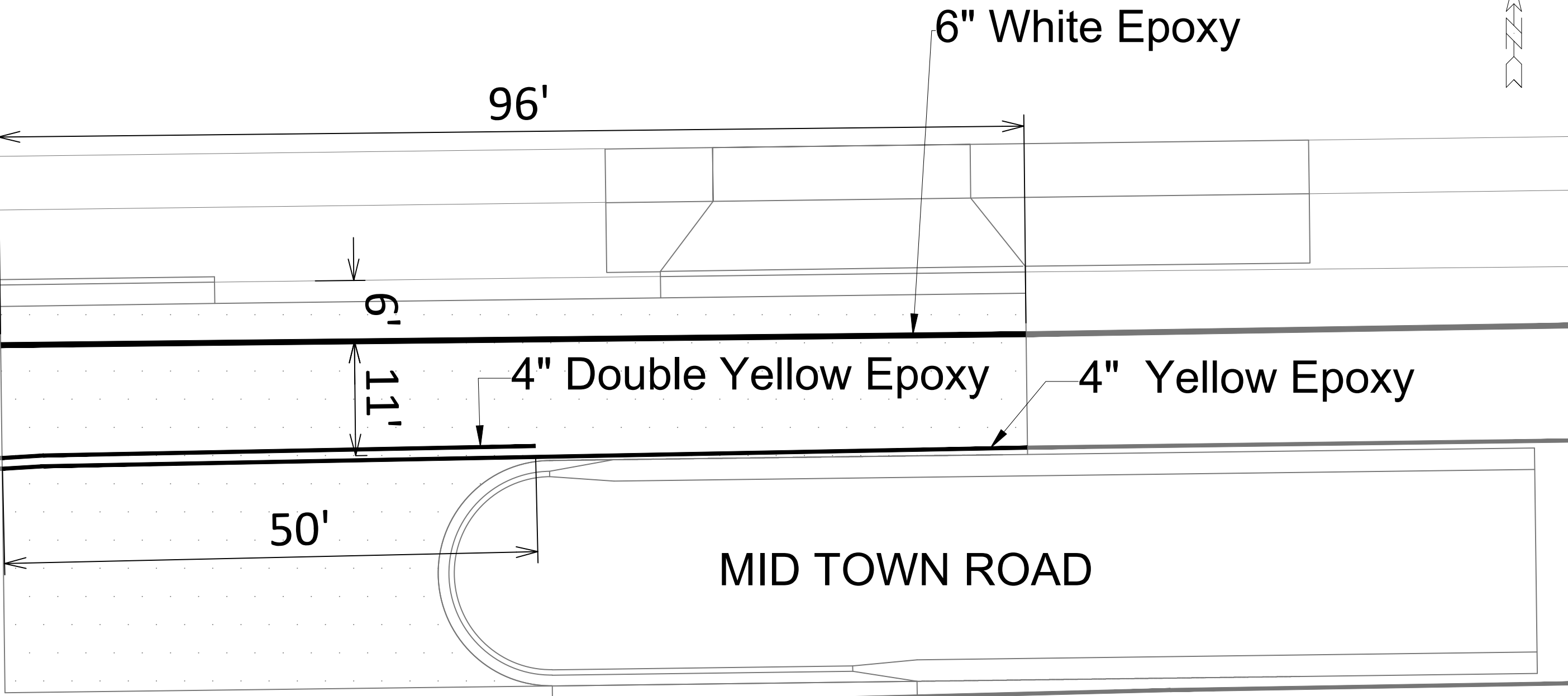
Mid Town Road Utility Plan
Midtown Center - Aster Flats
City of Madison
Dane County, Wisconsin

REVISIONS		REVISIONS	
NO.	DATE	NO.	DATE

DATE	06/30/2025
DRAFTER	NJOH
CHECKED	JZAM
PROJECT NO.	210317

U-2

REV#1 - SM
New sheet added.



MARK	REVISION	DATE	BY
13277	6/20/2024 3:32 PM	1:10	PM-1

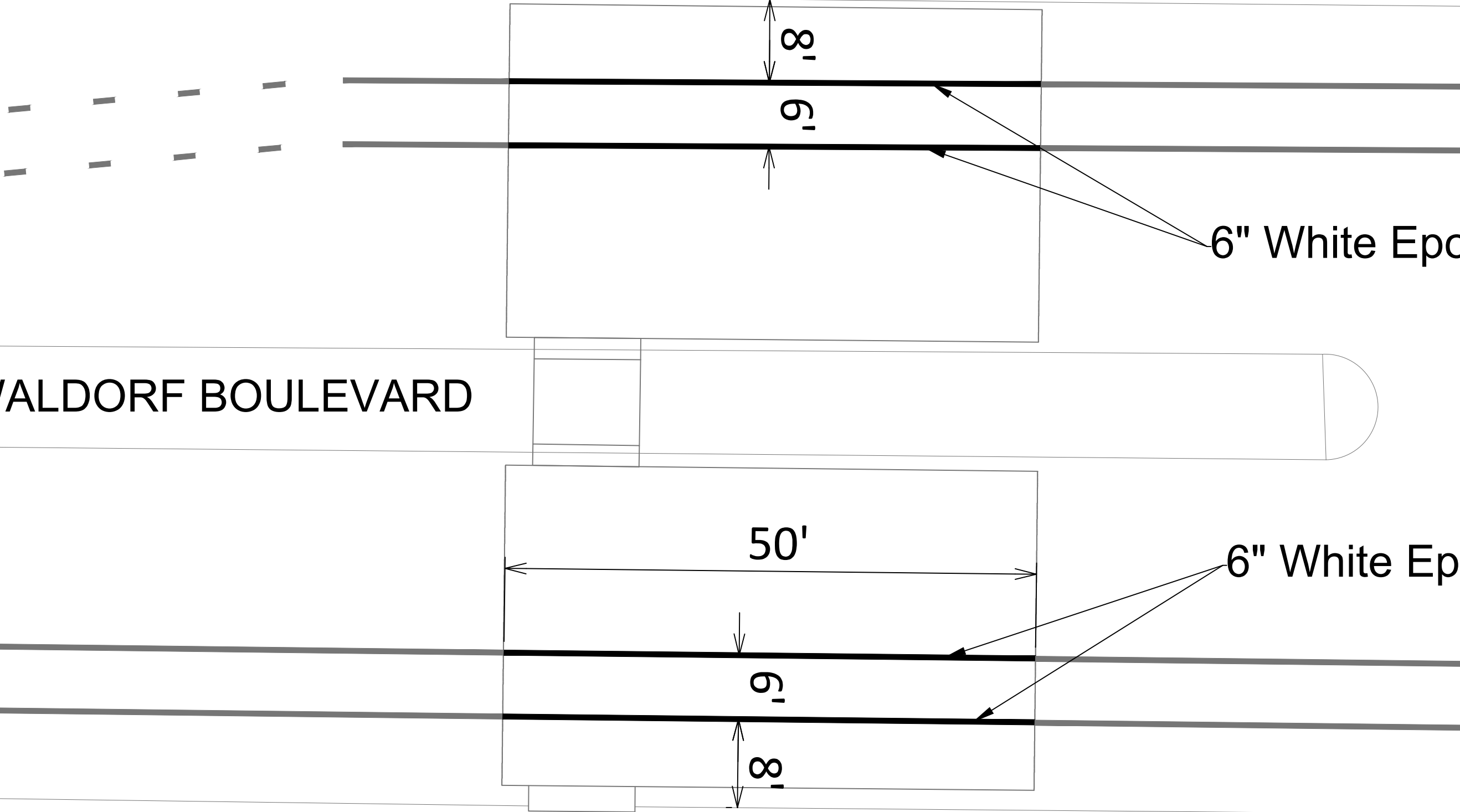
PAVEMENT MARKING PLAN	13277
8110 MID TOWN ROAD	MADISON, WI
M:\DESIGN\Traffic\Maps\SM-Plans\Sign-Mark Basemap.dwg	CONTRACT NO: ----



13277
PM-1

REV#1 - SM
New sheet added.

WALDORF BOULEVARD



MARK	REVISION	DATE	BY
13277	8/12/2025	11:47 AM	Scale: 1:10

PAVEMENT MARKING PLAN	13277
8110 MID TOWN ROAD	MADISON, WI
M:\DESIGN\Projects\13277\CAD\Traffic\13277TE-PavementMarking.dwg	CONTRACT NO: ----



13277
PM-2

REV#1 - IO
New sheet added.

