



Madison, Wisconsin

CITY OF MADISON

CITY ENGINEERING DIVISION

DEPARTMENT OF PUBLIC WORKS

PLAN OF PROPOSED IMPROVEMENT

PUBLIC IMPROVEMENT PROJECT
APPROVED

NOVEMBER 2, 2021

BY THE COMMON COUNCIL
OF MADISON, WISCONSIN

PUBLIC IMPROVEMENT DESIGN
APPROVED BY:

Chris Petykowiak

May 13, 2022

City Engineer

Date

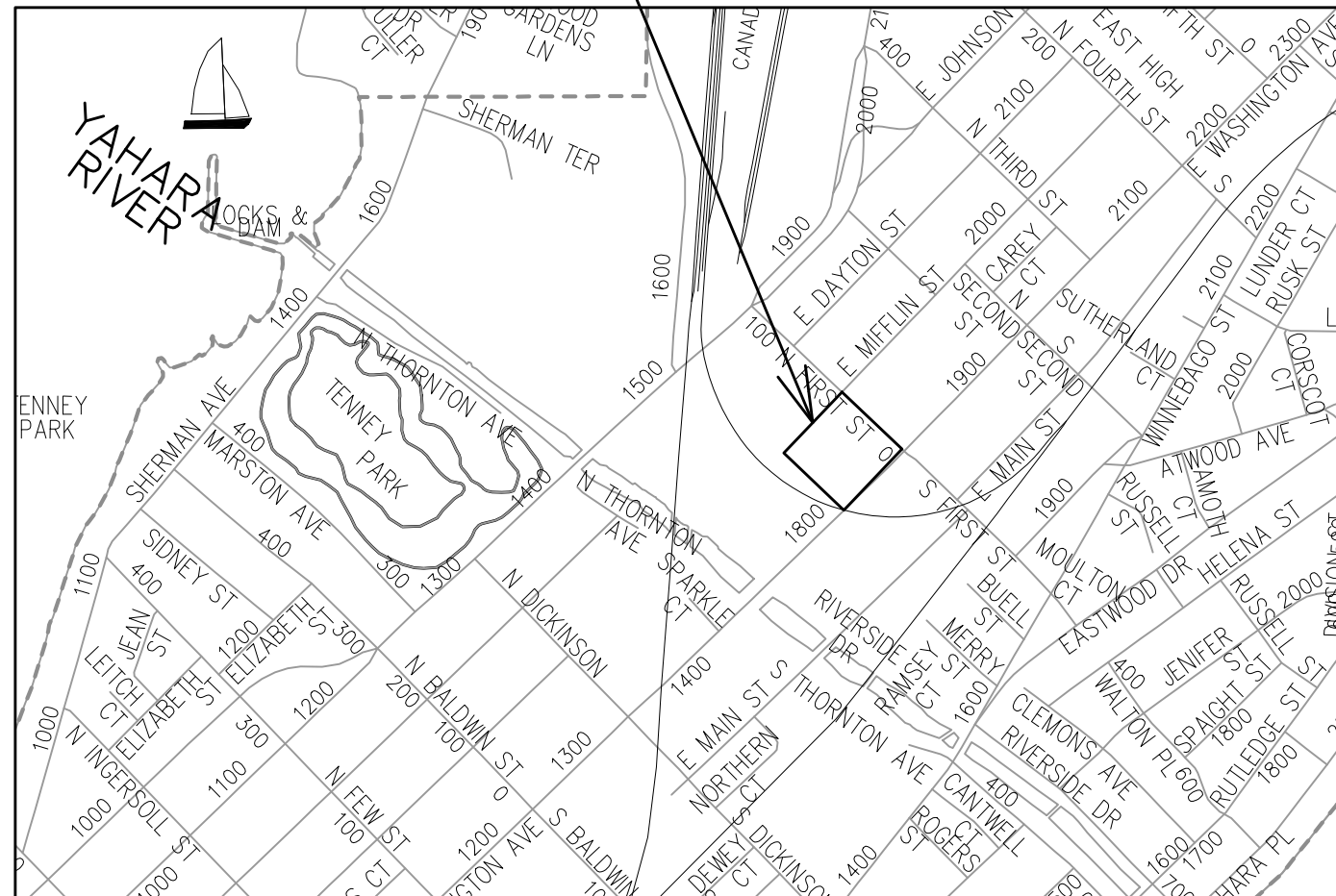
INDEX OF SHEETS

SHEET NO. D1	STANDARD NOTES & COMMENTS
SHEET NO. U1	UTILITIES PLAN
NO MAINTENANCE PLAN REQUIRED	

1874 EAST WASHINGTON AVE - UTILITIES ONLY

CITY PROJECT NO. 13771
CONTRACT NO. 9073

PROJECT LOCATION



LATERALS
ONLY

STORM SEWER
DESIGNED BY:

LATERALS
ONLY

WATER
DESIGNED BY:

LATERALS
ONLY

PLOT SCALE: 1:1_XREF

PLOT NAME: ---

REV. DATE: 5/9/2022 12:24 PM

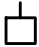
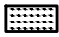

ORIGINATOR: CITY_OF_MADISON

ALL PROPOSED STREET TREE REMOVALS WITHIN THE RIGHT OF WAY SHALL BE REVIEWED BY CITY FORESTRY BEFORE THE PLAN COMMISSION MEETING. STREET TREE REMOVALS REQUIRE APPROVAL AND A TREE REMOVAL PERMIT ISSUED BY CITY FORESTRY. ANY STREET TREE REMOVALS REQUESTED AFTER THE DEVELOPMENT PLAN IS APPROVED BY THE PLAN COMMISSION OR THE BOARD OF PUBLIC WORKS AND CITY FORESTRY WILL REQUIRE A MINIMUM OF A 72-HOUR REVIEW PERIOD WHICH SHALL INCLUDE THE NOTIFICATION OF THE ALDERPERSON WITHIN WHO'S DISTRICT IS AFFECTED BY THE STREET TREE REMOVAL(S) PRIOR TO A TREE REMOVAL PERMIT BEING ISSUED.

AS DEFINED BY THE SECTION 107.13 OF CITY OF MADISON STANDARD SPECIFICATIONS FOR PUBLIC WORKS CONSTRUCTION: NO EXCAVATION IS PERMITTED WITHIN 5 FEET OF THE TRUNK OF THE STREET TREE OR WHEN CUTTING ROOTS OVER 3 INCHES IN DIAMETER. IF EXCAVATION IS NECESSARY, THE CONTRACTOR SHALL CONTACT MADISON CITY FORESTRY (266-4816) PRIOR TO EXCAVATION. CITY OF MADISON FORESTRY PERSONNEL SHALL ASSESS THE IMPACT TO THE TREE AND TO ITS ROOT SYSTEM PRIOR TO WORK COMMENCING. TREE PROTECTION SPECIFICATIONS CAN BE FOUND ON THE FOLLOWING WEBSITE: [HTTPS://WWW.CITYOFMADISON.COM/BUSINESS/PW/SPECS.CFM](https://www.cityofmadison.com/business/pw/specs.cfm)

DEVELOPER MUST SUBMIT A TRAFFIC CONTROL PLAN TO CITY TRAFFIC ENGINEERING AT LEAST 14 DAYS PRIOR TO THE START OF WORK. WORK SHALL NOT PROCEED UNTIL AN APPROVED TRAFFIC CONTROL PLAN IS IN PLACE.

CONTACT PROJECT ENGINEER AND STREET DESIGNER IKE OKAFOR AT IOKAFOR@CITYOFMADISON.COM FOR CAD AND ALIGNMENT DATA PRIOR TO STAKING.

CONVENTIONAL SIGNS	
<i>FIELD VERIFY ALL UTILITY LOCATIONS</i>	
GAS	—— G ——
STORM SEWER	—— ST ——
SANITARY SEWER	—— SN ——
WATER	—— W ——
BURIED ELECTRIC	—— E ——
OVERHEAD ELECTRIC	—— OH ——
POWER POLE	
ADA COMPLIANT RAMP W/ DETECTABLE WARNING FIELD	
COMBUSTIBLE FLUIDS	

UNDERDRAINS SHALL BE INSTALLED PER STANDARD DETAIL DRAWING 4.05 FOR 75' ON EACH SIDE OF THE LOW POINT, OR TO THE NEAREST CURB HIGH POINT. ALL UNDERDRAIN SHALL BE WRAPPED.

ALL GUTTERS SHALL DRAIN WITH A MINIMUM GRADE OF 0.5% TOWARD STORM SEWER INLETS.

ALL DITCHES SHALL DRAIN WITH A MINIMUM GRADE OF 0.5%

THE CROSS SLOPE OF SIDEWALKS AND BARRIER FREE SIDEWALK CURB RAMPS SHALL TYPICALLY BE 1.5%. THE LONGITUDINAL GRADE OF BARRIER FREE SIDEWALK CURB RAMPS SHALL NOT EXCEED 8.33%. ALL SIDEWALK RAMPS SHALL BE CONSTRUCTED ACCORDING TO S.D.D. 3.04. AT ALL OTHER LOCATIONS THE LONGITUDINAL GRADE OF SIDEWALKS SHALL NOT BE LESS THAN 0.5% AND SHALL DRAIN TOWARD STORM SEWER INLETS. ALL SIDEWALK AND SIDEWALK RAMP ELEVATIONS AND GRADES SHALL BE FIELD VERIFIED AND SET TO COMPLY WITH THE CITY OF MADISON STANDARD SPECIFICATIONS AND THE A.D.A. GUIDELINES.

CURB STATION AND OFFSETS SHALL BE TO THE EDGE OF PAVEMENT UNLESS OTHERWISE INDICATED. CURB ELEVATIONS SHALL BE TO THE EDGE OF PAVEMENT UNLESS OTHERWISE INDICATED.

POWER POLES AND OTHER OBSTRUCTIONS SHALL BE MOVED TO PROVIDE 2 FEET MINIMUM OF CLEAR DISTANCE FROM ANY FACE OF CURB OR EDGE OF SIDEWALK.

ANY INFORMATION SHOWN ON THIS PLAN, WHICH IS NOT PART OF THIS RIGHT-OF-WAY PROJECT, IS PRELIMINARY AND NOT FOR CONSTRUCTION.

THERE MAY BE EXISTING UTILITIES OR OTHER FEATURES WHICH ARE EITHER NOT SHOWN OR SHOWN INCORRECTLY ON THIS PLAN. IT IS THE RESPONSIBILITY OF THE DEVELOPER TO LOCATE AND IDENTIFY ALL UTILITIES AND TOPOGRAPHY WHICH MAY AFFECT THE CONSTRUCTION OF THESE IMPROVEMENTS.

ALL PERMANENT SIGNING AND POSTING WILL BE DETERMINED AND PROVIDED BY THE TRAFFIC ENGINEERING DIVISION, FOLLOWING CONSTRUCTION OF THESE IMPROVEMENTS.

THE DEVELOPER SHALL PROVIDE, INSTALL AND MAINTAIN ALL STREET END BARRICADES, SIGNING AND TRAFFIC CONTROL, AS REQUIRED BY THE CITY TRAFFIC ENGINEER.

PAVEMENT SAWCUTS SHALL BE AS DIRECTED BY THE CITY CONSTRUCTION ENGINEER. SAWCUTS SHOWN ON THE PLAN ARE APPROXIMATE.

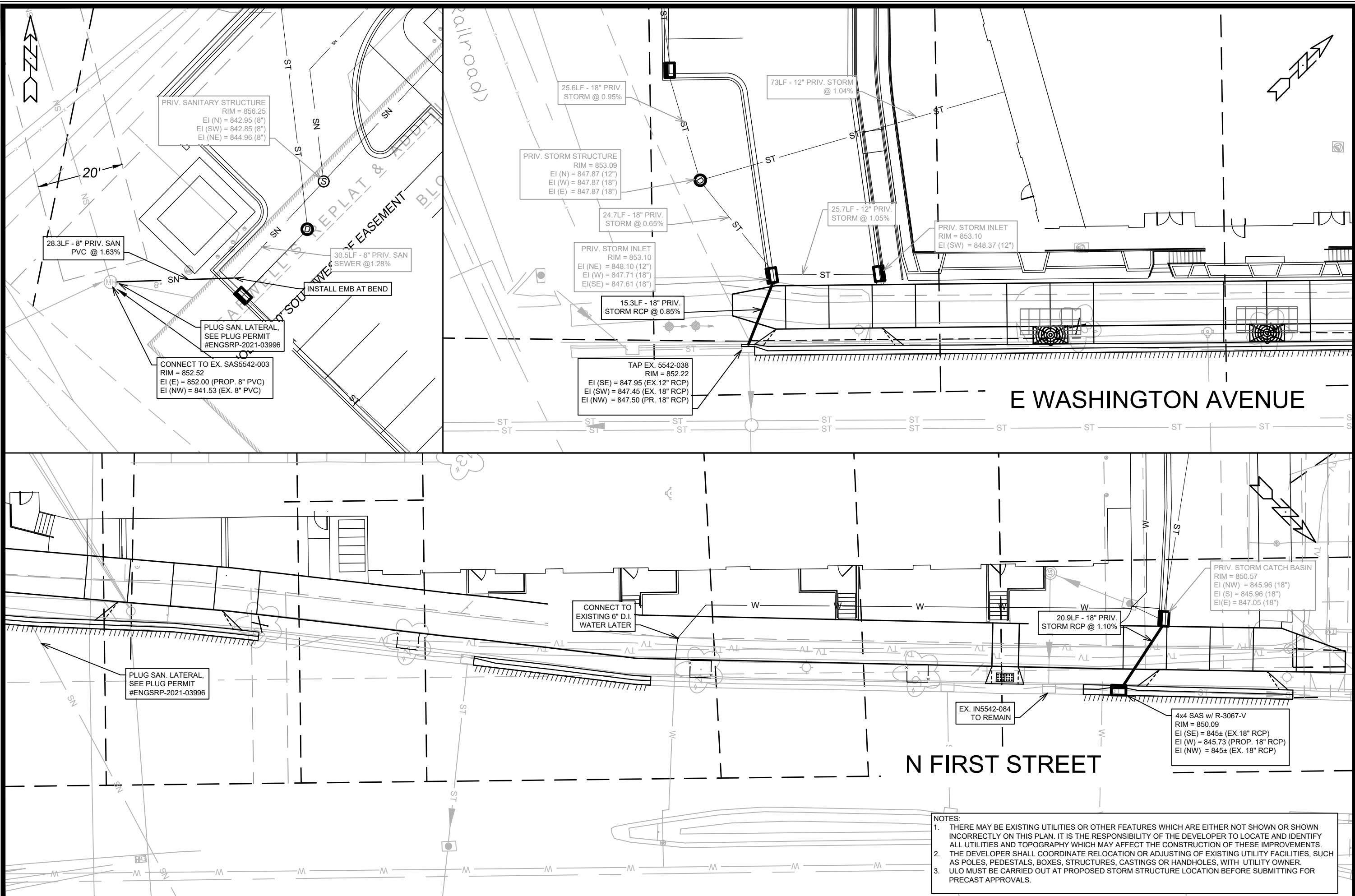
ALL WORK IN THE RIGHT OF WAY AND PUBLIC EASEMENTS SHALL BE IN ACCORDANCE WITH THE CITY OF MADISON STANDARD SPECIFICATIONS FOR PUBLIC WORKS CONSTRUCTION

DATE	BY
REVISION	
Date: 05/20/2022 12:28 PM	Scale: 1:5
MARK	13771
Designed By: IO	

13771
MADISON, WI
9073
CONTRACT NO:

STANDARD NOTES & COMMENTS
1874 E WASHINGTON AVENUE
M:\DESIGN\Projects\13771\CAD\Streets\13771EN-Details.dwg





PRIV. SANITARY STRUCTURE
RIM = 856.25
EI (N) = 842.95 (8")
EI (SW) = 842.85 (8")
EI (NE) = 844.96 (8")

28.3LF - 8" PRIV. SAN
PVC @ 1.63%

PLUG SAN. LATERAL,
SEE PLUG PERMIT
#ENGRP-2021-03996

CONNECT TO EX. SAS5542-003
RIM = 852.52
EI (E) = 852.00 (PROP. 8" PVC)
EI (NW) = 841.53 (EX. 8" PVC)

30.5LF - 8" PRIV. SAN
SEWER @ 1.28%

INSTALL EMB AT BEND

PRIV. STORM STRUCTURE
RIM = 853.09
EI (N) = 847.87 (12")
EI (W) = 847.87 (18")
EI (E) = 847.87 (18")

24.7LF - 18" PRIV.
STORM @ 0.65%

PRIV. STORM INLET
RIM = 853.10
EI (NE) = 848.10 (12")
EI (W) = 847.71 (18")
EI (SE) = 847.61 (18")

15.3LF - 18" PRIV.
STORM RCP @ 0.85%

TAP EX. 5542-038
RIM = 852.22
EI (SE) = 847.95 (EX. 12" RCP)
EI (SW) = 847.45 (EX. 18" RCP)
EI (NW) = 847.50 (PR. 18" RCP)

73LF - 12" PRIV. STORM
@ 1.04%

25.7LF - 12" PRIV.
STORM @ 1.05%

PRIV. STORM INLET
RIM = 853.10
EI (SW) = 848.37 (12")

CONNECT TO
EXISTING 6" D.I.
WATER LATER

20.9LF - 18" PRIV.
STORM RCP @ 1.10%

PRIV. STORM CATCH BASIN
RIM = 850.57
EI (NW) = 845.96 (18")
EI (S) = 845.96 (18")
EI (E) = 847.05 (18")

PLUG SAN. LATERAL,
SEE PLUG PERMIT
#ENGRP-2021-03996

EX. IN5542-084
TO REMAIN

4x4 SAS w/ R-3067-V
RIM = 850.09
EI (SE) = 845± (EX. 18" RCP)
EI (W) = 845.73 (PROP. 18" RCP)
EI (NW) = 845± (EX. 18" RCP)

- NOTES:
1. THERE MAY BE EXISTING UTILITIES OR OTHER FEATURES WHICH ARE EITHER NOT SHOWN OR SHOWN INCORRECTLY ON THIS PLAN. IT IS THE RESPONSIBILITY OF THE DEVELOPER TO LOCATE AND IDENTIFY ALL UTILITIES AND TOPOGRAPHY WHICH MAY AFFECT THE CONSTRUCTION OF THESE IMPROVEMENTS.
 2. THE DEVELOPER SHALL COORDINATE RELOCATION OR ADJUSTING OF EXISTING UTILITY FACILITIES, SUCH AS POLES, PEDESTALS, BOXES, STRUCTURES, CASTINGS OR HANDHOLES, WITH UTILITY OWNER.
 3. ULO MUST BE CARRIED OUT AT PROPOSED STORM STRUCTURE LOCATION BEFORE SUBMITTING FOR PRECAST APPROVALS.

MARK	REVISION	DATE	BY

Designed By: ID 13771
Date: 5/13/2022 7:08 AM
Scale: 1/20
U-1

13771
MADISON, WI
CONTRACT NO: 9073

UTILITIES PLAN
1874 E WASHINGTON AVENUE
M:\DESIGN\Projects\13771\CAD\Streets\13771EN-UtilitiesPlan.dwg

13771
U-1