

Madison, Wisconsin

CITY OF MADISON

CITY ENGINEERING DIVISION

DEPARTMENT OF PUBLIC WORKS

PLAN OF PROPOSED IMPROVEMENT

PUBLIC IMPROVEMENT PROJECT APPROVED

SEPTEMBER 21, 2021

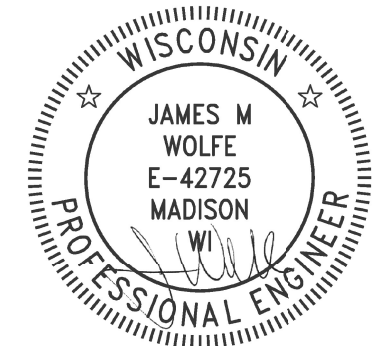
BY THE COMMON COUNCIL OF MADISON, WISCONSIN

PUBLIC IMPROVEMENT DESIGN APPROVED BY:

Greg Fries May 11, 2022

City Engineer Date

STREET DESIGNED BY:



May 11, 2022

INDEX OF SHEETS

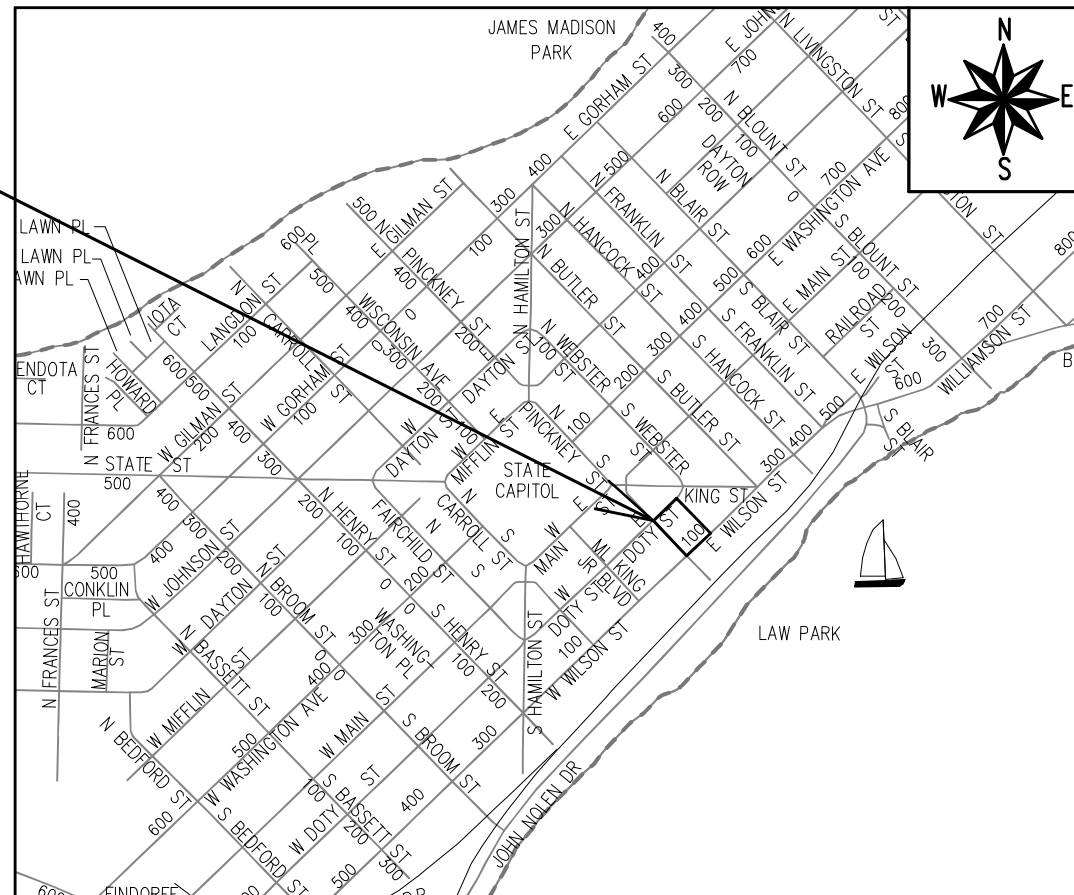
SHEET NO.	D1	STANDARD NOTES & COMMENTS
SHEET NO.	D2	TYPICAL SECTIONS
SHEET NO.	D3	TREE GRATE & PLANTER DETAIL
SHEET NO.	E1	ELECTRICAL PLAN
SHEET NO.	P1-P3	STREET PLAN & PROFILES
SHEET NO.	U1	SANITARY SEWER & WATER PLAN
SHEET NO.	U2	STORM SEWER PLANS
SHEET NO.	L1	LANDSCAPE PLAN
SHEET NO.	X1-X8	CROSS SECTIONS

NO MAINTENANCE PLAN REQUIRED

231 S PINCKNEY STREET - BLOCK 105

CITY PROJECT NO. 13804
CONTRACT NO. 9077

PROJECT LOCATION



REVISION HISTORY

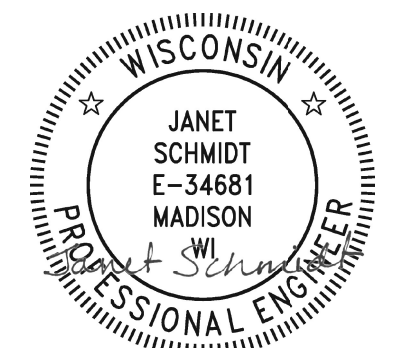
- Revision #1 - IO - 06/08/22
- Revision #2 - IO - 10/19/22
- Revision #3 - IO - 05/09/23
- Revision #4 - IO - 11/15/23
- Revision #5 - IO - 03/18/24

ELECTRICAL DESIGNED BY:



May 11, 2022

STORM SEWER DESIGNED BY:



May 11, 2022

SANITARY SEWER DESIGNED BY:

LATERAL ONLY

WATER DESIGNED BY:

LATERAL ONLY

PLOT SCALE: 1:1_XREF

PLOT NAME: ---

REV. DATE: 5/10/2022 8:23 AM

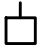


ORIGINATOR: CITY_OF_MADISON

ALL PROPOSED STREET TREE REMOVALS WITHIN THE RIGHT OF WAY SHALL BE REVIEWED BY CITY FORESTRY BEFORE THE PLAN COMMISSION MEETING. STREET TREE REMOVALS REQUIRE APPROVAL AND A TREE REMOVAL PERMIT ISSUED BY CITY FORESTRY. ANY STREET TREE REMOVALS REQUESTED AFTER THE DEVELOPMENT PLAN IS APPROVED BY THE PLAN COMMISSION OR THE BOARD OF PUBLIC WORKS AND CITY FORESTRY WILL REQUIRE A MINIMUM OF A 72-HOUR REVIEW PERIOD WHICH SHALL INCLUDE THE NOTIFICATION OF THE ALDERPERSON WITHIN WHO'S DISTRICT IS AFFECTED BY THE STREET TREE REMOVAL(S) PRIOR TO A TREE REMOVAL PERMIT BEING ISSUED.

AS DEFINED BY THE SECTION 107.13 OF CITY OF MADISON STANDARD SPECIFICATIONS FOR PUBLIC WORKS CONSTRUCTION: NO EXCAVATION IS PERMITTED WITHIN 5 FEET OF THE TRUNK OF THE STREET TREE OR WHEN CUTTING ROOTS OVER 3 INCHES IN DIAMETER. IF EXCAVATION IS NECESSARY, THE CONTRACTOR SHALL CONTACT MADISON CITY FORESTRY (266-4816) PRIOR TO EXCAVATION. CITY OF MADISON FORESTRY PERSONNEL SHALL ASSESS THE IMPACT TO THE TREE AND TO ITS ROOT SYSTEM PRIOR TO WORK COMMENCING. TREE PROTECTION SPECIFICATIONS CAN BE FOUND ON THE FOLLOWING WEBSITE: [HTTPS://WWW.CITYOFMADISON.COM/BUSINESS/PW/SPECS.CFM](https://www.cityofmadison.com/business/pw/specs.cfm)

DEVELOPER MUST SUBMIT A TRAFFIC CONTROL PLAN TO CITY TRAFFIC ENGINEERING AT LEAST 14 DAYS PRIOR TO THE START OF WORK. WORK SHALL NOT PROCEED UNTIL AN APPROVED TRAFFIC CONTROL PLAN IS IN PLACE.

CONTACT PROJECT ENGINEER AND STREET DESIGNER IKE OKAFOR AT IOKAFOR@CITYOFMADISON.COM FOR CAD AND ALIGNMENT DATA PRIOR TO STAKING.

CONVENTIONAL SIGNS	
FIELD VERIFY ALL UTILITY LOCATIONS	
GAS	—— G ——
STORM SEWER	—— ST ——
SANITARY SEWER	—— SN ——
WATER	—— W ——
BURIED ELECTRIC	—— E ——
OVERHEAD ELECTRIC	—— OH ——
POWER POLE	
ADA COMPLIANT RAMP W/ DETECTABLE WARNING FIELD	
COMBUSTIBLE FLUIDS	

UNDERDRAINS SHALL BE INSTALLED PER STANDARD DETAIL DRAWING 4.05 FOR 75' ON EACH SIDE OF THE LOW POINT, OR TO THE NEAREST CURB HIGH POINT. ALL UNDERDRAIN SHALL BE WRAPPED.

ALL GUTTERS SHALL DRAIN WITH A MINIMUM GRADE OF 0.5% TOWARD STORM SEWER INLETS.

ALL DITCHES SHALL DRAIN WITH A MINIMUM GRADE OF 0.5%

THE CROSS SLOPE OF SIDEWALKS AND BARRIER FREE SIDEWALK CURB RAMPS SHALL TYPICALLY BE 1.5%. THE LONGITUDINAL GRADE OF BARRIER FREE SIDEWALK CURB RAMPS SHALL NOT EXCEED 8.33%. ALL SIDEWALK RAMPS SHALL BE CONSTRUCTED ACCORDING TO S.D.D. 3.04. AT ALL OTHER LOCATIONS THE LONGITUDINAL GRADE OF SIDEWALKS SHALL NOT BE LESS THAN 0.5% AND SHALL DRAIN TOWARD STORM SEWER INLETS. ALL SIDEWALK AND SIDEWALK RAMP ELEVATIONS AND GRADES SHALL BE FIELD VERIFIED AND SET TO COMPLY WITH THE CITY OF MADISON STANDARD SPECIFICATIONS AND THE A.D.A. GUIDELINES.

CURB STATION AND OFFSETS SHALL BE TO THE EDGE OF PAVEMENT UNLESS OTHERWISE INDICATED. CURB ELEVATIONS SHALL BE TO THE EDGE OF PAVEMENT UNLESS OTHERWISE INDICATED.

POWER POLES AND OTHER OBSTRUCTIONS SHALL BE MOVED TO PROVIDE 2 FEET MINIMUM OF CLEAR DISTANCE FROM ANY FACE OF CURB OR EDGE OF SIDEWALK.

ANY INFORMATION SHOWN ON THIS PLAN, WHICH IS NOT PART OF THIS RIGHT-OF-WAY PROJECT, IS PRELIMINARY AND NOT FOR CONSTRUCTION.

THERE MAY BE EXISTING UTILITIES OR OTHER FEATURES WHICH ARE EITHER NOT SHOWN OR SHOWN INCORRECTLY ON THIS PLAN. IT IS THE RESPONSIBILITY OF THE DEVELOPER TO LOCATE AND IDENTIFY ALL UTILITIES AND TOPOGRAPHY WHICH MAY AFFECT THE CONSTRUCTION OF THESE IMPROVEMENTS.

ALL PERMANENT SIGNING AND POSTING WILL BE DETERMINED AND PROVIDED BY THE TRAFFIC ENGINEERING DIVISION, FOLLOWING CONSTRUCTION OF THESE IMPROVEMENTS.

THE DEVELOPER SHALL PROVIDE, INSTALL AND MAINTAIN ALL STREET END BARRICADES, SIGNING AND TRAFFIC CONTROL, AS REQUIRED BY THE CITY TRAFFIC ENGINEER.

PAVEMENT SAWCUTS SHALL BE AS DIRECTED BY THE CITY CONSTRUCTION ENGINEER. SAWCUTS SHOWN ON THE PLAN ARE APPROXIMATE.

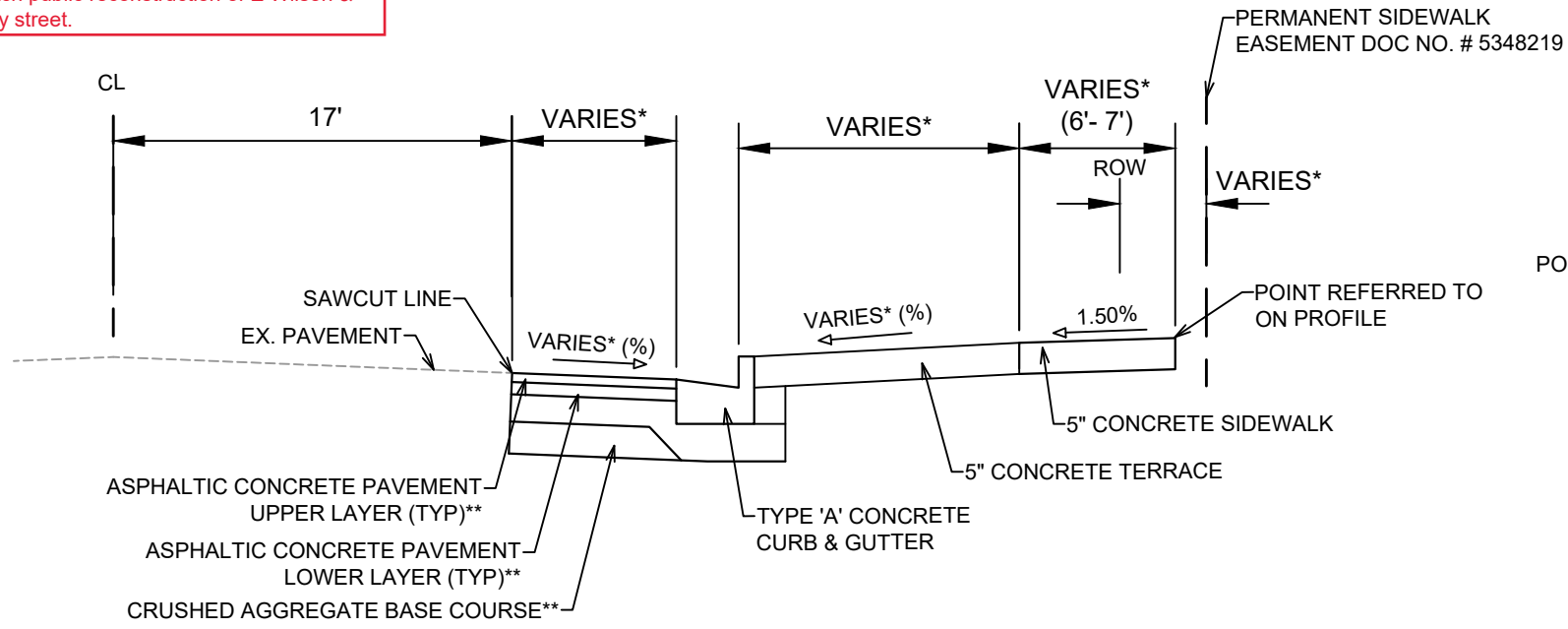
ALL WORK IN THE RIGHT OF WAY AND PUBLIC EASEMENTS SHALL BE IN ACCORDANCE WITH THE CITY OF MADISON STANDARD SPECIFICATIONS FOR PUBLIC WORKS CONSTRUCTION

DATE	BY
REVISION	
Date: 4/18/2022 1:41 PM	
Designated By: IO	
13804	
Scale: 1:5	
D-1	

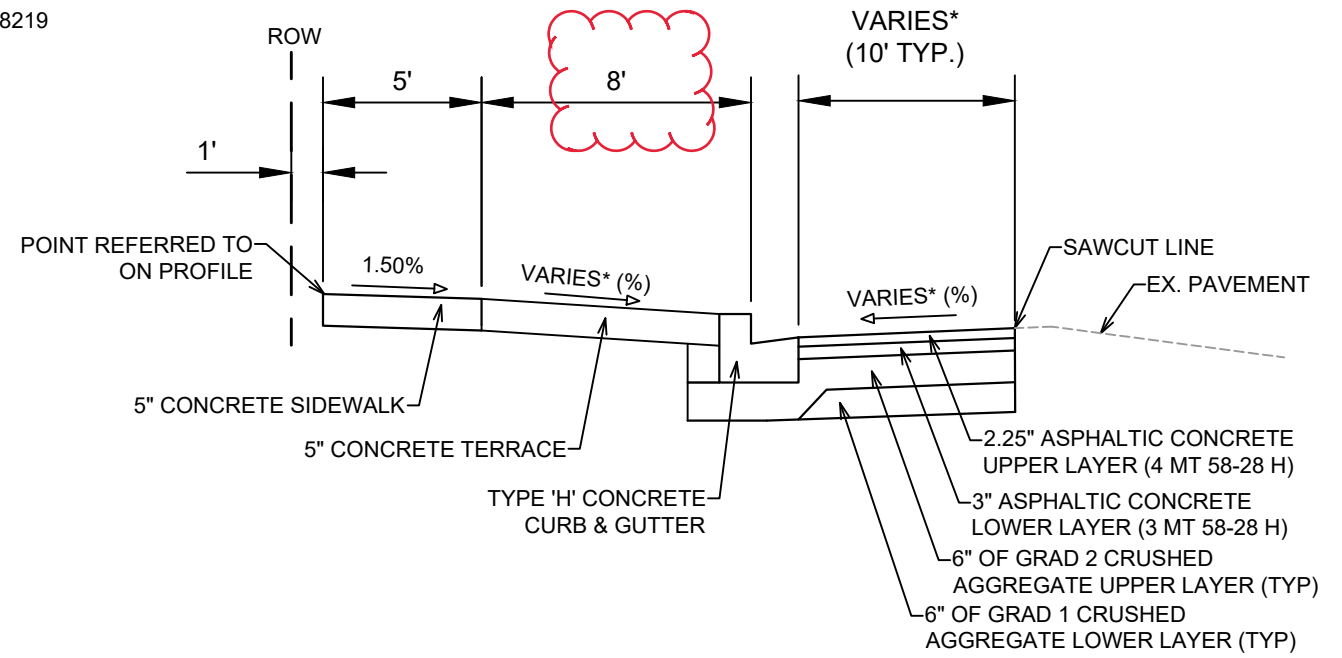
13804
MADISON, WI
9077
CONTRACT NO:
STANDARD NOTES AND COMMENTS
231 S PINCKNEY STREET - BLOCK 105
M:\DESIGN\Projects\13804\CAD\Streets\13804EN-Details.dwg



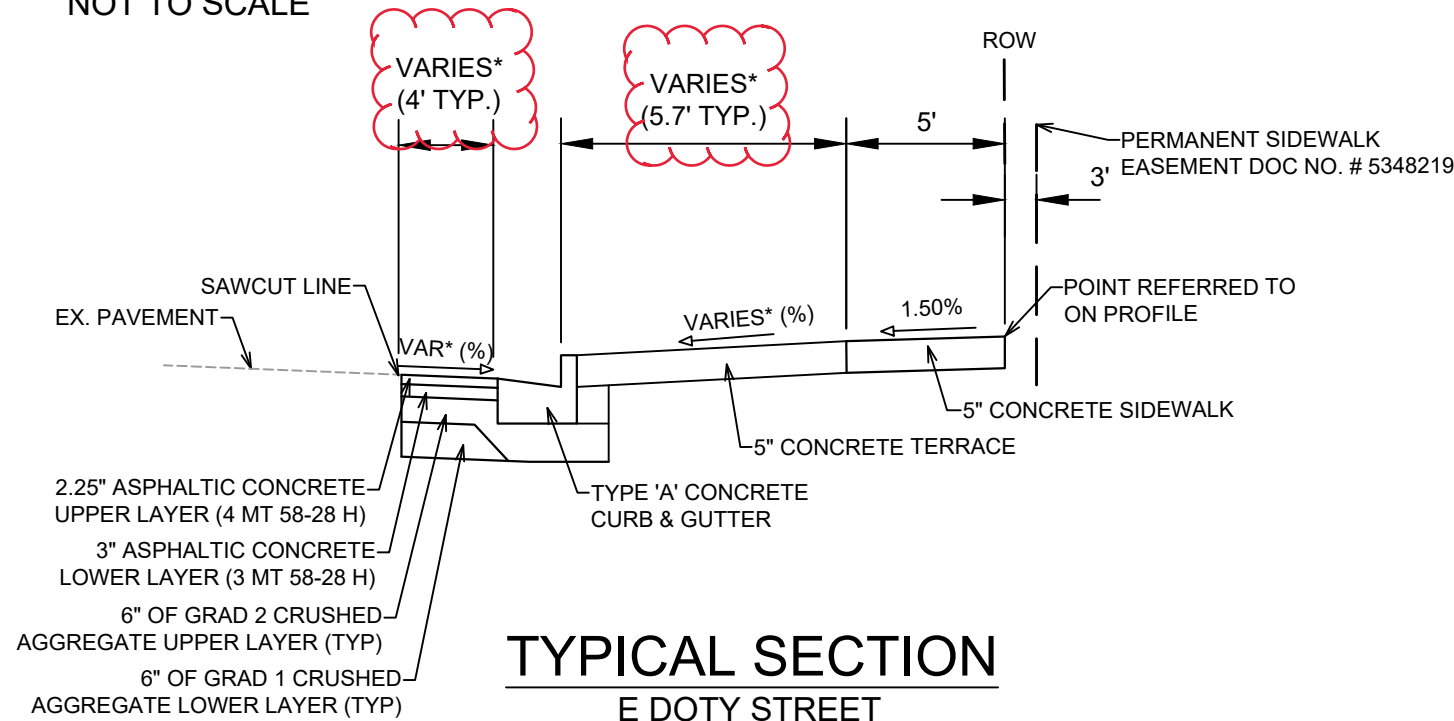
REVISION #5 - IO - 3/18/24
 - Curb, Sidewalk & Terrace redesigned to match public reconstruction of E Wilson & Doty street.



TYPICAL SECTION
 S PINCKNEY STREET
 NOT TO SCALE



TYPICAL SECTION
 E WILSON STREET
 NOT TO SCALE



TYPICAL SECTION
 E DOTY STREET
 NOT TO SCALE

NOTES:

- * SEE PLAN & CROSS SECTIONS FOR DETAILS AND DIMENSIONS
- ** S PINCKNEY STREET SHALL BE CONSTRUCTED AS TYPE 'C' PAVEMENT PER CITY OF MADISON MINIMUM PAVEMENT DESIGN †
- THE DEVELOPER SHALL BE RESPONSIBLE FOR ALL SURFACE PAVING AS PART OF THIS PROJECT

CITY OF MADISON MINIMUM PAVEMENT DESIGN †

TYPE	CRUSHED AGGREGATE BASE COURSE		ASPHALTIC CONCRETE PAVEMENT			
	LOWER LAYER GRADATION 1	UPPER LAYER GRADATION 2	LOWER LAYER		UPPER LAYER	
			TYPE	THICKNESS	TYPE	THICKNESS
A	6"	6"	4 LT 58-28 S	1.75"	4 LT 58-28 S	1.75"
B	6"	6"	3 LT 58-28 S	2.50"	4 LT 58-28 S	2.00"
C	6"	6"	3 MT 58-28 S/H	3.50"	4 MT 58-28 S/H	2.00"

DATE	BY
REVISION	SCALE
DESIGNED BY	DATE
13804	1:54 PM
13804	Custom
D-2	

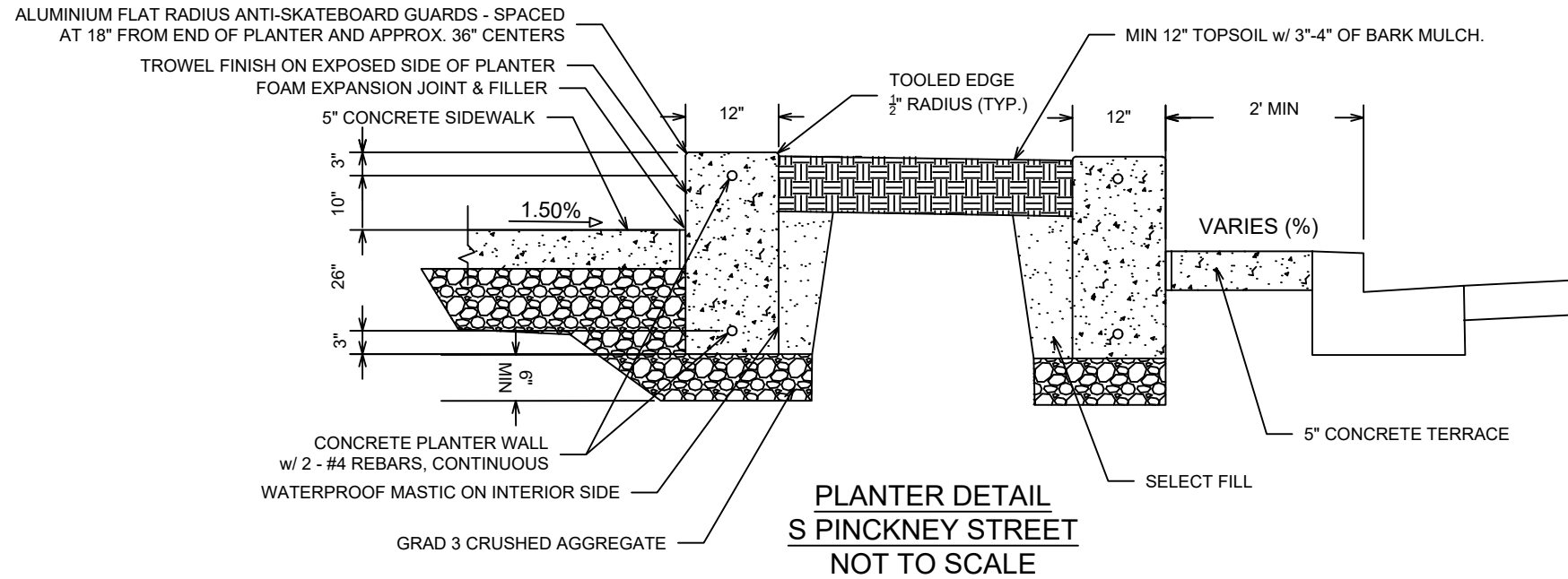
13804
 MADISON, WI
 CONTRACT NO: 9077

TYPICAL SECTIONS
 231 S PINCKNEY STREET - BLOCK 105
 M:\DESIGN\Projects\13804\CAD\Streets\13804EN-Details.dwg

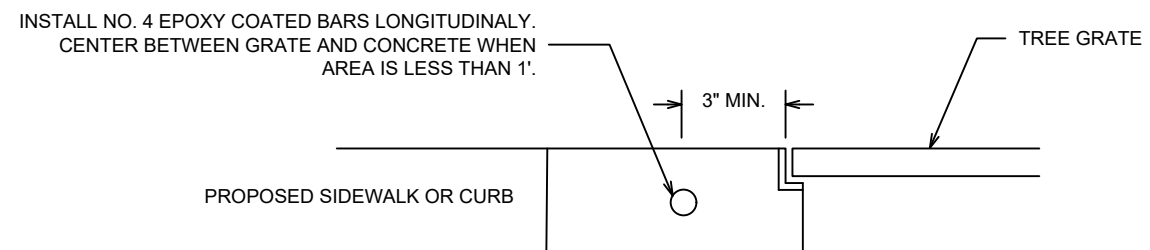
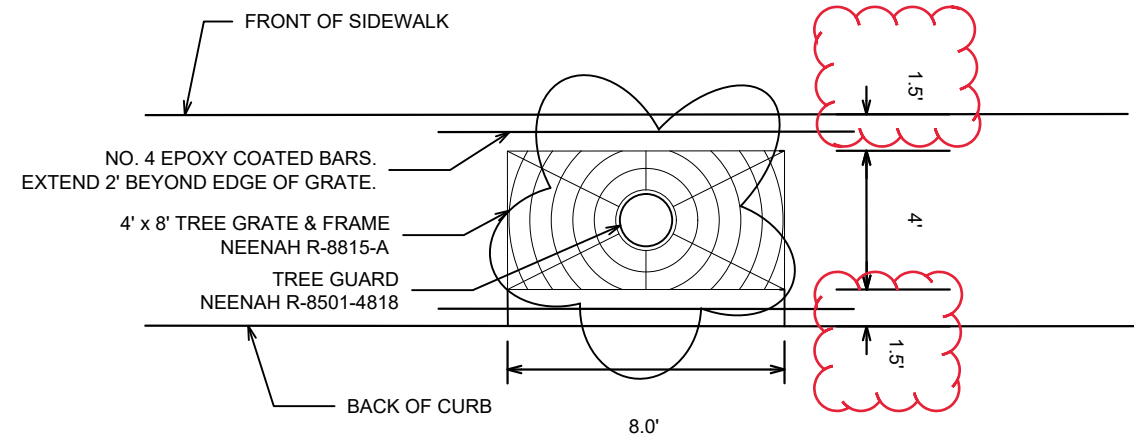


13804
 D-2

REVISION #5 - IO - 3/18/24
 - E Wilson Terrace width adjusted



**TREE GRATE INSTALLATION DETAIL
 E WILSON STREET
 (NOT TO SCALE)**



- NOTES:
1. TREE GRATE LOCATION TO BE VERIFIED WITH CONSTRUCTION ENGINEER AND FORESTRY.
 2. VERIFY JOINT PATTERN WITH CONSTRUCTION ENGINEER.
 3. REFER TO S.D.D. 2.02 FOR STANDARD PLANTING TECHNIQUE FOR TREES IN TREE GRATES
 4. THE CONTRACTOR SHALL CONTACT CITY FORESTRY AT (608) 266-4816 NO LATER THAN FIVE BUSINESS DAYS PRIOR TO FORMING CONCRETE AND CONSTRUCTING TREE GRATE SITES, TO IDENTIFY AND LOCATE UNDERGROUND CONFLICTS (UTILITIES, VAULTS,CONDUIT) OR OTHER UNDERGROUND OBSTRUCTIONS AND DETERMINE GRATE LOCATIONS.

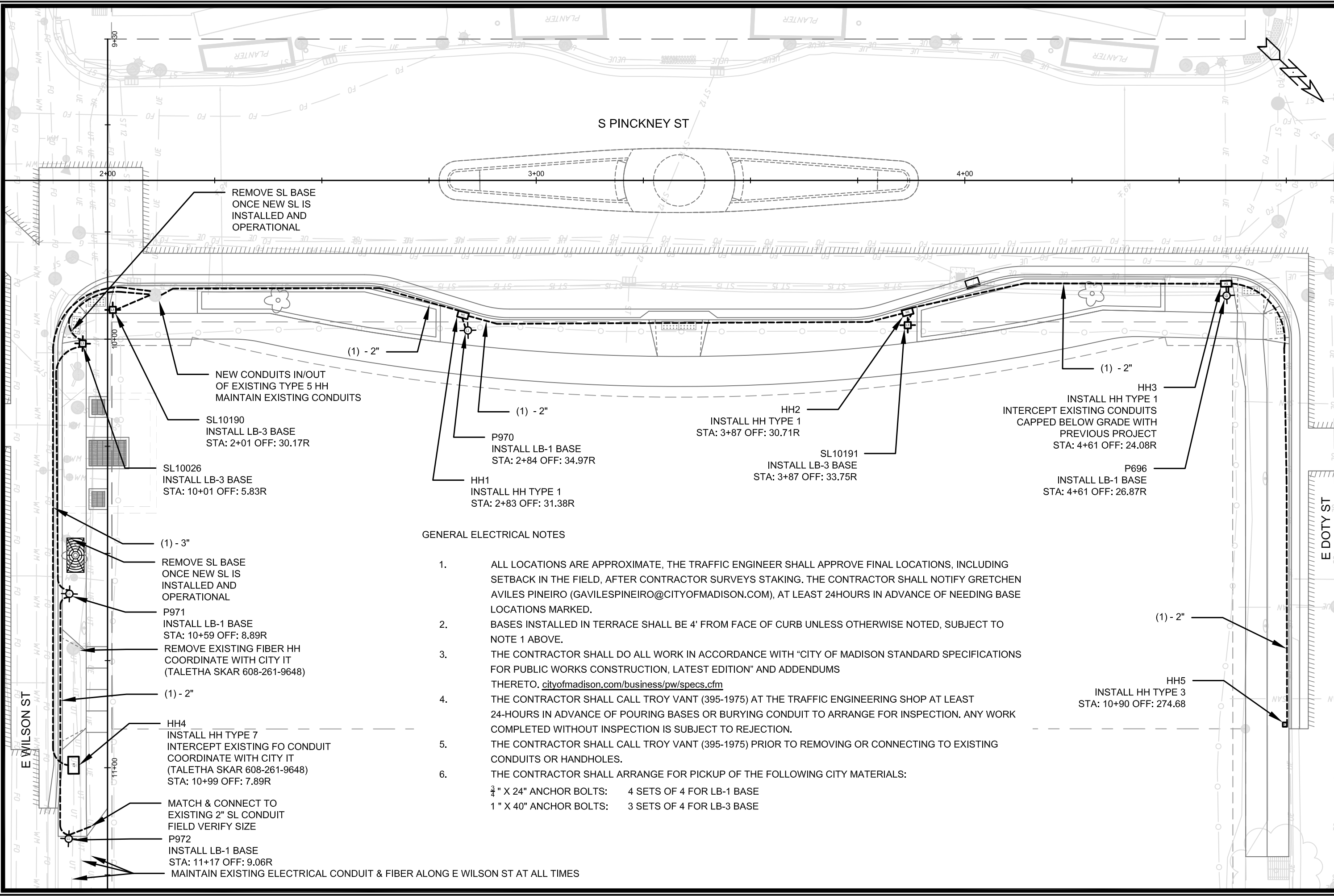
DATE	BY
REVISION	DATE
13804	3/19/2024 9:40 AM
Scale: Custom	D-3

13804
 MADISON, WI
 CONTRACT NO: 9077

TREE GRATE & PLANTER DETAIL
 231 S PINCKNEY STREET - BLOCK 105
 M:\DESIGN\Projects\13804\CAD\Streets\13804EN-Details.dwg



13804
 D-3



REMOVE SL BASE ONCE NEW SL IS INSTALLED AND OPERATIONAL

NEW CONDUITS IN/OUT OF EXISTING TYPE 5 HH MAINTAIN EXISTING CONDUITS

SL10190
INSTALL LB-3 BASE
STA: 2+01 OFF: 30.17R

SL10026
INSTALL LB-3 BASE
STA: 10+01 OFF: 5.83R

HH1
INSTALL HH TYPE 1
STA: 2+83 OFF: 31.38R

P970
INSTALL LB-1 BASE
STA: 2+84 OFF: 34.97R

HH2
INSTALL HH TYPE 1
STA: 3+87 OFF: 30.71R

SL10191
INSTALL LB-3 BASE
STA: 3+87 OFF: 33.75R

HH3
INSTALL HH TYPE 1
INTERCEPT EXISTING CONDUITS
CAPPED BELOW GRADE WITH
PREVIOUS PROJECT
STA: 4+61 OFF: 24.08R

P696
INSTALL LB-1 BASE
STA: 4+61 OFF: 26.87R

(1) - 3"

REMOVE SL BASE ONCE NEW SL IS INSTALLED AND OPERATIONAL

P971
INSTALL LB-1 BASE
STA: 10+59 OFF: 8.89R

REMOVE EXISTING FIBER HH
COORDINATE WITH CITY IT
(TALETHA SKAR 608-261-9648)

(1) - 2"

HH4
INSTALL HH TYPE 7
INTERCEPT EXISTING FO CONDUIT
COORDINATE WITH CITY IT
(TALETHA SKAR 608-261-9648)
STA: 10+99 OFF: 7.89R

MATCH & CONNECT TO EXISTING 2" SL CONDUIT
FIELD VERIFY SIZE

P972
INSTALL LB-1 BASE
STA: 11+17 OFF: 9.06R

MAINTAIN EXISTING ELECTRICAL CONDUIT & FIBER ALONG E WILSON ST AT ALL TIMES

GENERAL ELECTRICAL NOTES

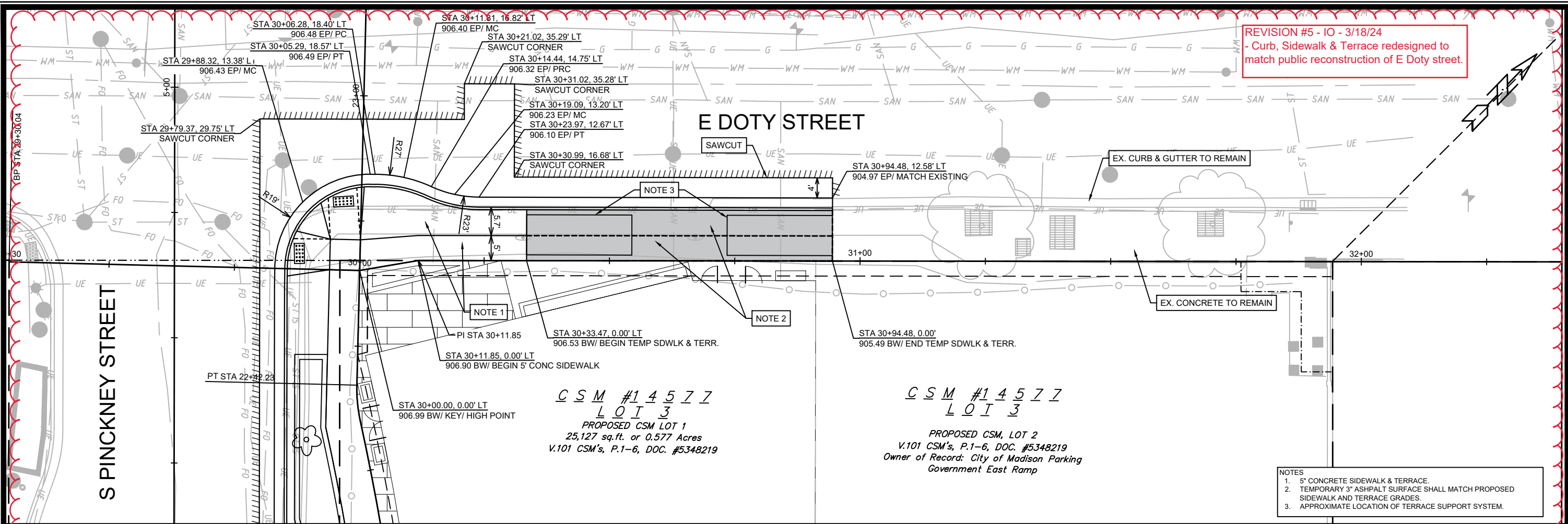
1. ALL LOCATIONS ARE APPROXIMATE, THE TRAFFIC ENGINEER SHALL APPROVE FINAL LOCATIONS, INCLUDING SETBACK IN THE FIELD, AFTER CONTRACTOR SURVEYS STAKING. THE CONTRACTOR SHALL NOTIFY GRETCHEN AVILES PINEIRO (GAVILESPINEIRO@CITYOFMADISON.COM), AT LEAST 24HOURS IN ADVANCE OF NEEDING BASE LOCATIONS MARKED.
2. BASES INSTALLED IN TERRACE SHALL BE 4' FROM FACE OF CURB UNLESS OTHERWISE NOTED, SUBJECT TO NOTE 1 ABOVE.
3. THE CONTRACTOR SHALL DO ALL WORK IN ACCORDANCE WITH "CITY OF MADISON STANDARD SPECIFICATIONS FOR PUBLIC WORKS CONSTRUCTION, LATEST EDITION" AND ADDENDUMS THERETO. cityofmadison.com/business/pw/specs.cfm
4. THE CONTRACTOR SHALL CALL TROY VANT (395-1975) AT THE TRAFFIC ENGINEERING SHOP AT LEAST 24-HOURS IN ADVANCE OF POURING BASES OR BURYING CONDUIT TO ARRANGE FOR INSPECTION. ANY WORK COMPLETED WITHOUT INSPECTION IS SUBJECT TO REJECTION.
5. THE CONTRACTOR SHALL CALL TROY VANT (395-1975) PRIOR TO REMOVING OR CONNECTING TO EXISTING CONDUITS OR HANDHOLES.
6. THE CONTRACTOR SHALL ARRANGE FOR PICKUP OF THE FOLLOWING CITY MATERIALS:

3/4" X 24" ANCHOR BOLTS:	4 SETS OF 4 FOR LB-1 BASE
1" X 40" ANCHOR BOLTS:	3 SETS OF 4 FOR LB-3 BASE

(1) - 2"

HH5
INSTALL HH TYPE 3
STA: 10+90 OFF: 274.68

ELECTRICAL PLAN	13804	MADISON, WI	CONTRACT NO: 9077	E-1
231 S PINCKNEY STREET - BLOCK 105				
M:\DESIGN\Projects\13804\CAD\Traffic\13804-TE-Electrical.dwg				
13804				
E-1				

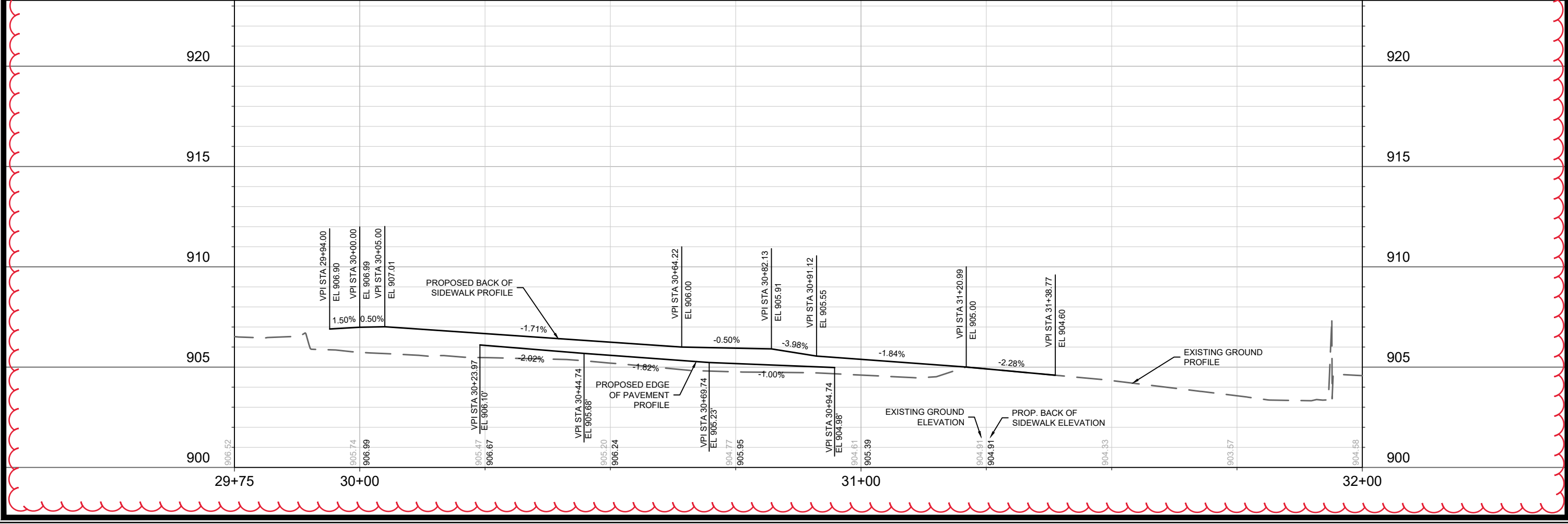


REVISION #5 - IO - 3/18/24
 - Curb, Sidewalk & Terrace redesigned to match public reconstruction of E Doty street.

CSM #14577
 LOT 3
 PROPOSED CSM LOT 1
 25,127 sq. ft. or 0.577 Acres
 V.101 CSM's, P.1-6, DOC. #5348219

CSM #14577
 LOT 3
 PROPOSED CSM, LOT 2
 V.101 CSM's, P.1-6, DOC. #5348219
 Owner of Record: City of Madison Parking Government East Ramp

- NOTES
- 5' CONCRETE SIDEWALK & TERRACE.
 - TEMPORARY 3" ASPHALT SURFACE SHALL MATCH PROPOSED SIDEWALK AND TERRACE GRADES.
 - APPROXIMATE LOCATION OF TERRACE SUPPORT SYSTEM.



MARK	REVISION	DATE	BY
13804			

Scale: 1" = 20'

Designated By: IO Date: 3/18/24 9:00 AM

13804

P-1

13804
 MADISON, WI
 CONTRACT NO: 9077

SIDEWALK PLAN & PROFILE - E DOTY STREET
 231 S PINCKNEY STREET - BLOCK 105
 M:\DESIGN\Projects\13804\CAD\Streets\13804EN-PnP.dwg

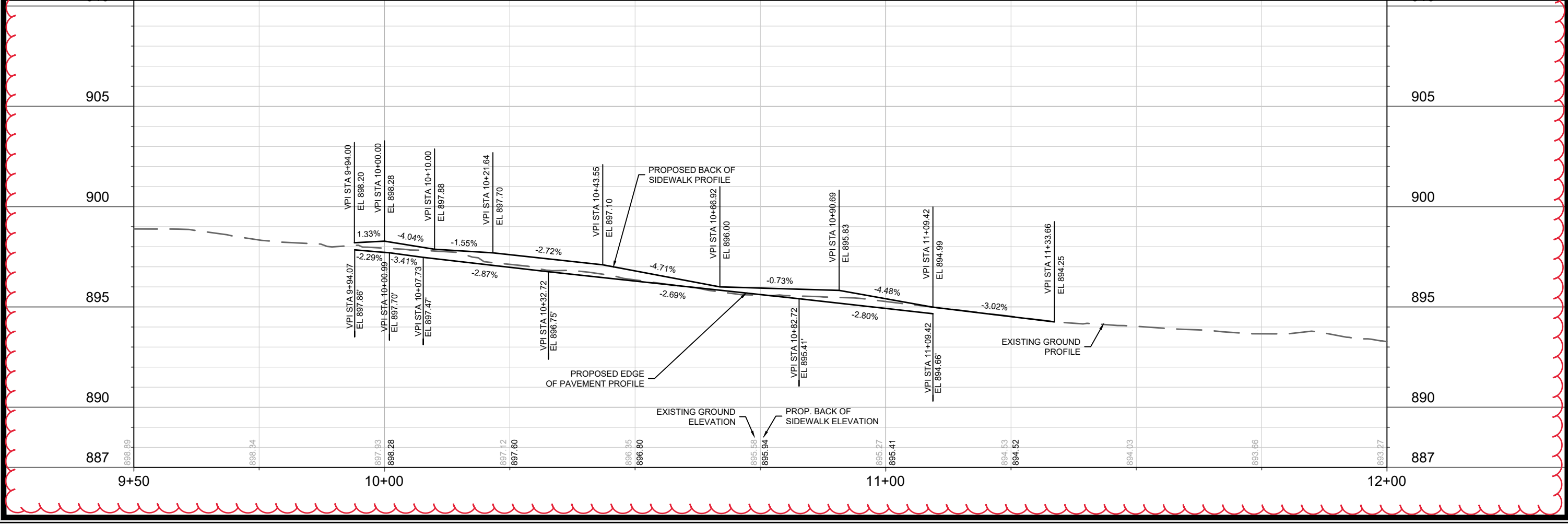
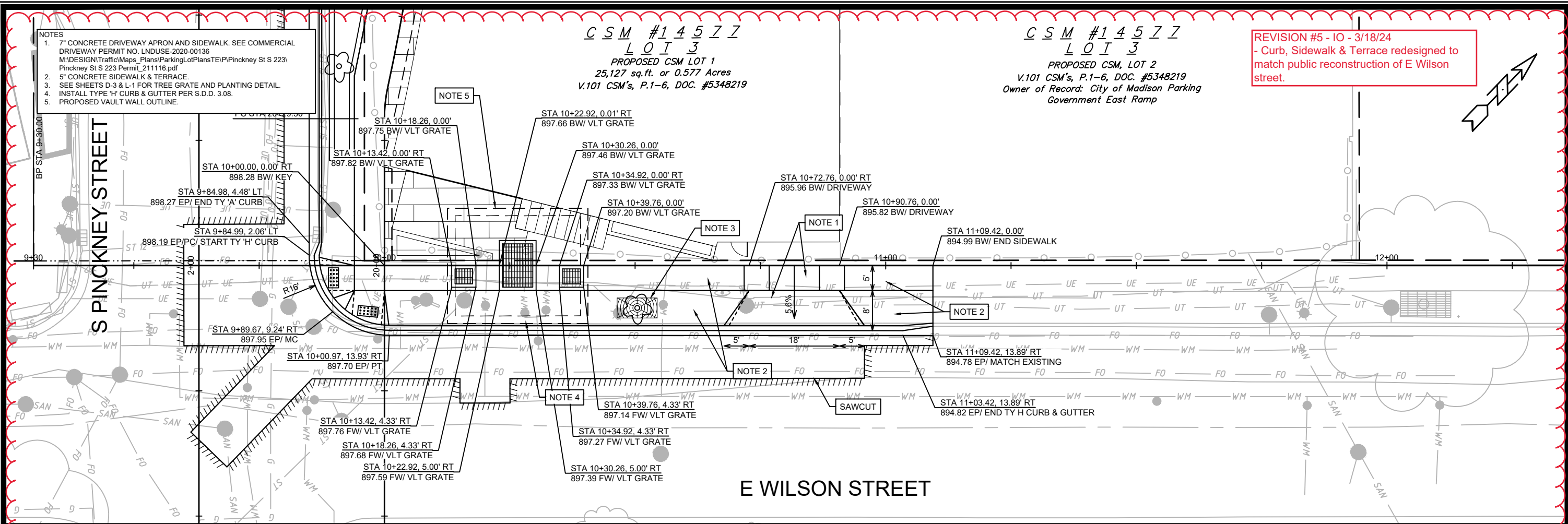
13804
 P-1

- NOTES
- 7" CONCRETE DRIVEWAY APRON AND SIDEWALK. SEE COMMERCIAL DRIVEWAY PERMIT NO. LNDUSE-2020-00136. M:\DESIGN\Traffic\Maps_Plan\Parking\LotPlans\TE\PI\Pinkney St S 223\Pinckney St S 223 Permit_211116.pdf
 - 5" CONCRETE SIDEWALK & TERRACE.
 - SEE SHEETS D-3 & L-1 FOR TREE GRATE AND PLANTING DETAIL.
 - INSTALL TYPE 'H' CURB & GUTTER PER S.D.D. 3.08.
 - PROPOSED VAULT WALL OUTLINE.

CSM #14577
 LOT 3
 PROPOSED CSM LOT 1
 25,127 sq. ft. or 0.577 Acres
 V.101 CSM's, P.1-6, DOC. #5348219

CSM #14577
 LOT 3
 PROPOSED CSM, LOT 2
 V.101 CSM's, P.1-6, DOC. #5348219
 Owner of Record: City of Madison Parking Government East Ramp

REVISION #5 - 10 - 3/18/24
 - Curb, Sidewalk & Terrace redesigned to match public reconstruction of E Wilson street.



13804
 MADISON, WI
 CONTRACT NO: 9077

SIDWALK PLAN & PROFILE - E WILSON STREET
 231 S PINCKNEY STREET - BLOCK 105

M:\DESIGN\Projects\13804\CAD\Streets\13804EN-PnP.dwg

13804
 P-2

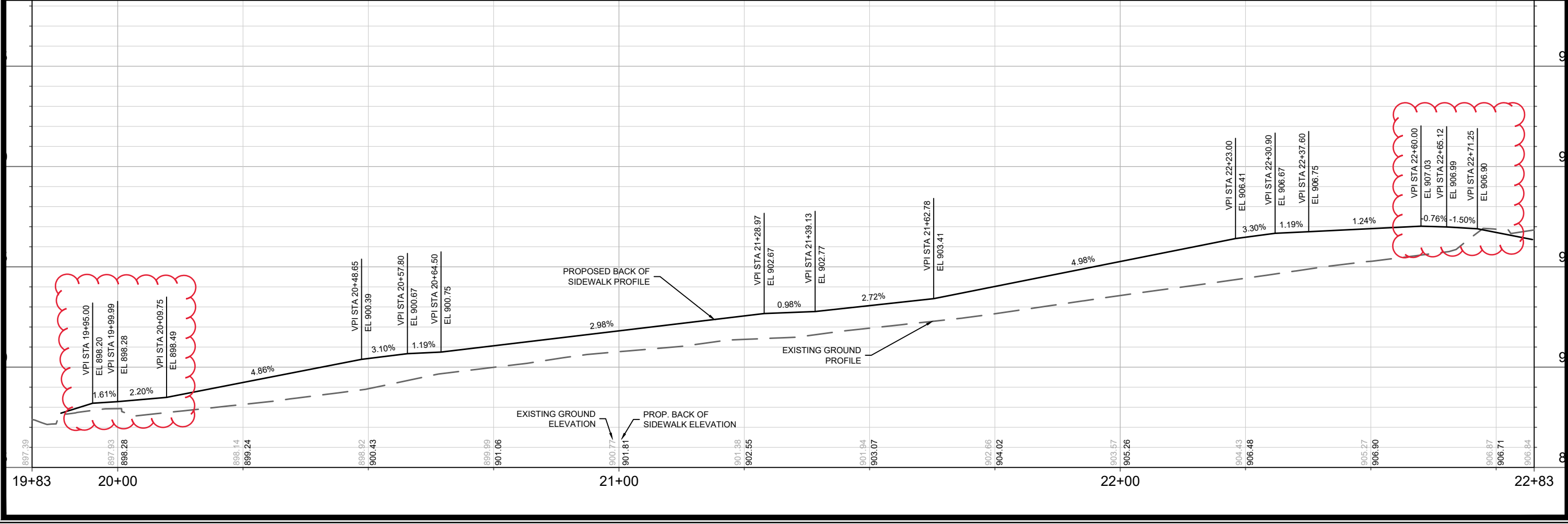
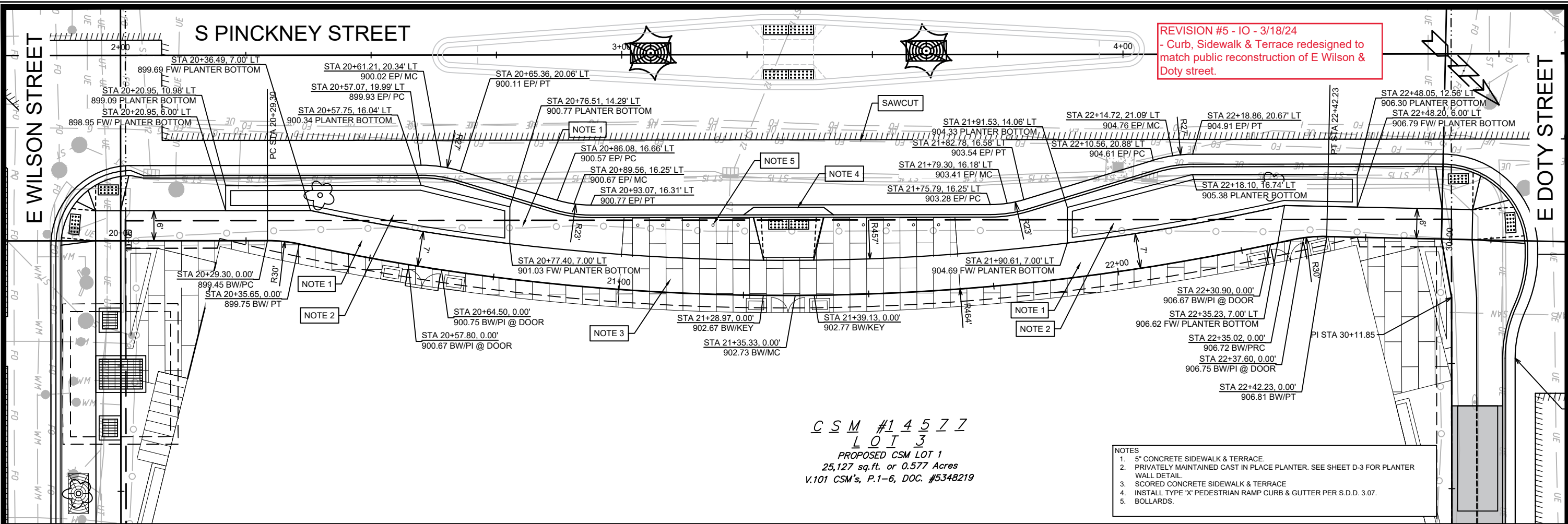
REVISION	DATE	BY

Scale: 1" = 20'

Designed By: ID
 Date: 3/20/2024 9:45 AM

13804

P-2



13804
MADISON, WI
CONTRACT NO: 9077

SIDEWALK PLAN & PROFILE - S PINCKNEY STREET
231 S PINCKNEY STREET - BLOCK 105

M:\DESIGN\Projects\13804\CAD\Streets\13804EN-PrP.dwg

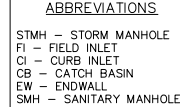
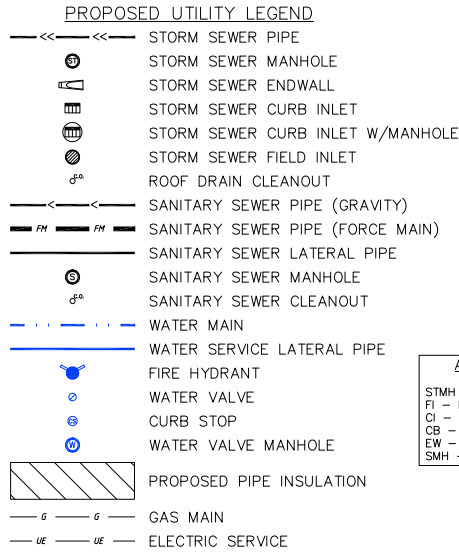
13804
P-3

MARK	REVISION	DATE	BY

Scale: 1" = 20'

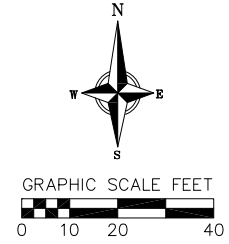
Designed By: IO Date: 3/19/2024 8:29 AM

13804

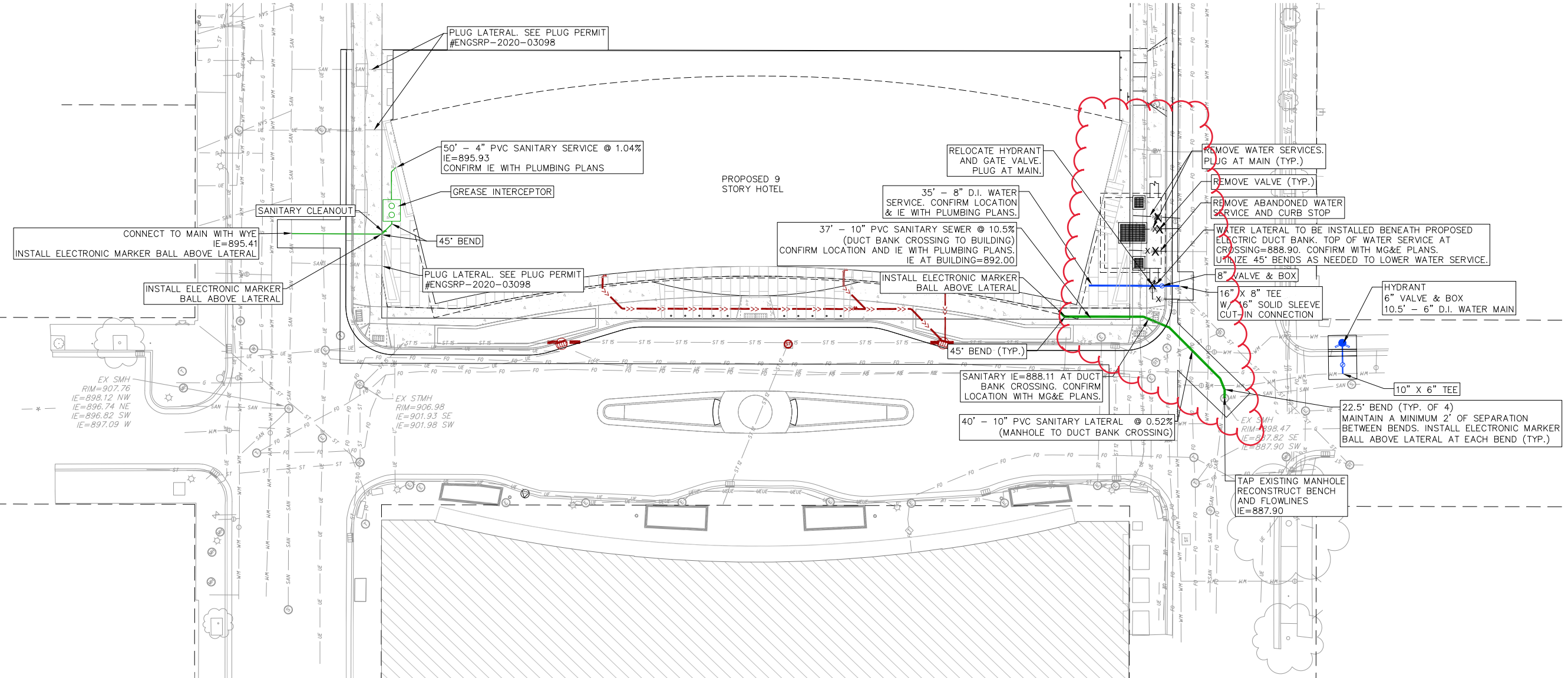


UTILITY NOTES:

- CONTRACTOR TO VERIFY EXISTING UTILITY LOCATIONS AND ELEVATIONS PRIOR TO STARTING WORK.
- SANITARY & STORM SEWER LENGTHS SHOWN ARE FROM CENTER OF STRUCTURE TO CENTER OF STRUCTURE. STORM SEWER END SECTIONS ARE INCLUDED IN THE LENGTH AND SLOPE OF THE PIPE.
- CONTRACTOR SHALL INVESTIGATE ALL UTILITY CROSSINGS PRIOR TO CONSTRUCTION AND NOTIFY ENGINEER OF ANY CONFLICTS.
- CONTRACTOR SHALL BE RESPONSIBLE FOR ADJUSTING ALL UTILITY STRUCTURES (MANHOLE RIMS, WATER VALVES, AND CURB STOPS), IF NECESSARY.
- FOR ALL SEWER AND WATER MAIN CROSSINGS: PROVIDE MINIMUM 18" SEPARATION WHEN WATER MAIN CROSSES BELOW SEWER AND MINIMUM 6" SEPARATION WHEN WATER MAIN CROSSES ABOVE SEWER.
- IF DEWATERING OPERATIONS EXCEED 70 GALLONS PER MINUTE OF PUMPING CAPACITY, A DEWATERING WELL PERMIT SHALL BE OBTAINED FROM THE DNR PRIOR TO STARTING ANY DEWATERING ACTIVITIES.
- A COPY OF THE APPROVED UTILITY PLANS, SPECIFICATIONS AND PLUMBING PERMIT APPROVAL LETTER SHALL BE ON-SITE DURING CONSTRUCTION AND IS OPEN TO INSPECTION BY AUTHORIZED REPRESENTATIVES OF THE DEPARTMENT OF SAFETY AND PROFESSIONAL SERVICES AND OTHER LOCAL INSPECTORS.
- STORM BUILDING SEWER PIPE SHALL CONFORM TO ONE OF THE STANDARDS LISTED IN TABLE 384.30-6 OF SPS 384.30(3)(c).
- PRIVATE WATER SERVICES AND PRIVATE WATER MAINS SHALL CONFORM TO ONE OF THE STANDARDS LISTED IN TABLE 384.30-7 OF SPS 384.30(4)(d).
- PRIVATE SANITARY SEWER AND LATERALS SHALL BE POLYVINYL CHLORIDE (PVC) ASTM D3034 - SDR 35 OR APPROVED EQUAL MATERIAL THAT CONFORMS TO ONE OF THE STANDARDS LISTED IN TABLE 384.30-3 OF SPS 384.30(2)(c).
- A MEANS TO LOCATE BURIED UNDERGROUND EXTERIOR NON METALLIC SEWERS/MAINS AND WATER SERVICES/MAINS MUST BE PROVIDED WITH TRACER WIRE OR OTHER METHODS IN ORDER TO BE LOCATED PER SPS 382.10(11)(h) AND SPS 382.40(8)(k).
- EXTERIOR WATER SUPPLY PIPING SETBACKS AND CROSSINGS SHALL BE IN ACCORDANCE WITH SPS 382.40(8)(b).
- NO PERSON MAY ENGAGE IN PLUMBING WORK IN THE STATE UNLESS LICENSED TO DO SO BY THE DEPARTMENT OF SAFETY AND PROFESSIONAL SERVICES PER S.145.06.
- SITE CONTRACTOR SHALL LEAVE SANITARY AND WATER LATERALS FIVE (5) FEET SHORT (HORIZONTALLY) FROM THE BUILDING. BUILDING PLUMBER SHALL VERIFY SIZE, LOCATION, AND INVERT ELEVATION OF PROPOSED SANITARY AND WATER LATERALS.
- CONTRACTOR SHALL FIELD VERIFY THE SIZE, TYPE, LOCATION, AND ELEVATION OF EXISTING UTILITIES PRIOR TO INSTALLING ANY ON-SITE UTILITIES OR STRUCTURES. CONTACT ENGINEER PRIOR TO INSTALLATION IF DISCREPANCY EXISTS WITHIN THESE PLANS.
- PROPOSED UTILITY SERVICE LINES SHOWN ARE APPROXIMATE. COORDINATE THE EXACT LOCATIONS WITH THE PLUMBING DRAWINGS. COORDINATE THE LOCATIONS WITH THE PLUMBING CONTRACTOR AND/OR OWNER'S CONSTRUCTION REPRESENTATIVE PRIOR TO INSTALLATION OF ANY NEW UTILITIES.
- CONTRACTOR SHALL BE RESPONSIBLE FOR COORDINATING THE RELOCATION OF ANY UTILITIES ENCOUNTERED AND REPLACEMENT OF ANY UTILITIES DAMAGED WITHIN INFLUENCE ZONE OF NEW CONSTRUCTION. CONTACT ENGINEER IF THE EXISTING UTILITIES VARY APPRECIABLY FROM THE PLANS.
- ALL WATER MAIN AND SERVICES SHALL BE INSTALLED AT A MINIMUM DEPTH OF 6.5' FROM TOP OF FINISHED GROUND ELEVATION TO TOP OF MAIN.
- IT IS THE CONTRACTOR'S RESPONSIBILITY TO VERIFY THAT THE EXISTING VALVES WILL HOLD THE PRESSURE TEST PRIOR TO CONNECTION. THE CITY IS NOT RESPONSIBLE FOR ANY COSTS INCURRED DUE TO THE CONTRACTOR NOT VERIFYING THAT THE EXISTING VALVE WILL HOLD THE PRESSURE TEST PRIOR TO CONNECTION. IF A NEW VALVE IS REQUIRED, THE APPLICANT WILL BE REQUIRED TO INSTALL ONE AT THEIR EXPENSE, AT THE POINT OF CONNECTION.
- CLEAN OUT ALL EXISTING AND PROPOSED STORM INLETS AND CATCH BASINS AT THE COMPLETION OF CONSTRUCTION.
- FOR WATER SERVICES AND HYDRANT LEADS, ALL MECHANICAL JOINTS TO BE RESTRAINED WITH MEGALUG 1100 OR APPROVED EQUAL. PIPE JOINTS TO BE RESTRAINED AS INDICATED WITH MEGALUG 1700 HARNES OR APPROVED EQUAL.
- CONNECTIONS TO EXISTING WATER MAIN TO BE BY LIVE TAPPING. CONTRACTOR IS RESPONSIBLE FOR ALL CONNECTION FEES AND COSTS PAYABLE TO THE CITY OF MADISON FOR LIVE TAPPING, AND ALL OTHER WORK AND COSTS ASSOCIATED WITH LIVE TAPPING.
- THE RIGHT-OF-WAY IS THE SOLE JURISDICTION OF THE CITY OF MADISON AND IS SUBJECT TO CHANGE AT ANYTIME PER THE RECOMENTATION/PLAN OF TRAFFIC ENGINEERING AND CITY ENGINEERING DEPTS.
- POWER POLES AND OTHER OBSTRUCTIONS SHALL BE MOVED TO PROVIDE 2 FEET MINIMUM OF CLEAR DISTANCE FROM ANY FACE OF CURB OR EDGE OF SIDEWALK.
- THERE MAY BE EXISTING UTILITIES OR OTHER FEATURES WHICH ARE EITHER NOT SHOWN OR SHOWN INCORRECTLY ON THIS PLAN. IT IS THE RESPONSIBILITY OF THE DEVELOPER TO LOCATE AND IDENTIFY ALL UTILITIES AND TOPOGRAPHY WHICH MAY AFFECT THE CONSTRUCTION OF THESE IMPROVEMENTS.
- RELOCATION OR ADJUSTING OF PRIVATE UTILITY FACILITIES, SUCH AS POLES, PEDESTALS, BOXES, STRUCTURES, CASTINGS OR HANDHOLES, WITH PRIVATE UTILITY COMPANIES.



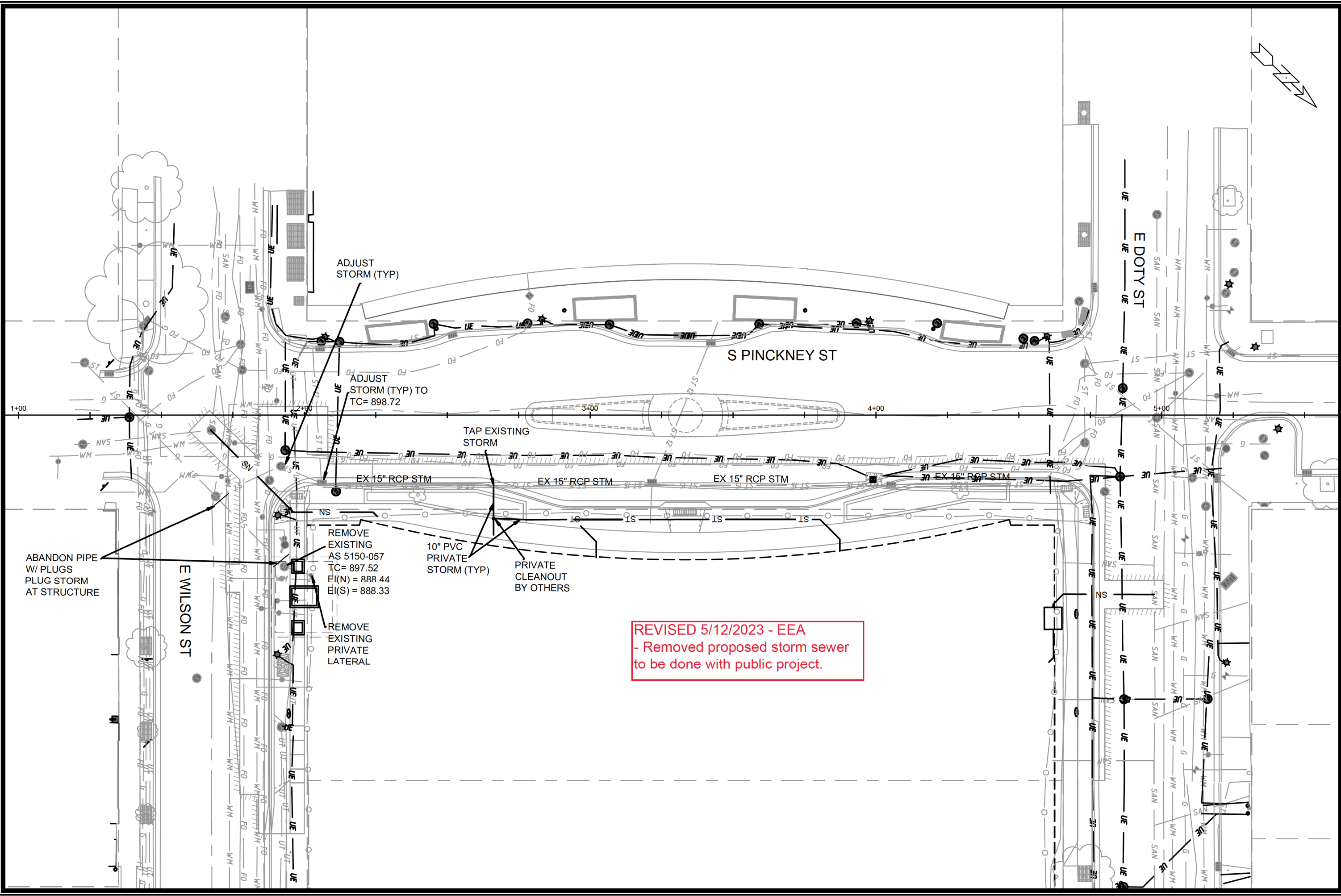
CITY PROJECT NAME: 231 S PINCKNEY STREET - BLOCK 105
 CITY PROJECT NO: 13804
 CITY CONTRACT NO: 9077



UTILITY PLAN - SANITARY SEWER & WATER
 231 S PINCKNEY STREET - BLOCK 105
 CITY OF MADISON
 DANE COUNTY, WISCONSIN

REVISIONS	NO.	DATE	REMARKS

DATE: 06-07-2022
 DRAFTER: CLAN
 CHECKED: TSCH
 PROJECT NO: 200325



ADJUST STORM (TYP)

ADJUST STORM (TYP) TO TC= 898.72

TAP EXISTING STORM

EX 15" RCP STM

EX 15" RCP STM

EX 15" RCP STM

EX 15" RCP STM

REMOVE EXISTING AS 5150-057 TC= 897.52 EI(N) = 888.44 EI(S) = 888.33

REMOVE EXISTING PRIVATE LATERAL

10" PVC PRIVATE STORM (TYP)

PRIVATE CLEANOUT BY OTHERS

REVISED 5/12/2023 - EEA
- Removed proposed storm sewer to be done with public project.

ABANDON PIPE W/ PLUGS PLUG STORM AT STRUCTURE

MARK	REVISION	DATE	BY
13804	5/12/2023	11:14 AM	Scale: 1"= 30'
U-2			

13804
MADISON, WI
9077
CONTRACT NO:

UTILITY SHEET - STORM SEWER PLAN
231 S PINCKNEY STREET - BLOCK 105
M:\DESIGN\Projects\13804\CAD\Sewers\13804SWR-PipeNetwork.dwg



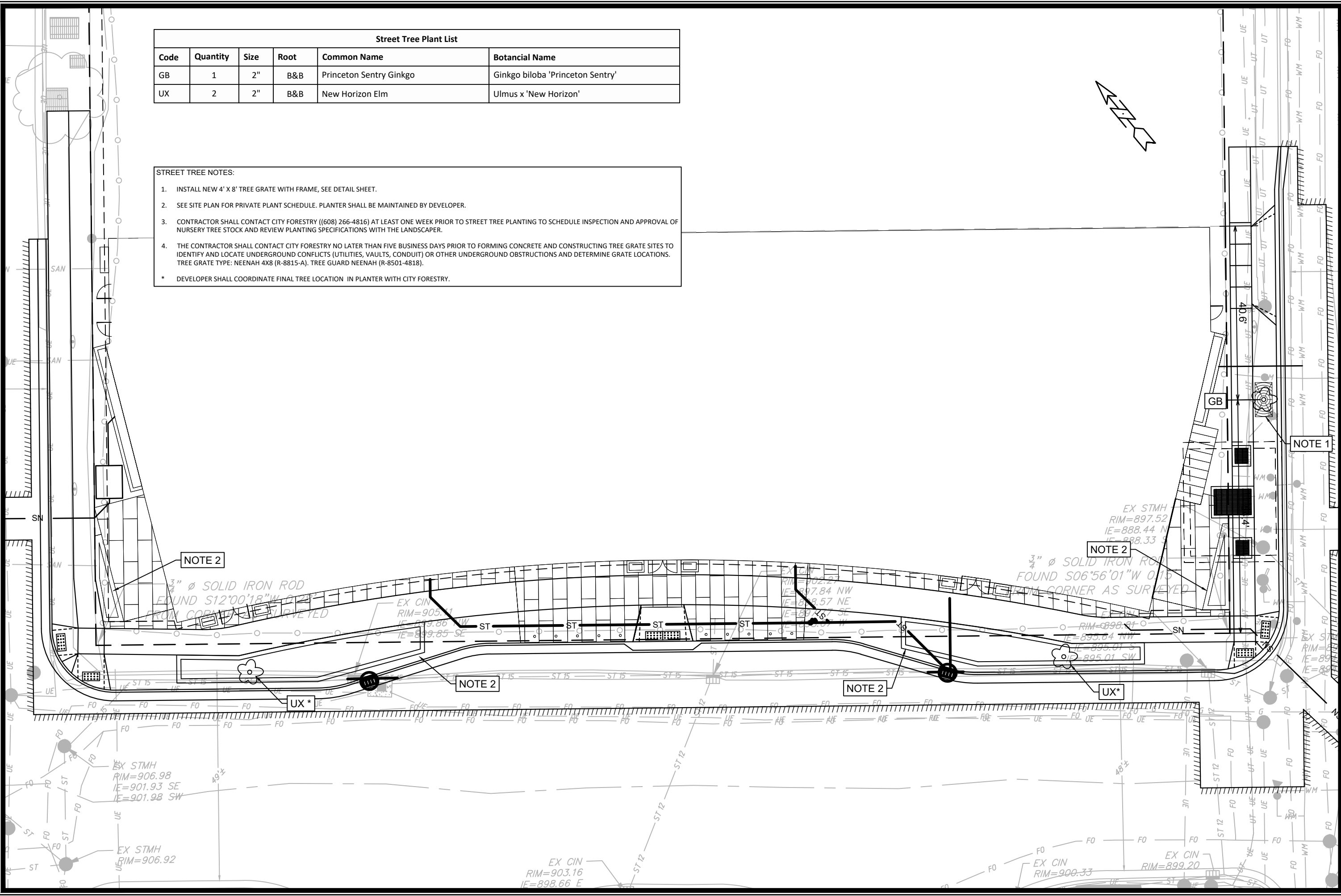
13804
U-2

Street Tree Plant List					
Code	Quantity	Size	Root	Common Name	Botanical Name
GB	1	2"	B&B	Princeton Sentry Ginkgo	Ginkgo biloba 'Princeton Sentry'
UX	2	2"	B&B	New Horizon Elm	Ulmus x 'New Horizon'

STREET TREE NOTES:

- INSTALL NEW 4' X 8' TREE GRATE WITH FRAME, SEE DETAIL SHEET.
- SEE SITE PLAN FOR PRIVATE PLANT SCHEDULE. PLANTER SHALL BE MAINTAINED BY DEVELOPER.
- CONTRACTOR SHALL CONTACT CITY FORESTRY ((608) 266-4816) AT LEAST ONE WEEK PRIOR TO STREET TREE PLANTING TO SCHEDULE INSPECTION AND APPROVAL OF NURSERY TREE STOCK AND REVIEW PLANTING SPECIFICATIONS WITH THE LANDSCAPER.
- THE CONTRACTOR SHALL CONTACT CITY FORESTRY NO LATER THAN FIVE BUSINESS DAYS PRIOR TO FORMING CONCRETE AND CONSTRUCTING TREE GRATE SITES TO IDENTIFY AND LOCATE UNDERGROUND CONFLICTS (UTILITIES, VAULTS, CONDUIT) OR OTHER UNDERGROUND OBSTRUCTIONS AND DETERMINE GRATE LOCATIONS. TREE GRATE TYPE: NEENAH 4X8 (R-8815-A). TREE GUARD NEENAH (R-8501-4818).

* DEVELOPER SHALL COORDINATE FINAL TREE LOCATION IN PLANTER WITH CITY FORESTRY.



MARK	REVISION	DATE	BY

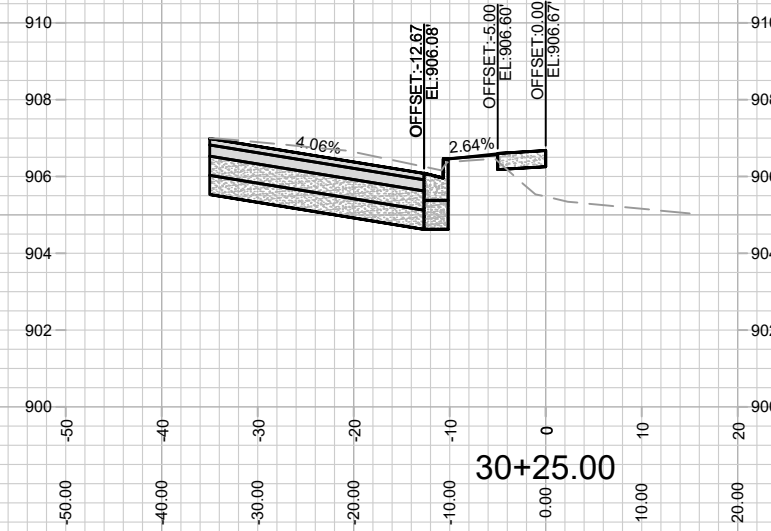
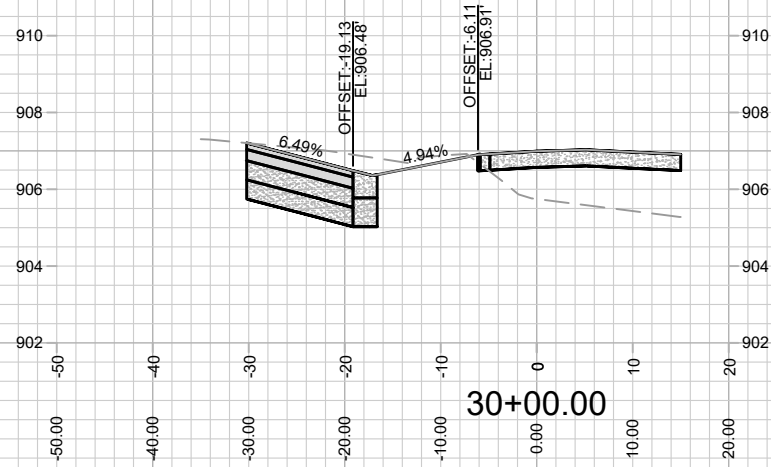
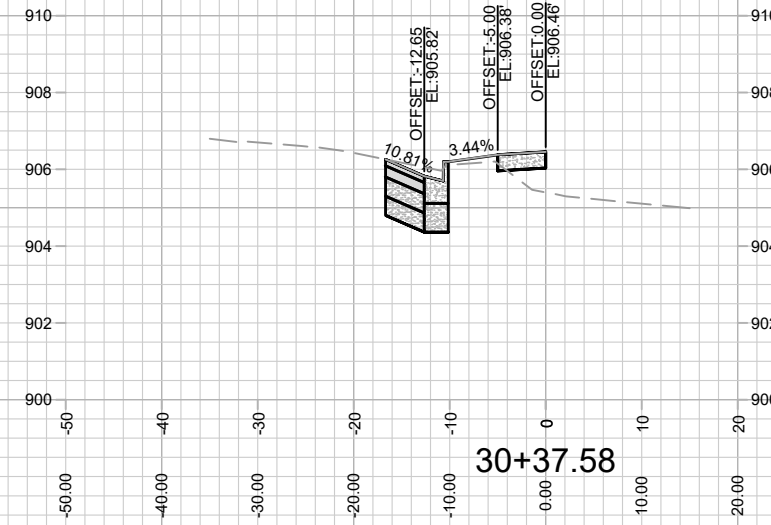
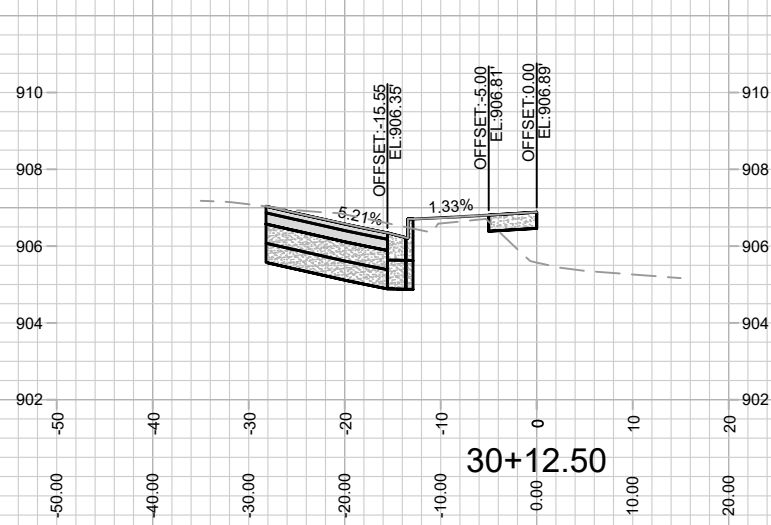
Designed By: ID
13804
Date: 5/10/2022 3:25 PM
Scale: 1/20
L-1

13804
MADISON, WI
CONTRACT NO: 9077

LANDSCAPING PLAN
231 S PINCKNEY STREET - BLOCK 105
M:\DESIGN\Projects\13804\CAD\Streets\13804EN-LandscapePlan.dwg

13804
L-1

REVISION #5 - IO - 3/18/24
- Curb, Sidewalk & Terrace redesigned to match public reconstruction of E Doty street.



13804

X-1

CROSS SECTIONS - E DOTY STREET

231 S PINCKNEY STREET - BLOCK 105

M:\DESIGN\Projects\13804\CAD\Streets\13804-EN-AIPProf&Corridor_Setup.dwg

13804

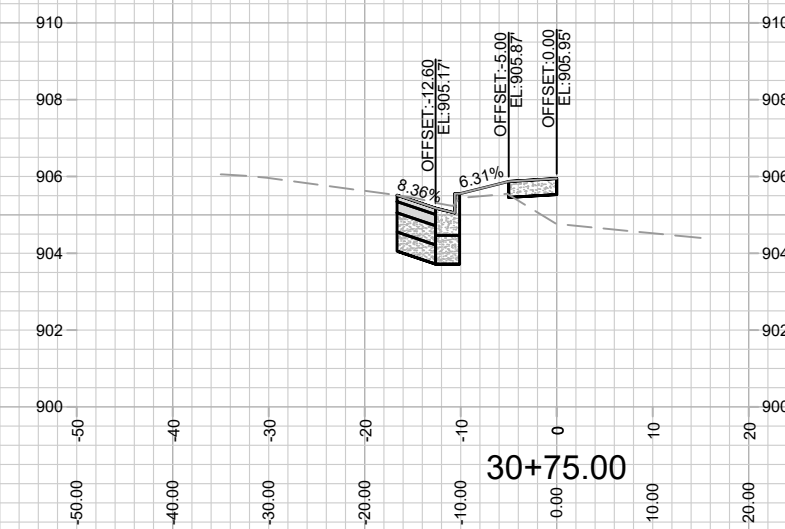
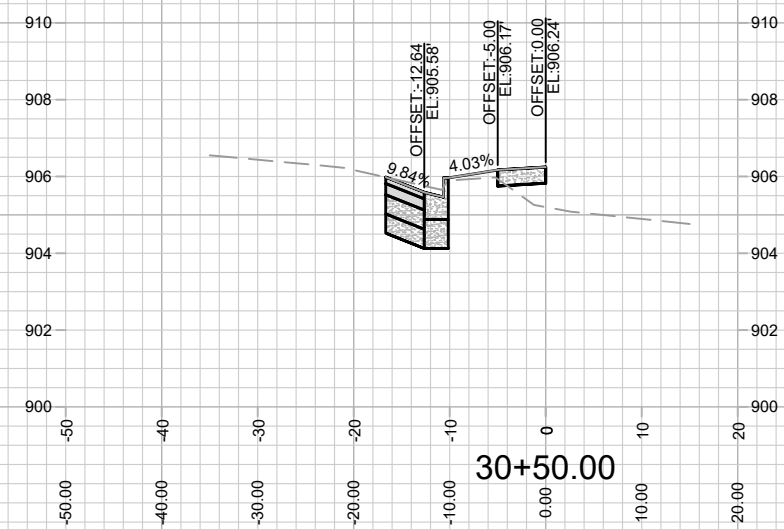
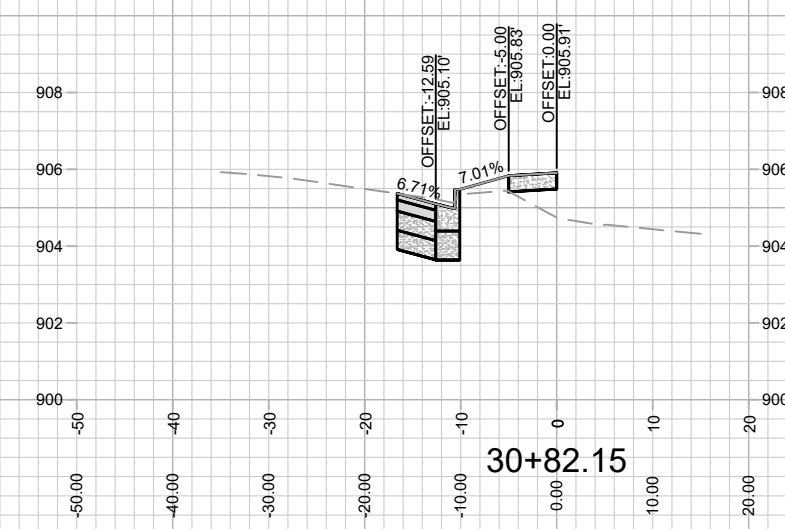
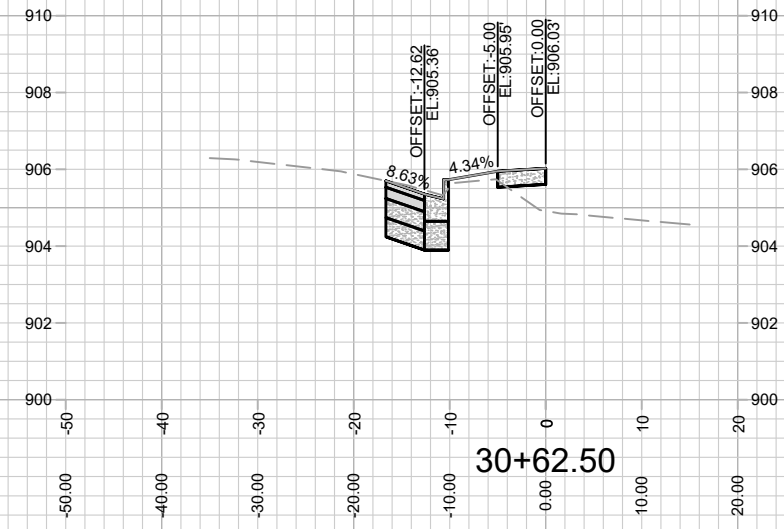
MADISON, WI

9077

CONTRACT NO:

MARK	REVISION	DATE	BY
13804	Designed By: IO	Date: 3/19/2024 6:53 AM	Scale: 1" = 20'
			X-1

REVISION #5 - IO - 3/18/24
 - Curb, Sidewalk & Terrace redesigned to match public reconstruction of E Doty street.



MARK	REVISION	DATE	BY
13804 <td>13804 <td>3/19/2024 <td>6:54 AM </td></td></td>	13804 <td>3/19/2024 <td>6:54 AM </td></td>	3/19/2024 <td>6:54 AM </td>	6:54 AM
13804 <td>13804 <td> <td> </td></td></td>	13804 <td> <td> </td></td>	<td> </td>	
13804 <td>13804 <td> <td> </td></td></td>	13804 <td> <td> </td></td>	<td> </td>	
13804 <td>13804 <td> <td> </td></td></td>	13804 <td> <td> </td></td>	<td> </td>	

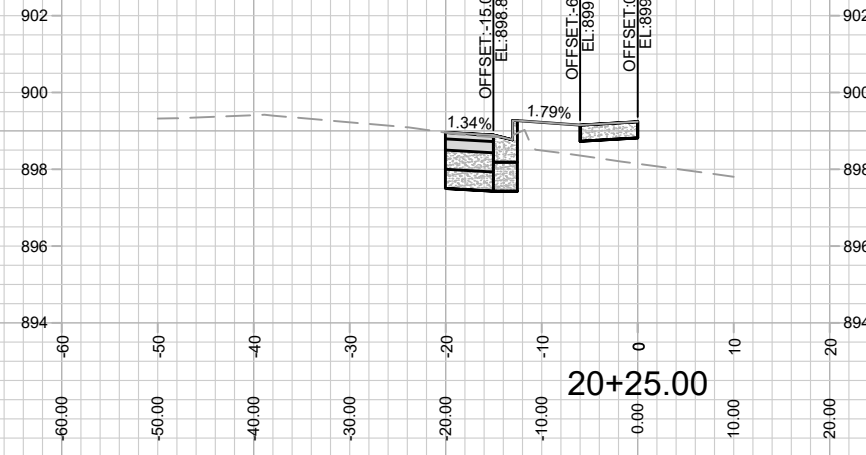
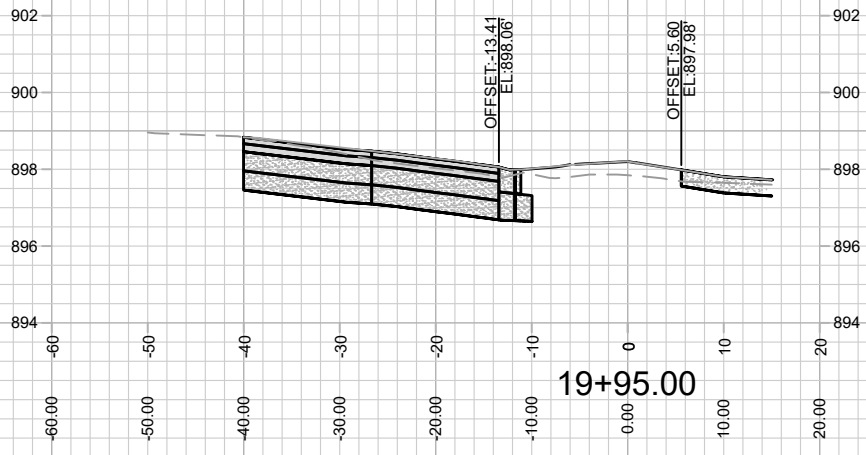
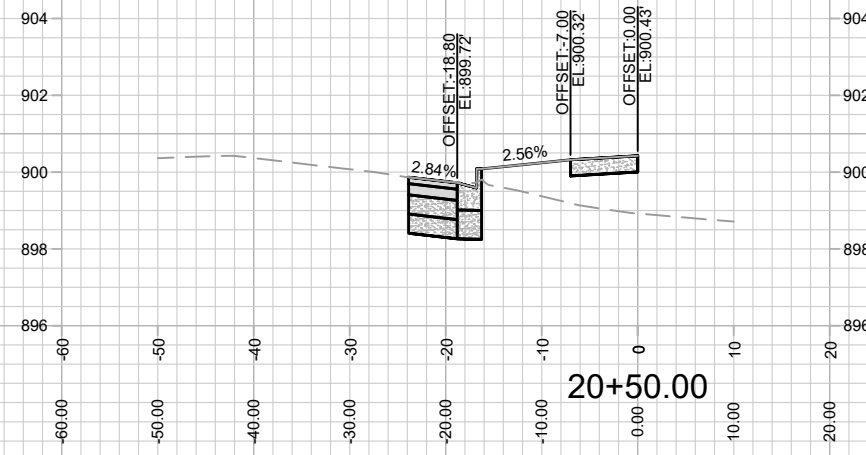
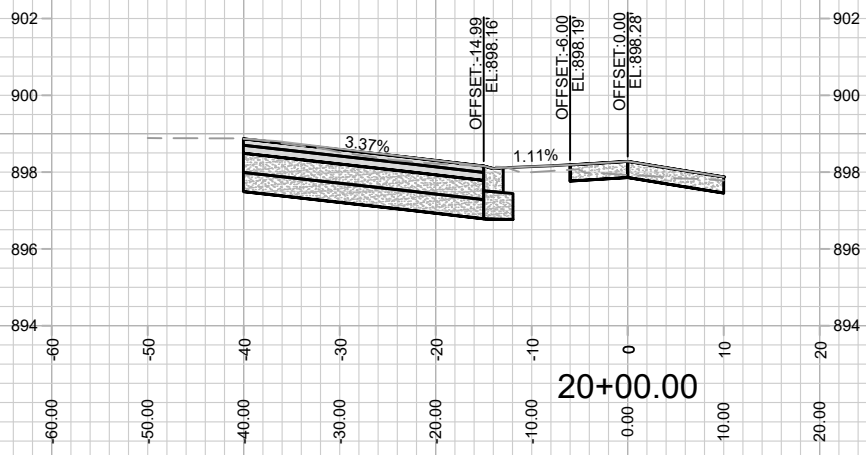
13804
 MADISON, WI
 9077
 CONTRACT NO:

CROSS SECTIONS - E DOTY STREET
 231 S PINCKNEY STREET - BLOCK 105
 M:\DESIGN\Projects\13804\CAD\Streets\13804-EN-AI\Prof&Corridor_Setup.dwg



13804
 X-2

REVISION #5 - IO - 3/18/24
 - Curb, Sidewalk & Terrace redesigned to match public reconstruction of E Wilson street.



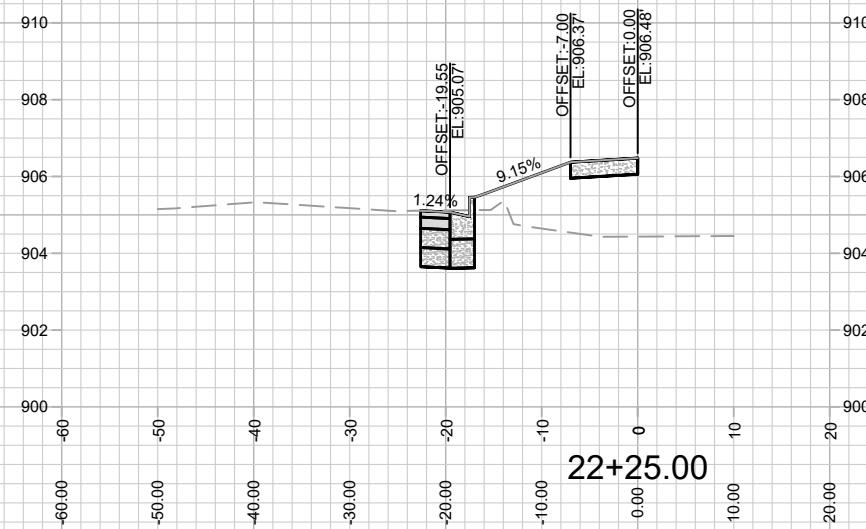
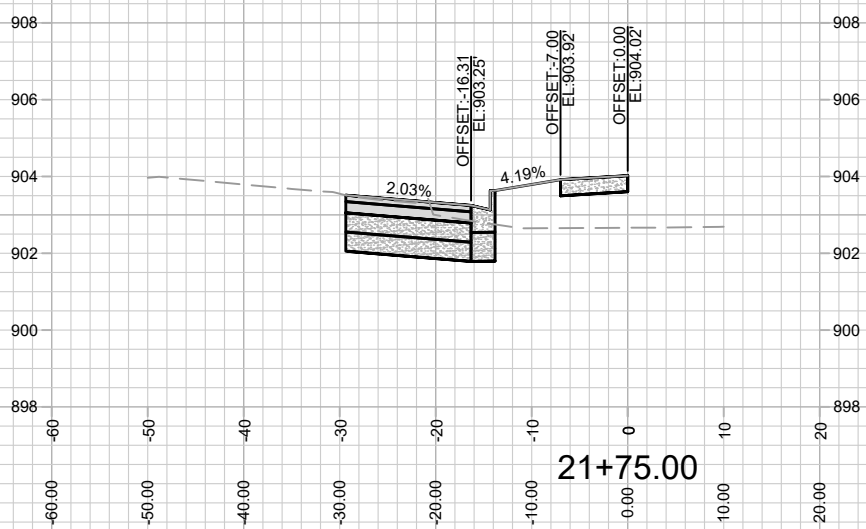
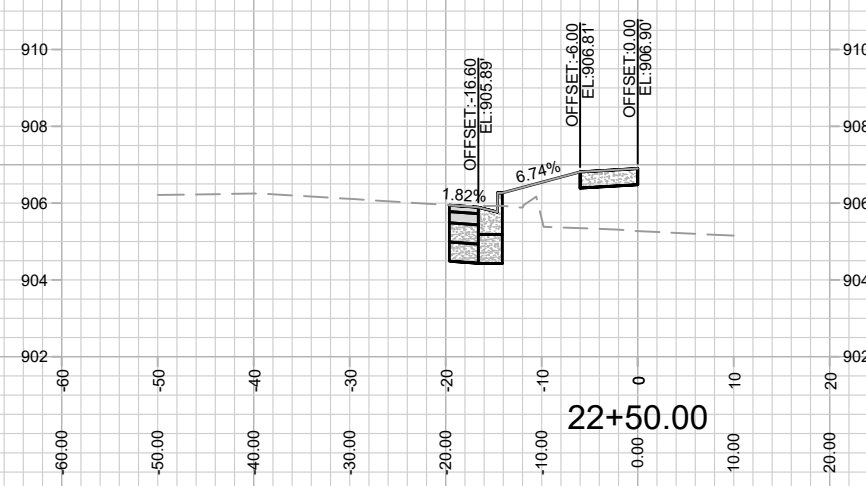
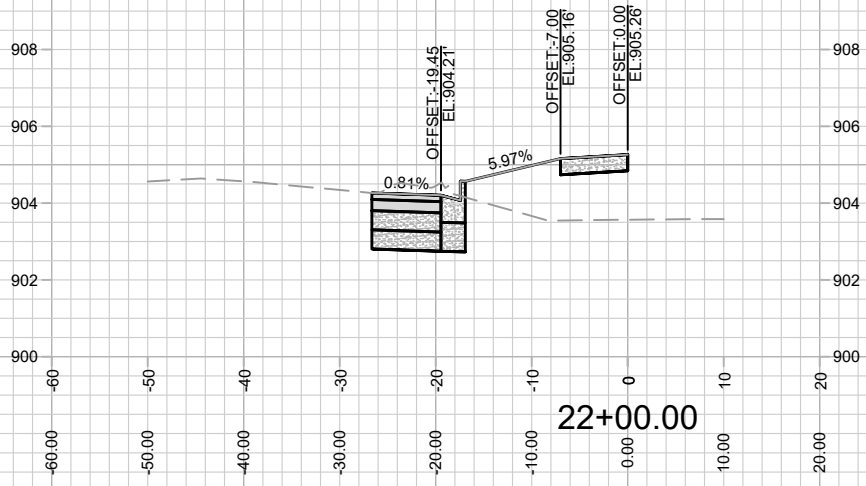
MARK	REVISION	DATE	BY
13804 <td>3/18/2024 6:54 AM <td></td> <td></td> </td>	3/18/2024 6:54 AM <td></td> <td></td>		
		Scale: 1" = 20'	X-3

13804
 MADISON, WI
 9077
 CONTRACT NO:

CROSS SECTIONS - S PINCKNEY STREET
 231 S PINCKNEY STREET - BLOCK 105
 M:\DESIGN\Projects\13804\CAD\Streets\13804-EN-AIP\Prof&Corridor_Setup.dwg



13804
 X-3



MARK	REVISION	DATE	BY

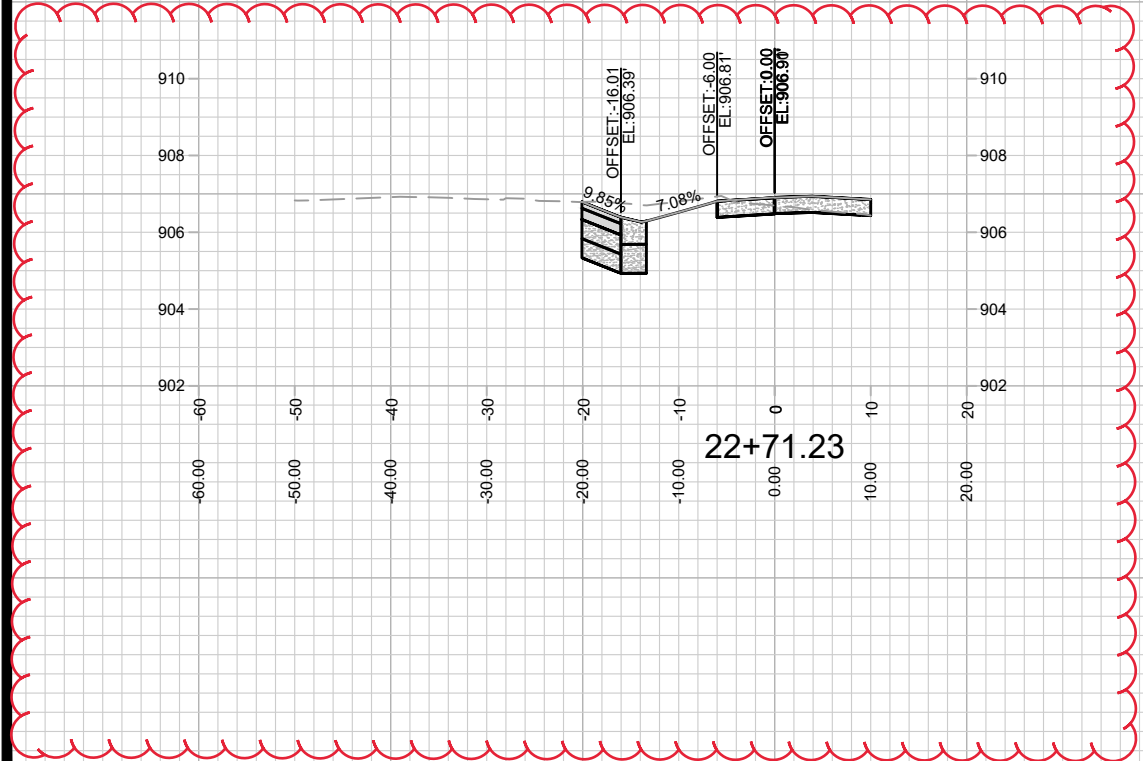
Designed By: ID
 13804
 Date: 3/19/2024 6:54 AM
 Scale: 1" = 20'
 X-5

CROSS SECTIONS - S PINCKNEY STREET
 231 S PINCKNEY STREET - BLOCK 105
 M:\DESIGN\Projects\13804\CAD\Streets\13804-EN-AI\Prof&Corridor_Setup.dwg

13804
 MADISON, WI
 9077
 CONTRACT NO:



REVISION #5 - IO - 3/18/24
- Curb, Sidewalk & Terrace redesigned to match public reconstruction of E Doty street.



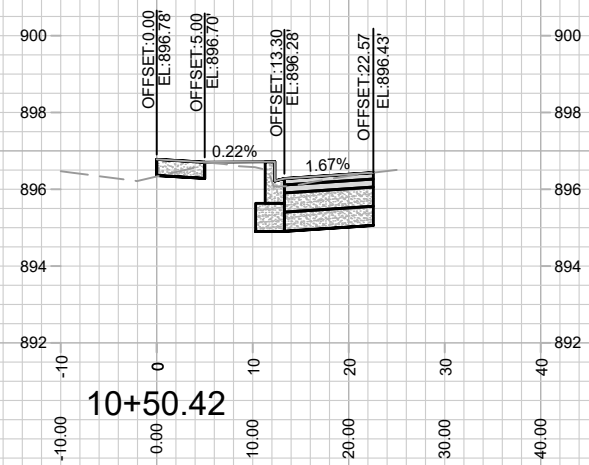
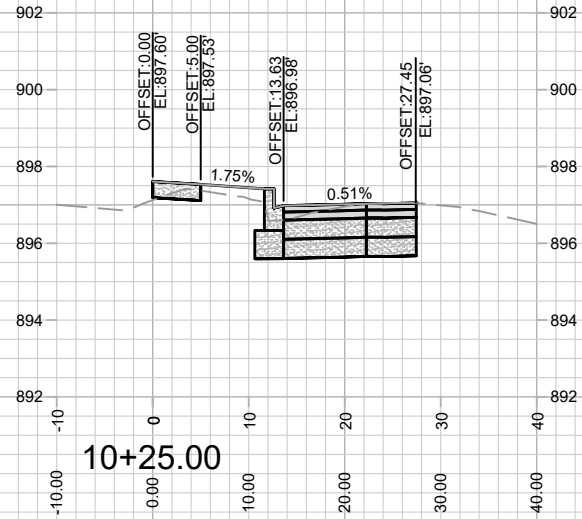
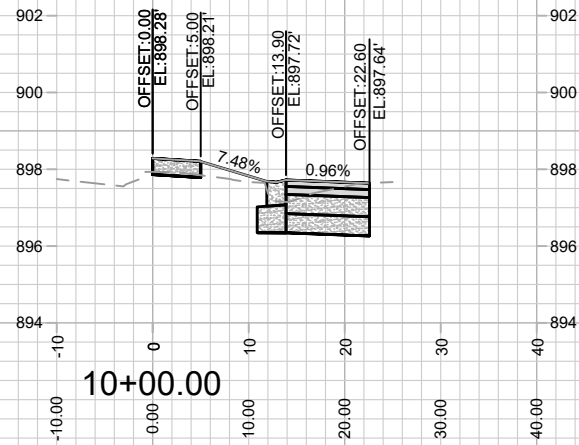
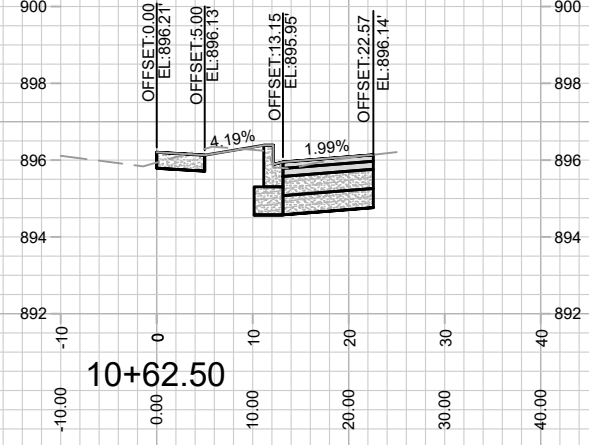
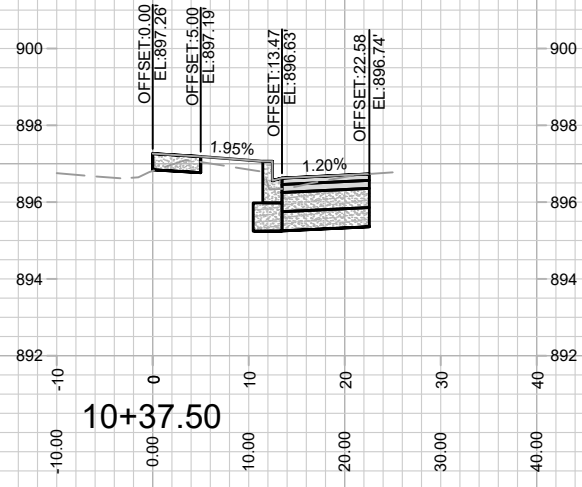
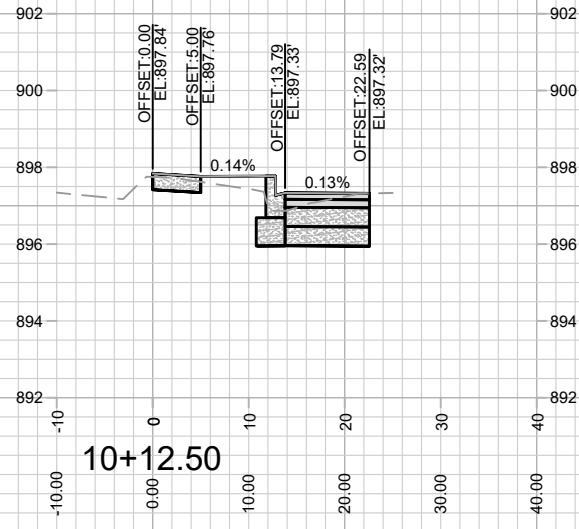
MARK	REVISION	DATE	BY
13804		3/18/2024	6:54 AM

13804
MADISON, WI
9077
CONTRACT NO:

CROSS SECTIONS - S PINCKNEY STREET
231 S PINCKNEY STREET - BLOCK 105
M:\DESIGN\Projects\13804\CAD\Streets\13804-EN-AIP\Prof&Corridor_Setup.dwg



13804
X-6



REVISION #5 - IO - 3/18/24
 - Curb, Sidewalk & Terrace redesigned to match public reconstruction of E Wilson street.

MARK	REVISION	DATE	BY
13804 <td>9077 <td>3/19/2024 <td>6:54 AM </td></td></td>	9077 <td>3/19/2024 <td>6:54 AM </td></td>	3/19/2024 <td>6:54 AM </td>	6:54 AM

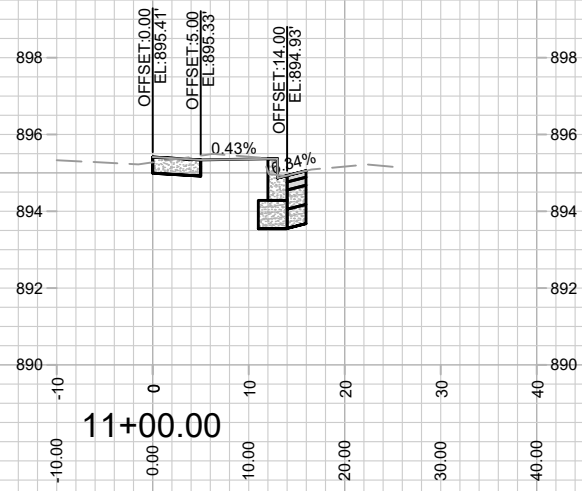
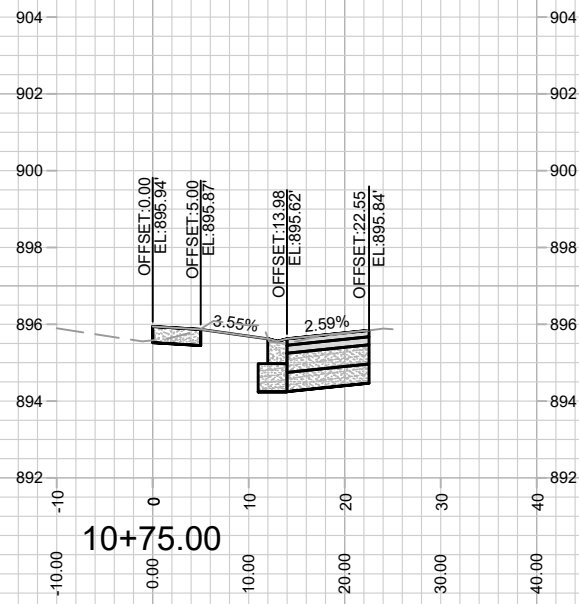
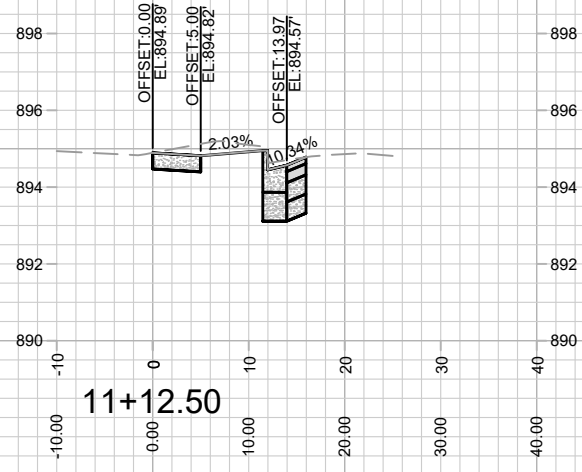
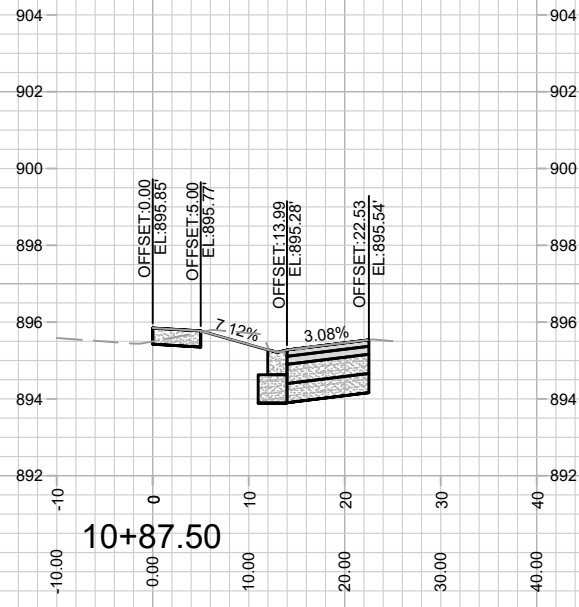
Scale: 1" = 20'

13804
 MADISON, WI
 CONTRACT NO: 9077

CROSS SECTIONS - E WILSON STREET
 231 S PINCKNEY STREET - BLOCK 105
 M:\DESIGN\Projects\13804\CAD\Streets\13804-EN-AI\Prof&Corridor_Setup.dwg

13804
 X-7

REVISION #5 - IO - 3/18/24
 - Curb, Sidewalk & Terrace redesigned to match public reconstruction of E Wilson street.



13804
X-8

CROSS SECTIONS - E WILSON STREET
 231 S PINCKNEY STREET - BLOCK 105

M:\DESIGN\Projects\13804\CAD\Streets\13804-EN-AI\Prof&Corridor_Setup.dwg

13804
MADISON, WI
CONTRACT NO: 9077

MARK	REVISION	DATE	BY
13804 <td>Designed By: IO <td>Date: 3/20/2024 8:10 AM <td>Scale: 1" = 20'</td> </td></td>	Designed By: IO <td>Date: 3/20/2024 8:10 AM <td>Scale: 1" = 20'</td> </td>	Date: 3/20/2024 8:10 AM <td>Scale: 1" = 20'</td>	Scale: 1" = 20'
			X-8