

Madison, Wisconsin

CITY OF MADISON

CITY ENGINEERING DIVISION

DEPARTMENT OF PUBLIC WORKS

PLAN OF PROPOSED IMPROVEMENT

INDEX OF SHEETS

SHEET NO. D1	GENERAL NOTES
SHEET NO. U1	UTILITY PLAN
NO MAINTENANCE PLAN REQUIRED	

PUBLIC IMPROVEMENT PROJECT APPROVED

JANUARY 4 2022

BY THE COMMON COUNCIL OF MADISON, WISCONSIN

PUBLIC IMPROVEMENT DESIGN APPROVED BY:

W. Greg Fries

Oct 19, 2022

City Engineer

Date

WATER DESIGNED BY:

LATERAL ONLY

2012 WINNEBAGO STREET UTILITY ONLY

CITY PROJECT NO. 13898
CONTRACT NO. 9121

PROJECT LOCATION



PLOT SCALE: 1:1_XREF

PLOT NAME: ---

REV. DATE: 10/19/2022 12:18 PM

ORIGINATOR: CITY_OF_MADISON

GENERAL NOTES:

1. THE DEVELOPER SHALL REPLACE ALL CURB & GUTTER AND SIDEWALK THAT IS DAMAGED OR DETERMINED TO BE IN UNSATISFACTORY CONDITION.
2. PAVEMENT SAWCUTS AND FINAL PAVEMENT PATCHING LIMITS SHALL BE AS DIRECTED BY THE CITY CONSTRUCTION ENGINEER. SAWCUTS AND LIMITS SHOWN ON THE PLAN ARE BASED ON ANTICIPATED DISTURBANCE AND THE PATCHING CRITERIA BUT SHALL BE CONSIDERED APPROXIMATE. ALL PAVEMENT PATCHING SHALL BE PER THE CITY'S PATCHING CRITERIA.
3. ANY INFORMATION SHOWN ON THIS PLAN, WHICH IS NOT PART OF THIS RIGHT-OF-WAY PROJECT, IS PRELIMINARY AND NOT FOR CONSTRUCTION.

TRAFFIC CONTROL NOTES:

1. THE CONTRACTOR SHALL SUBMIT A TRAFFIC CONTROL PLAN FOR REVIEW TO THE CITY TRAFFIC ENGINEERING DIVISION AT LEAST 10 WORKING DAYS PRIOR TO WORK BEGINNING. THE TRAFFIC CONTROL PLAN SHALL COMPLY WITH ALL MUTCD REQUIREMENTS. WORK SHALL NOT PROCEED UNTIL THE TRAFFIC CONTROL PLAN HAS BEEN APPROVED. THE TRAFFIC CONTROL PLAN MAY INCLUDE BUT IS NOT LIMITED TO: LANE CLOSURE RESTRICTIONS, PEAK HOUR WORKING RESTRICTIONS, ACCESS REQUIREMENTS, ETC. THE CONTRACTOR SHALL BE RESPONSIBLE FOR PHASING WORK AS NECESSARY TO MEET THE REQUIREMENTS OF THE APPROVED TRAFFIC CONTROL PLAN.

STREET DESIGN NOTES:

1. ALL DISTURBED TERRACE AREAS SHALL BE RESTORED WITH 6-INCHES OF TOP SOIL AND SEED UNLESS DIRECTED OTHERWISE ON THE PLAN OR BY THE CITY CONSTRUCTION ENGINEER.
2. ALL GUTTERS SHALL DRAIN WITH A MINIMUM GRADE OF 0.5% TOWARD STORM SEWER INLETS.
3. TYPICAL PAVEMENT CROSS SLOPES SHALL BE 2% AND TERRACES SHALL SLOPE AT A 4% GRADE TOWARD THE GUTTER.

UTILITY NOTES:

1. RELOCATION OR ADJUSTING OF PRIVATE UTILITY FACILITIES, SUCH AS POLES, PEDESTALS, BOXES, STRUCTURES, CASTINGS OR HANDHOLES, WITH PRIVATE UTILITY COMPANIES.
2. PLANS SHALL CONFORM TO CITY OF MADISON STANDARD SPECIFICATIONS.
3. ALL UTILITY VERIFICATIONS AND ACCURACY OF THE DRAWINGS ARE THE RESPONSIBILITY OF THE DEVELOPER. ANY CONFLICTS THAT ARISE FROM MISSING OR ERRONEOUS INFORMATION WILL BE AT THE EXPENSE OF THE DEVELOPER. NO PRECAST STRUCTURES WILL BE APPROVED FOR STORM OR SANITARY SEWER UNTIL ALL POTENTIAL UTILITY CONFLICTS ARE RESOLVED.

FORESTRY NOTES:

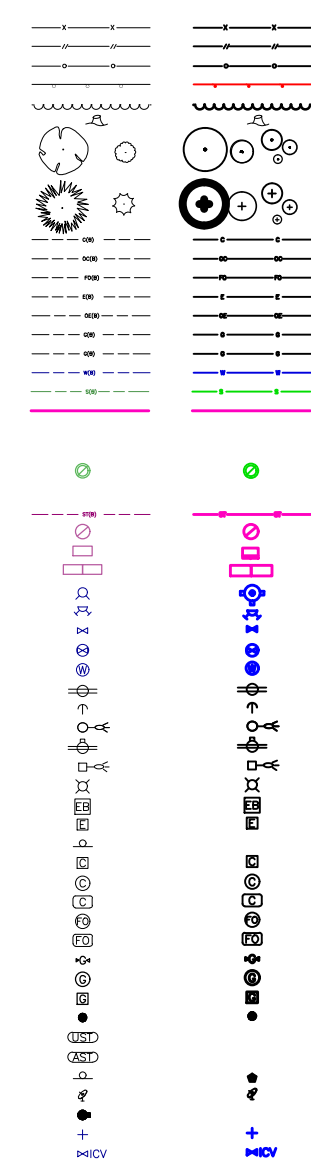
1. AS DEFINED BY THE SECTION 107.13 OF CITY OF MADISON STANDARD SPECIFICATIONS FOR PUBLIC WORKS CONSTRUCTION: NO EXCAVATION IS PERMITTED WITHIN 5 FEET OF THE TRUNK OF THE STREET TREE OR WHEN CUTTING ROOTS OVER 3 INCHES IN DIAMETER. IF EXCAVATION IS NECESSARY, THE CONTRACTOR SHALL CONTACT MADISON CITY FORESTRY (266-4816) PRIOR TO EXCAVATION. CITY OF MADISON FORESTRY PERSONNEL SHALL ASSESS THE IMPACT TO THE TREE AND TO ITS ROOT SYSTEM PRIOR TO WORK COMMENCING. TREE PROTECTION SPECIFICATIONS CAN BE FOUND ON THE FOLLOWING WEBSITE: [HTTPS://WWW.CITYOFMADISON.COM/BUSINESS/PW/SPECS.CFM](https://www.cityofmadison.com/business/pw/specs.cfm)
2. CONTRACTOR SHALL TAKE PRECAUTIONS DURING CONSTRUCTION TO NOT DISFIGURE, SCAR, OR IMPAIR THE HEALTH OF ANY STREET TREE. CONTRACTOR SHALL OPERATE EQUIPMENT IN A MANNER AS TO NOT DAMAGE THE BRANCHES OF THE STREET TREE(S)- THIS MAY REQUIRE USING SMALLER EQUIPMENT AND LOADING AND UNLOADING MATERIALS IN A DESIGNATED SPACE AWAY FROM TREES ON THE CONSTRUCTION SITE. ANY DAMAGE OR INJURY TO EXISTING STREET TREES (EITHER ABOVE OR BELOW GROUND) SHALL BE REPORTED IMMEDIATELY TO CITY FORESTRY AT 266-4816. PENALTIES AND REMEDIATION SHALL BE REQUIRED. SECTION 107.13(G) OF CITY OF MADISON STANDARD SPECIFICATIONS FOR PUBLIC WORKS CONSTRUCTION ADDRESSES SOIL COMPACTION NEAR STREET TREES AND SHALL BE FOLLOWED BY CONTRACTOR. THE STORAGE OF PARKED VEHICLES, CONSTRUCTION EQUIPMENT, BUILDING MATERIALS, REFUSE, EXCAVATED SPOILS OR DUMPING OF POISONOUS MATERIALS ON OR AROUND TREES AND ROOTS WITHIN FIVE (5) FEET OF THE TREE OR WITHIN THE PROTECTION ZONE IS PROHIBITED.
3. CALL CITY FORESTRY 608-266-4816 BEFORE EXCAVATION FOR SIDEWALK INSTALLATION.

LEGEND

FEATURES

- Spot Elevation
- Contour Elevation
- Fence (Barbed, Field, Hog)
- Fence (Chain Link)
- Fence (Wood)
- Fence (Silt)
- Tree Line
- Tree Stump
- Deciduous Tree \ Shrub
- Coniferous Tree \ Shrub
- Communication
- Overhead Communication
- Fiber Optic
- Underground Electric
- Overhead Electric
- Gas Main
- High Pressure Gas Main
- Water Main
- Sanitary Sewer
- Duct Bank
- Test Hole Location for SUE w/ID
- Sanitary Manhole
- Storm Sewer
- Storm Manhole
- Single Storm Sewer Intake
- Double Storm Sewer Intake
- Fire Hydrant
- Fire Hydrant on Building
- Water Main Valve
- Water Service Valve
- Well
- Utility Pole
- Guy Anchor
- Utility Pole with Light
- Utility Pole with Transformer
- Street Light
- Yard Light
- Electric Box
- Electric Transformer
- Traffic Sign
- Communication Pedestal
- Communication Manhole
- Communication Handhole
- Fiber Optic Manhole
- Fiber Optic Handhole
- Gas Valve
- Gas Manhole
- Gas Apparatus
- Fence Post or Guard Post
- Underground Storage Tank
- Above Ground Storage Tank
- Sign
- Satellite Dish
- Mailbox
- Sprinkler Head
- Irrigation Control Valve

EXISTING PROPOSED



####

05/09/22	BCA	SITE UPDATES	02/03/22	BCA	SITE UPDATES	01/04/22	BCA	UNDERGROUND PARKING ELEVATION
MARK			REVISION			DATE		
Engineer: BCA			Checked By: MLC			Scale: 1" = ##'		
Technician: TECH			Date: 07-20-2021			T-R-S:		
Project No: 121.0715.30								Sheet D-1

2012 WINNEBAGO STREET

CONTRACT NO: 9121
PROJECT NO: 13898

GENERAL NOTES

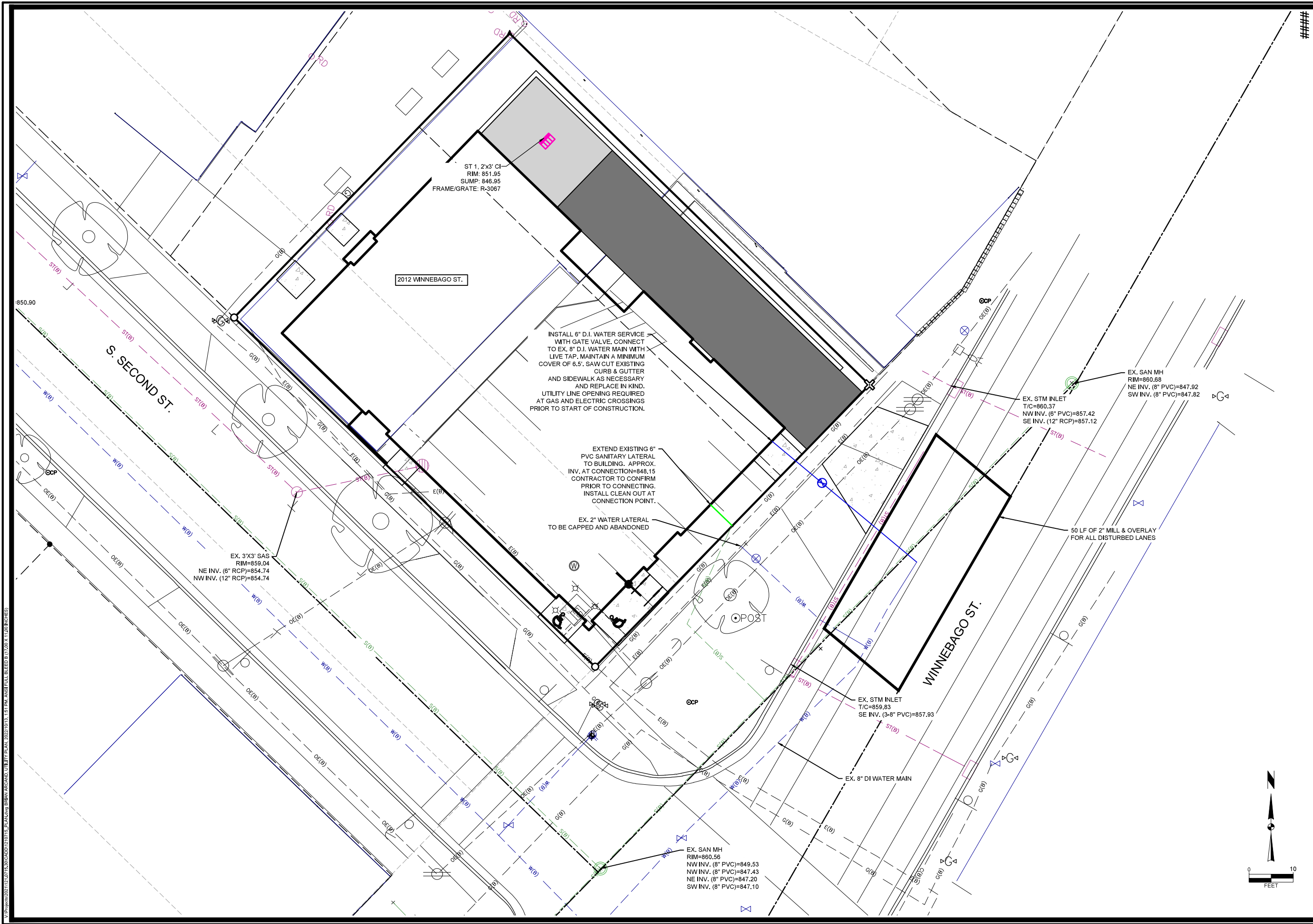
CITY OF MADISON, DANE COUNTY, WI

SNYDER & ASSOCIATES, INC.

5010 VOGES ROAD
MADISON, WISCONSIN 53718
608-638-0444 | www.snyder-associates.com



D:\proj\1210715\2021\1210715_2021\1210715_GENERAL NOTES_20210715_13898.dwg (BRUNY, ARCADIO) GENERAL NOTES_20210715_13898.dwg (BRUNY, ARCADIO) DATE PLOTTED: 07/20/2021 10:11:13 AM ANSI FULL BLEED B (11.000 X 17.000) SHEET



V:\projects\2021\121.0715.30\121.0715.30.dwg 12/15/2021 11:13 AM ANSI FULL BLEED B1 (100 X 120 INCHES)

####

MARK	REVISION	DATE	BY
UNDERGROUND PARKING ELEVATION	07/04/22	BCA	
SITE UPDATES	02/03/22	BCA	
SITE UPDATES	05/09/22	BCA	
Engineer: BCA	Checked By: MLC	Scale: 1" = 10'	
Technician: TECH	Date: 07-20-2021	T-R-S:	

Project No: 121.0715.30
Sheet U-1

2012 WINNEBAGO STREET
UTILITY PLAN

CITY OF MADISON, DANE COUNTY, WI

SNYDER & ASSOCIATES, INC.
5010 VOGES ROAD
MADISON, WISCONSIN 53718
608-838-0444 | www.snyder-associates.com

Project No: 121.0715.30
Sheet U-1

ST 1, 2'x3' CI
RIM: 851.95
SUMP: 846.95
FRAME/GRATE: R-3067

INSTALL 6" D.I. WATER SERVICE WITH GATE VALVE. CONNECT TO EX. 8" D.I. WATER MAIN WITH LIVE TAP. MAINTAIN A MINIMUM COVER OF 6.5'. SAW CUT EXISTING CURB & GUTTER AND SIDEWALK AS NECESSARY AND REPLACE IN KIND. UTILITY LINE OPENING REQUIRED AT GAS AND ELECTRIC CROSSINGS PRIOR TO START OF CONSTRUCTION.

EXTEND EXISTING 6" PVC SANITARY LATERAL TO BUILDING. APPROX. INV. AT CONNECTION=848.15 CONTRACTOR TO CONFIRM PRIOR TO CONNECTING. INSTALL CLEAN OUT AT CONNECTION POINT.

EX. 2" WATER LATERAL TO BE CAPPED AND ABANDONED

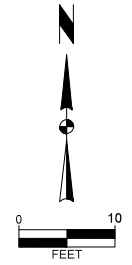
EX. 3'x3' SAS
RIM=859.04
NE INV. (8" RCP)=854.74
NW INV. (12" RCP)=854.74

EX. STM INLET
T/C=860.37
NW INV. (6" PVC)=857.42
SE INV. (12" RCP)=857.12

EX. SAN MH
RIM=860.68
NE INV. (8" PVC)=847.92
SW INV. (8" PVC)=847.82

EX. STM INLET
T/C=859.83
SE INV. (3-8" PVC)=857.93

EX. SAN MH
RIM=860.56
NW INV. (8" PVC)=849.53
NW INV. (8" PVC)=847.43
NE INV. (8" PVC)=847.20
SW INV. (8" PVC)=847.10




Contract 9121, 2012 Winnebago Street Utility Only

Final Audit Report


2022-10-19

Created:	2022-10-19
By:	ENG- Johanna Johnson (jjohnson@cityofmadison.com)
Status:	Signed
Transaction ID:	CBJCHBCAABAA37mg0znzgCCWTngFa0BeLwICXw8244ZT


"Contract 9121, 2012 Winnebago Street Utility Only" History

 Document created by ENG- Johanna Johnson (jjohnson@cityofmadison.com)


2022-10-19 - 8:19:54 PM GMT- IP address: 204.147.0.15

 Document emailed to ENG- Greg Fries (gfries@cityofmadison.com) for signature

2022-10-19 - 8:21:26 PM GMT

 Email viewed by ENG- Greg Fries (gfries@cityofmadison.com)

2022-10-19 - 8:41:31 PM GMT- IP address: 204.147.0.15

 Document e-signed by ENG- Greg Fries (gfries@cityofmadison.com)

Signature Date: 2022-10-19 - 8:42:17 PM GMT - Time Source: server- IP address: 204.147.0.15

 Agreement completed.

2022-10-19 - 8:42:17 PM GMT