



Madison, Wisconsin

CITY OF MADISON  
CITY ENGINEERING DIVISION  
DEPARTMENT OF PUBLIC WORKS  
PLAN OF PROPOSED IMPROVEMENT

INDEX OF SHEETS

SHEET NO.	D1	STANDARD NOTES & TYPICAL SECTIONS
SHEET NO.	P1-P2	PLAN & PROFILE
SHEET NO.	U1	UTILITY PLAN

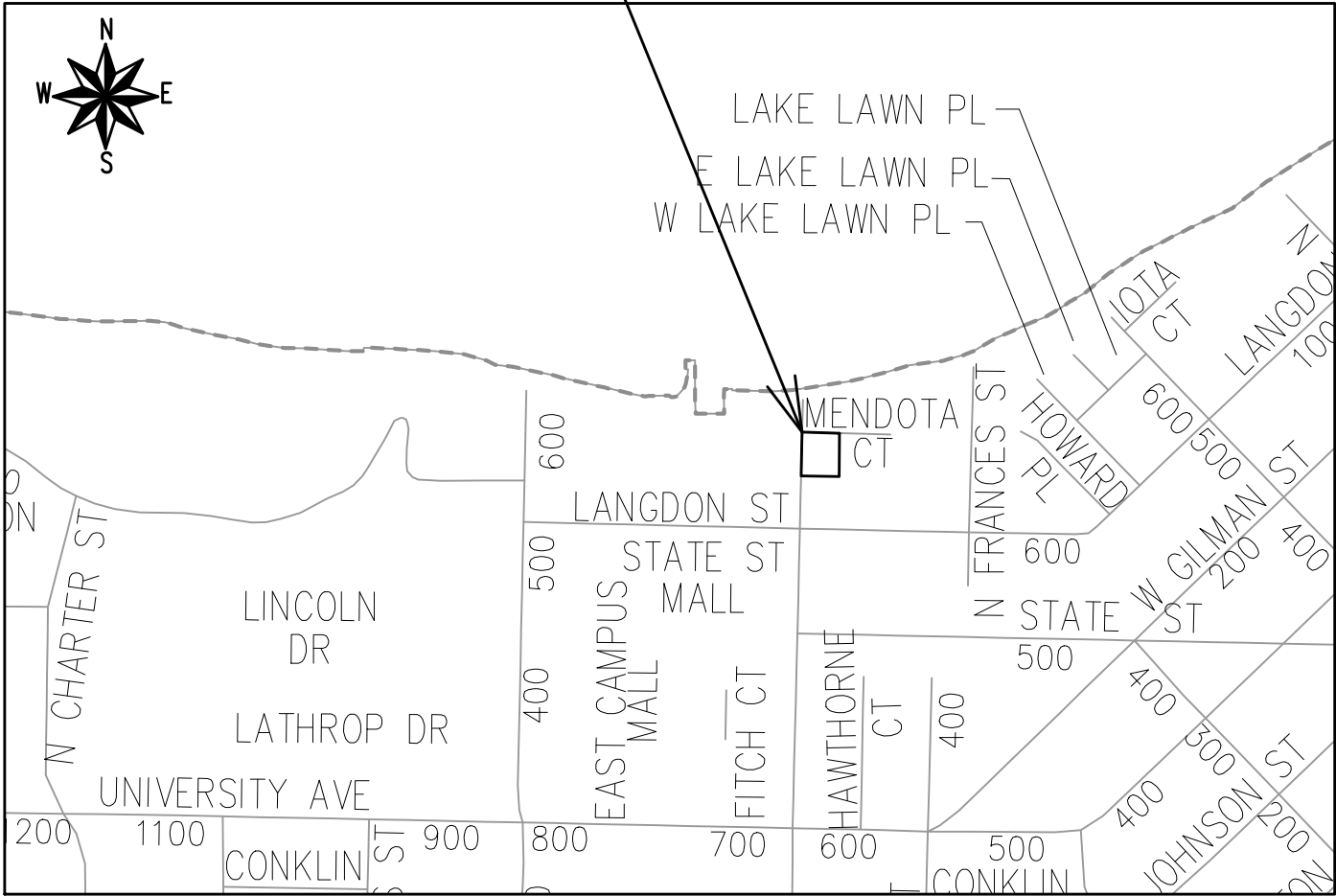
NO MAINTENANCE PLAN REQUIRED

REVISED 4/26/23

619 - 621 N LAKE STREET

CITY PROJECT NO. 13990  
CONTRACT NO. 9133

PROJECT  
LOCATION



PUBLIC IMPROVEMENT PROJECT  
APPROVED

MARCH 1, 2022

BY THE COMMON COUNCIL  
OF MADISON, WISCONSIN

PUBLIC IMPROVEMENT DESIGN  
APPROVED BY:

*N. Greg Fries*

Sep 8, 2022

City Engineer

Date

STREET  
DESIGNED BY:

SEE  
INDIVIDUAL  
SHEET

SANITARY SEWER  
DESIGNED BY:

SEE  
INDIVIDUAL  
SHEET

STORM SEWER  
DESIGNED BY:

SEE  
INDIVIDUAL  
SHEET

WATER  
DESIGNED BY:

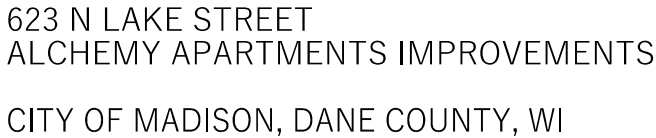
SEE  
INDIVIDUAL  
SHEET

PLOT SCALE: 1"=1' XREF

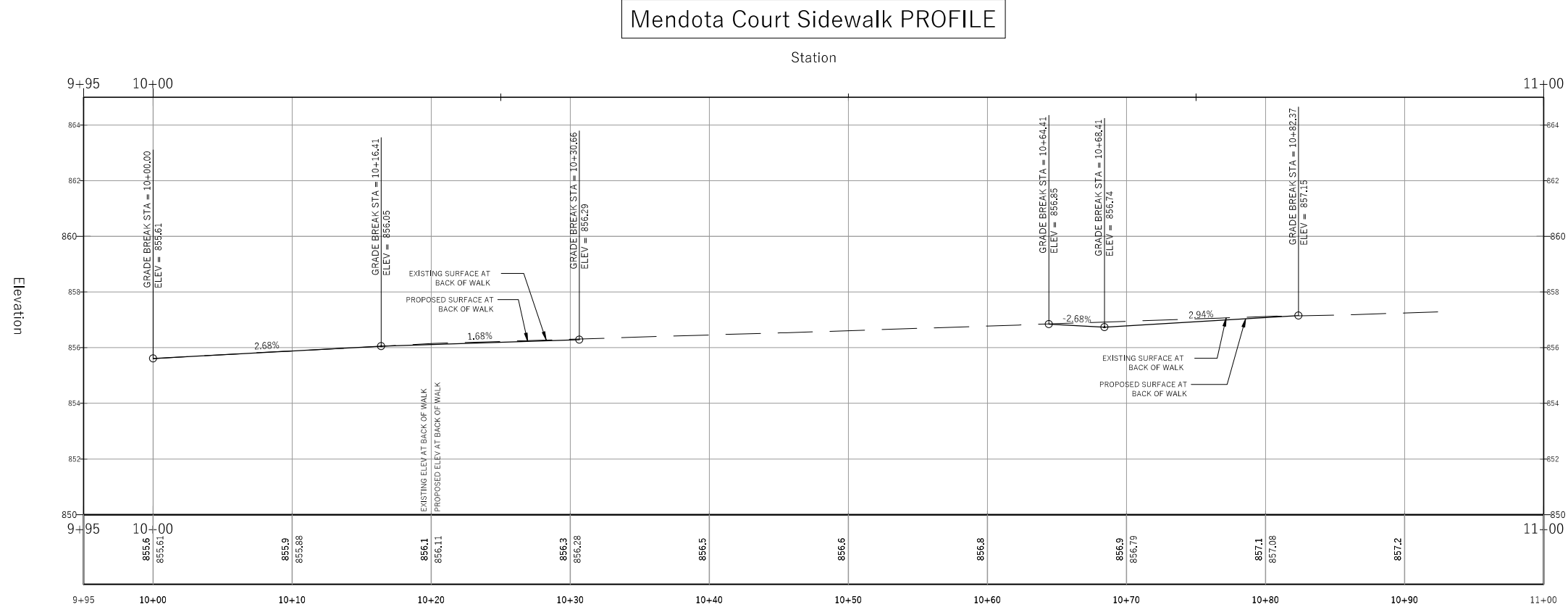
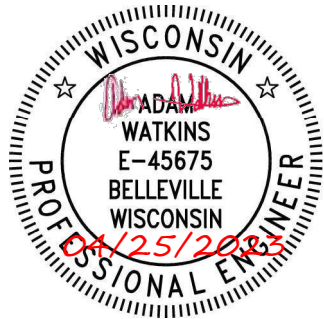
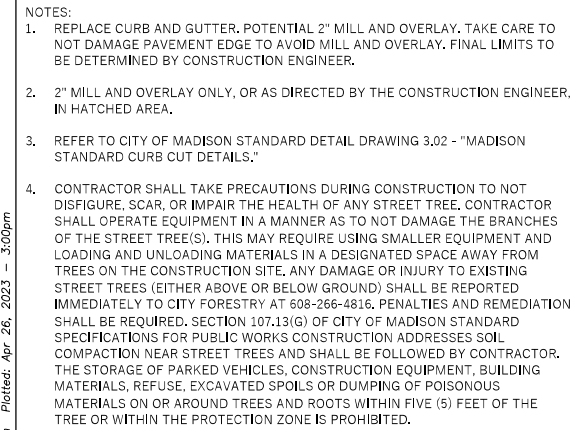
PLOT NAME: ----

REV. DATE: 8/24/2022 7:22 AM

ORIGINATOR: CITY\_OF\_MADISON

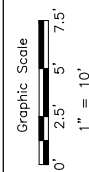


Wyser Number	19-0661
Set Type	CONSTRUCTION
Date Issued	08/15/2022
Sheet Number	D-1



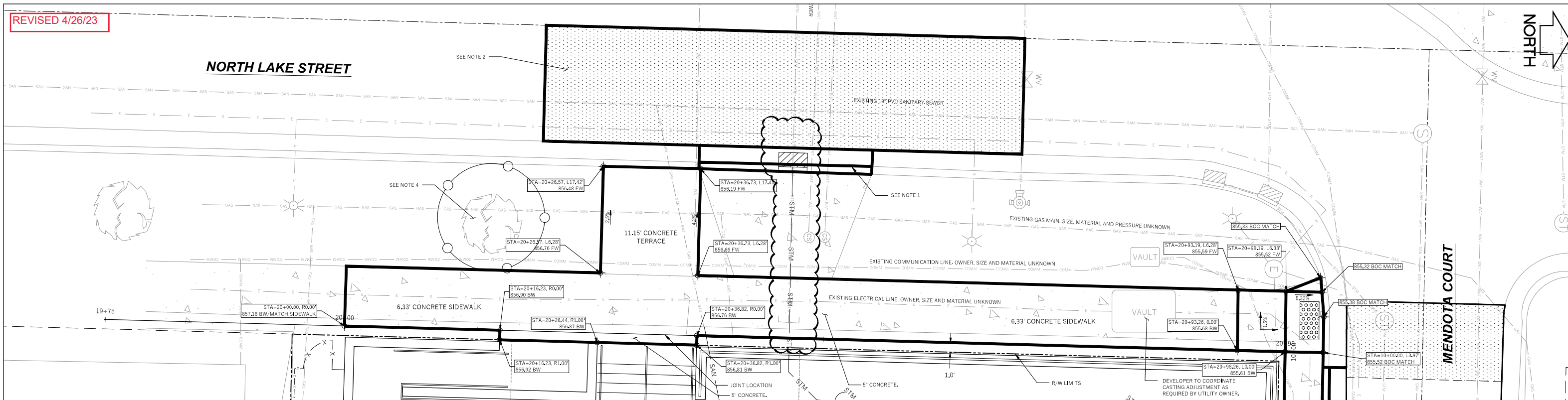
WYSER  
ENGINEERING

**DIGGERS  HOTLINE**  
Toll Free (800) 242-8511 -or- 811  
Hearing Impaired TDD (800) 542-2289  
[www.DiggersHotline.com](http://www.DiggersHotline.com)



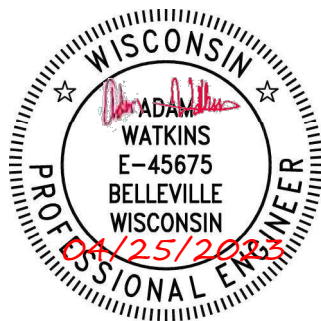
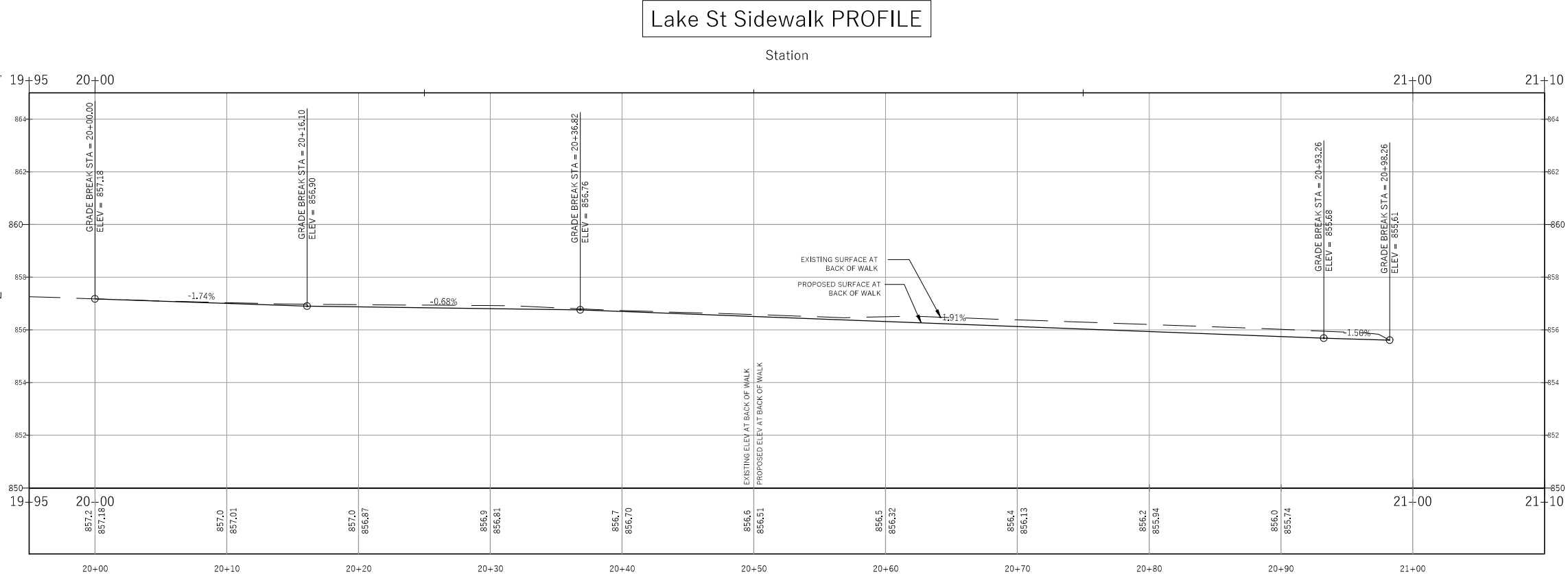
Revisions:	No.	Date:	Description:	Wyser Number	19-0661
	1	04/25/2023	Utility Updates	Set Type	CONSTRUCTION
				Date Issued	08/15/2022
				Sheet Number	P-1





## NOTES

1. REPLACE CURB AND GUTTER, POTENTIAL 2" MILL AND OVERLAY. TAKE CARE TO NOT DAMAGE PAVEMENT EDGE TO AVOID MILL AND OVERLAY. FINAL LIMITS TO BE DETERMINED BY CONSTRUCTION ENGINEER.
2. 2" MILL AND OVERLAY ONLY, OR AS DIRECTED BY THE CONSTRUCTION ENGINEER IN HATCHED AREA.
3. CONTRACTOR SHALL CONTACT CITY FORESTRY AT 608-266-4816 BEFORE EXCAVATION FOR SIDEWALK INSTALLATION.
4. ON THIS PROJECT, STREET TREE PROTECTION ZONE FENCING IS REQUIRED. THE FENCING SHALL BE ERECTED BEFORE THE DEMOLITION, GRADING OR CONSTRUCTION BEGINS. THE FENCE SHALL INCLUDE THE ENTIRE WIDTH OF TERRACE AND, EXTEND AT LEAST 5 FEET ON BOTH SIDES OF THE OUTSIDE EDGE OF THE TREE TRUNK. DO NOT REMOVE THE FENCING TO ALLOW FOR DELIVERIES OR EQUIPMENT ACCESS THROUGH THE TREE PROTECTION ZONE.
5. CONTRACTOR SHALL TAKE PRECAUTIONS DURING CONSTRUCTION TO NOT DISFIGURE, SCAR, OR IMPAIR THE HEALTH OF ANY STREET TREE. CONTRACTOR SHALL OPERATE EQUIPMENT IN A MANNER AS TO NOT DAMAGE THE BRANCHES OF THE STREET TREE(S). THIS MAY REQUIRE USING SMALLER EQUIPMENT AND LOADING AND UNLOADING MATERIALS IN A DESIGNATED SPACE AWAY FROM TREES ON THE CONSTRUCTION SITE. ANY DAMAGE OR INJURY TO EXISTING STREET TREES (EITHER ABOVE OR BELOW GROUND) SHALL BE REPORTED IMMEDIATELY TO CITY FORESTRY AT 608-266-4816. PENALTIES AND REMEDIATION SHALL BE REQUIRED. SECTION 107.13(G) OF CITY OF MADISON STANDARD SPECIFICATIONS FOR PUBLIC WORKS CONSTRUCTION ADDRESSES SOIL COMPACTION NEAR STREET TREES AND SHALL BE FOLLOWED BY CONTRACTOR. THE STORAGE OF PARKED VEHICLES, CONSTRUCTION EQUIPMENT, BUILDING MATERIALS, REFUSE, EXCAVATED SPOILS OR DUMPING OF POISONOUS MATERIALS ON OR AROUND TREES AND ROOTS WITHIN FIVE (5) FEET OF THE TREE OR WITHIN THE PROTECTION ZONE IS PROHIBITED.



623 N LAKE STREET  
ALCHEMY APARTMENTS IMPROVEMENTS

CITY OF MADISON, DANE COUNTY, WI

Sheet Title:

PLAN AND PROFILE  
NORTH LAKE STREET SIDEWALK  
CITY OF MADISON PROJECT NO. 13990, CONTRACT NO. 9133

623 NORTH LAKE STREET  
MADISON, WI 53703



**Toll Free (800) 242-8511 -or- 811**  
Hearing Impaired TDD (800) 542-2289  
**www.DiggersHotline.com**

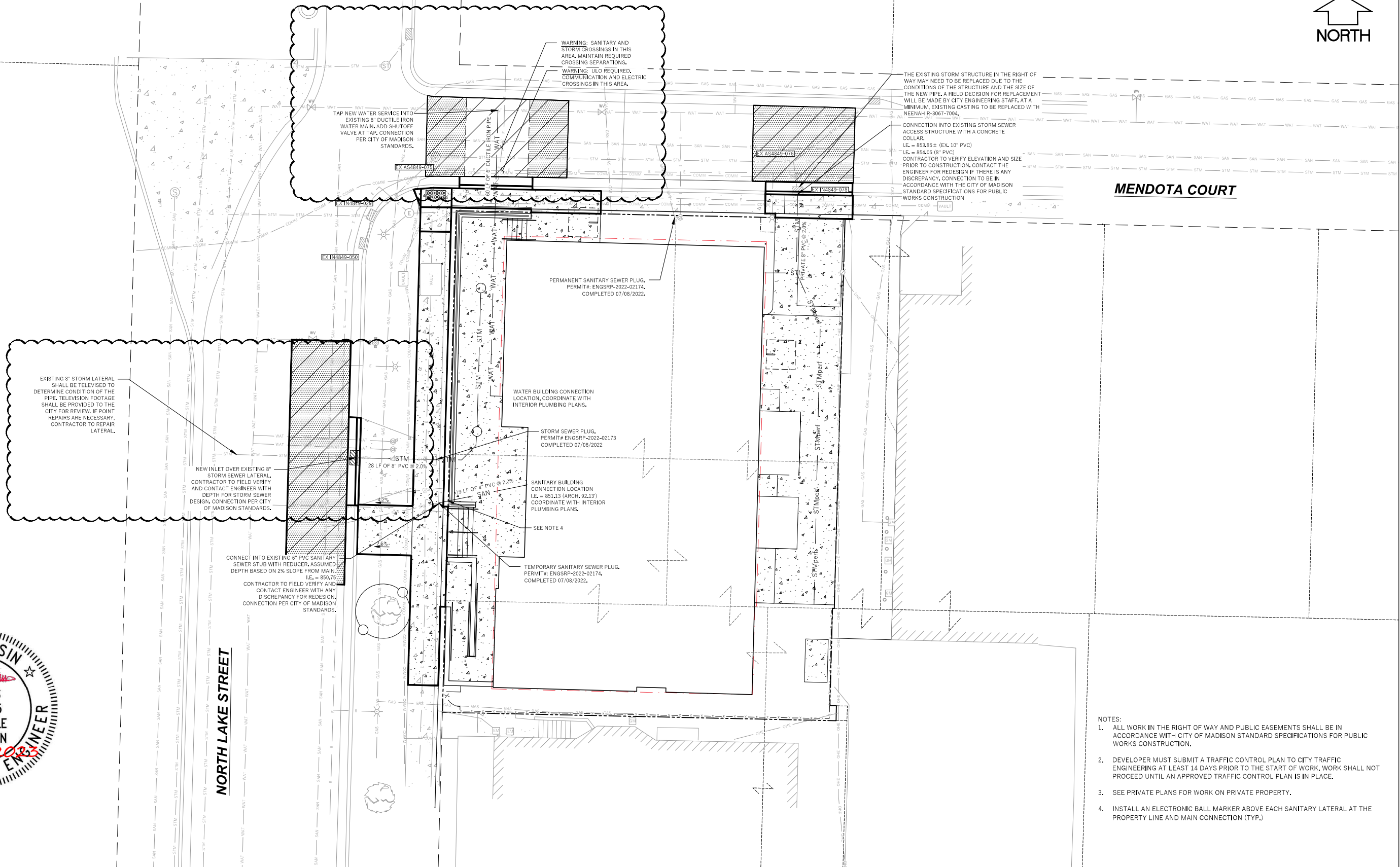
Graphic Scale

0' 2.5' 5' 7.5' 10'

1" = 10'

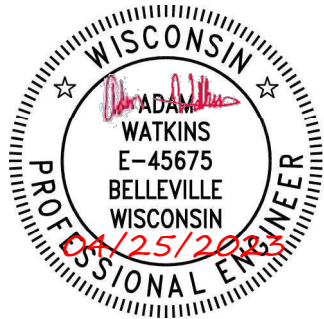
[illegible]

Wyser Number	19-0661
Set Type	CONSTRUCTION
Date Issued	08/15/2022
Sheet Number	P-2



MENDOTA COURT

NORTH LAKE STREET

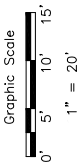


- NOTES:
1. ALL WORK IN THE RIGHT OF WAY AND PUBLIC EASEMENTS SHALL BE IN ACCORDANCE WITH CITY OF MADISON STANDARD SPECIFICATIONS FOR PUBLIC WORKS CONSTRUCTION.
  2. DEVELOPER MUST SUBMIT A TRAFFIC CONTROL PLAN TO CITY TRAFFIC ENGINEERING AT LEAST 14 DAYS PRIOR TO THE START OF WORK. WORK SHALL NOT PROCEED UNTIL AN APPROVED TRAFFIC CONTROL PLAN IS IN PLACE.
  3. SEE PRIVATE PLANS FOR WORK ON PRIVATE PROPERTY.
  4. INSTALL AN ELECTRONIC BALL MARKER ABOVE EACH SANITARY LATERAL AT THE PROPERTY LINE AND MAIN CONNECTION (TYP.)

623 N LAKE STREET  
ALCHEMY APARTMENTS IMPROVEMENTS  
CITY OF MADISON, DANE COUNTY, WI

Sheet Title:  
UTILITY PLAN  
CITY OF MADISON PROJECT NO. 13990, CONTRACT NO. 9133

623 NORTH LAKE STREET  
MADISON, WI 53703



Revisions:		No.	Date:	Description:					Wyser Number	19-0661
		No.	Date:	Description:					Set Type	CONSTRUCTION
		No.	Date:	Description:					Date Issued	08/15/2022
		No.	Date:	Description:					Sheet Number	U-1