



Madison, Wisconsin

INDEX OF SHEETS

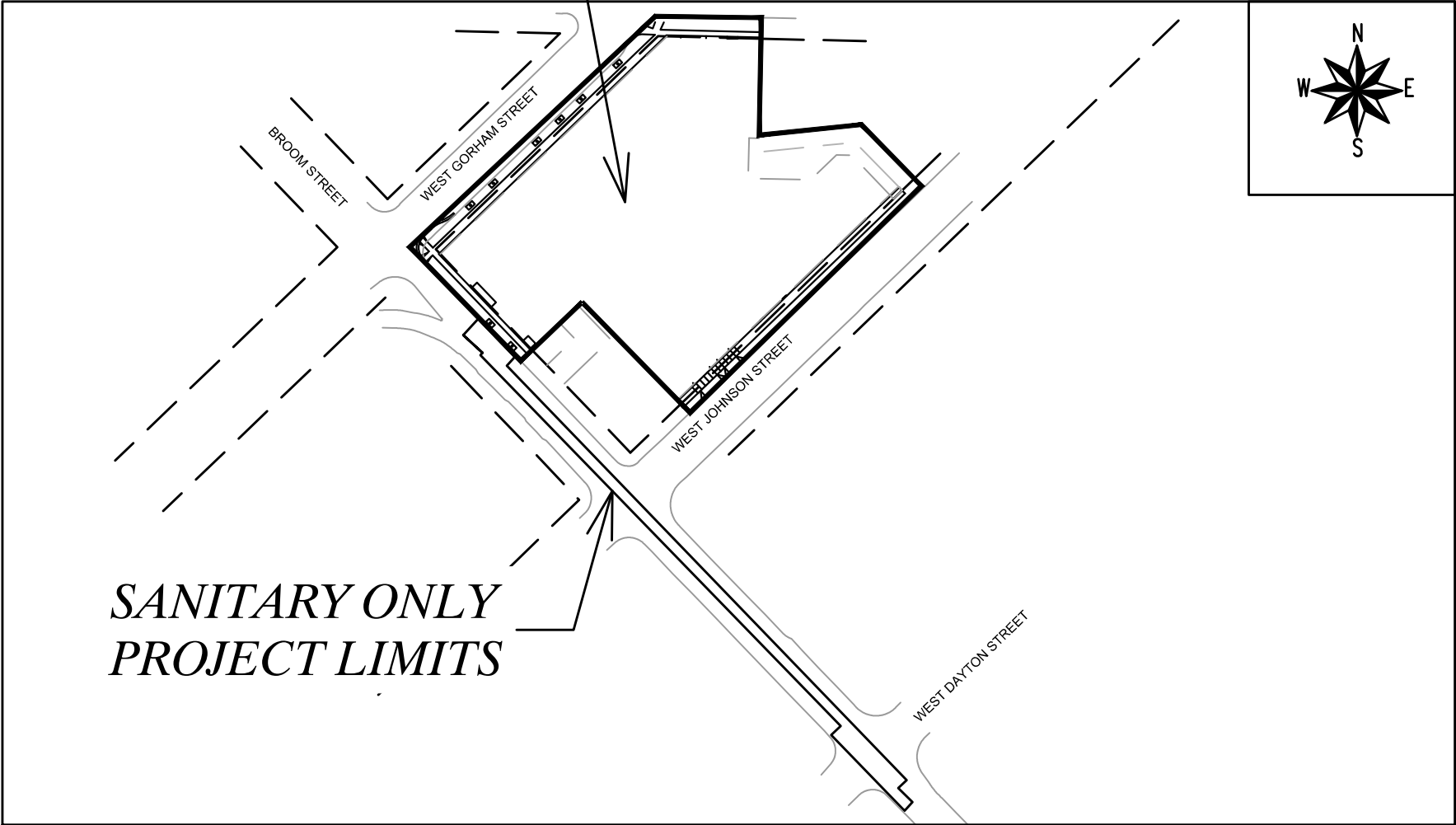
SHEET NO. C600 - C603      SANITARY PLAN & PROFILE  
NO MAINTENANCE PLAN

CITY OF MADISON  
CITY ENGINEERING DIVISION  
DEPARTMENT OF PUBLIC WORKS  
PLAN OF PROPOSED IMPROVEMENT

339 W. GORHAM STREET  
- UTILITIES ONLY

PROJECT  
LOCATION

CITY PROJECT NO. 14001  
CONTRACT NO. 9140



PUBLIC IMPROVEMENT PROJECT  
APPROVED

FEBRUARY 1, 2022

BY THE COMMON COUNCIL  
OF MADISON, WISCONSIN

PUBLIC IMPROVEMENT DESIGN  
APPROVED BY:

*N. Greg Fries*

May 27, 2022

City Engineer

Date

SANITARY SEWER  
DESIGNED BY:

SEE INDIVIDUAL  
SHEETS FOR  
STAMP

WATER  
DESIGNED BY:

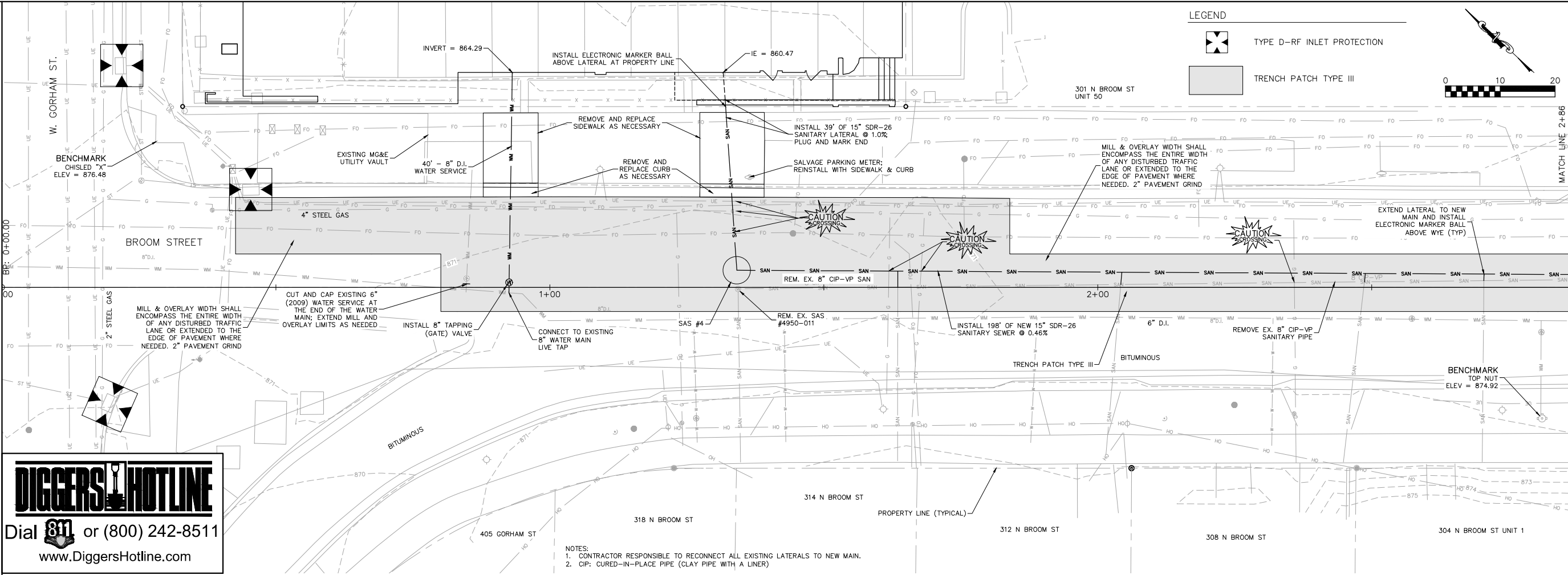
LATERAL  
ONLY

PLOT SCALE: 1"=0' = 1"=0" XREF

PLOT NAME: -----

REV. DATE: 5/26/2022 11:25 AM

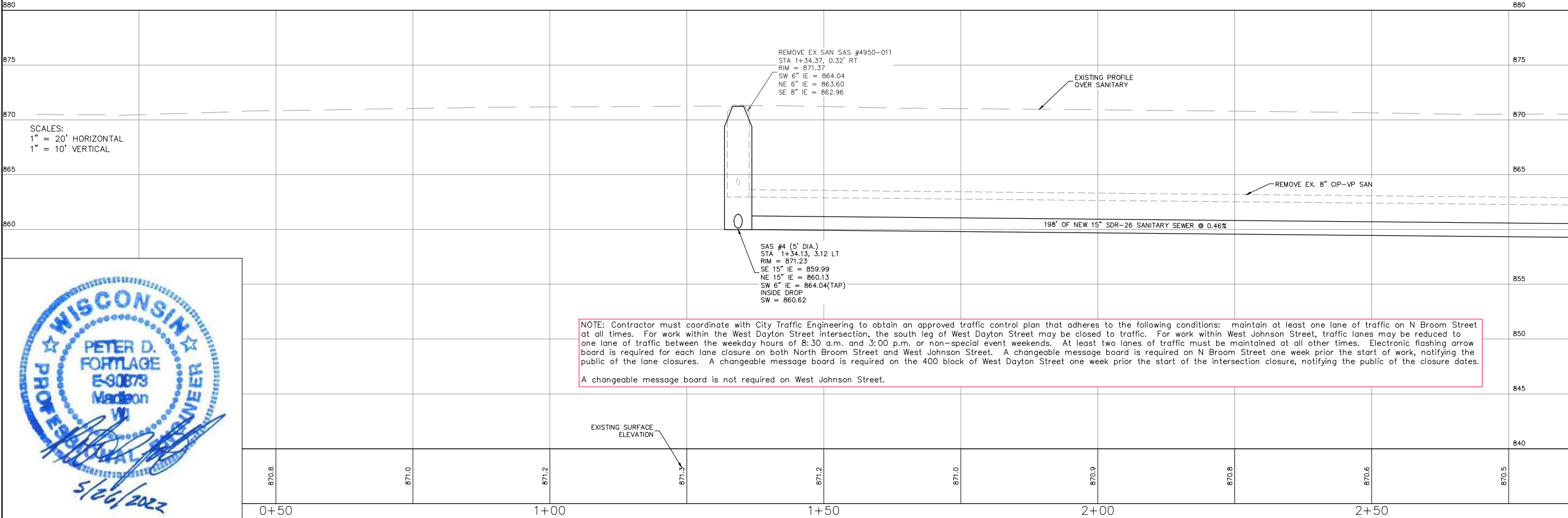
ORIGINATOR: CITY\_OF\_MADISON



**DIGGERS! HOTLINE**

Dial **811** or (800) 242-8511

www.DiggersHotline.com



**Burse**  
Surveying and Engineering, Inc.

2801 International Lane, Suite 101  
Madison, WI 53704  
Phone: 608-250-9263  
Fax: 608-250-9266  
e-mail: Mause@BSE-INC.net  
www.burseurveyeng.com

APPROVALS

PROJECT ENG.	MLB	DRH	DRH	PDF	MLB

**oLiv Madison**  
339 W. Gorham Street  
Madison, WI 53703

**Antunovich Associates**  
224 West Huron Street, Suite 7E  
Chicago, IL 60654

PROJECT #: BSE2329-AA  
PLOT DATE: 05/26/2022

REVISION DATES:

NO.	DATE	DESCRIPTION

ISSUE DATES:

DATE
05/12/2022
05/23/2022
05/26/2022

SANITARY SEWER PLAN & PROFILE

This document contains confidential or proprietary information of Burse Surveying and Engineering, Inc. Neither the document nor the information herein is to be reproduced, distributed, used or disclosed, either in whole or in part, except as specifically authorized by Burse Surveying and Engineering, Inc.

DRAWING NUMBER

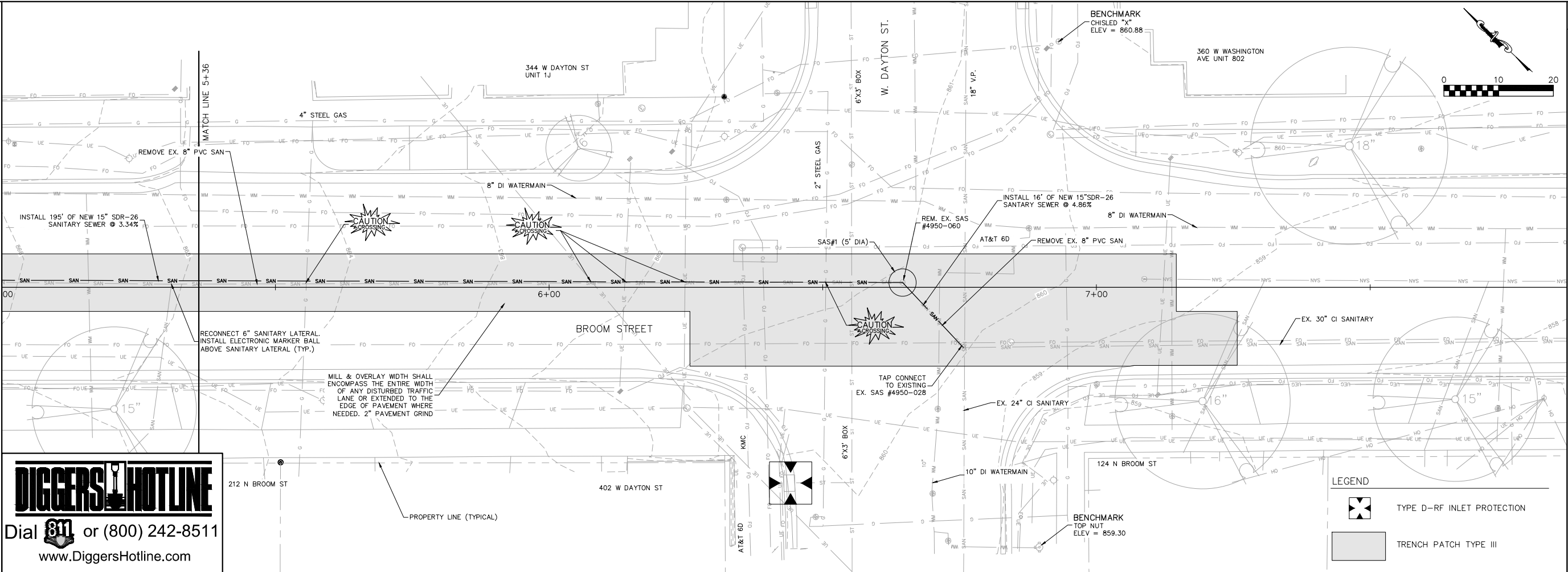
**C-601**

Printed: May 26, 2022 - 12:11pm Printed By: Peter

M:\BSE2329\dwg\Engineering\Broom Street P&P.dwg



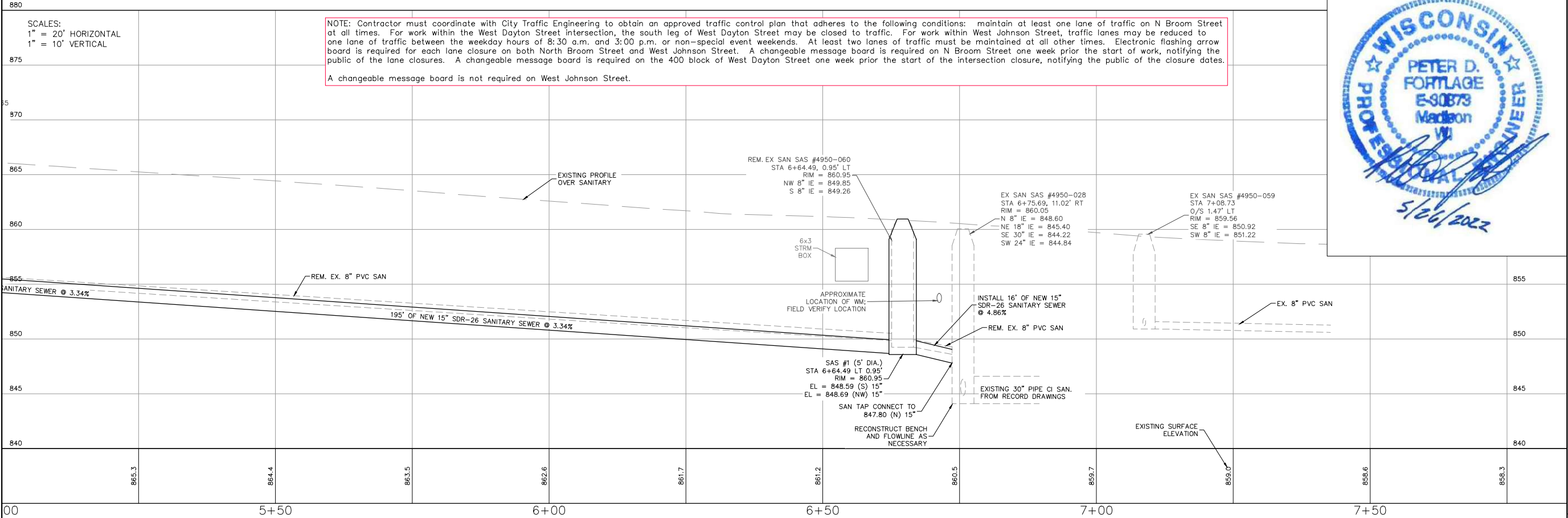




**DIGGERSHOTLINE**

Dial 811 or (800) 242-8511

www.DiggersHotline.com



**WISCONSIN**

**PETER D. FORTLAGE**

**PROFESSIONAL ENGINEER**

**5/26/2022**

**Burse**

Surveying and Engineering, Inc.

2801 International Lane, Suite 101  
Madison, WI 53704  
Phone: 608-250-9263  
Fax: 608-250-9266  
e-mail: [Murse@BSE-INC.net](mailto:Murse@BSE-INC.net)  
[www.burseengineering.com](http://www.burseengineering.com)

APPROVALS	MLB	DRH	DRH	PDF	MLB
PROJECT ENG.	PROJECT ENG.	PROJECT ENG.	PROJECT ENG.	PROJECT ENG.	PROJECT ENG.
PROJECT ENG.	PROJECT ENG.	PROJECT ENG.	PROJECT ENG.	PROJECT ENG.	PROJECT ENG.

**oLiv Madison**

339 W. Gorham Street  
Madison, WI 53703

**Antunovich Associates**

224 West Huron Street, Suite 7E  
Chicago, IL 60654

PROJECT #:	BSE2329-AA
PLOT DATE:	05/26/2022
REVISION DATES:	

ISSUE DATES:	05/12/2022
	05/23/2022
	05/26/2022

SANITARY SEWER  
PLAN & PROFILE

This document contains confidential or proprietary information of Burse Surveying and Engineering, Inc. Neither the document nor the information herein is to be reproduced, distributed, used or disclosed, either in whole or in part, except as specifically authorized by Burse Surveying and Engineering, Inc.

DRAWING NUMBER

**C-603**