

Madison, Wisconsin

INDEX OF SHEETS

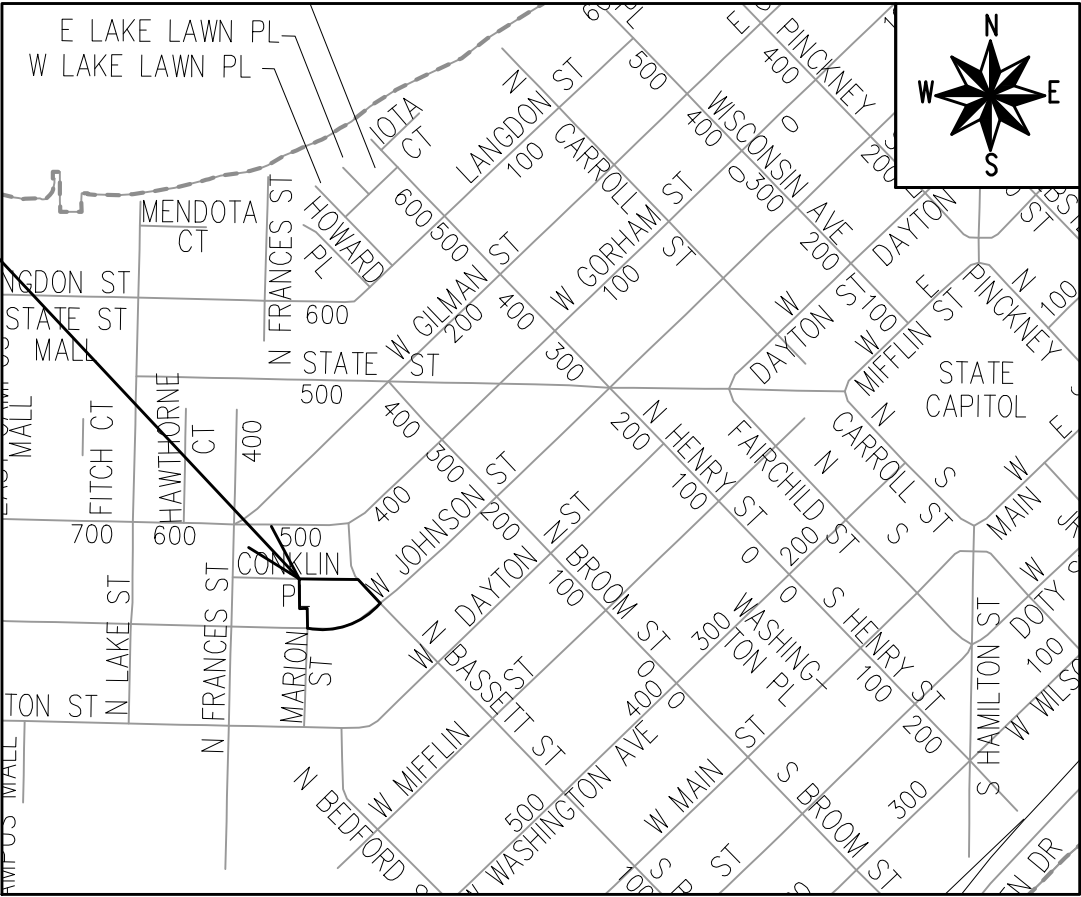
SHEET NO.	D1	GENERAL NOTES
SHEET NO.	U1	SANITARY PLAN & PROFILE
SHEET NO.	C5.0	UTILITY PLAN
NO MAINTENANCE PLAN		

CITY OF MADISON
CITY ENGINEERING DIVISION
DEPARTMENT OF PUBLIC WORKS
PLAN OF PROPOSED IMPROVEMENT

302 N BASSETT STREET-
UTILITIES ONLY

CITY PROJECT NO.14038
CONTRACT NO. 9150

PROJECT
LOCATION



PUBLIC IMPROVEMENT PROJECT
APPROVED

MARCH 29,2022

BY THE COMMON COUNCIL
OF MADISON, WISCONSIN

PUBLIC IMPROVEMENT DESIGN
APPROVED BY:

Nov Greg Fries

Nov 17, 2022

City Engineer

Date

SANITARY SEWER
DESIGNED BY:

SEE
INDIVIDUAL
SHEET

STORM SEWER
DESIGNED BY:

SEE
INDIVIDUAL
SHEET

WATER
DESIGNED BY:

SEE
INDIVIDUAL
SHEET

LEGEND

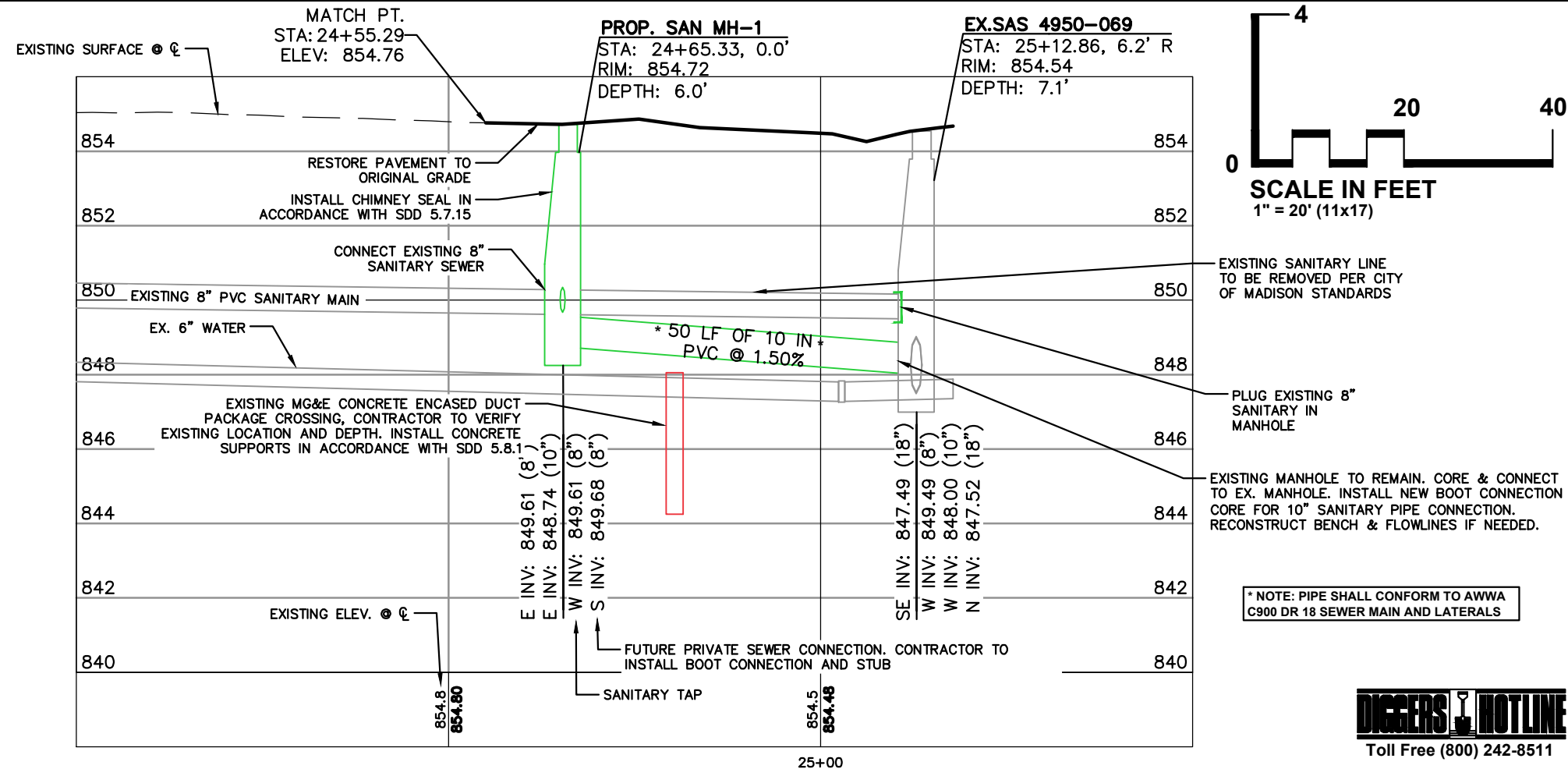
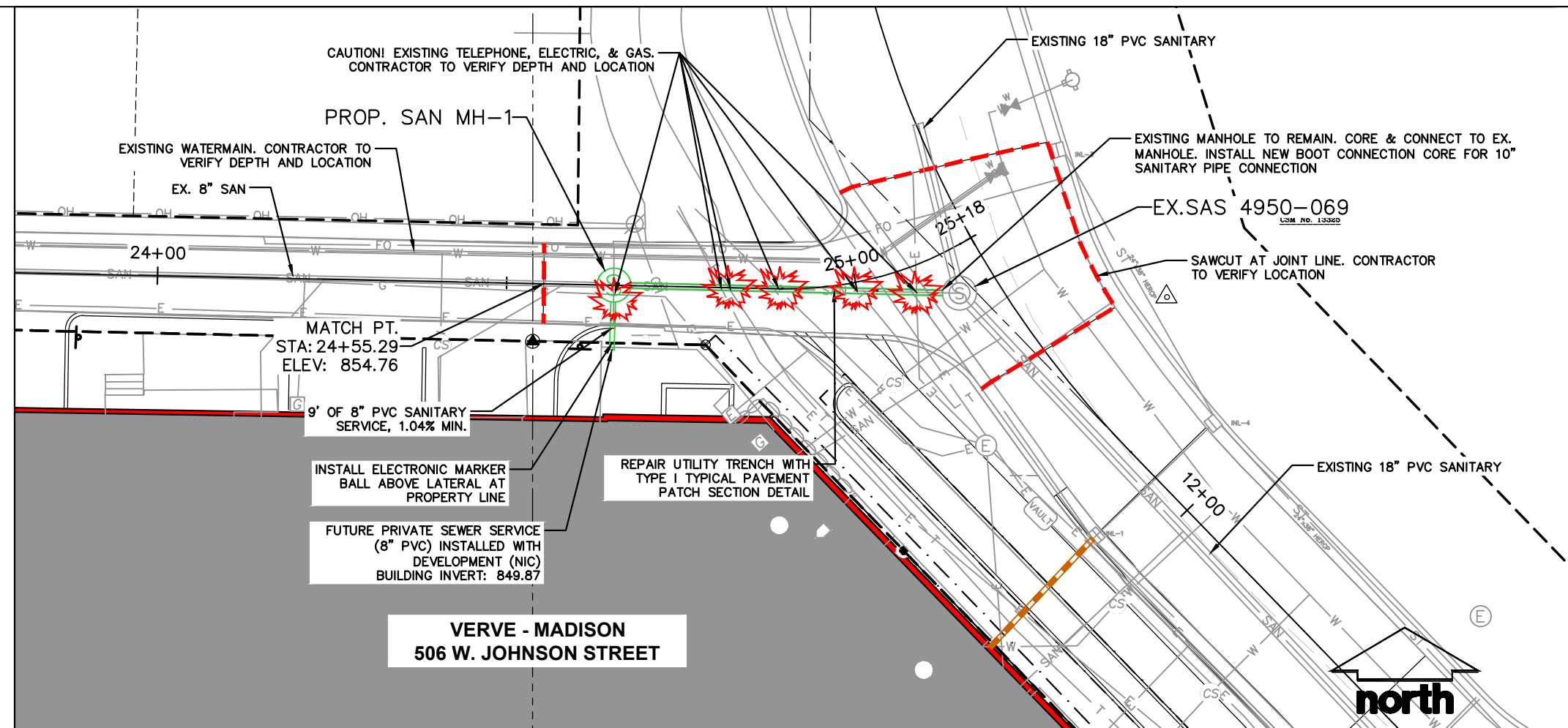
- PROPERTY LINE
- EDGE OF PAVEMENT
- STANDARD CURB AND GUTTER
- ASPHALT PAVEMENT
- CONCRETE PAVEMENT
- SANITARY SEWER
- WATERMAIN
- STORM SEWER
- INSULATION
- SAWCUT EXISTING PAVEMENT

- GENERAL NOTES**
- THE DEVELOPER SHALL REPLACE ALL CURB & GUTTER AND SIDEWALK THAT IS DAMAGED OR DETERMINED TO BE IN UNSATISFACTORY CONDITION, REGARDLESS OF WHETHER THE DAMAGE EXISTED PRIOR TO CONSTRUCTION.
 - PAVEMENT SAWCUTS AND FINAL PAVEMENT PATCHING LIMITS SHALL BE AS DIRECTED BY THE CITY CONSTRUCTION ENGINEER. SAWCUTS AND LIMITS SHOWN ON THE PLAN ARE BASED ON ANTICIPATED DISTURBANCE AND THE PATCHING CRITERIA BUT SHALL BE CONSIDERED APPROXIMATE. ALL PAVEMENT PATCHING SHALL BE PER THE CITY'S PATCHING CRITERIA.
 - OBTAIN A PRINT OUT OF THE ALIGNMENT FROM THE CITY ENGINEER PRIOR TO STAKING THIS PROJECT.

- UTILITY NOTES**
- POWER POLES AND OTHER OBSTRUCTIONS SHALL BE MOVED TO PROVIDE 2 FEET MINIMUM OF CLEAR DISTANCE FROM ANY FACE OF CURB OR EDGE OF SIDEWALK.
 - THERE MAY BE EXISTING UTILITIES OR OTHER FEATURES WHICH ARE EITHER NOT SHOWN OR SHOWN INCORRECTLY ON THIS PLAN. IT IS THE RESPONSIBILITY OF THE DEVELOPER TO LOCATE AND IDENTIFY ALL UTILITIES AND TOPOGRAPHY WHICH MAY AFFECT THE CONSTRUCTION OF THESE IMPROVEMENTS.
 - RELOCATION OR ADJUSTING OF PRIVATE UTILITY FACILITIES, SUCH AS POLES, PEDESTALS, BOXES, STRUCTURES, CASTINGS OR HANDHOLES, SHALL BE COORDINATED WITH PRIVATE UTILITY COMPANIES.
 - DEVELOPER MUST SUBMIT TRAFFIC CONTROL PLAN TO CITY TRAFFIC ENGINEER AT LEAST 14 DAYS PRIOR TO THE START OF WORK. WORK SHALL NOT PROCEED UNTIL AN APPROVED TRAFFIC CONTROL PLAN IS IN PLACE.



NOTE: BYPASS PUMPING SHALL BE PROVIDED BY THE CONTRACTOR PER CITY OF MADISON STANDARD SPECIFICATIONS & REQUIREMENTS.



* NOTE: PIPE SHALL CONFORM TO AWWA C900 DR 18 SEWER MAIN AND LATERALS



CREATE THE VISION TELL THE STORY

jsdinc.com

MADISON REGIONAL OFFICE
161 HORIZON DRIVE, SUITE 101
VERONA, WISCONSIN 53593
P. 608.848.5060

CLIENT:
SUBTEXT LIVING

CLIENT ADDRESS:
3000 LOCUST STREET
ST. LOUIS, MO 63103

PROJECT:
VERVE - MADISON
PUBLIC SANITARY
SEWER IMPROVEMENTS
PROJECT NO. 14038
CONTRACT NO. 9150

PROJECT LOCATION:
506 W. JOHNSON ST.
MADISON, WISCONSIN
DANE COUNTY

PLAN MODIFICATIONS:

#	Date	Description
1	04.04.22	CITY REVIEW SET
2	05.05.22	PERMIT SET
3	11.15.22	ISSUED FOR CONSTRUCTION
4		
5		
6		
7		
8		
9		
10		
11		
12		
13		
14		
15		

Designed By:

Reviewed By:

Approved By:

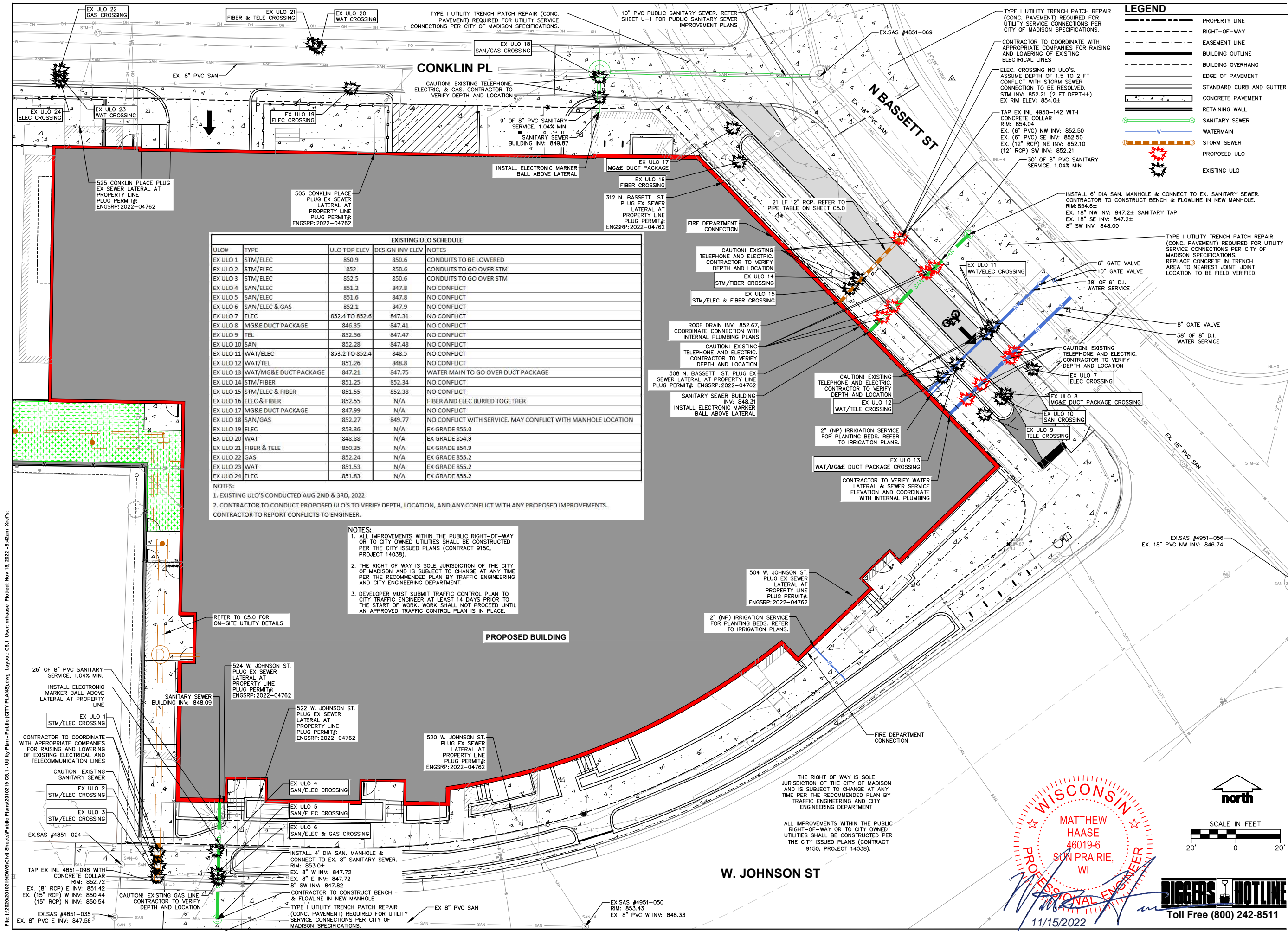
SHEET TITLE:
SANITARY PLAN AND
PROFILE

SHEET NUMBER:

U-1

JSD PROJECT NO:

THESE PLANS AND DESIGNS ARE COPYRIGHT PROTECTED AND MAY NOT BE USED IN WHOLE OR IN PART WITHOUT THE WRITTEN CONSENT OF JSD PROFESSIONAL SERVICES, INC.



EXISTING ULO SCHEDULE				
ULO#	TYPE	ULO TOP ELEV	DESIGN INV ELEV	NOTES
EX ULO 1	STM/ELEC	850.9	850.6	CONDUITS TO BE LOWERED
EX ULO 2	STM/ELEC	852	850.6	CONDUITS TO GO OVER STM
EX ULO 3	STM/ELEC	852.5	850.6	CONDUITS TO GO OVER STM
EX ULO 4	SAN/ELEC	851.2	847.8	NO CONFLICT
EX ULO 5	SAN/ELEC	851.6	847.8	NO CONFLICT
EX ULO 6	SAN/ELEC & GAS	852.1	847.9	NO CONFLICT
EX ULO 7	ELEC	852.4 TO 852.6	847.31	NO CONFLICT
EX ULO 8	MG&E DUCT PACKAGE	846.35	847.41	NO CONFLICT
EX ULO 9	TEL	852.56	847.47	NO CONFLICT
EX ULO 10	SAN	852.28	847.48	NO CONFLICT
EX ULO 11	WAT/ELEC	853.2 TO 852.4	848.5	NO CONFLICT
EX ULO 12	WAT/TEL	851.26	848.8	NO CONFLICT
EX ULO 13	WAT/MG&E DUCT PACKAGE	847.21	847.75	WATER MAIN TO GO OVER DUCT PACKAGE
EX ULO 14	STM/FIBER	851.25	852.34	NO CONFLICT
EX ULO 15	STM/ELEC & FIBER	851.55	852.38	NO CONFLICT
EX ULO 16	ELEC & FIBER	852.55	N/A	FIBER AND ELEC BURIED TOGETHER
EX ULO 17	MG&E DUCT PACKAGE	847.99	N/A	NO CONFLICT
EX ULO 18	SAN/GAS	852.27	849.77	NO CONFLICT WITH SERVICE. MAY CONFLICT WITH MANHOLE LOCATION
EX ULO 19	ELEC	853.36	N/A	EX GRADE 855.0
EX ULO 20	WAT	848.88	N/A	EX GRADE 854.9
EX ULO 21	FIBER & TELE	850.35	N/A	EX GRADE 854.9
EX ULO 22	GAS	852.24	N/A	EX GRADE 855.2
EX ULO 23	WAT	851.53	N/A	EX GRADE 855.2
EX ULO 24	ELEC	851.83	N/A	EX GRADE 855.2

NOTES:
1. EXISTING ULO'S CONDUCTED AUG 2ND & 3RD, 2022.
2. CONTRACTOR TO CONDUCT PROPOSED ULO'S TO VERIFY DEPTH, LOCATION, AND ANY CONFLICT WITH ANY PROPOSED IMPROVEMENTS. CONTRACTOR TO REPORT CONFLICTS TO ENGINEER.

NOTES:
1. ALL IMPROVEMENTS WITHIN THE PUBLIC RIGHT-OF-WAY OR TO CITY OWNED UTILITIES SHALL BE CONSTRUCTED PER THE CITY ISSUED PLANS (CONTRACT 9150, PROJECT 14038).
2. THE RIGHT OF WAY IS SOLE JURISDICTION OF THE CITY OF MADISON AND IS SUBJECT TO CHANGE AT ANY TIME PER THE RECOMMENDED PLAN BY TRAFFIC ENGINEERING AND CITY ENGINEERING DEPARTMENT.
3. DEVELOPER MUST SUBMIT TRAFFIC CONTROL PLAN TO CITY TRAFFIC ENGINEER AT LEAST 14 DAYS PRIOR TO THE START OF WORK. WORK SHALL NOT PROCEED UNTIL AN APPROVED TRAFFIC CONTROL PLAN IS IN PLACE.

PROPOSED BUILDING

W. JOHNSON ST

WISCONSIN PROFESSIONAL ENGINEER
MATTHEW HAASE
46019-6
SUN PRAIRIE, WI
11/15/2022

north
SCALE IN FEET
20' 0 20'

DIGGERS HOTLINE
Toll Free (800) 242-8511

LEGEND

- PROPERTY LINE
- RIGHT-OF-WAY
- EASEMENT LINE
- BUILDING OUTLINE
- BUILDING OVERHANG
- EDGE OF PAVEMENT
- STANDARD CURB AND GUTTER
- CONCRETE PAVEMENT
- RETAINING WALL
- SANITARY SEWER
- WATERMAIN
- STORM SEWER
- PROPOSED ULO
- EXISTING ULO

CREATE THE VISION TELL THE STORY

jsdinc.com

MADISON REGIONAL OFFICE
161 HORIZON DRIVE, SUITE 101
VERONA, WISCONSIN 53593
P. 608.848.5060

CLIENT:
SUBTEXT LIVING

CLIENT ADDRESS:
**3000 LOCUST STREET
ST. LOUIS, MO 63103**

PROJECT:
**VERVE - MADISON
PUBLIC SANITARY
SEWER IMPROVEMENTS
PROJECT NO. 14038
CONTRACT NO. 9150**

PROJECT LOCATION:
**506 W. JOHNSON ST.
MADISON, WISCONSIN
DANE COUNTY**

#	Date:	Description:
1	04.04.22	CITY REVIEW SET
2	05.05.22	PERMIT SET
3	11.15.22	ISSUED FOR CONSTRUCTION
4		
5		
6		
7		
8		
9		
10		
11		
12		
13		
14		
15		

Designed By:
Reviewed By:
Approved By:
SHEET TITLE:
UTILITY PLAN - PUBLIC

SHEET NUMBER:
C5.1

JSD PROJECT NO: 20-10219

File: I:\2020\2010219\DWG\Civil Sheets\Public Plans\2010219 C5.1 - Utility Plan - Public (CITY PLANS).dwg Layout: C5.1 User: mhaase Plotted: Nov 15, 2022 - 8:42am Xref's: