



CITY OF MADISON
CITY ENGINEERING DIVISION
DEPARTMENT OF PUBLIC WORKS
PLAN OF PROPOSED IMPROVEMENT

109 E WILSON STREET

CITY PROJECT NO. 14427
CONTRACT NO. 9257

INDEX OF SHEETS

<i>SHEET NO.</i>	<i>1</i>	<i>TITLE</i>
<i>SHEET NO.</i>	<i>D1</i>	<i>STANDARD NOTES</i>
<i>SHEET NO.</i>	<i>D2</i>	<i>TYPICAL SECTION</i>
<i>SHEET NO.</i>	<i>P1</i>	<i>PLAN & PROFILES</i>
<i>SHEET NO.</i>	<i>U1</i>	<i>UTILITY PLAN</i>
<i>SHEET NO.</i>	<i>L1</i>	<i>LANDSCAPING PLAN</i>
<i>SHEET NO.</i>	<i>X1-X2</i>	<i>CROSS SECTIONS</i>

NO MAINTENANCE PLAN REQUIRED

REVISION NO. 2, REVISED 5/2/2025 - F.B.E.G.
1. ADDED SHEETS D1, D2, P1, L1, X1, AND X2 TO THE INDEX OF SHEETS AND STAMP BLOCK FOR STREET DESIGN.

*PROJECT
LOCATION*



*PUBLIC IMPROVEMENT PROJECT
APPROVED*

APPROVED DATE: JUNE 6, 2023

BY THE COMMON COUNCIL
OF MADISON, WISCONSIN

PUBLIC IMPROVEMENT DESIGN
APPROVED BY:

Julie

05/15/2025

City Engineer

Date _____

*STREET
DESIGNED BY:*



05/15/2025

**STORM & SANITARY SEWER
DESIGNED BY:**

*LATERAL
ONLY*

*WATER
DESIGNED BY:*

*LATERAL
ONLY*

PLOT SCALE: 1 IN:1 FT_XREF

PLOT NAME: ---

REV. DATE: 5/2/2025 4:05 PM

ORIGINATOR: CITY_OF_MADISON

FILE NAME: M:\DESIGN\Projects\14427\CAD\Streets\14427EN-TitleSheet.dwg

DATE: _____

THE LOCATION AND INFORMATION FOR PROPOSED NEW TREES, IN THE PUBLIC RIGHT OF WAY OR ON PUBLIC LANDS ARE APPROXIMATE AND ARE SHOWN FOR REFERENCE ONLY. THE LOCATIONS, SPECIFICATIONS AND PLANTING METHODS OF ALL PROPOSED NEW OR REPLACEMENT TREES IN THE PUBLIC RIGHT OF WAY OR ON PUBLIC LANDS SHALL BE APPROVED BY THE CITY FORESTER PRIOR TO INSTALLATION.

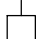


NO TREES IN THE RIGHT OF WAY OR ON PUBLIC LANDS SHALL BE TRIMMED, PRUNED, REMOVED OR ADVERSELY AFFECTED IN ANY WAY UNTIL THE DEVELOPER HAS RECEIVED WRITTEN PERMISSION FROM THE CITY ENGINEER OR CITY FORESTER. SAID WRITTEN PERMISSION SHALL INCLUDE LANGUAGE INDICATING THAT SECTION 10.101 OF THE MADISON GENERAL ORDINANCES AND ADMINISTRATIVE PROCEDURE MEMORANDUM NO. 6-2, REFERRING TO NOTIFICATION OF PROPERTY OCCUPANTS AND/OR OWNERS, HAS BEEN COMPLIED WITH.

DEVELOPER MUST SUBMIT A TRAFFIC CONTROL PLAN TO CITY TRAFFIC ENGINEERING AT LEAST 14 DAYS PRIOR TO THE START OF WORK. WORK SHALL NOT PROCEED UNTIL AN APPROVED TRAFFIC CONTROL PLAN IS IN PLACE.

CONTACT THE PROJECT ENGINEER AND DESIGNER, FADI EL MUSA GONZALEZ, AT FELMUSAGONZALEZ@CITYOFMADISON.COM FOR CAD FILES AND ALIGNMENT DATA PRIOR TO STAKING.

CONTACT THE CITY CONSTRUCTION ENGINEER, KYLE FRANK, AT KFRANK@CITYOFMADISON.COM FOR PRE-CONSTRUCTION MEETING SCHEDULING, COORDINATION, AND INSPECTION.

REVISION NO. 2, REVISED 5/2/2025 - F.B.E.G.
1. NOTE ADDED TO CONTACT THE CITY CONSTRUCTION ENGINEER TO SCHEDULE PRE-CONSTRUCTION MEETING.

CONVENTIONAL SIGNS	
FIELD VERIFY ALL UTILITY LOCATIONS	
GAS	—— G ——
STORM SEWER	—— ST ——
SANITARY SEWER	—— SAN ——
WATER	—— W ——
BURIED ELECTRIC	—— E ——
OVERHEAD ELECTRIC	—— OH ——
POWER POLE	
ADA COMPLIANT RAMP W/ DETECTABLE WARNING FIELD	
COMBUSTIBLE FLUIDS	

UNDERDRAINS SHALL BE INSTALLED PER STANDARD DETAIL DRAWING 4.05 FOR 75' ON EACH SIDE OF THE LOW POINT, OR TO THE NEAREST CURB HIGH POINT. ALL UNDERDRAIN SHALL BE WRAPPED.

ALL GUTTERS SHALL DRAIN WITH A MINIMUM GRADE OF 0.5% TOWARD STORM SEWER INLETS.

ALL DITCHES SHALL DRAIN WITH A MINIMUM GRADE OF 0.5%

THE CROSS SLOPE OF SIDEWALKS AND BARRIER FREE SIDEWALK CURB RAMPS SHALL TYPICALLY BE 1.5%. THE LONGITUDINAL GRADE OF BARRIER FREE SIDEWALK CURB RAMPS SHALL NOT EXCEED 8.33%. ALL SIDEWALK RAMPS SHALL BE CONSTRUCTED ACCORDING TO S.D.D. 3.04. AT ALL OTHER LOCATIONS THE LONGITUDINAL GRADE OF SIDEWALKS SHALL NOT EXCEED 5.0 % OR THE ADJACENT STREET GRADE WHICHEVER IS GREATER NOR BE LESS THAN 0.5% AND SHALL DRAIN TOWARD STORM SEWER INLETS. SIDE SLOPES WITHIN TEN FEET OF A PUBLIC SIDEWALK SHALL NOT EXCEED 4:1. ALL SIDEWALK AND SIDEWALK RAMP ELEVATIONS AND GRADES SHALL BE FIELD VERIFIED AND SET TO COMPLY WITH THE CITY OF MADISON STANDARD SPECIFICATIONS AND THE A.D.A. GUIDELINES.

OBTAIN A PRINT OUT OF THE ALIGNMENTS FROM THE CITY PROJECT ENGINEER PRIOR TO STAKING THIS PROJECT. THE CITY PROJECT ENGINEER IS MARIO GALINDEZ, EMAIL: MGALINDEZ@CITYOFMADISON.COM

CURB STATION AND OFFSETS SHALL BE TO THE EDGE OF PAVEMENT UNLESS OTHERWISE INDICATED. CURB ELEVATIONS SHALL BE TO THE EDGE OF PAVEMENT UNLESS OTHERWISE INDICATED.

POWER POLES AND OTHER OBSTRUCTIONS SHALL BE MOVED TO PROVIDE 2 FEET MINIMUM OF CLEAR DISTANCE FROM ANY FACE OF CURB OR EDGE OF SIDEWALK UNLESS OTHERWISE INDICATED ON THE PLANS.

ANY INFORMATION SHOWN ON THIS PLAN, WHICH IS NOT PART OF THIS RIGHT-OF-WAY PROJECT, IS PRELIMINARY AND NOT FOR CONSTRUCTION.

THERE MAY BE EXISTING UTILITIES OR OTHER FEATURES WHICH ARE EITHER NOT SHOWN OR SHOWN INCORRECTLY ON THIS PLAN. IT IS THE RESPONSIBILITY OF THE DEVELOPER TO LOCATE AND IDENTIFY ALL UTILITIES AND TOPOGRAPHY WHICH MAY AFFECT THE CONSTRUCTION OF THESE IMPROVEMENTS.

ALL PERMANENT SIGNING AND POSTING WILL BE DETERMINED AND PROVIDED BY THE TRAFFIC ENGINEERING DIVISION, FOLLOWING CONSTRUCTION OF THESE IMPROVEMENTS.

THE DEVELOPER SHALL PROVIDE, INSTALL AND MAINTAIN ALL STREET END BARRICADES, SIGNING AND TRAFFIC CONTROL, AS REQUIRED BY THE CITY TRAFFIC ENGINEER.

PAVEMENT SAWCUTS SHALL BE AS DIRECTED BY THE CITY CONSTRUCTION ENGINEER. SAWCUTS SHOWN ON THE PLAN ARE APPROXIMATE.

CURB ON CUL DE SACS SHALL BE INSTALLED ACCORDING TO S.D.D 3.05.

ALL WORK IN THE RIGHT OF WAY AND PUBLIC EASEMENTS SHALL BE IN ACCORDANCE WITH THE CITY OF MADISON STANDARD SPECIFICATIONS FOR PUBLIC WORKS CONSTRUCTION LATEST EDITION.

ALL PROPOSED IMPROVEMENTS IN THE RIGHT-OF-WAY ARE BASED ON SURVEY DATA PROVIDED BY THE DEVELOPER OR ITS CONSULTANT. IN THE CASE THAT THE PROPOSED IMPROVEMENTS CAN NOT BE INSTALLED PER THESE PLANS OR THE CITY OF MADISON STANDARD SPECIFICATION FOR PUBLIC WORKS CONSTRUCTION, LATEST EDITION, THE DEVELOPER SHALL BE RESPONSIBLE FOR THE COST OF EXTRA WORK DUE TO INACCURACIES OF THE SURVEY.

ALL UTILITY VERIFICATIONS AND ACCURACY OF THE DRAWINGS ARE THE RESPONSIBILITY OF THE DEVELOPER. ANY CONFLICTS THAT ARISE FROM MISSING OR ERRONEOUS INFORMATION WILL BE AT THE EXPENSE OF THE DEVELOPER. NO PRECAST STRUCTURES WILL BE APPROVED FOR STORM OR SANITARY SEWER UNTIL ALL POTENTIAL UTILITY CONFLICTS ARE RESOLVED.

IN LOCATIONS WHERE PAVEMENT RESTORATION IS NOT IDENTIFIED ADJACENT TO CURB AND GUTTER REPLACEMENT, IT IS ASSUMED THAT CURB AND GUTTER WILL BE REPLACED WITHOUT DAMAGING ADJACENT PAVEMENT. IF DAMAGED, THE MILL AND OVERLAY LIMITS SHALL BE EXTENDED BY THE CITY CONSTRUCTION ENGINEER AS NECESSARY TO MEET THE STANDARD PATCHING CRITERIA.

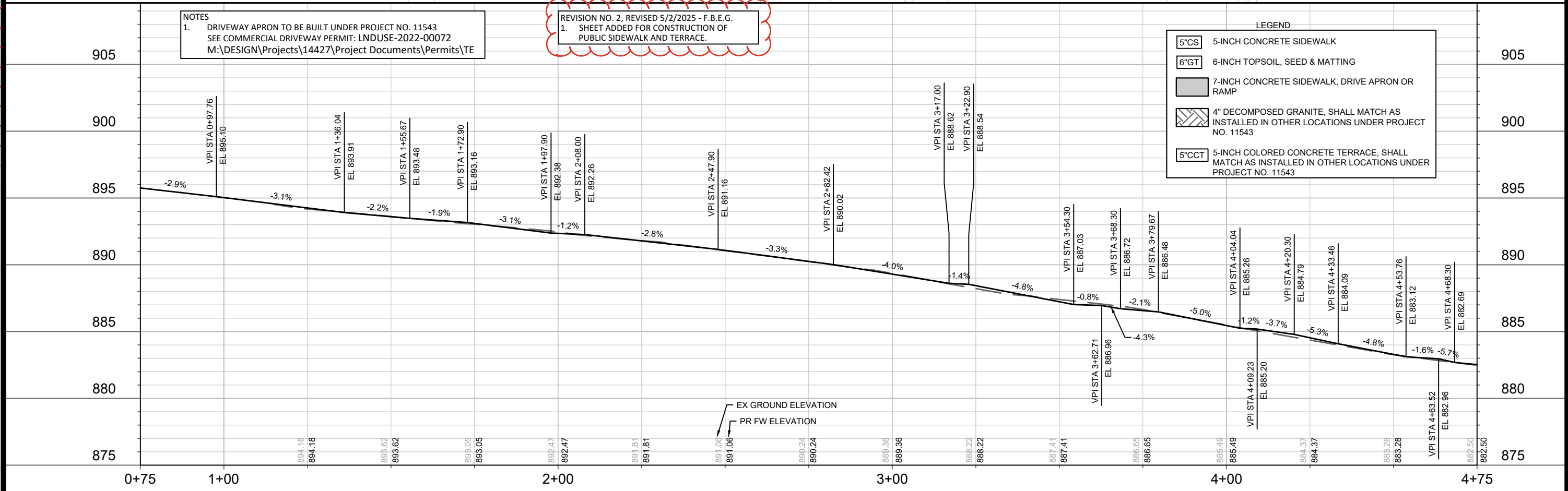
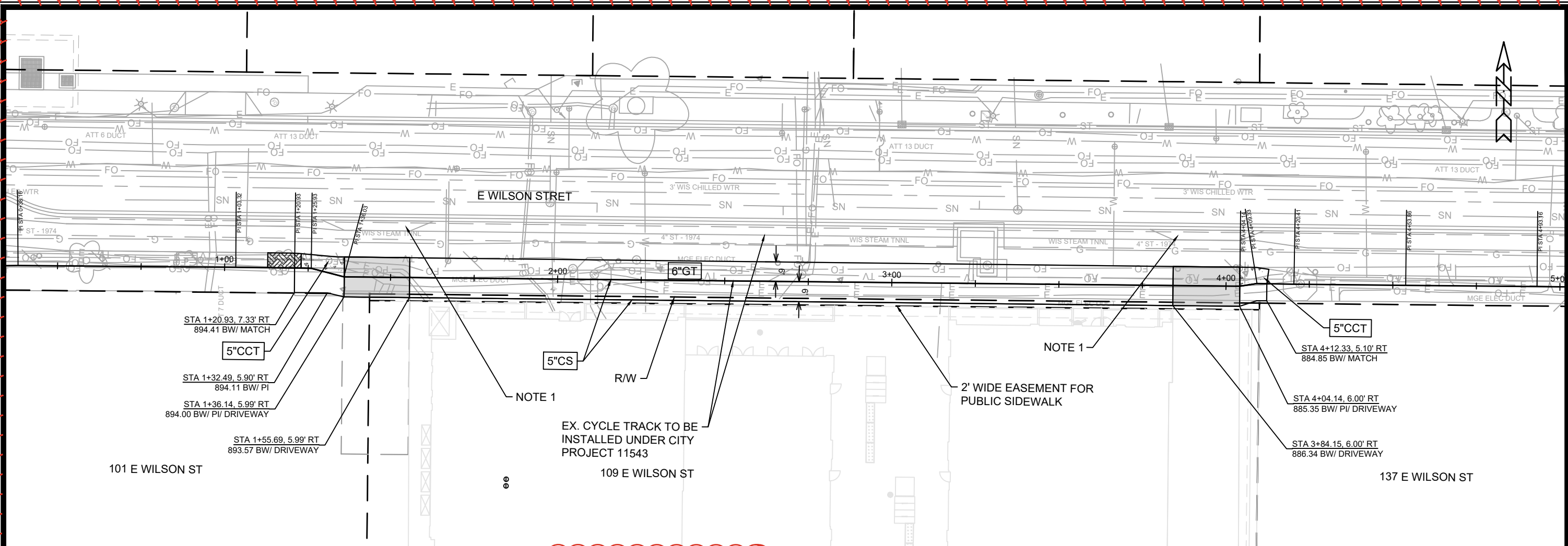
BY	DATE
SCALE	###/###/##
REVISION	DATE
DESIGNED BY	MFG
14427	5/2/2025 3:20 PM

14427
MADISON, WI
9257
CONTRACT NO:

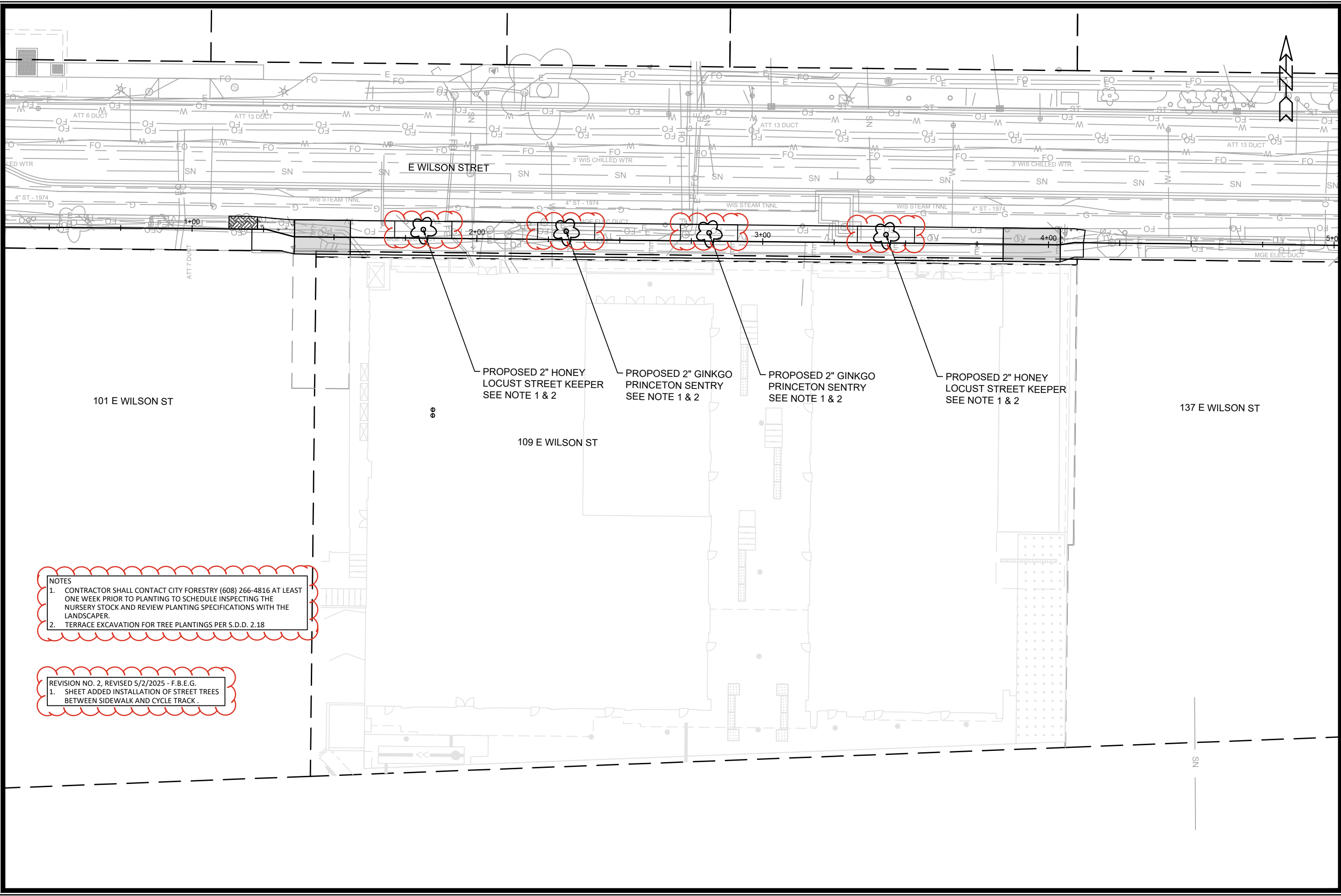
STANDARD NOTES
109 E. WILSON ST
M:\DESIGN\Projects\14427\CAD\Streets\14427\EN-Details.dwg



14427
D-1




14427	MADISON, WI	CONTRACT NO: 9257
PLAN & PROFILE - E WILSON ST		
109 E. WILSON ST		
M:\DESIGN\Projects\14427\CAD\Streets\14427EN-PnP.dwg		
14427		
P-1		

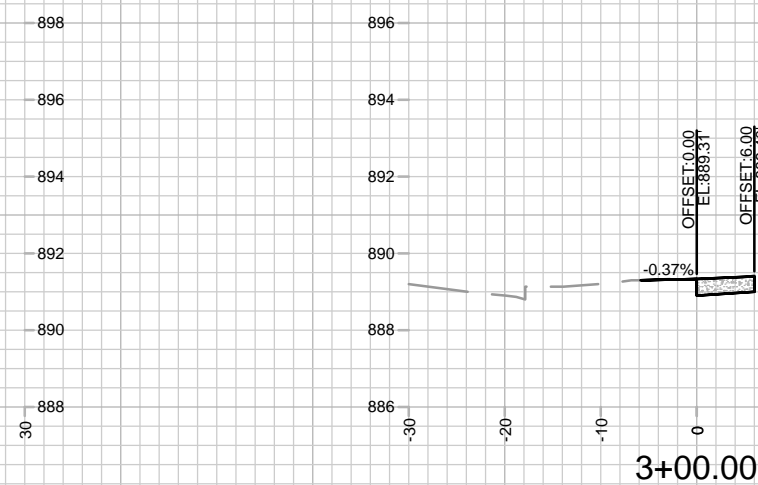
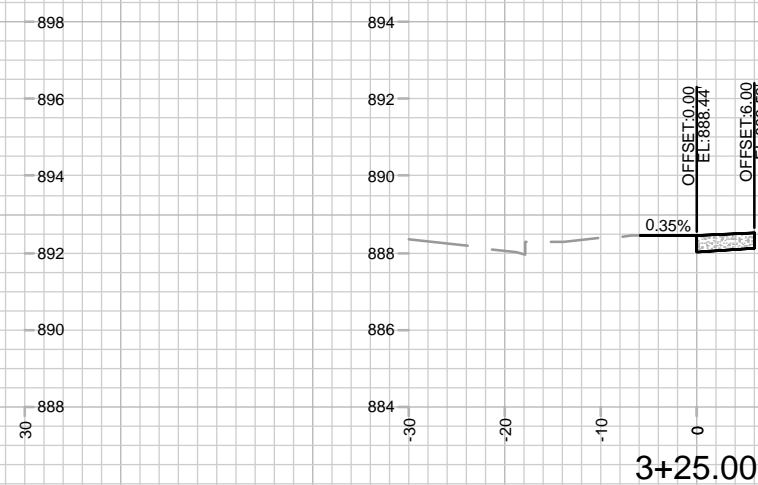
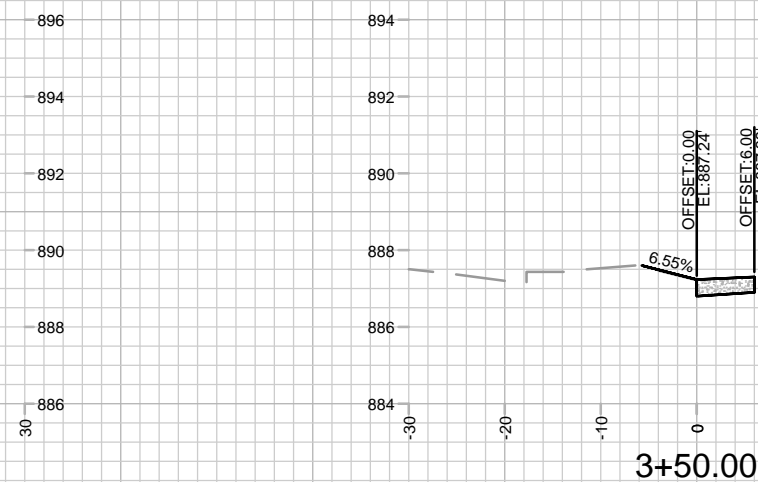
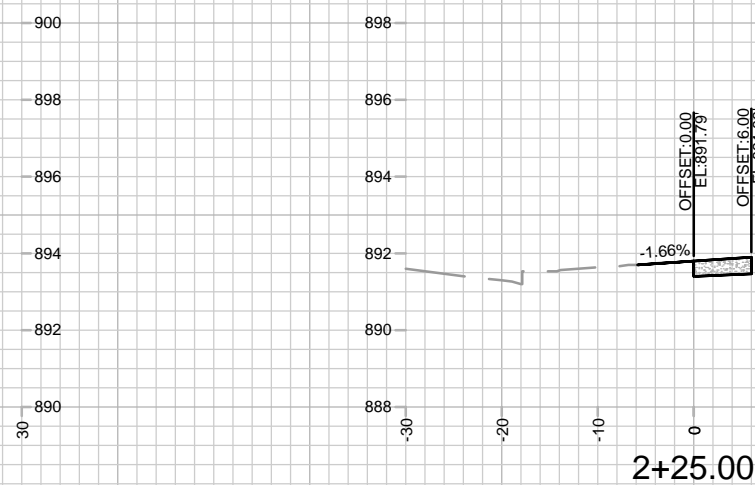
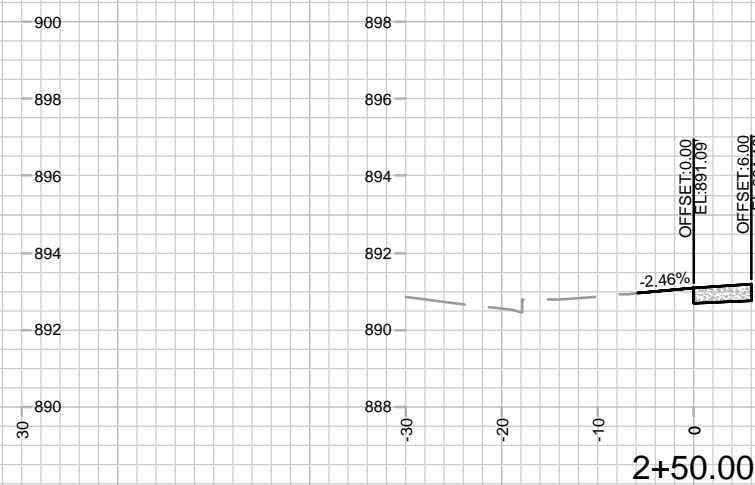
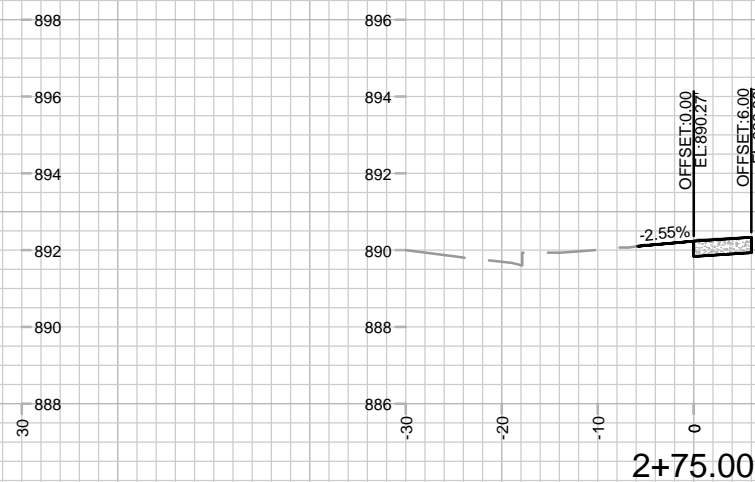
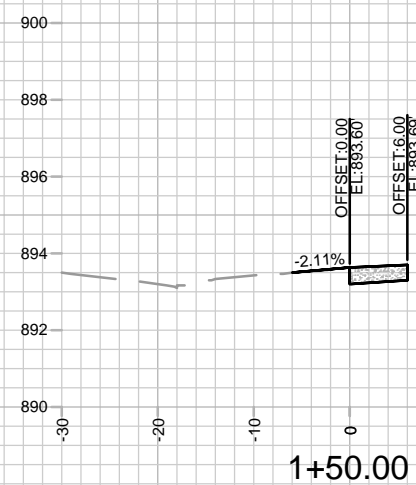
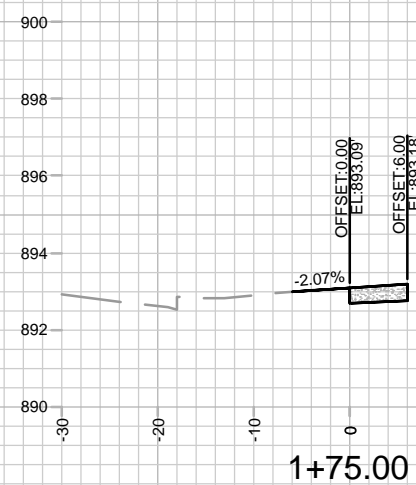
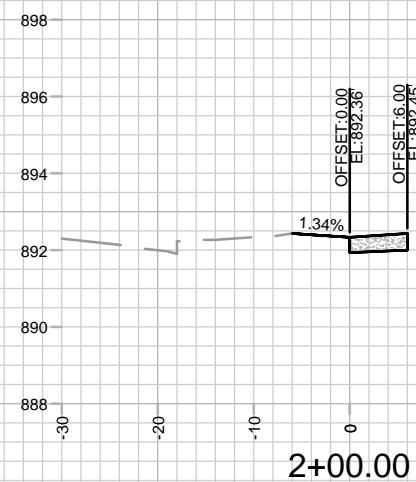


NOTES
1. CONTRACTOR SHALL CONTACT CITY FORESTRY (608) 266-4816 AT LEAST ONE WEEK PRIOR TO PLANTING TO SCHEDULE INSPECTING THE NURSERY STOCK AND REVIEW PLANTING SPECIFICATIONS WITH THE LANDSCAPER.
2. TERRACE EXCAVATION FOR TREE PLANTINGS PER S.D.D. 2.18

REVISION NO. 2, REVISED 5/2/2025 - F.B.E.G.
1. SHEET ADDED INSTALLATION OF STREET TREES BETWEEN SIDEWALK AND CYCLE TRACK.

14427		14427		14427	
LANDSCAPING PLAN - E WILSON ST		MADISON, WI		CONTRACT NO: 9257	
109 E. WILSON ST					
M:\DESIGN\Projects\14427\CAD\Streets\14427\EN-LandscapingPlan.dwg					
		14427		L-1	
				L-1	
				BY	
				DATE	
				REVISION	
				Scale: #####	
				Date: 5/15/2025 9:55 AM	
				Designed By: MFG	
				14427	

REVISION NO. 2, REVISED 5/2/2025 - F.B.E.G.
1. SHEET ADDED FOR CONSTRUCTION OF
PUBLIC SIDEWALK AND TERRACE.



14427
X-1

CROSS SECTIONS - E WILSON ST
109 E. WILSON ST

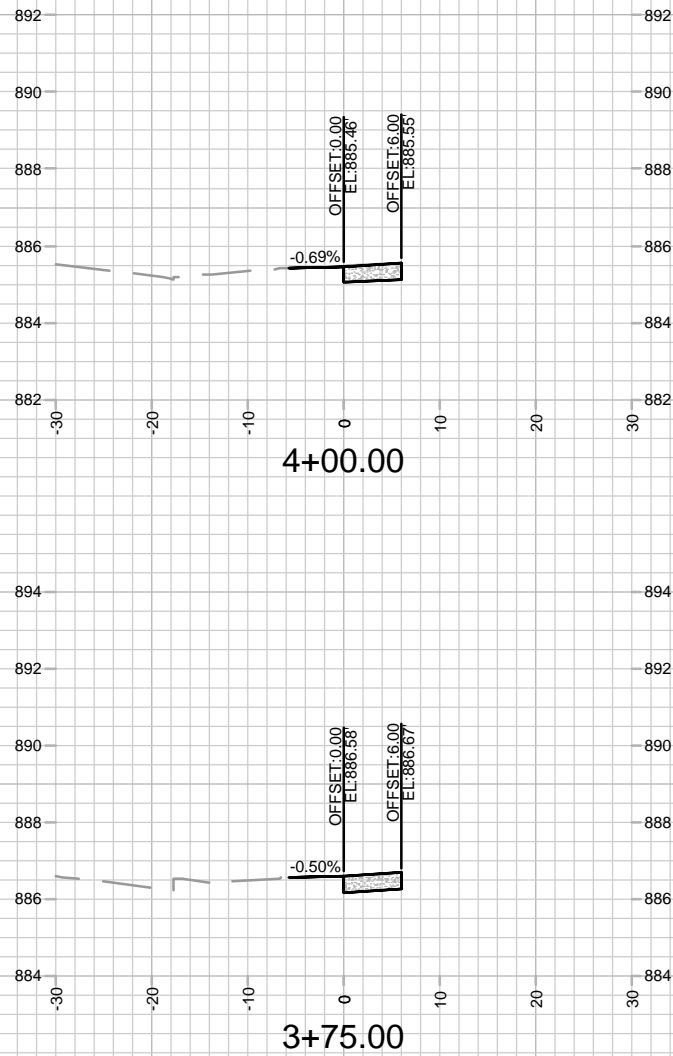
M:\DESIGN\Projects\14427\CAD\Streets\14427EN-Xsections.dwg

14427
MADISON, WI

CONTRACT NO: 9257

MARK	REVISION	DATE	BY
1		5/2/2025	Y-1
2		5/2/2025	Y-1
3		5/2/2025	Y-1
4		5/2/2025	Y-1
5		5/2/2025	Y-1

REVISION NO. 2, REVISED 5/2/2025 - F.B.E.G.
1. SHEET ADDED FOR CONSTRUCTION OF
PUBLIC SIDEWALK AND TERRACE.



14427	CROSS SECTIONS - E WILSON ST	14427	BY
109 E. WILSON ST	MADISON, WI		DATE
M:\DESIGN\Projects\14427\CAD\Streets\14427\EN-Xsections.dwg	CONTRACT NO: 9257		Scale: 1" = 20'
		MARK	REVISION
		Designed By: MFG	Date: 5/2/2025 3:30 PM
		14427	X-2