

Madison, Wisconsin

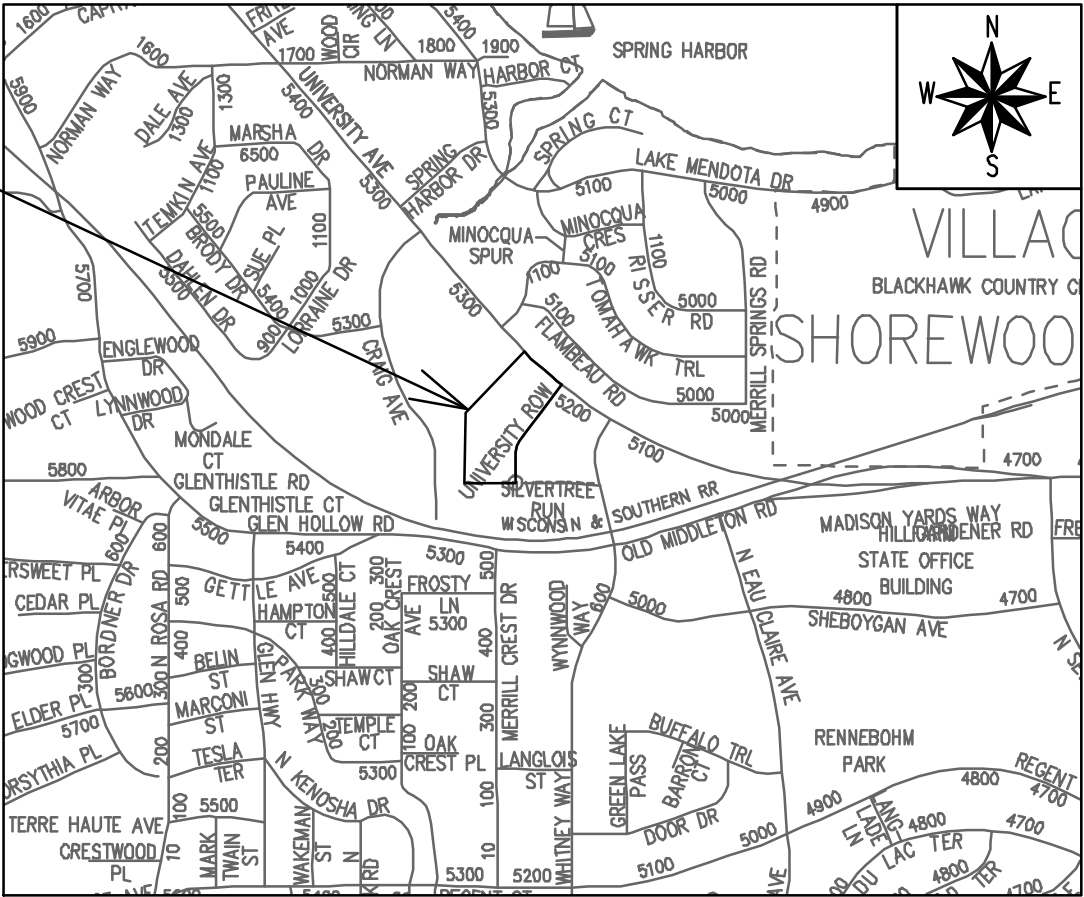
INDEX OF SHEETS

SHEET NO.	D1	STANDARD NOTES
SHEET NO.	D2-D3	TYPICAL SECTIONS
SHEET NO.	D4	BUS PAD DETAIL - N WHITNEY WAY
SHEET NO.	P1-P3	PLAN & PROFILE
SHEET NO.	U1	UTILITIES PLAN
SHEET NO.	U2	STORM SEWER EASEMENT PLAN & PROFILE
SHEET NO.	U3	STRUCTURAL DETAILS
SHEET NO.	PM1	PAVEMENT MARKING PLANS
SHEET NO.	L1	LANDSCAPING PLAN
SHEET NO.	X1-X6	CROSS SECTIONS
SHEET NO.	MN1	MAINTENANCE PLAN (CITY USE ONLY)

CITY OF MADISON
CITY ENGINEERING DIVISION
DEPARTMENT OF PUBLIC WORKS
PLAN OF PROPOSED IMPROVEMENT
702-750 UNIVERSITY ROW

CITY PROJECT NO. 14872
CONTRACT NO. 9353

PROJECT
LOCATION



PUBLIC IMPROVEMENT PROJECT
APPROVED

FEBRUARY 11, 2025

BY THE COMMON COUNCIL
OF MADISON, WISCONSIN

PUBLIC IMPROVEMENT DESIGN
APPROVED BY:

[Signature]

07/02/2025

City Engineer

Date

STREET
DESIGNED BY:



07/02/2025

WATER
DESIGNED BY:

LATERAL ONLY

PAVEMENT MARKINGS
DESIGNED BY:



07/02/2025

SANITARY SEWER
DESIGNED BY:

LATERAL ONLY

STORM SEWER (EASEMENT)
DESIGNED BY:



07/02/2025

PLOT SCALE: 1 IN. = 100 FT.

PLOT NAME: ---

REV. DATE: 6/11/2025 8:08 AM

ORIGINATOR: CITY OF MADISON

THE LOCATION AND INFORMATION FOR PROPOSED NEW TREES, IN THE PUBLIC RIGHT OF WAY OR ON PUBLIC LANDS ARE APPROXIMATE AND ARE SHOWN FOR REFERENCE ONLY. THE LOCATIONS, SPECIFICATIONS AND PLANTING METHODS OF ALL PROPOSED NEW OR REPLACEMENT TREES IN THE PUBLIC RIGHT OF WAY OR ON PUBLIC LANDS SHALL BE APPROVED BY THE CITY FORESTER PRIOR TO INSTALLATION.

NO TREES IN THE RIGHT OF WAY OR ON PUBLIC LANDS SHALL BE TRIMMED, PRUNED, REMOVED OR ADVERSELY AFFECTED IN ANY WAY UNTIL THE DEVELOPER HAS RECEIVED WRITTEN PERMISSION FROM THE CITY ENGINEER OR CITY FORESTER. SAID WRITTEN PERMISSION SHALL INCLUDE LANGUAGE INDICATING THAT SECTION 10.101 OF THE MADISON GENERAL ORDINANCES AND ADMINISTRATIVE PROCEDURE MEMORANDUM NO. 6-2, REFERRING TO NOTIFICATION OF PROPERTY OCCUPANTS AND/OR OWNERS, HAS BEEN COMPLIED WITH.

DEVELOPER MUST SUBMIT A TRAFFIC CONTROL PLAN TO CITY TRAFFIC ENGINEERING AT LEAST 14 DAYS PRIOR TO THE START OF WORK. WORK SHALL NOT PROCEED UNTIL AN APPROVED TRAFFIC CONTROL PLAN IS IN PLACE.

CONTACT THE PROJECT ENGINEER AND DESIGNER, GRECIA IZQUIERDO TORRES, AT GIZQUIERDO@CITYOFMADISON.COM FOR CAD FILES AND ALIGNMENT DATA PRIOR TO STAKING.

CONTACT THE CITY CONSTRUCTION ENGINEER, KYLE FRANK, AT KFRANK@CITYOFMADISON.COM FOR PRECONSTRUCTION SCHEDULING, COORDINATION, AND INSPECTION.

CONVENTIONAL SIGNS

FIELD VERIFY ALL UTILITY LOCATIONS

GAS

STORM SEWER

SANITARY SEWER

WATER

BURIED ELECTRIC

OVERHEAD ELECTRIC

POWER POLE

ADA COMPLIANT RAMP W/
DETECTABLE WARNING FIELD

COMBUSTIBLE FLUIDS

— G —

— ST —

— SAN —

— W —

— E —

— OH —

UNDERDRAINS SHALL BE INSTALLED PER STANDARD DETAIL DRAWING 4.05 FOR 75' ON EACH SIDE OF THE LOW POINT, OR TO THE NEAREST CURB HIGH POINT. ALL UNDERDRAIN SHALL BE WRAPPED.

ALL GUTTERS SHALL DRAIN WITH A MINIMUM GRADE OF 0.5% TOWARD STORM SEWER INLETS.

ALL DITCHES SHALL DRAIN WITH A MINIMUM GRADE OF 0.5%

THE CROSS SLOPE OF SIDEWALKS AND BARRIER FREE SIDEWALK CURB RAMPS SHALL TYPICALLY BE 1.5%. THE LONGITUDINAL GRADE OF BARRIER FREE SIDEWALK CURB RAMPS SHALL NOT EXCEED 8.33%. ALL SIDEWALK RAMPS SHALL BE CONSTRUCTED ACCORDING TO S.D.D. 3.04. AT ALL OTHER LOCATIONS THE LONGITUDINAL GRADE OF SIDEWALKS SHALL NOT EXCEED 5.0 % OR THE ADJACENT STREET GRADE WHICHEVER IS GREATER NOR BE LESS THAN 0.5% AND SHALL DRAIN TOWARD STORM SEWER INLETS. SIDE SLOPES WITHIN TEN FEET OF A PUBLIC SIDEWALK SHALL NOT EXCEED 4:1. ALL SIDEWALK AND SIDEWALK RAMP ELEVATIONS AND GRADES SHALL BE FIELD VERIFIED AND SET TO COMPLY WITH THE CITY OF MADISON STANDARD SPECIFICATIONS AND THE A.D.A. GUIDELINES.

OBTAIN A PRINT OUT OF THE ALIGNMENTS FROM THE CITY PROJECT ENGINEER PRIOR TO STAKING THIS PROJECT. THE CITY PROJECT ENGINEER IS GRECIA IZQUIERDO TORRES, EMAIL: GIZQUIERDO@CITYOFMADISON.COM

CURB STATION AND OFFSETS SHALL BE TO THE EDGE OF PAVEMENT UNLESS OTHERWISE INDICATED. CURB ELEVATIONS SHALL BE TO THE EDGE OF PAVEMENT UNLESS OTHERWISE INDICATED.

POWER POLES AND OTHER OBSTRUCTIONS SHALL BE MOVED TO PROVIDE 2 FEET MINIMUM OF CLEAR DISTANCE FROM ANY FACE OF CURB OR EDGE OF SIDEWALK UNLESS OTHERWISE INDICATED ON THE PLANS.

ANY INFORMATION SHOWN ON THIS PLAN, WHICH IS NOT PART OF THIS RIGHT-OF-WAY PROJECT, IS PRELIMINARY AND NOT FOR CONSTRUCTION.

THERE MAY BE EXISTING UTILITIES OR OTHER FEATURES WHICH ARE EITHER NOT SHOWN OR SHOWN INCORRECTLY ON THIS PLAN. IT IS THE RESPONSIBILITY OF THE DEVELOPER TO LOCATE AND IDENTIFY ALL UTILITIES AND TOPOGRAPHY WHICH MAY AFFECT THE CONSTRUCTION OF THESE IMPROVEMENTS.

ALL PERMANENT SIGNING AND POSTING WILL BE DETERMINED AND PROVIDED BY THE TRAFFIC ENGINEERING DIVISION, FOLLOWING CONSTRUCTION OF THESE IMPROVEMENTS.

THE DEVELOPER SHALL PROVIDE, INSTALL AND MAINTAIN ALL STREET END BARRICADES, SIGNING AND TRAFFIC CONTROL, AS REQUIRED BY THE CITY TRAFFIC ENGINEER.

PAVEMENT SAWCUTS SHALL BE AS DIRECTED BY THE CITY CONSTRUCTION ENGINEER. SAWCUTS SHOWN ON THE PLAN ARE APPROXIMATE.

CURB ON CUL DE SACS SHALL BE INSTALLED ACCORDING TO S.D.D 3.05.

ALL WORK IN THE RIGHT OF WAY AND PUBLIC EASEMENTS SHALL BE IN ACCORDANCE WITH THE CITY OF MADISON STANDARD SPECIFICATIONS FOR PUBLIC WORKS CONSTRUCTION LATEST EDITION.

ALL PROPOSED IMPROVEMENTS IN THE RIGHT-OF-WAY ARE BASED ON SURVEY DATA PROVIDED BY THE DEVELOPER OR ITS CONSULTANT. IN THE CASE THAT THE PROPOSED IMPROVEMENTS CAN NOT BE INSTALLED PER THESE PLANS OR THE CITY OF MADISON STANDARD SPECIFICATION FOR PUBLIC WORKS CONSTRUCTION, LATEST EDITION, THE DEVELOPER SHALL BE RESPONSIBLE FOR THE COST OF EXTRA WORK DUE TO INACCURACIES OF THE SURVEY.

ALL UTILITY VERIFICATIONS AND ACCURACY OF THE DRAWINGS ARE THE RESPONSIBILITY OF THE DEVELOPER. ANY CONFLICTS THAT ARISE FROM MISSING OR ERRONEOUS INFORMATION WILL BE AT THE EXPENSE OF THE DEVELOPER. NO PRECAST STRUCTURES WILL BE APPROVED FOR STORM OR SANITARY SEWER UNTIL ALL POTENTIAL UTILITY CONFLICTS ARE RESOLVED.

ALL TERRACE EXCAVATIONS FOR NEW TREE PLANTINGS SHALL BE ACCORDING TO S.D.D. 2.18

IN LOCATIONS WHERE PAVEMENT RESTORATION IS NOT IDENTIFIED ADJACENT TO CURB AND GUTTER REPLACEMENT, IT IS ASSUMED THAT CURB AND GUTER WILL BE REPLACED WITHOUTH DAMAGING ADJACENT PAVEMENT. IF DAMAGED, THE PAVEMENT SHALL BE RESTORED AS NECESSARY TO MEET THE STANDARD PATCHING CRITERIA. RESTORATION LIMITS TO BE DETERMINED BY CITY CONSTRUCTION ENGINEER.

14872

MADISON, WI

9353

14872

14872

702-750 UNIVERSITY ROW

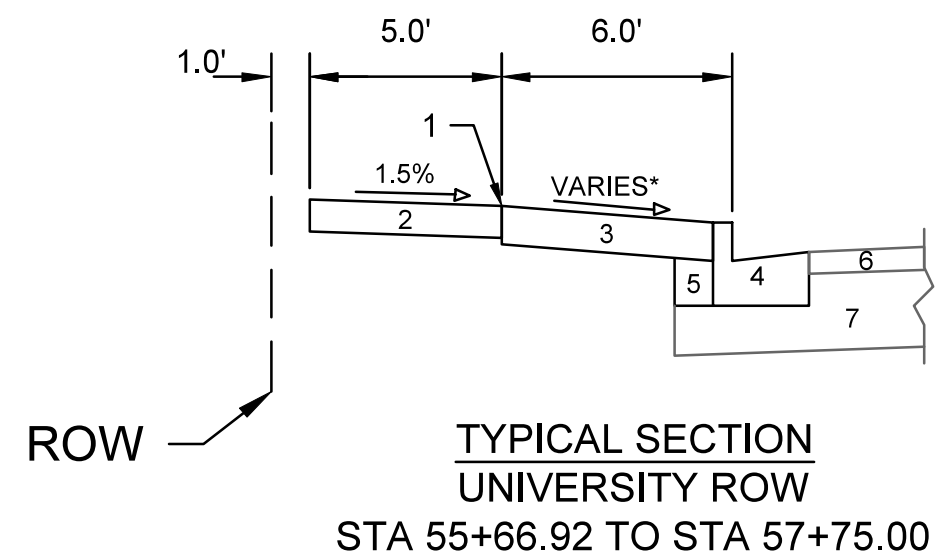
M:\DESIGN\Projects\14872\CAD\Streets\14872EN-Details.dwg

14872


D-1

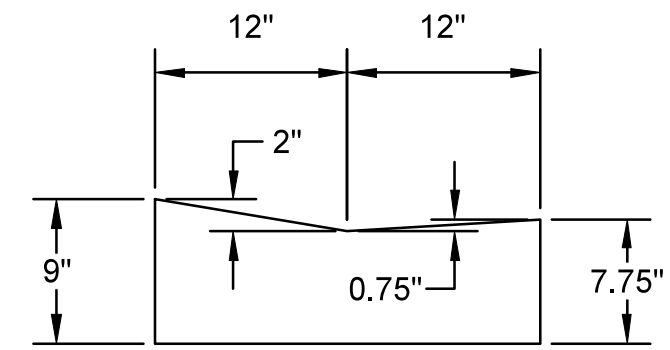
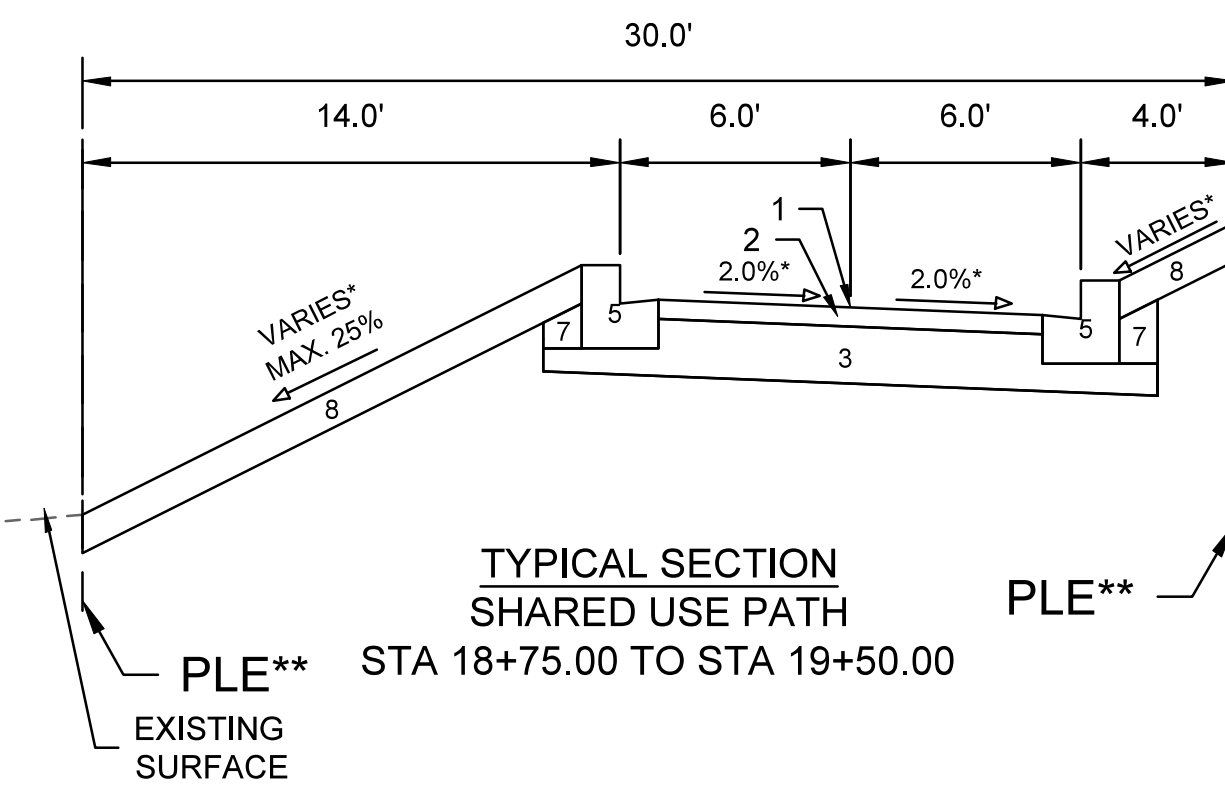
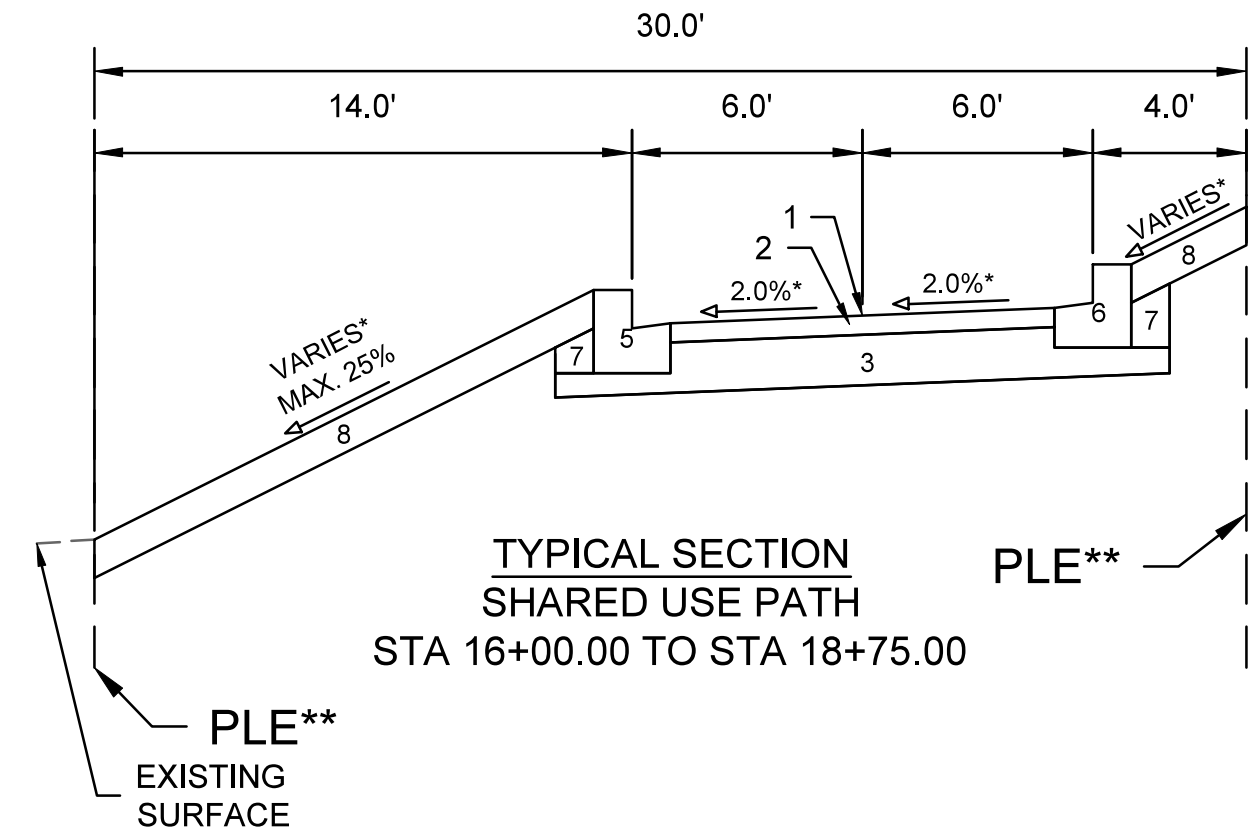
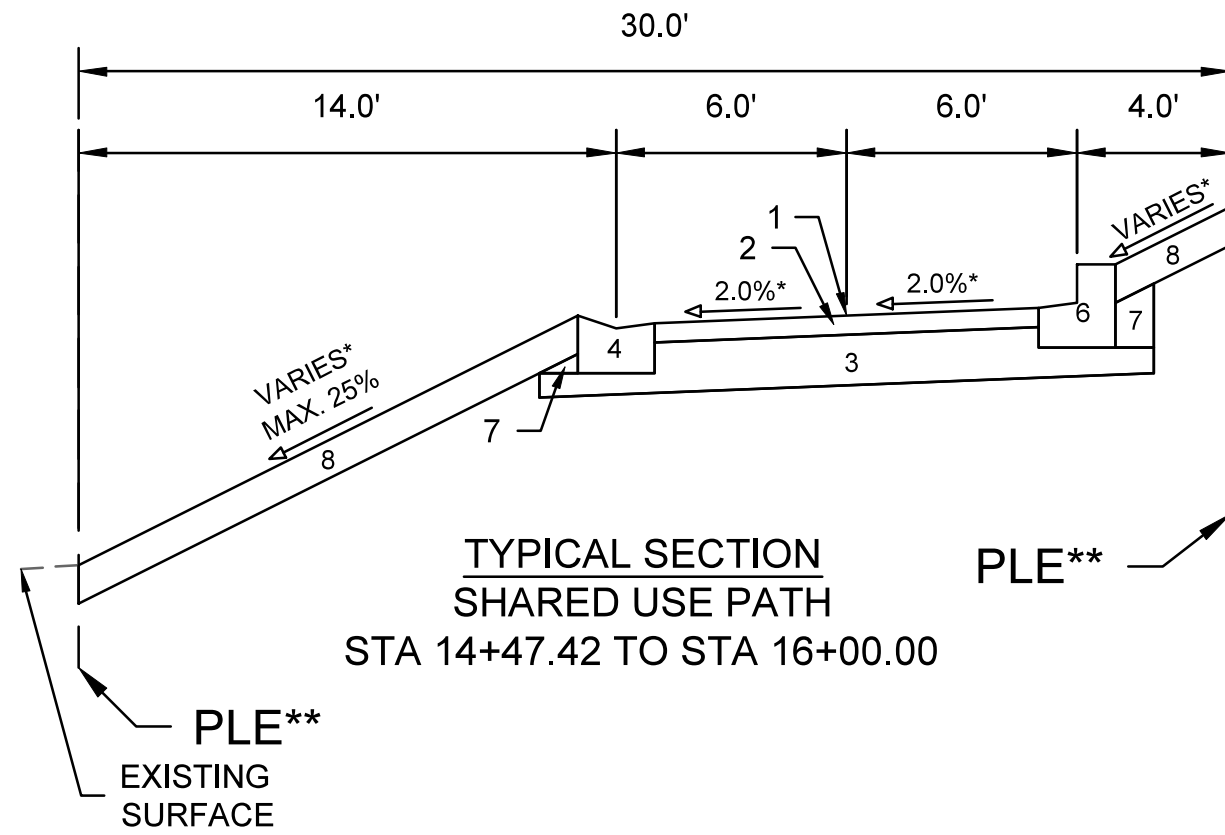
14872

D-1



* SEE P AND X SHEETS FOR WIDTHS AND CROSS SLOPES

	14872	D-2	
	TYPICAL SECTIONS		
	702-750 UNIVERSITY ROW		
	MADISON, WI		
	14872		
	CONTRACT NO: 9353		
	M:\DESIGN\Projects\14872\CAD\Streets\14872EN-Details.dwg		
	<div> <div>MARK</div> <div>REVISION</div> <div>DATE</div> <div>BY</div> </div>		
	<div> <div>Designed By: GCIT</div> <div>Date: 6/16/2025 2:55 PM</div> <div>Scale:</div> </div>		
	14872	D-2	

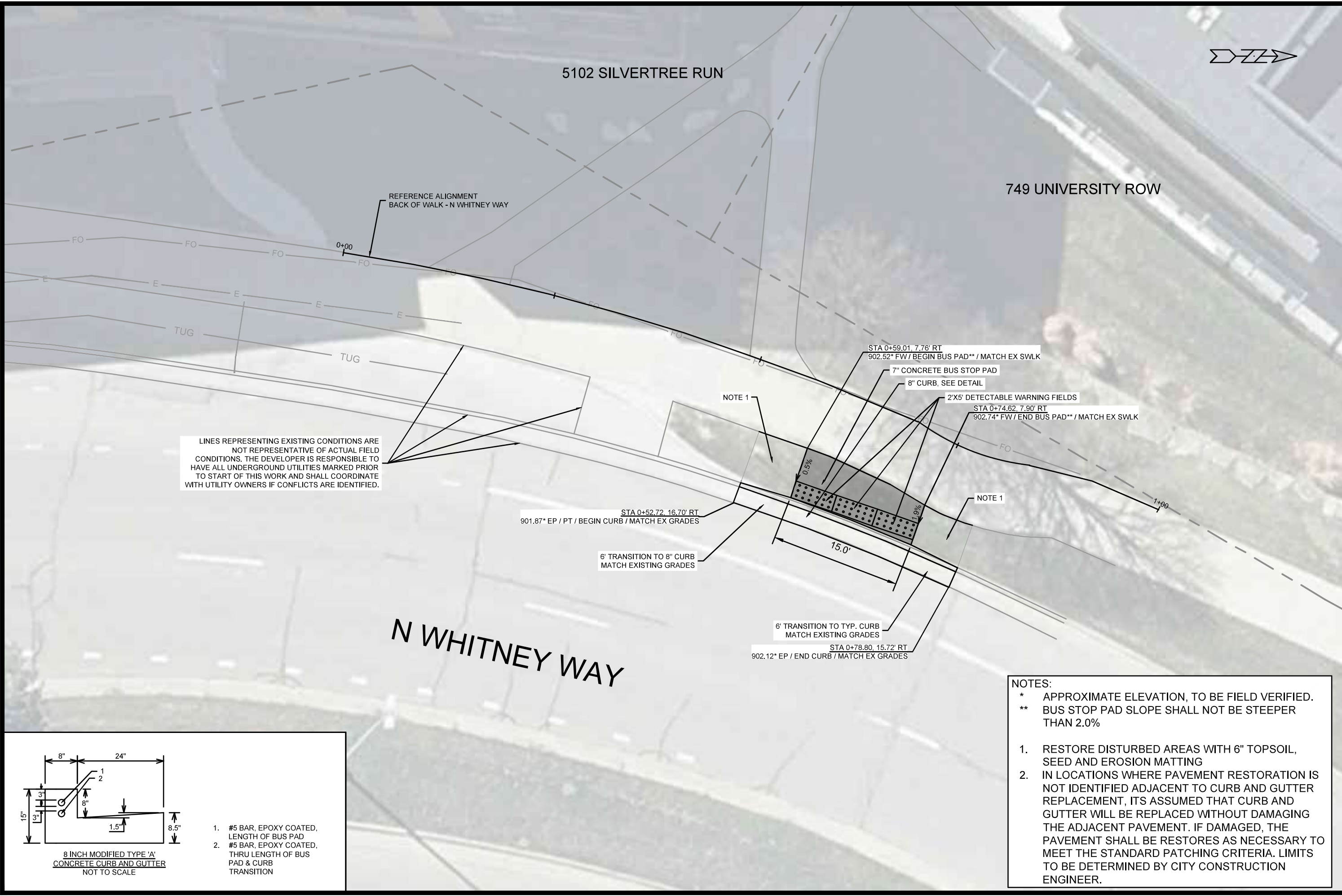


SPECIAL NOTES:

- * SEE P AND X SHEETS FOR WIDTHS AND CROSS SLOPES
- ** SEE DOC NO. 4834830 FOR PLE LOCATION

- ① POINT REFERRED TO ON PROFILE
- ② 3.0" H.M.A. PAVEMENT - TYPE 4 LT 58-28 S
- ③ 8" CRUSHED BASE COURSE GRADATION NO 2
- ④ CONCRETE CURB AND GUTTER TYPE 'H' - MODIFIED
- ⑤ CONCRETE CURB AND GUTTER TYPE 'H'
- ⑥ FILL
- ⑦ 6" TOPSOIL, SEED AND MATTING

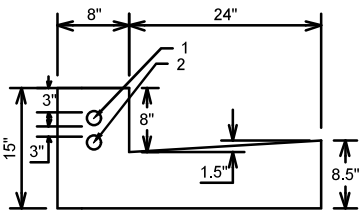
TYPICAL SECTIONS 702-750 UNIVERSITY ROW <small>M:\DESIGN\Projects\14872\CAD\Streets\14872EN-Details.dwg</small>	14872	MADISON, WI	9353	CONTRACT NO:
	14872			
	D-3			



LINES REPRESENTING EXISTING CONDITIONS ARE NOT REPRESENTATIVE OF ACTUAL FIELD CONDITIONS. THE DEVELOPER IS RESPONSIBLE TO HAVE ALL UNDERGROUND UTILITIES MARKED PRIOR TO START OF THIS WORK AND SHALL COORDINATE WITH UTILITY OWNERS IF CONFLICTS ARE IDENTIFIED.

NOTE 1

NOTE 1



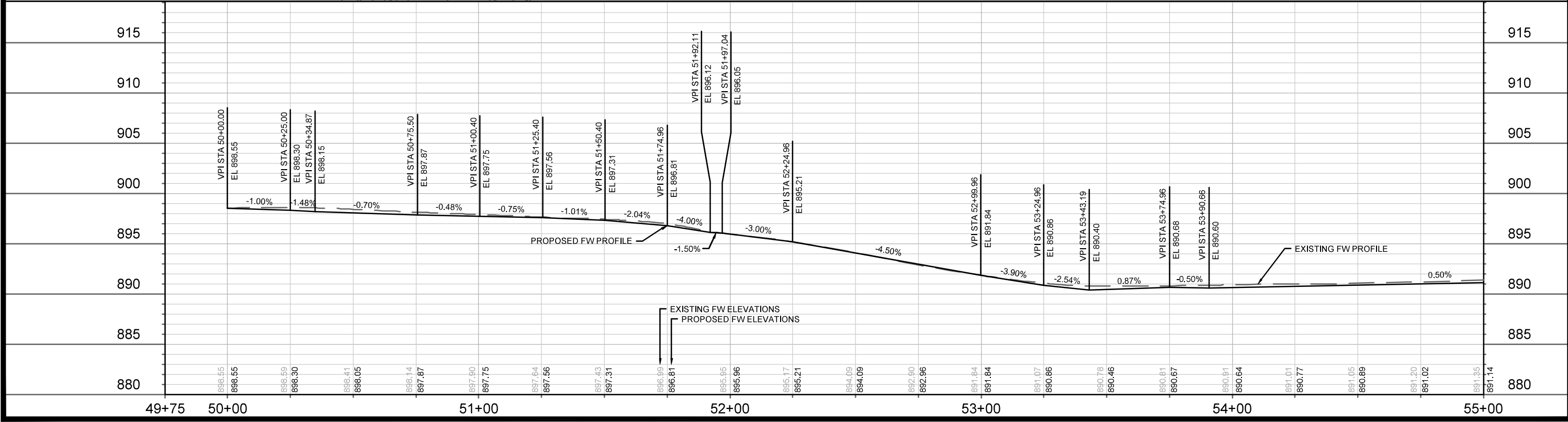
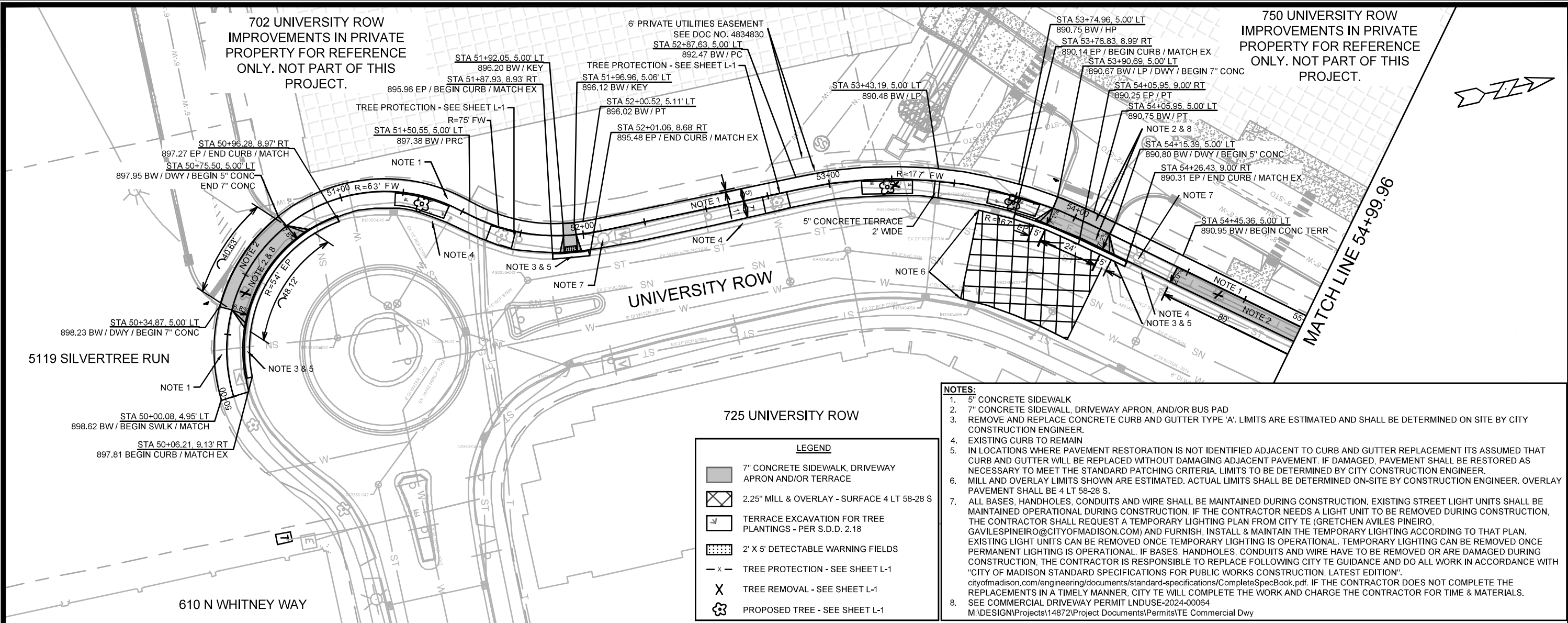
8 INCH MODIFIED TYPE 'A' CONCRETE CURB AND GUTTER NOT TO SCALE

- 1. #5 BAR, EPOXY COATED, LENGTH OF BUS PAD
- 2. #5 BAR, EPOXY COATED, THRU LENGTH OF BUS PAD & CURB TRANSITION

NOTES:
* APPROXIMATE ELEVATION, TO BE FIELD VERIFIED.
** BUS STOP PAD SLOPE SHALL NOT BE STEEPER THAN 2.0%

1. RESTORE DISTURBED AREAS WITH 6" TOPSOIL, SEED AND EROSION MATTING
2. IN LOCATIONS WHERE PAVEMENT RESTORATION IS NOT IDENTIFIED ADJACENT TO CURB AND GUTTER REPLACEMENT, ITS ASSUMED THAT CURB AND GUTTER WILL BE REPLACED WITHOUT DAMAGING THE ADJACENT PAVEMENT. IF DAMAGED, THE PAVEMENT SHALL BE RESTORES AS NECESSARY TO MEET THE STANDARD PATCHING CRITERIA. LIMITS TO BE DETERMINED BY CITY CONSTRUCTION ENGINEER.

14872		MADISON, WI		9353	
BUS PAD DETAIL - N WHITNEY WAY		702-750 UNIVERSITY ROW		CONTRACT NO:	
14872		D-4		D-4	
M:\DESIGN\Projects\14872\CAD\Streets\14872EN-Details.dwg		14872		14872	
MARK		REVISION		DATE	
Designed By: GCIT		Drawn: 6/16/2025 2:55 PM		BY	
14872		14872		14872	



DATE	BY
6/17/2025	7:27 AM

Scale: 1" = 40'

14872

14872

MADISON, WI

9353

CONTRACT NO:

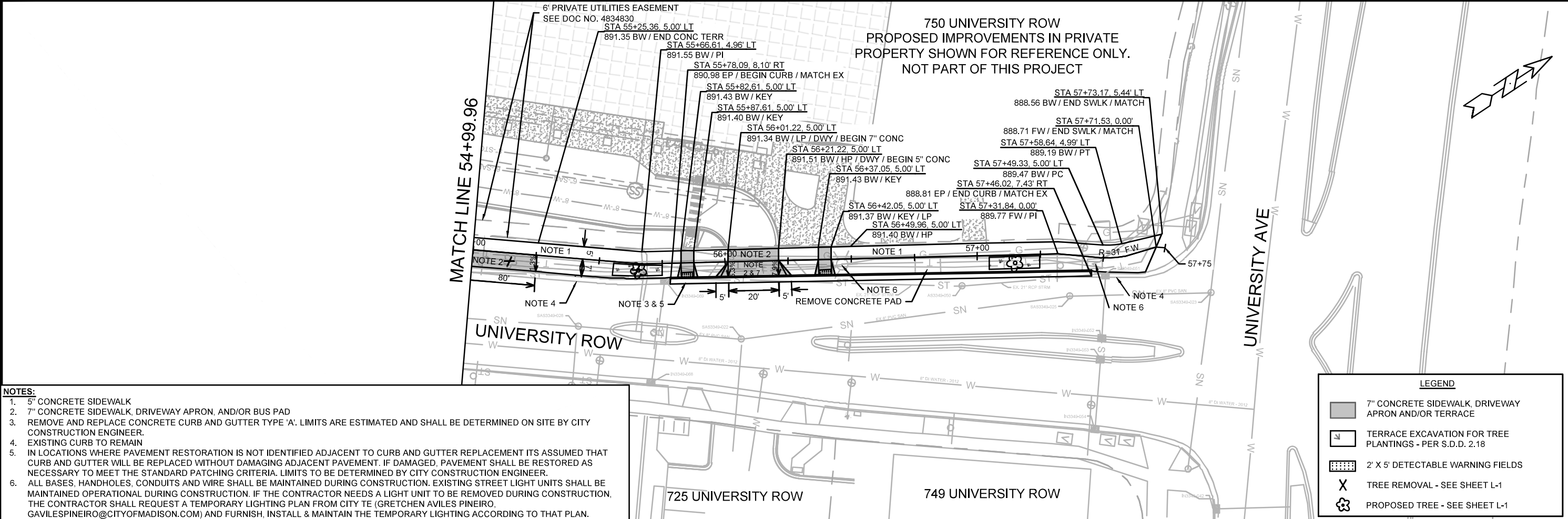
PLAN & PROFILE - UNIVERSITY ROW

702-750 UNIVERSITY ROW

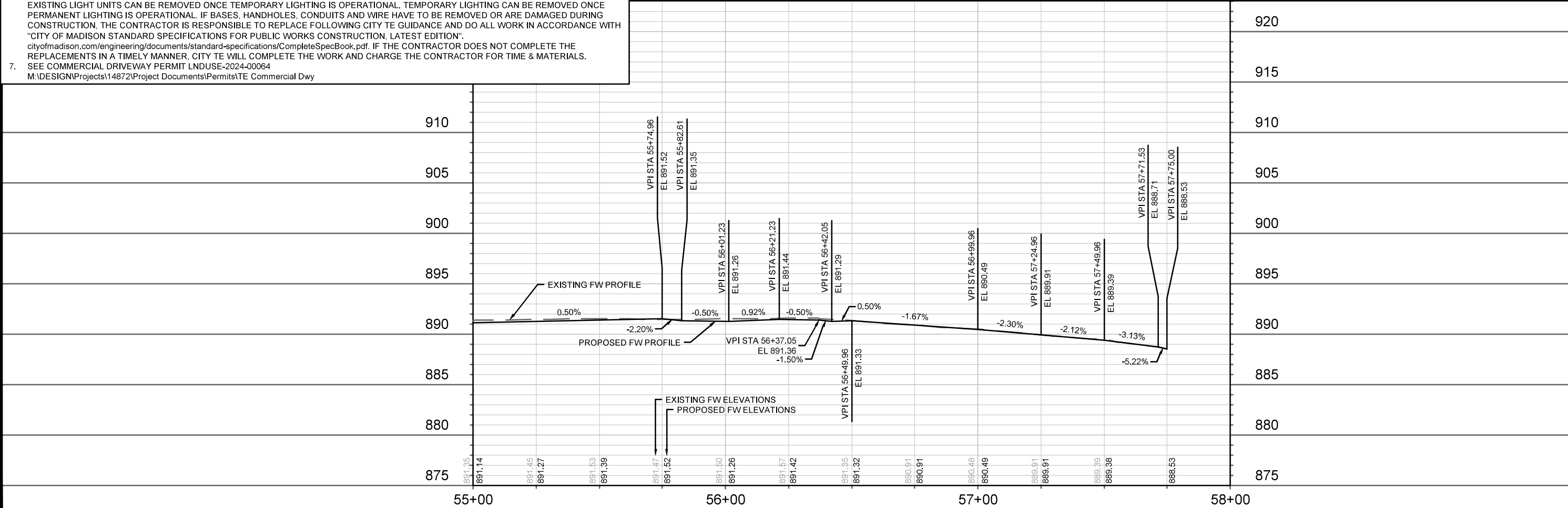
M:\DESIGN\Projects\14872\CAD\Streets\14872EN-PnP.dwg

14872

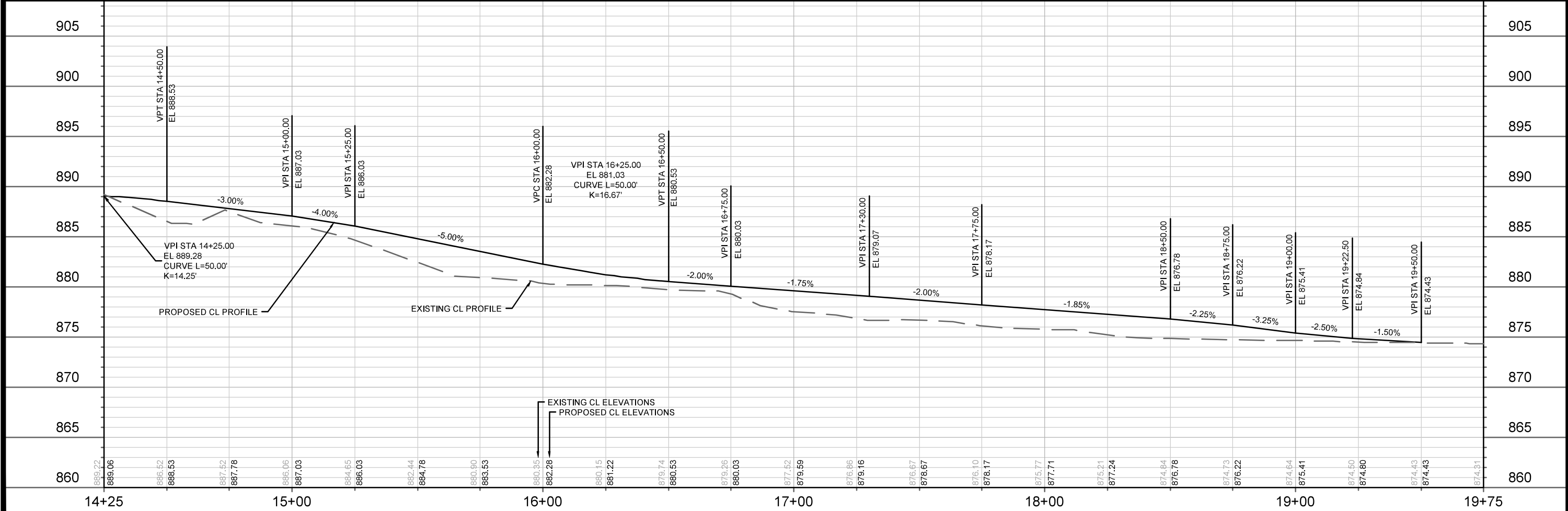
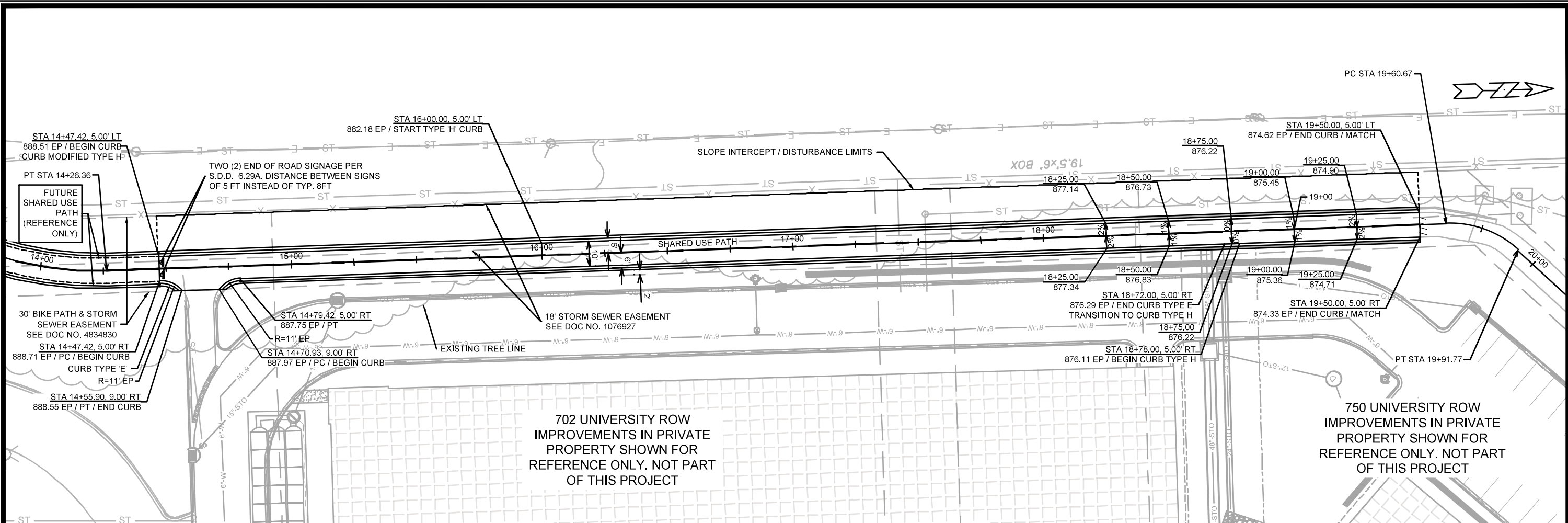
P-1



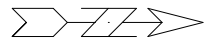
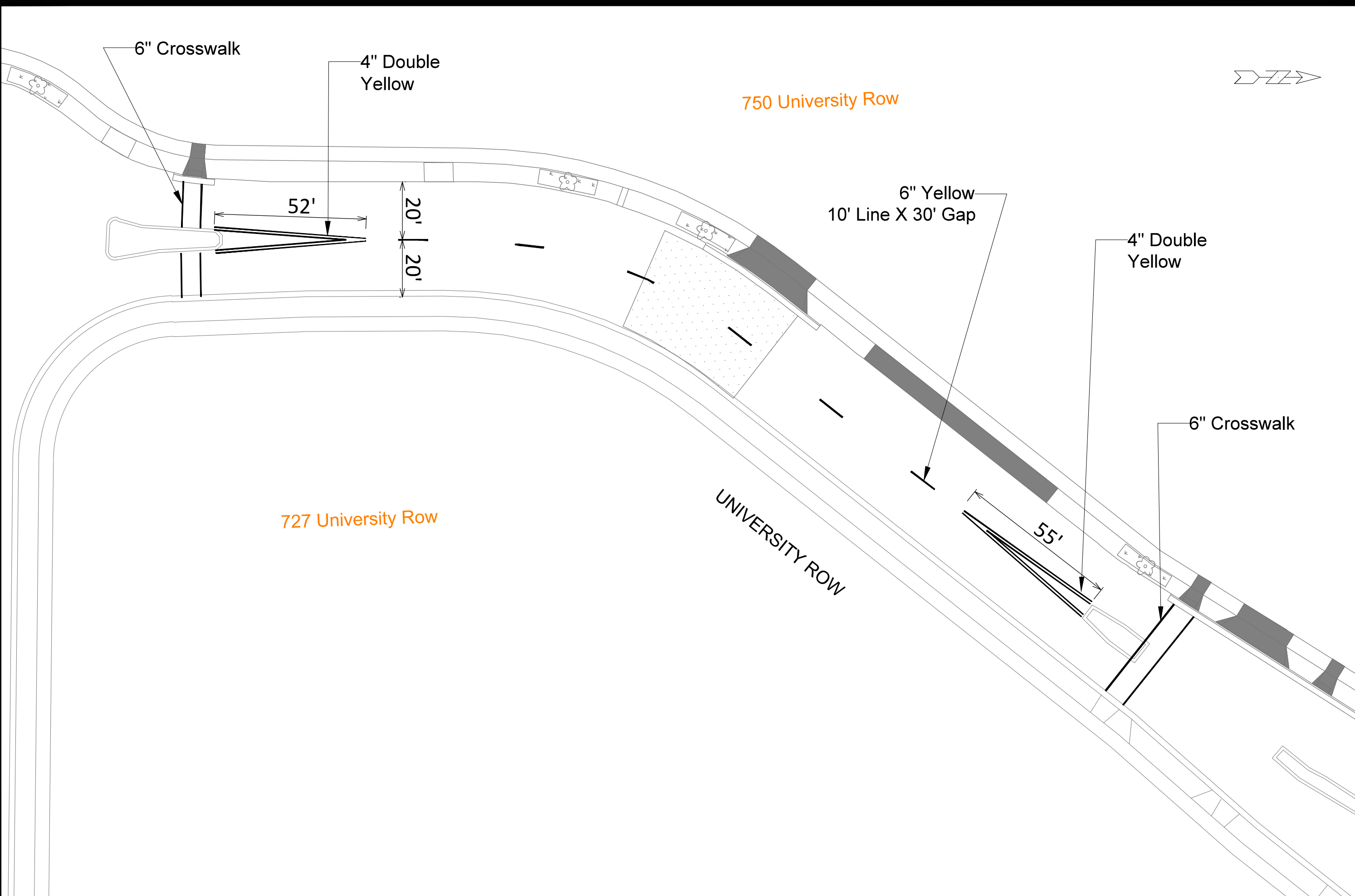
- NOTES:**
- 5' CONCRETE SIDEWALK
 - 7' CONCRETE SIDEWALK, DRIVEWAY APRON, AND/OR BUS PAD
 - REMOVE AND REPLACE CONCRETE CURB AND GUTTER TYPE 'A'. LIMITS ARE ESTIMATED AND SHALL BE DETERMINED ON SITE BY CITY CONSTRUCTION ENGINEER.
 - EXISTING CURB TO REMAIN
 - IN LOCATIONS WHERE PAVEMENT RESTORATION IS NOT IDENTIFIED ADJACENT TO CURB AND GUTTER REPLACEMENT ITS ASSUMED THAT CURB AND GUTTER WILL BE REPLACED WITHOUT DAMAGING ADJACENT PAVEMENT. IF DAMAGED, PAVEMENT SHALL BE RESTORED AS NECESSARY TO MEET THE STANDARD PATCHING CRITERIA. LIMITS TO BE DETERMINED BY CITY CONSTRUCTION ENGINEER.
 - ALL BASES, HANDHOLES, CONDUITS AND WIRE SHALL BE MAINTAINED DURING CONSTRUCTION. EXISTING STREET LIGHT UNITS SHALL BE MAINTAINED OPERATIONAL DURING CONSTRUCTION. IF THE CONTRACTOR NEEDS A LIGHT UNIT TO BE REMOVED DURING CONSTRUCTION, THE CONTRACTOR SHALL REQUEST A TEMPORARY LIGHTING PLAN FROM CITY TE (GRETCHEN AVILES PINEIRO, GAVILESPINEIRO@CITYOFMADISON.COM) AND FURNISH, INSTALL & MAINTAIN THE TEMPORARY LIGHTING ACCORDING TO THAT PLAN. EXISTING LIGHT UNITS CAN BE REMOVED ONCE TEMPORARY LIGHTING IS OPERATIONAL. TEMPORARY LIGHTING CAN BE REMOVED ONCE PERMANENT LIGHTING IS OPERATIONAL. IF BASES, HANDHOLES, CONDUITS AND WIRE HAVE TO BE REMOVED OR ARE DAMAGED DURING CONSTRUCTION, THE CONTRACTOR IS RESPONSIBLE TO REPLACE FOLLOWING CITY TE GUIDANCE AND DO ALL WORK IN ACCORDANCE WITH "CITY OF MADISON STANDARD SPECIFICATIONS FOR PUBLIC WORKS CONSTRUCTION, LATEST EDITION".
cityofmadison.com/engineering/documents/standard-specifications/CompleteSpecBook.pdf. IF THE CONTRACTOR DOES NOT COMPLETE THE REPLACEMENTS IN A TIMELY MANNER, CITY TE WILL COMPLETE THE WORK AND CHARGE THE CONTRACTOR FOR TIME & MATERIALS.
 - SEE COMMERCIAL DRIVEWAY PERMIT LNDUSE-2024-00064
M:\DESIGN\Projects\14872\Project Documents\Permits\TE Commercial Dwy




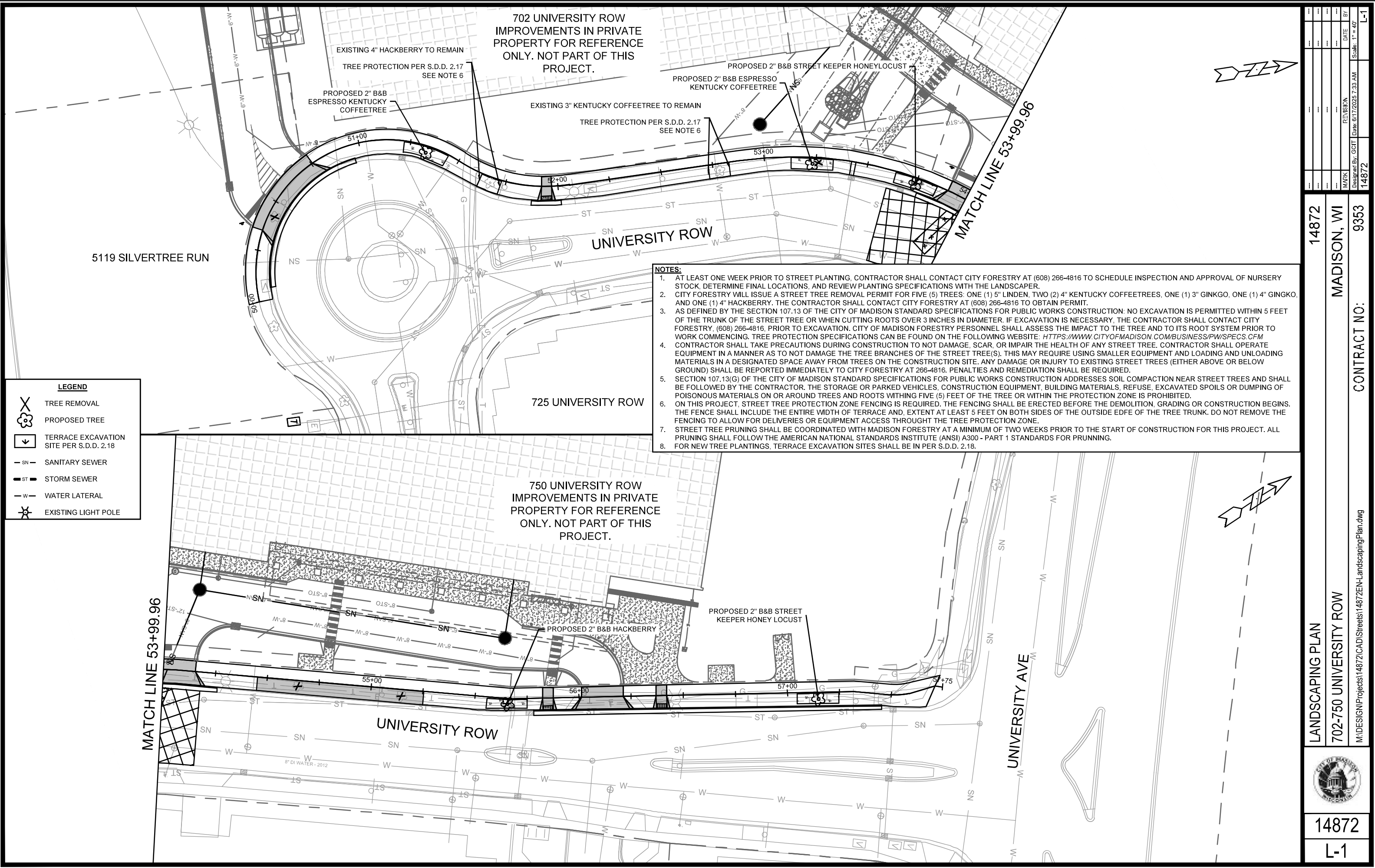
14872	MADISON, WI	9353	CONTRACT NO:
PLAN & PROFILE - UNIVERSITY ROW			
702-750 UNIVERSITY ROW			
M:\DESIGN\Projects\14872\CAD\Streets\14872EN-PnP.dwg			
14872			
P-2			



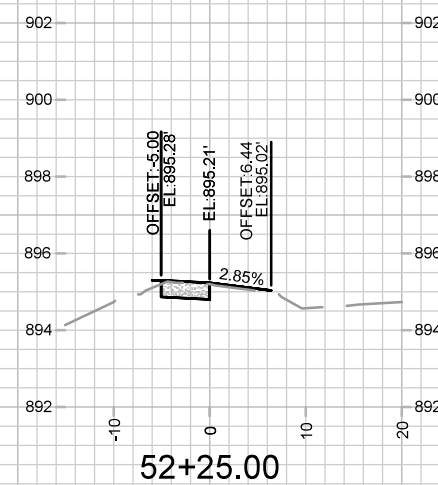
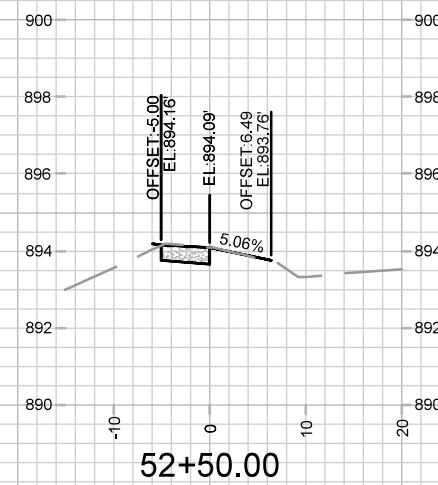
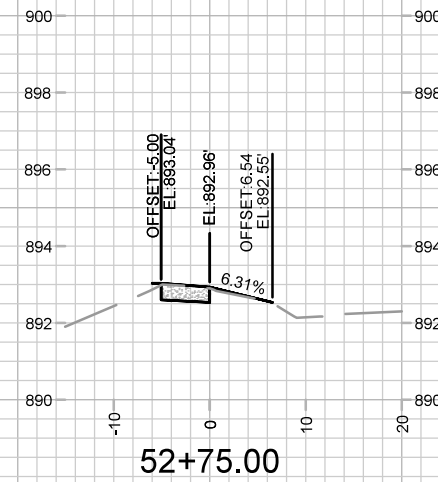
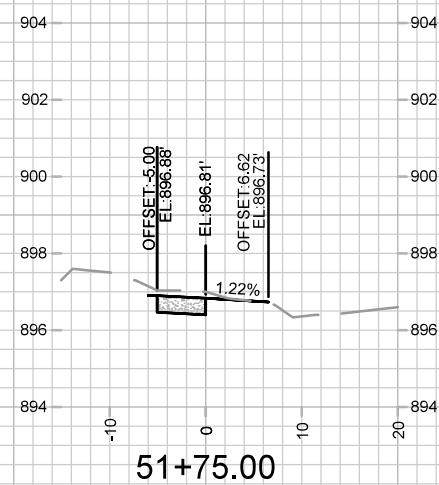
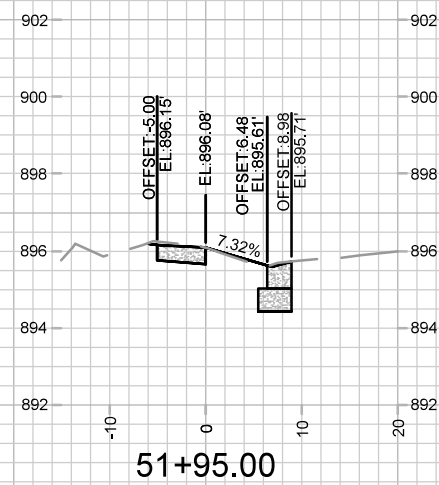
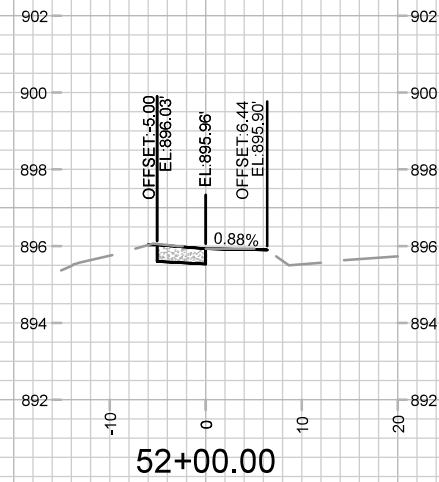
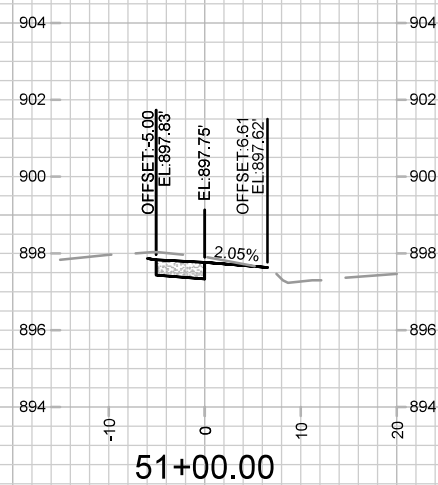
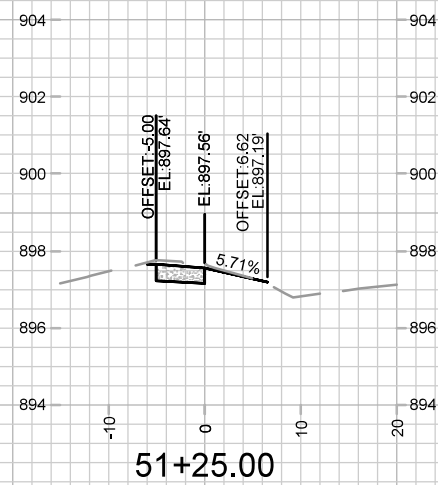
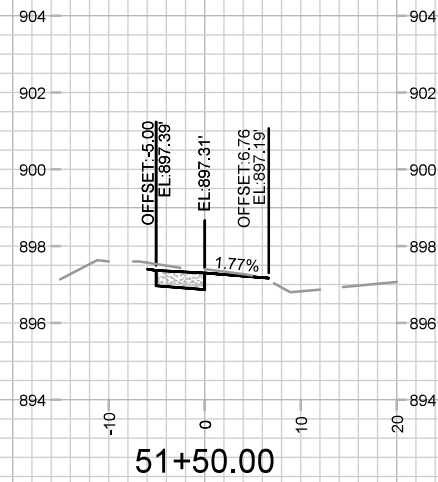
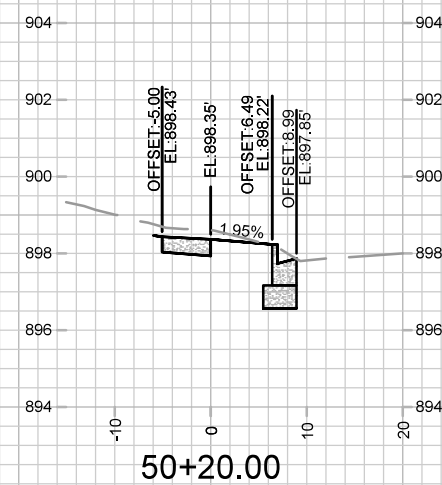
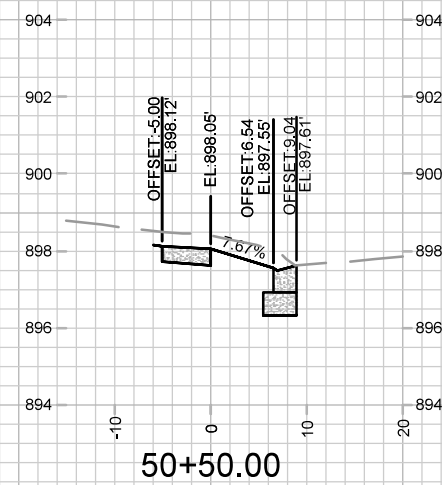
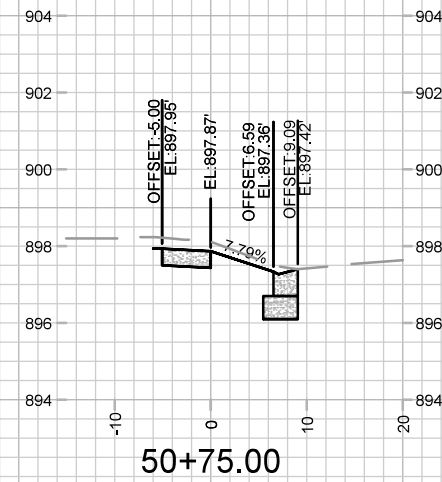
14872	MADISON, WI	9353	CONTRACT NO:
14872	702-750 UNIVERSITY ROW		
14872	P-3		



	PAVEMENT MARKING PLAN		14872	MADISON, WI	CONTRACT NO: 9353	M:\DESIGN\Projects\14872\CAD\Traffic\14872TE-PavementMarking.dwg	BY DATE Scale: 1:30	PM-1			
	702-750 UNIVERSITY ROW										
14872			14872		14872			PM-1			
PM-1											



14872		MADISON, WI		9353	
LANDSCAPING PLAN		702-750 UNIVERSITY ROW		CONTRACT NO.:	
M:\DESIGN\Projects\14872\CAD\Streets\14872EN-LandscapingPlan.dwg					
14872		L-1			
DATE: 6/17/2025 7:33 AM		REVISION		BY	
Scale: 1" = 40'					



14872

CROSS SECTIONS - UNIVERSITY ROW

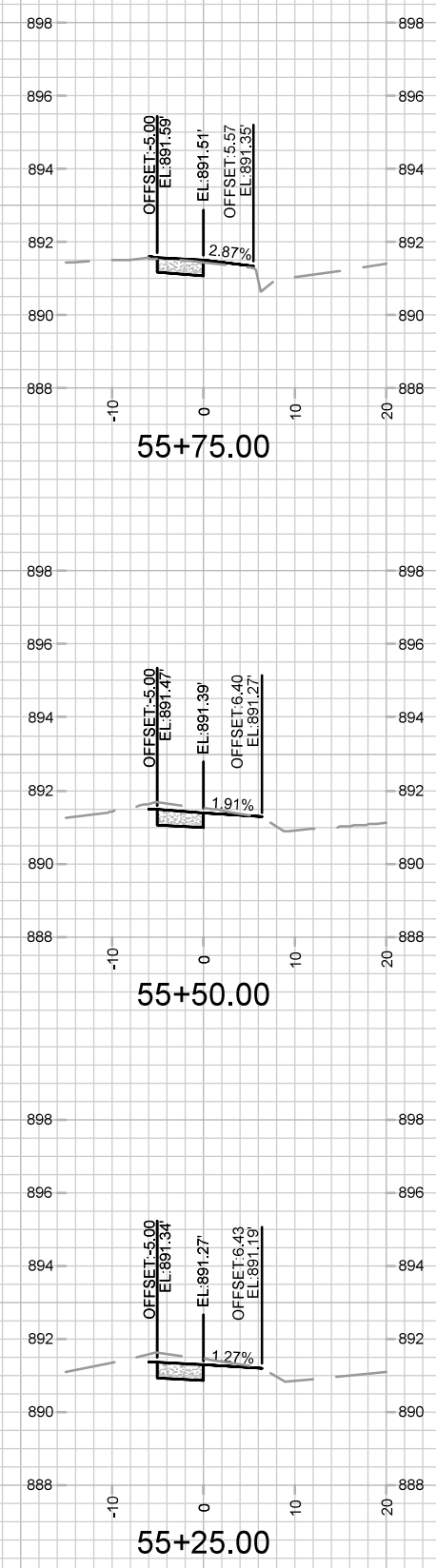
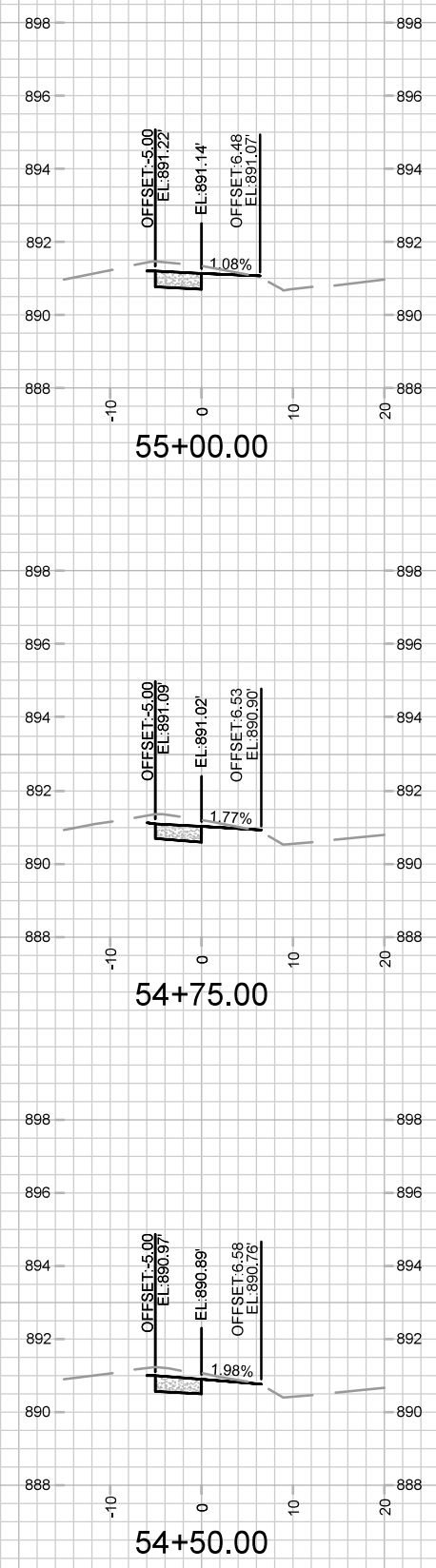
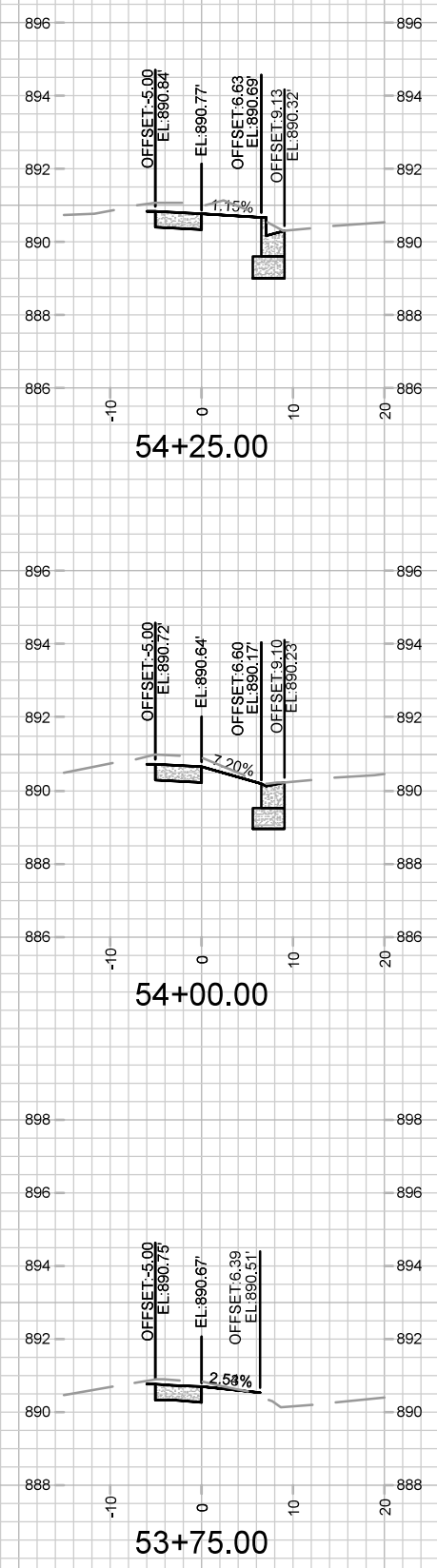
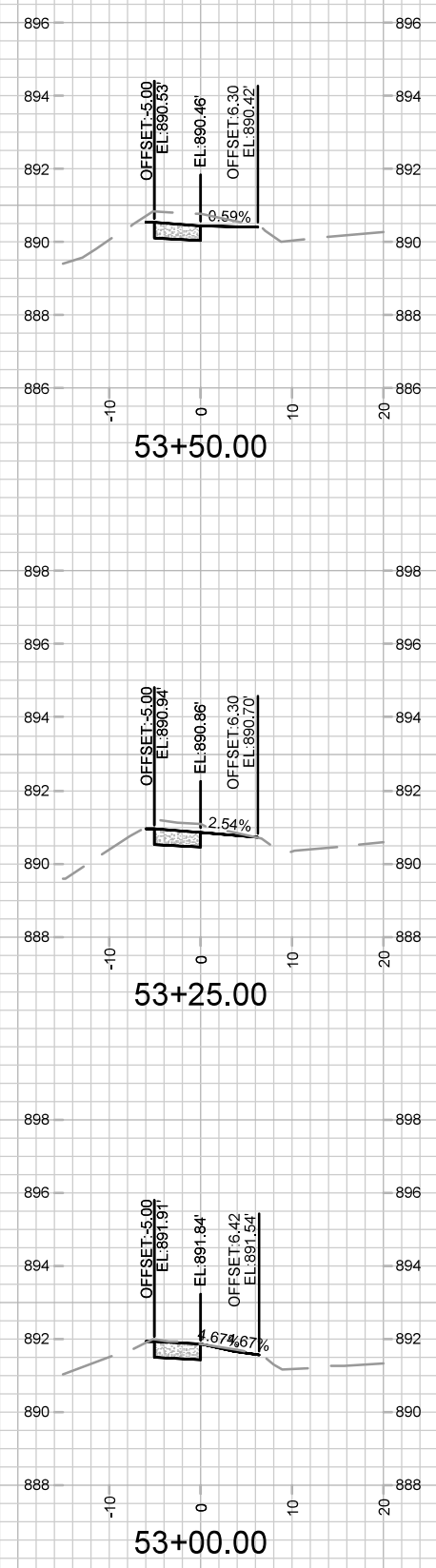
14872	MADISON, WI	9353
CONTRACT NO:		


MATK	REVISION	DATE	BY

Designed By: GCIT
14872

Date: 6/17/2025 7:31 AM

Scale: 1" = 20'
X-1





14872
X-2

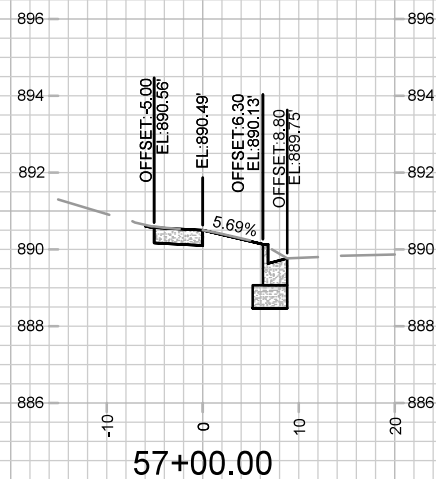
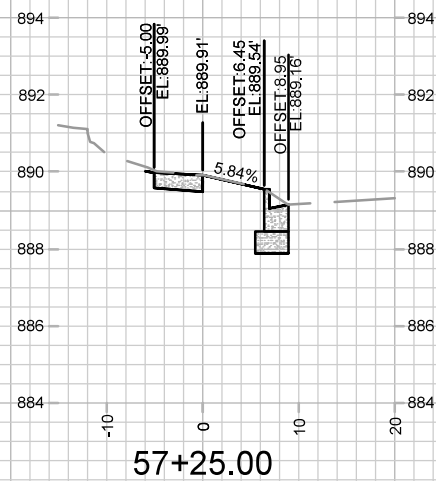
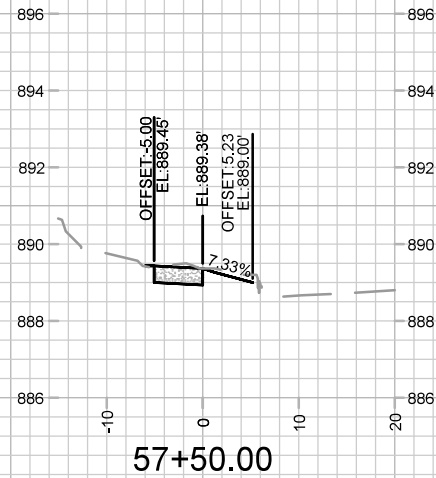
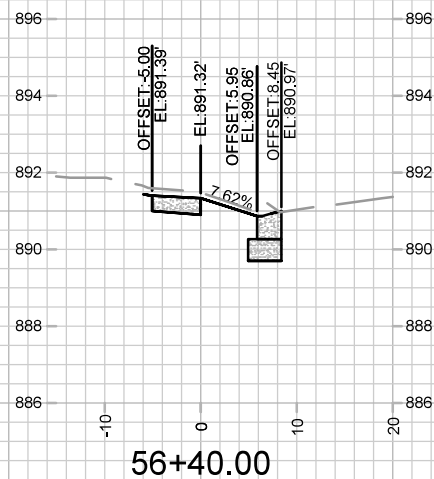
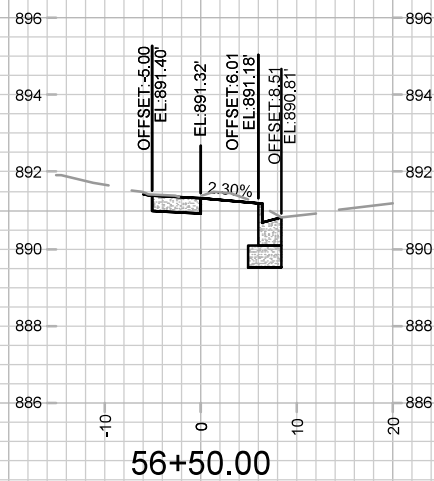
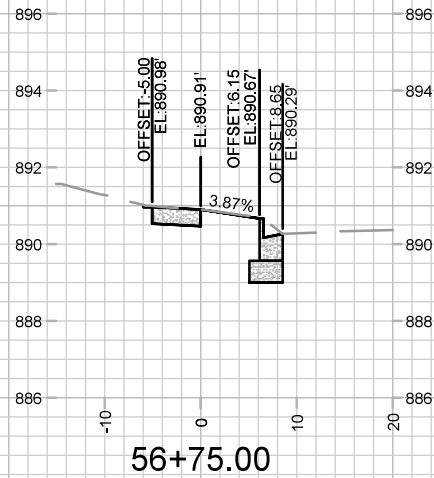
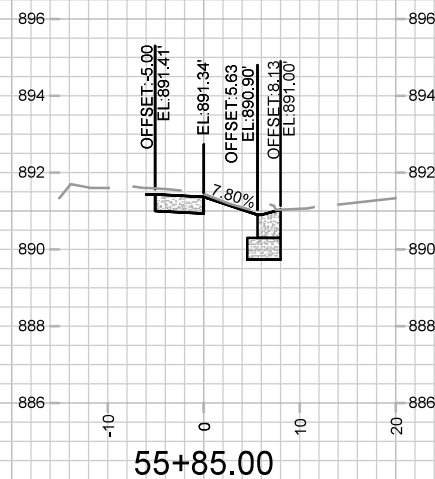
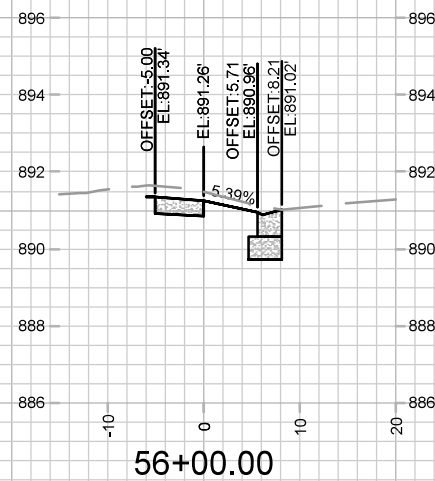
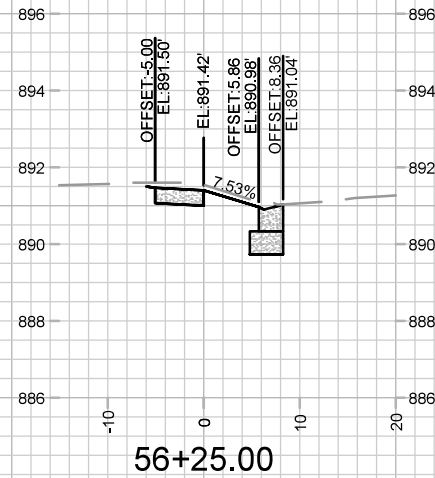
CROSS SECTIONS - UNIVERSITY ROW
702-750 UNIVERSITY ROW

14872
MADISON, WI
9353
CONTRACT NO:

MARK	REVISION	DATE	BY
---	---	---	---
---	---	---	---
---	---	---	---
---	---	---	---

Designed By: GCIT Date: 6/17/2025 7:31 AM
Scale: 1" = 20'

14872
X-2

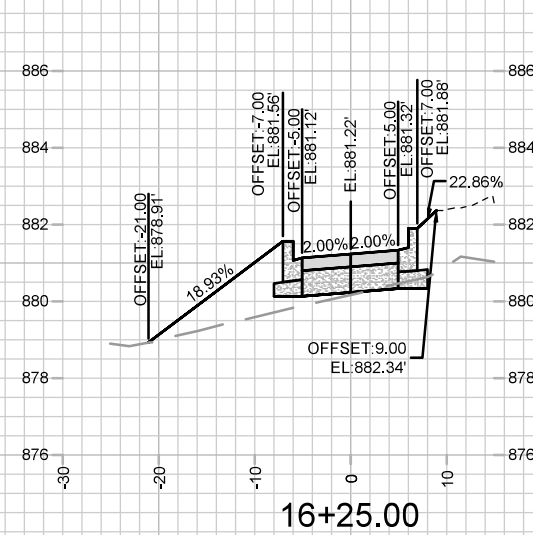
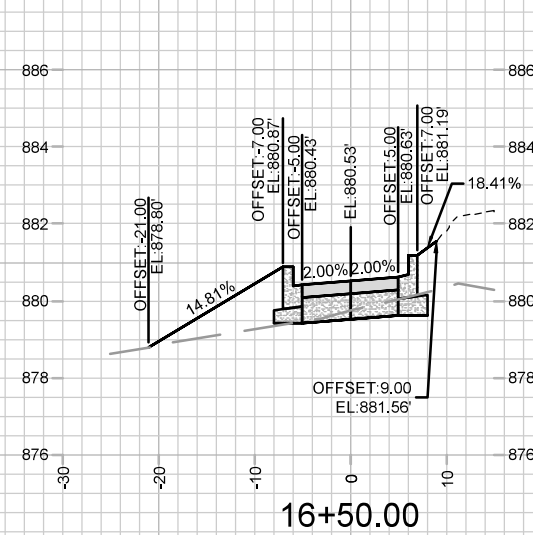
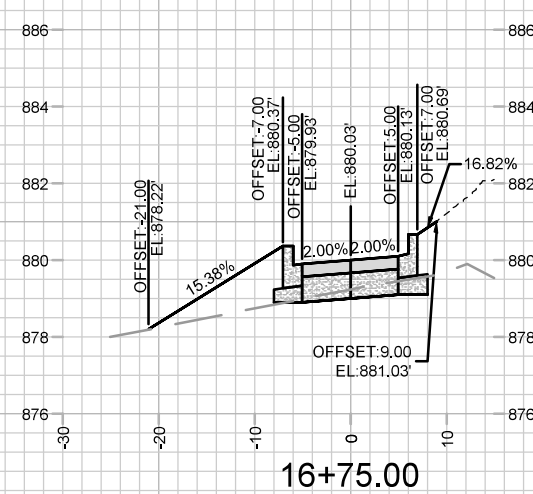
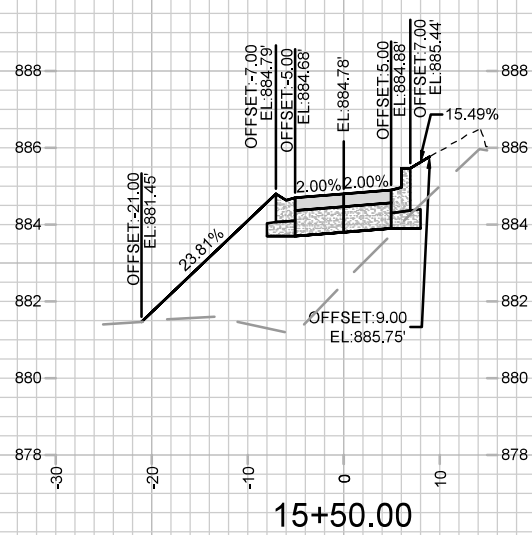
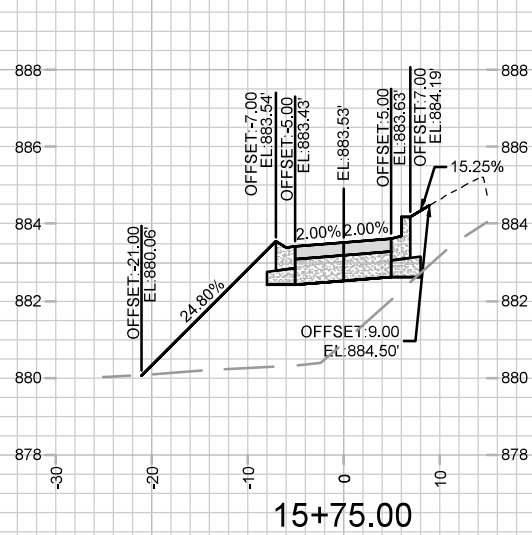
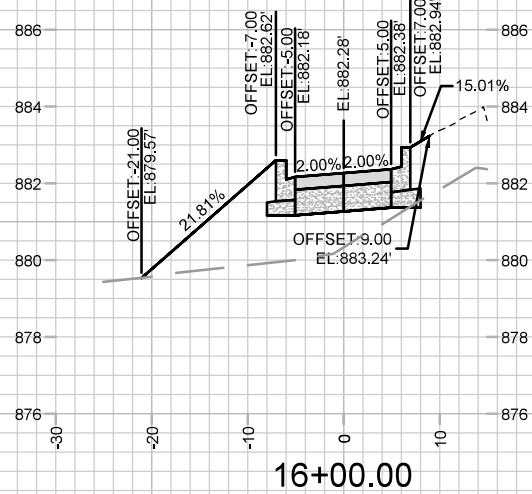
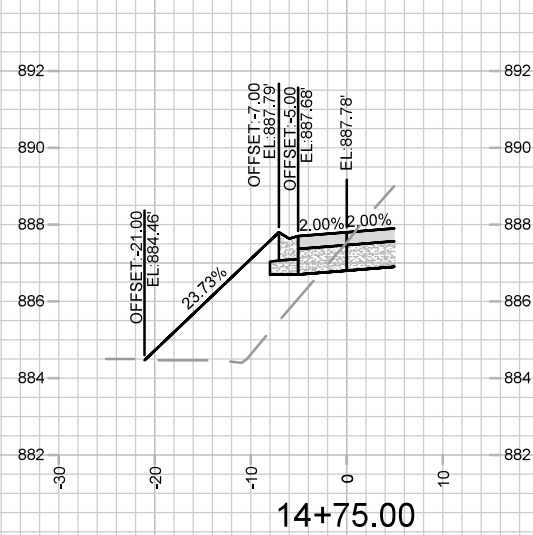
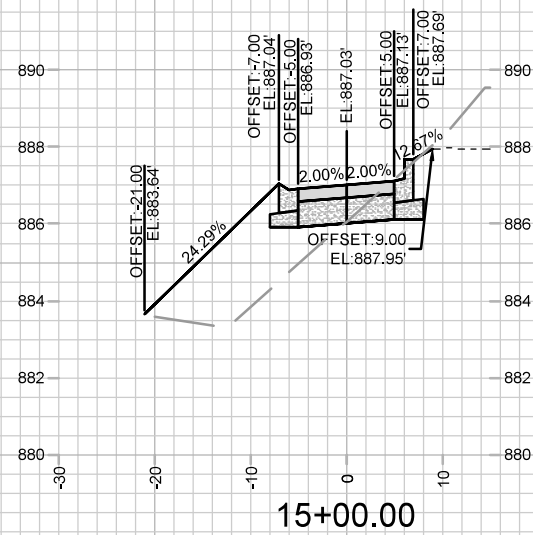
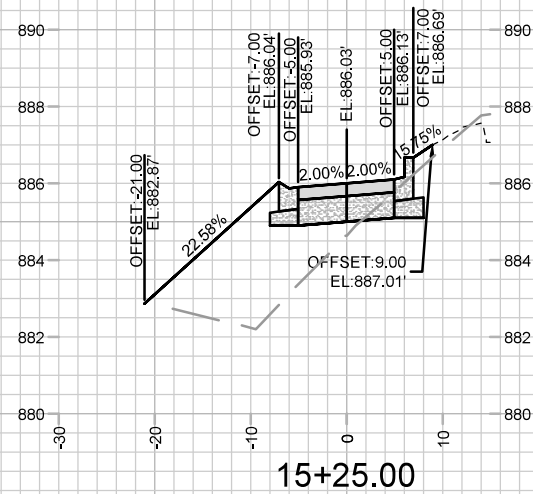


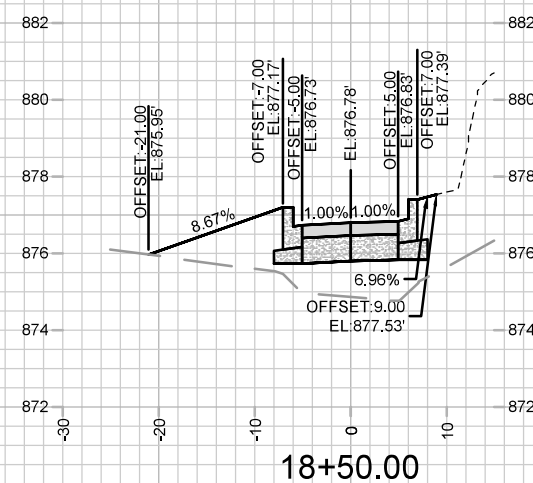
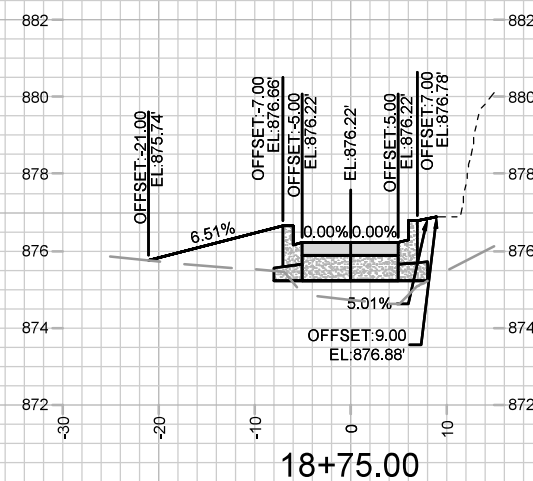
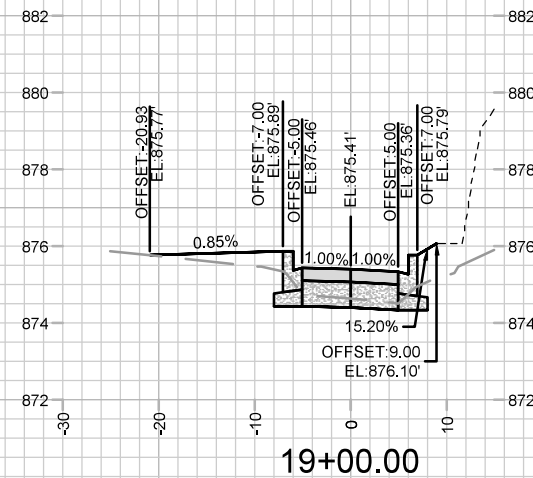
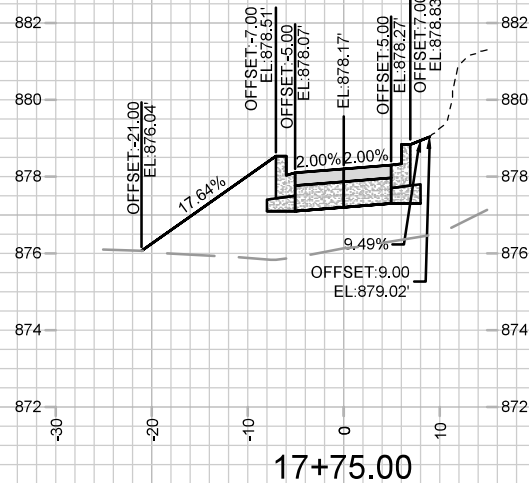
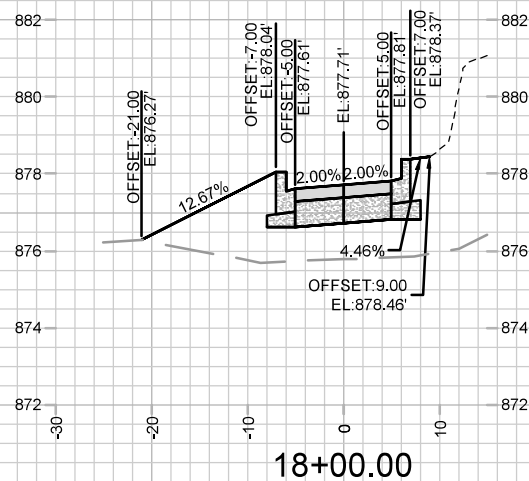
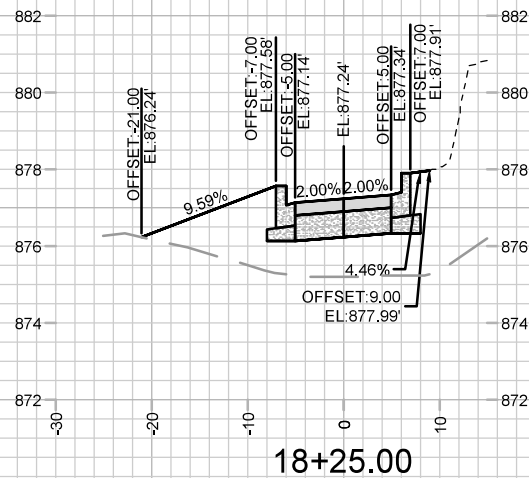
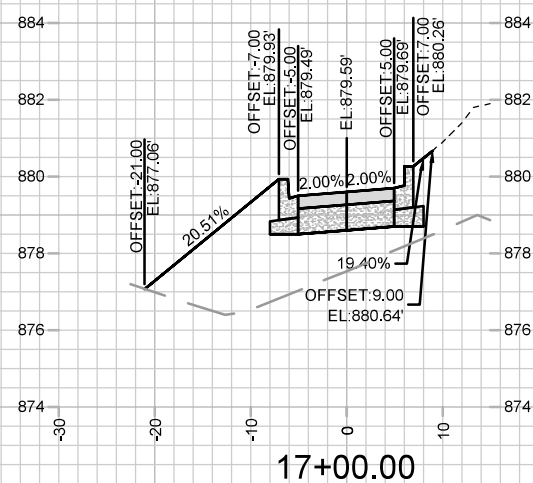
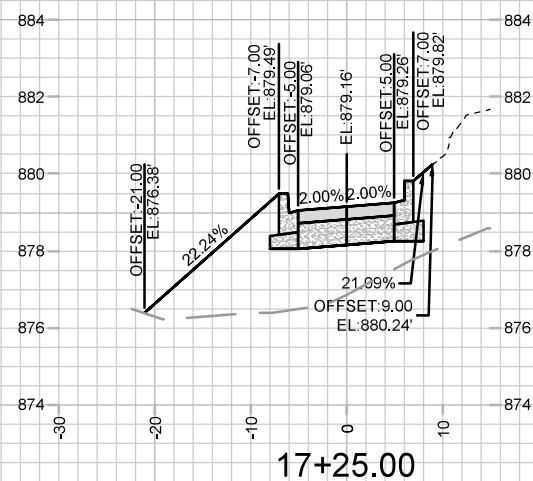
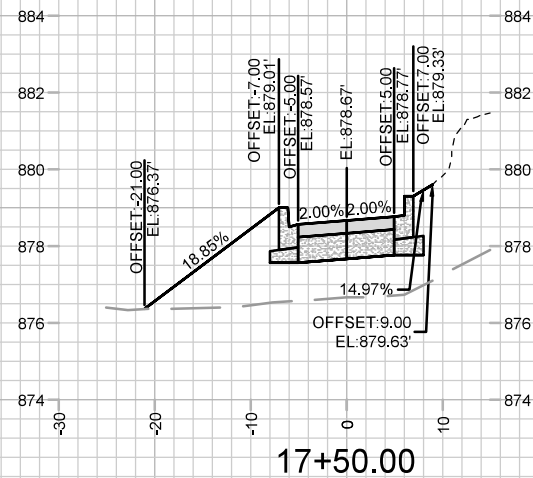
14872
X-3

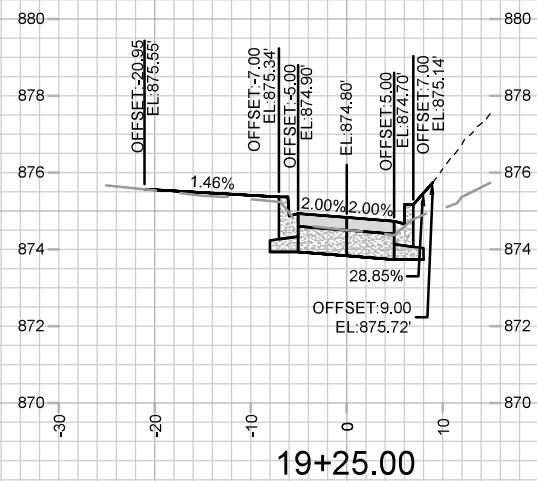
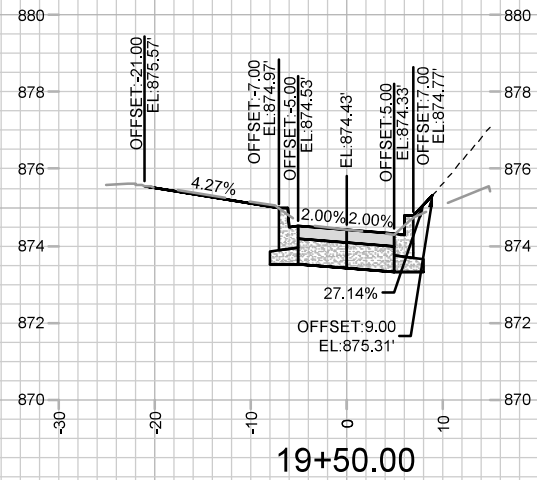
CROSS SECTIONS - UNIVERSITY ROW
702-750 UNIVERSITY ROW

14872
MADISON, WI
CONTRACT NO: 9353

MARK	REVISION	DATE	BY
14872	Designed By: GCIT	Date: 6/17/2025 7:31 AM	Scale: 1" = 20'







MARK	REVISION	DATE	BY
14872	14872	6/17/2025 7:32 AM	X-6

CROSS SECTIONS - SHARED USE PATH
702-750 UNIVERSITY ROW
M:\DESIGN\Projects\14872\CAD\Streets\14872EN-Xsections.dwg



14872
X-6

