



Madison, Wisconsin

CITY OF MADISON

CITY ENGINEERING DIVISION

DEPARTMENT OF PUBLIC WORKS

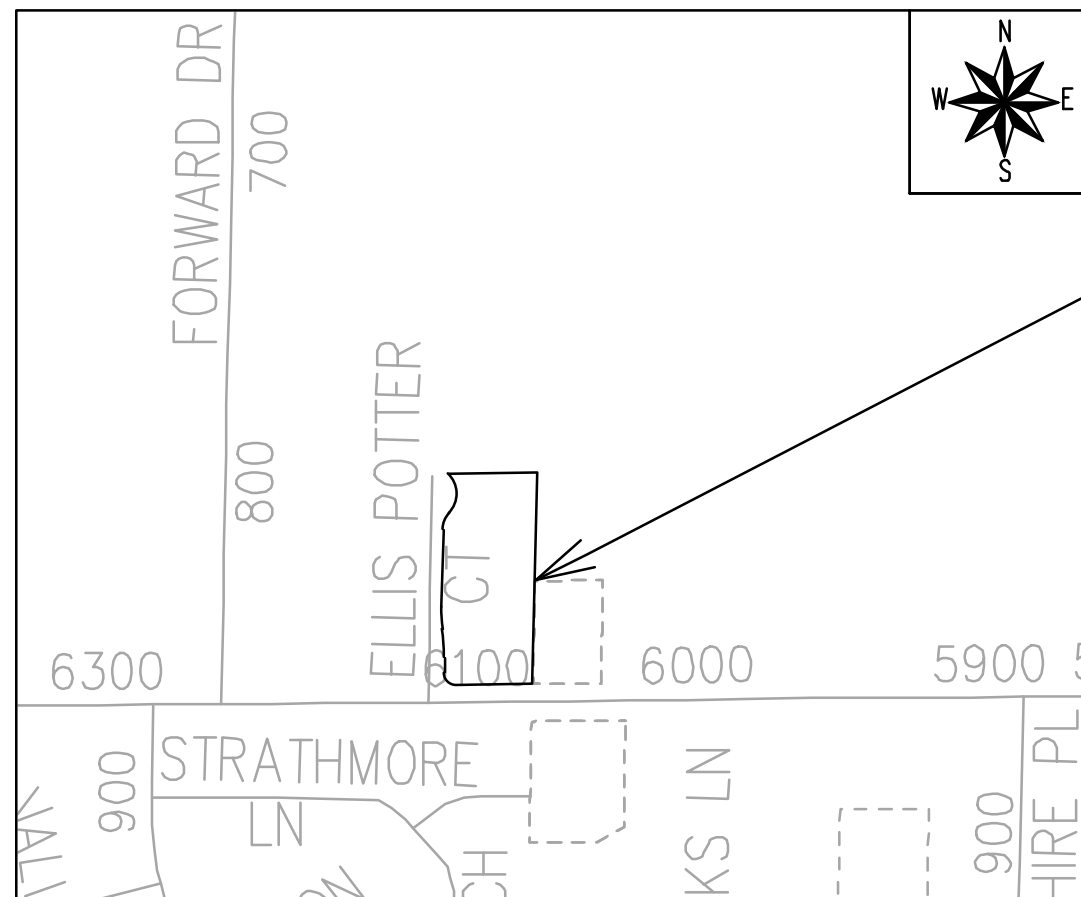
PLAN OF PROPOSED IMPROVEMENT

INDEX OF SHEETS

SHEET NO. D1	STANDARD NOTES
SHEET NO. D2	TYPICAL SECTIONS
SHEET NO. D3	MEDIAN DETAIL
SHEET NO. P1	PLAN & PROFILE
SHEET NO. U1	UTILITY PLAN
SHEET NO. PM1	PAVEMENT MARKING PLAN
SHEET NO. L1	LANDSCAPING PLAN
SHEET NO. X1-X2	CROSS SECTIONS
SHEET NO. MN1	MAINTENANCE PLAN (CITY USE ONLY)

1 & 15 ELLIS POTTER COURT

CITY PROJECT NO. 15157
CONTRACT NO. 9514



PROJECT LOCATION

WATER
DESIGNED BY:

LATERAL ONLY

PUBLIC IMPROVEMENT PROJECT
APPROVED

JUNE 18, 2024

BY THE COMMON COUNCIL
OF MADISON, WISCONSIN

PUBLIC IMPROVEMENT DESIGN
APPROVED BY:

05/16/2025

City Engineer

Date

STREET
DESIGNED BY:



05/16/2025

PAVEMENT MARKINGS
DESIGNED BY:



05/16/2025

SANITARY AND STORM SEWER
DESIGNED BY:

LATERAL ONLY

REVISION 1 - 08/05/25
- REPLACED SHEETS: P1, U1, L1

REVISION 2 - 04/03/26
- REPLACED SHEETS: P1, L1, X1-X2

FILE NAME: M:\DESIGN\Project\15157\CAD\Streets\15157FN-TWK\Sheet.dwg DATE: 4/30/2025 7:29 AM

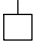
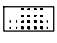

THE LOCATION AND INFORMATION FOR PROPOSED NEW TREES, IN THE PUBLIC RIGHT OF WAY OR ON PUBLIC LANDS ARE APPROXIMATE AND ARE SHOWN FOR REFERENCE ONLY. THE LOCATIONS, SPECIFICATIONS AND PLANTING METHODS OF ALL PROPOSED NEW OR REPLACEMENT TREES IN THE PUBLIC RIGHT OF WAY OR ON PUBLIC LANDS SHALL BE APPROVED BY THE CITY FORESTER PRIOR TO INSTALLATION.

NO TREES IN THE RIGHT OF WAY OR ON PUBLIC LANDS SHALL BE TRIMMED, PRUNED, REMOVED OR ADVERSELY AFFECTED IN ANY WAY UNTIL THE DEVELOPER HAS RECEIVED WRITTEN PERMISSION FROM THE CITY ENGINEER OR CITY FORESTER. SAID WRITTEN PERMISSION SHALL INCLUDE LANGUAGE INDICATING THAT SECTION 10.101 OF THE MADISON GENERAL ORDINANCES AND ADMINISTRATIVE PROCEDURE MEMORANDUM NO. 6-2, REFERRING TO NOTIFICATION OF PROPERTY OCCUPANTS AND/OR OWNERS, HAS BEEN COMPLIED WITH.

DEVELOPER MUST SUBMIT A TRAFFIC CONTROL PLAN TO CITY TRAFFIC ENGINEERING AT LEAST 14 DAYS PRIOR TO THE START OF WORK. WORK SHALL NOT PROCEED UNTIL AN APPROVED TRAFFIC CONTROL PLAN IS IN PLACE.

CONTACT THE PROJECT ENGINEER AND DESIGNER, GRECIA IZQUIERDO, AT GIZQUIERDO@CITYOFMADISON.COM FOR CAD FILES AND ALIGNMENT DATA PRIOR TO STAKING.

CONTACT THE CITY CONSTRUCTION ENGINEER, KYLE FRANK, AT KFRANK@CITYOFMADISON.COM FOR PRECONSTRUCTION SCHEDULING, COORDINATION, AND INSPECTION.

CONVENTIONAL SIGNS	
<i>FIELD VERIFY ALL UTILITY LOCATIONS</i>	
GAS	—— G ——
STORM SEWER	—— ST ——
SANITARY SEWER	—— SAN ——
WATER	—— W ——
BURIED ELECTRIC	—— E ——
OVERHEAD ELECTRIC	—— OH ——
POWER POLE	
ADA COMPLIANT RAMP W/ DETECTABLE WARNING FIELD	
COMBUSTIBLE FLUIDS	

UNDERDRAINS SHALL BE INSTALLED PER STANDARD DETAIL DRAWING 4.05 FOR 75' ON EACH SIDE OF THE LOW POINT, OR TO THE NEAREST CURB HIGH POINT. ALL UNDERDRAIN SHALL BE WRAPPED.

ALL GUTTERS SHALL DRAIN WITH A MINIMUM GRADE OF 0.5% TOWARD STORM SEWER INLETS.

ALL DITCHES SHALL DRAIN WITH A MINIMUM GRADE OF 0.5%

THE CROSS SLOPE OF SIDEWALKS AND BARRIER FREE SIDEWALK CURB RAMPS SHALL TYPICALLY BE 1.5%. THE LONGITUDINAL GRADE OF BARRIER FREE SIDEWALK CURB RAMPS SHALL NOT EXCEED 8.33%. ALL SIDEWALK RAMPS SHALL BE CONSTRUCTED ACCORDING TO S.D.D. 3.04. AT ALL OTHER LOCATIONS THE LONGITUDINAL GRADE OF SIDEWALKS SHALL NOT EXCEED 5.0 % OR THE ADJACENT STREET GRADE WHICHEVER IS GREATER NOR BE LESS THAN 0.5% AND SHALL DRAIN TOWARD STORM SEWER INLETS. SIDE SLOPES WITHIN TEN FEET OF A PUBLIC SIDEWALK SHALL NOT EXCEED 4:1. ALL SIDEWALK AND SIDEWALK RAMP ELEVATIONS AND GRADES SHALL BE FIELD VERIFIED AND SET TO COMPLY WITH THE CITY OF MADISON STANDARD SPECIFICATIONS AND THE A.D.A. GUIDELINES.

OBTAIN A PRINT OUT OF THE ALIGNMENTS FROM THE CITY PROJECT ENGINEER PRIOR TO STAKING THIS PROJECT. THE CITY PROJECT ENGINEER IS GRECIA IZQUIERDO, EMAIL: GIZQUIERDO@CITYOFMADISON.COM

CURB STATION AND OFFSETS SHALL BE TO THE EDGE OF PAVEMENT UNLESS OTHERWISE INDICATED. CURB ELEVATIONS SHALL BE TO THE EDGE OF PAVEMENT UNLESS OTHERWISE INDICATED.

POWER POLES AND OTHER OBSTRUCTIONS SHALL BE MOVED TO PROVIDE 2 FEET MINIMUM OF CLEAR DISTANCE FROM ANY FACE OF CURB OR EDGE OF SIDEWALK UNLESS OTHERWISE INDICATED ON THE PLANS.

ANY INFORMATION SHOWN ON THIS PLAN, WHICH IS NOT PART OF THIS RIGHT-OF-WAY PROJECT, IS PRELIMINARY AND NOT FOR CONSTRUCTION.

THERE MAY BE EXISTING UTILITIES OR OTHER FEATURES WHICH ARE EITHER NOT SHOWN OR SHOWN INCORRECTLY ON THIS PLAN. IT IS THE RESPONSIBILITY OF THE DEVELOPER TO LOCATE AND IDENTIFY ALL UTILITIES AND TOPOGRAPHY WHICH MAY AFFECT THE CONSTRUCTION OF THESE IMPROVEMENTS.

ALL PERMANENT SIGNING AND POSTING WILL BE DETERMINED AND PROVIDED BY THE TRAFFIC ENGINEERING DIVISION, FOLLOWING CONSTRUCTION OF THESE IMPROVEMENTS.

THE DEVELOPER SHALL PROVIDE, INSTALL AND MAINTAIN ALL STREET END BARRICADES, SIGNING AND TRAFFIC CONTROL, AS REQUIRED BY THE CITY TRAFFIC ENGINEER.

PAVEMENT SAWCUTS SHALL BE AS DIRECTED BY THE CITY CONSTRUCTION ENGINEER. SAWCUTS SHOWN ON THE PLAN ARE APPROXIMATE.

CURB ON CUL DE SACS SHALL BE INSTALLED ACCORDING TO S.D.D 3.05.

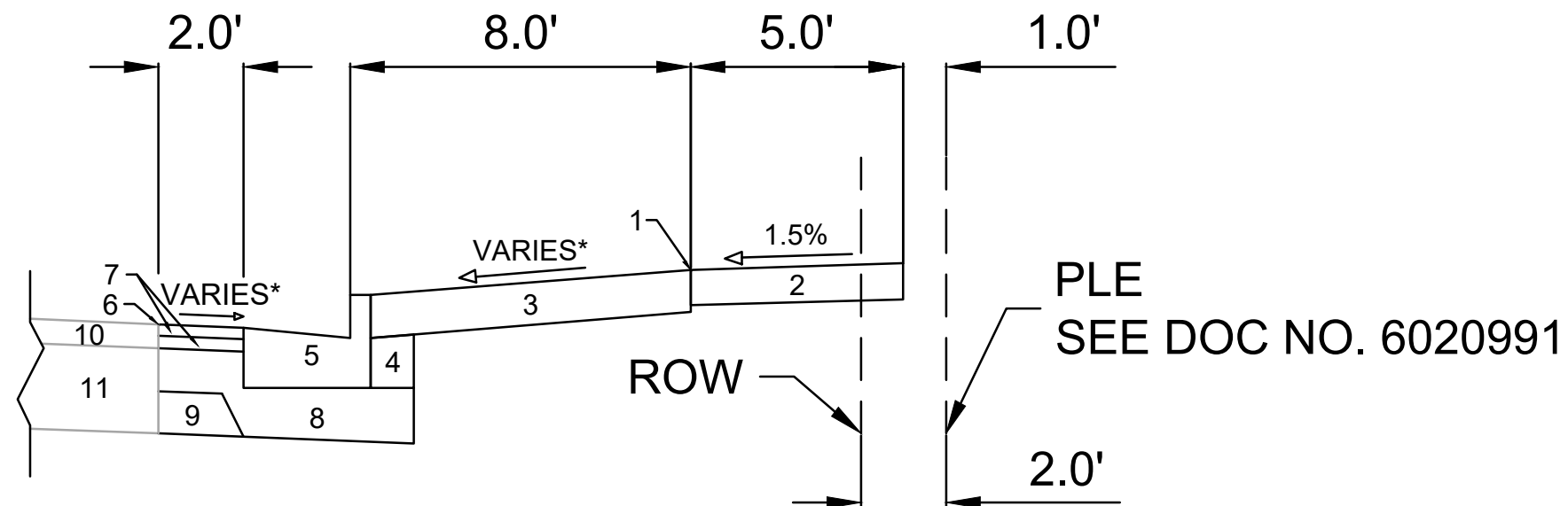
ALL WORK IN THE RIGHT OF WAY AND PUBLIC EASEMENTS SHALL BE IN ACCORDANCE WITH THE CITY OF MADISON STANDARD SPECIFICATIONS FOR PUBLIC WORKS CONSTRUCTION LATEST EDITION.

ALL PROPOSED IMPROVEMENTS IN THE RIGHT-OF-WAY ARE BASED ON SURVEY DATA PROVIDED BY THE DEVELOPER OR ITS CONSULTANT. IN THE CASE THAT THE PROPOSED IMPROVEMENTS CAN NOT BE INSTALLED PER THESE PLANS OR THE CITY OF MADISON STANDARD SPECIFICATION FOR PUBLIC WORKS CONSTRUCTION, LATEST EDITION, THE DEVELOPER SHALL BE RESPONSIBLE FOR THE COST OF EXTRA WORK DUE TO INACCURACIES OF THE SURVEY.

ALL UTILITY VERIFICATIONS AND ACCURACY OF THE DRAWINGS ARE THE RESPONSIBILITY OF THE DEVELOPER. ANY CONFLICTS THAT ARISE FROM MISSING OR ERRONEOUS INFORMATION WILL BE AT THE EXPENSE OF THE DEVELOPER. NO PRECAST STRUCTURES WILL BE APPROVED FOR STORM OR SANITARY SEWER UNTIL ALL POTENTIAL UTILITY CONFLICTS ARE RESOLVED.

IN LOCATIONS WHERE PAVEMENT RESTORATION IS NOT IDENTIFIED ADJACENT TO CURB AND REPLACEMENT, IT IS ASSUMED THAT CURB AND GUTTER WILL BE REPLACED WITHOUT DAMAGING ADJACENT PAVEMENT. IF DAMAGED, THE MILL AND OVERLAY LIMITS SHALL BE EXTENDED BY THE CITY CONSTRUCTION ENGINEER AS NECESSARY TO MEET THE STANDARD PATCHING CRITERIA.

15157	MADISON, WI	9514	15157	D-1
STANDARD NOTES		1 & 15 ELLIS POTTER COURT		M:\DESIGN\Projects\15157\CAD\Streets\15157\EN-Details.dwg
15157		15157		D-1



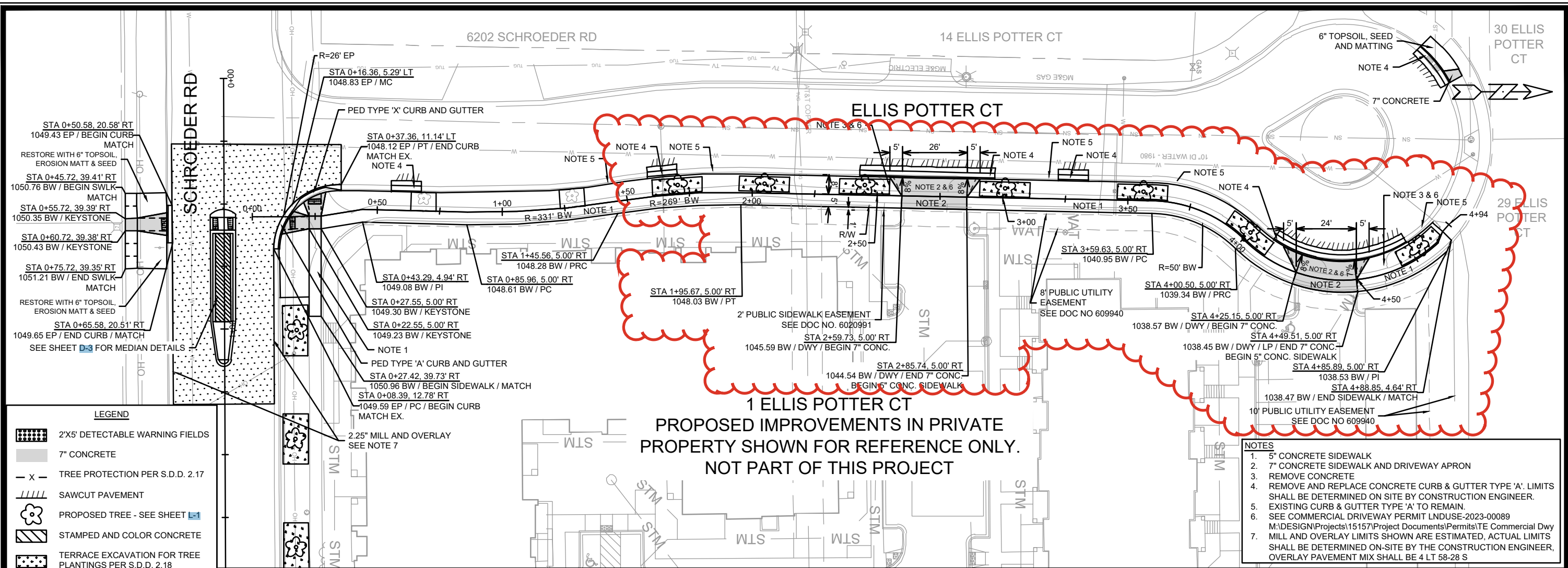
**TYPICAL SECTION
ELLIS POTTER COURT**

- 1 POINT REFERRED TO ON PROFILE
- 2 5" CONCRETE SIDEWALK
- 3 6" TOPSOIL, SEED AND MAT.
- 4 EXISTING FILL TO REMAIN, INSTALL AT CURB REPLACEMENT LOCATIONS
- 5 EXISTING CONCRETE CURB TYPE 'A', REPLACE AT LOCATIONS SHOWN IN P SHEETS OR AS DETERMINED BY THE CONSTRUCTION ENGINEER
- 6 SAWCUT LINE
- 7 1.75" H.M.A. PAVEMENT - TYPE 4 LT 58-28 S
- 8 6.00" CRUSHED AGGREGATE BASE COURSE GRADATION NO. 2
- 9 6.00" CRUSHED AGGREGATE BASE COURSE GRADATION NO. 1
- 10 EXISTING ASPHALTIC PAVEMENT TO REMAIN
- 11 EXISTING ROAD BASE TO REMAIN

SPECIAL NOTES:

* SEE X-SHEETS AND P-SHEETS OR CROSS SECTIONS AND SLOPES

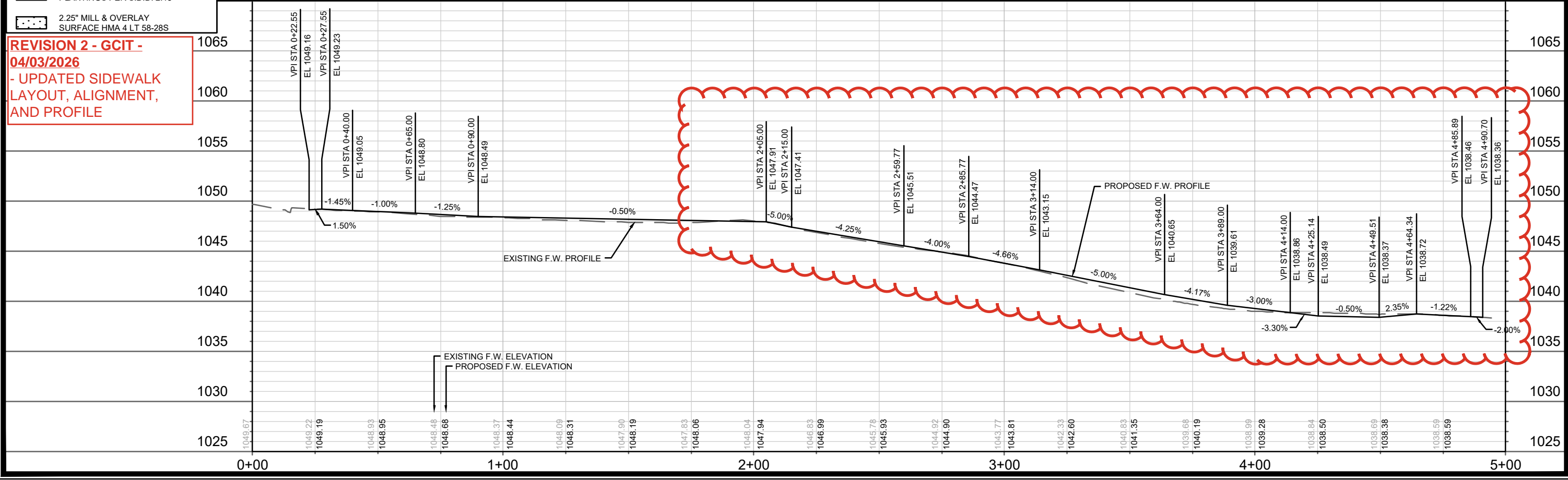
15157	MADISON, WI	9514	CONTRACT NO:	D-2
TYPICAL SECTION 1 & 15 ELLIS POTTER COURT <small>M:\DESIGN\Projects\15157\CAD\Streets\15157EN-Details.dwg</small>				
15157 D-2				



LEGEND

- 2'x5' DETECTABLE WARNING FIELDS
- 7" CONCRETE
- TREE PROTECTION PER S.D.D. 2.17
- SAWCUT PAVEMENT
- PROPOSED TREE - SEE SHEET 1
- STAMPED AND COLOR CONCRETE
- TERRACE EXCAVATION FOR TREE PLANTINGS PER S.D.D. 2.18
- 2.25" MILL & OVERLAY SURFACE HMA 4 LT 58-28S

REVISION 2 - GCIT - 04/03/2026
 - UPDATED SIDEWALK LAYOUT, ALIGNMENT, AND PROFILE

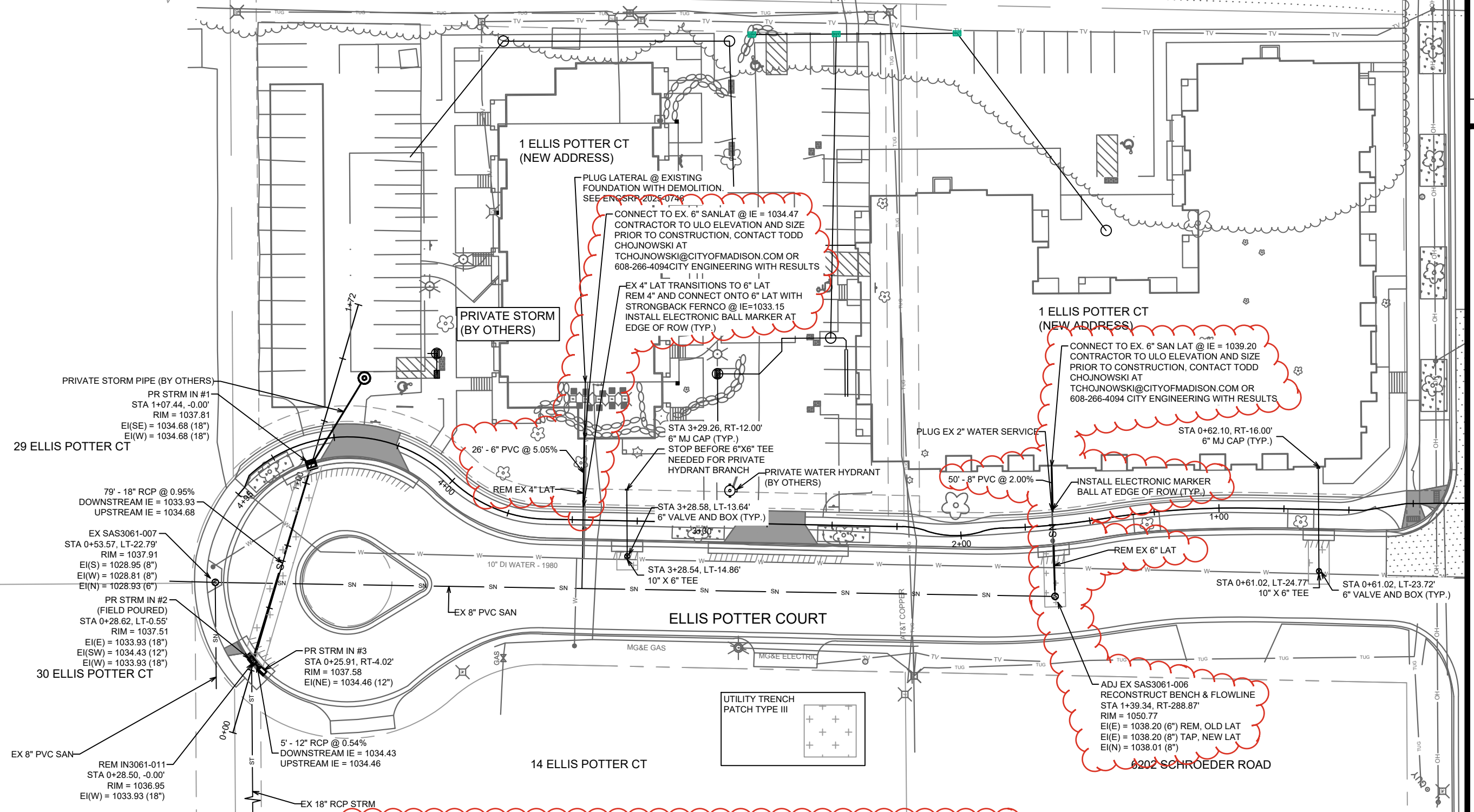
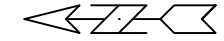


1 ELLIS POTTER CT
 PROPOSED IMPROVEMENTS IN PRIVATE PROPERTY SHOWN FOR REFERENCE ONLY. NOT PART OF THIS PROJECT

- NOTES**
1. 5" CONCRETE SIDEWALK
 2. 7" CONCRETE SIDEWALK AND DRIVEWAY APRON
 3. REMOVE CONCRETE
 4. REMOVE AND REPLACE CONCRETE CURB & GUTTER TYPE 'A'. LIMITS SHALL BE DETERMINED ON SITE BY CONSTRUCTION ENGINEER.
 5. EXISTING CURB & GUTTER TYPE 'A' TO REMAIN.
 6. SEE COMMERCIAL DRIVEWAY PERMIT LNDUSE-2023-00089
 7. M:\DESIGN\Projects\15157\Project Documents\Permits\ITE Commercial Dwy MILL AND OVERLAY LIMITS SHOWN ARE ESTIMATED, ACTUAL LIMITS SHALL BE DETERMINED ON-SITE BY THE CONSTRUCTION ENGINEER, OVERLAY PAVEMENT MIX SHALL BE 4 LT 58-28 S

15157	MADISON, WI	9514	CONTRACT NO:	P-1
PLAN & PROFILE - ELLIS POTTER COURT				
1 & 15 ELLIS POTTER COURT				
M:\DESIGN\Projects\15157\CAD\Streets\15157\EN-P\Pr.dwg				
15157				
P-1				

REVISION 1: TAC 8/5/2025
 UPDATED SAN LATS
 STANDARD UTILITY NOTES



STANDARD NOTES:

- ABBREVIATIONS: AE = APRON ENDWALL; RCP = REINFORCED CONCRETE PIPE; HERCP = HORIZONTAL ELLIPTICAL REINFORCED CONCRETE PIPE; DNA = DOES NOT APPLY; SAS = SEWER ACCESS STRUCTURE; LP = LOW POINT INLET STRUCTURE; FP = FIELD POURED STRUCTURE; TR = TOP OF CONCRETE ROOF; NCM = NO CROWN MATCH FOR PIPES; UD = UNDERDRAIN
- APPROXIMATE DISCHARGE E.I. GIVEN, ADJUST E.I. AND PIPE SLOPE IN THE FIELD.
- ALL REINFORCED CONCRETE PIPES TO BE CLASS 3 UNLESS OTHERWISE NOTED.
- ALL FIELD POURED SAS STORM STRUCTURES SHALL BE CONSTRUCTED IN ACCORDANCE WITH STANDARD DETAIL DRAWING 5.7.3. ALL PRECAST SAS STORM STRUCTURES SHALL BE CONSTRUCTED IN ACCORDANCE WITH STANDARD DETAIL DRAWING 5.7.5.
- ALL STRUCTURES CALLED OUT AS FIELD POURED SHALL BE FIELD POURED. ALL OTHER STRUCTURES (NOT INDICATED AS FIELD POURED) SHALL BE SUBMITTED TO CITY ENGINEERING FOR APPROVAL TCHOJNOWSKI@CITYOFMADISON.COM ((608) 266-4094).
- ALL REBAR FOR FIELD POURED STRUCTURES SHALL BE EPOXY COATED. ANY EXPOSED STEEL SHALL BE TOUCHED UP OR RECOATED PRIOR TO USE.
- SURVEYOR TO CONFIRM THAT ALL INLET STATION / OFFSETS LINE UP WITH PROPOSED CURB AND GUTTER.

MARK	REVISION	DATE	BY
15157	U-1	8/5/2025 5:24 PM	

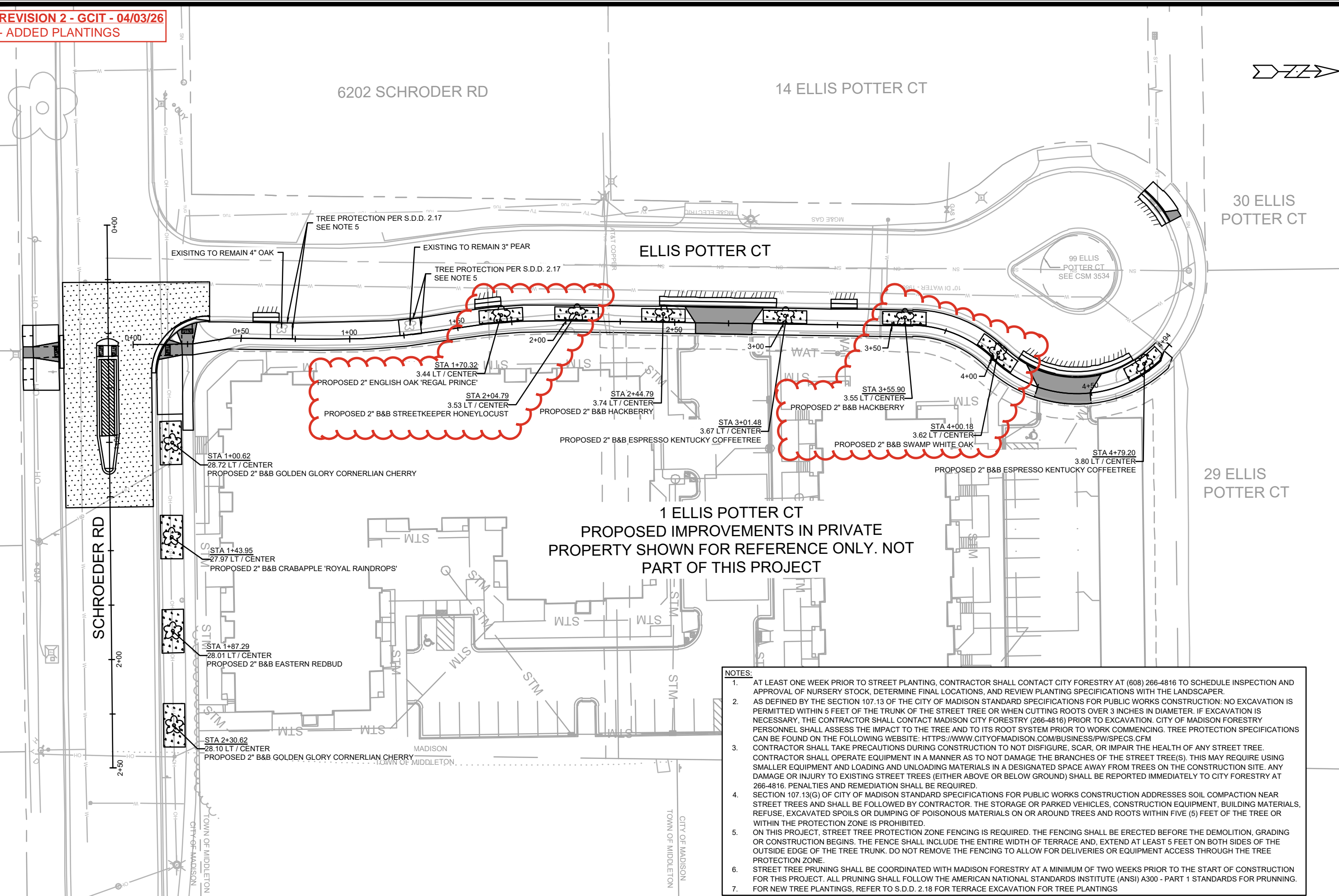
15157
 MADISON, WI
 CONTRACT NO: 9514

UTILITY PLAN
 1 & 15 ELLIS POTTER COURT
 M:\DESIGN\Projects\15157\CAD\Servers\15157\SWR\PipeNetwork.dwg

15157
 U-1



REVISION 2 - GCIT - 04/03/26
- ADDED PLANTINGS



**1 ELLIS POTTER CT
 PROPOSED IMPROVEMENTS IN PRIVATE
 PROPERTY SHOWN FOR REFERENCE ONLY. NOT
 PART OF THIS PROJECT**

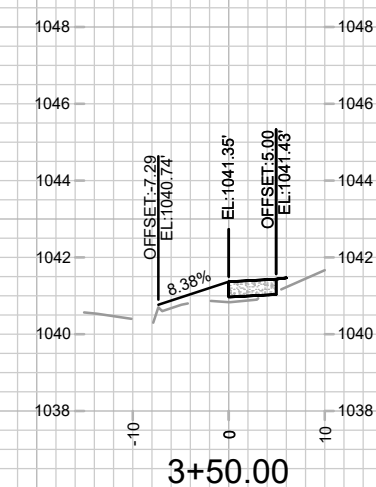
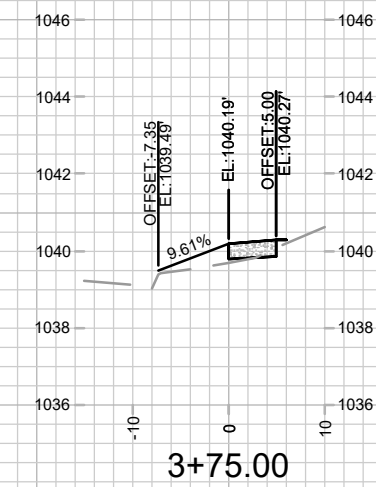
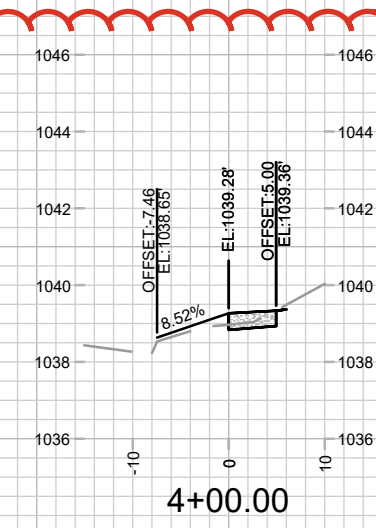
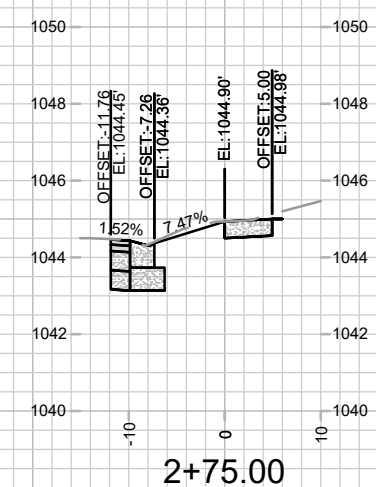
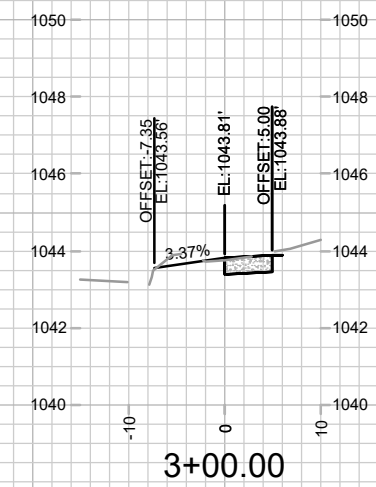
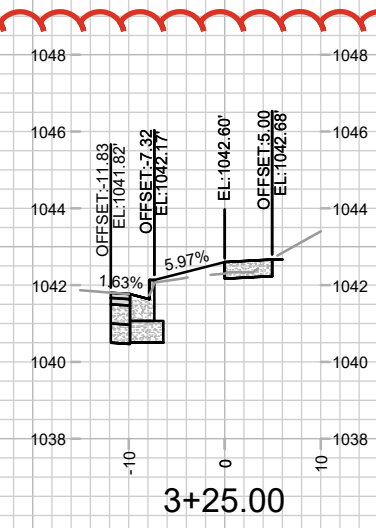
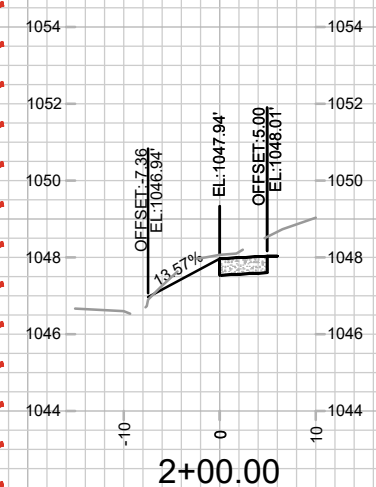
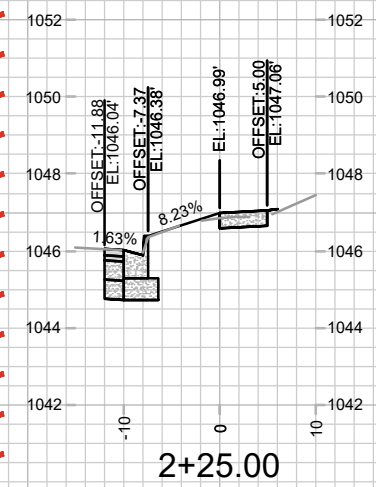
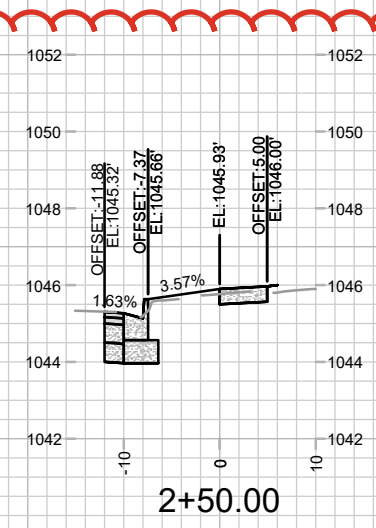
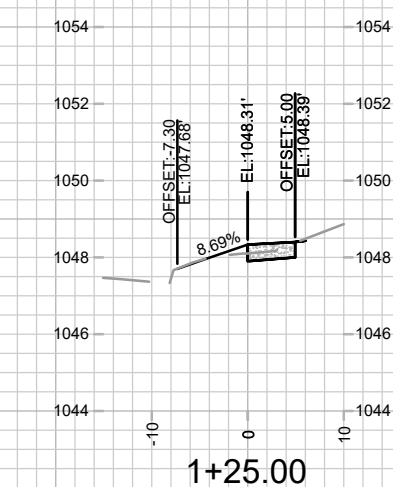
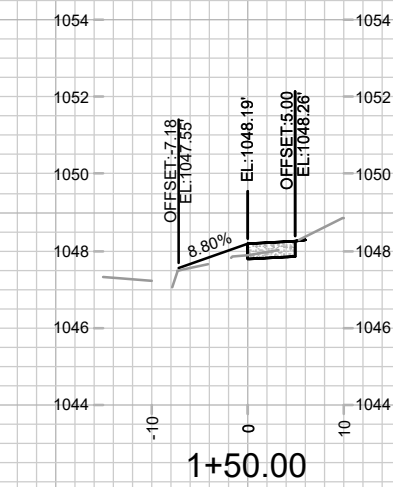
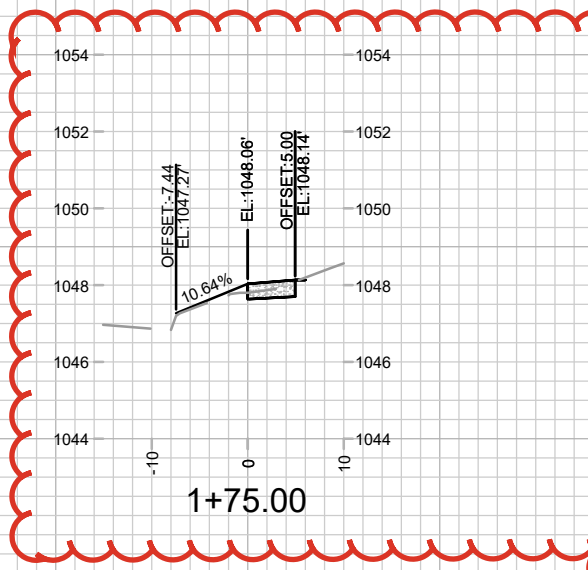
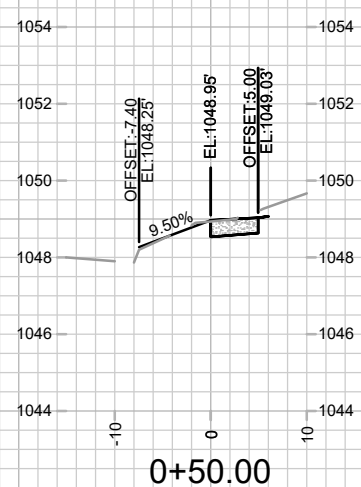
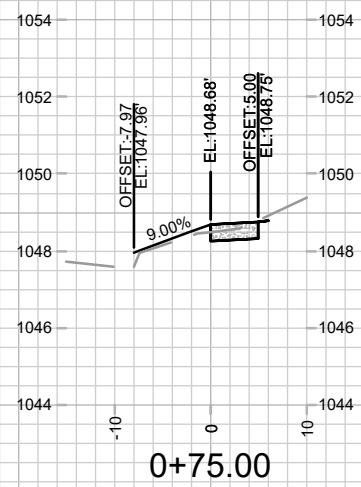
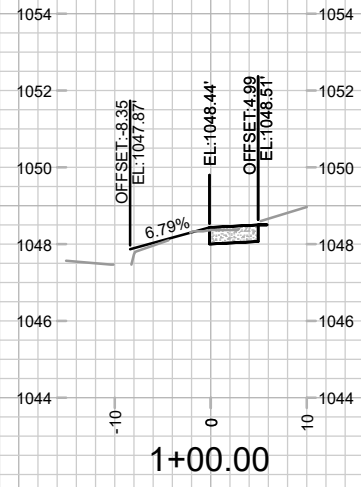
- NOTES:**
1. AT LEAST ONE WEEK PRIOR TO STREET PLANTING, CONTRACTOR SHALL CONTACT CITY FORESTRY AT (608) 266-4816 TO SCHEDULE INSPECTION AND APPROVAL OF NURSERY STOCK, DETERMINE FINAL LOCATIONS, AND REVIEW PLANTING SPECIFICATIONS WITH THE LANDSCAPER.
 2. AS DEFINED BY THE SECTION 107.13 OF THE CITY OF MADISON STANDARD SPECIFICATIONS FOR PUBLIC WORKS CONSTRUCTION: NO EXCAVATION IS PERMITTED WITHIN 5 FEET OF THE TRUNK OF THE STREET TREE OR WHEN CUTTING ROOTS OVER 3 INCHES IN DIAMETER. IF EXCAVATION IS NECESSARY, THE CONTRACTOR SHALL CONTACT MADISON CITY FORESTRY (266-4816) PRIOR TO EXCAVATION. CITY OF MADISON FORESTRY PERSONNEL SHALL ASSESS THE IMPACT TO THE TREE AND TO ITS ROOT SYSTEM PRIOR TO WORK COMMENCING. TREE PROTECTION SPECIFICATIONS CAN BE FOUND ON THE FOLLOWING WEBSITE: [HTTPS://WWW.CITYOFMADISON.COM/BUSINESS/PW/SPECS.CFM](https://www.cityofmadison.com/business/pw/specs.cfm)
 3. CONTRACTOR SHALL TAKE PRECAUTIONS DURING CONSTRUCTION TO NOT DISFIGURE, SCAR, OR IMPAIR THE HEALTH OF ANY STREET TREE. CONTRACTOR SHALL OPERATE EQUIPMENT IN A MANNER AS TO NOT DAMAGE THE BRANCHES OF THE STREET TREE(S). THIS MAY REQUIRE USING SMALLER EQUIPMENT AND LOADING AND UNLOADING MATERIALS IN A DESIGNATED SPACE AWAY FROM TREES ON THE CONSTRUCTION SITE. ANY DAMAGE OR INJURY TO EXISTING STREET TREES (EITHER ABOVE OR BELOW GROUND) SHALL BE REPORTED IMMEDIATELY TO CITY FORESTRY AT 266-4816. PENALTIES AND REMEDIATION SHALL BE REQUIRED.
 4. SECTION 107.13(G) OF CITY OF MADISON STANDARD SPECIFICATIONS FOR PUBLIC WORKS CONSTRUCTION ADDRESSES SOIL COMPACTION NEAR STREET TREES AND SHALL BE FOLLOWED BY CONTRACTOR. THE STORAGE OR PARKED VEHICLES, CONSTRUCTION EQUIPMENT, BUILDING MATERIALS, REFUSE, EXCAVATED SPOILS OR DUMPING OF POISONOUS MATERIALS ON OR AROUND TREES AND ROOTS WITHIN FIVE (5) FEET OF THE TREE OR WITHIN THE PROTECTION ZONE IS PROHIBITED.
 5. ON THIS PROJECT, STREET TREE PROTECTION ZONE FENCING IS REQUIRED. THE FENCING SHALL BE ERECTED BEFORE THE DEMOLITION, GRADING OR CONSTRUCTION BEGINS. THE FENCE SHALL INCLUDE THE ENTIRE WIDTH OF TERRACE, AND EXTEND AT LEAST 5 FEET ON BOTH SIDES OF THE OUTSIDE EDGE OF THE TREE TRUNK. DO NOT REMOVE THE FENCING TO ALLOW FOR DELIVERIES OR EQUIPMENT ACCESS THROUGH THE TREE PROTECTION ZONE.
 6. STREET TREE PRUNING SHALL BE COORDINATED WITH MADISON FORESTRY AT A MINIMUM OF TWO WEEKS PRIOR TO THE START OF CONSTRUCTION FOR THIS PROJECT. ALL PRUNING SHALL FOLLOW THE AMERICAN NATIONAL STANDARDS INSTITUTE (ANSI) A300 - PART 1 STANDARDS FOR PRUNING.
 7. FOR NEW TREE PLANTINGS, REFER TO S.D.D. 2.18 FOR TERRACE EXCAVATION FOR TREE PLANTINGS

15157	15157	15157
MADISON, WI	MADISON, WI	MADISON, WI
1 & 15 ELLIS POTTER COURT	1 & 15 ELLIS POTTER COURT	1 & 15 ELLIS POTTER COURT
CONTRACT NO: 9514	CONTRACT NO: 9514	CONTRACT NO: 9514
15157	15157	15157
L-1	L-1	L-1



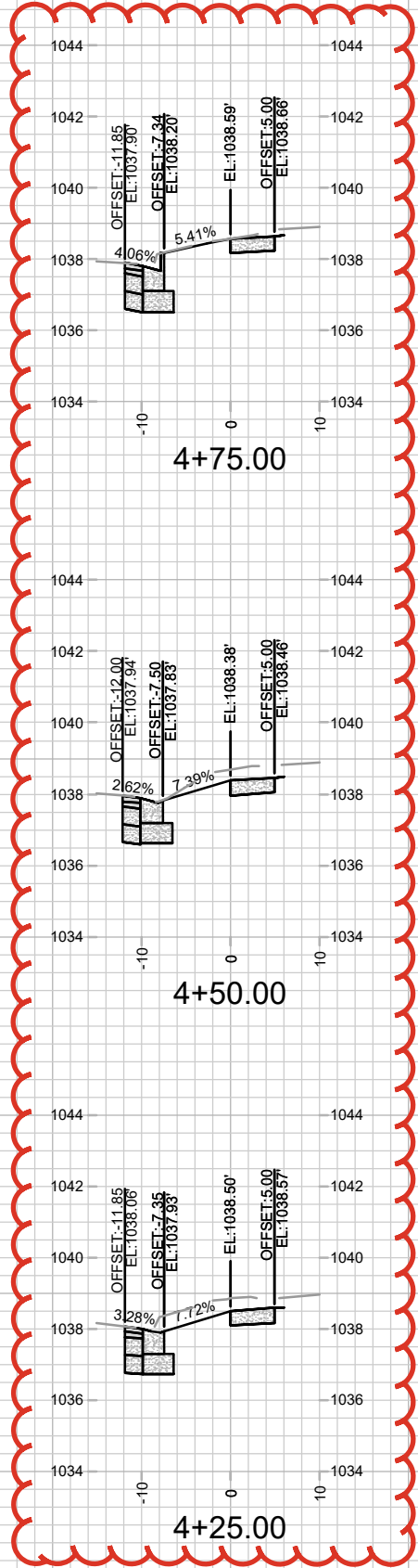
15157
 L-1

REVISION 2 - GCIT - 04/03/36
 - UPDATED CROSS SECTIONS
 FOR NEW STATIONING



15157		MADISON, WI		9514		CONTRACT NO:	
CROSS SECTIONS - ELLIS POTTER CT		1 & 15 ELLIS POTTER COURT		M:\DESIGN\Projects\15157\CAD\Streets\15157\EN-Xsections.dwg			
REV	DATE	BY	SCALE	REVISION	DATE	BY	SCALE
REV2	04/03/26	BT	1"=20'	REV2	04/03/26	BT	1"=20'
MARK				MARK			
Designer: GCIT Date: 4/9/2026 9:58 AM				15157			
				X-1			

REVISION 2 - GCIT - 04/03/36
 - UPDATED CROSS SECTIONS
 FOR NEW STATIONING

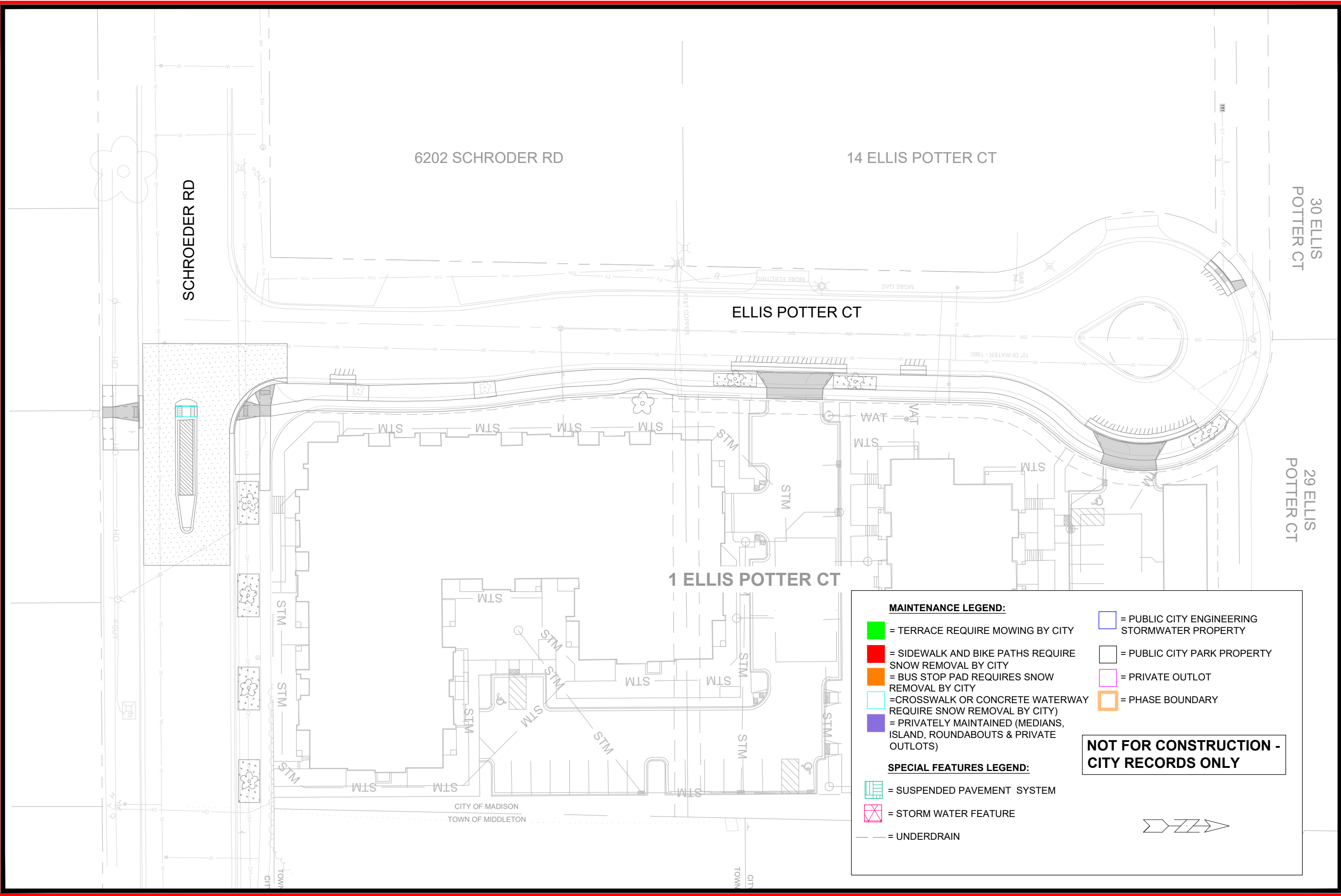


15157
 X-2

CROSS SECTIONS - ELLIS POTTER CT
 1 & 15 ELLIS POTTER COURT
 M:\DESIGN\Projects\15157\CAD\Streets\15157EN-Xsections.dwg

15157
 MADISON, WI
 CONTRACT NO: 9514

MARK	REVISION	DATE	BY
REV2	UPDATED STATIONS AND X SECTIONS	04/03/26	GCIT
Designated By	GCIT	Date: 4/9/2026 9:58 AM	Scale: 1" = 20'
15157			X-2



MAINTENANCE LEGEND:

- = TERRACE REQUIRE MOWING BY CITY
- = SIDEWALK AND BIKE PATHS REQUIRE SNOW REMOVAL BY CITY
- = BUS STOP PAD REQUIRES SNOW REMOVAL BY CITY
- = CROSSWALK OR CONCRETE WATERWAY REQUIRE SNOW REMOVAL BY CITY
- = PRIVATELY MAINTAINED (MEDIANS, ISLAND, ROUNDABOUTS & PRIVATE OUTLOTS)
- = PUBLIC CITY ENGINEERING STORMWATER PROPERTY
- = PUBLIC CITY PARK PROPERTY
- = PRIVATE OUTLOT
- = PHASE BOUNDARY

SPECIAL FEATURES LEGEND:

- = SUSPENDED PAVEMENT SYSTEM
- = STORM WATER FEATURE
- = UNDERDRAIN

NOT FOR CONSTRUCTION - CITY RECORDS ONLY

15157 MADISON, WI CONTRACT NO: 9514	15157 MN-1
MAINTENANCE PLAN (CITY USE ONLY) 1 & 15 ELLIS POTTER COURT	
M:\DESIGN\Projects\15157\CAD\Streets\15157\EN-Maintenance.dwg	
15157 MN-1	