



Madison, Wisconsin

# CITY OF MADISON

## CITY ENGINEERING DIVISION

### DEPARTMENT OF PUBLIC WORKS

# PLAN OF PROPOSED IMPROVEMENT

#### INDEX OF SHEETS

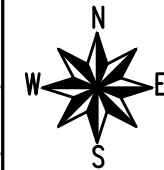
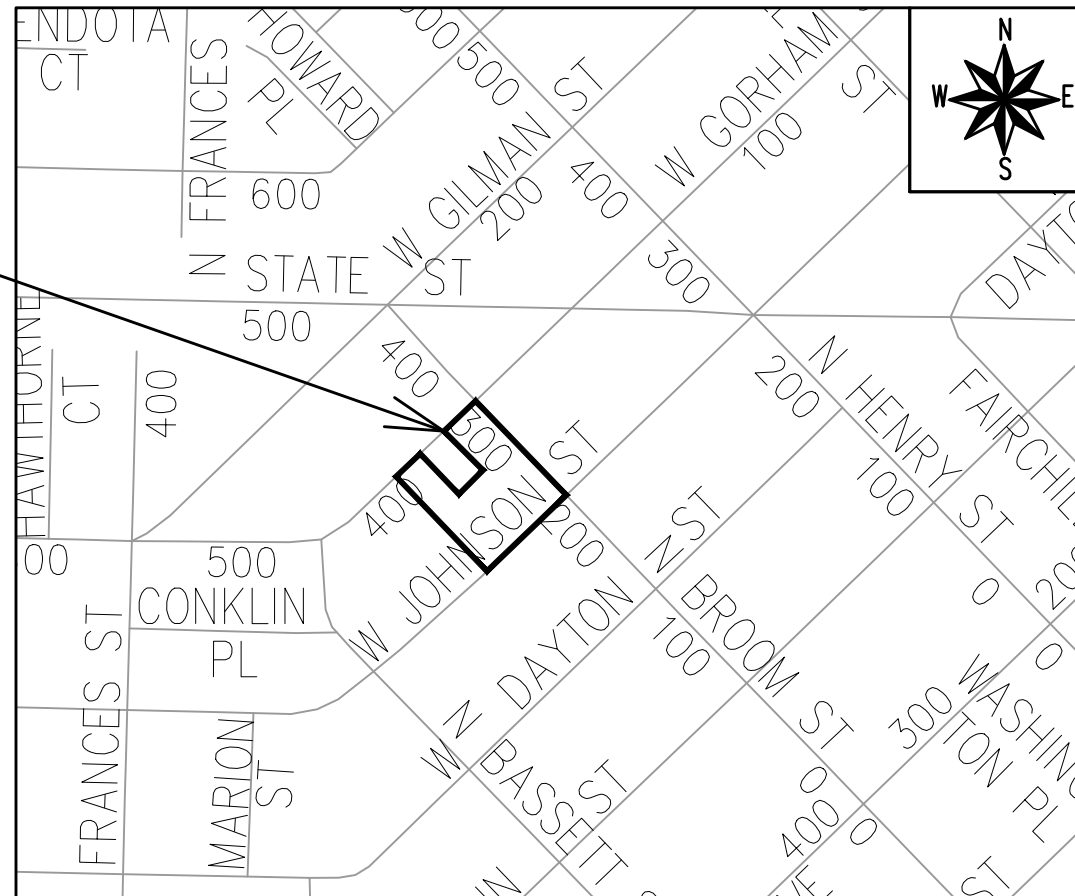
SHEET NO. D1	GENERAL NOTES
SHEET NO. D2	TYPICAL SECTIONS
SHEET NO. P1-P4	STREET PLAN & PROFILE
SHEET NO. U1-U3	SEWER PLAN & PROFILE
SHEET NO. U4	SANITARY SEWER SCHEDULE
SHEET NO. U5	STORM SEWER SCHEDULE
SHEET NO. EI	ELECTRICAL PLAN
SHEET NO. PM1	PAVEMENT MARKING PLAN
SHEET NO. L1	LANDSCAPING PLAN
SHEET NO. X1-X7	CROSS SECTIONS

NO MAINTENANCE PLAN REQUIRED.

## 405 W GORHAM STREET

CITY PROJECT NO. 15351  
CONTRACT NO. 9553

**PROJECT  
LOCATION**



**REVISION:**

- REV #1: P-4, U-3 & U-5 UPDATED
- REV #2: P-1, U-1 THRU U-4 UPDATED
- REV #3: P-2, P-3, & L-1 UPDATED

PUBLIC IMPROVEMENT PROJECT APPROVED

AUGUST 6, 2024.

BY THE COMMON COUNCIL OF MADISON, WISCONSIN

PUBLIC IMPROVEMENT DESIGN APPROVED BY:

06/10/2025

City Engineer

Date

STREET DESIGNED BY:



06/10/2025

ELECTRICAL DESIGNED BY:



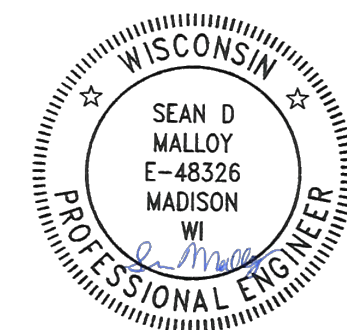
06/10/2025

SANITARY SEWER DESIGNED BY:



06/10/2025

PAVEMENT MARKING DESIGNED BY:



06/10/2025

STORM SEWER DESIGNED BY:



06/10/2025

PLOT SCALE: 1:1\_XREF

REV. DATE: 4/30/2025 11:30 AM

ORIGINATOR: CITY\_OF\_MADISON

ALL PROPOSED STREET TREE REMOVALS WITHIN THE RIGHT OF WAY SHALL BE REVIEWED BY CITY FORESTRY BEFORE THE PLAN COMMISSION MEETING. STREET TREE REMOVALS REQUIRE APPROVAL AND A TREE REMOVAL PERMIT ISSUED BY CITY FORESTRY. ANY STREET TREE REMOVALS REQUESTED AFTER THE DEVELOPMENT PLANS ARE APPROVED BY THE PLAN COMMISSION OR THE BOARD OF PUBLIC WORKS AND CITY FORESTRY WILL REQUIRE A MINIMUM OF A 72-HOUR REVIEW PERIOD WHICH SHALL INCLUDE THE NOTIFICATION OF THE ALDERPERSON WITHIN WHO'S DISTRICT IS AFFECTED BY THE STREET TREE REMOVAL(S) PRIOR TO A TREE REMOVAL PERMIT BEING ISSUED.

AS DEFINED BY SECTION 107.13 OF THE CITY OF MADISON STANDARD SPECIFICATIONS FOR PUBLIC WORKS CONSTRUCTION, LATEST EDITION: NO EXCAVATION IS PERMITTED WITHIN 5 FEET OF THE TRUNK OF THE STREET TREE OR WHEN CUTTING ROOTS OVER 3 INCHES IN DIAMETER. IF EXCAVATION IS NECESSARY, THE CONTRACTOR SHALL CONTACT MADISON CITY FORESTRY (266-4816) PRIOR TO EXCAVATION. CITY OF MADISON FORESTRY PERSONNEL SHALL ASSESS THE IMPACT TO THE TREE AND TO ITS ROOT SYSTEM PRIOR TO WORK COMMENCING. TREE PROTECTION SPECIFICATIONS CAN BE FOUND ON THE FOLLOWING WEBSITE: [www.cityofmadison.com/engineering/developers-contractors/standard-specifications](http://www.cityofmadison.com/engineering/developers-contractors/standard-specifications)

THE LOCATION AND INFORMATION FOR PROPOSED NEW TREES, IN THE PUBLIC RIGHT OF WAY OR ON PUBLIC LANDS ARE APPROXIMATE AND ARE SHOWN FOR REFERENCE ONLY. THE LOCATIONS, SPECIFICATIONS AND PLANTING METHODS OF ALL PROPOSED NEW OR REPLACEMENT TREES IN THE PUBLIC RIGHT OF WAY OR ON PUBLIC LANDS SHALL BE APPROVED BY THE CITY FORESTER PRIOR TO INSTALLATION.

NO TREES IN THE RIGHT OF WAY OR ON PUBLIC LANDS SHALL BE TRIMMED, PRUNED, REMOVED OR ADVERSELY AFFECTED IN ANY WAY UNTIL THE DEVELOPER HAS RECEIVED WRITTEN PERMISSION FROM THE CITY ENGINEER OR CITY FORESTER. SAID WRITTEN PERMISSION SHALL INCLUDE LANGUAGE INDICATING THAT SECTION 10.101 OF THE MADISON GENERAL ORDINANCES AND ADMINISTRATIVE PROCEDURE MEMORANDUM NO. 6-2, REFERRING TO NOTIFICATION OF PROPERTY OCCUPANTS AND/OR OWNERS, HAS BEEN COMPLIED WITH.

DEVELOPER MUST SUBMIT A TRAFFIC CONTROL PLAN TO CITY TRAFFIC ENGINEERING AT LEAST 14 DAYS PRIOR TO THE START OF WORK. WORK SHALL NOT PROCEED UNTIL AN APPROVED TRAFFIC CONTROL PLAN IS IN PLACE.

CONTACT THE PROJECT ENGINEER AND DESIGNER, IKE OKAFOR, AT IOKAFOR@CITYOFMADISON.COM FOR CAD FILES AND ALIGNMENT DATA PRIOR TO STAKING.

CONTACT THE CITY CONSTRUCTION ENGINEER, KYLE FRANK, AT KFRANK@CITYOFMADISON.COM FOR PRECONSTRUCTION SCHEDULING, COORDINATION, AND INSPECTION.

UNDERDRAINS SHALL BE INSTALLED PER STANDARD DETAIL DRAWING 4.05 FOR 75' ON EACH SIDE OF THE LOW POINT, OR TO THE NEAREST CURB HIGH POINT. ALL UNDERDRAIN SHALL BE WRAPPED.

ALL GUTTERS SHALL DRAIN WITH A MINIMUM GRADE OF 0.5% TOWARD STORM SEWER INLETS.

ALL DITCHES SHALL DRAIN WITH A MINIMUM GRADE OF 0.5%

THE CROSS SLOPE OF SIDEWALKS AND BARRIER FREE SIDEWALK CURB RAMPS SHALL TYPICALLY BE 1.5%. THE LONGITUDINAL GRADE OF BARRIER FREE SIDEWALK CURB RAMPS SHALL NOT EXCEED 8.33%. ALL SIDEWALK RAMPS SHALL BE CONSTRUCTED ACCORDING TO S.D.D. 3.04. AT ALL OTHER LOCATIONS THE LONGITUDINAL GRADE OF SIDEWALKS SHALL NOT EXCEED 5.0 % OR THE ADJACENT STREET GRADE WHICHEVER IS GREATER NOR BE LESS THAN 0.5% AND SHALL DRAIN TOWARD STORM SEWER INLETS. SIDE SLOPES WITHIN TEN FEET OF A PUBLIC SIDEWALK SHALL NOT EXCEED 4:1. ALL SIDEWALK AND SIDEWALK RAMP ELEVATIONS AND GRADES SHALL BE FIELD VERIFIED AND SET TO COMPLY WITH THE CITY OF MADISON STANDARD SPECIFICATIONS AND THE A.D.A. GUIDELINES.

CURB STATION AND OFFSETS SHALL BE TO THE EDGE OF PAVEMENT UNLESS OTHERWISE INDICATED. CURB ELEVATIONS SHALL BE TO THE EDGE OF PAVEMENT UNLESS OTHERWISE INDICATED.

POWER POLES AND OTHER OBSTRUCTIONS SHALL BE MOVED TO PROVIDE 2 FEET MINIMUM OF CLEAR DISTANCE FROM ANY FACE OF CURB OR EDGE OF SIDEWALK UNLESS OTHERWISE INDICATED ON THE PLANS.

ANY INFORMATION SHOWN ON THIS PLAN, WHICH IS NOT PART OF THIS RIGHT-OF-WAY PROJECT, IS PRELIMINARY AND NOT FOR CONSTRUCTION.

THERE MAY BE EXISTING UTILITIES OR OTHER FEATURES WHICH ARE EITHER NOT SHOWN OR SHOWN INCORRECTLY ON THIS PLAN. IT IS THE RESPONSIBILITY OF THE DEVELOPER TO LOCATE AND IDENTIFY ALL UTILITIES AND TOPOGRAPHY WHICH MAY AFFECT THE CONSTRUCTION OF THESE IMPROVEMENTS.

ALL PERMANENT SIGNING AND POSTING WILL BE DETERMINED AND PROVIDED BY THE TRAFFIC ENGINEERING DIVISION, FOLLOWING CONSTRUCTION OF THESE IMPROVEMENTS.

THE DEVELOPER SHALL PROVIDE, INSTALL AND MAINTAIN ALL STREET END BARRICADES, SIGNING AND TRAFFIC CONTROL, AS REQUIRED BY THE CITY TRAFFIC ENGINEER.

PAVEMENT SAWCUTS SHALL BE AS DIRECTED BY THE CITY CONSTRUCTION ENGINEER. SAWCUTS SHOWN ON THE PLAN ARE APPROXIMATE.

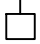


CURB ON CUL DE SACS SHALL BE INSTALLED ACCORDING TO S.D.D 3.05.

ALL WORK IN THE RIGHT OF WAY AND PUBLIC EASEMENTS SHALL BE IN ACCORDANCE WITH THE CITY OF MADISON STANDARD SPECIFICATIONS FOR PUBLIC WORKS CONSTRUCTION, LATEST EDITION.

ALL PROPOSED IMPROVEMENTS IN THE RIGHT-OF-WAY ARE BASED ON SURVEY DATA PROVIDED BY THE DEVELOPER OR ITS CONSULTANT. IN THE CASE THAT THE PROPOSED IMPROVEMENTS CAN NOT BE INSTALLED PER THESE PLANS OR THE CITY OF MADISON STANDARD SPECIFICATION FOR PUBLIC WORKS CONSTRUCTION, LATEST EDITION, THE DEVELOPER SHALL BE RESPONSIBLE FOR THE COST OF EXTRA WORK DUE TO INACCURACIES OF THE SURVEY.

ALL UTILITY VERIFICATIONS AND ACCURACY OF THE DRAWINGS ARE THE RESPONSIBILITY OF THE DEVELOPER. ANY CONFLICTS THAT ARISE FROM MISSING OR ERRONEOUS INFORMATION WILL BE AT THE EXPENSE OF THE DEVELOPER. NO PRECAST STRUCTURES WILL BE APPROVED FOR STORM OR SANITARY SEWER UNTIL ALL POTENTIAL UTILITY CONFLICTS ARE RESOLVED.

IN LOCATIONS WHERE PAVEMENT RESTORATION IS NOT IDENTIFIED ADJACENT TO CURB AND GUTTER REPLACEMENT, IT IS ASSUMED THAT CURB AND GUTTER WILL BE REPLACED WITHOUT DAMAGING ADJACENT PAVEMENT. IF DAMAGED, THE MILL AND OVERLAY LIMITS SHALL BE EXTENDED BY THE CITY CONSTRUCTION ENGINEER AS NECESSARY TO MEET THE STANDARD PATCHING CRITERIA.

<i>CONVENTIONAL SIGNS</i>	
<i>FIELD VERIFY ALL UTILITY LOCATIONS</i>	
<i>GAS</i>	—— G ——
<i>STORM SEWER</i>	—— ST ——
<i>SANITARY SEWER</i>	—— SAN ——
<i>WATER</i>	—— W ——
<i>BURIED ELECTRIC</i>	—— E ——
<i>OVERHEAD ELECTRIC</i>	—— OH ——
<i>POWER POLE</i>	
<i>ADA COMPLIANT RAMP W/ DETECTABLE WARNING FIELD</i>	
<i>COMBUSTIBLE FLUIDS</i>	

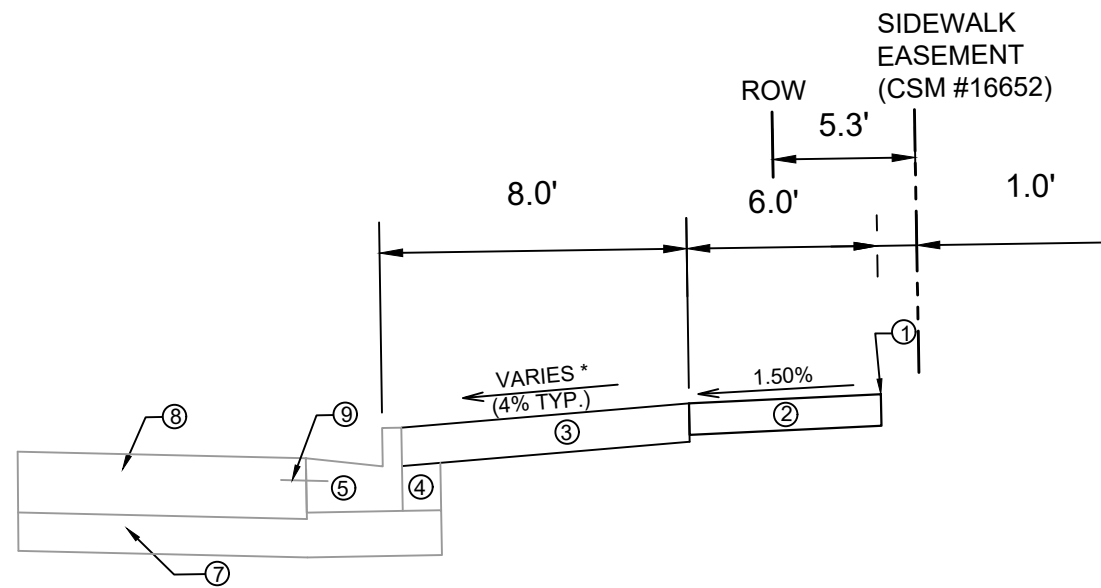
MARK	DESIGNED BY: IO	DATE	BY
15351	15351	07/20/25 9:04 AM	D-1

15351  
MADISON, WI  
9553  
CONTRACT NO:

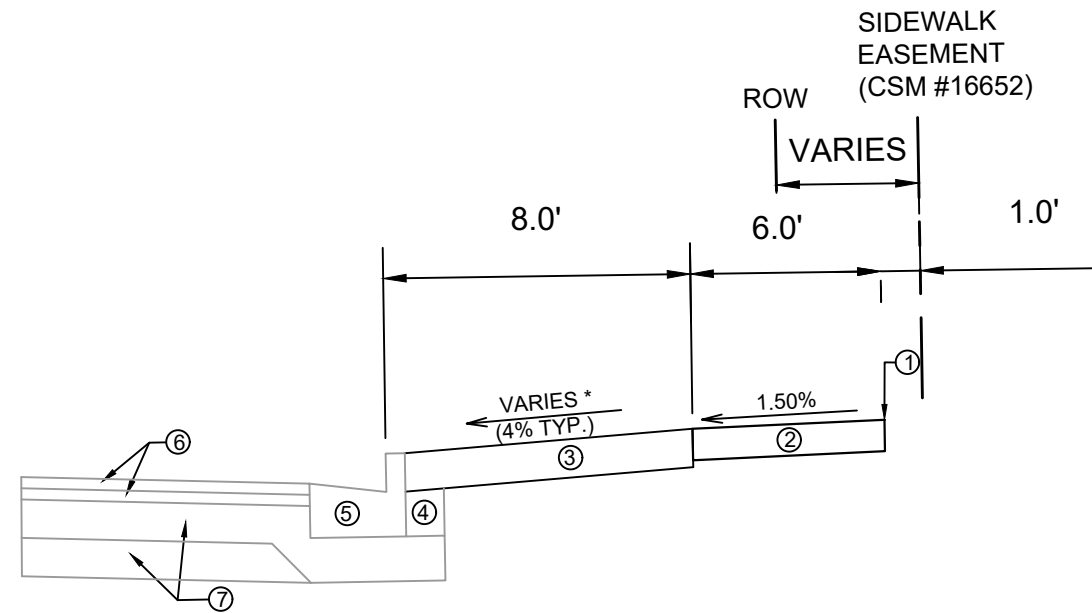
GENERAL NOTES  
405 W GORHAM STREET  
M:\DESIGN\Projects\15351\CAD\Streets\15351\EN-Details.dwg



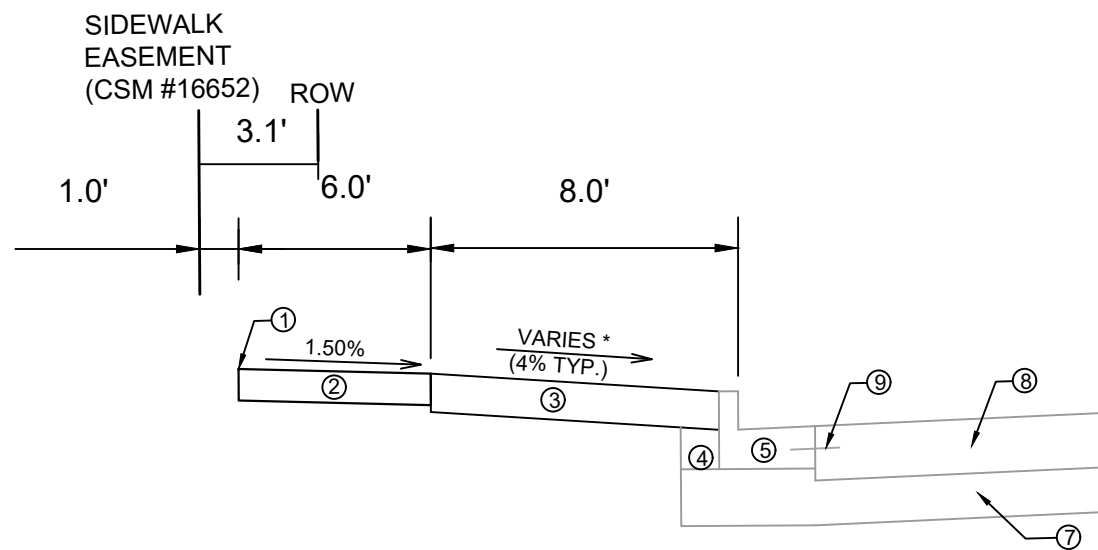
15351  
D-1



**TYPICAL SECTION**  
W GORHAM STREET  
(STA 10+55 TO STA 11+18)



**TYPICAL SECTION**  
N BROOM STREET  
(STA 20+45 TO STA 23+48)



**TYPICAL SECTION**  
W JOHNSON STREET  
(STA 30+24 TO STA 33+74)

**SPECIAL NOTES:**

\* SEE X SHEETS FOR SURFACE SLOPES.

- ① POINT REFERRED TO ON PROFILE.
- ② 5" CONCRETE SIDEWALK.
- ③ 6" TOPSOIL, SEED AND MATTING.
- ④ FILL.
- ⑤ EXISTING CONCRETE CURB AND GUTTER TYPE 'A' TO REMAIN, REPLACE IN LOCATIONS IDENTIFIED IN P SHEETS.
- ⑥ EXISTING H.M.A. PAVEMENT TO REMAIN.
- ⑦ EXISTING CRUSHED AGGREGATE BASE COURSE TO REMAIN.
- ⑧ EXISTING 10" CONCRETE PAVEMENT TO REMAIN.
- ⑨ TIE BAR.

MARK	REVISION	DATE	BY
15351	07/27/2025 9:04 AM		
Designed By: ID	Scale:		D-2

15351  
MADISON, WI  
CONTRACT NO: 9553


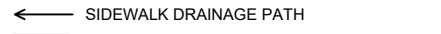


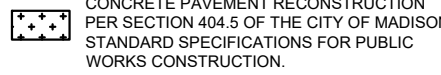


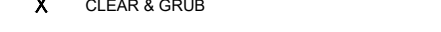
TYPICAL SECTIONS  
405 W GORHAM STREET  
M:\DESIGN\Projects\15351\CAD\Streets\15351\EN-Details.dwg



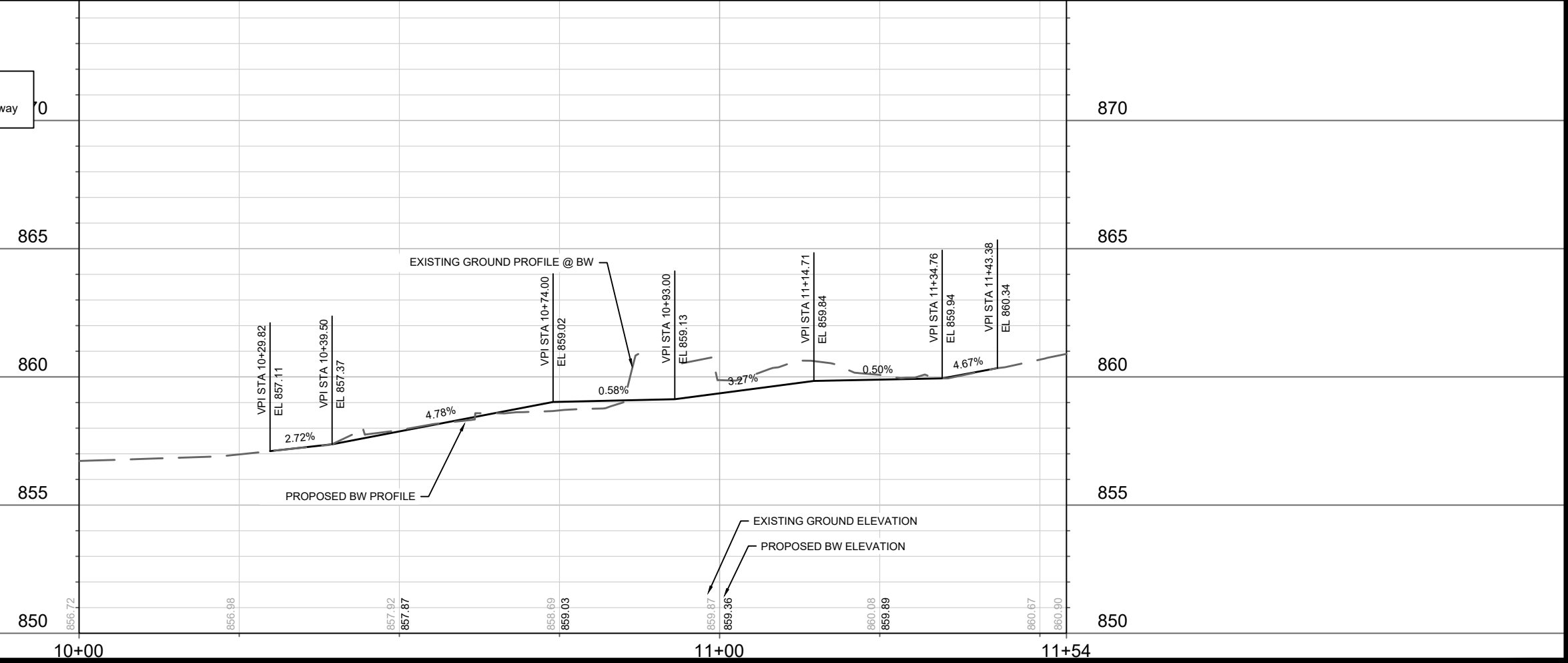
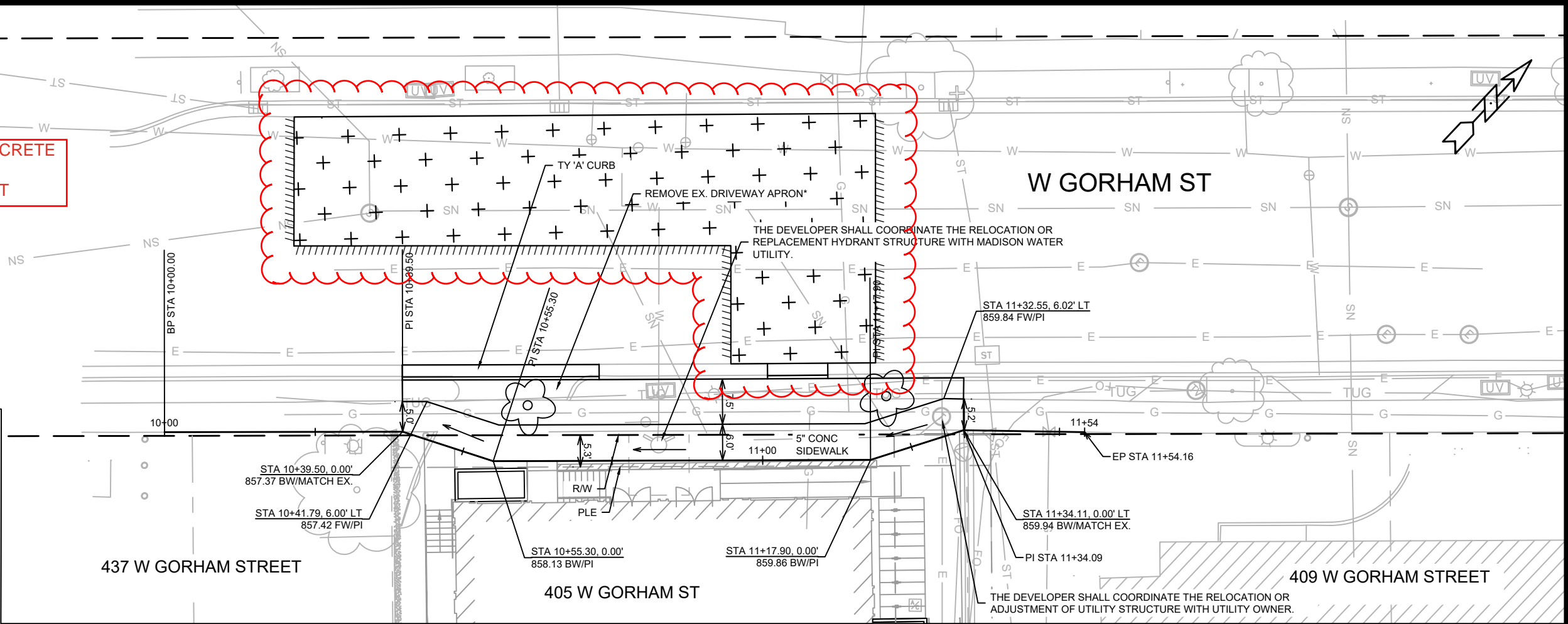
15351  
D-2


**REV #2: REVISED TO ADD CONCRETE PAVEMENT SECTION DUE TO SANITARY MAIN REPLACEMENT**

**LEGEND**

-  SAWCUT LINE
-  SIDEWALK DRAINAGE PATH
-  2" MILL AND OVERLAY
-  7" CONCRETE SIDEWALK & APRON
-  CONCRETE PAVEMENT RECONSTRUCTION PER SECTION 404.5 OF THE CITY OF MADISON STANDARD SPECIFICATIONS FOR PUBLIC WORKS CONSTRUCTION.
-  NEW STREET TREE, SEE SHEET L1
-  TREE ZONE PROTECTION PER S.D.D. 2.17
-  CLEAR & GRUB



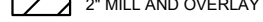

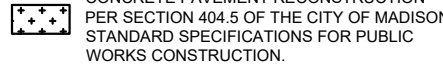


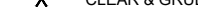
**SPECIAL NOTES**  
 SEE COMMERCIAL DRIVEWAY PERMIT # LNDUSE-2023-00071  
 M:\DESIGN\Projects\15351\Project Documents\Permits\TE Commercial Driveway



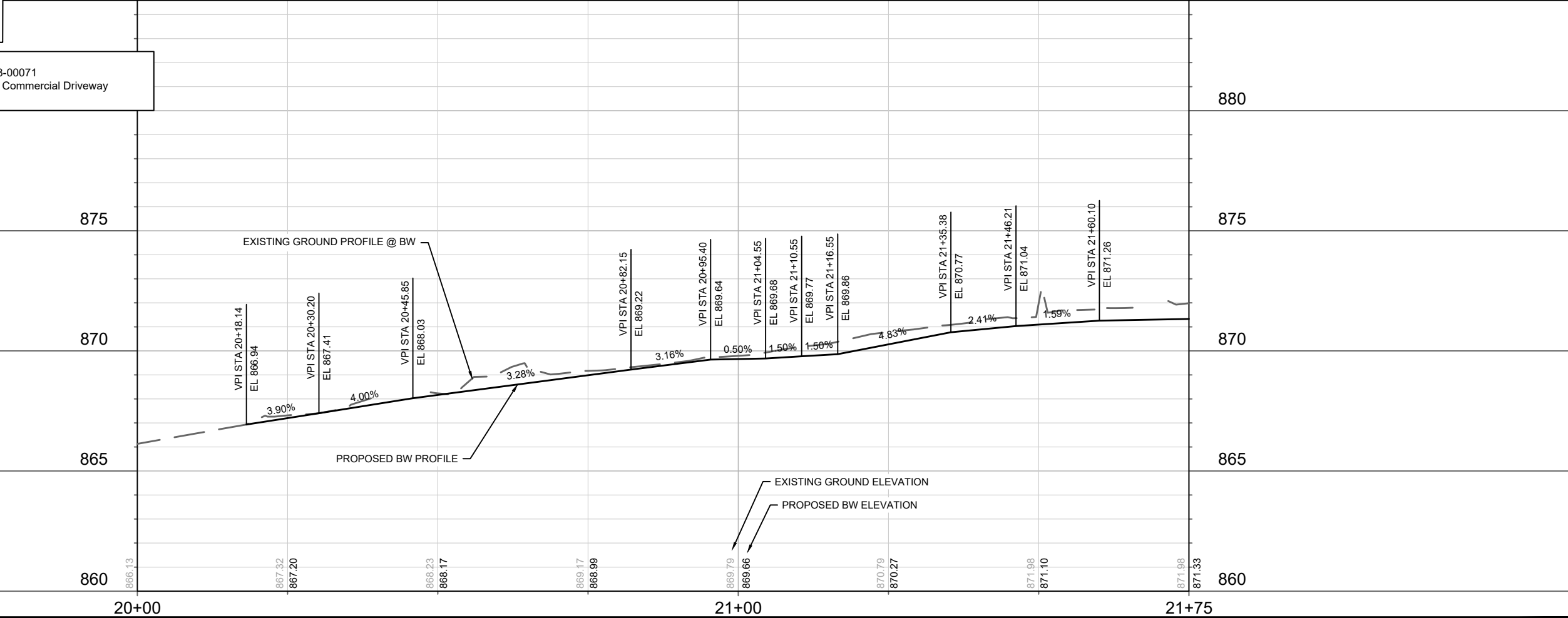
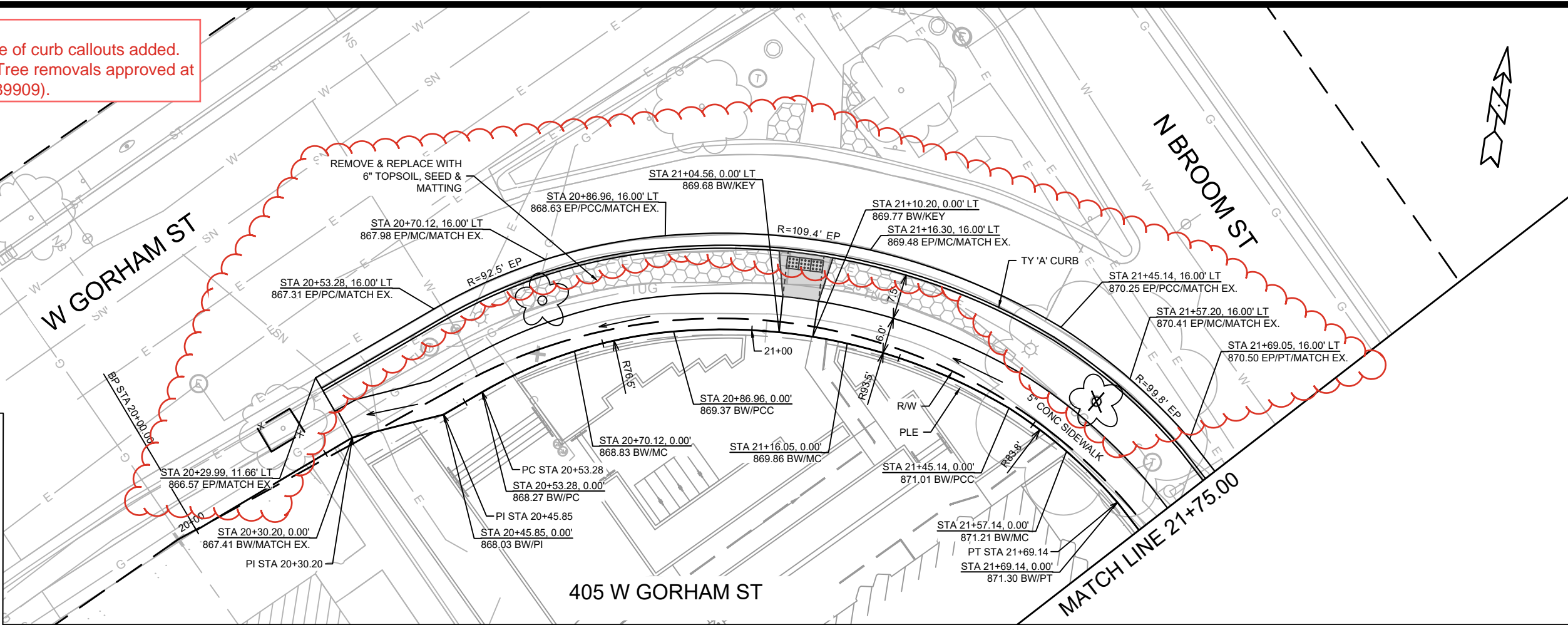
15351	MADISON, WI	9553	CONTRACT NO:
STREET PLAN & PROFILE - W GORHAM STREET			
405 W GORHAM STREET			
M:\DESIGN\Projects\15351\CAD\Streets\15351\EN-PnP.dwg			
			
15351		P-1	


REV#3 - IO - 6/23/26  
 - Curb replacement extended and edge of curb callouts added.  
 - Street trees removed and replaced (Tree removals approved at the 9/17/25 BPW meeting, resolution 89909).

**LEGEND**

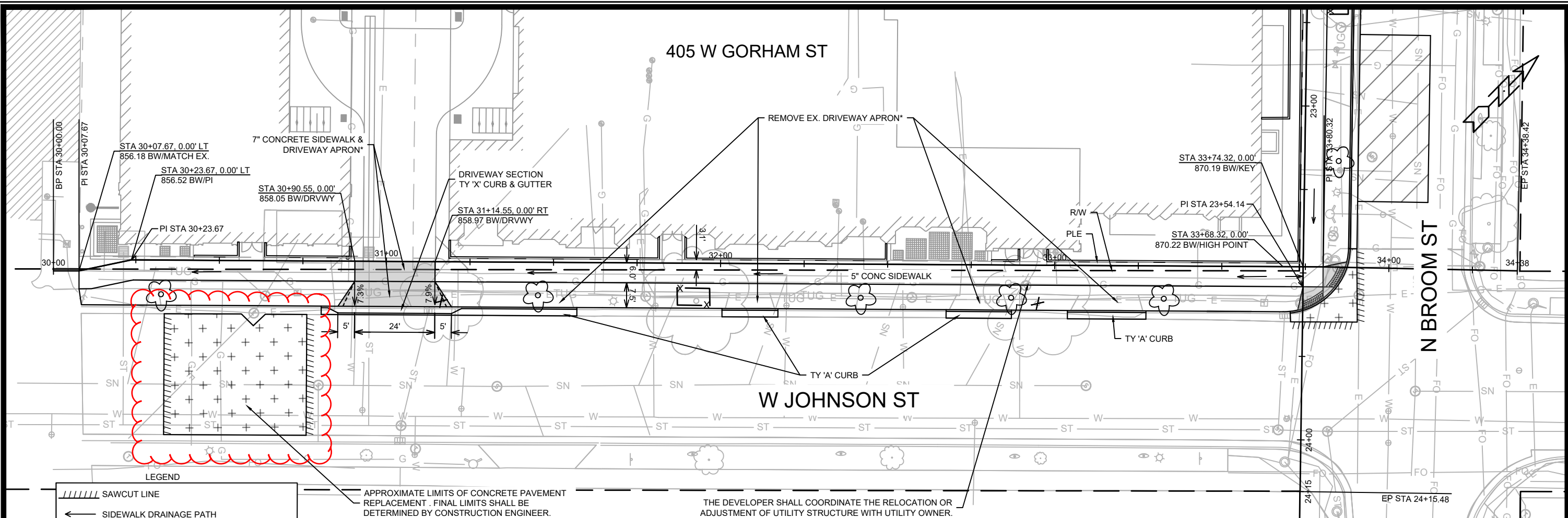
-  SAWCUT LINE
-  SIDEWALK DRAINAGE PATH
-  2" MILL AND OVERLAY
-  7" CONCRETE SIDEWALK & APRON
-  CONCRETE PAVEMENT RECONSTRUCTION PER SECTION 404.5 OF THE CITY OF MADISON STANDARD SPECIFICATIONS FOR PUBLIC WORKS CONSTRUCTION.
-  NEW STREET TREE, SEE SHEET L1
-  TREE ZONE PROTECTION PER S.D.D. 2.17
-  CLEAR & GRUB

**SPECIAL NOTES**  
 SEE COMMERCIAL DRIVEWAY PERMIT # LNDUSE-2023-00071  
 M:\DESIGN\Projects\15351\Project Documents\Permits\TE Commercial Driveway



15351	MADISON, WI	9553	CONTRACT NO:
STREET PLAN & PROFILE - N BROOM STREET			
405 W GORHAM STREET			
M:\DESIGN\Projects\15351\CAD\Streets\15351\EN\PrP.dwg			
			
15351		P-2	





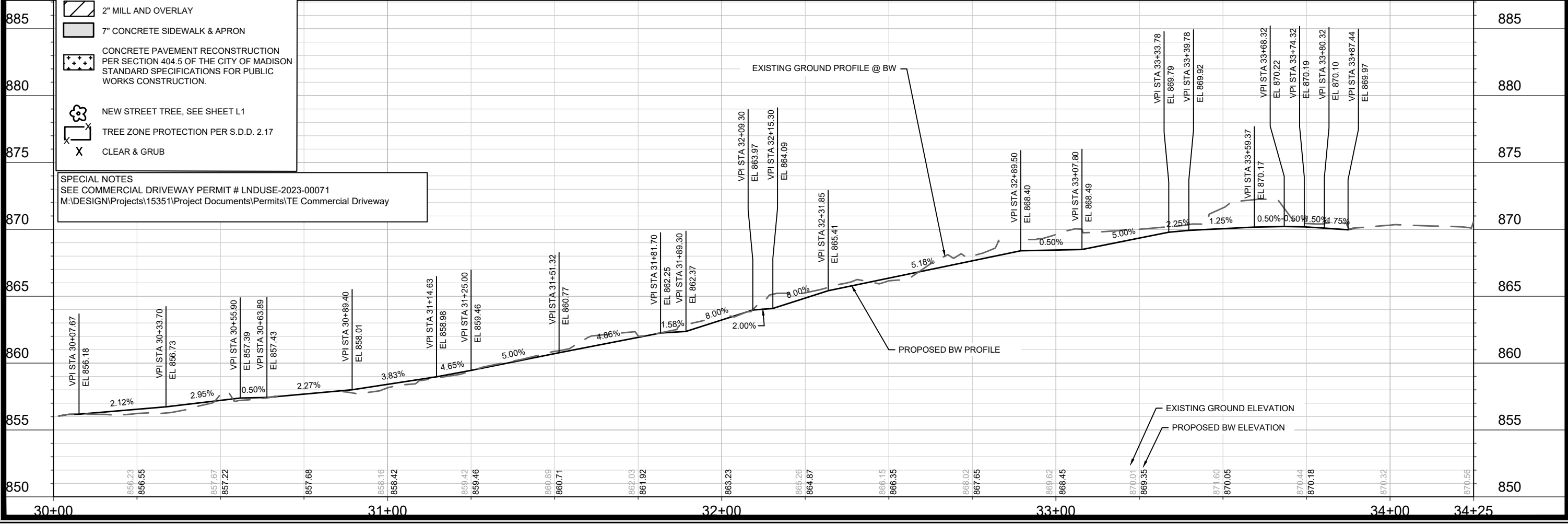
**LEGEND**

- SAWCUT LINE
- SIDEWALK DRAINAGE PATH
- 2" MILL AND OVERLAY
- 7" CONCRETE SIDEWALK & APRON
- CONCRETE PAVEMENT RECONSTRUCTION PER SECTION 404.5 OF THE CITY OF MADISON STANDARD SPECIFICATIONS FOR PUBLIC WORKS CONSTRUCTION.
- NEW STREET TREE, SEE SHEET L1
- TREE ZONE PROTECTION PER S.D.D. 2.17
- CLEAR & GRUB

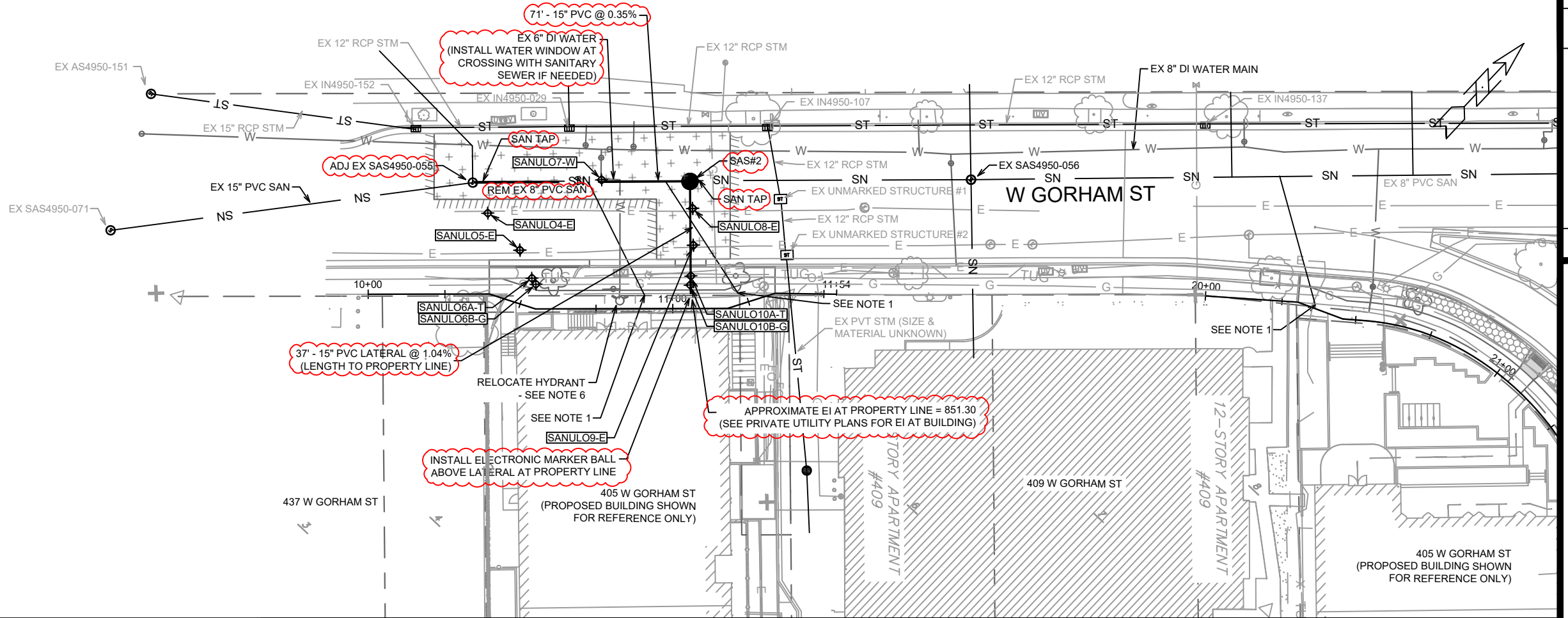
**SPECIAL NOTES**  
 SEE COMMERCIAL DRIVEWAY PERMIT # LNDUSE-2023-00071  
 M:\DESIGN\Projects\15351\Project Documents\Permits\TE Commercial Driveway

APPROXIMATE LIMITS OF CONCRETE PAVEMENT REPLACEMENT. FINAL LIMITS SHALL BE DETERMINED BY CONSTRUCTION ENGINEER.

THE DEVELOPER SHALL COORDINATE THE RELOCATION OR ADJUSTMENT OF UTILITY STRUCTURE WITH UTILITY OWNER.



15351	MADISON, WI	9553	CONTRACT NO:
STREET PLAN & PROFILE - W JOHNSON STREET			
405 W GORHAM STREET			
M:\DESIGN\Projects\15351\CAD\Streets\15351\EN-PnP.dwg			
15351		P-4	

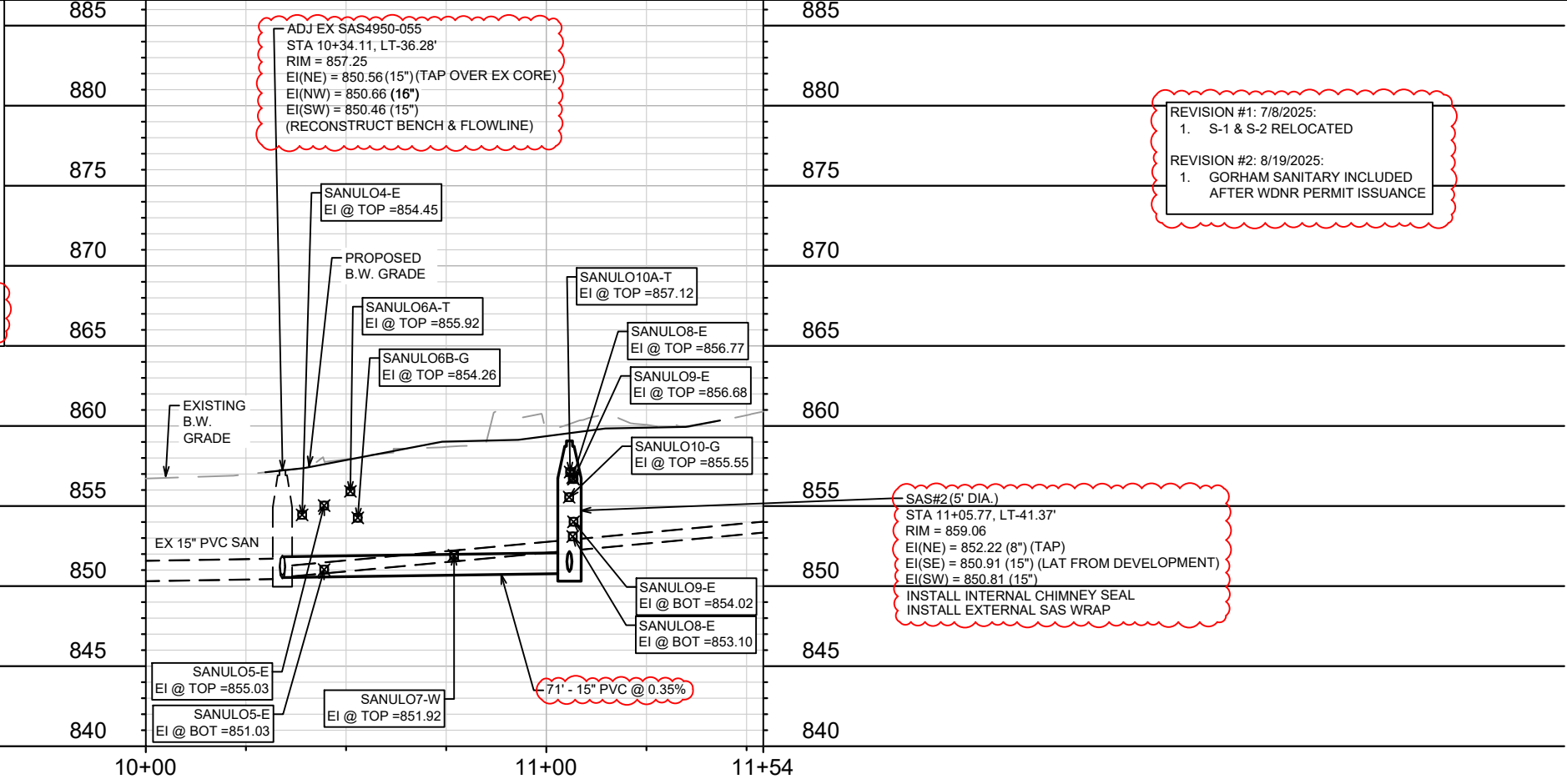


LEGEND

	2" MILL AND OVERLAY APPROX. LIMITS
	10" CONCRETE REPLACEMENT APPROX. LIMITS

- NOTES
- EXISTING SANITARY AND STORM LATERALS TO BE PLUGGED - SEE PERMIT #'S ENSRP-2024-04858 & ENSRP-2024-04860.
  - SANITARY LATERAL PLUG NOT REQUIRED. EXISTING LATERAL WILL EFFECTIVELY BE PLUGGED AS A RESULT OF SEWER MAIN ABANDONMENT.
  - 2" MILL & OVERLAY LIMITS SHOWN ARE APPROXIMATE. ACTUAL LIMITS WILL BE DETERMINED BY THE CITY CONSTRUCTION ENGINEER. OVERLAY PAVEMENT MIX SHALL BE 4 MT 58-28 S.
  - 10" CONCRETE REPLACEMENT LIMITS SHOWN ARE APPROXIMATE. ACTUAL LIMITS WILL BE DETERMINED BY THE CITY CONSTRUCTION ENGINEER. SAWCUT ALONG EXISTING CONCRETE JOINTS.
  - ULOS SHOWN ON THESE PLANS WERE PERFORMED PRIOR TO PLAN ISSUANCE. ADDITIONAL ULOS MAY BE REQUIRED AT THE DISCRETION OF CITY ENGINEERING.
  - WATER MAIN/SERVICE LOCATION AND RELOCATIONS ARE APPROXIMATE. COORDINATE HYDRANT RELOCATION AND WATER MAIN RELOCATIONS WITH MADISON WATER UTILITY, JEFF BELSHAW (JBELSHAW@MADISONWATER.ORG, 608-261-9835).
  - PRE-CAST SANITARY AND STORM STRUCTURE SHOP DRAWINGS SHALL BE SUBMITTED TO ERIC CEVALU AT ECEVALU@CITYOFMADISON.COM FOR APPROVAL PRIOR TO DELIVERY TO SITE.

**DO NOT INSTALL NEW PUBLIC SANITARY SEWER MAIN AND/OR STRUCTURES ON WEST GORHAM STREET UNTIL A WDNR SANITARY SEWER EXTENSION PERMIT IS OBTAINED BY CITY ENGINEERING AND PROVIDED TO THE CONTRACTOR. FUTURE SANITARY SEWER ON GORHAM STREET IS SHOWN FOR REFERENCE ONLY (SEE U-1).**



REVISION #1: 7/8/2025:  
1. S-1 & S-2 RELOCATED

REVISION #2: 8/19/2025:  
1. GORHAM SANITARY INCLUDED AFTER WDNR PERMIT ISSUANCE

SAS#2 (5' DIA.)  
STA 11+05.77, LT-41.37'  
RIM = 859.06  
EI(NE) = 852.22 (8") (TAP)  
EI(SE) = 850.91 (15") (LAT FROM DEVELOPMENT)  
EI(SW) = 850.81 (15")  
INSTALL INTERNAL CHIMNEY SEAL  
INSTALL EXTERNAL SAS WRAP

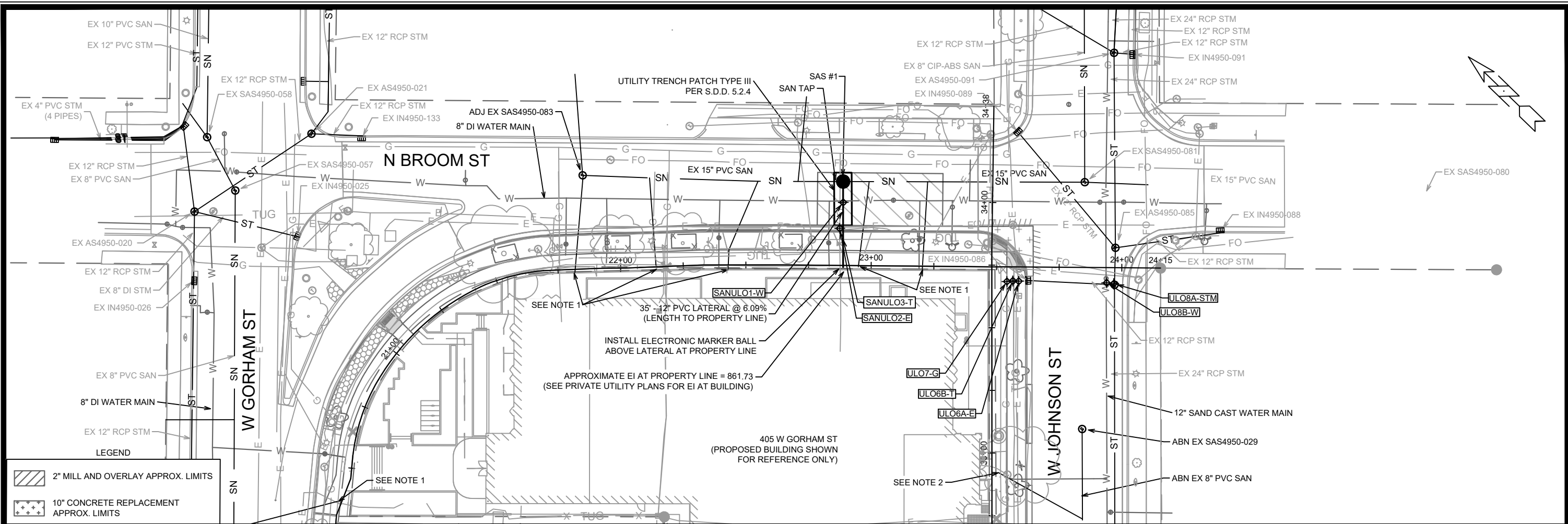
15351	GORHAM SANITARY	8/19/25	EAC	BY
	REVISION	DATE		
2				
MARK	DESIGNED BY	DATE	SCALE	
	15351	8/19/2025 7:36 AM	1" = 40'	U-1

15351  
MADISON, WI  
CONTRACT NO.: 9553

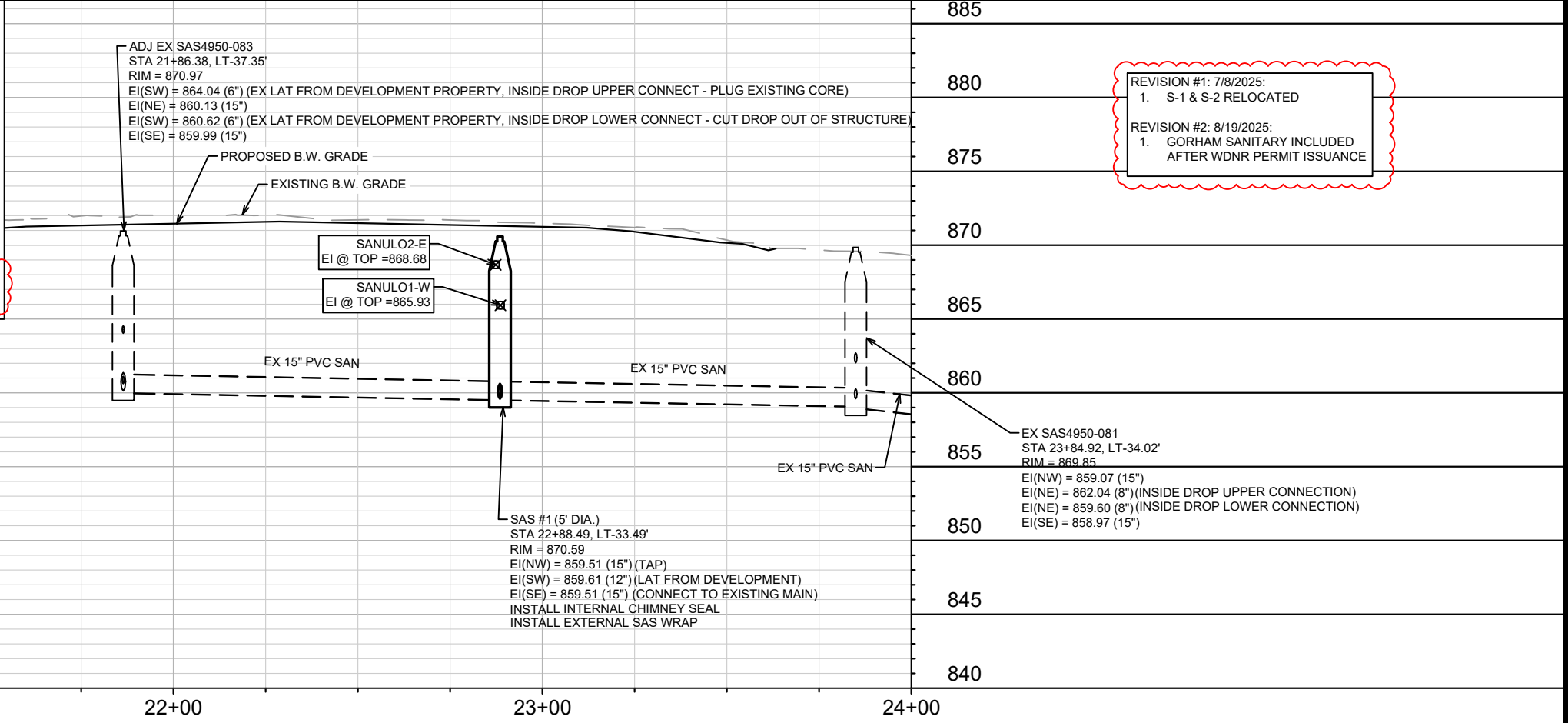
SEWER PLAN & PROFILE - W GORHAM STREET  
405 W GORHAM STREET

M:\DESIGN\Projects\15351\CAD\Sewers\15351SWR-PipeNetwork.dwg

15351  
U-1



- NOTES**
- EXISTING SANITARY AND STORM LATERALS TO BE PLUGGED - SEE PERMIT #'S ENGRP-2024-04858 & ENGRP-2024-04860.
  - SANITARY LATERAL PLUG NOT REQUIRED. EXISTING LATERAL WILL EFFECTIVELY BE PLUGGED AS A RESULT OF SEWER MAIN ABANDONMENT.
  - 2" MILL & OVERLAY LIMITS SHOWN ARE APPROXIMATE. ACTUAL LIMITS WILL BE DETERMINED BY THE CITY CONSTRUCTION ENGINEER. OVERLAY PAVEMENT MIX SHALL BE 4 MT 58-28 S.
  - 10" CONCRETE REPLACEMENT LIMITS SHOWN ARE APPROXIMATE. ACTUAL LIMITS WILL BE DETERMINED BY THE CITY CONSTRUCTION ENGINEER. SAWCUT ALONG EXISTING CONCRETE JOINTS.
  - ULOS SHOWN ON THESE PLANS WERE PERFORMED PRIOR TO PLAN ISSUANCE. ADDITIONAL ULOS MAY BE REQUIRED AT THE DISCRETION OF CITY ENGINEERING.
  - WATER MAIN/SERVICE LOCATION AND RELOCATIONS ARE APPROXIMATE. COORDINATE HYDRANT RELOCATION AND WATER MAIN RELOCATIONS WITH MADISON WATER UTILITY, JEFF BELSHAW (JBELSHAW@MADISONWATER.ORG, 608-261-9835).
  - PRE-CAST SANITARY AND STORM STRUCTURE SHOP DRAWINGS SHALL BE SUBMITTED TO ERIC CEVALU AT ECEVALU@CITYOFMADISON.COM FOR APPROVAL PRIOR TO DELIVERY TO SITE.
  - DO NOT INSTALL NEW PUBLIC SANITARY SEWER MAIN AND/OR STRUCTURES ON WEST GORHAM STREET UNTIL A WDNR SANITARY SEWER EXTENSION PERMIT IS OBTAINED BY CITY ENGINEERING AND PROVIDED TO THE CONTRACTOR. FUTURE SANITARY SEWER ON GORHAM STREET IS SHOWN FOR REFERENCE ONLY (SEE U-1).**



**REVISION #1: 7/8/2025:**  
1. S-1 & S-2 RELOCATED

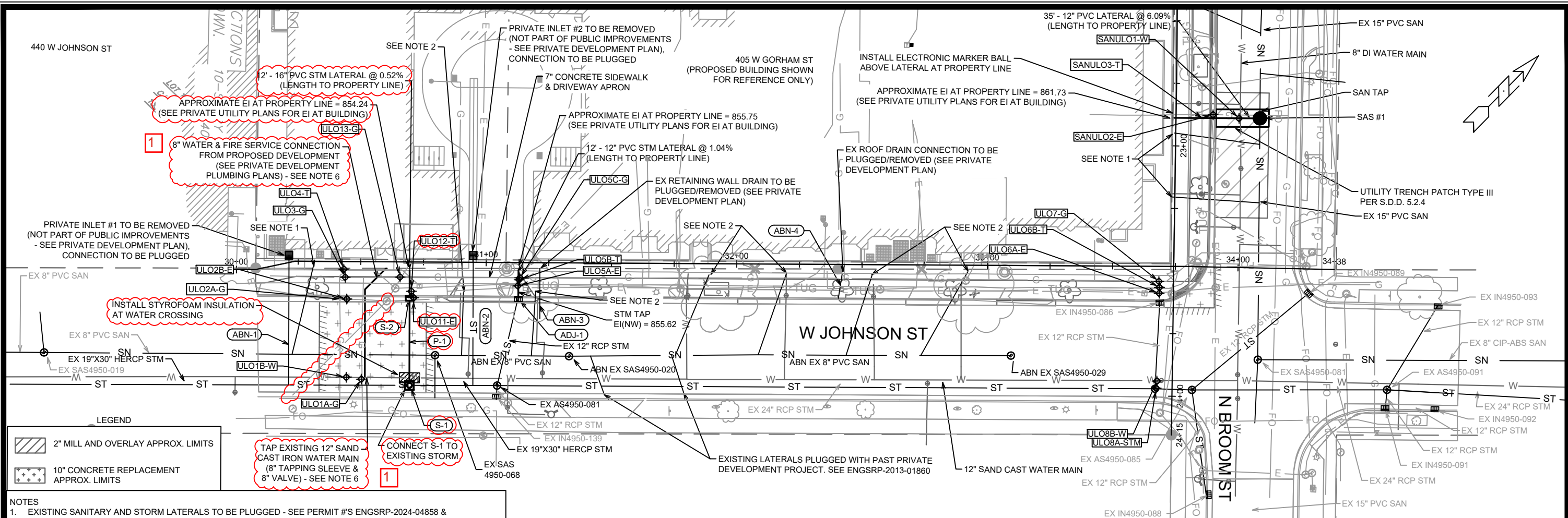
**REVISION #2: 8/19/2025:**  
1. GORHAM SANITARY INCLUDED AFTER WDNR PERMIT ISSUANCE

15351	GORHAM SANITARY	8/19/25	EAC	BY
2	REVISION	Date: 8/19/2025 7:36 AM	Scale: 1" = 40'	U-2
15351	MARK	15351		

15351  
MADISON, WI  
9553  
CONTRACT NO:

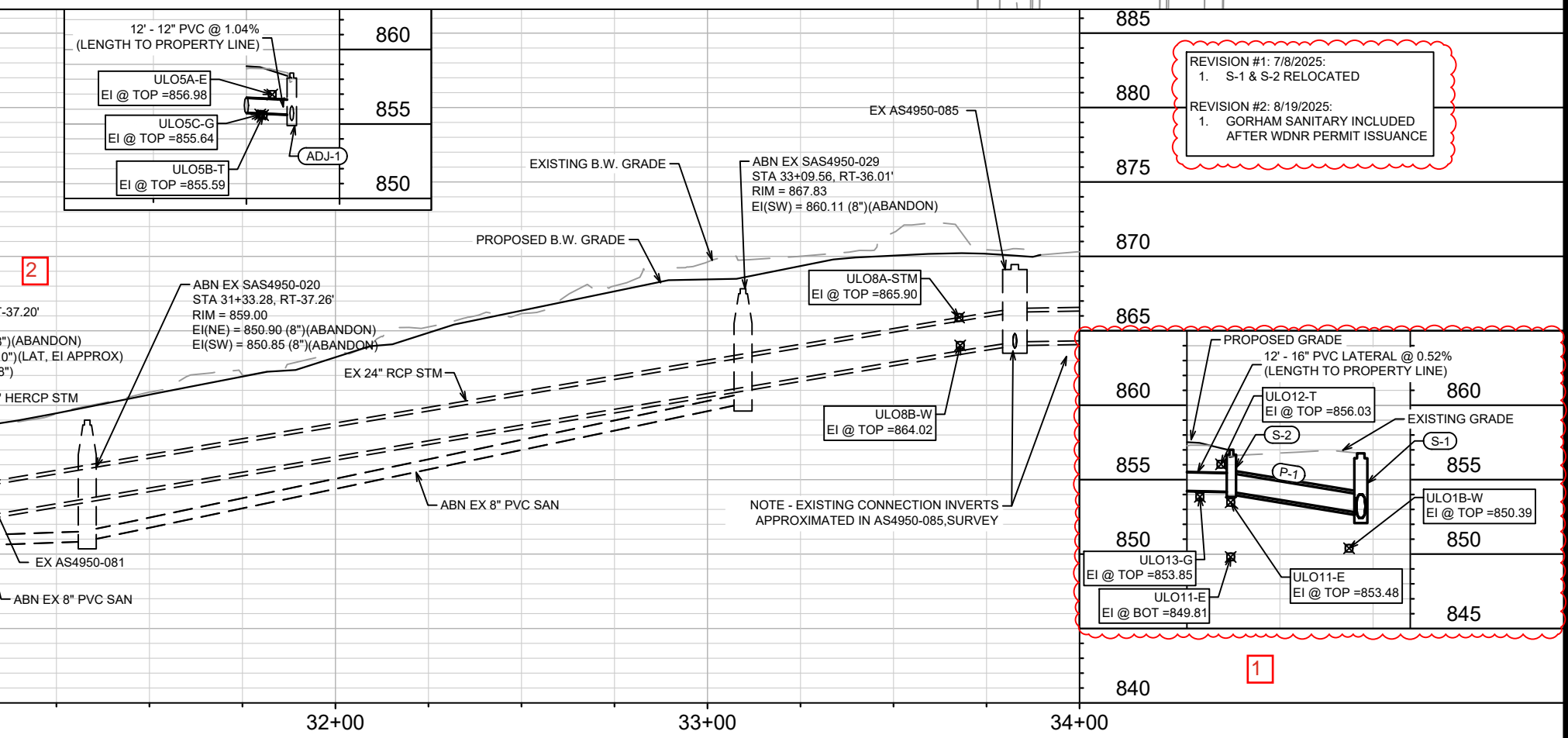
SEWER PLAN & PROFILE - N BROOM STREET  
405 W GORHAM STREET  
M:\DESIGN\Projects\15351\CAD\sewers\15351SWR-PipeNetwork.dwg

15351  
U-2



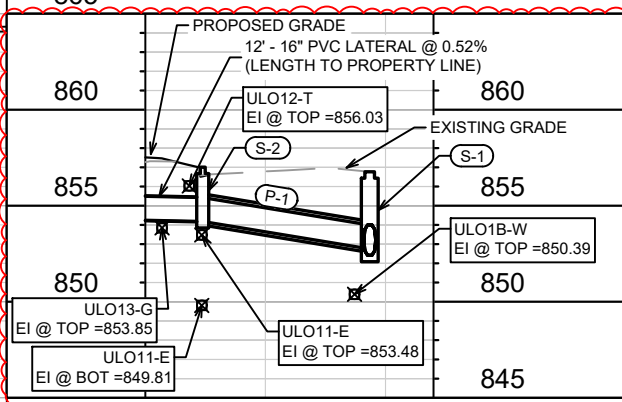
- NOTES**
- EXISTING SANITARY AND STORM LATERALS TO BE PLUGGED - SEE PERMIT #'S ENSRP-2024-04858 & ENSRP-2024-04860.
  - SANITARY LATERAL PLUG NOT REQUIRED. EXISTING LATERAL WILL EFFECTIVELY BE PLUGGED AS A RESULT OF SEWER MAIN ABANDONMENT.
  - 2" MILL & OVERLAY LIMITS SHOWN ARE APPROXIMATE. ACTUAL LIMITS WILL BE DETERMINED BY THE CITY CONSTRUCTION ENGINEER. OVERLAY PAVEMENT MIX SHALL BE 4 MT 58-28 S.
  - 10" CONCRETE REPLACEMENT LIMITS SHOWN ARE APPROXIMATE. ACTUAL LIMITS WILL BE DETERMINED BY THE CITY CONSTRUCTION ENGINEER. SAWCUT ALONG EXISTING CONCRETE JOINTS.
  - ULOS SHOWN ON THESE PLANS WERE PERFORMED PRIOR TO PLAN ISSUANCE. ADDITIONAL ULOS MAY BE REQUIRED AT THE DISCRETION OF CITY ENGINEERING.
  - WATER MAIN/SERVICE LOCATION AND RELOCATIONS ARE APPROXIMATE. COORDINATE HYDRANT RELOCATION AND WATER MAIN RELOCATIONS WITH MADISON WATER UTILITY, JEFF BELSHAW (JBELSHAW@MADISONWATER.ORG, 608-261-9835).
  - PRE-CAST SANITARY AND STORM STRUCTURE SHOP DRAWINGS SHALL BE SUBMITTED TO ERIC CEFALU AT CEFALU@CITYOFMADISON.COM FOR APPROVAL PRIOR TO DELIVERY TO SITE.

**DO NOT INSTALL NEW PUBLIC SANITARY SEWER MAIN AND/OR STRUCTURES ON WEST GORHAM STREET UNTIL A WDNR SANITARY SEWER EXTENSION PERMIT IS OBTAINED BY CITY ENGINEERING AND PROVIDED TO THE CONTRACTOR. FUTURE SANITARY SEWER ON GORHAM STREET IS SHOWN FOR REFERENCE ONLY (SEE U-1).**



**REVISION #1: 7/8/2025:**  
1. S-1 & S-2 RELOCATED

**REVISION #2: 8/19/2025:**  
1. GORHAM SANITARY INCLUDED AFTER WDNR PERMIT ISSUANCE



15351	MADISON, WI	9553	U-3
SEWER PLAN & PROFILE - W JOHNSON STREET		405 W GORHAM STREET	
15351		U-3	

M:\DESIGN\Projects\15351\CAD\Servers\15351\SWR-PipeNetwork.dwg

Scale: 1" = 40'

DATE: 8/19/2025 7:36 AM

DESIGNED BY: U-3

REVISION: 15351

DATE: 7/8/25

EAC: 8/19/25

BY: U-3

DATE: 7/8/25

BY: U-3

DATE: 7/8/25

BY: U-3

# SANITARY SEWER SCHEDULE

● REVISION 2 - 8/19//2025 EAC

405 W GORHAM STREET PROJECT NO. 15351	SHEET NO. U-4
SANITARY SEWER SCHEDULE	
CITY OF MADISON	

## PROPOSED SANITARY STRUCTURES

SAS NO.	STATION	LOCATION (OFFSET)	TOP OF CASTING	E.I.	DEPTH	NOTES
<b>NORTH BROOM STREET (BACK OF WALK)</b>						
SAS #1	22+88.49	LT-33.49	870.59	859.51	11.08	5' DIA.; [1]; [2]; [3]; [4]
<b>WEST GORHAM STREET (BACK OF WALK)</b>						
● SAS #2	11+05.77	LT-41.37	859.06	850.81	8.25	5' DIA. [7]; [8]; [3]; [4]

## SANITARY STRUCTURE ADJUSTMENTS/MODIFICATIONS

STRUC ID NO.	STATION	LOCATION (OFFSET)	TOP OF CASTING	PROP TOC	ADJ (FT)	NOTES
<b>NORTH BROOM STREET (BACK OF WALK)</b>						
SAS4950-083	21+86.38	LT-37.35	870.97	-	-	[5]
● SAS4950-055	10+34.11	LT-36.28	857.25	-	-	[9]; [10]

## SANITARY SEWER ULOS

ULO NO.	STATION	LOCATION (OFFSET)	TYPE	NOTES
<b>NORTH BROOM STREET (BACK OF WALK)</b>				
SANULO1-W	22+88.62	LT-25.17	8" DI WATER MAIN, TOP @ 865.93'	- NO CONFLICT EXPECTED
SANULO2-E	22+87.32	LT-14.78	ELECTRIC, TOP @ 868.68'	- NO CONFLICT EXPECTED
SANULO3-T	22+88.70	LT-10.39	TELEPHONE / FIBER OPTIC	[6]; TELEPHONE / FIBER OPTIC
<b>WEST GORHAM STREET (BACK OF WALK)</b>				
SANULO4-E	10+39.02	LT-26.33	6" ELECTRIC, TOP @ 854.45'	
SANULO5-E	10+44.52	LT-16.55	ELECTRIC DUCT PACAKGE, TOP @ 855.03', BOT @ 851.03'	
SANULO6A-T	10+51.07	LT-9.17	TELEPHONE / FIBER OPTIC (3X), TOP @ 855.92'	
SANULO6B-G	10+52.90	LT-7.71	8" STEEL GAS, TOP @ 854.26'	
● SANULO7-W	10+76.95	LT-42.00	6" DI WATER, TOP @ 851.92'	- ULO LOCATION NOT CLEAR, INSTALL WATER WINDOW AT CROSSING WITH SANITARY SEWER IF NEEDED
● SANULO8-E	11+06.59	LT-32.57	ELECTRIC DUCT PACAKGE, TOP @ 856.77', BOT @ 853.10'	- NO CONFLICT EXPECTED WITH LATERAL
● SANULO9-E	11+06.79	LT-20.61	ELECTRIC DUCT PACAKGE, TOP @ 856.68', BOT @ 854.02'	- NO CONFLICT EXPECTED WITH LATERAL
● SANULO10A-T	11+05.93	LT-10.57	TELEPHONE / FIBER OPTIC, TOP @ 857.12'	- NO CONFLICT EXPECTED WITH LATERAL
● SANULO10B-G	11+05.70	LT-7.64	8" STEEL (?) GAS, TOP @ 855.55'	- NO CONFLICT EXPECTED WITH LATERAL

## SPECIFIC NOTES

- [1] CONNECT STRUCTURE TO EXISTING 15" PVC SANITARY SEWER MAIN. TAP STRUCTURE ON THE UPSTREAM CONNECTION (EI(NW) = 859.51)
- [2] CONNECT 12" PVC SANITARY LATERAL FROM PROPOSED DEVELOPMENT (EI(SW) = 859.61)
- [3] INSTALL INTERNAL CHIMNEY SEAL IN CONFORMANCE WITH S.D.D. 5.7.17
- [4] INSTALL EXTERNAL SAS WRAP IN CONFORMANCE WITH SDD 5.7.2
- [5] CUT EXISTING SOUTHWEST INSIDE DROP CONNECTION OUT OF STRUCTURE AND PLUG EXISTING CORE
- [6] UTILITY NOT LOCATED DURING ULO FIELD INVESTIGATION. CONTRACTOR SHALL VERIFY UTILITY IS NOT IN CONFLICT WITH PROPOSED SEWER
- [7] TAP STRUCTURE ON THE UPSTREAM CONNECTION (EI(NE) = 852.22)
- [8] CONNECT 15" PVC SANITARY LATERAL FROM PROPOSED DEVELOPMENT (EI(SE) = 850.91)
- [9] TAP OVER EXISTING CORE FOR NEW PIPE (EI(NE) = 850.56)
- [10] RECONSTRUCT BENCH & FLOWLINE

## SANITARY STRUCTURE REMOVALS & ABANDONMENTS

STRUC ID NO.	STATION	LOCATION (OFFSET)	TOP OF CASTING	E.I.	DEPTH	NOTES
<b>WEST JOHNSON STREET (BACK OF WALK)</b>						
SAS4950-020	31+33.28	RT-37.26	859.00	850.85	8.15	ABN. 4' DIA.
SAS4950-029	33+09.56	RT-36.01	867.83	860.11	7.72	ABN. 4' DIA.

## SANITARY PIPE REMOVALS & ABANDONMENTS

REMOVE FROM	REMOVE TO	LGTH (FT)	PAID (Y/N)	REM LGTH (FT)	REM LGTH PAID (FT)	ABN LGTH (FT)	SLURRY CY	PIPE SIZE	PIPE TYPE	NOTES
<b>WEST JOHNSON STREET (BACK OF WALK)</b>										
SAS4950-068	SAS4950-020	53	Y	-	-	53	0.69	8"	PVC	
SAS4950-020	SAS4950-029	176	Y	-	-	176	2.28	8"	PVC	

## PROPOSED SANITARY PIPES

FROM (DNSTM)	TO (UPSTM)	DWNSTRM E.I.	UPSTRM E.I.	PLAN LGTH (FT)	SLOPE (%)	PVC TYPE	NOTES
<b>WEST GORHAM STREET (BACK OF WALK)</b>							
● SAS4950-055	SAS #2	850.56	850.81	71	0.35	15"	SDR-35

# STORM SEWER SCHEDULE

REVISION 1 - 7/8/2025 EAC

405 W GORHAM STREET PROJECT NO. 15351	SHEET NO. U-5
STORM SEWER SCHEDULE	
CITY OF MADISON	

## PROPOSED STORM STRUCTURES

STRUC. NO.	STATION	LOCATION (OFFSET)	TYPE	TOP OF CASTING	E.I.	DEPTH	NOTES
<b>WEST JOHNSON STREET (BACK OF WALK)</b>							
φ S-1	30+69.63	RT-49.28	3'X3' STORM SAS	856.77	852.42	4.35	FP; W/R-1550-0054; [1]
φ S-2	30+69.53	RT-14.50	H-INLET	857.01	854.18	2.83	FP; W/R-3067-7004-V; [2]

## PROPOSED STORM PIPES

PIPE NO.	FROM (DNSTM)	TO (UPSTM)	DISCH. E.I.	INLET E.I.	PLAN (PAY) LGTH (FT)	PIPE LGTH (FT)	SLOPE (%)	PIPE SIZE	TYPE	NOTES
<b>WEST JOHNSON STREET (BACK OF WALK)</b>										
φ P-1	S-1	S-2	852.75	854.18	35	32	4.47%	15"	RCP	[10]

## STORM PIPE REMOVALS & ABANDONMENTS

PIPE REMOVAL NO.	REMOVE FROM	REMOVE TO	LGTH (FT)	PAID (Y/N)	REM PAID (FT)	ABN LGTH (FT)	SLURRY (CY)	PIPE SIZE	PIPE TYPE	NOTES
<b>WEST JOHNSON STREET (BACK OF WALK)</b>										
ABN-1	EX STM SEWER MAIN	EX PRIVATE INLET #1	52	Y	-	52	-	6"	[7]	APRX. 2 PLUGS
ABN-2	EX STM SEWER MAIN	EX PRIVATE INLET #2	52	Y	-	52	-	6"	[7]	APRX. 2 PLUGS
ABN-3	EX STM SCUPPER	EX RETAINING WALL DRAIN	20	Y	-	20	-	[7]	[7]	APRX. 2 PLUGS
ABN-4	EX STM SCUPPER	EX ROOF DRAIN	10	Y	-	10	-	[7]	[7]	APRX. 2 PLUGS

## STORM STRUCTURE ADJUSTMENTS

STRUC. NO.	ID NO.	STATION	LOCATION (OFFSET)	EX TOC	PROP TOC	ADJ (FT)	NOTES
<b>WEST JOHNSON STREET (BACK OF WALK)</b>							
ADJ-1	IN4950-082	31+12.89	RT-14.55	858.42	-	-	[5]; [6]

## STORM SEWER ULOs

ULO NO.	STATION	LOCATION (OFFSET)	TYPE	NOTES
<b>WEST JOHNSON STREET (BACK OF WALK)</b>				
ULO1A-G	30+50.44	RT-46.91		GAS, TOP @ 850.88' - NO CONFLICT EXPECTED, ALSO NOT IN ALIGNMENT OF NEW STORM
ULO1B-W	30+44.44	RT-46.19		12" SAND CAST WATER MAIN, TOP @ 850.39' - NO CONFLICT EXPECTED
ULO2A-G	30+41.67	RT-14.92		[8]: GAS
ULO2B-E	30+44.50	RT-14.98		ELECTRIC DUCT PACKAGE, TOP @ 851.62', BOT @ 848.62' - NO CONFLICT EXPECTED
ULO3-G	30+43.78	RT-6.26		GAS, TOP @ 853.18' - NO CONFLICT EXPECTED
ULO4-T	30+43.20	RT-3.01		TELEPHONE, TOP @ 853.63' - NO CONFLICT EXPECTED
ULO5A-E	31+12.68	RT-9.29		[9]; ELECTRIC, TOP @ 856.98' - **POSSIBLE CONFLICT - SEE NOTE 9**
ULO5B-T	31+13.19	RT-6.84		[9]; 6" TELEPHONE (2X), TOP @ 855.59' - **POSSIBLE CONFLICT BUT PVT STM SHOULD BE ABOVE UTILITY - SEE NOTE 9**
ULO5C-G	31+13.45	RT-6.08		[9]; GAS, TOP @ 855.64' - **POSSIBLE CONFLICT BUT PVT STM SHOULD BE ABOVE UTILITY - SEE NOTE 9**
ULO6A-E	33+68.59	RT-10.75		ELECTRIC, TOP @ 868.47'
ULO6B-T	33+68.68	RT-8.38		TELEPHONE DUCT PACKAGE, TOP @ 868.65', BOT @ 865.65'
ULO7-G	33+68.47	RT-6.04		GAS, TOP @ 868.35'
ULO8A-STM	33+67.61	RT-48.66		24" RCP STM(?), TOP @ 865.90'
ULO8B-W	33+67.92	RT-45.82		12" SAND CAST WATER MAIN, TOP @ 864.02'
φ ULO11-E	30+71.13	RT-14.30		ELECTRIC DUCT PACKAGE, TOP @ 853.48', BOT @ 849.81' - NO CONFLICT EXPECTED
φ ULO12-T	30+70.20	RT-11.69		[9]; 6"(?) TELEPHONE, TOP @ 856.03' - **POSSIBLE CONFLICT BUT PVT STM SHOULD BE BELOW - SEE NOTE 9**
φ ULO13-G	30+65.68	RT-6.04		GAS, TOP @ 853.85' - NO CONFLICT EXPECTED

## SPECIFIC NOTES

- [1] CONNECT STRUCTURE TO EXISTING 19"X30" HERCP STORM SEWER MAIN
- φ [2] CONNECT 16" PVC PRIVATE STORM FROM PROPOSED DEVELOPMENT (EI(NW) = 854.18)
- [5] STORM TAP, CONNECT 12" PVC PRIVATE STORM FROM PROPOSED DEVELOPMENT (EI(NW) = 855.62)
- [6] REPLACE EXISTING CASTING WITH DRIVEWAY CASTING (W/R 3290-A), FLIP CASTING TO FIT IN TYPE "X" CURB
- [7] SIZE AND/OR MATERIAL UNKNOWN - DETERMINE IN FIELD
- φ [8] UTILITY NOT LOCATED DURING ULO FIELD INVESTIGATION. CONTRACTOR SHALL VERIFY UTILITY IS NOT IN CONFLICT WITH PROPOSED SEWER
- [9] IF CONFLICT WITH PRIVATE UTILITY IS ENCOUNTERED, THE CONTRACTOR SHALL COORDINATE WITH PRIVATE UTILITIES TO RELOCATE AND/OR ADJUST AS NEEDED
- [10] INSTALL STYROFOAM INSULATION AT WATER CROSSING

## STANDARD NOTES:

- ABBREVIATIONS: AE = APRON ENDWALL; RCP = REINFORCED CONCRETE PIPE; HERCP = HORIZONTAL ELLIPTICAL REINFORCED CONCRETE PIPE; DNA = DOES NOT APPLY; SAS = SEWER ACCESS STRUCTURE; LP = LOW POINT INLET STRUCTURE; FP = FIELD POURED STRUCTURE; TR = TOP OF CONCRETE ROOF; NCM = NO CROWN MATCH FOR PIPES; UD = UNDERDRAIN

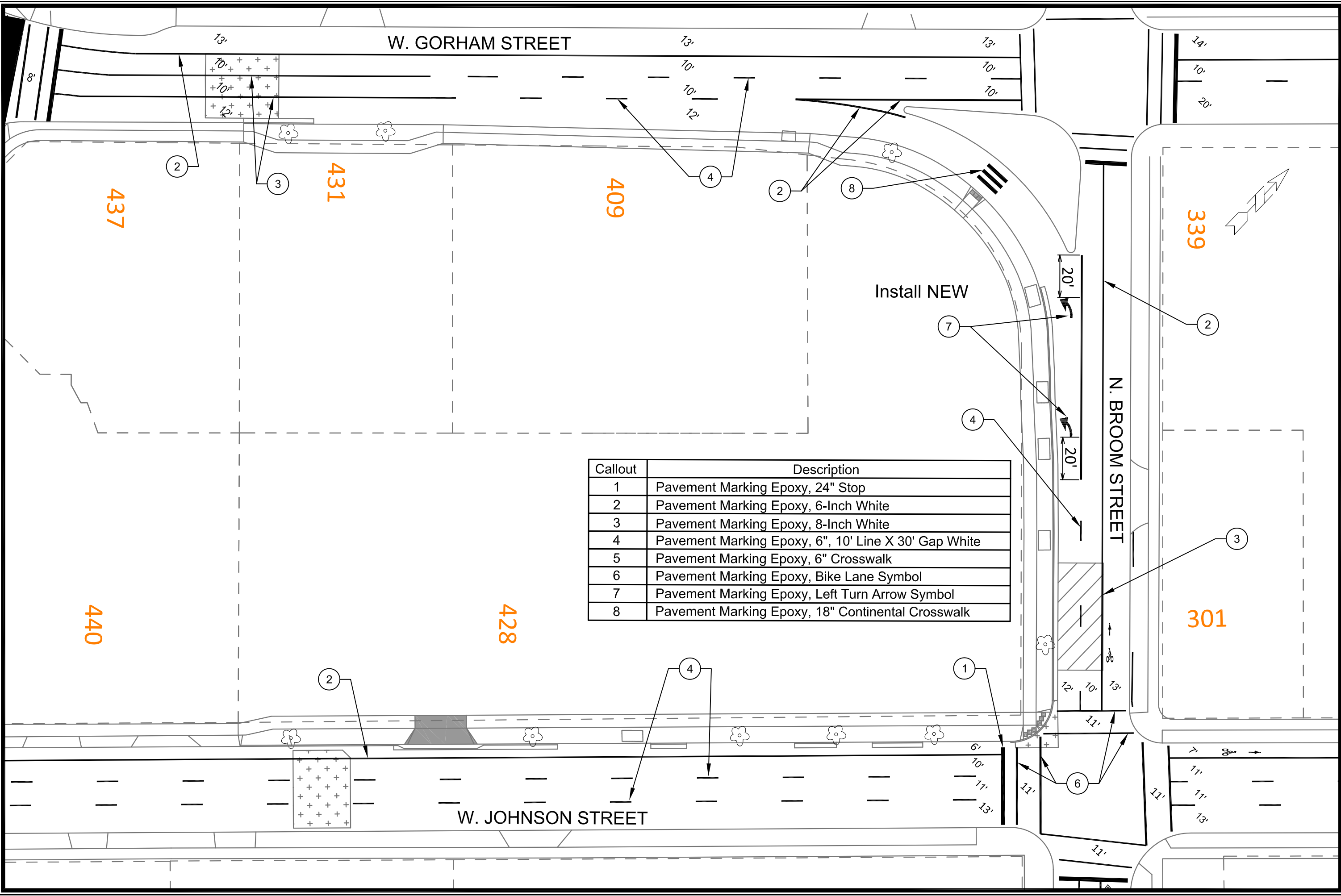
- PLAN LENGTH (PAY LENGTH) IS FROM CENTER OF STRUCTURE TO CENTER OF STRUCTURE. PIPE LENGTH IS ACTUAL LENGTH OF PIPE FROM STRUCTURE WALL TO STRUCTURE WALL. SLOPE CALCULATED USING PIPE LENGTH.
- TOP OF CASTING GRADE GIVEN IS THE TOP OF CURB FOR INLET STRUCTURES AND THE FLOWLINE OF THE CLOSED CASTING FOR SAS UNLESS NOTED OTHERWISE.
- APPROXIMATE DISCHARGE E.I. GIVEN, ADJUST E.I. AND PIPE SLOPE IN THE FIELD.
- ALL REINFORCED CONCRETE PIPES TO BE CLASS 3 UNLESS OTHERWISE NOTED.

- ALL FIELD POURED SAS STORM STRUCTURES SHALL BE CONSTRUCTED IN ACCORDANCE WITH STANDARD DETAIL DRAWING 5.7.3. ALL PRECAST SAS STORM STRUCTURES SHALL BE CONSTRUCTED IN ACCORDANCE WITH STANDARD DETAIL DRAWING 5.7.5.

- ALL STRUCTURES CALLED OUT AS FIELD POURED SHALL BE FIELD POURED. ALL OTHER STRUCTURES STORM AND SANITARY (NOT INDICATED AS FIELD POURED) SHALL BE SUBMITTED TO CITY ENGINEERING FOR APPROVAL ECFALU@CITYOFMADISON.COM ((608) 243-5894).
- ALL REBAR FOR FIELD POURED STRUCTURES SHALL BE EPOXY COATED. ANY EXPOSED STEEL SHALL BE TOUCHED UP OR RECOATED PRIOR TO USE.

- SURVEYOR TO CONFIRM THAT ALL INLET STATION / OFFSETS LINE UP WITH PROPOSED CURB AND GUTTER.





Install NEW

Callout	Description
1	Pavement Marking Epoxy, 24" Stop
2	Pavement Marking Epoxy, 6-Inch White
3	Pavement Marking Epoxy, 8-Inch White
4	Pavement Marking Epoxy, 6", 10' Line X 30' Gap White
5	Pavement Marking Epoxy, 6" Crosswalk
6	Pavement Marking Epoxy, Bike Lane Symbol
7	Pavement Marking Epoxy, Left Turn Arrow Symbol
8	Pavement Marking Epoxy, 18" Continental Crosswalk

15351	MADISON, WI	CONTRACT NO: ---	DATE	BY
PAVEMENT MARKING PLAN		405 W. GORHAM STREET		REVISION
M:\DESIGN\Projects\15351\CAD\Traffic\15351\TE-PavementMarking.dwg		15351		DATE
15351		PM-1		DESIGNED BY: SDM
PM-1		15351		DATE: 2/18/2025 2:18 PM
15351		PM-1		SCALE: 1" = 40'



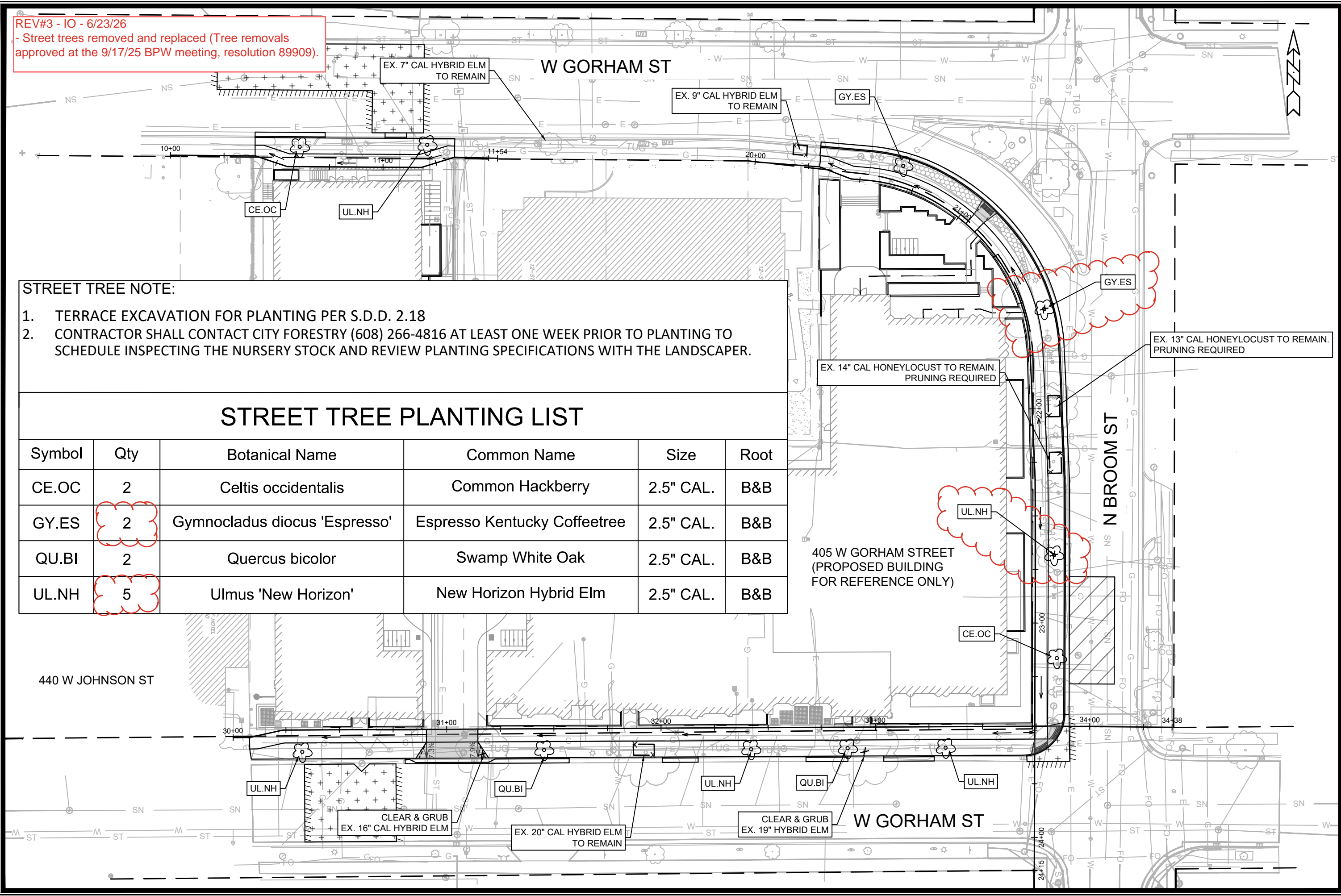
15351  
PM-1

REV#3 - IO - 6/23/26  
 - Street trees removed and replaced (Tree removals approved at the 9/17/25 BPW meeting, resolution 89909).

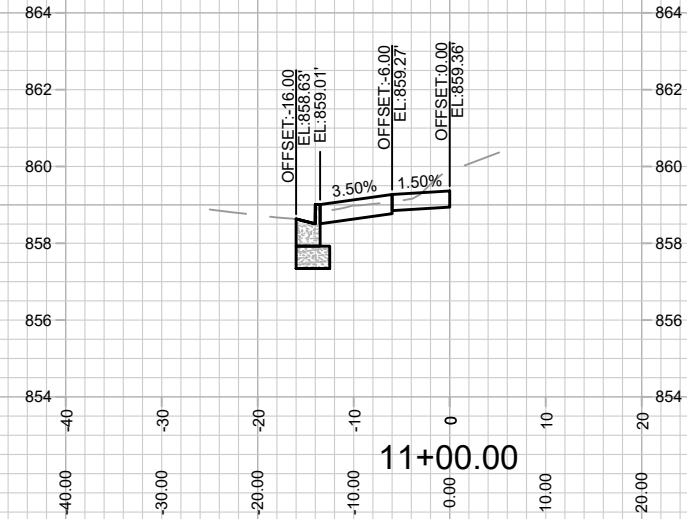
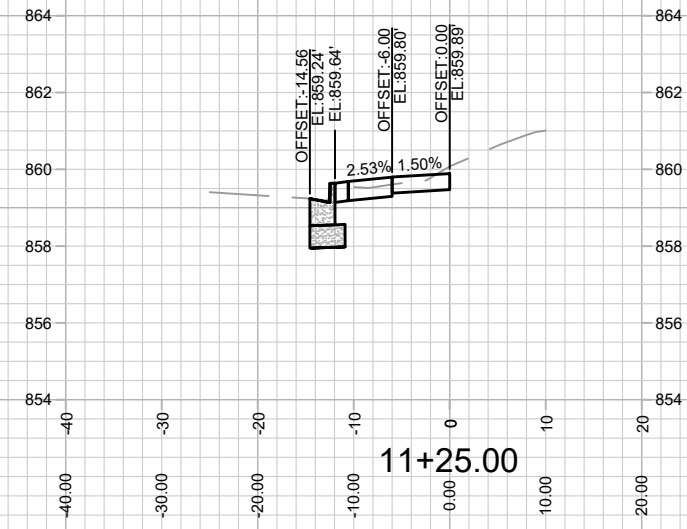
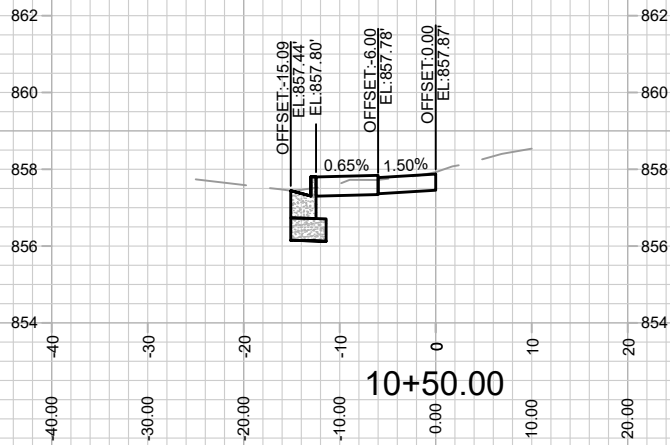
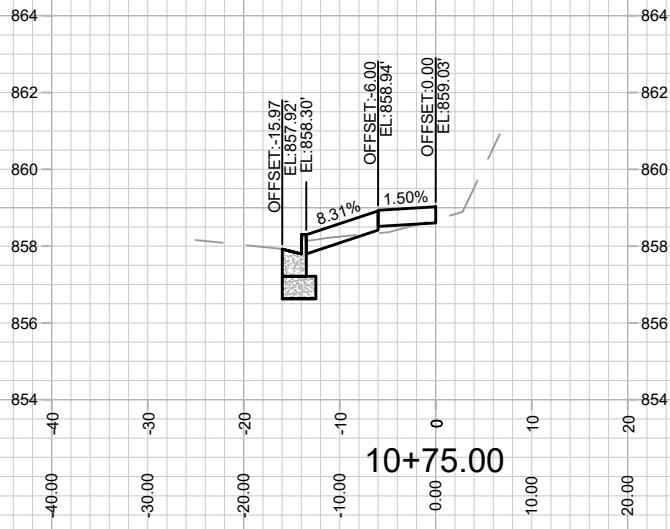
- STREET TREE NOTE:**
1. TERRACE EXCAVATION FOR PLANTING PER S.D.D. 2.18
  2. CONTRACTOR SHALL CONTACT CITY FORESTRY (608) 266-4816 AT LEAST ONE WEEK PRIOR TO PLANTING TO SCHEDULE INSPECTING THE NURSERY STOCK AND REVIEW PLANTING SPECIFICATIONS WITH THE LANDSCAPER.

### STREET TREE PLANTING LIST

Symbol	Qty	Botanical Name	Common Name	Size	Root
CE.OC	2	<i>Celtis occidentalis</i>	Common Hackberry	2.5" CAL.	B&B
GY.ES	2	<i>Gymnocladus dioica</i> 'Espresso'	Espresso Kentucky Coffeetree	2.5" CAL.	B&B
QU.BI	2	<i>Quercus bicolor</i>	Swamp White Oak	2.5" CAL.	B&B
UL.NH	5	<i>Ulmus</i> 'New Horizon'	New Horizon Hybrid Elm	2.5" CAL.	B&B



15351	MADISON, WI	9553	15351
LANDSCAPING PLAN		CONTRACT NO.:	
405 W GORHAM STREET			
M:\DESIGN\Projects\15351\CAD\Streets\15351EN-PnP.dwg			
CITY OF MADISON WISCONSIN			
15351	L-1		



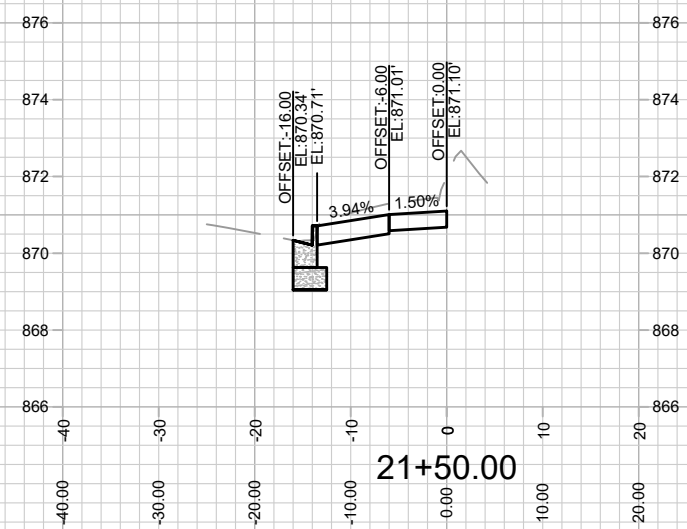
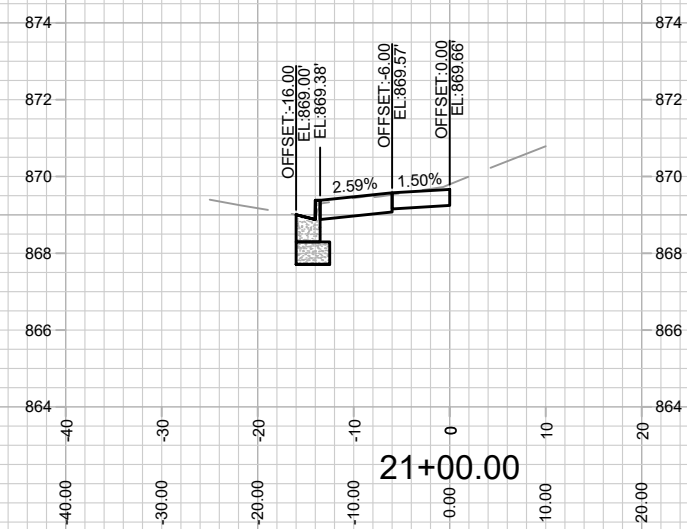
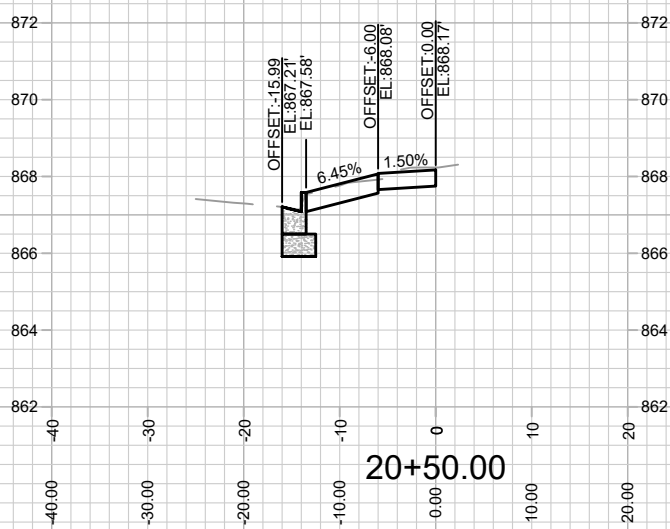
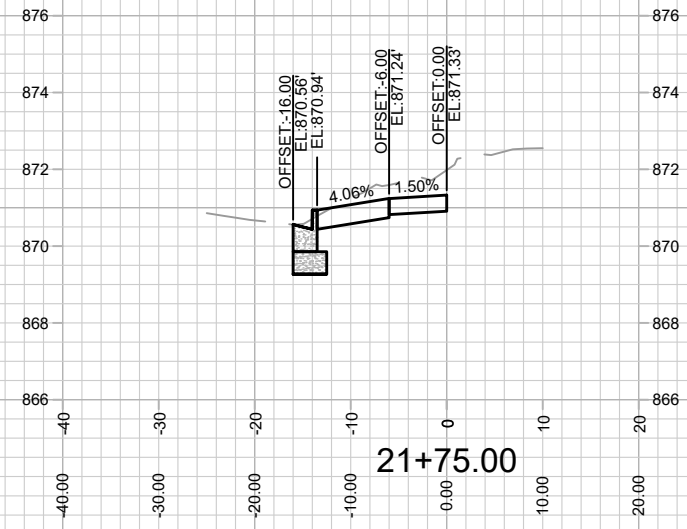
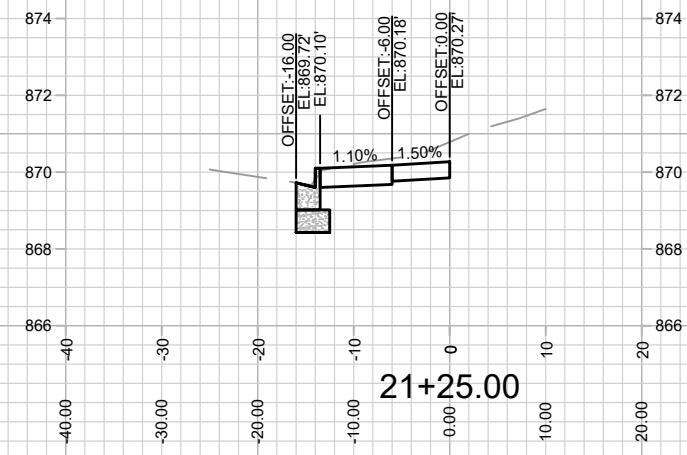
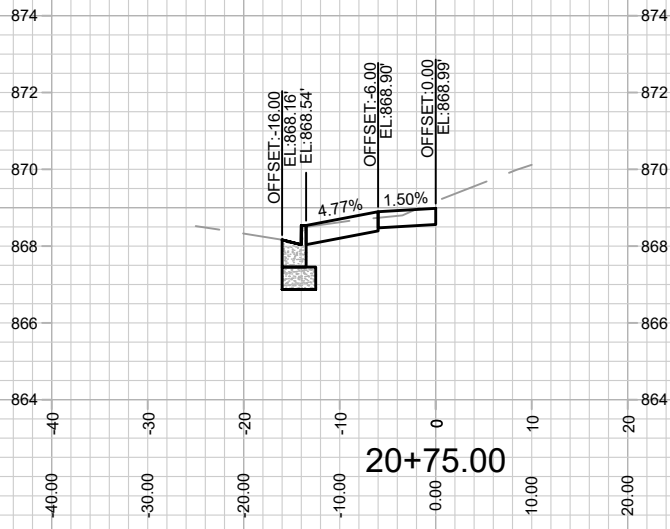
15351  
X-1

CROSS SECTIONS - W GORHAM STREET  
405 W GORHAM STREET

M:\DESIGN\Projects\15351\CAD\Streets\15351\EN-AIP\Prof&Corridor\_Setup.dwg

15351  
MADISON, WI  
CONTRACT NO: 9553

MARK	REVISION	DATE	BY
15351 <td>5/29/2025 9:38 AM <td></td> <td>X-1</td> </td>	5/29/2025 9:38 AM <td></td> <td>X-1</td>		X-1



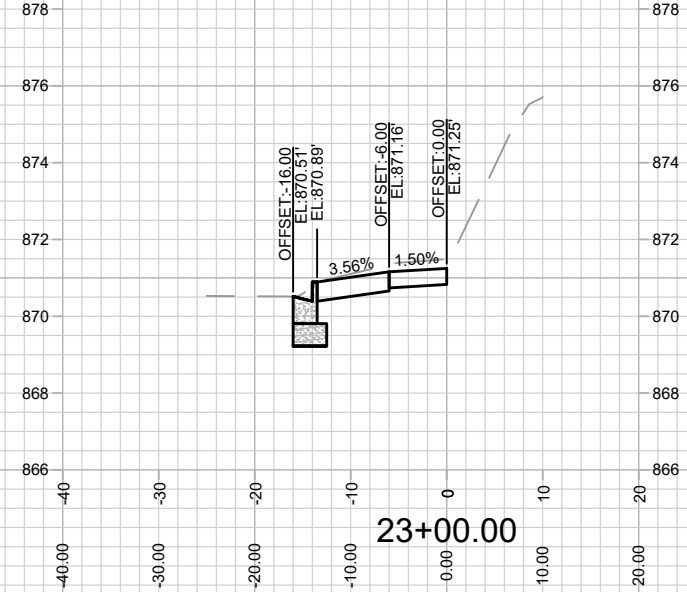
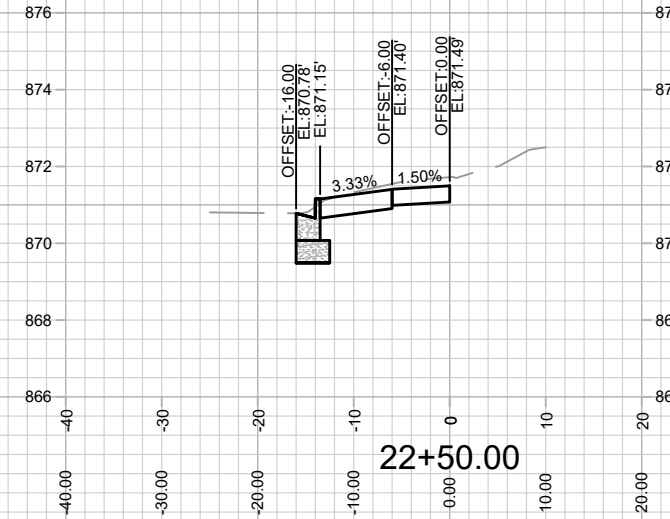
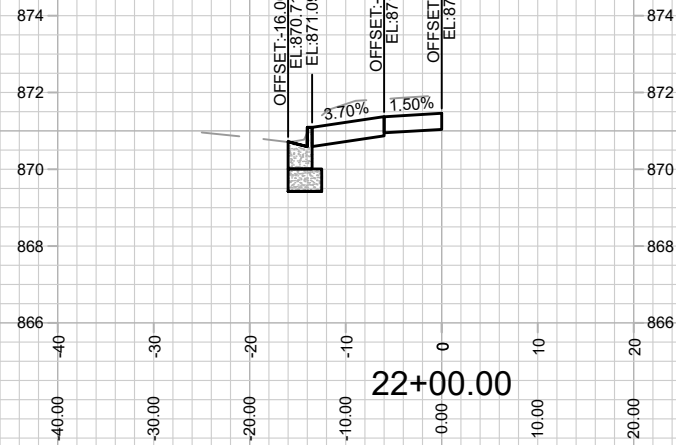
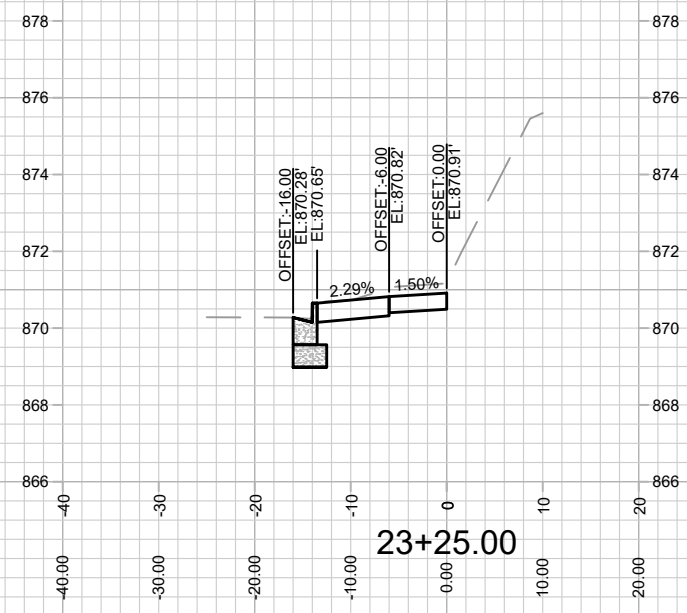
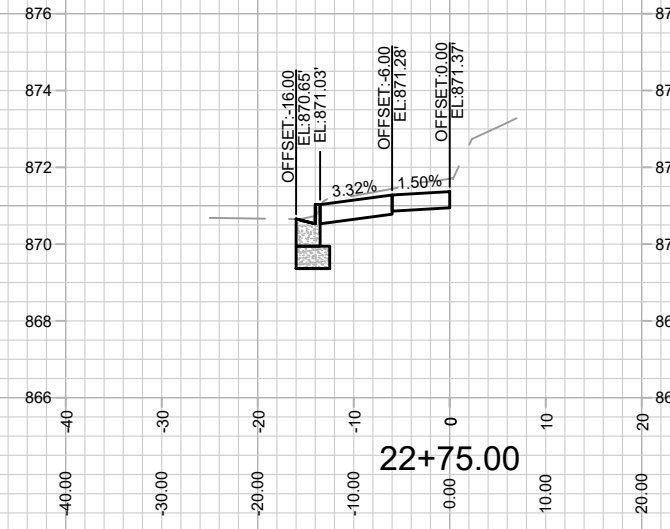
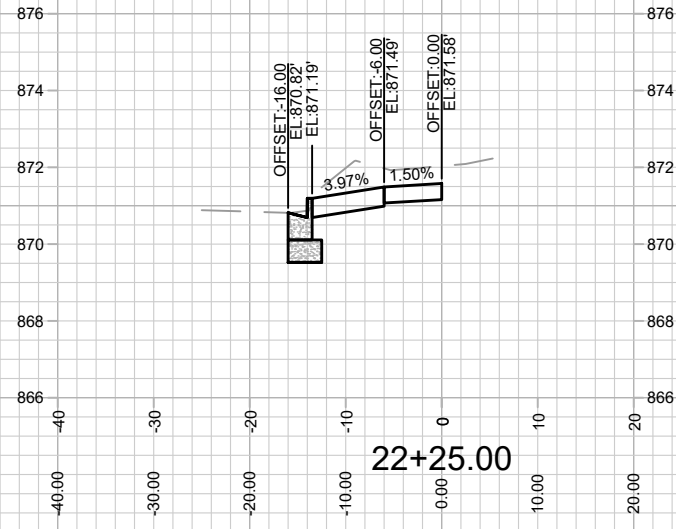
MARK	REVISION	DATE	BY
15351	5/29/2025 9:46 AM		
Designed By: ID			Scale: 1" = 20'
Contract No: 9553			X-2

15351  
 MADISON, WI  
 405 W GORHAM STREET  
 CONTRACT NO: 9553



15351  
 X-2

M:\DESIGN\Projects\15351\CAD\Streets\15351-EN-AIP\Prof&Corridor\_Setup.dwg



MARK	REVISION	DATE	BY

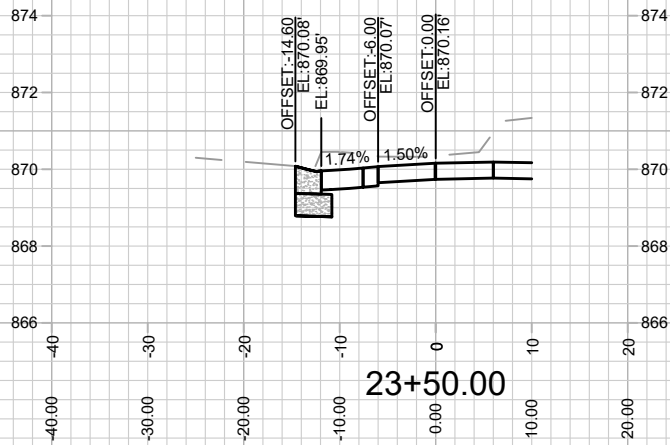
15351  
MADISON, WI  
9553  
CONTRACT NO:

CROSS SECTIONS - N BROOM STREET  
405 W GORHAM STREET  
M:\DESIGN\Projects\15351\CAD\Streets\15351\EN-A\IPof&Corridor\_Setup.dwg



15351  
X-3

X-3



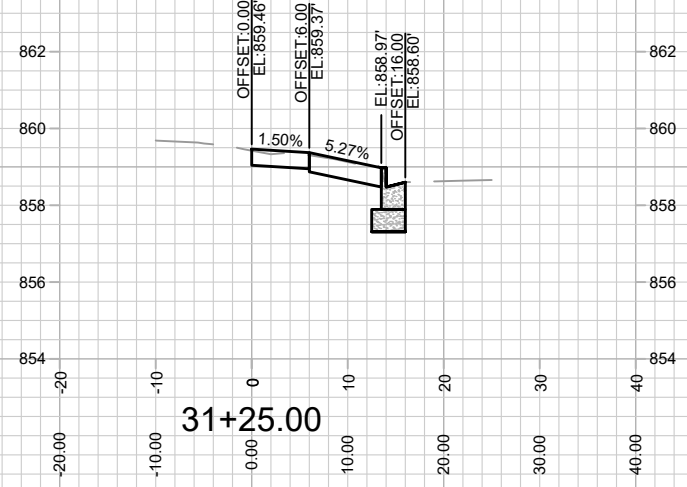
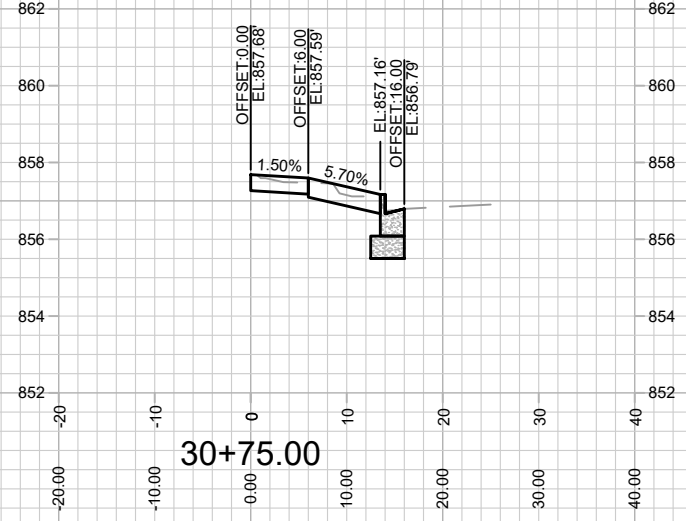
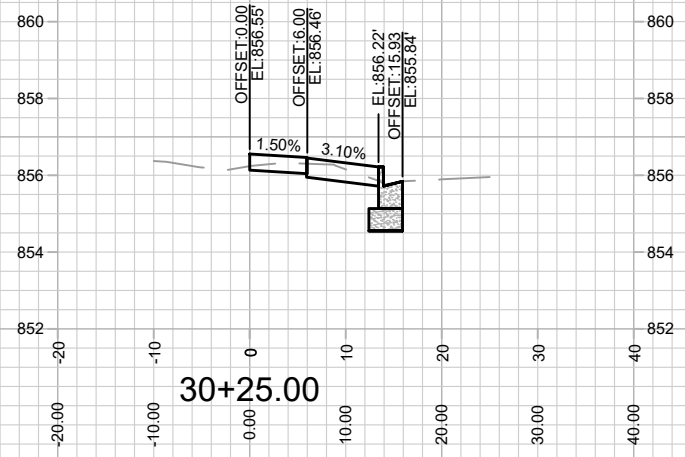
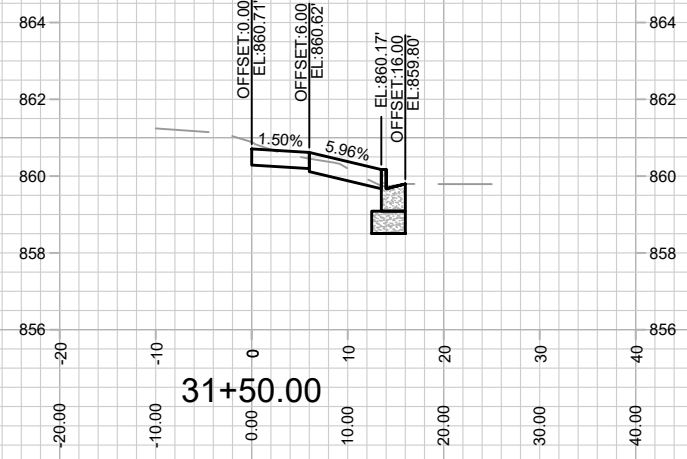
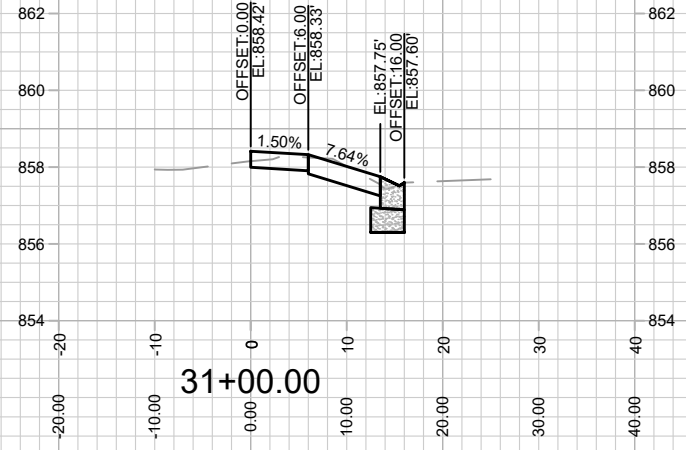
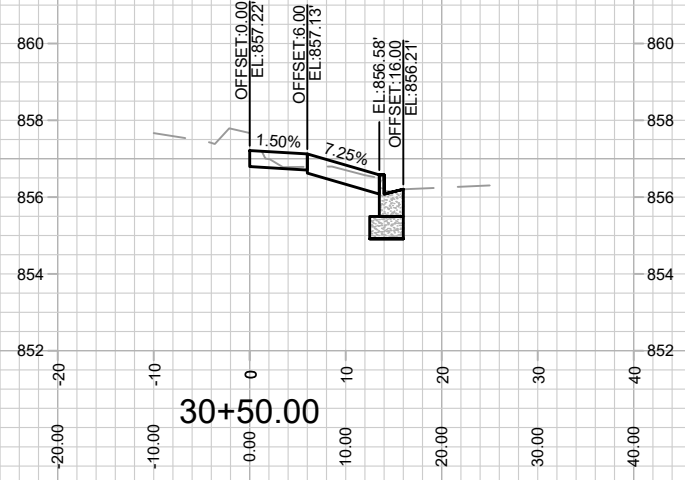
15351  
X-4

CROSS SECTIONS - N BROOM STREET  
405 W GORHAM STREET

M:\DESIGN\Projects\15351\CAD\Streets\15351-EN-AIP\Prof&Corridor\_Setup.dwg

15351  
MADISON, WI  
CONTRACT NO: 9553

MARK	REVISION	DATE	BY
15351 <td>15351 <td>5/29/2025 9:46 AM <td>X-4</td> </td></td>	15351 <td>5/29/2025 9:46 AM <td>X-4</td> </td>	5/29/2025 9:46 AM <td>X-4</td>	X-4



15351  
X-5

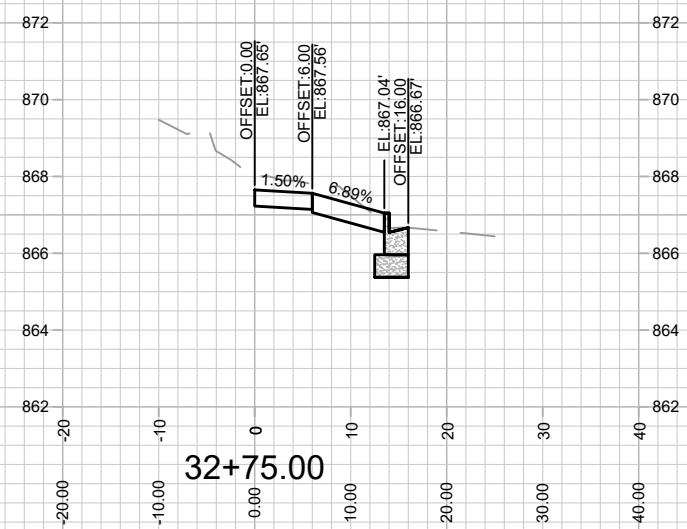
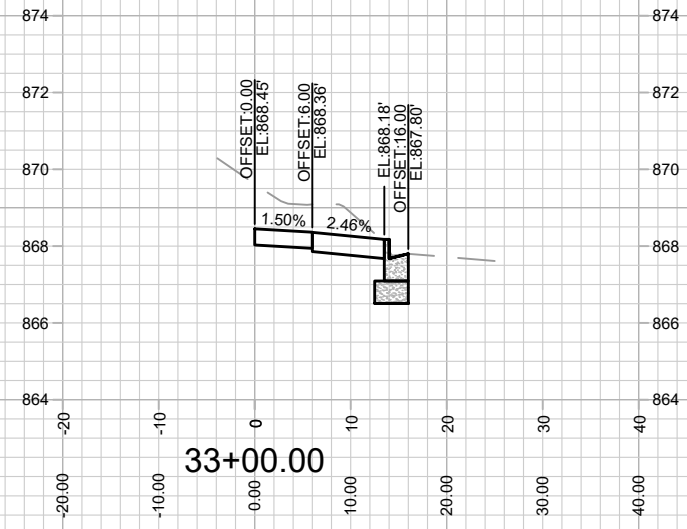
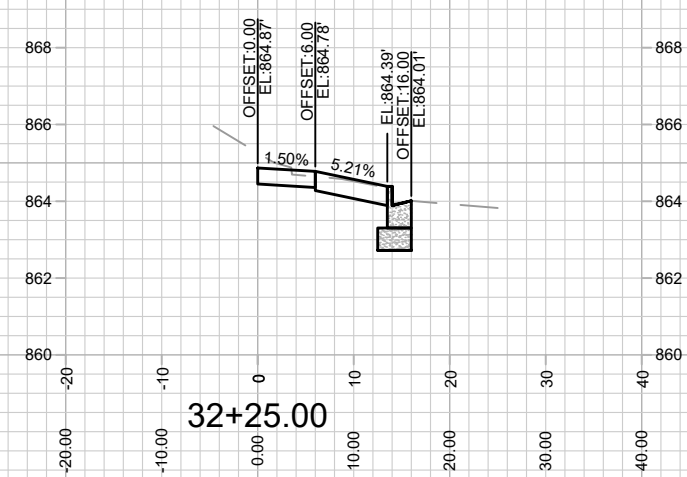
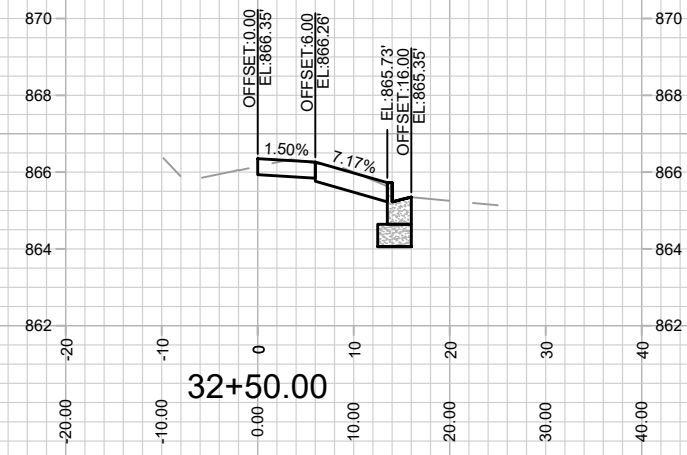
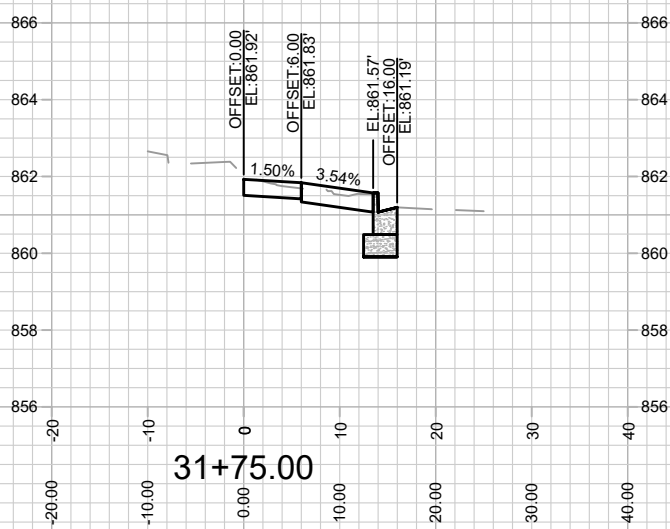
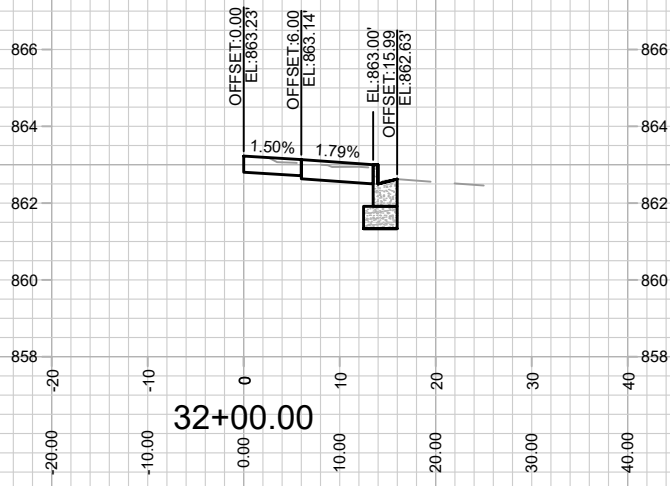
CROSS SECTION - W JOHNSON STREET  
405 W GORHAM STREET

M:\DESIGN\Projects\15351\CAD\Streets\15351-EN-AIP\Prof&Corridor\_Setup.dwg

15351  
MADISON, WI  
9553

CONTRACT NO:

MARK	REVISION	DATE	BY
15351 <td>6/2/2025 8:29 AM <td></td> <td>X-5</td> </td>	6/2/2025 8:29 AM <td></td> <td>X-5</td>		X-5



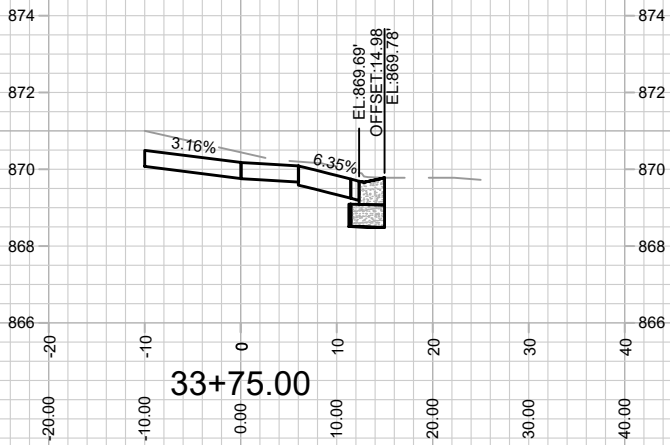
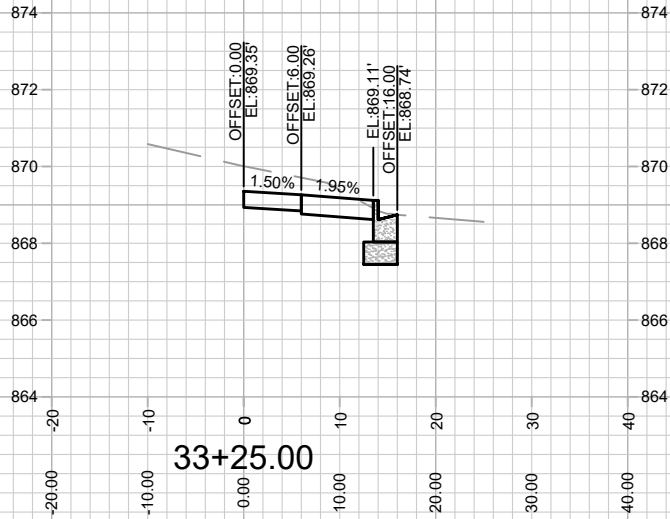
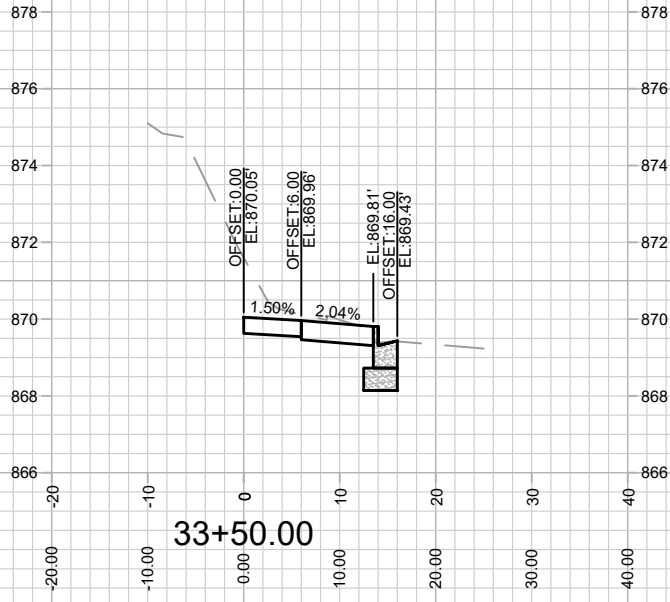
MARK	REVISION	DATE	BY

15351  
MADISON, WI  
9553  
CONTRACT NO:

CROSS SECTION - W JOHNSON STREET  
405 W GORHAM STREET  
M:\DESIGN\Projects\15351\CAD\Streets\15351\EN-A\Prof&Corridor\_Setup.dwg



15351  
X-6



15351  
X-7

CROSS SECTION - W JOHNSON STREET  
405 W GORHAM STREET

M:\DESIGN\Projects\15351\CAD\Streets\15351-EN-AIP\Prof&Corridor\_Setup.dwg

15351  
MADISON, WI  
CONTRACT NO: 9553

MARK	REVISION	DATE	BY
15351	Designed By: 10	Date: 6/2/2025 8:29 AM	Scale: 1" = 20'
			X-7