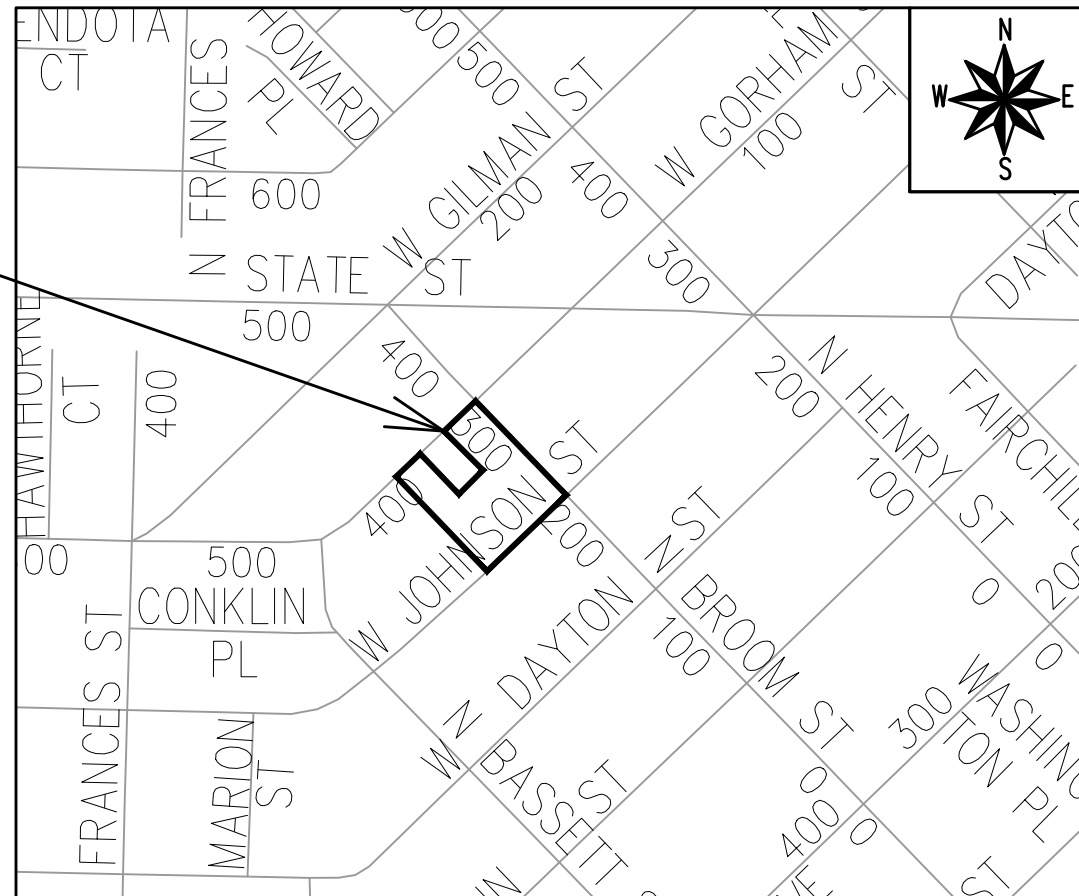




405 W GORHAM STREET

CITY PROJECT NO. 15351
CONTRACT NO. 9553

<i>SHEET NO. D1</i>	<i>GENERAL NOTES</i>
<i>SHEET NO. D2</i>	<i>TYPICAL SECTIONS</i>
<i>SHEET NO. P1-P4</i>	<i>STREET PLAN & PROFILE</i>
<i>SHEET NO. U1-U3</i>	<i>SEWER PLAN & PROFILE</i>
<i>SHEET NO. U4</i>	<i>SANITARY SEWER SCHEDULE</i>
<i>SHEET NO. U5</i>	<i>STORM SEWER SCHEDULE</i>
<i>SHEET NO. EI</i>	<i>ELECTRICAL PLAN</i>
<i>SHEET NO. PM1</i>	<i>PAVEMENT MARKING PLAN</i>
<i>SHEET NO. L1</i>	<i>LANDSCAPING PLAN</i>
<i>SHEET NO. X1-X7</i>	<i>CROSS SECTIONS</i>
<i>NO MAINTENANCE PLAN REQUIRED.</i>	



06/10/2025

06/10/2025

06/10/2025

06/10/2025

06/10/2025

ALL PROPOSED STREET TREE REMOVALS WITHIN THE RIGHT OF WAY SHALL BE REVIEWED BY CITY FORESTRY BEFORE THE PLAN COMMISSION MEETING. STREET TREE REMOVALS REQUIRE APPROVAL AND A TREE REMOVAL PERMIT ISSUED BY CITY FORESTRY. ANY STREET TREE REMOVALS REQUESTED AFTER THE DEVELOPMENT PLANS ARE APPROVED BY THE PLAN COMMISSION OR THE BOARD OF PUBLIC WORKS AND CITY FORESTRY WILL REQUIRE A MINIMUM OF A 72-HOUR REVIEW PERIOD WHICH SHALL INCLUDE THE NOTIFICATION OF THE ALDERPERSON WITHIN WHO'S DISTRICT IS AFFECTED BY THE STREET TREE REMOVAL(S) PRIOR TO A TREE REMOVAL PERMIT BEING ISSUED.

AS DEFINED BY SECTION 107.13 OF THE CITY OF MADISON STANDARD SPECIFICATIONS FOR PUBLIC WORKS CONSTRUCTION, LATEST EDITION: NO EXCAVATION IS PERMITTED WITHIN 5 FEET OF THE TRUNK OF THE STREET TREE OR WHEN CUTTING ROOTS OVER 3 INCHES IN DIAMETER. IF EXCAVATION IS NECESSARY, THE CONTRACTOR SHALL CONTACT MADISON CITY FORESTRY (266-4816) PRIOR TO EXCAVATION. CITY OF MADISON FORESTRY PERSONNEL SHALL ASSESS THE IMPACT TO THE TREE AND TO ITS ROOT SYSTEM PRIOR TO WORK COMMENCING. TREE PROTECTION SPECIFICATIONS CAN BE FOUND ON THE FOLLOWING WEBSITE: www.cityofmadison.com/engineering/developers-contractors/standard-specifications

THE LOCATION AND INFORMATION FOR PROPOSED NEW TREES, IN THE PUBLIC RIGHT OF WAY OR ON PUBLIC LANDS ARE APPROXIMATE AND ARE SHOWN FOR REFERENCE ONLY. THE LOCATIONS, SPECIFICATIONS AND PLANTING METHODS OF ALL PROPOSED NEW OR REPLACEMENT TREES IN THE PUBLIC RIGHT OF WAY OR ON PUBLIC LANDS SHALL BE APPROVED BY THE CITY FORESTER PRIOR TO INSTALLATION.

NO TREES IN THE RIGHT OF WAY OR ON PUBLIC LANDS SHALL BE TRIMMED, PRUNED, REMOVED OR ADVERSELY AFFECTED IN ANY WAY UNTIL THE DEVELOPER HAS RECEIVED WRITTEN PERMISSION FROM THE CITY ENGINEER OR CITY FORESTER. SAID WRITTEN PERMISSION SHALL INCLUDE LANGUAGE INDICATING THAT SECTION 10.101 OF THE MADISON GENERAL ORDINANCES AND ADMINISTRATIVE PROCEDURE MEMORANDUM NO. 6-2, REFERRING TO NOTIFICATION OF PROPERTY OCCUPANTS AND/OR OWNERS, HAS BEEN COMPLIED WITH.

DEVELOPER MUST SUBMIT A TRAFFIC CONTROL PLAN TO CITY TRAFFIC ENGINEERING AT LEAST 14 DAYS PRIOR TO THE START OF WORK. WORK SHALL NOT PROCEED UNTIL AN APPROVED TRAFFIC CONTROL PLAN IS IN PLACE.

CONTACT THE PROJECT ENGINEER AND DESIGNER, IKE OKAFOR, AT IOKAFOR@CITYOFMADISON.COM FOR CAD FILES AND ALIGNMENT DATA PRIOR TO STAKING.

CONTACT THE CITY CONSTRUCTION ENGINEER, KYLE FRANK, AT KFRANK@CITYOFMADISON.COM FOR PRECONSTRUCTION SCHEDULING, COORDINATION, AND INSPECTION.

UNDERDRAINS SHALL BE INSTALLED PER STANDARD DETAIL DRAWING 4.05 FOR 75' ON EACH SIDE OF THE LOW POINT, OR TO THE NEAREST CURB HIGH POINT. ALL UNDERDRAIN SHALL BE WRAPPED.

ALL GUTTERS SHALL DRAIN WITH A MINIMUM GRADE OF 0.5% TOWARD STORM SEWER INLETS.

ALL DITCHES SHALL DRAIN WITH A MINIMUM GRADE OF 0.5%

THE CROSS SLOPE OF SIDEWALKS AND BARRIER FREE SIDEWALK CURB RAMPS SHALL TYPICALLY BE 1.5%. THE LONGITUDINAL GRADE OF BARRIER FREE SIDEWALK CURB RAMPS SHALL NOT EXCEED 8.33%. ALL SIDEWALK RAMPS SHALL BE CONSTRUCTED ACCORDING TO S.D.D. 3.04. AT ALL OTHER LOCATIONS THE LONGITUDINAL GRADE OF SIDEWALKS SHALL NOT EXCEED 5.0 % OR THE ADJACENT STREET GRADE WHICHEVER IS GREATER NOR BE LESS THAN 0.5% AND SHALL DRAIN TOWARD STORM SEWER INLETS. SIDE SLOPES WITHIN TEN FEET OF A PUBLIC SIDEWALK SHALL NOT EXCEED 4:1. ALL SIDEWALK AND SIDEWALK RAMP ELEVATIONS AND GRADES SHALL BE FIELD VERIFIED AND SET TO COMPLY WITH THE CITY OF MADISON STANDARD SPECIFICATIONS AND THE A.D.A. GUIDELINES.

CURB STATION AND OFFSETS SHALL BE TO THE EDGE OF PAVEMENT UNLESS OTHERWISE INDICATED. CURB ELEVATIONS SHALL BE TO THE EDGE OF PAVEMENT UNLESS OTHERWISE INDICATED.

POWER POLES AND OTHER OBSTRUCTIONS SHALL BE MOVED TO PROVIDE 2 FEET MINIMUM OF CLEAR DISTANCE FROM ANY FACE OF CURB OR EDGE OF SIDEWALK UNLESS OTHERWISE INDICATED ON THE PLANS.

ANY INFORMATION SHOWN ON THIS PLAN, WHICH IS NOT PART OF THIS RIGHT-OF-WAY PROJECT, IS PRELIMINARY AND NOT FOR CONSTRUCTION.

THERE MAY BE EXISTING UTILITIES OR OTHER FEATURES WHICH ARE EITHER NOT SHOWN OR SHOWN INCORRECTLY ON THIS PLAN. IT IS THE RESPONSIBILITY OF THE DEVELOPER TO LOCATE AND IDENTIFY ALL UTILITIES AND TOPOGRAPHY WHICH MAY AFFECT THE CONSTRUCTION OF THESE IMPROVEMENTS.

ALL PERMANENT SIGNING AND POSTING WILL BE DETERMINED AND PROVIDED BY THE TRAFFIC ENGINEERING DIVISION, FOLLOWING CONSTRUCTION OF THESE IMPROVEMENTS.

THE DEVELOPER SHALL PROVIDE, INSTALL AND MAINTAIN ALL STREET END BARRICADES, SIGNING AND TRAFFIC CONTROL, AS REQUIRED BY THE CITY TRAFFIC ENGINEER.

PAVEMENT SAWCUTS SHALL BE AS DIRECTED BY THE CITY CONSTRUCTION ENGINEER. SAWCUTS SHOWN ON THE PLAN ARE APPROXIMATE.

CURB ON CUL DE SACS SHALL BE INSTALLED ACCORDING TO S.D.D 3.05.

ALL WORK IN THE RIGHT OF WAY AND PUBLIC EASEMENTS SHALL BE IN ACCORDANCE WITH THE CITY OF MADISON STANDARD SPECIFICATIONS FOR PUBLIC WORKS CONSTRUCTION, LATEST EDITION.

ALL PROPOSED IMPROVEMENTS IN THE RIGHT-OF-WAY ARE BASED ON SURVEY DATA PROVIDED BY THE DEVELOPER OR ITS CONSULTANT. IN THE CASE THAT THE PROPOSED IMPROVEMENTS CAN NOT BE INSTALLED PER THESE PLANS OR THE CITY OF MADISON STANDARD SPECIFICATION FOR PUBLIC WORKS CONSTRUCTION, LATEST EDITION, THE DEVELOPER SHALL BE RESPONSIBLE FOR THE COST OF EXTRA WORK DUE TO INACCURACIES OF THE SURVEY.

ALL UTILITY VERIFICATIONS AND ACCURACY OF THE DRAWINGS ARE THE RESPONSIBILITY OF THE DEVELOPER. ANY CONFLICTS THAT ARISE FROM MISSING OR ERRONEOUS INFORMATION WILL BE AT THE EXPENSE OF THE DEVELOPER. NO PRECAST STRUCTURES WILL BE APPROVED FOR STORM OR SANITARY SEWER UNTIL ALL POTENTIAL UTILITY CONFLICTS ARE RESOLVED.

IN LOCATIONS WHERE PAVEMENT RESTORATION IS NOT IDENTIFIED ADJACENT TO CURB AND GUTTER REPLACEMENT, IT IS ASSUMED THAT CURB AND GUTTER WILL BE REPLACED WITHOUT DAMAGING ADJACENT PAVEMENT. IF DAMAGED, THE MILL AND OVERLAY LIMITS SHALL BE EXTENDED BY THE CITY CONSTRUCTION ENGINEER AS NECESSARY TO MEET THE STANDARD PATCHING CRITERIA.

CONVENTIONAL SIGNS

FIELD VERIFY ALL UTILITY LOCATIONS

GAS

STORM SEWER

SANITARY SEWER

WATER

BURIED ELECTRIC

OVERHEAD ELECTRIC

POWER POLE

ADA COMPLIANT RAMP W/
DETECTABLE WARNING FIELD

COMBUSTIBLE FLUIDS

— G —

— ST —

— SAN —

— W —

— E —

— OH —

15351

MADISON, WI

9553

CONTRACT NO:

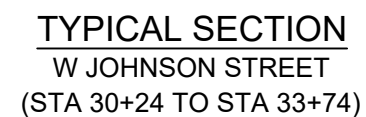
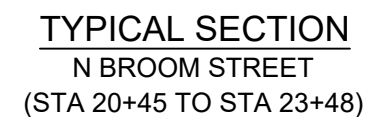
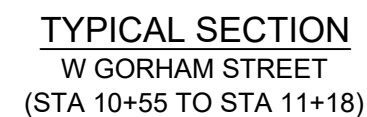
GENERAL NOTES

405 W GORHAM STREET

M:\DESIGN\Projects\15351\CAD\Streets\15351\EN-Details.dwg

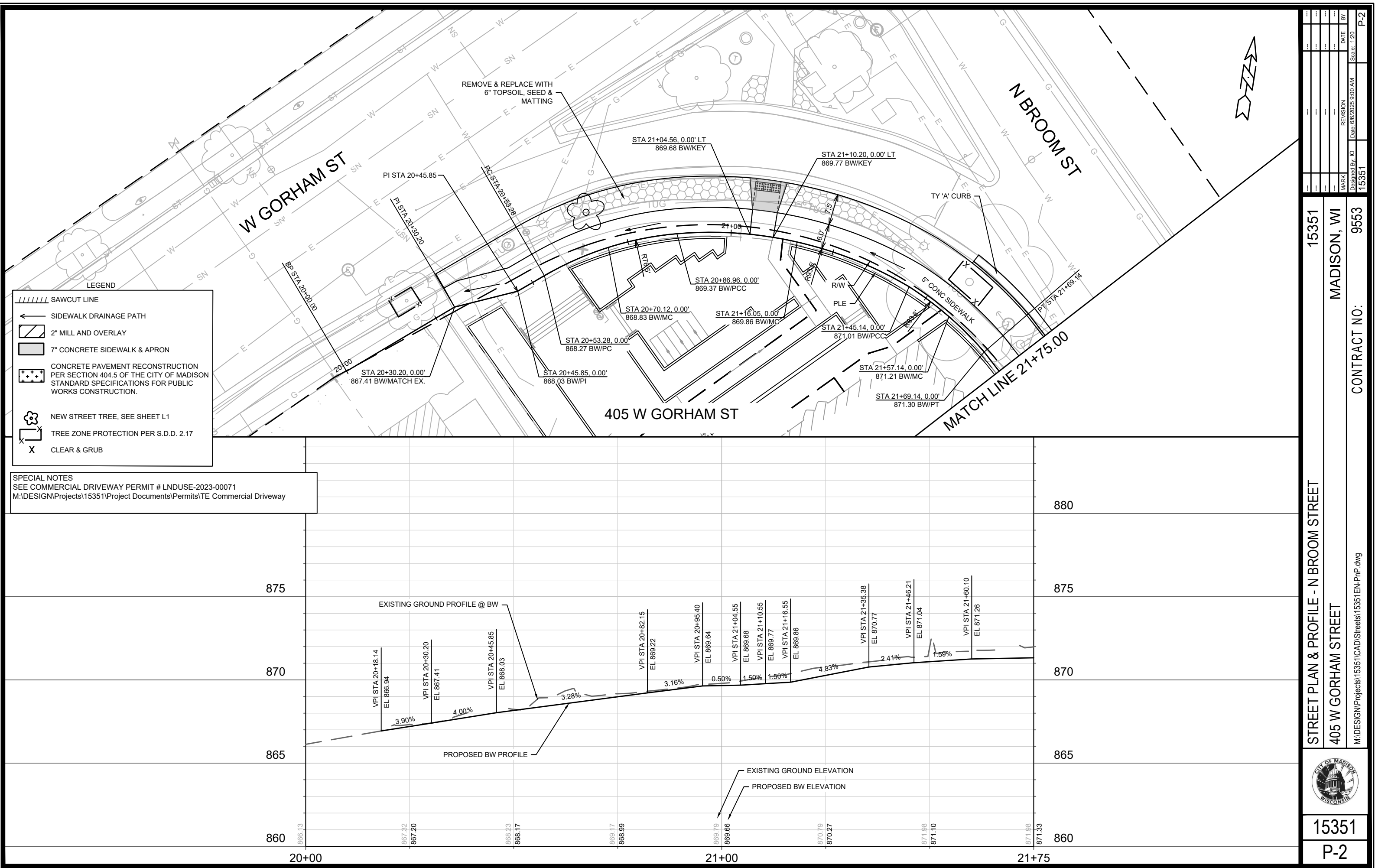
15351

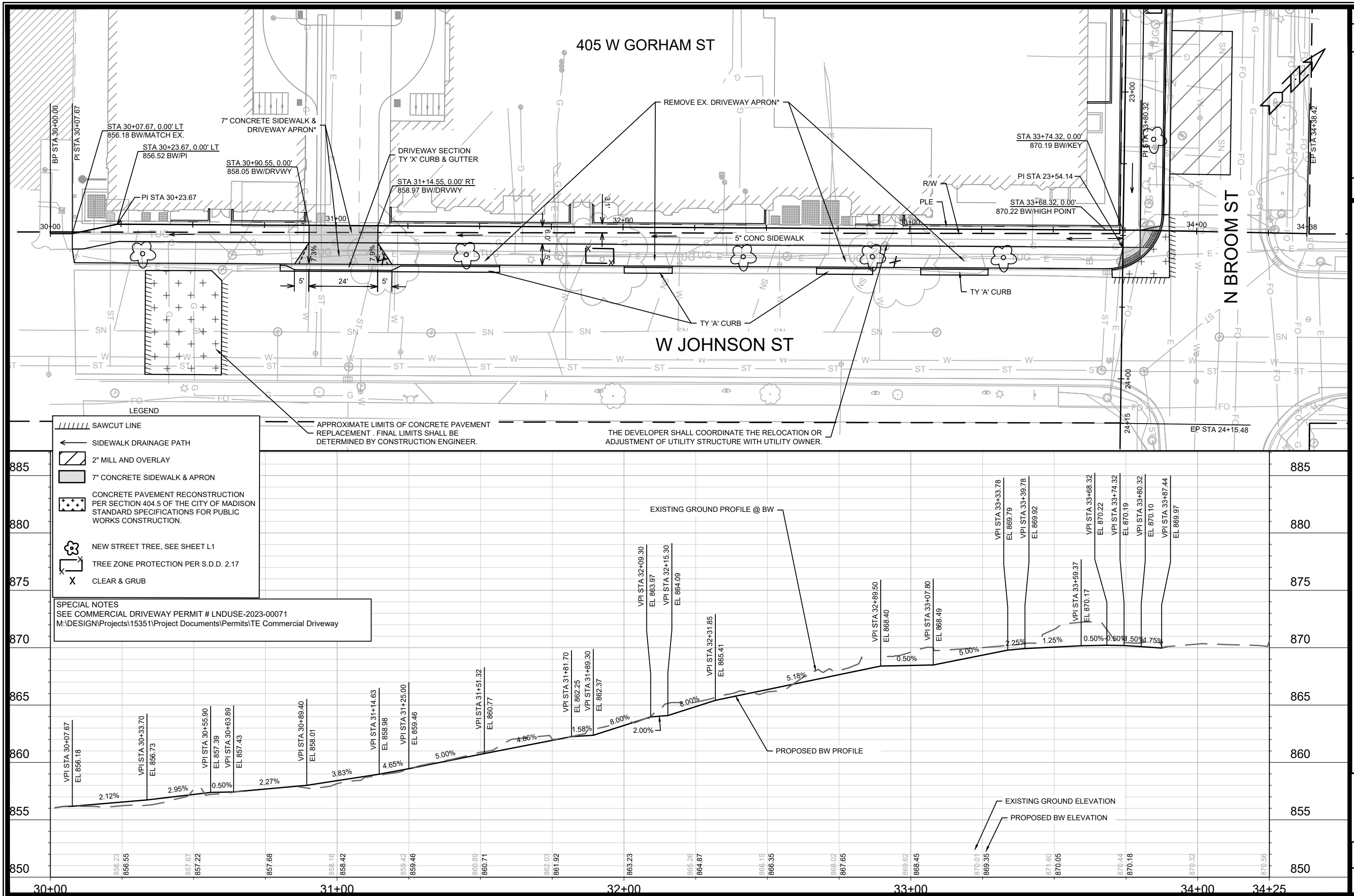
D-1

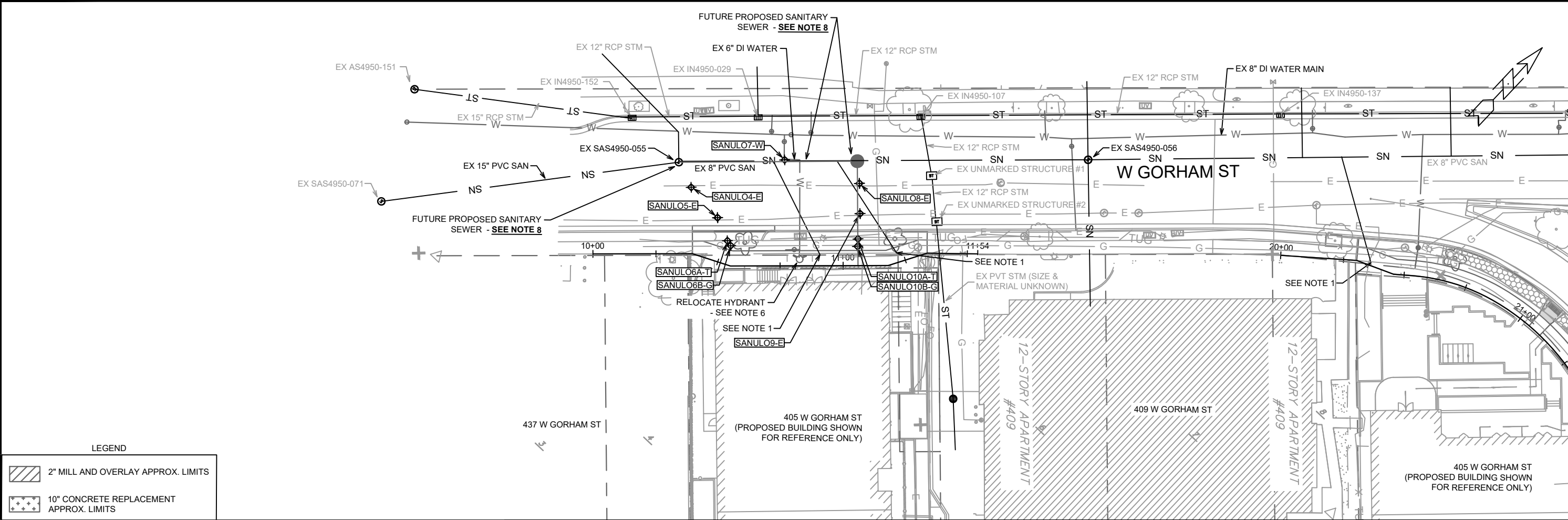


- ① POINT REFERRED TO ON PROFILE.
- ② 5" CONCRETE SIDEWALK.
- ③ 6" TOPSOIL, SEED AND MATTING.
- ④ FILL.
- ⑤ EXISTING CONCRETE CURB AND GUTTER TYPE 'A' TO REMAIN, REPLACE IN LOCATIONS IDENTIFIED IN P SHEETS.
- ⑥ EXISTING H.M.A. PAVEMENT TO REMAIN.
- ⑦ EXISTING CRUSHED AGGREGATE BASE COURSE TO REMAIN.
- ⑧ EXISTING 10" CONCRETE PAVEMENT TO REMAIN.
- ⑨ TIE BAR.

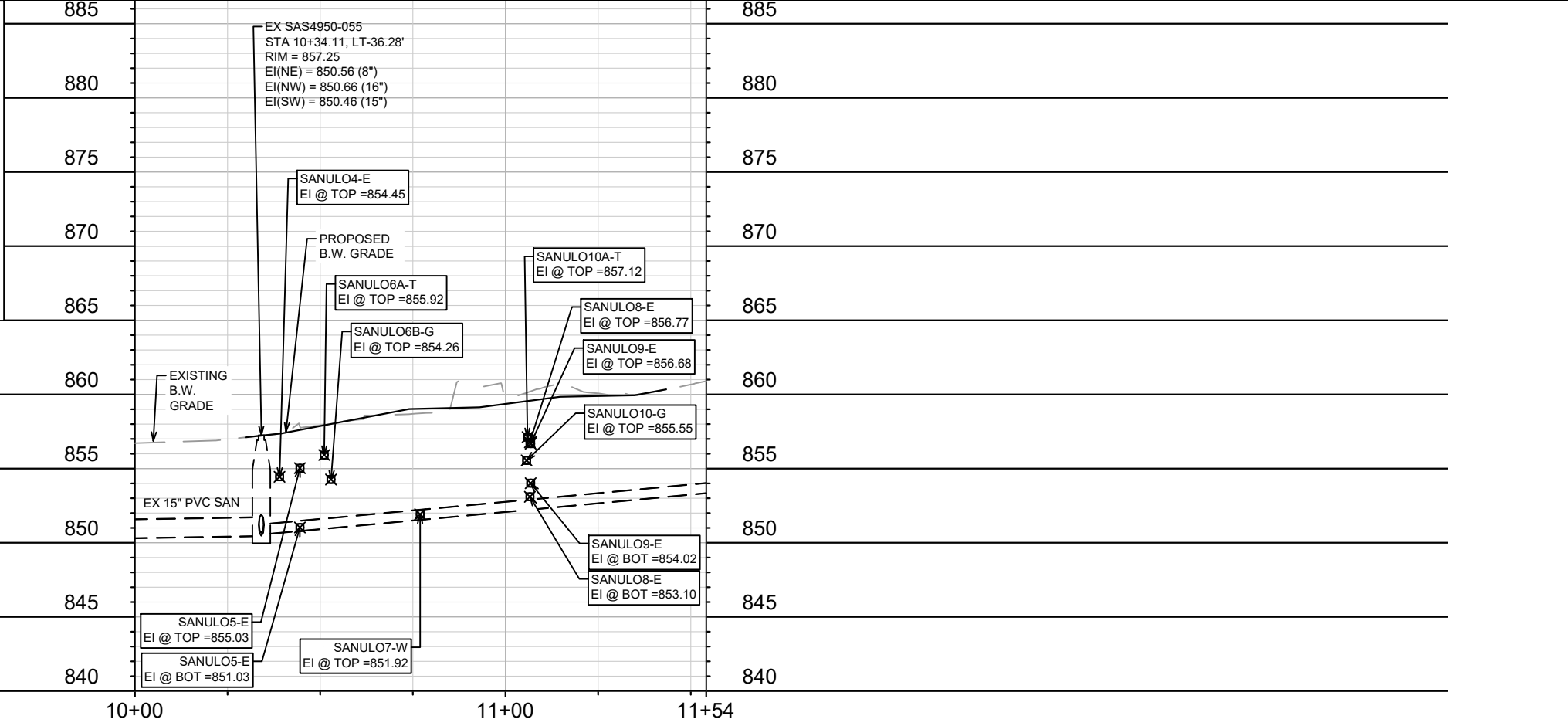






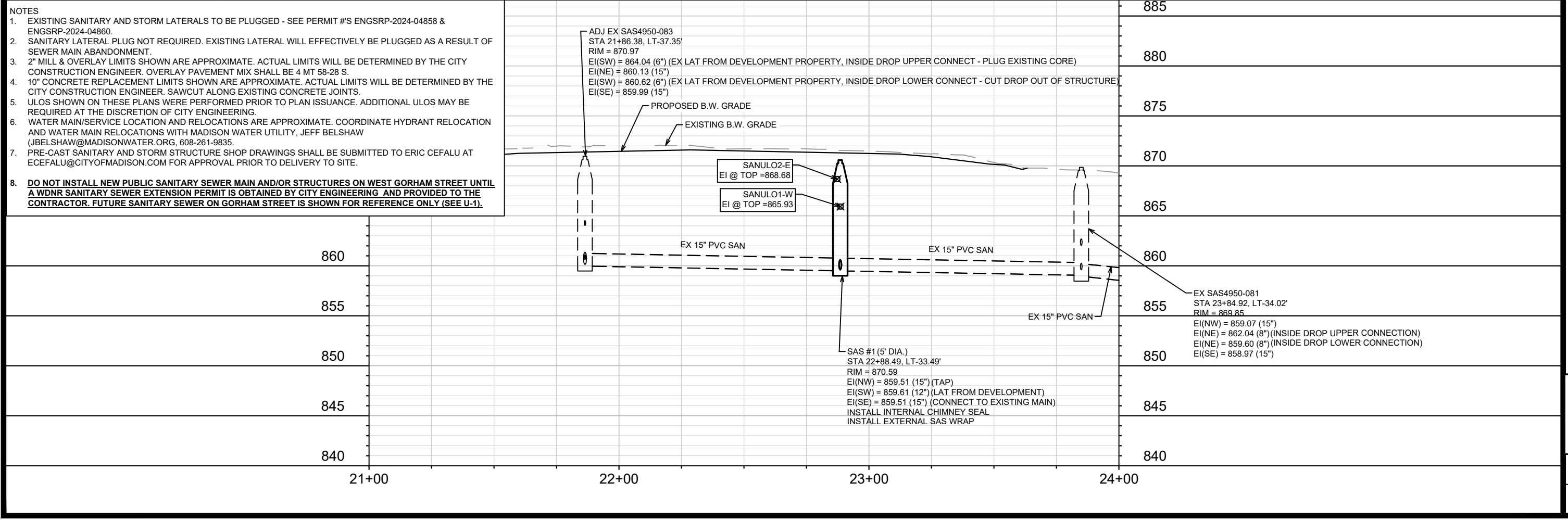



- NOTES
- EXISTING SANITARY AND STORM LATERALS TO BE PLUGGED - SEE PERMIT #'S ENGSRP-2024-04858 & ENGSRP-2024-04860.
 - SANITARY LATERAL PLUG NOT REQUIRED. EXISTING LATERAL WILL EFFECTIVELY BE PLUGGED AS A RESULT OF SEWER MAIN ABANDONMENT.
 - 2" MILL & OVERLAY LIMITS SHOWN ARE APPROXIMATE. ACTUAL LIMITS WILL BE DETERMINED BY THE CITY CONSTRUCTION ENGINEER. OVERLAY PAVEMENT MIX SHALL BE 4 MT 58-28 S.
 - 10" CONCRETE REPLACEMENT LIMITS SHOWN ARE APPROXIMATE. ACTUAL LIMITS WILL BE DETERMINED BY THE CITY CONSTRUCTION ENGINEER. SAWCUT ALONG EXISTING CONCRETE JOINTS.
 - ULOS SHOWN ON THESE PLANS WERE PERFORMED PRIOR TO PLAN ISSUANCE. ADDITIONAL ULOS MAY BE REQUIRED AT THE DISCRETION OF CITY ENGINEERING.
 - WATER MAIN/SERVICE LOCATION AND RELOCATIONS ARE APPROXIMATE. COORDINATE HYDRANT RELOCATION AND WATER MAIN RELOCATIONS WITH MADISON WATER UTILITY, JEFF BELSHAW (JBELSHAW@MADISONWATER.ORG, 608-261-9835).
 - PRE-CAST SANITARY AND STORM STRUCTURE SHOP DRAWINGS SHALL BE SUBMITTED TO ERIC CEFALU AT ECEFALU@CITYOFMADISON.COM FOR APPROVAL PRIOR TO DELIVERY TO SITE.
 - DO NOT INSTALL NEW PUBLIC SANITARY SEWER MAIN AND/OR STRUCTURES ON WEST GORHAM STREET UNTIL A WDNR SANITARY SEWER EXTENSION PERMIT IS OBTAINED BY CITY ENGINEERING AND PROVIDED TO THE CONTRACTOR. FUTURE SANITARY SEWER ON GORHAM STREET IS SHOWN FOR REFERENCE ONLY (SEE U-1).**



15351	MADISON, WI	9553	CONTRACT NO:
SEWER PLAN & PROFILE - W GORHAM STREET			
405 W GORHAM STREET			
M:\DESIGN\Projects\15351\CAD\Sewers\15351SWR-PipeNetwork.dwg			
CITY OF MADISON WISCONSIN			
15351			
U-1			

BY	DATE	REVISION	Scale: 1" = 40'
U-1	10/30/2025	15351	



	15351	
	U-2	
SEWER PLAN & PROFILE - N BROOM STREET		
		15351
405 W GORHAM STREET		
		MADISON, WI
CONTRACT NO: 9553		
M:\DESIGN\Projects\15351\CAD\Sewers\15351SWR-PipeNetwork.dwg		
MARK	REVISION	DATE BY
Designed By: JO	Date: 6/6/2025 10:30 AM	Scale: 1" = 40'
15351		U-2

SANITARY SEWER SCHEDULE

PROPOSED SANITARY STRUCTURES

SAS NO.	STATION	LOCATION (OFFSET)	TOP OF CASTING	E.I.	DEPTH	NOTES
NORTH BROOM STREET (BACK OF WALK)						
SAS #1	22+88.49	LT-33.49	870.59	859.51	11.08	5' DIA.; [1]; [2]; [3]; [4]

SANITARY STRUCTURE ADJUSTMENTS/MODIFICATIONS

STRUC ID NO.	STATION	LOCATION (OFFSET)	TOP OF CASTING	PROP TOC	ADJ (FT)	NOTES
NORTH BROOM STREET (BACK OF WALK)						
SAS4950-083	21+86.38	LT-37.35	870.97	-	-	[5]

SANITARY SEWER ULOS

ULO NO.	STATION	LOCATION (OFFSET)	TYPE	NOTES
NORTH BROOM STREET (BACK OF WALK)				
SANULO1-W	22+88.62	LT-25.17	8" DI WATER MAIN, TOP @ 865.93'	- NO CONFLICT EXPECTED
SANULO2-E	22+87.32	LT-14.78	ELECTRIC, TOP @ 868.68'	- NO CONFLICT EXPECTED
SANULO3-T	22+88.70	LT-10.39	<u>[6]; TELEPHONE / FIBER OPTIC</u>	
WEST GORHAM STREET (BACK OF WALK)				
SANULO4-E	10+39.02	LT-26.33	6" ELECTRIC, TOP @ 854.45'	
SANULO5-E	10+44.52	LT-16.55	ELECTRIC DUCT PACAKGE, TOP @ 855.03', BOT @ 851.03'	
SANULO6A-T	10+51.07	LT-9.17	TELEPHONE / FIBER OPTIC (3X), TOP @ 855.92'	
SANULO6B-G	10+52.90	LT-7.71	8" STEEL GAS, TOP @ 854.26'	
SANULO7-W	10+76.95	LT-42.00	6" DI WATER, TOP @ 851.92'	
SANULO8-E	11+06.59	LT-32.57	ELECTRIC DUCT PACAKGE, TOP @ 856.77', BOT @ 853.10'	
SANULO9-E	11+06.79	LT-20.61	ELECTRIC DUCT PACAKGE, TOP @ 856.68', BOT @ 854.02'	
SANULO10A-T	11+05.93	LT-10.57	TELEPHONE / FIBER OPTIC, TOP @ 857.12'	
SANULO10B-G	11+05.70	LT-7.64	8" STEEL (?) GAS, TOP @ 855.55'	

SPECIFIC NOTES

- [1] CONNECT STRUCTURE TO EXISTING 15" PVC SANITARY SEWER MAIN. TAP STRUCTURE ON THE UPSTREAM CONNECTION (EI(NW) = 859.51)
- [2] CONNECT 12" PVC SANITARY LATERAL FROM PROPOSED DEVELOPMENT (EI(SW) = 859.61)
- [3] INSTALL INTERNAL CHIMNEY SEAL IN CONFORMANCE WITH S.D.D. 5.7.17
- [4] INSTALL EXTERNAL SAS WRAP IN CONFORMANCE WITH SDD 5.7.2
- [5] CUT EXISTING SOUTHWEST INSIDE DROP CONNECTION OUT OF STRUCTURE AND PLUG EXISTING CORE
- [6] UTILITY NOT LOCATED DURING ULO FIELD INVESTIGATION, CONTRACTOR SHALL VERIFY UTILITY IS NOT IN CONFLICT WITH PROPOSED SEWER

SANITARY STRUCTURE REMOVALS & ABANDONMENTS

STRUC ID NO.	STATION	LOCATION (OFFSET)	TOP OF CASTING	E.I.	DEPTH	NOTES
WEST JOHNSON STREET (BACK OF WALK)						
SAS4950-020	31+33.28	RT-37.26	859.00	850.85	8.15	ABN. 4' DIA.
SAS4950-029	33+09.56	RT-36.01	867.83	860.11	7.72	ABN. 4' DIA.

SANITARY PIPE REMOVALS & ABANDONMENTS

REMOVE FROM	REMOVE TO	LGTH (FT)	PAID (Y/N)	REM LGTH (FT)	REM LGTH PAID (FT)	ABN LGTH (FT)	SLURRY CY	PIPE SIZE	PIPE TYPE	NOTES
WEST JOHNSON STREET (BACK OF WALK)										
SAS4950-068	SAS4950-020	53	Y	-	-	53	0.69	8"	PVC	
SAS4950-020	SAS4950-029	176	Y	-	-	176	2.28	8"	PVC	

STORM SEWER SCHEDULE

PROPOSED STORM STRUCTURES

STRUC. NO.	STATION	LOCATION (OFFSET)	TYPE	TOP OF CASTING	E.I.	DEPTH	NOTES
WEST JOHNSON STREET (BACK OF WALK)							
S-1	30+43.86	RT-49.36	3'X3' STORM SAS	856.25	852.38	3.87	FP; W/R-1550-0054; [1]
S-2	30+43.73	RT-14.56	H-INLET	856.48	853.07	3.41	W/R-3067-7004-V; [2]

PROPOSED STORM PIPES

PIPE NO.	FROM (DNSTM)	TO (UPSTM)	DISCH. E.I.	INLET E.I.	PLAN (PAY) LGTH (FT)	PIPE LGTH (FT)	SLOPE (%)	PIPE SIZE	TYPE	NOTES
WEST JOHNSON STREET (BACK OF WALK)										
P-1	S-1	S-2	852.71	853.07	35	32	1.13%	15"	RCP	[10]

STORM PIPE REMOVALS & ABANDONMENTS

PIPE REMOVAL NO.	REMOVE FROM	REMOVE TO	LGTH (FT)	PAID (Y/N)	REM LGTH PAID (FT)	ABN LGTH (FT)	SLURRY (CY)	PIPE SIZE	PIPE TYPE	NOTES
WEST JOHNSON STREET (BACK OF WALK)										
ABN-1	EX STM SEWER MAIN	EX PRIVATE INLET #1	52	Y	-	52	-	6"	[7]	APRX. 2 PLUGS
ABN-2	EX STM SEWER MAIN	EX PRIVATE INLET #2	52	Y	-	52	-	6"	[7]	APRX. 2 PLUGS
ABN-3	EX STM SCUPPER	EX RETAINING WALL DRAIN	20	Y	-	20	-	[7]	[7]	APRX. 2 PLUGS
ABN-4	EX STM SCUPPER	EX ROOF DRAIN	10	Y	-	10	-	[7]	[7]	APRX. 2 PLUGS

STORM STRUCTURE ADJUSTMENTS

STRUC. NO.	ID NO.	STATION	LOCATION (OFFSET)	EX TOC	PROP TOC	ADJ (FT)	NOTES
WEST JOHNSON STREET (BACK OF WALK)							
ADJ-1	IN4950-082	31+12.89	RT-14.55	858.42	-	-	[5]; [6]

STORM SEWER ULOs

ULO NO.	STATION	LOCATION (OFFSET)	TYPE	NOTES
WEST JOHNSON STREET (BACK OF WALK)				
ULO1A-G	30+50.44	RT-46.91	GAS, TOP @ 850.88' - NO CONFLICT EXPECTED, ALSO NOT IN ALIGNMENT OF NEW STORM 12" SAND CAST WATER MAIN, TOP @ 850.39' - NO CONFLICT EXPECTED [8]: GAS ELECTRIC DUCT PACKAGE, TOP @ 851.62', BOT @ 848.62' - NO CONFLICT EXPECTED GAS, TOP @ 853.18' - NO CONFLICT EXPECTED TELEPHONE, TOP @ 853.63' - NO CONFLICT EXPECTED	
ULO1B-W	30+44.44	RT-46.19		
ULO2A-G	30+41.67	RT-14.92		
ULO2B-E	30+44.50	RT-14.98		
ULO3-G	30+43.78	RT-6.26	[9]; ELECTRIC, TOP @ 856.98' - **POSSIBLE CONFLICT - SEE NOTE 9** [9]; 6" TELEPHONE (2X), TOP @ 855.59' - **POSSIBLE CONFLICT BUT PVT STM SHOULD BE ABOVE UTILITY - SEE NOTE 9** [9]; GAS, TOP @ 855.64' - **POSSIBLE CONFLICT BUT PVT STM SHOULD BE ABOVE UTILITY - SEE NOTE 9**	
ULO4-T	30+43.20	RT-3.01		
ULO5A-E	31+12.68	RT-9.29	ELECTRIC, TOP @ 868.47' TELEPHONE DUCT PACKAGE, TOP @ 868.65', BOT @ 865.65' GAS, TOP @ 868.35' 24" RCP STM(?), TOP @ 865.90' 12" SAND CAST WATER MAIN, TOP @ 864.02'	
ULO5B-T	31+13.19	RT-6.84		
ULO5C-G	31+13.45	RT-6.08		
ULO6A-E	33+68.59	RT-10.75		
ULO6B-T	33+68.68	RT-8.38		
ULO7-G	33+68.47	RT-6.04		
ULO8A-STM	33+67.61	RT-48.66		
ULO8B-W	33+67.92	RT-45.82		

SPECIFIC NOTES

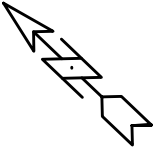
- [1] CONNECT STRUCTURE TO EXISTING 19"X30" HERCP STORM SEWER MAIN
- [2] CONNECT 15" PVC PRIVATE STORM FROM PROPOSED DEVELOPMENT (EI(NW) = 853.82)
- [5] STORM TAP, CONNECT 12" PVC PRIVATE STORM FROM PROPOSED DEVELOPMENT (EI(NW) = 855.62)
- [6] REPLACE EXISTING CASTING WITH DRIVEWAY CASTING (W/R 3290-A), FLIP CASTING TO FIT IN TYPE "X" CURB
- [7] SIZE AND/OR MATERIAL UNKNOWN - DETERMINE IN FIELD
- [8] UTILITY NOT LOCATED DURING ULO FIELD INVESTIGATION, CONTRACTOR SHALL VERIFY UTILITY IS NOT IN CONFLICT WITH PROPOSED SEWER
- [9] IF CONFLICT WITH PRIVATE UTILITY IS ENCOUNTERED, THE CONTRACTOR SHALL COORDINATE WITH PRIVATE UTILITIES TO RELOCATE AND/OR ADJUST AS NEEDED
- [10] INSTALL STYROFOAM INSULATION AT WATER CROSSING

STANDARD NOTES:

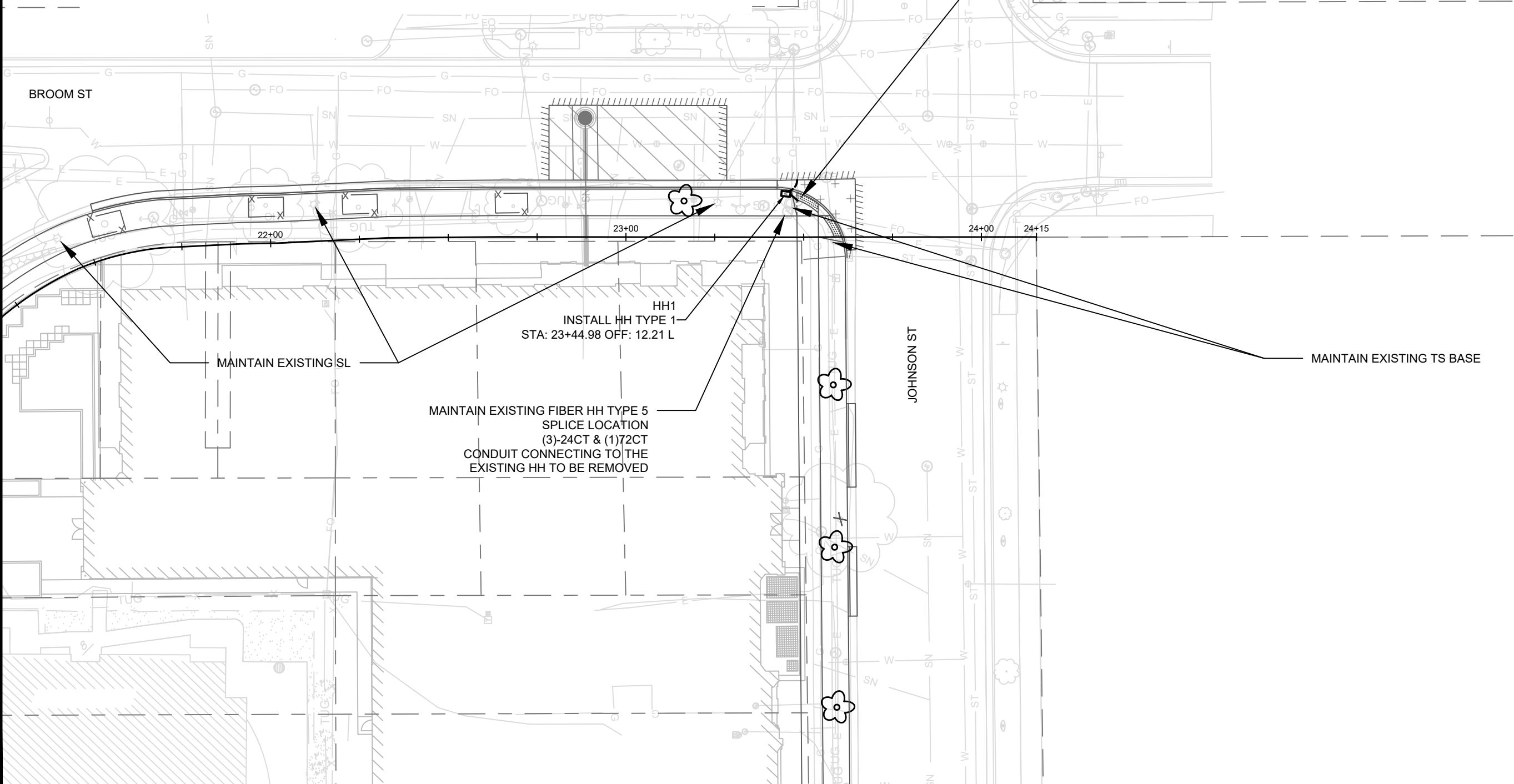
- ABBREVIATIONS: AE = APRON ENDWALL; RCP = REINFORCED CONCRETE PIPE; HERCP = HORIZONTAL ELLIPTICAL REINFORCED CONCRETE PIPE; DNA = DOES NOT APPLY; SAS = SEWER ACCESS STRUCTURE; LP = LOW POINT INLET STRUCTURE; FP = FIELD POURED STRUCTURE; TR = TOP OF CONCRETE ROOF; NCM = NO CROWN MATCH FOR PIPES; UD = UNDERDRAIN
- PLAN LENGTH (PAY LENGTH) IS FROM CENTER OF STRUCTURE TO CENTER OF STRUCTURE. PIPE LENGTH IS ACTUAL LENGTH OF PIPE FROM STRUCTURE WALL TO STRUCTURE WALL. SLOPE CALCULATED USING PIPE LENGTH.
- TOP OF CASTING GRADE GIVEN IS THE TOP OF CURB FOR INLET STRUCTURES AND THE FLOWLINE OF THE CLOSED CASTING FOR SAS UNLESS NOTED OTHERWISE.
- APPROXIMATE DISCHARGE E.I. GIVEN, ADJUST E.I. AND PIPE SLOPE IN THE FIELD.
- ALL REINFORCED CONCRETE PIPES TO BE CLASS 3 UNLESS OTHERWISE NOTED.
- ALL FIELD POURED SAS STORM STRUCTURES SHALL BE CONSTRUCTED IN ACCORDANCE WITH STANDARD DETAIL DRAWING 5.7.3. ALL PRECAST SAS STORM STRUCTURES SHALL BE CONSTRUCTED IN ACCORDANCE WITH STANDARD DETAIL DRAWING 5.7.5.
- ALL STRUCTURES CALLED OUT AS FIELD POURED SHALL BE FIELD POURED. ALL OTHER STRUCTURES STORM AND SANITARY (NOT INDICATED AS FIELD POURED) SHALL BE SUBMITTED TO CITY ENGINEERING FOR APPROVAL ECEFALU@CITYOFMADISON.COM ((608) 243-5894).
- ALL REBAR FOR FIELD POURED STRUCTURES SHALL BE EPOXY COATED. ANY EXPOSED STEEL SHALL BE TOUCHED UP OR RECOATED PRIOR TO USE.
- SURVEYOR TO CONFIRM THAT ALL INLET STATION / OFFSETS LINE UP WITH PROPOSED CURB AND GUTTER.

GENERAL ELECTRICAL NOTES

1. ALL LOCATIONS ARE APPROXIMATE, THE TRAFFIC ENGINEER SHALL APPROVE FINAL LOCATIONS, INCLUDING SETBACK IN THE FIELD, AFTER CONTRACTOR SURVEYS STAKING. THE CONTRACTOR SHALL NOTIFY GRETCHEN AVILES PINEIRO (GAVILESPINEIRO@CITYOFMADISON.COM), AT LEAST 24HOURS IN ADVANCE OF NEEDING BASE LOCATIONS MARKED.
2. BASES INSTALLED IN TERRACE SHALL BE 4' FROM FACE OF CURB UNLESS OTHERWISE NOTED, SUBJECT TO NOTE 1 ABOVE.
3. THE CONTRACTOR SHALL DO ALL WORK IN ACCORDANCE WITH "CITY OF MADISON STANDARD SPECIFICATIONS FOR PUBLIC WORKS CONSTRUCTION, LATEST EDITION" AND ADDENDUMS THERETO. cityofmadison.com/business/pw/specs.cfm
4. THE CONTRACTOR SHALL CALL TE SHOP (266-4767) AT THE TRAFFIC ENGINEERING SHOP AT LEAST 24-HOURS IN ADVANCE OF BURYING CONDUIT TO ARRANGE FOR INSPECTION. ANY WORK COMPLETED WITHOUT INSPECTION IS SUBJECT TO REJECTION.
5. THE CONTRACTOR SHALL WORK WITH CITY IT & TE ON MAINTAINING & RELOCATING FIBER COMMUNICATIONS. IF TEMPORARY FIBER IS NEEDED, THE CONTRACTOR WILL PROVIDE TEMPORARY WOOD POLES, TEMPORARY FIBER CABLES AND WILL PERFORM SPLICING DURING MAINTENANCE WINDOW APPROVED BY CITY IT. CONTRACTOR SHALL INSTALL ALL PERMANENT CONDUIT, FIBER CABLE AND PERFORM SPLICING DURING MAINTENANCE WINDOW APPROVED BY CITY IT.



REMOVE EXISTING HH
COORDINATE WITH CITY TE SHOP 266-4767
TO MATCH & EXTEND CONDUITS FROM THE EXISTING HH TO THE NEW
HH1 (FIELD VERIFY CONDUIT SIZE)
TRAFFIC SIGNAL OUTAGES TO CONNECT OLD CONDUIT TO NEW HH
ONLY PERMITTED DURING OFF PEAK HOURS (9AM-3PM) AND WITH
ADVANCE (24 HOURS) KNOWLEDGE AND PRESENCE OF CITY TE STAFF



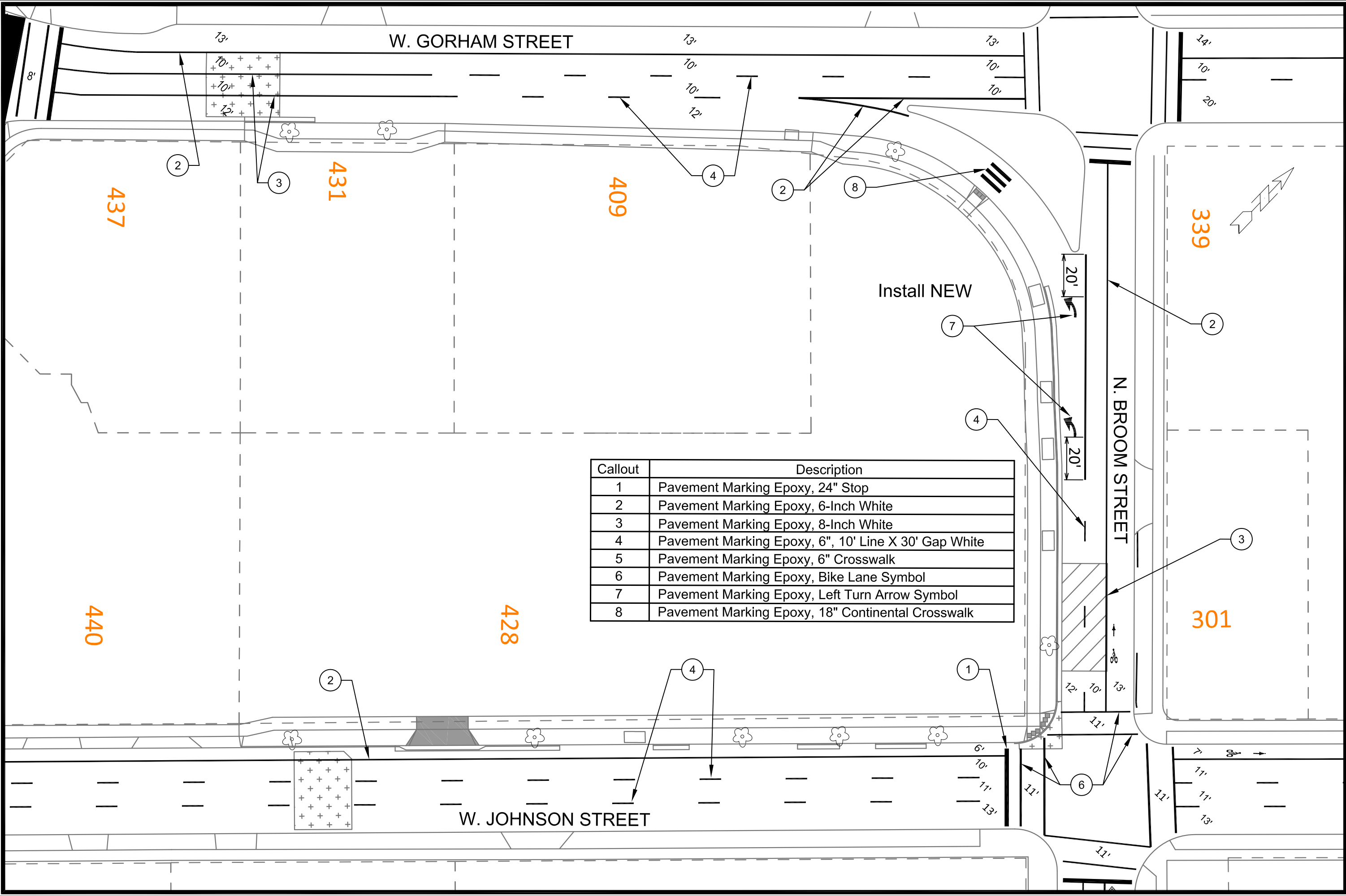
REVISION	DATE	BY
15351	4/30/2025 11:44 AM	15351
MARK	DATE	BY
15351	4/30/2025 11:44 AM	15351

15351
MADISON, WI
CONTRACT NO: 9553

ELECTRICAL PLAN
405 W GORHAM STREET
M:\DESIGN\Projects\15351\CAD\Traffic\15351TE-Electrical.dwg




15351
E-1



Callout	Description
1	Pavement Marking Epoxy, 24" Stop
2	Pavement Marking Epoxy, 6-Inch White
3	Pavement Marking Epoxy, 8-Inch White
4	Pavement Marking Epoxy, 6", 10' Line X 30' Gap White
5	Pavement Marking Epoxy, 6" Crosswalk
6	Pavement Marking Epoxy, Bike Lane Symbol
7	Pavement Marking Epoxy, Left Turn Arrow Symbol
8	Pavement Marking Epoxy, 18" Continental Crosswalk

PAVEMENT MARKING PLAN

405 W. GORHAM STREET



15351

PM-1

15351

MADISON, WI

CONTRACT NO: ---

MARK

REVISION

DATE

BY

Designed By: SDM

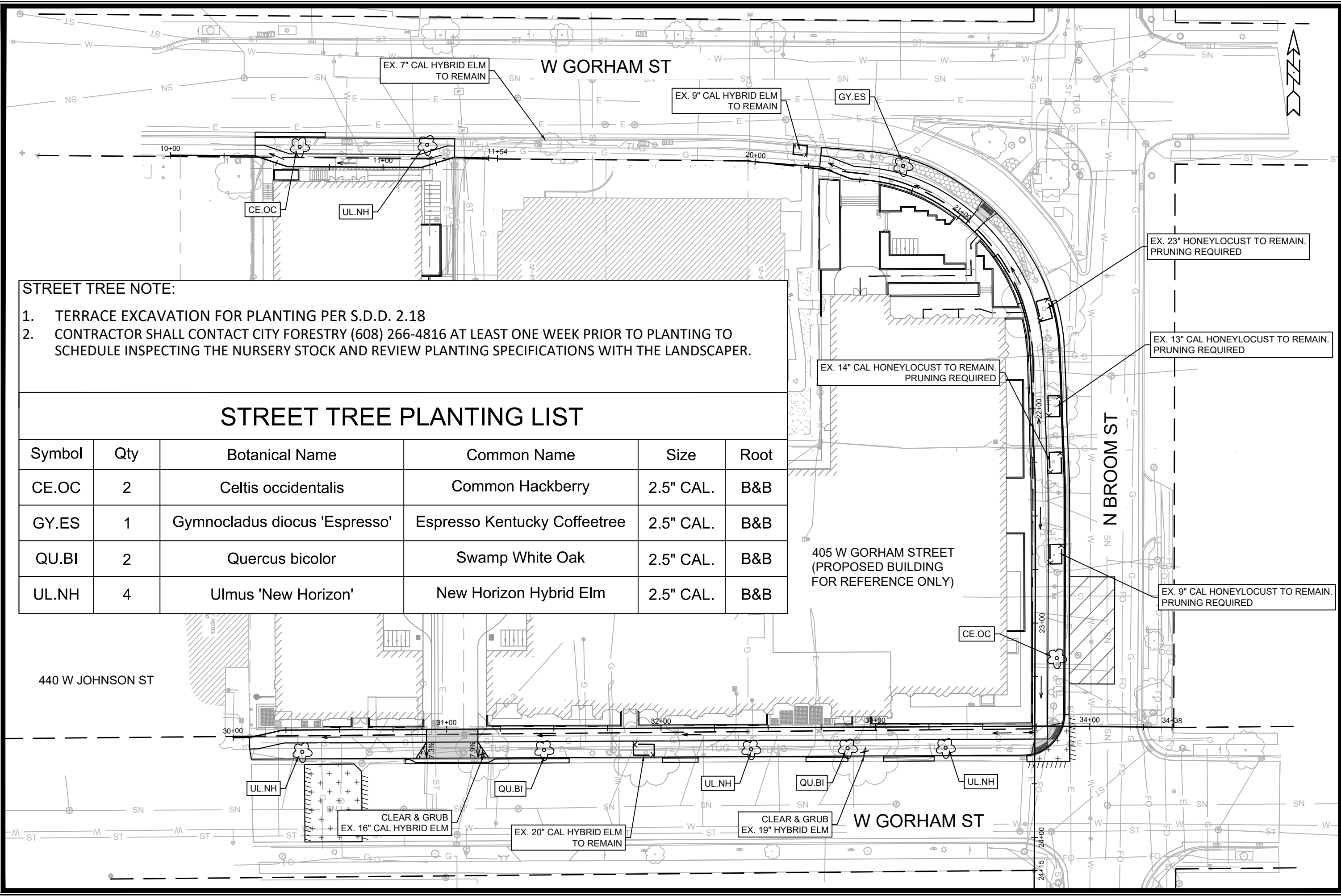
Date: 2/18/2025 2:18 PM

Scale: 1" = 40'

15351

PM-1

M:\DESIGN\Projects\15351\CAD\Traffic\15351\TE-PavementMarking.dwg



- STREET TREE NOTE:
- 1. TERRACE EXCAVATION FOR PLANTING PER S.D.D. 2.18
 - 2. CONTRACTOR SHALL CONTACT CITY FORESTRY (608) 266-4816 AT LEAST ONE WEEK PRIOR TO PLANTING TO SCHEDULE INSPECTING THE NURSERY STOCK AND REVIEW PLANTING SPECIFICATIONS WITH THE LANDSCAPER.

STREET TREE PLANTING LIST

Symbol	Qty	Botanical Name	Common Name	Size	Root
CE.OC	2	Celtis occidentalis	Common Hackberry	2.5" CAL.	B&B
GY.ES	1	Gymnocladus dioicus 'Espresso'	Espresso Kentucky Coffeetree	2.5" CAL.	B&B
QU.BI	2	Quercus bicolor	Swamp White Oak	2.5" CAL.	B&B
UL.NH	4	Ulmus 'New Horizon'	New Horizon Hybrid Elm	2.5" CAL.	B&B

15351

MADISON, WI

CONTRACT NO: 9553

LANDSCAPING PLAN

405 W GORHAM STREET

M:\DESIGN\Projects\15351\CAD\Streets\15351\EN-PnP.dwg

15351

L-1

BY

DATE

REVISION

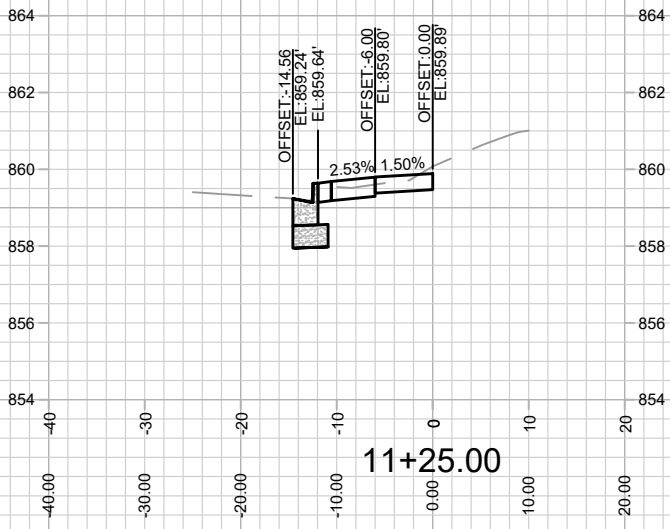
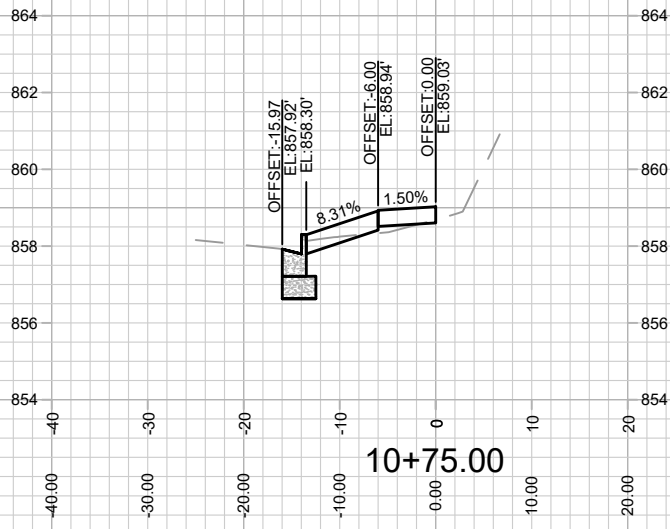
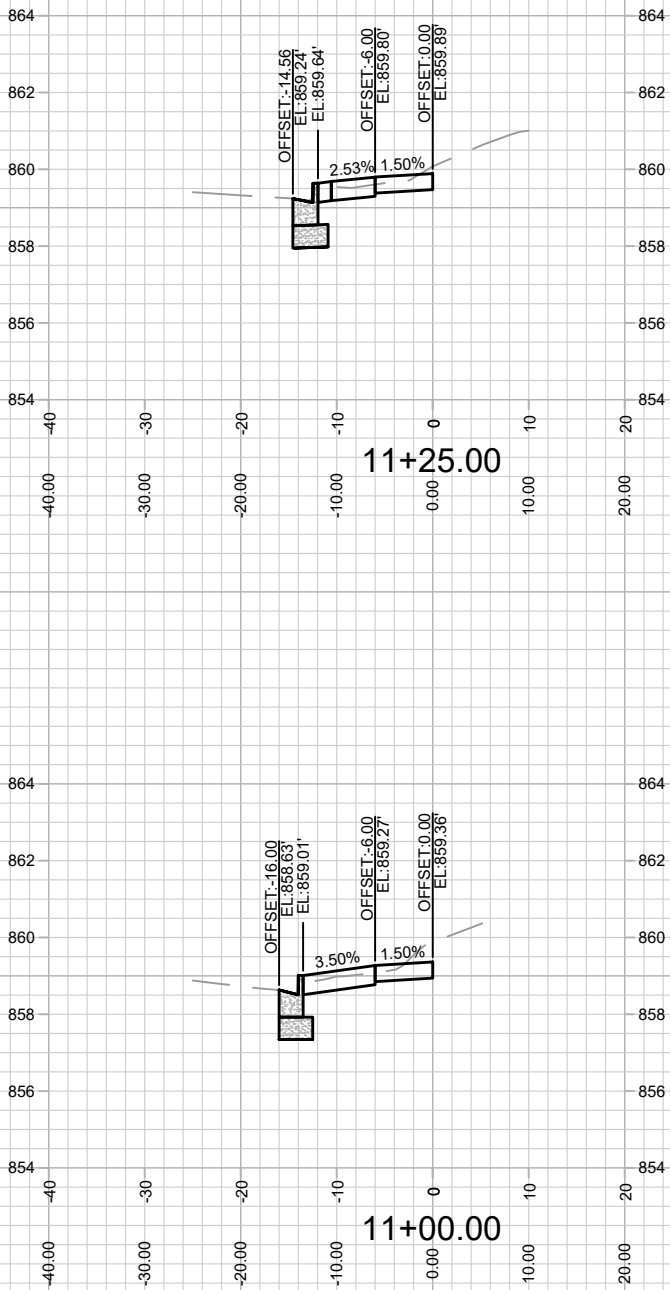
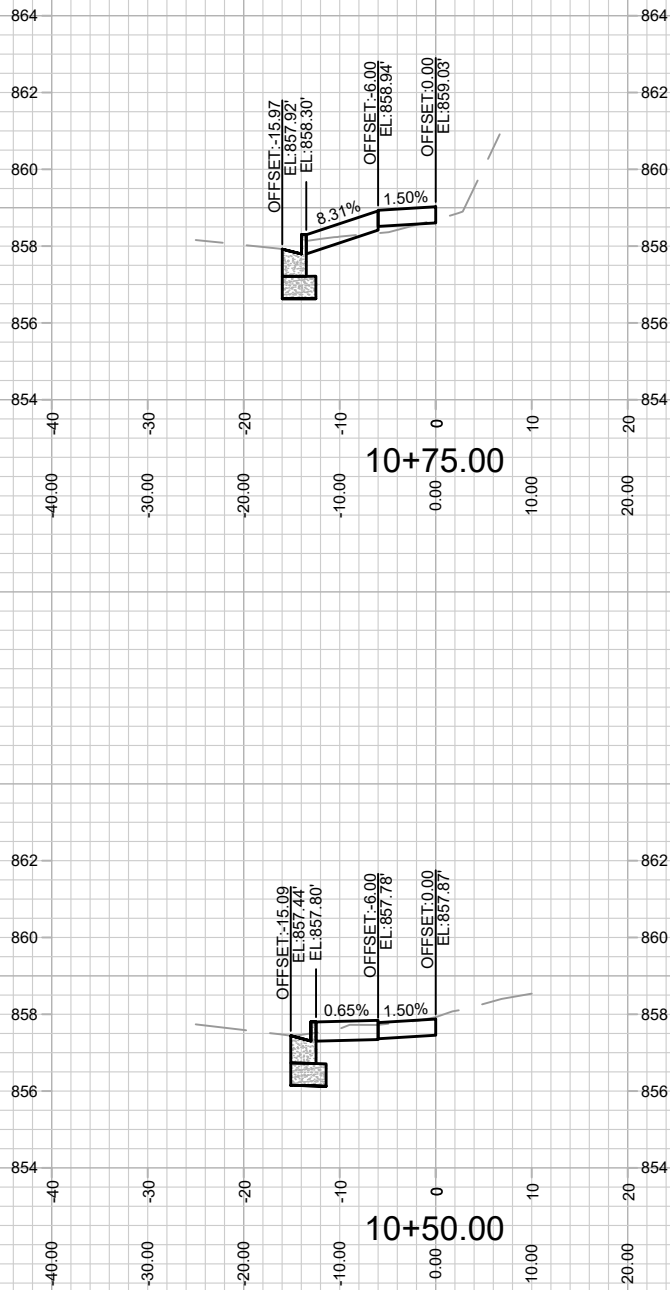
MARK

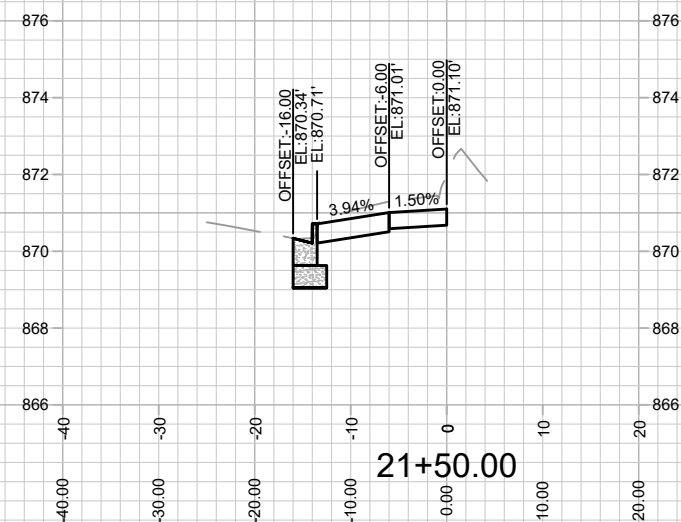
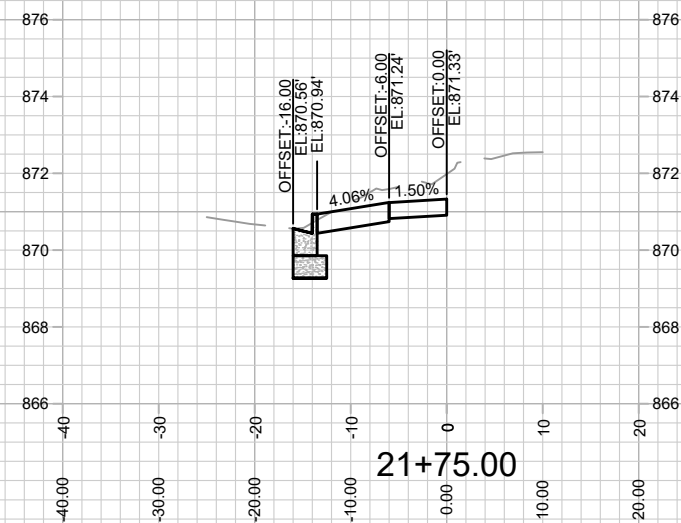
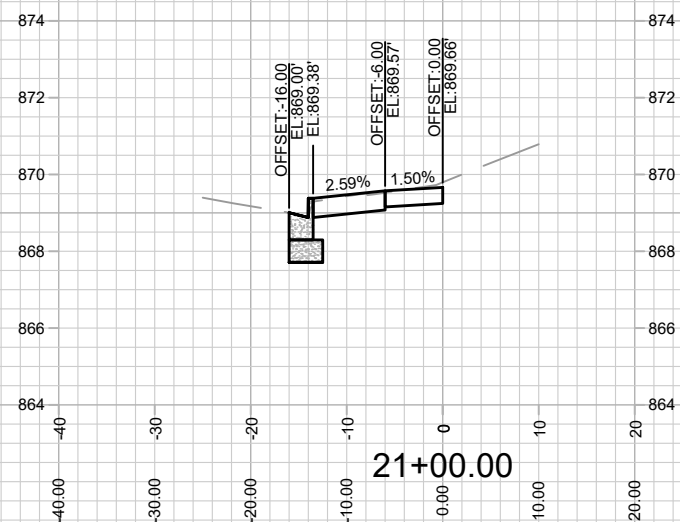
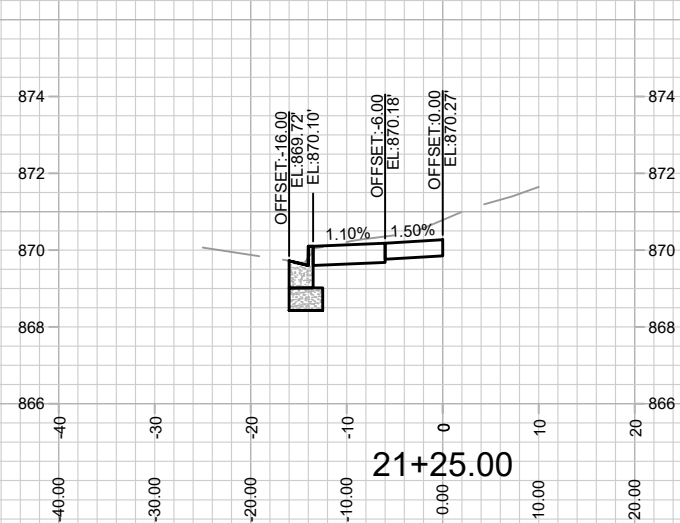
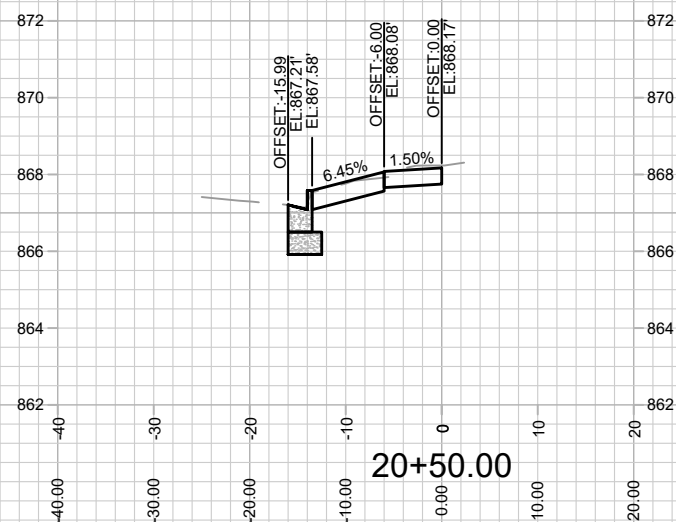
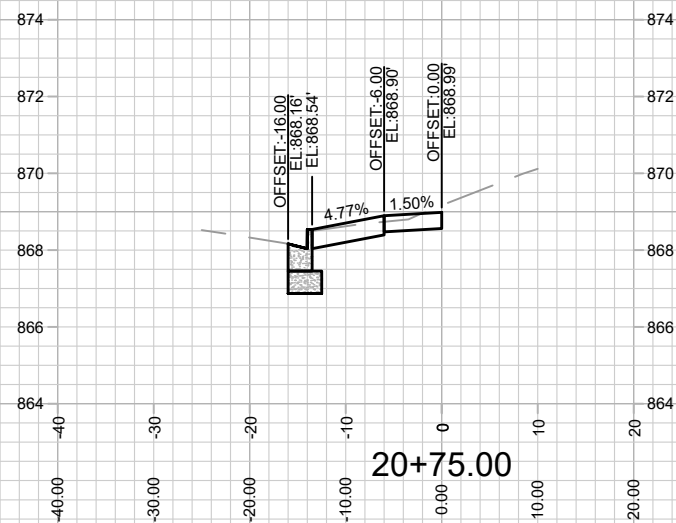
Desiged By: ID

Date: 5/29/2025 12:50 PM

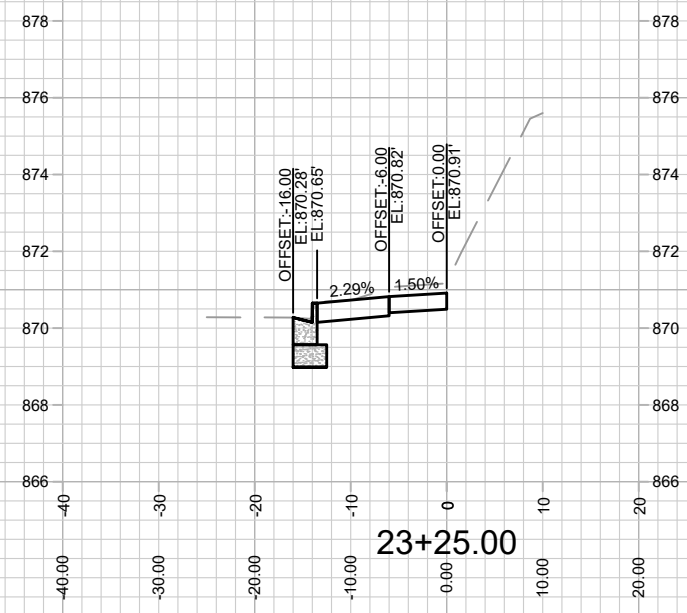
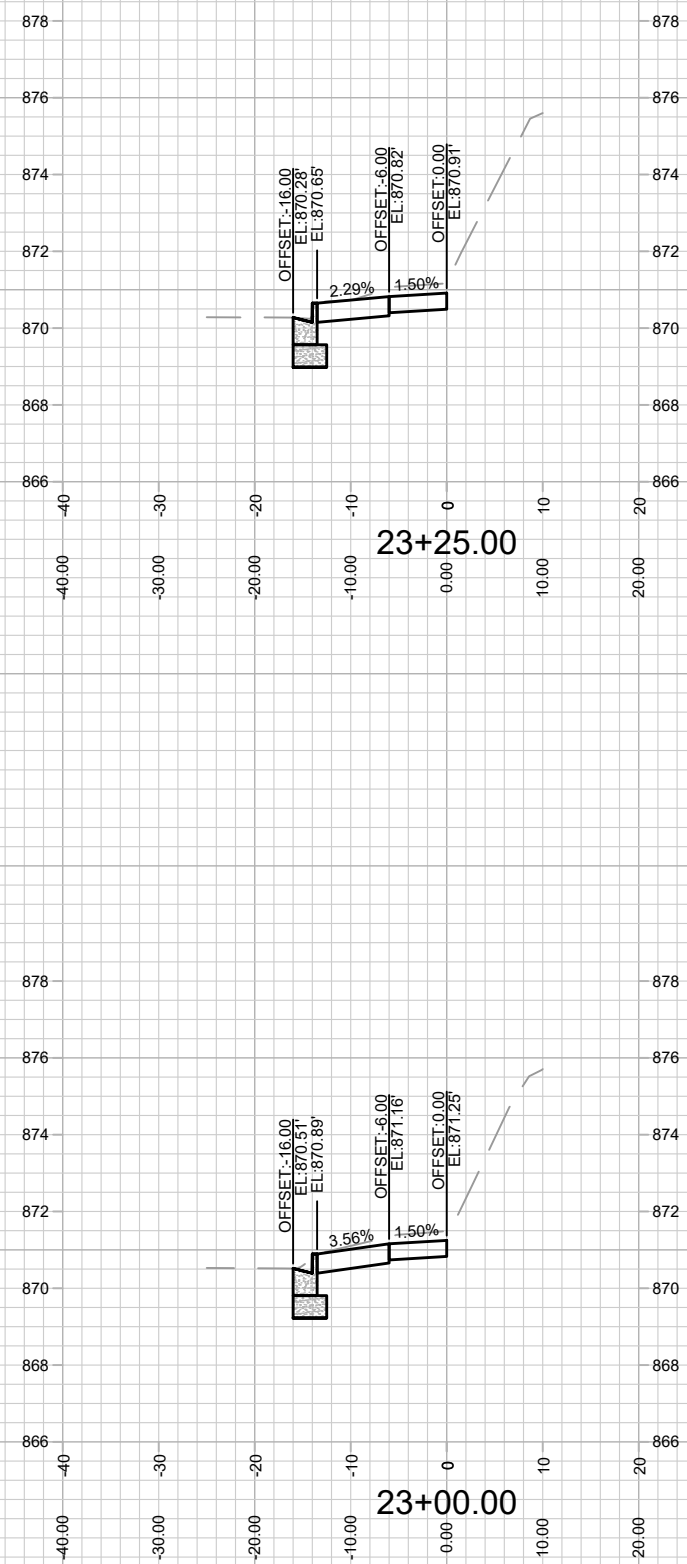
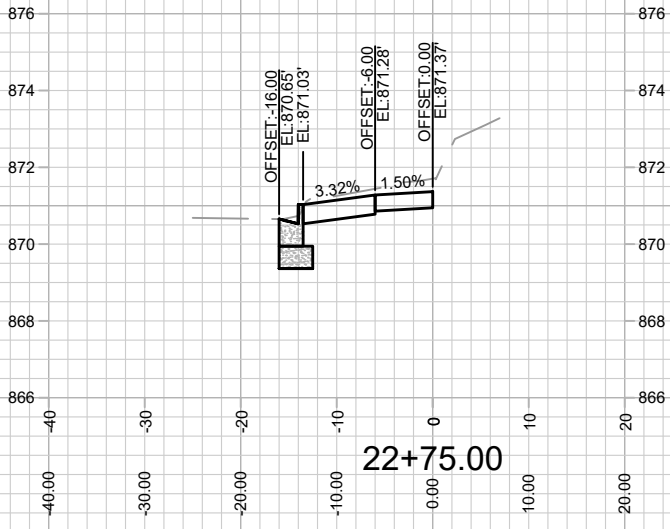
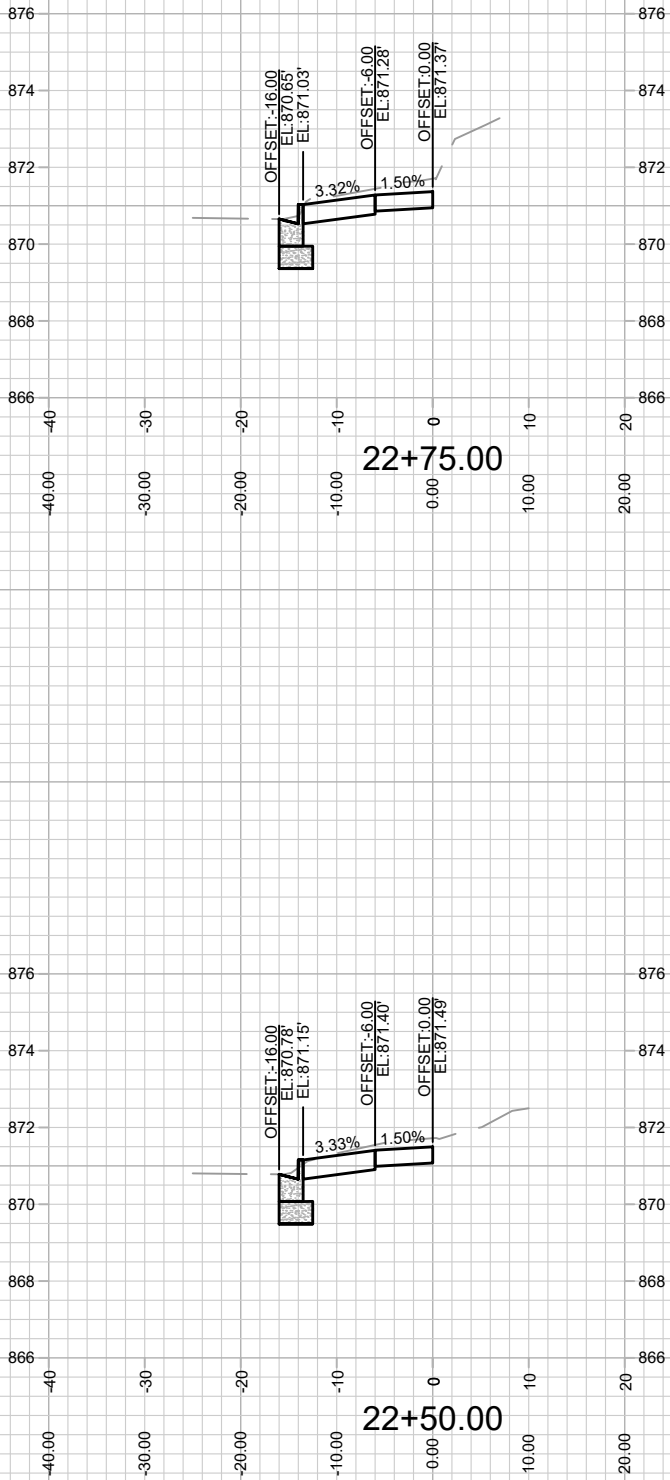
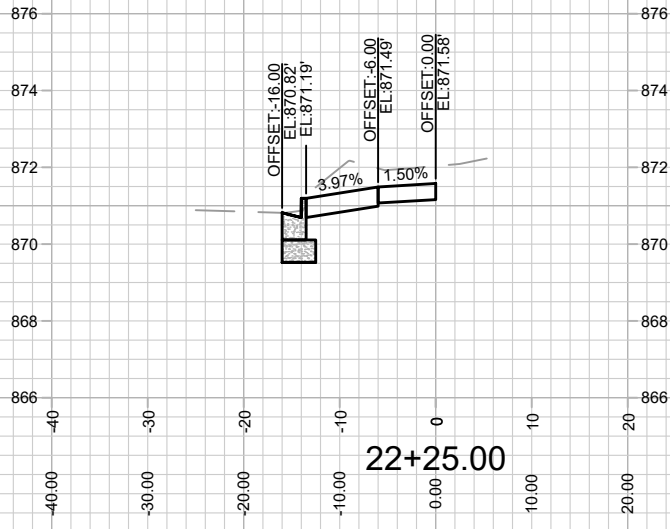
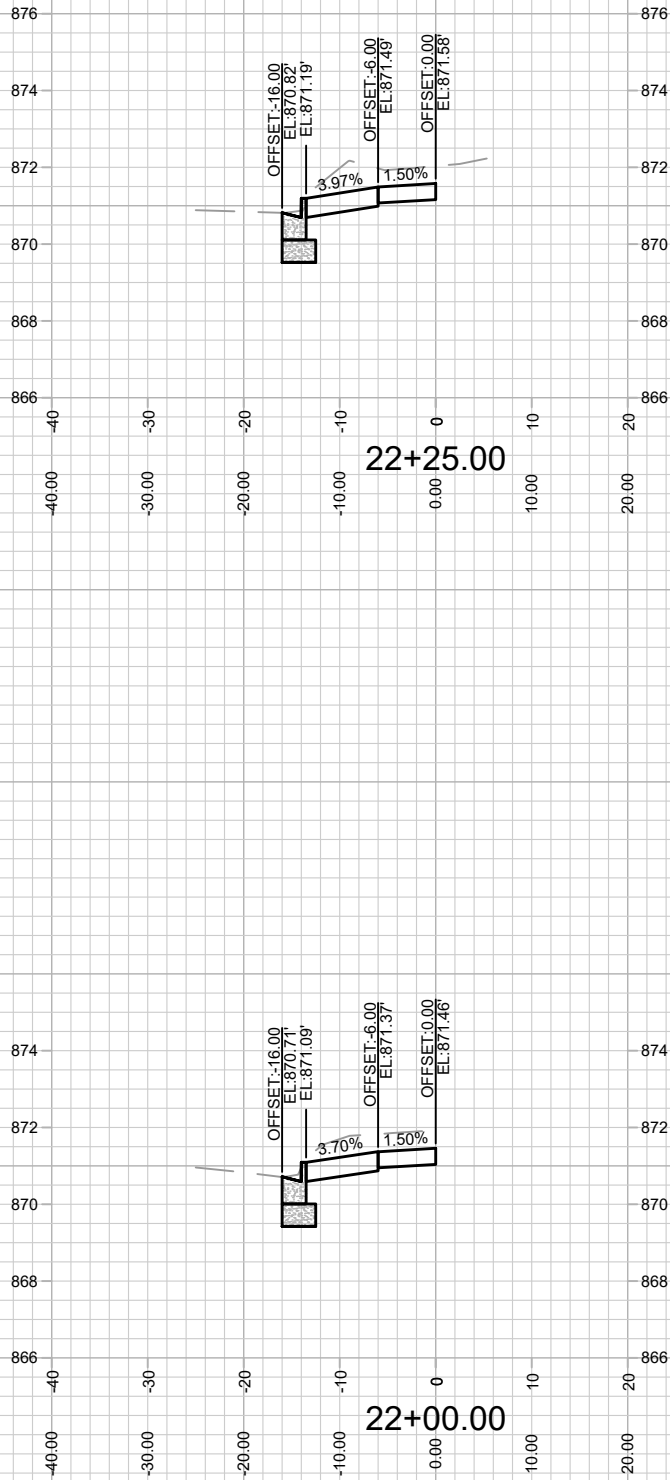
Scale: 1" = 40'

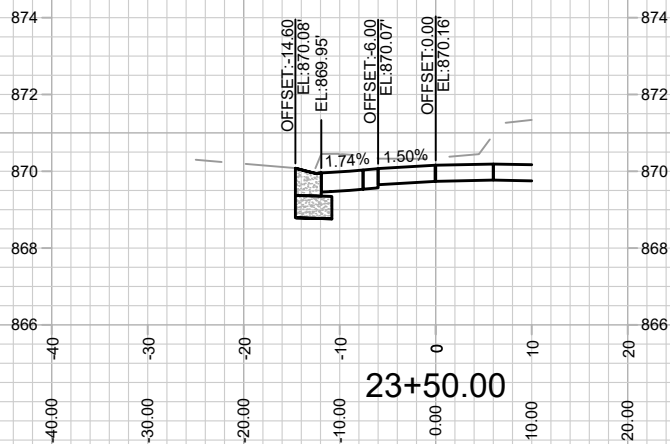
L-1





MARK	REVISION	DATE	BY
Designed By: IO		Date: 5/29/2025 9:46 AM	Scale: 1" = 20'
15351			X-2





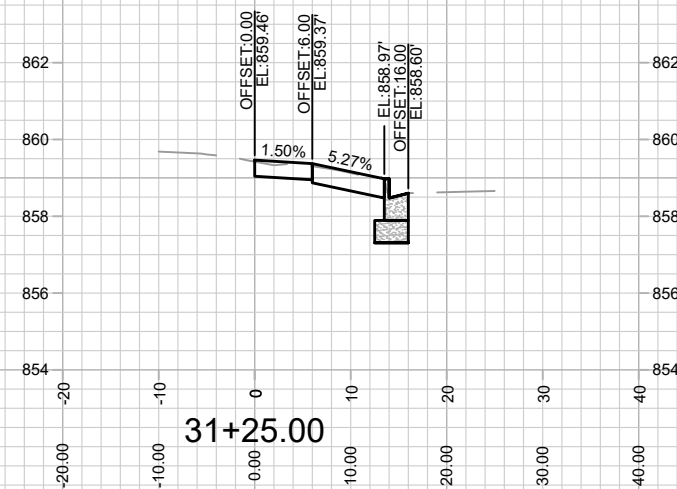
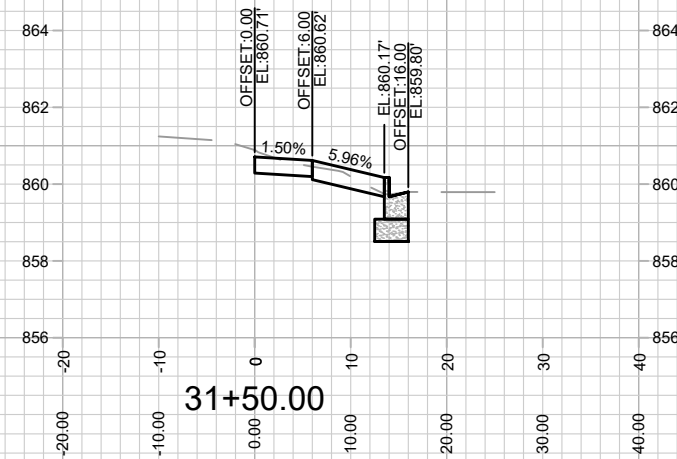
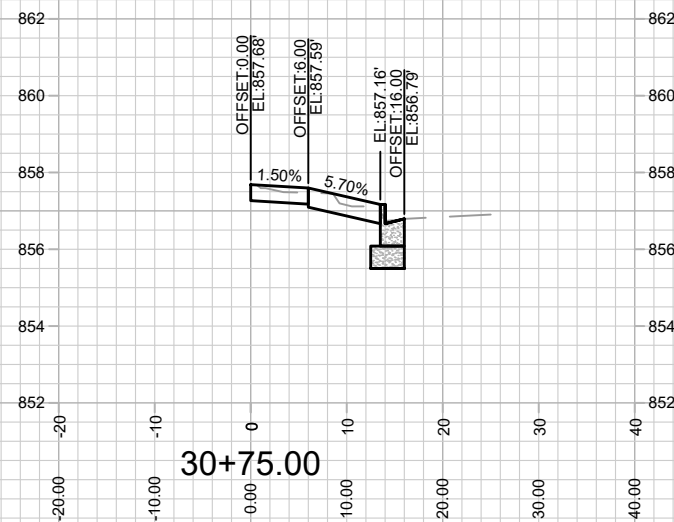
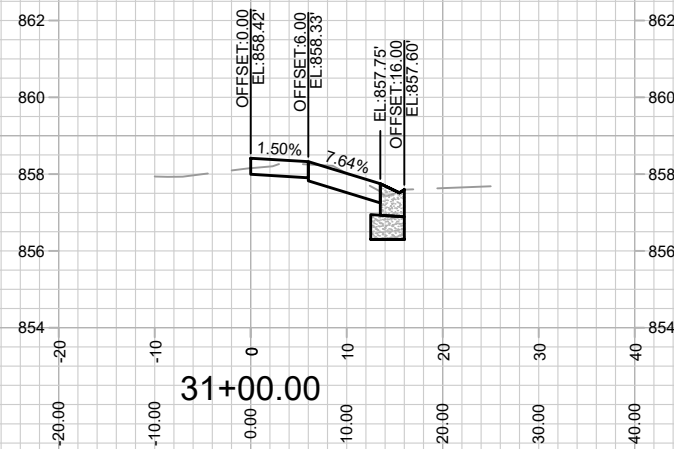
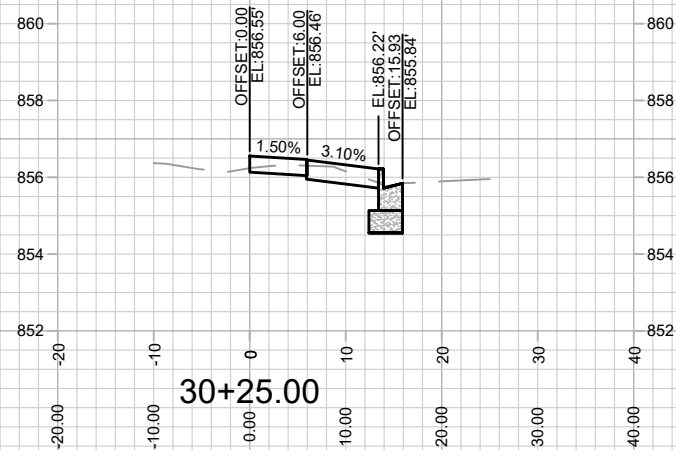
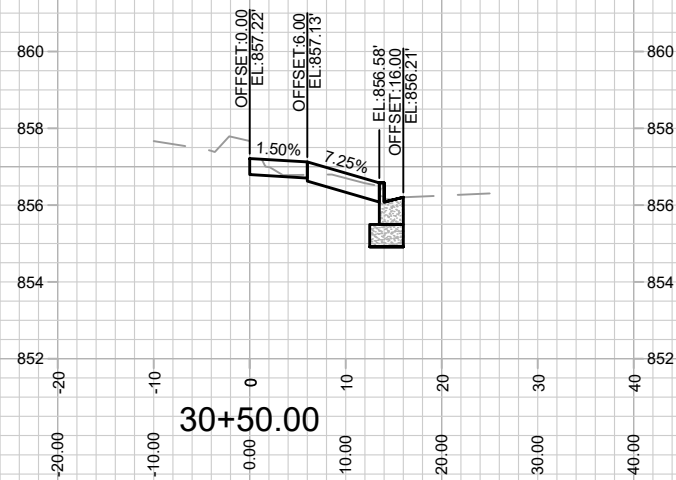
15351
X-4

CROSS SECTIONS - N BROOM STREET
405 W GORHAM STREET
M:\DESIGN\Projects\15351\CAD\Streets\15351\EN-AI\Prof&Corridor_Setup.dwg

CONTRACT NO: 9553

15351
MADISON, WI

MARK	REVISION	DATE	BY
15351	Date: 5/29/2025 9:46 AM	Scale: 1" = 20'	X-4



15351

X-5

CROSS SECTION - W JOHNSON STREET

405 W GORHAM STREET

M:\DESIGN\Projects\15351\CAD\Streets\15351EN-AltProt&Corridor_Setup.dwg

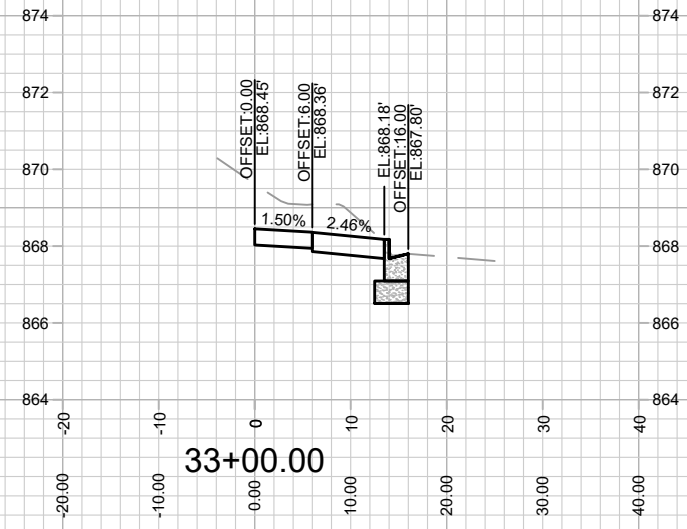
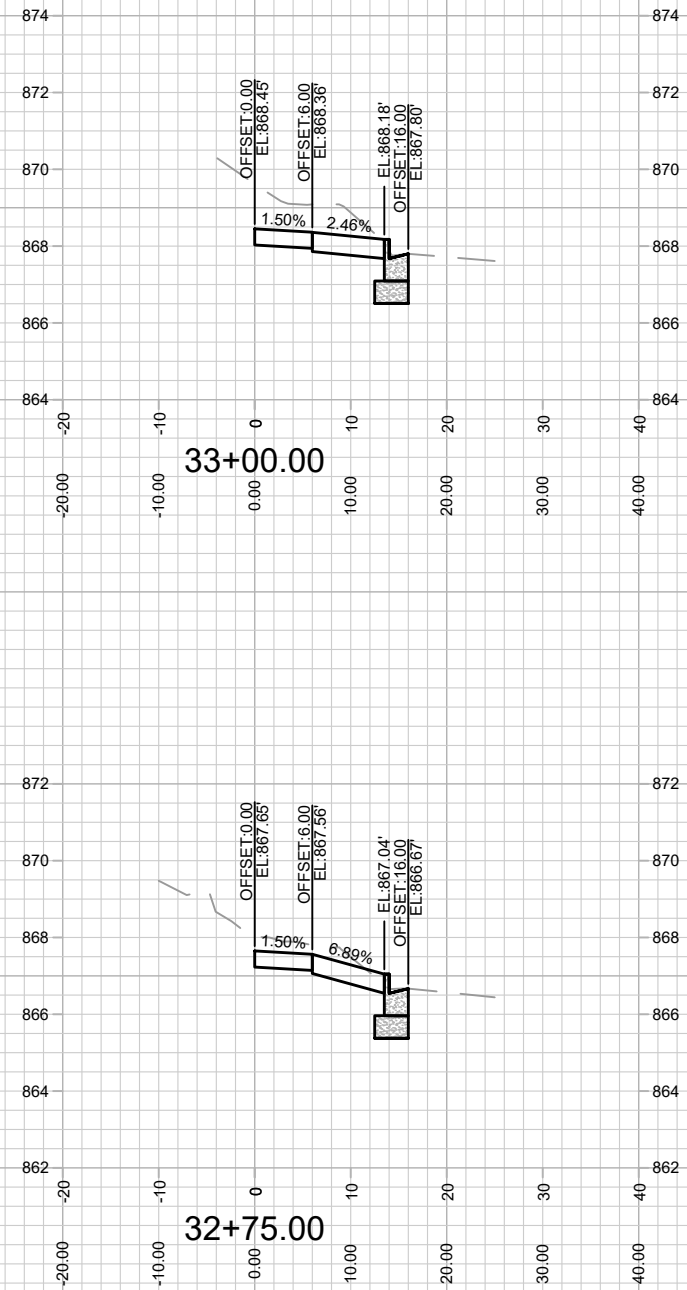
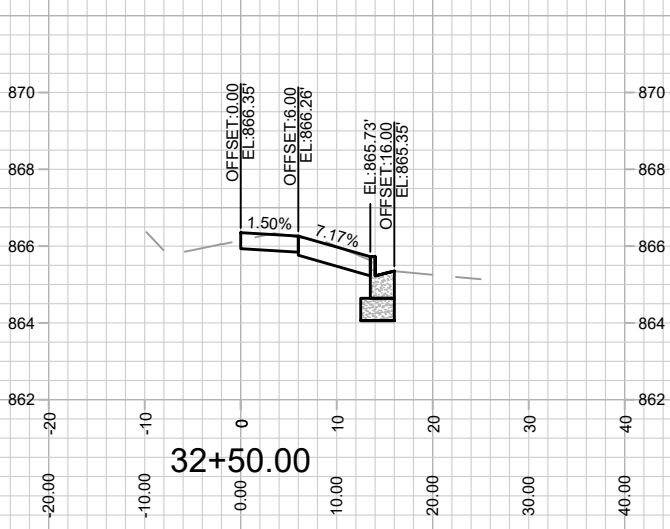
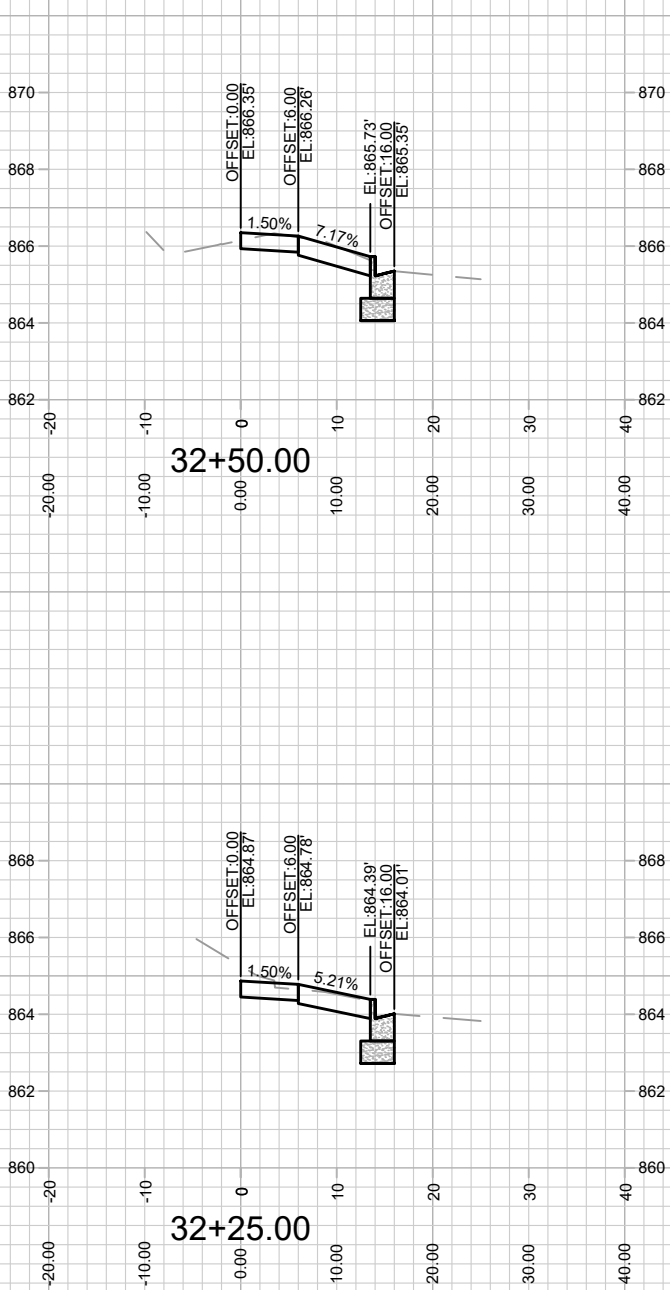
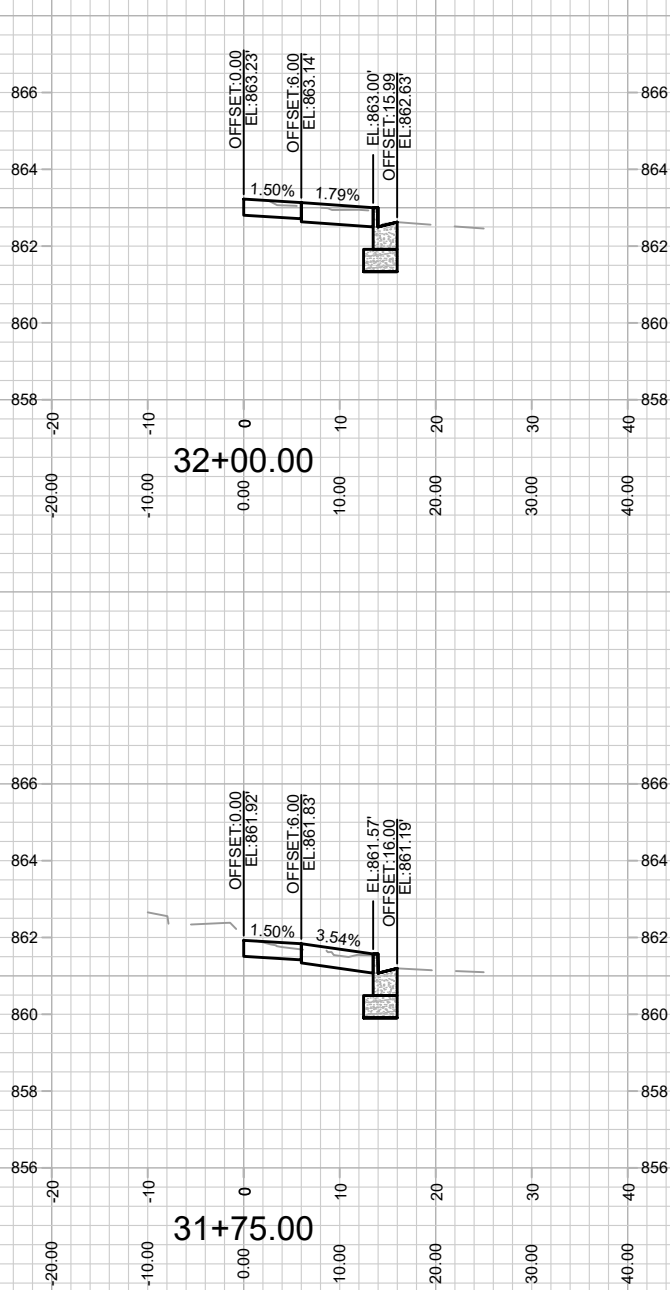
15351

MADISON, WI

9553

CONTRACT NO:

MARK	REVISION	DATE	BY
Designed By: IO	Date: 6/5/2025 8:29 AM	Scale: 1" = 20'	
15351			X-5



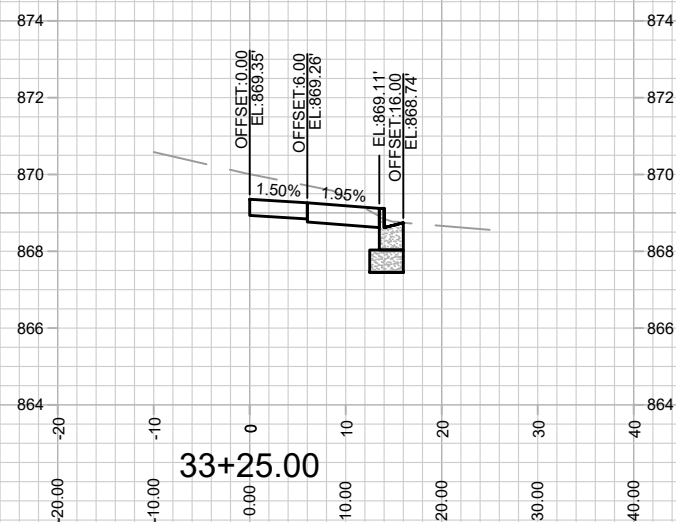
15351
X-6

CROSS SECTION - W JOHNSON STREET
405 W GORHAM STREET

M:\DESIGN\Projects\15351\CAD\Streets\15351\EN-AIP\Prof&Corridor_Setup.dwg

15351
MADISON, WI
CONTRACT NO: 9553

MARK	REVISION	DATE	BY
15351	15351	6/5/2025 8:29 AM	X-6



X-7

MADISON, WI

CONTRACT NO:

M:\DESIGN\Projects\15351\CAD\Streets\15351EN-AllProf&Corridor_Setup.dwg

[illegible]