

Madison, Wisconsin

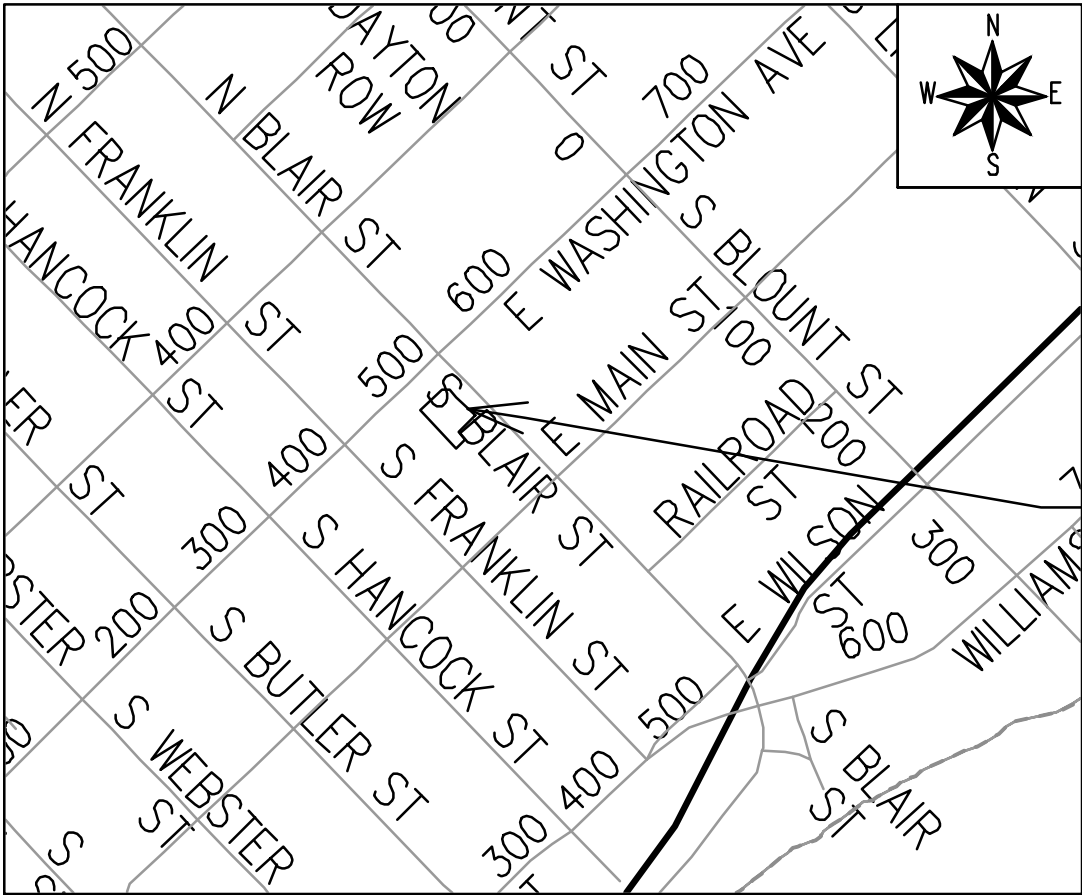
CITY OF MADISON
CITY ENGINEERING DIVISION
DEPARTMENT OF PUBLIC WORKS
PLAN OF PROPOSED IMPROVEMENT

INDEX OF SHEETS

SHEET NO.	D1	STANDARD NOTES
SHEET NO.	D2	TYPICAL SECTION
SHEET NO.	P1-P2	PLAN & PROFILE
SHEET NO.	U1	UTILITY PLAN
SHEET NO.	L1	LANDSCAPING PLAN
SHEET NO.	X1-X2	CROSS SECTIONS
NO MAINTENANCE PLAN REQUIRED		

4 S BLAIR STREET - PORCHLIGHT

CITY PROJECT NO. 15390
CONTRACT NO. 9560



PROJECT
LOCATION

PUBLIC IMPROVEMENT PROJECT
APPROVED

SEPTEMBER 24, 2024

BY THE COMMON COUNCIL
OF MADISON, WISCONSIN

PUBLIC IMPROVEMENT DESIGN
APPROVED BY:

Julie

04/22/2025

City Engineer

Date

STREET
DESIGNED BY:



04/22/2025

STORM SEWER
DESIGNED BY:

LATERAL ONLY

WATER
DESIGNED BY:

LATERAL ONLY

SANITARY SEWER
DESIGNED BY:

LATERAL ONLY

FILED NAME: 15390


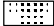

REV. DATE: 4/18/2025 10:31 AM

ORIGINAL: CITY OF MADISON


FILE NAME: M:\DESIGN\Projects\15390\CAD\Streets\15390FN-TLK\Sheet.dwg

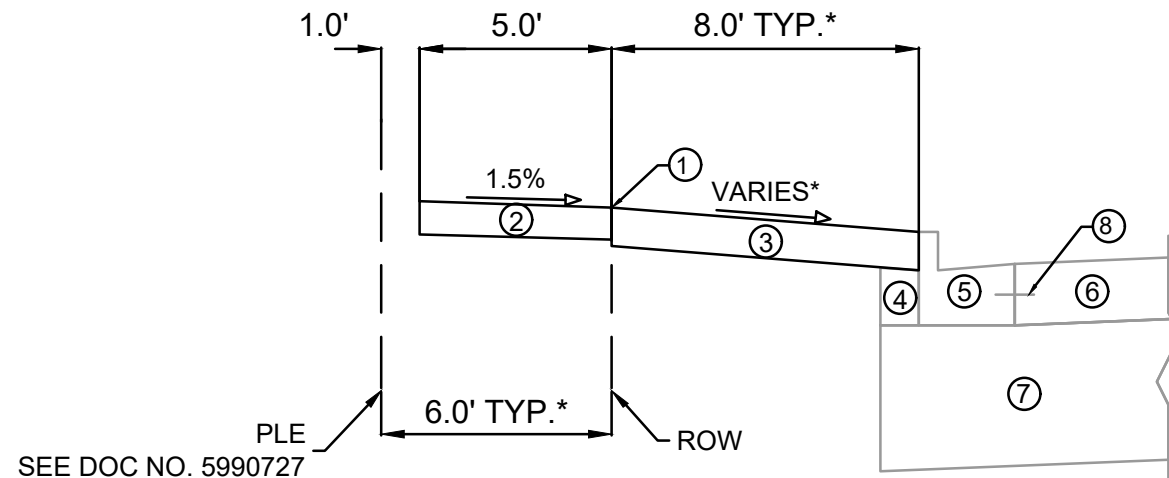
DATE: 4/18/2025 10:32 AM

CONTACT THE CITY CONSTRUCTION ENGINEER, KYLE FRANK, AT
KFRANK@CITYOFMADISON.COM FOR PRECONSTRUCTION SCHEDULING,
COORDINATION, AND INSPECTION.

<i>GAS</i>	_____ G _____
<i>STORM SEWER</i>	_____ ST _____
<i>SANITARY SEWER</i>	_____ SAN _____
<i>WATER</i>	_____ W _____
<i>BURIED ELECTRIC</i>	_____ E _____
<i>OVERHEAD ELECTRIC</i>	_____ OH _____
<i>POWER POLE</i>	
<i>ADA COMPLIANT RAMP W/ DETECTABLE WARNING FIELD</i>	
<i>COMBUSTIBLE FLUIDS</i>	

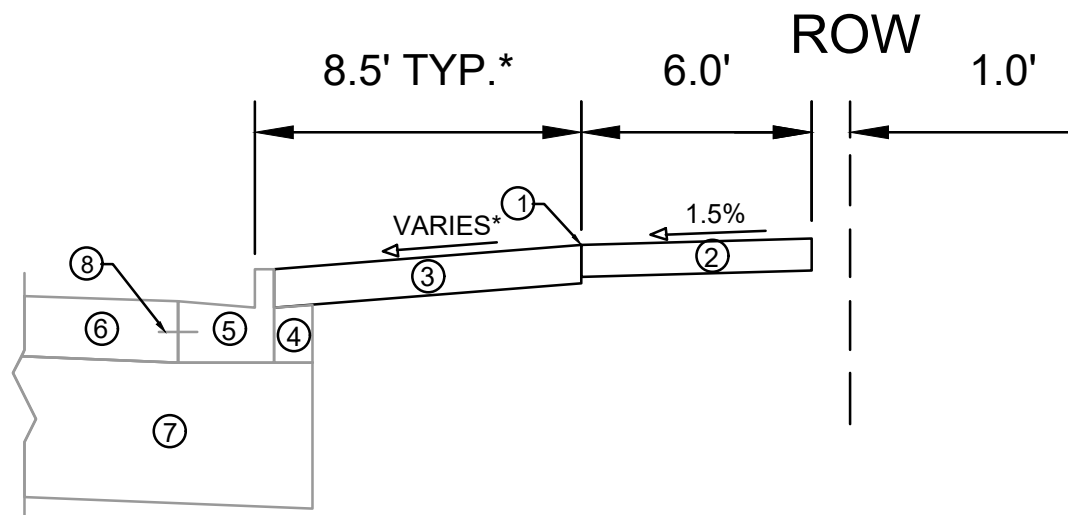
IN LOCATIONS WHERE PAVEMENT RESTORATION IS NOT IDENTIFIED ADJACENT TO CURB AND GUTTER REPLACEMENT, IT IS ASSUMED THAT CURB AND GUTTER WILL BE REPLACED WITHOUT DAMAGING ADJACENT PAVEMENT. IF DAMAGED, THE PAVEMENT RESTORATION LIMITS SHALL BE EXTENDED BY THE CITY CONSTRUCTION ENGINEER AS NECESSARY TO MEET THE STANDARD PATCHING CRITERIA.

D-1
15390

MADISON NOTES STANDARD NOTES 15390
MADISON, WI
4 S BLAIR STREET - PORCHLIGHT
CONTRACT NO:
M:\DESIGN\Projects\15390\CAD\Streets\15390EN-Details.dwg
Desigined By: ## 15390
Date: 4/21/2025 11:04 AM
Sustiner: D-1



SEE DOC NO. 5990727

TYPICAL SECTION
S BLAIR ST



TYPICAL SECTION
E WASHINGTON AVE

SPECIAL NOTES:

- * SEE X-SHEETS AND P-SHEETS FOR CROSS SECTIONS AND SLOPES
- ** ANY CURB REPLACEMENT SHALL INCLUDE TIE BARS INTO THE ADJACENT CONCRETE PAVEMENT IN ACCORDANCE WITH THE CITY OF MADISON S.D.D. 3.10

- ① POINT REFERRED TO ON PROFILE
- ② 5" CONCRETE SIDEWALK
- ③ 6" TOPSOIL, SEED, AND MATT
- ④ EXISTING FILL TO REMAIN, INSTALL AT CURB REPLACEMENT LOCATIONS
- ⑤ EXISTING CONCRETE CURB & GUTTER TYPE A - MODIFIED, REPLACE AT LOCATIONS SHOWN IN P SHEETS OR AS DETERMINED BY CONSTRUCTION ENGINEER. GUTTER THICKNESS SHALL MATCH ADJACENT CONCRETE PAVEMENT THICKNESS.**
- ⑥ EXISTING CONCRETE PAVEMENT TO REMAIN
- ⑦ EXISTING ROAD BASE TO REMAIN
- ⑧ EXISTING TIE BAR

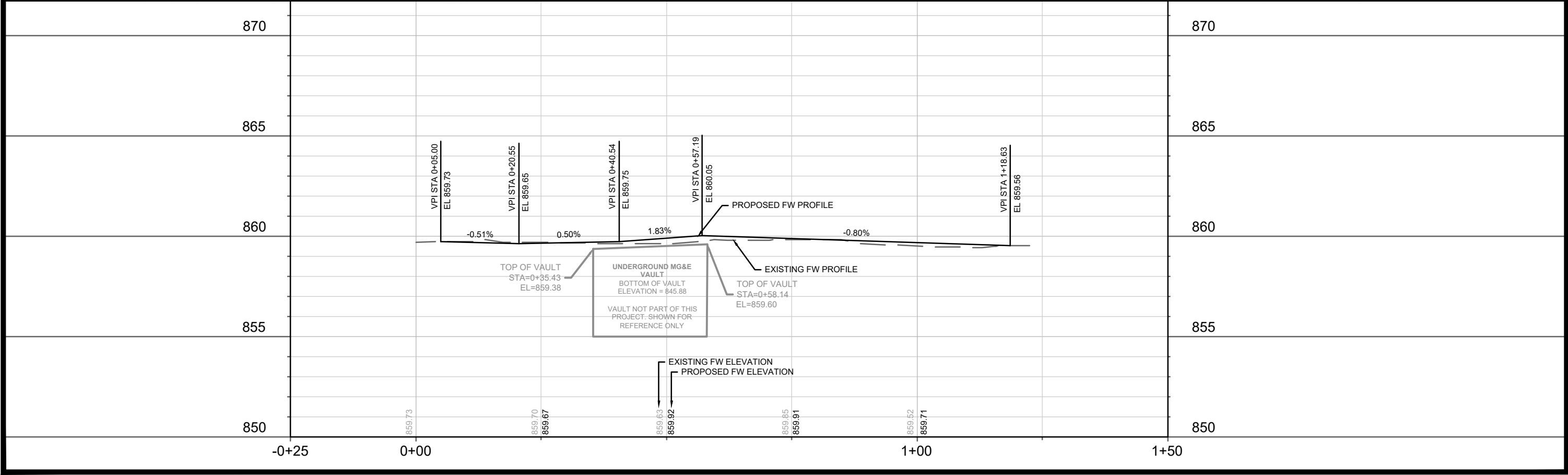
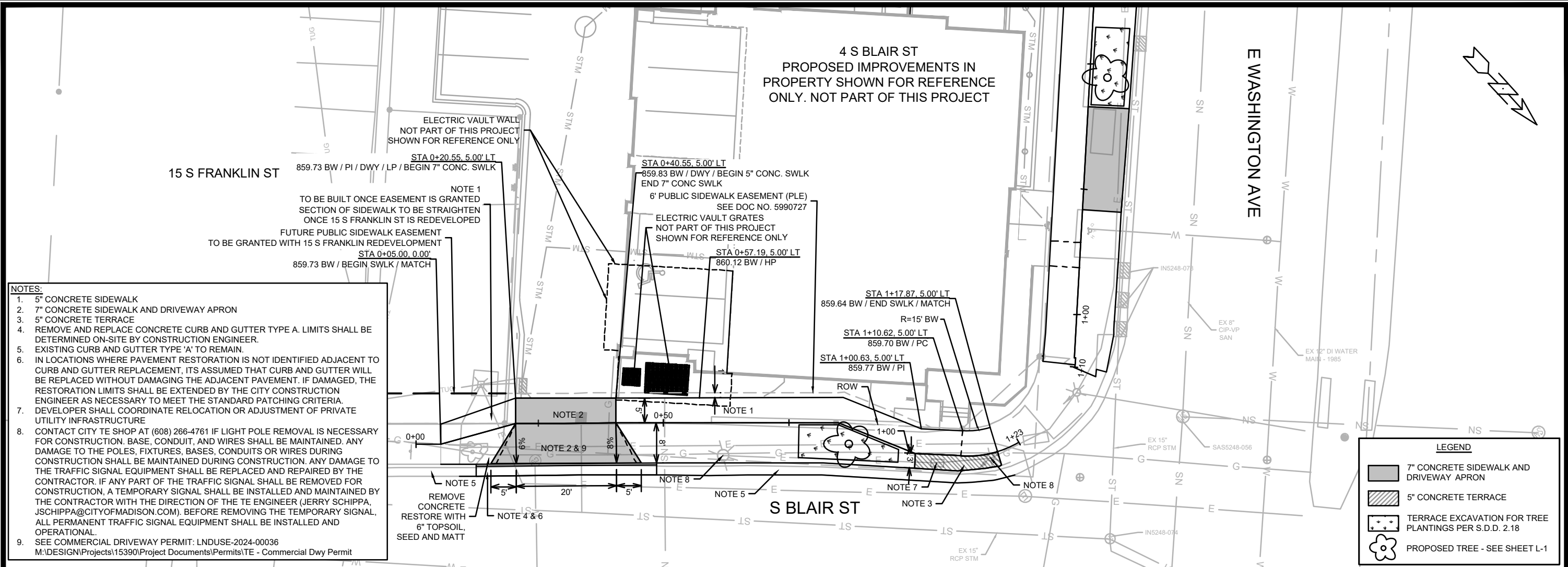
DATE	BY
4/27/2025	11:04 AM
REVISION	15390
MARK	15390
Designed By: GCIT	15390
Scale	D-2

15390
MADISON, WI
CONTRACT NO: 9560

TYPICAL SECTION
4 S BLAIR STREET - PORCHLIGHT
M:\DESIGN\Projects\15390\CAD\Streets\15390EN-Details.dwg

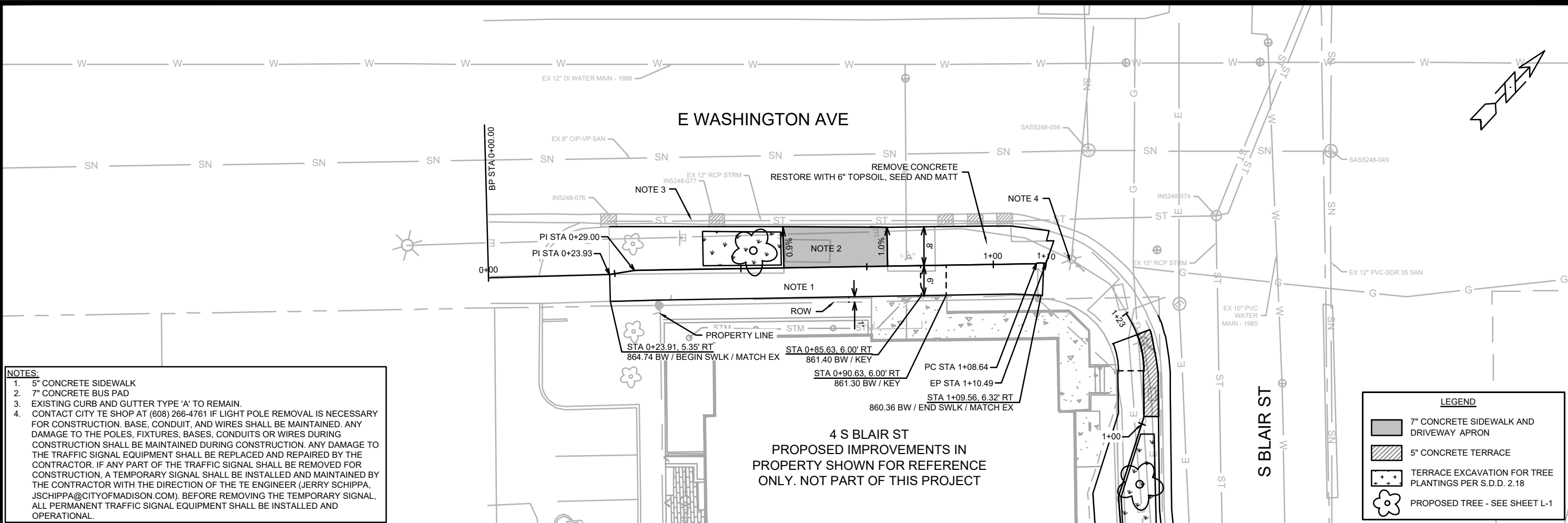


15390
D-2

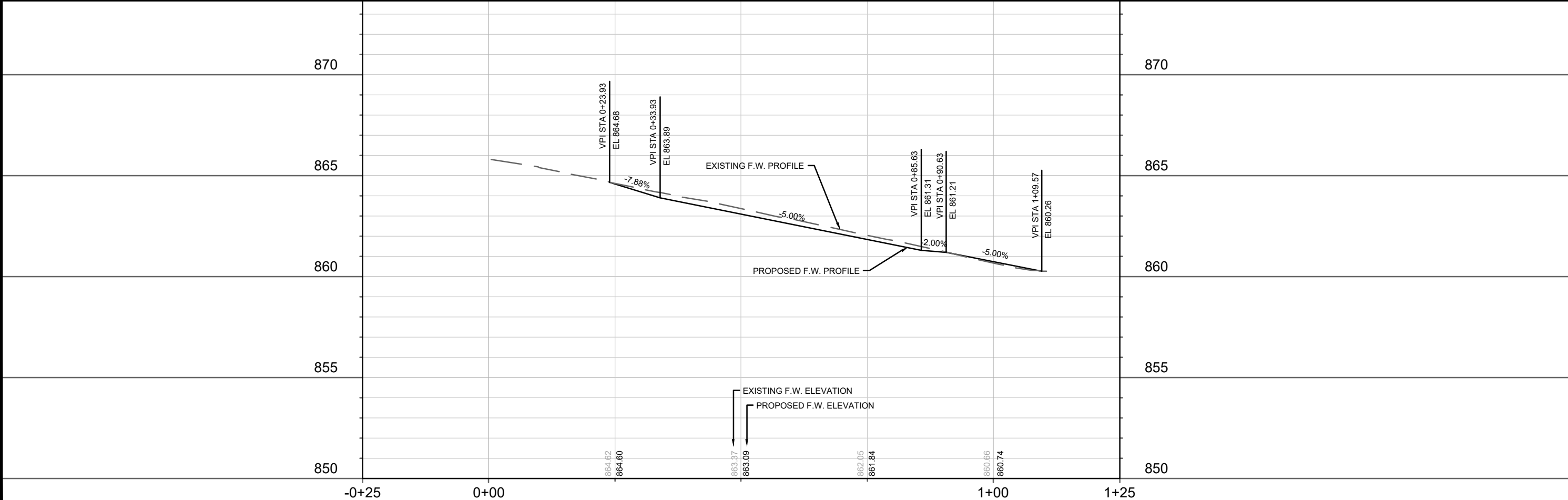


15390	MADISON, WI	9560	CONTRACT NO:
PLAN & PROFILE - BLAIR STREET 4 S BLAIR STREET - PORCHLIGHT			
M:\DESIGN\Projects\15390\CAD\Streets\15390EN-PnP.dwg			
15390 P-1			

DATE	4/21/2025	3:40 PM	Scale: 1/20
REVISION			
MARK			
BY			
P-1			



- NOTES:**
1. 5" CONCRETE SIDEWALK
 2. 7" CONCRETE BUS PAD
 3. EXISTING CURB AND GUTTER TYPE 'A' TO REMAIN.
 4. CONTACT CITY TE SHOP AT (608) 266-4761 IF LIGHT POLE REMOVAL IS NECESSARY FOR CONSTRUCTION. BASE, CONDUIT, AND WIRES SHALL BE MAINTAINED. ANY DAMAGE TO THE POLES, FIXTURES, BASES, CONDUITS OR WIRES DURING CONSTRUCTION SHALL BE MAINTAINED DURING CONSTRUCTION. ANY DAMAGE TO THE TRAFFIC SIGNAL EQUIPMENT SHALL BE REPLACED AND REPAIRED BY THE CONTRACTOR. IF ANY PART OF THE TRAFFIC SIGNAL SHALL BE REMOVED FOR CONSTRUCTION, A TEMPORARY SIGNAL SHALL BE INSTALLED AND MAINTAINED BY THE CONTRACTOR WITH THE DIRECTION OF THE TE ENGINEER (JERRY SCHIPPA, JSCHIPPA@CITYOFMADISON.COM). BEFORE REMOVING THE TEMPORARY SIGNAL, ALL PERMANENT TRAFFIC SIGNAL EQUIPMENT SHALL BE INSTALLED AND OPERATIONAL.

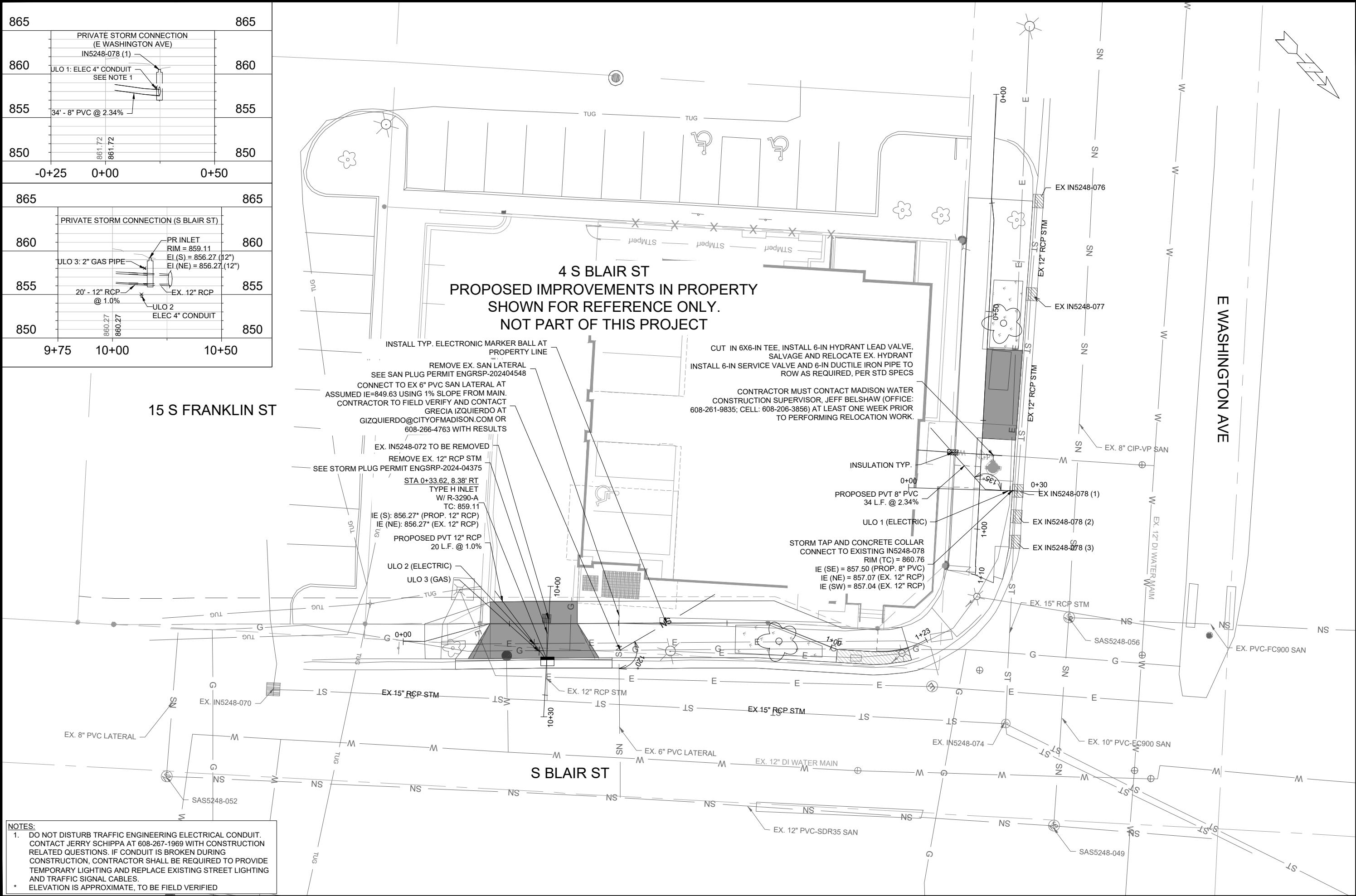


15390		MADISON, WI		CONTRACT NO: 9560	
PLAN & PROFILE - E WASHINGTON AVE		4 S BLAIR STREET - PORCHLIGHT		M:\DESIGN\Projects\15390\CAD\Streets\15390EN-PnP.dwg	
15390		P-2		P-2	

865		865
860	PRIVATE STORM CONNECTION (E WASHINGTON AVE) IN5248-078 (1)	860
855	ULO 1: ELEC 4" CONDUIT SEE NOTE 1	855
850	34' - 8" PVC @ 2.34%	850
	861.72 861.72	
-0+25	0+00	0+50

865		865
860	PRIVATE STORM CONNECTION (S BLAIR ST)	860
855	PR INLET RIM = 859.11 EI (S) = 856.27 (12") EI (NE) = 856.27 (12")	855
850	ULO 3: 2" GAS PIPE 20' - 12" RCP @ 1.0% EX. 12" RCP ULO 2 ELEC 4" CONDUIT	850
	860.27 860.27	
9+75	10+00	10+50

15 S FRANKLIN ST



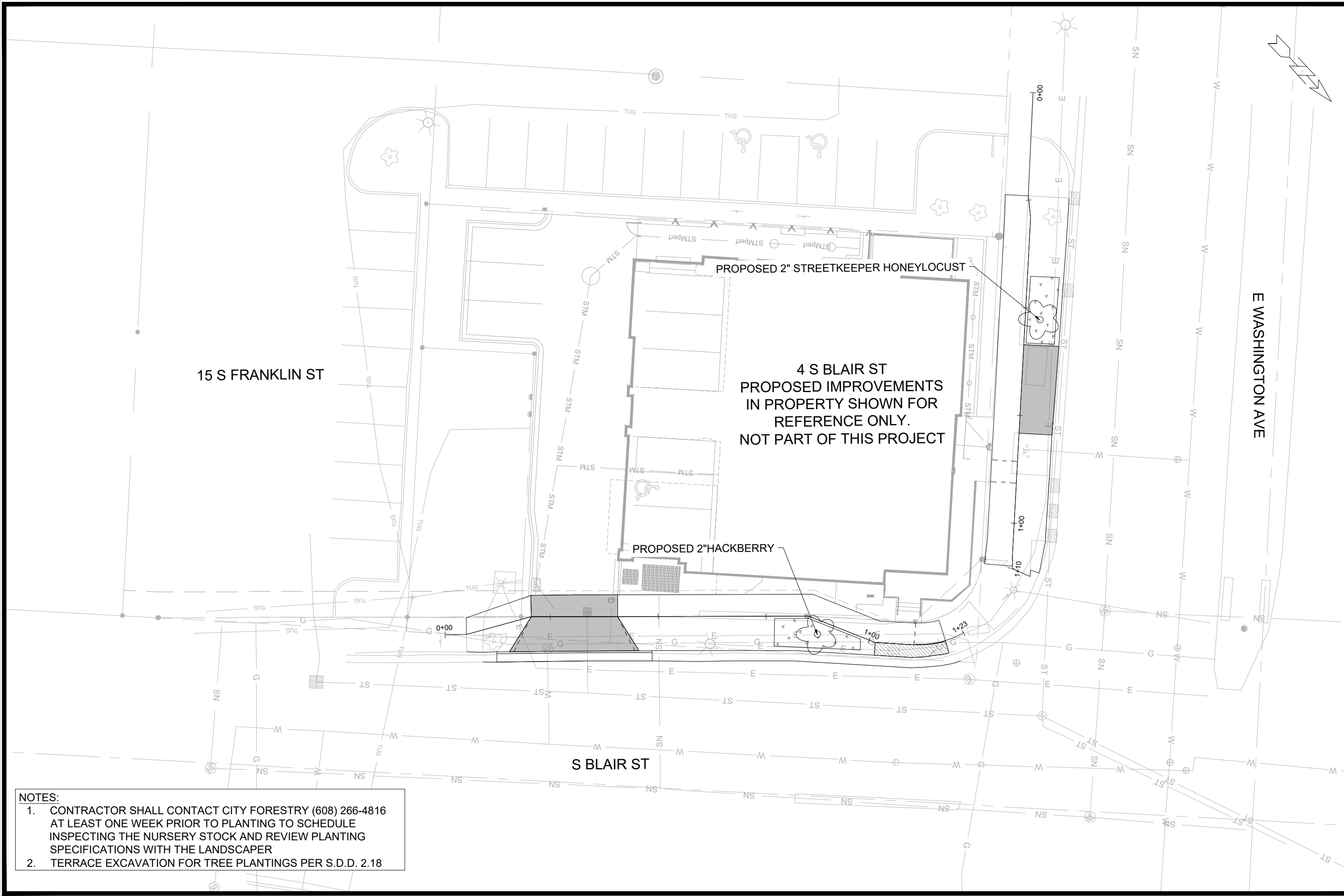
NOTES:
1. DO NOT DISTURB TRAFFIC ENGINEERING ELECTRICAL CONDUIT. CONTACT JERRY SCHIPPA AT 608-267-1969 WITH CONSTRUCTION RELATED QUESTIONS. IF CONDUIT IS BROKEN DURING CONSTRUCTION, CONTRACTOR SHALL BE REQUIRED TO PROVIDE TEMPORARY LIGHTING AND REPLACE EXISTING STREET LIGHTING AND TRAFFIC SIGNAL CABLES.
* ELEVATION IS APPROXIMATE, TO BE FIELD VERIFIED

15390	MADISON, WI	9560
CONTRACT NO:		
UTILITY PLAN		
4 S BLAIR STREET - PORCHLIGHT		
M:\DESIGN\Projects\15390\CAD\Sewers\15390SWR-PnP.dwg		
15390		
U-1		


BY	DATE	REVISION	DATE
U-1	1/20		

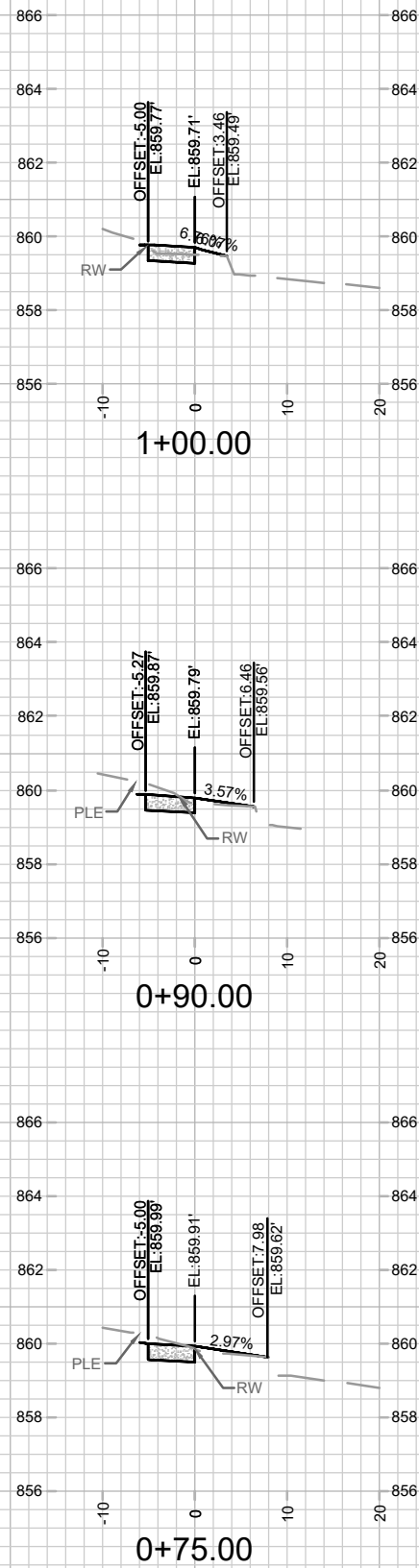
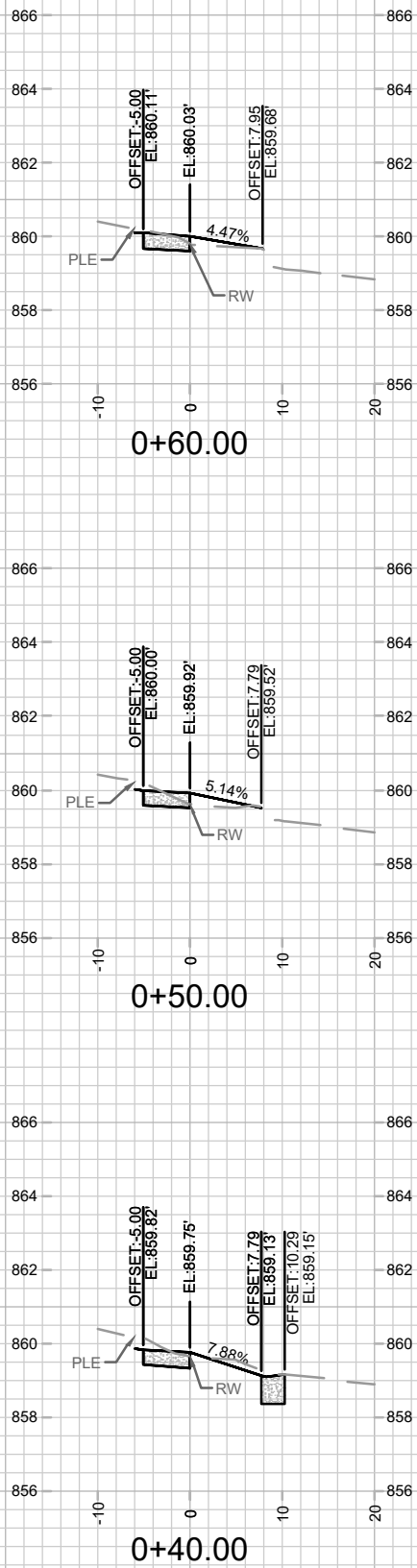
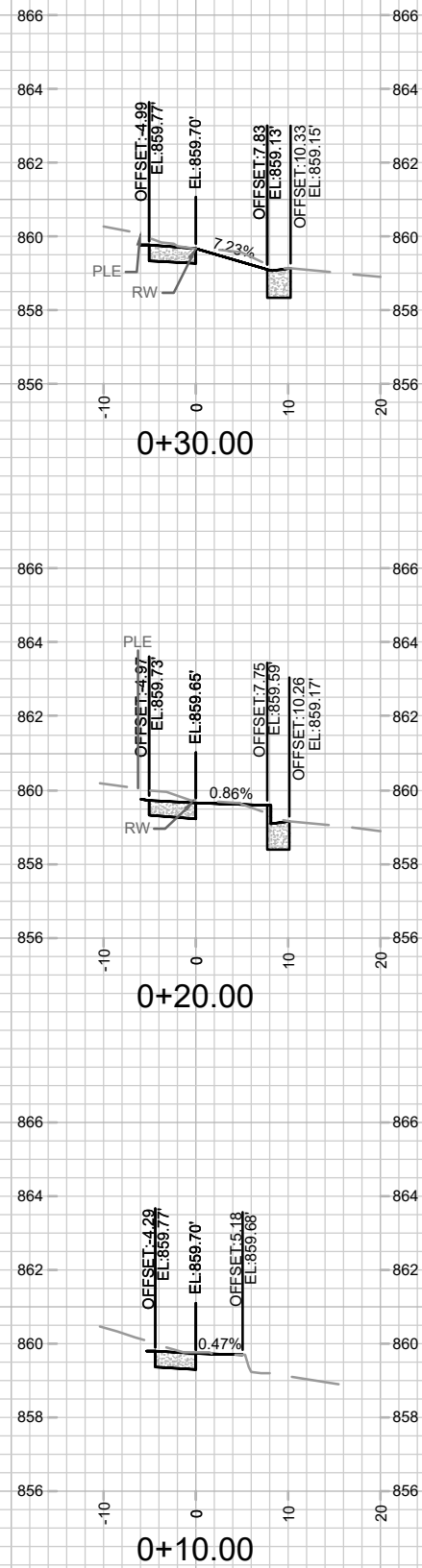
Scale: 1/20

Designed By: GCIT
15390



- NOTES:
1. CONTRACTOR SHALL CONTACT CITY FORESTRY (608) 266-4816 AT LEAST ONE WEEK PRIOR TO PLANTING TO SCHEDULE INSPECTING THE NURSERY STOCK AND REVIEW PLANTING SPECIFICATIONS WITH THE LANDSCAPER
 2. TERRACE EXCAVATION FOR TREE PLANTINGS PER S.D.D. 2.18

	LANDSCAPING PLAN	15390	15390	L-1
	4 S BLAIR STREET - PORCHLIGHT	MADISON, WI		
M:\DESIGN\Projects\15390\CAD\Streets\15390EN-LandscapingPlan.dwg		CONTRACT NO:		
		DESIGNED BY: GCIT	REVISION	DATE
		15390		4/21/2025 3:37 PM
		Scale: 1/20		

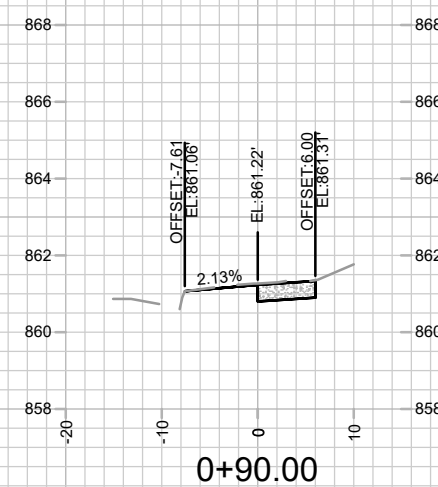
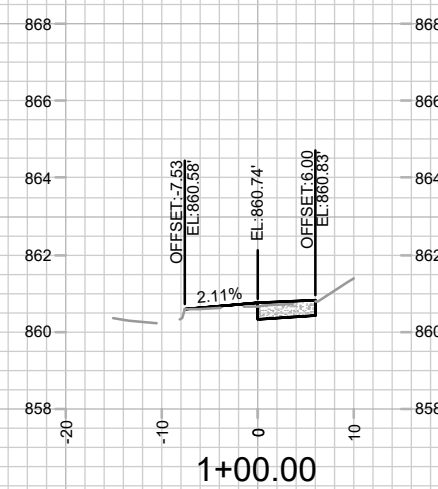
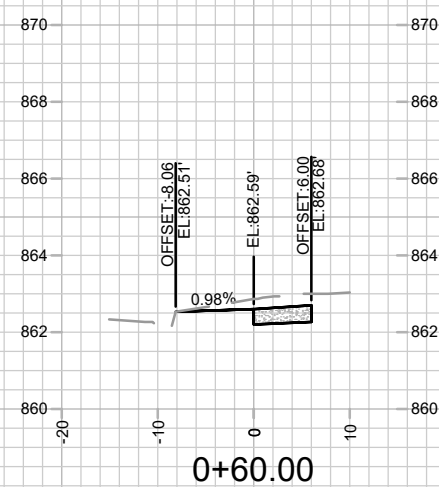
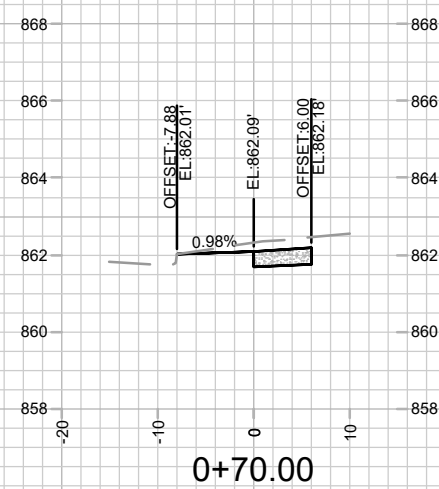
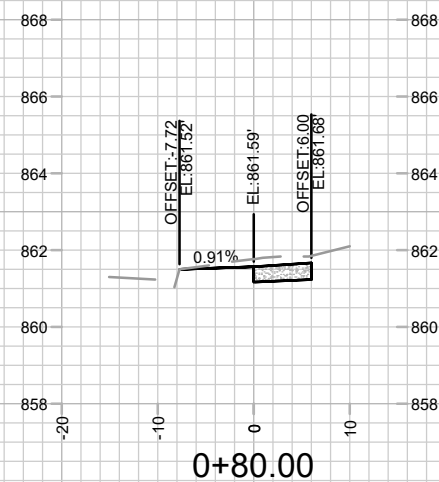
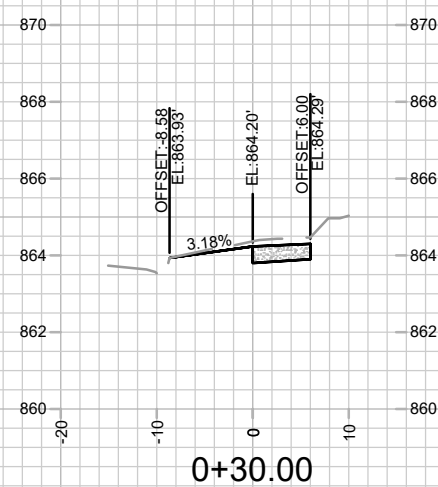
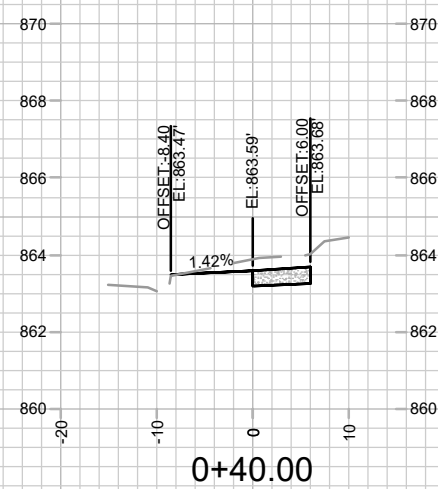
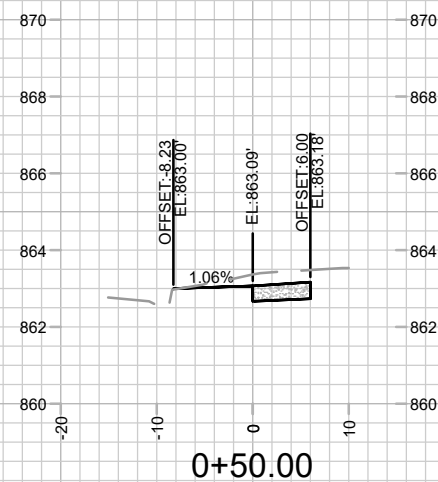


CROSS SECTIONS - S BLAIR ST
4 S BLAIR STREET - PORCHLIGHT

15390
MADISON, WI

CONTRACT NO: 9560

MARK	REVISION	DATE	BY
15390	15390	4/21/2025 3:37 PM	X-1



15390

CROSS SECTIONS - E WASHINGTON AVE

15390

4 S BLAIR STREET - PORCHLIGHT

MADISON, WI

M:\DESIGN\Projects\15390\CAD\Streets\15390EN-Xsections.dwg

CONTRACT NO:

[illegible]