



Madison, Wisconsin

CITY OF MADISON

CITY ENGINEERING DIVISION

DEPARTMENT OF PUBLIC WORKS

PLAN OF PROPOSED IMPROVEMENT

INDEX OF SHEETS

SHEET NO.	STANDARD NOTES
D1	STANDARD NOTES
D2	TYPICAL SECTIONS
O1	OVERVIEW PLAN
P1-P2	PLAN & PROFILES
U1-U2	UTILITIES PLAN & PROFILES
U-SAN	SANITARY SEWER SCHEDULE
U-STM	STORM SEWER SCHEDULE
WI-W2	WATER PLAN & PROFILES
W3	WATER IMPACT PLAN
W4	ESTIMATE OF WATER MATERIALS
L1	LANDSCAPING PLAN
X1-X3	CROSS SECTIONS
MN1	MAINTENANCE PLAN (CITY USE ONLY)

VILLAGE AT AUTUMN LAKE PHASE 16

CITY PROJECT NO. 15445
CONTRACT NO. 9577



PROJECT
LOCATION

PUBLIC IMPROVEMENT PROJECT
APPROVED

APPROVED DATE:
FEBRUARY 11, 2025

BY THE COMMON COUNCIL
OF MADISON, WISCONSIN

PUBLIC IMPROVEMENT DESIGN
APPROVED BY:

 04/30/2026

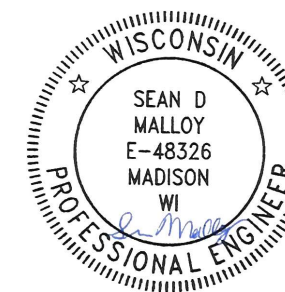
City Engineer Date

STREET
DESIGNED BY:



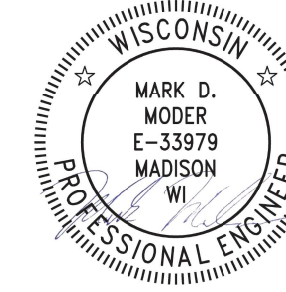
04/30/2026

GEOMETRY
DESIGNED BY:



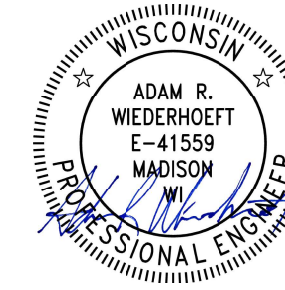
04/30/2026

SANITARY SEWER
DESIGNED BY:



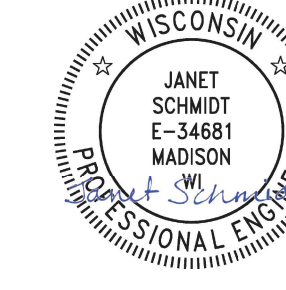
04/30/2026

WATER
DESIGNED BY:



04/30/2026

STORM SEWER
DESIGNED BY:



04/30/2026

PLOT SCALE: 1"=100' XREF

PLOT NAME: ---

REV. DATE: 1/29/2025 10:00 AM

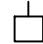
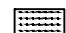

ORIGINATOR: CITY OF MADISON

ALL PROPOSED STREET TREE REMOVALS WITHIN THE RIGHT OF WAY SHALL BE REVIEWED BY CITY FORESTRY BEFORE THE PLAN COMMISSION MEETING. STREET TREE REMOVALS REQUIRE APPROVAL AND A TREE REMOVAL PERMIT ISSUED BY CITY FORESTRY. ANY STREET TREE REMOVALS REQUESTED AFTER THE DEVELOPMENT PLAN IS APPROVED BY THE PLAN COMMISSION OR THE BOARD OF PUBLIC WORKS AND CITY FORESTRY WILL REQUIRE A MINIMUM OF A 72-HOUR REVIEW PERIOD WHICH SHALL INCLUDE THE NOTIFICATION OF THE ALDERPERSON WITHIN WHO'S DISTRICT IS AFFECTED BY THE STREET TREE REMOVAL(S) PRIOR TO A TREE REMOVAL PERMIT BEING ISSUED.

AS DEFINED BY THE SECTION 107.13 OF CITY OF MADISON STANDARD SPECIFICATIONS FOR PUBLIC WORKS CONSTRUCTION: NO EXCAVATION IS PERMITTED WITHIN 5 FEET OF THE TRUNK OF THE STREET TREE OR WHEN CUTTING ROOTS OVER 3 INCHES IN DIAMETER. IF EXCAVATION IS NECESSARY, THE CONTRACTOR SHALL CONTACT MADISON CITY FORESTRY (266-4816) PRIOR TO EXCAVATION. CITY OF MADISON FORESTRY PERSONNEL SHALL ASSESS THE IMPACT TO THE TREE AND TO ITS ROOT SYSTEM PRIOR TO WORK COMMENCING. TREE PROTECTION SPECIFICATIONS CAN BE FOUND ON THE FOLLOWING WEBSITE: [HTTPS://WWW.CITYOFMADISON.COM/BUSINESS/PW/SPECS.CFM](https://www.cityofmadison.com/business/pw/specs.cfm)

DEVELOPER MUST SUBMIT A TRAFFIC CONTROL PLAN TO CITY TRAFFIC ENGINEERING AT LEAST 14 DAYS PRIOR TO THE START OF WORK. WORK SHALL NOT PROCEED UNTIL AN APPROVED TRAFFIC CONTROL PLAN IS IN PLACE.

CONTACT PROJECT ENGINEER AND STREET DESIGNER NICK JAECKELS AT NJAECKELS@CITYOFMADISON.COM FOR CAD AND ALIGNMENT DATA PRIOR TO STAKING.

<i>CONVENTIONAL SIGNS</i>	
<i>FIELD VERIFY ALL UTILITY LOCATIONS</i>	
<i>GAS</i>	—— G ——
<i>STORM SEWER</i>	—— ST ——
<i>SANITARY SEWER</i>	—— SAN ——
<i>WATER</i>	—— W ——
<i>BURIED ELECTRIC</i>	—— E ——
<i>OVERHEAD ELECTRIC</i>	—— OH ——
<i>POWER POLE</i>	
<i>ADA COMPLIANT RAMP W/ DETECTABLE WARNING FIELD</i>	
<i>COMBUSTIBLE FLUIDS</i>	

ALL PAVEMENT IN THE WATERS EDGE TRAIL RIGHT-OF-WAY SHALL BE TYPE A PAVEMENT PER STANDARD DETAIL DRAWING 4.02.

UNDERDRAINS SHALL BE INSTALLED PER STANDARD DETAIL DRAWING 4.05 FOR 75' ON EACH SIDE OF THE LOW POINT, OR TO THE NEAREST CURB HIGH POINT. ALL UNDERDRAIN SHALL BE WRAPPED.

ALL GUTTERS SHALL DRAIN WITH A MINIMUM GRADE OF 0.5% TOWARD STORM SEWER INLETS.

ALL DITCHES SHALL DRAIN WITH A MINIMUM GRADE OF 0.5%

THE CROSS SLOPE OF SIDEWALKS AND BARRIER FREE SIDEWALK CURB RAMPS SHALL TYPICALLY BE 1.5%. THE LONGITUDINAL GRADE OF BARRIER FREE SIDEWALK CURB RAMPS SHALL NOT EXCEED 8.33%. ALL SIDEWALK RAMPS SHALL BE CONSTRUCTED ACCORDING TO S.D.D. 3.04. AT ALL OTHER LOCATIONS THE LONGITUDINAL GRADE OF SIDEWALKS SHALL NOT EXCEED 5.0 % OR THE ADJACENT STREET GRADE WHICHEVER IS GREATER NOR BE LESS THAN 0.5% AND SHALL DRAIN TOWARD STORM SEWER INLETS. SIDE SLOPES WITHIN TEN FEET OF A PUBLIC SIDEWALK SHALL NOT EXCEED 4:1. ALL SIDEWALK AND SIDEWALK RAMP ELEVATIONS AND GRADES SHALL BE FIELD VERIFIED AND SET TO COMPLY WITH THE CITY OF MADISON STANDARD SPECIFICATIONS AND THE A.D.A. GUIDELINES.

OBTAIN A PRINT OUT OF THE ALIGNMENTS FROM THE CITY PROJECT ENGINEER PRIOR TO STAKING THIS PROJECT. THE CITY PROJECT ENGINEER IS NICK JAECKELS, EMAIL: NJAECKELS@CITYOFMADISON.COM

CURB STATION AND OFFSETS SHALL BE TO THE EDGE OF PAVEMENT UNLESS OTHERWISE INDICATED. CURB ELEVATIONS SHALL BE TO THE EDGE OF PAVEMENT UNLESS OTHERWISE INDICATED.

POWER POLES AND OTHER OBSTRUCTIONS SHALL BE MOVED TO PROVIDE 2 FEET MINIMUM OF CLEAR DISTANCE FROM ANY FACE OF CURB OR EDGE OF SIDEWALK UNLESS OTHERWISE INDICATED ON THE PLANS.

ANY INFORMATION SHOWN ON THIS PLAN, WHICH IS NOT PART OF THIS RIGHT-OF-WAY PROJECT, IS PRELIMINARY AND NOT FOR CONSTRUCTION.

THERE MAY BE EXISTING UTILITIES OR OTHER FEATURES WHICH ARE EITHER NOT SHOWN OR SHOWN INCORRECTLY ON THIS PLAN. IT IS THE RESPONSIBILITY OF THE DEVELOPER TO LOCATE AND IDENTIFY ALL UTILITIES AND TOPOGRAPHY WHICH MAY AFFECT THE CONSTRUCTION OF THESE IMPROVEMENTS.

ALL PERMANENT SIGNING AND POSTING WILL BE DETERMINED AND PROVIDED BY THE TRAFFIC ENGINEERING DIVISION, FOLLOWING CONSTRUCTION OF THESE IMPROVEMENTS.

THE DEVELOPER SHALL PROVIDE, INSTALL AND MAINTAIN ALL STREET END BARRICADES, SIGNING AND TRAFFIC CONTROL, AS REQUIRED BY THE CITY TRAFFIC ENGINEER.

PAVEMENT SAWCUTS SHALL BE AS DIRECTED BY THE CITY CONSTRUCTION ENGINEER. SAWCUTS SHOWN ON THE PLAN ARE APPROXIMATE.

CURB ON CUL DE SACS SHALL BE INSTALLED ACCORDING TO S.D.D 3.05.

ALL WORK IN THE RIGHT OF WAY AND PUBLIC EASEMENTS SHALL BE IN ACCORDANCE WITH THE CITY OF MADISON STANDARD SPECIFICATIONS FOR PUBLIC WORKS CONSTRUCTION LATEST EDITION.

ALL PROPOSED IMPROVEMENTS IN THE RIGHT-OF-WAY ARE BASED ON SURVEY DATA PROVIDED BY THE DEVELOPER OR ITS CONSULTANT. IN THE CASE THAT THE PROPOSED IMPROVEMENTS CAN NOT BE INSTALLED PER THESE PLANS OR THE CITY OF MADISON STANDARD SPECIFICATION FOR PUBLIC WORKS CONSTRUCTION, LATEST EDITION, THE DEVELOPER SHALL BE RESPONSIBLE FOR THE COST OF EXTRA WORK DUE TO INACCURACIES OF THE SURVEY.

ALL UTILITY VERIFICATIONS AND ACCURACY OF THE DRAWINGS ARE THE RESPONSIBILITY OF THE DEVELOPER. ANY CONFLICTS THAT ARISE FROM MISSING OR ERRONEOUS INFORMATION WILL BE AT THE EXPENSE OF THE DEVELOPER. NO PRECAST STRUCTURES WILL BE APPROVED FOR STORM OR SANITARY SEWER UNTIL ALL POTENTIAL UTILITY CONFLICTS ARE RESOLVED.

IN LOCATIONS WHERE PAVEMENT RESTORATION IS NOT IDENTIFIED ADJACENT TO CURB AND GUTTER REPLACEMENT, IT IS ASSUMED THAT CURB AND GUTTER WILL BE REPLACED WITHOUT DAMAGING ADJACENT PAVEMENT. IF DAMAGED, THE MILL AND OVERLAY LIMITS SHALL BE EXTENDED BY THE CITY CONSTRUCTION ENGINEER AS NECESSARY TO MEET THE STANDARD PATCHING CRITERIA.

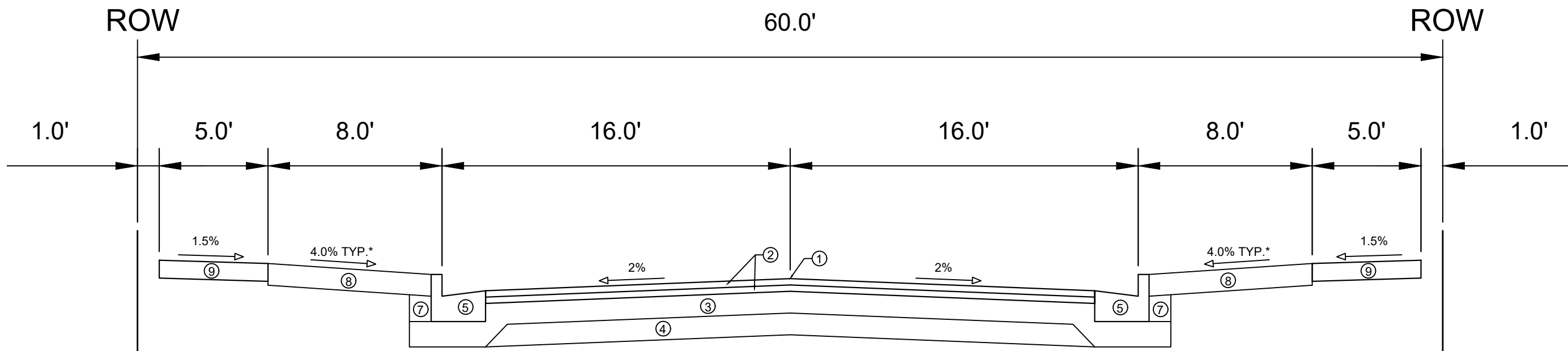
DATE	BY
4/17/2028 3:27 PM	
REVISION	
MARK	
Designed By: N.J.J.	
15445	
Scale:	D-1

15445
MADISON, WI
9577
CONTRACT NO:

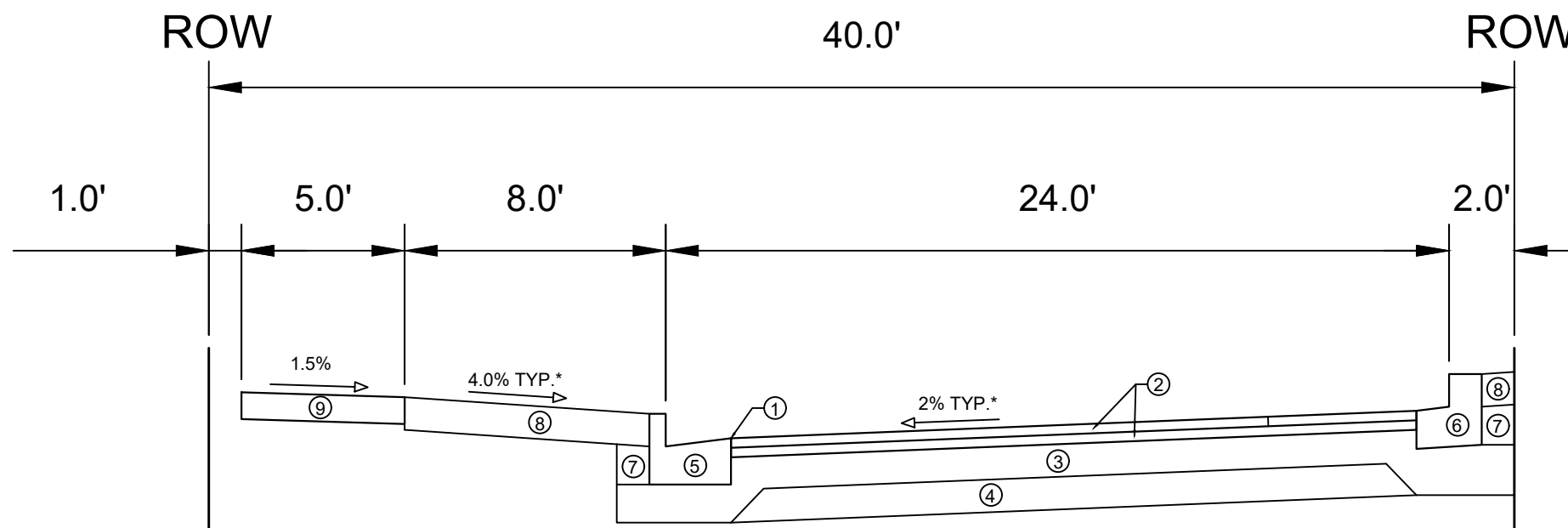
STANDARD NOTES
VILLAGE AT AUTUMN LAKE PHASE 16
M:\DESIGN\Projects\15445\CAD\Streets\15445EN-Details.dwg



15445
D-1



TYPICAL SECTION
WATERS EDGE TRAIL



TYPICAL SECTION
WATERS EDGE TRAIL
(SIDE STREET)

SPECIAL NOTES:

- * SEE P & X SHEETS FOR CROSS SLOPES
- ** SEE O SHEET FOR SURFACE PAVING RESPONSIBILITY

- ① POINT REFERRED TO ON PROFILE
- ② 1.75" H.M.A. PAVEMENT- TYPE 4 LT 58-28 S**
- ③ 6" CRUSHED AGGREGATE BASE COURSE GRADATION 2
- ④ 6" CRUSHED AGGREGATE BASE COURSE GRADATION 1
- ⑤ CONCRETE CURB AND GUTTER TYPE 'A'
- ⑥ TRAFFIC CIRCLE MOUNTABLE CONCRETE CURB AND GUTTER
- ⑦ FILL
- ⑧ 6" TOPSOIL, SEED AND MATTING
- ⑨ 5" CONCRETE SIDEWALK

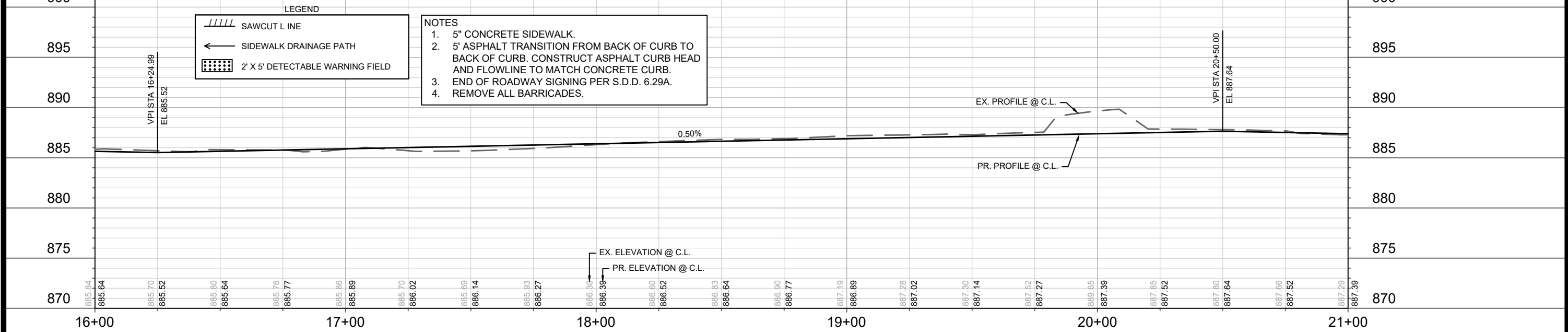
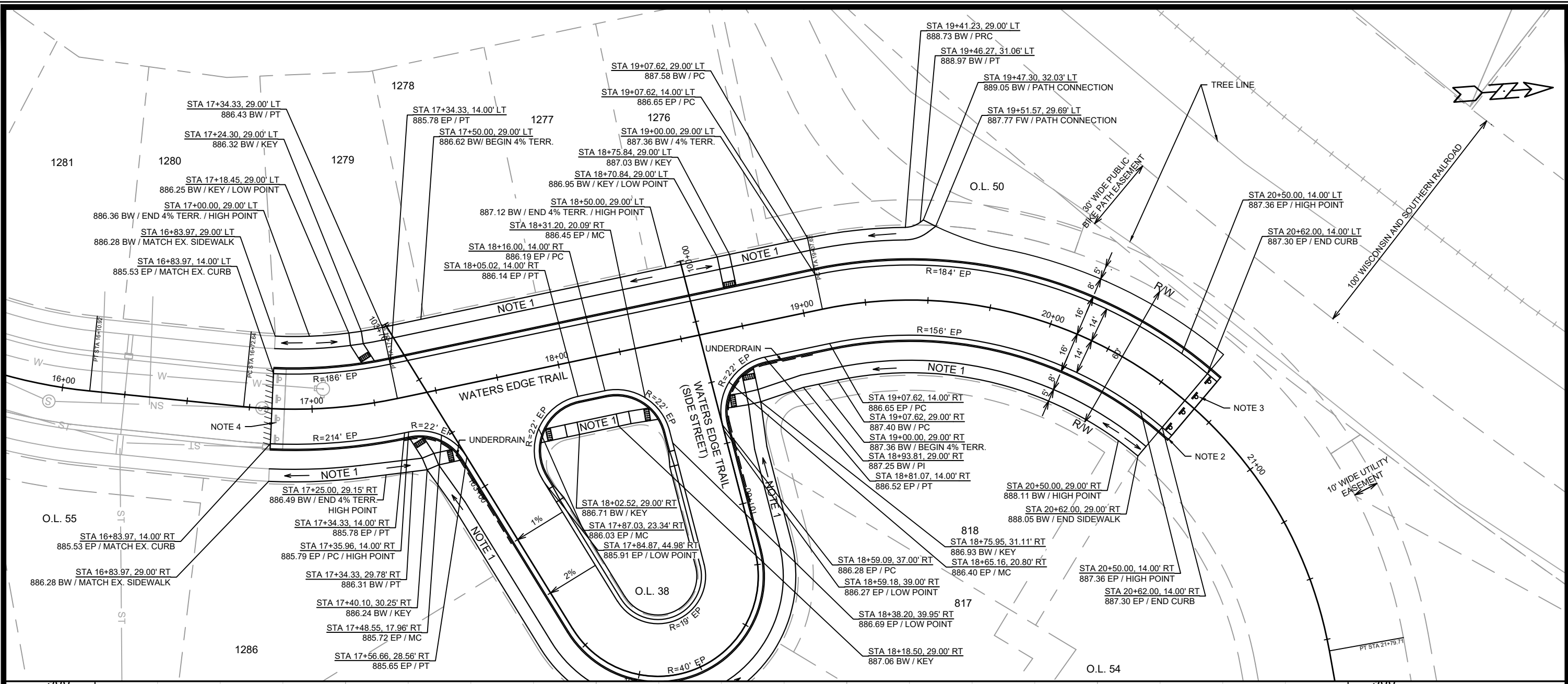
MARK	REVISION	DATE	BY
15445		4/17/2028 3:27 PM	
Designed By: N.J.			Scale:
			D-2

15445
MADISON, WI
CONTRACT NO: 9577

TYPICAL SECTIONS
VILLAGE AT AUTUMN LAKE PHASE 16
M:\DESIGN\Projects\15445\CAD\Streets\15445EN-Details.dwg



15445
D-2



LEGEND

	SAWCUT LINE
	SIDEWALK DRAINAGE PATH
	2' X 5' DETECTABLE WARNING FIELD

- NOTES**
- 5" CONCRETE SIDEWALK.
 - 5' ASPHALT TRANSITION FROM BACK OF CURB TO BACK OF CURB. CONSTRUCT ASPHALT CURB HEAD AND FLOWLINE TO MATCH CONCRETE CURB.
 - END OF ROADWAY SIGNING PER S.D.D. 6.29A.
 - REMOVE ALL BARRICADES.

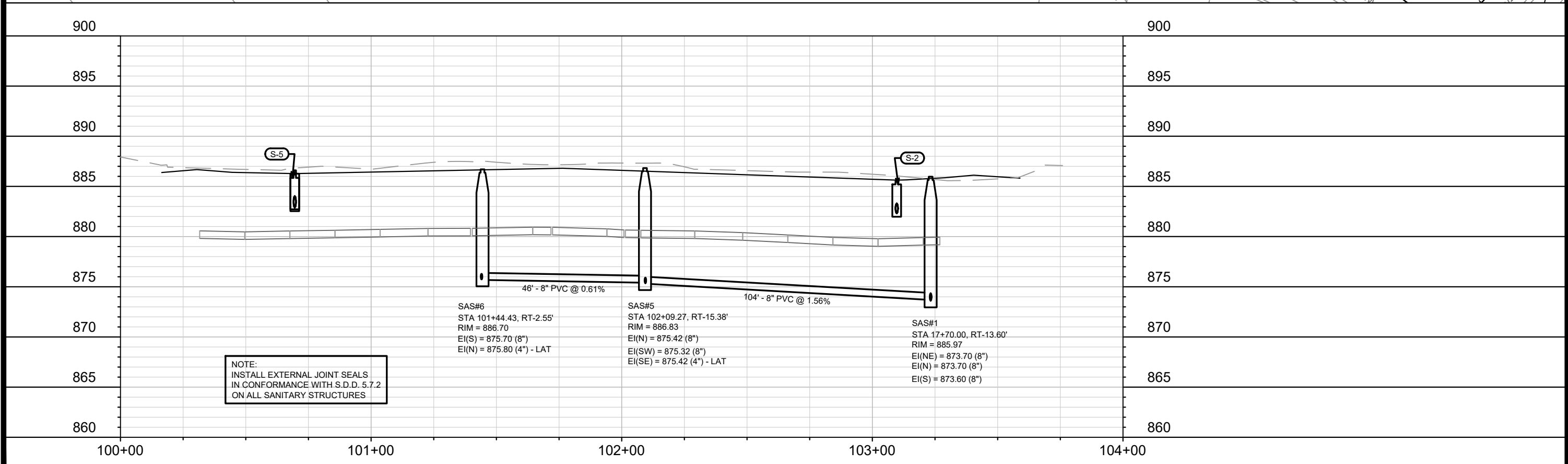
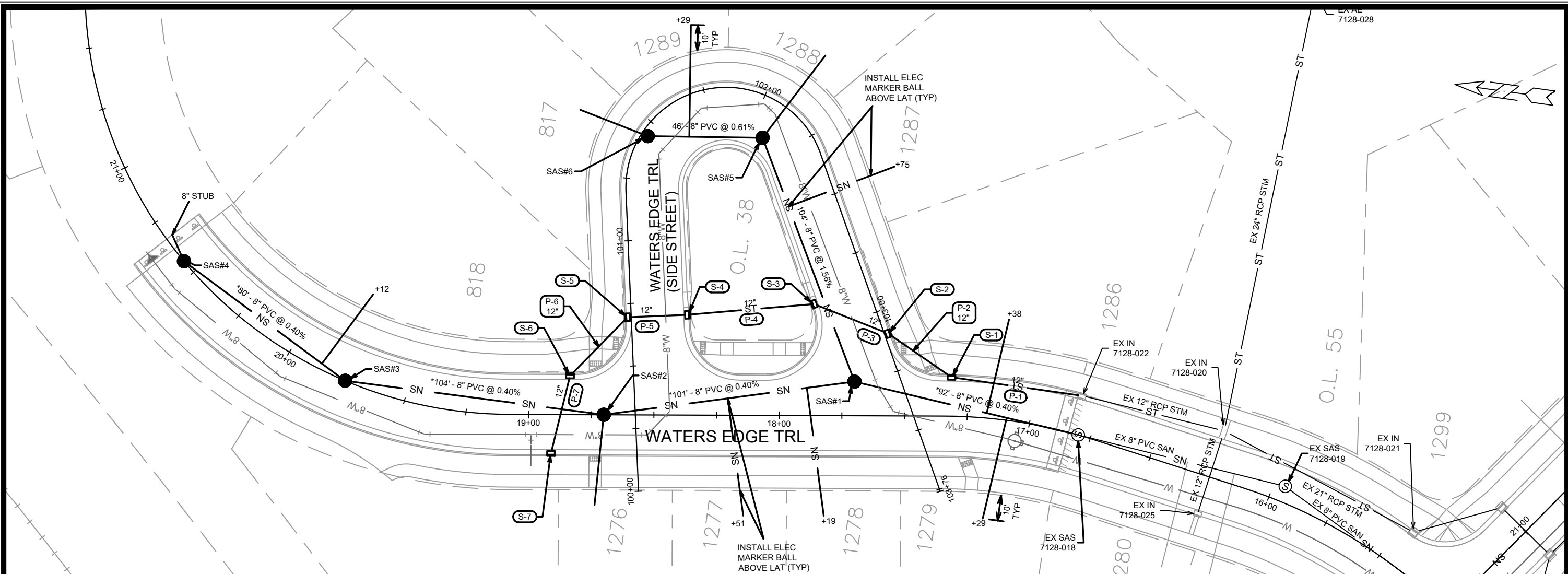
DATE	BY
REVISION	
MARK	
Designed By: NJL	Date: 4/29/2026 9:24 AM
15445	P-1

15445
MADISON, WI
CONTRACT NO: 9577

PLAN AND PROFILE - WATERS EDGE TRAIL
VILLAGE AT AUTUMN LAKE PHASE 16
M:\DESIGN\Projects\15445\CAD\Streets\15445EN-PnP.dwg



15445
P-1



NOTE:
INSTALL EXTERNAL JOINT SEALS
IN CONFORMANCE WITH S.D.D. 5.7.2
ON ALL SANITARY STRUCTURES

SAS#6
STA 101+44.43, RT-2.55'
RIM = 886.70
EI(S) = 875.70 (8")
EI(N) = 875.80 (4") - LAT

SAS#5
STA 102+09.27, RT-15.38'
RIM = 886.83
EI(N) = 875.42 (8")
EI(SW) = 875.32 (8")
EI(SE) = 875.42 (4") - LAT

SAS#1
STA 17+70.00, RT-13.60'
RIM = 885.97
EI(NE) = 873.70 (8")
EI(N) = 873.70 (8")
EI(S) = 873.60 (8")

MARK	REVISION	DATE	BY
15445			

15445
MADISON, WI
CONTRACT NO: 9577

UTILITIES PLAN AND PROFILE - WATERS EDGE TRAIL (SIDE STREET)
VILLAGE AT AUTUMN LAKE PHASE 16



15445
U-2

SANITARY SEWER SCHEDULE

VILLAGE AT AUTUMN LAKE PHASE 16

SHEET NO.

PROJECT NO. 15445

U-SAN

SANITARY SEWER SCHEDULE

CITY OF MADISON

PROPOSED SANITARY STRUCTURES

SAS NO.	STATION	LOCATION (OFFSET)	TOP OF CASTING	E.I.	DEPTH (FT)	NOTES
---------	---------	-------------------	----------------	------	------------	-------

WATERS EDGE TRAIL

SAS#1	17+70.00	RT-13.60	885.97	873.60	12.37	(1)
SAS#2	18+70.00	CL	886.74	874.10	12.64	(1)
SAS#3	19+75.00	CL	887.27	874.62	12.65	(1)
SAS#4	20+55.80	CL	887.61	875.04	12.57	(1)

WATERS EDGE TRAIL (SIDE STREET)

SAS#5	102+09.27	RT-15.38	886.83	875.32	11.51	(1)
SAS#6	101+44.43	RT-2.55	886.70	875.70	11.00	(1)

PROPOSED SANITARY PIPES

FROM (DNSTM)	TO (UPSTM)	DWNSTRM E.I.	UPSTRM E.I.	PLAN LGTH (FT)	SLOPE (%)	PIPE SIZE	PVC TYPE	NOTES
--------------	------------	--------------	-------------	----------------	-----------	-----------	----------	-------

WATERS EDGE TRAIL

EX SAS 7128-018	SAS#1	873.23	873.60	92	0.40%	8"	SDR-26	-
SAS#1	SAS#2	873.70	874.10	101	0.40%	8"	SDR-26	-
SAS#2	SAS#3	874.20	874.62	104	0.40%	8"	SDR-26	-
SAS#3	SAS#4	874.72	875.04	80	0.40%	8"	SDR-26	-

OUTLOT 38

SAS#1	SAS#5	873.70	875.32	104	1.56%	8"	SDR-35	-
SAS#5	SAS#6	875.42	875.70	46	0.61%	8"	SDR-35	-

NOTES:

- ALL STRUCTURES SHALL BE SUBMITTED TO CITY ENGINEERING FOR APPROVAL. CONTACT ELIA E ACOSTA OF CITY ENGINEERING AT (608) 266-4096 FOR PRECAST APPROVALS, FAX SHOP DRAWINGS TO (608)264-9275, OR EMAIL SHOP DRAWINGS TO EACOSTA@CITYOFMADISON.COM.

(1) INSTALL EXTERNAL JOINT SEALS IN CONFORMANCE WITH S.D.D. 5.7.2

STORM SEWER SCHEDULE

VILLAGE AT AUTUMN LAKE PHASE 16	SHEET NO.
PROJECT NO. 15445	U-STM
STORM SEWER SCHEDULE	
CITY OF MADISON	

PROPOSED STORM STRUCTURES

STRUC. NO.	STATION	LOCATION (OFFSET)	TYPE	TOP OF CASTING	E.I.	DEPTH	NOTES
WATERS EDGE TRAIL							
S-1	17+31.50	RT-15.50	H INLET	886.15	881.95	4.20	W/ R-3067-7004-V
S-6	18+83.50	RT-15.50	H INLET	886.91	883.31	3.60	W/ R-3067-7004-V
S-7	18+91.00	LT-15.50	H INLET	886.94	883.54	3.40	W/ R-3067-7004-V
WATERS EDGE TRAIL (SIDE STREET)							
S-2	103+09.72	LT-1.50	H INLET	886.01	882.31	3.70	LP; W/ R-3067-7004-VB
S-3	102+88.70	RT-22.50	H INLET	886.29	882.49	3.80	LP; W/ R-3067-7004-VB
S-4	100+69.53	RT-22.50	H INLET	887.07	882.87	4.20	LP; W/ R-3067-7004-VB
S-5	100+69.53	LT-1.50	H INLET	886.65	883.05	3.60	LP; W/ R-3067-7004-VB

PROPOSED STORM PIPES

PIPE NO.	FROM (DNSTM)	TO (UPSTM)	DISCH. E.I.	INLET E.I.	PLAN (PAY) LGTH (FT)	PIPE LGTH (FT)	SLOPE (%)	PIPE SIZE	TYPE	NOTES
WATERS EDGE TRAIL										
P-1	EX IN 7128-022	S-1	881.26	881.95	53	50	1.38%	12"	TYPE I	-
P-6	S-5	S-6	883.05	883.31	33	30	0.87%	12"	TYPE II	-
P-7	S-6	S-7	883.31	883.54	32	30	0.77%	12"	TYPE I	-
OUTLOT 38										
P-2	S-1	S-2	881.95	882.31	31	27	1.33%	12"	TYPE II	-
P-3	S-2	S-3	882.31	882.49	32	29	0.62%	12"	TYPE I	-
P-4	S-3	S-4	882.49	882.87	51	49	0.78%	12"	TYPE II	-
P-5	S-4	S-5	882.87	883.05	24	22	0.82%	12"	TYPE I	-

STANDARD NOTES:

-PLAN LENGTH (PAY LENGTH) IS FROM CENTER OF STRUCTURE TO CENTER OF STRUCTURE. PIPE LENGTH IS ACTUAL LENGTH OF PIPE FROM STRUCTURE WALL TO STRUCTURE WALL. SLOPE CALCULATED USING PIPE LENGTH.

- ABBREVIATIONS: AE = APRON ENDWALL; RCP = REINFORCED CONCRETE PIPE; HERCP = HORIZONTAL ELLIPTICAL REINFORCED CONCRETE PIPE; DNA = DOES NOT APPLY; SAS = SEWER ACCESS STRUCTURE; LP = LOW POINT INLET STRUCTURE; FP = FIELD Poured STRUCTURE; TR = TOP OF CONCRETE ROOF; NCM = NO CROWN MATCH FOR PIPES; UD = UNDERDRAIN

- APPROXIMATE DISCHARGE E.I. GIVEN, ADJUST E.I. AND PIPE SLOPE IN THE FIELD.

- TOP OF CASTING GRADE GIVEN IS THE TOP OF CURB FOR INLET STRUCTURES AND THE FLOWLINE OF THE CLOSED CASTING FOR SAS's.

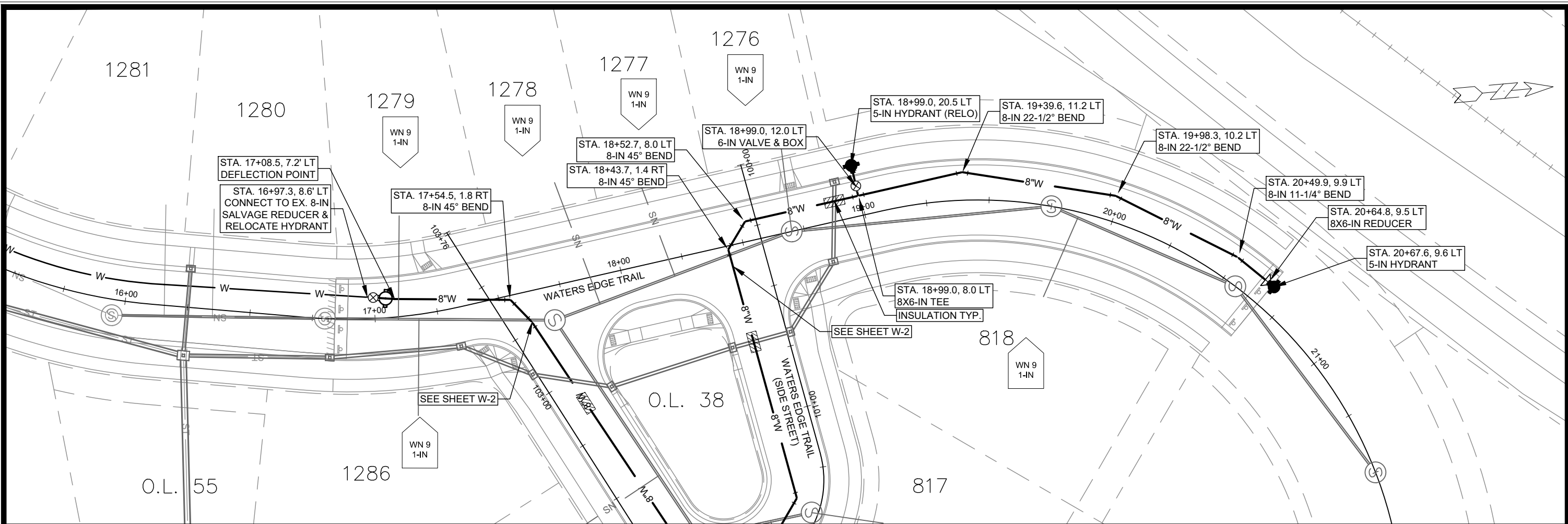
- ALL REINFORCED CONCRETE PIPES TO BE CLASS III UNLESS OTHERWISE NOTED.

- SURVEYOR TO CONFIRM THAT ALL INLET STATION / OFFSETS LINE UP WITH PROPOSED CURB AND GUTTER.

-ALL FIELD Poured SAS STORM STRUCTURES SHALL BE CONSTRUCTED IN ACCORDANCE WITH STANDARD DETAIL DRAWING 5.7.3. ALL PRECAST SAS STORM STRUCTURES SHALL BE CONSTRUCTED IN ACCORDANCE WITH STANDARD DETAIL DRAWING 5.7.5.

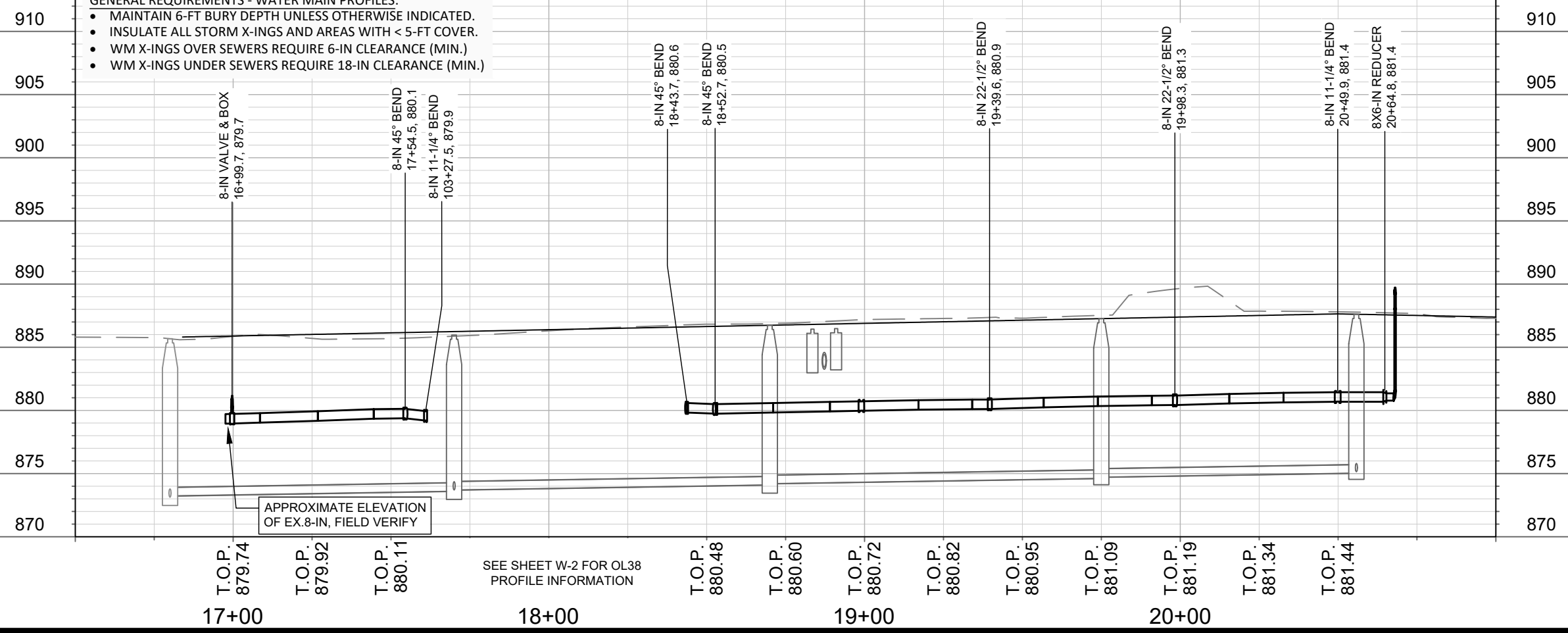
- ALL STRUCTURES CALLED OUT AS FIELD Poured SHALL BE FIELD Poured. ALL OTHER STRUCTURES (NOT INDICATED AS FIELD Poured) SHALL BE SUBMITTED TO CITY ENGINEERING FOR APPROVAL IF PRECAST STRUCTURES ARE PREFERRED. CONTACT ELIA E ACOSTA OF CITY ENGINEERING AT (608) 266-4096 FOR STORM SEWER PRECAST APPROVALS, FAX SHOP DRAWINGS TO (608)264-9275, OR EMAIL SHOP DRAWINGS TO EACOSTA@CITYOFMADISON.COM.

-FOR SWM PRECAST APPROVALS CONTACT PHIL GAEBLER AT (608) 266-4059 OR EMAIL SWM SHOP DRAWINGS TO PGAEBLER@CITYOFMADISON.COM



GENERAL REQUIREMENTS - WATER MAIN PROFILES:

- MAINTAIN 6-FT BURY DEPTH UNLESS OTHERWISE INDICATED.
- INSULATE ALL STORM X-INGS AND AREAS WITH < 5-FT COVER.
- WM X-INGS OVER SEWERS REQUIRE 6-IN CLEARANCE (MIN.)
- WM X-INGS UNDER SEWERS REQUIRE 18-IN CLEARANCE (MIN.)



15445
MADISON, WI
CONTRACT NO: 9577

WATER PLAN AND PROFILE - WATERS EDGE TRAIL
VILLAGE AT AUTUMN LAKE PHASE 16

15445
W-1

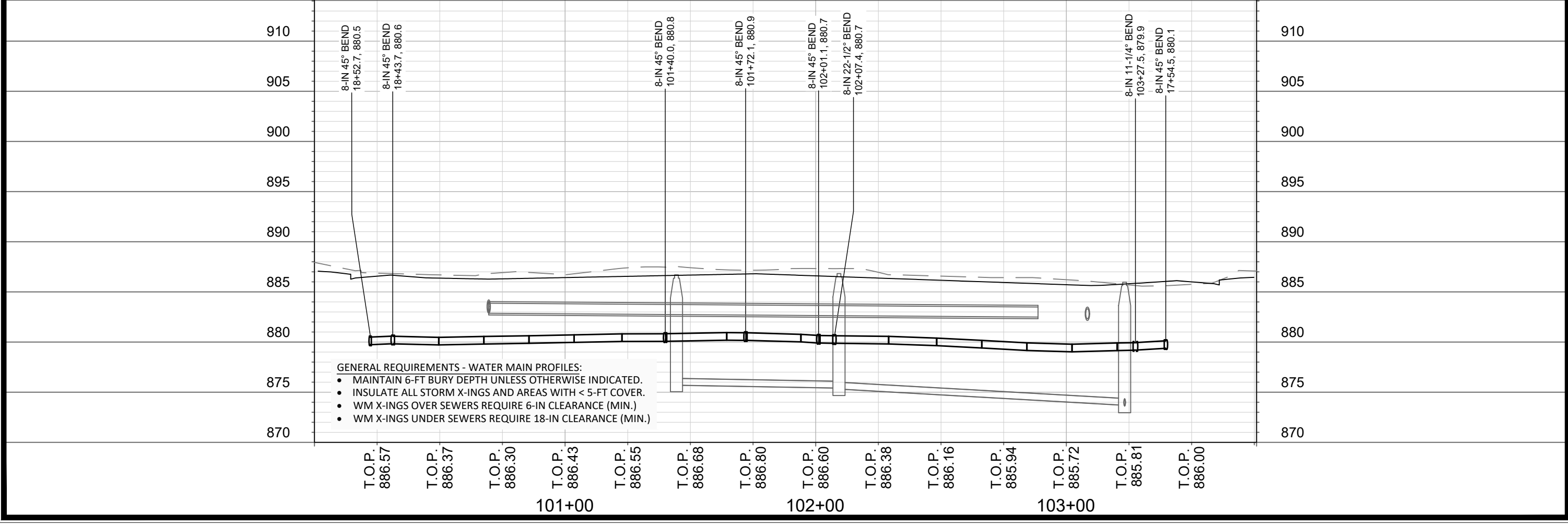
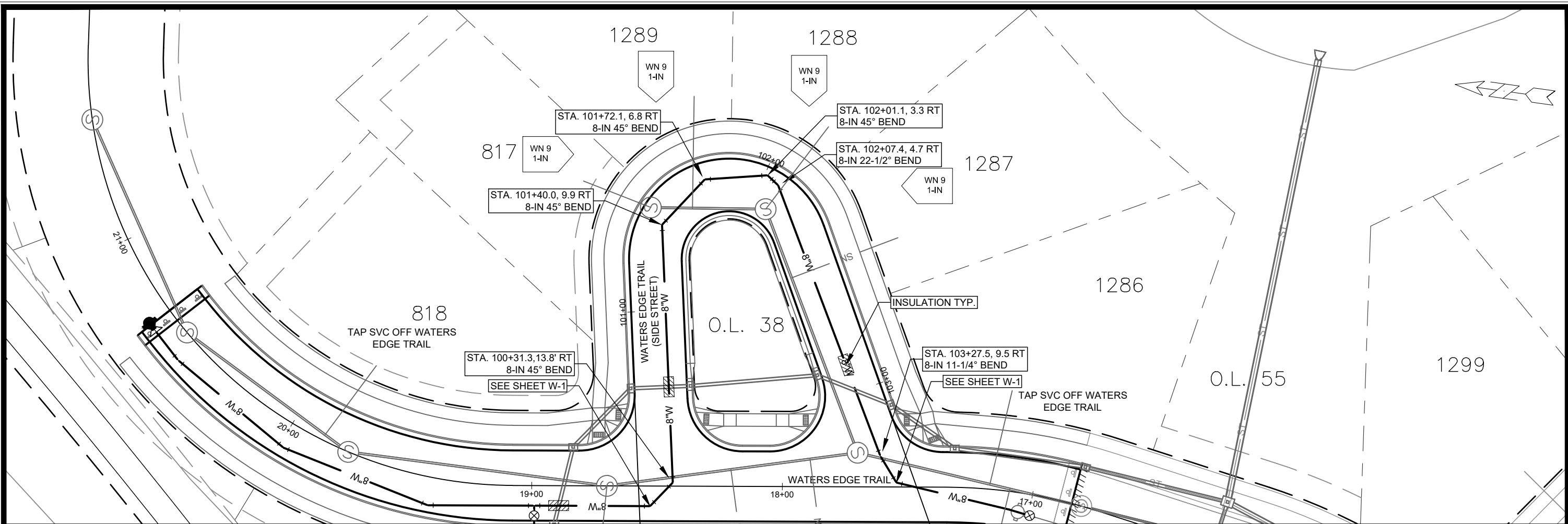
City of Madison Wisconsin logo

Scale: 1" = 40'

DATE: 3/6/2025 7:13 AM

REVISION: TDP

BY: W-1



- GENERAL REQUIREMENTS - WATER MAIN PROFILES:**
- MAINTAIN 6-FT BURY DEPTH UNLESS OTHERWISE INDICATED.
 - INSULATE ALL STORM X-INGS AND AREAS WITH < 5-FT COVER.
 - WM X-INGS OVER SEWERS REQUIRE 6-IN CLEARANCE (MIN.)
 - WM X-INGS UNDER SEWERS REQUIRE 18-IN CLEARANCE (MIN.)

DATE	BY
REVISION	DATE
DESIGNED BY: TDP	DATE: 3/6/2025 7:13 AM
MARK	15445
CONTRACT NO:	9577
PROJECT:	15445
CITY:	MADISON, WI
PROJECT NAME:	VILLAGE AT AUTUMN LAKE PHASE 16
FILE PATH:	M:\DESIGN\Projects\15445\CAD\Water\15445WU-Water.dwg
CITY OF MADISON WISCONSIN	
PROJECT NO:	15445
SHEET NO:	W-2

CONSTRUCTION NOTES:

1. CONSTRUCT NEW WATER MAIN 6.0' BELOW FINISHED GRADE, UNLESS OTHERWISE NOTED. INSULATE MAIN WITH POLYSTYRENE BOARD AT STORM CROSSINGS AND OTHER AREAS IDENTIFIED BY ENGINEER AS HAVING INADEQUATE COVER.
2. VERIFY SIZE OF EXISTING WATER SERVICES AND RECONNECT SERVICES AS INDICATED.
3. MINIMIZE DISRUPTION OF SERVICE TO CUSTOMERS. NOTIFY PER CONTRACT REQUIREMENTS OF ANY PLANNED WATER OUTAGE.

- WN-1 REPLACE THE EXISTING LEAD SERVICE WITH A NEW COPPER SERVICE.
- WN-2 EXTEND AND RECONNECT THE EXISTING COPPER SERVICE TO THE NEW WATER MAIN.
- WN-3 EXISTING SERVICE TO BE ABANDONED WHEN THE WATER MAIN IS CUT OFF.
- WN-4 DISCONNECT FROM THE OLD WATER MAIN AND RECONNECT THE EXISTING COPPER WATER SERVICE LATERAL TO THE NEW WATER MAIN.
- WN-5 RELOCATE THE EXISTING FIRE HYDRANT.
- WN-6 ABANDON WATER VALVE ACCESS STRUCTURE.
- WN-7 FURNISH AND INSTALL THE NEW TOP SECTION FOR THE WATER ACCESS STRUCTURE.
- WN-8 ABANDON THE VALVE BOX.
- WN-9 FURNISH THE DITCH, COMPACTION, AND ALL MATERIALS AND LABOR FOR THE INSTALLATION OF NEW SERVICE LATERAL.
- WN-10 REMOVE AND SALVAGE EXISTING HYDRANT
- WN-11 REPLACE THE EXISTING COPPER SERVICE WITH A COPPER SERVICE
- WN-20+ SEE WATER IMPACT PLAN FOR CONNECTION POINT ISOLATION AND WATER SHUT-OFF NOTIFICATION INFORMATION.

WATER UTILITY ULO SCHEDULE				
ULO	UTILITY	STATION	OFFSET	SHEET

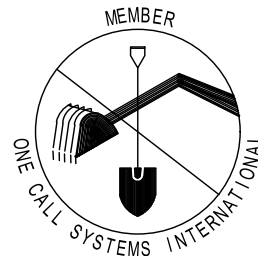
*ESTIMATE OF MATERIALS SUPPLIED BY CONTRACTOR:			
PAY ITEM ID	DESCRIPTION	QUANTITY	UNIT
70002	FURNISH AND INSTALL 6-INCH PIPE & FITTINGS	20	LNFT
70003	FURNISH AND INSTALL 8-INCH PIPE & FITTINGS	600	LNFT
70031	FURNISH AND INSTALL 6-INCH WATER VALVE	1	EACH
70032	FURNISH AND INSTALL 8-INCH WATER VALVE	2	EACH
70040	FURNISH AND INSTALL AND SALVAGE HYDRANT	1	EACH
70050	FURNISH AND INSTALL 1-IN SERVICE LATERALS	12	EACH
70101	FURNISH AND INSTALL STYROFOAM INSUALTION	3	EACH
71123	8-IN 45° BEND	6	EACH
71135	8-IN 22-1/2° BEND	3	EACH
71147	8-IN 11-1/4° BEND	2	EACH
71159	8X6-IN REDUCER	1	EACH
71210	8X6-IN TEE	1	EACH
*ESTIMATE OF MATERIALS SUPPLIED BY WATER UTILITY:			
*ESTIMATE OF MATERIALS SALVAGED:			
70040	SALVAGE HYDRANT	1	EACH

* ESTIMATE OF MATERIALS IS FOR INFORMATION ONLY. ENGINEER DOES NOT GUARANTEE ACCURACY OF MATERIAL TAKE-OFF.

TO OBTAIN LOCATION OF PARTICIPANTS' UNDERGROUND FACILITIES BEFORE YOU DIG IN WISCONSIN

CALL DIGGERS HOTLINE TOLL FREE
811 OR 1-800-242-8511
FAX-A-LOCATE 1-800-338-3860
TDD (FOR HEARING IMPAIRED) 1-800-542-2289

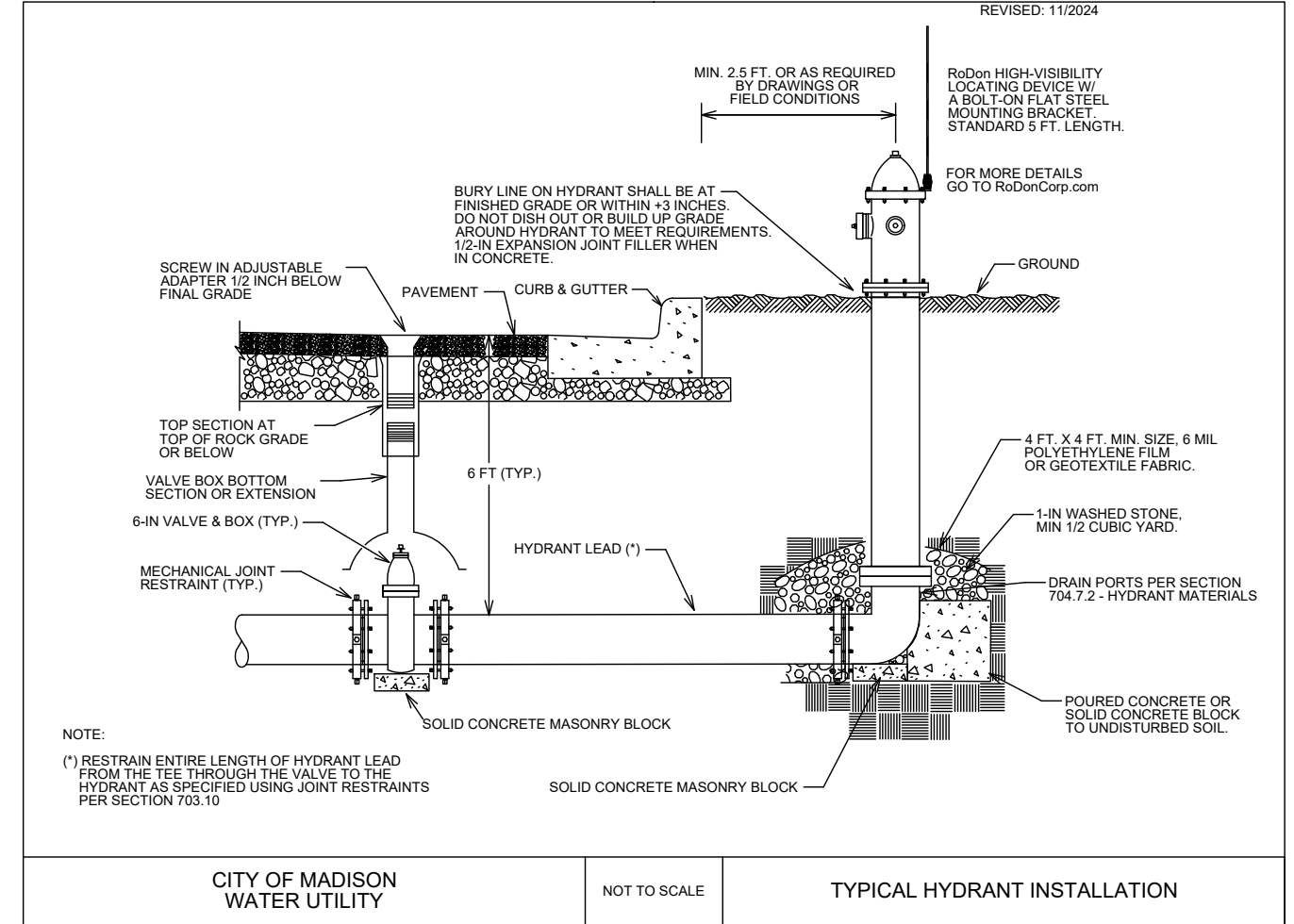
WIS. STATUTE 182.0175 (1974) REQUIRES MIN. OF 3 WORK DAYS NOTICE BEFORE YOU EXCAVATE.



DISCLAIMER NOTE: UTILITY LOCATIONS SHOWN ARE APPROXIMATE ONLY. IT SHALL BE THE CONTRACTOR'S RESPONSIBILITY TO DETERMINE THE EXACT HORIZONTAL AND VERTICAL LOCATION OF ALL EXISTING UNDERGROUND AND OVERHEAD UTILITIES PRIOR TO COMMENCING WORK.

PART VII - WATER MAINS AND SERVICE LATERALS

DETAIL DRAWING NO. 7.04
REVISED: 11/2024



CITY OF MADISON WATER UTILITY

NOT TO SCALE

TYPICAL HYDRANT INSTALLATION

MARK	REVISION	DATE	BY

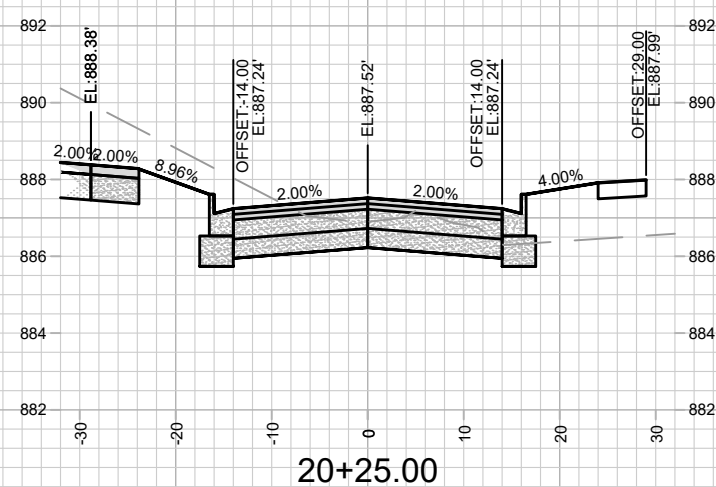
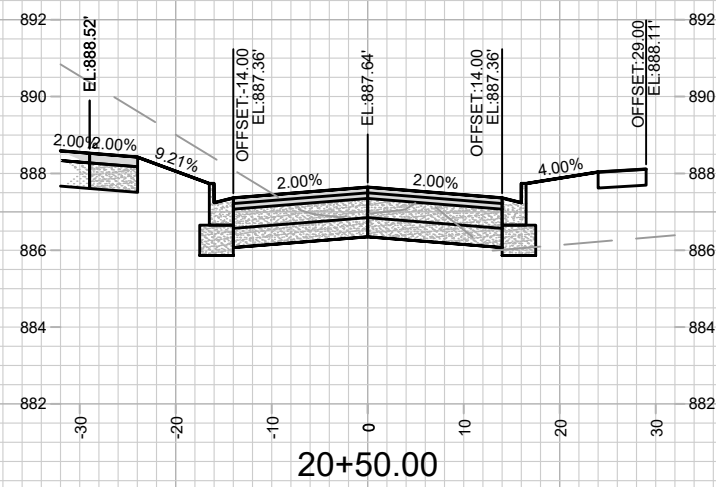
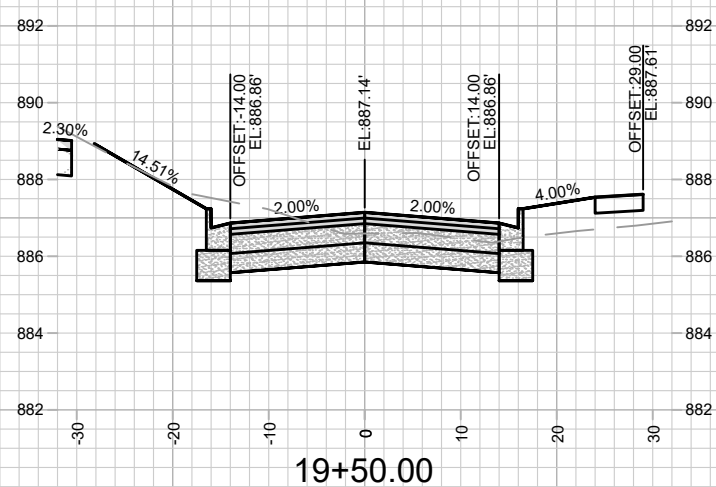
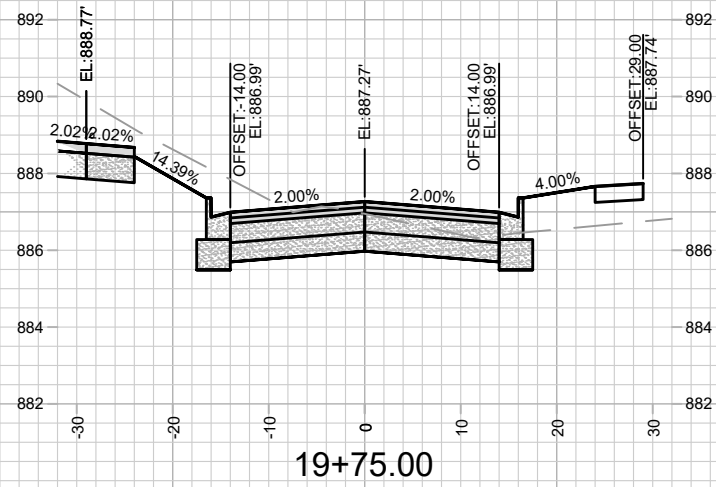
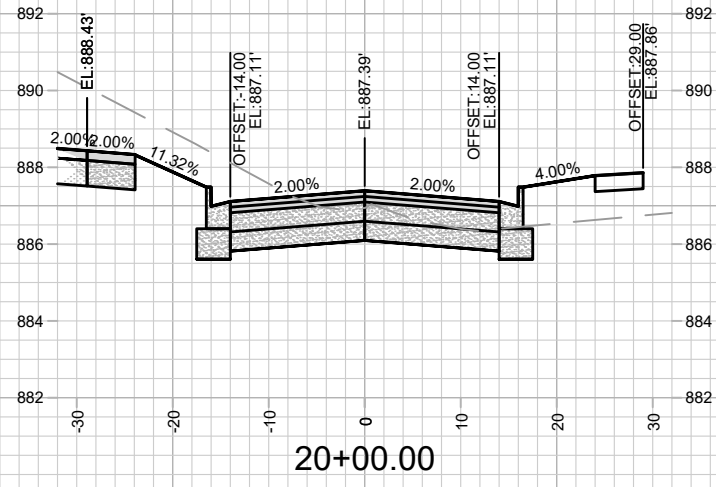
Designed By: TDP Date: 3/6/2025 7:13 AM Scale: N/A W-4

15445
MADISON, WI
9577
CONTRACT NO:

ESTIMATE OF WATER MATERIALS
VILLAGE AT AUTUMN LAKE PHASE 16
M:\DESIGN\Projects\15445\CAD\Water\15445WU-Materials.dwg



15445
W-4



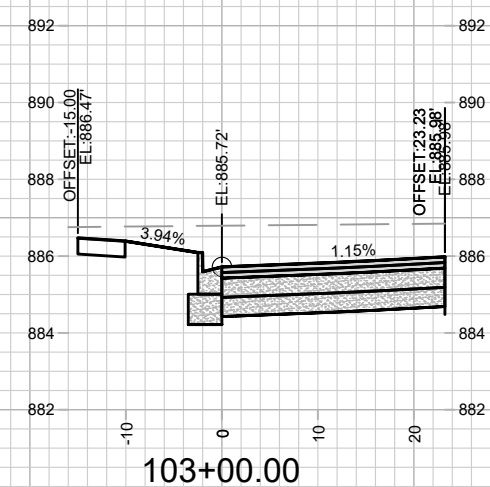
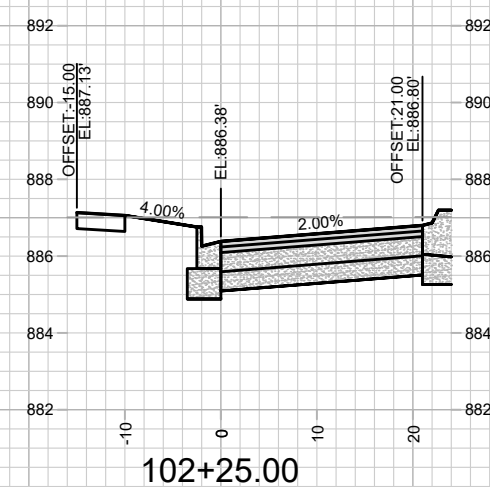
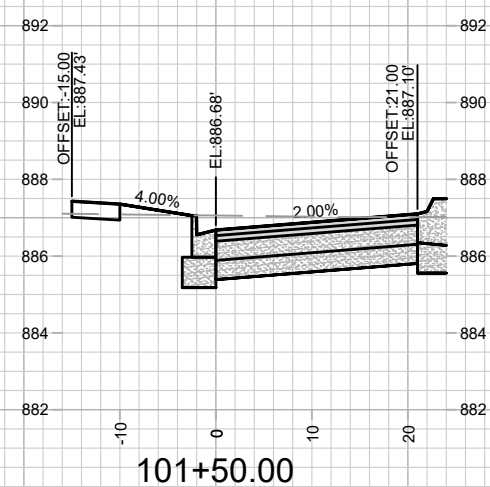
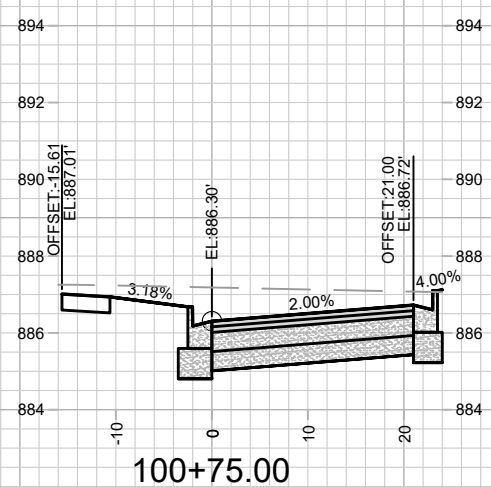
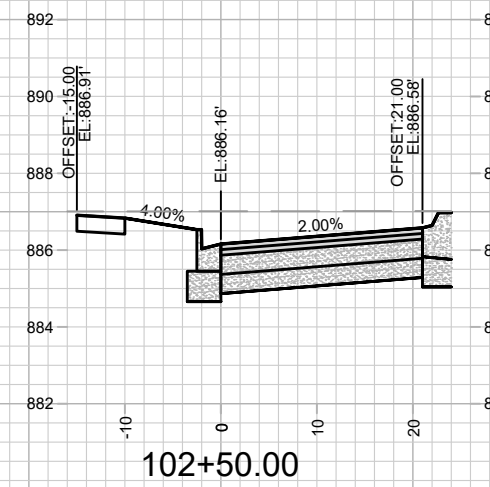
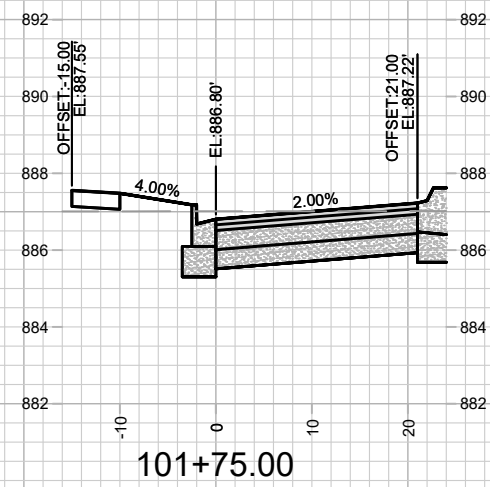
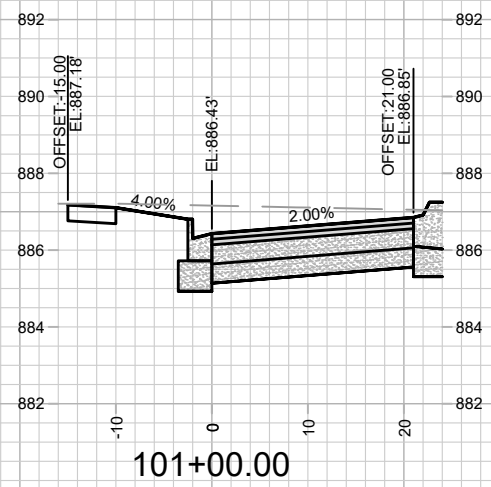
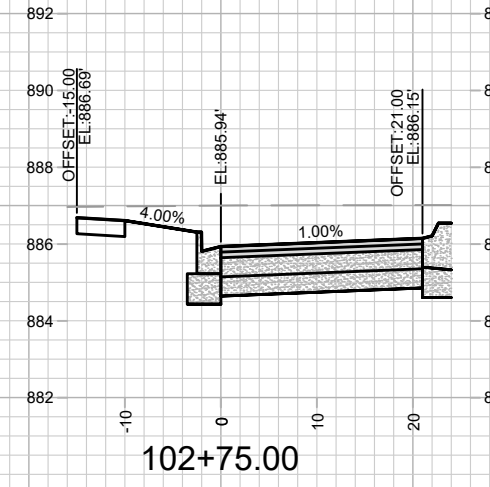
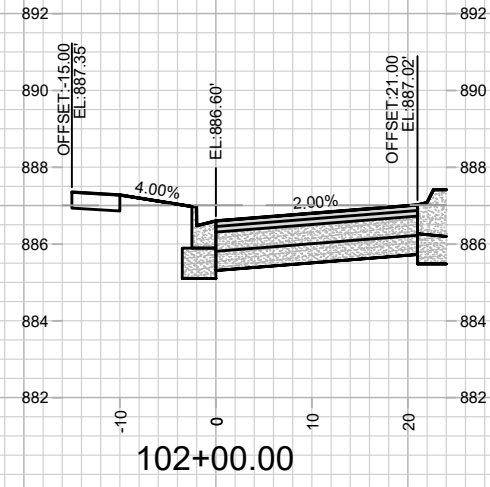
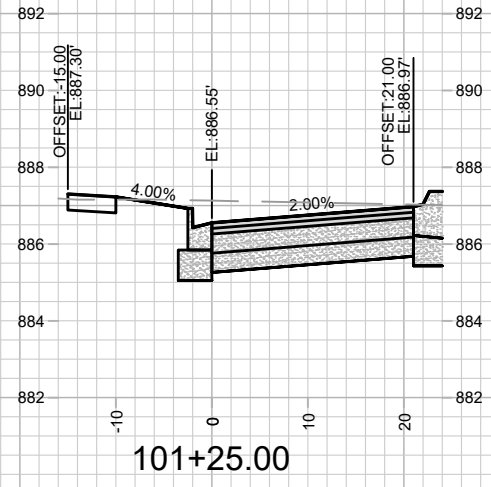
MARK	REVISION	DATE	BY
15445	4/17/2026 3:29 PM		
Designed By: NJ			Scale: 1" = 20'
15445			X-2

15445
MADISON, WI
VILLAGE AT AUTUMN LAKE PHASE 16
CONTRACT NO: 9577



15445
X-2

CROSS SECTIONS - WATERS EDGE TRAIL
VILLAGE AT AUTUMN LAKE PHASE 16
M:\DESIGN\Projects\15445\CAD\Streets\15445EN-Xsections.dwg



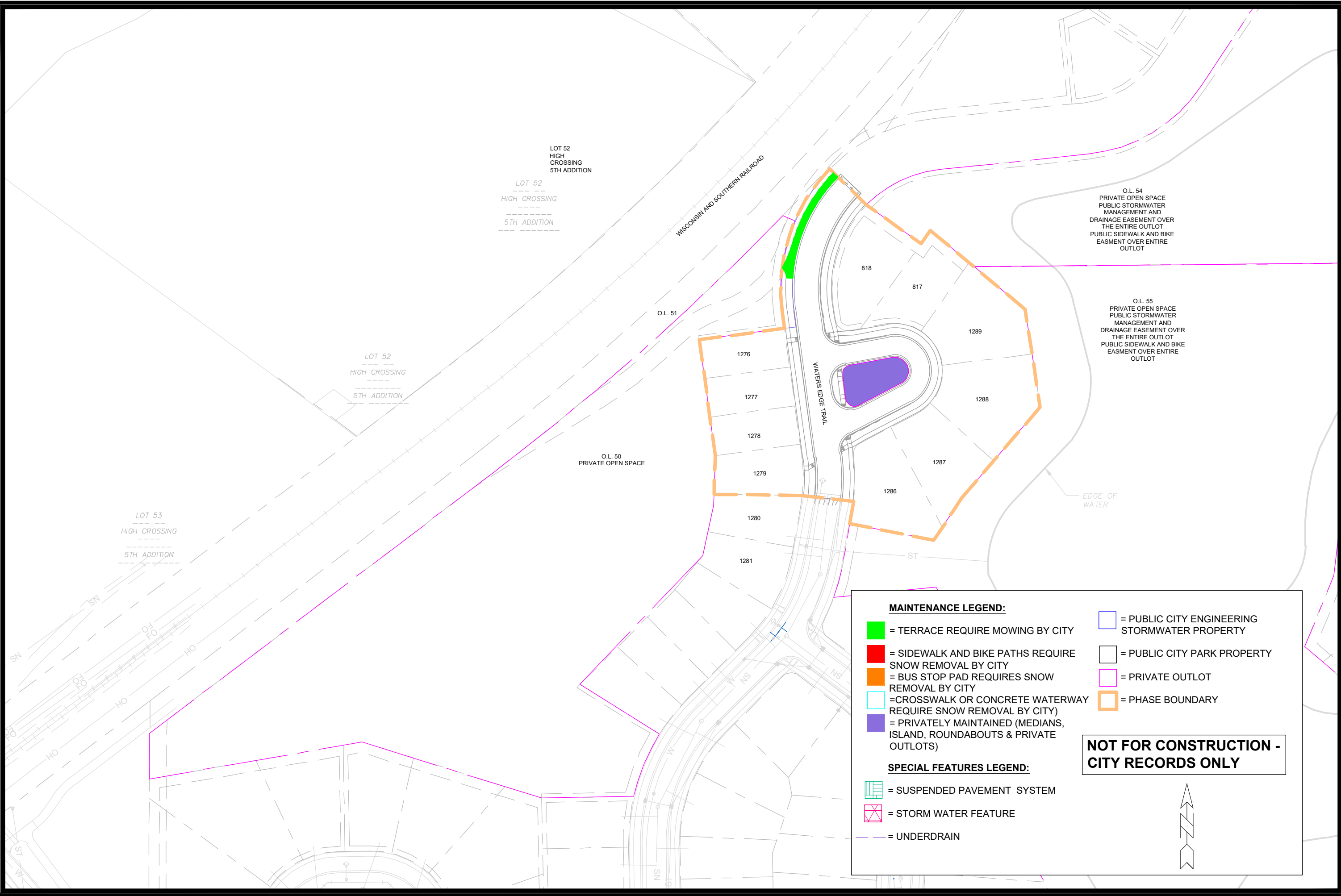
MARK	REVISION	DATE	BY
15445	15445	15445	15445
Designed By: NJJ	Date: 4/17/2026 3:29 PM	Scale: 1" = 20'	X-3

15445
MADISON, WI
9577
CONTRACT NO:

CROSS SECTIONS - WATERS EDGE TRAIL (SIDE STREET)
VILLAGE AT AUTUMN LAKE PHASE 16
M:\DESIGN\Projects\15445\CAD\Streets\15445EN-Xsections.dwg



15445
X-3



MARK	REVISION	DATE	BY
15445	Design/By: NLI	Date: 4/29/2026 2:24 PM	Scale: #####
15445			MN-1

15445
MADISON, WI
9577
CONTRACT NO:

MAINTENANCE PLAN
VILLAGE AT AUTUMN LAKE PHASE 16
M:\DESIGN\Projects\15445\CAD\Streets\15445EN-Maintenance.dwg



15445
MN-1

MAINTENANCE LEGEND:

- = TERRACE REQUIRE MOWING BY CITY
- = SIDEWALK AND BIKE PATHS REQUIRE SNOW REMOVAL BY CITY
- = BUS STOP PAD REQUIRES SNOW REMOVAL BY CITY
- = CROSSWALK OR CONCRETE WATERWAY REQUIRE SNOW REMOVAL BY CITY
- = PRIVATELY MAINTAINED (MEDIANS, ISLAND, ROUNDABOUTS & PRIVATE OUTLOTS)
- = PUBLIC CITY ENGINEERING STORMWATER PROPERTY
- = PUBLIC CITY PARK PROPERTY
- = PRIVATE OUTLOT
- = PHASE BOUNDARY

SPECIAL FEATURES LEGEND:

- = SUSPENDED PAVEMENT SYSTEM
- = STORM WATER FEATURE
- = UNDERDRAIN

NOT FOR CONSTRUCTION - CITY RECORDS ONLY