

Madison, Wisconsin

CITY OF MADISON

CITY ENGINEERING DIVISION

DEPARTMENT OF PUBLIC WORKS

PLAN OF PROPOSED IMPROVEMENT

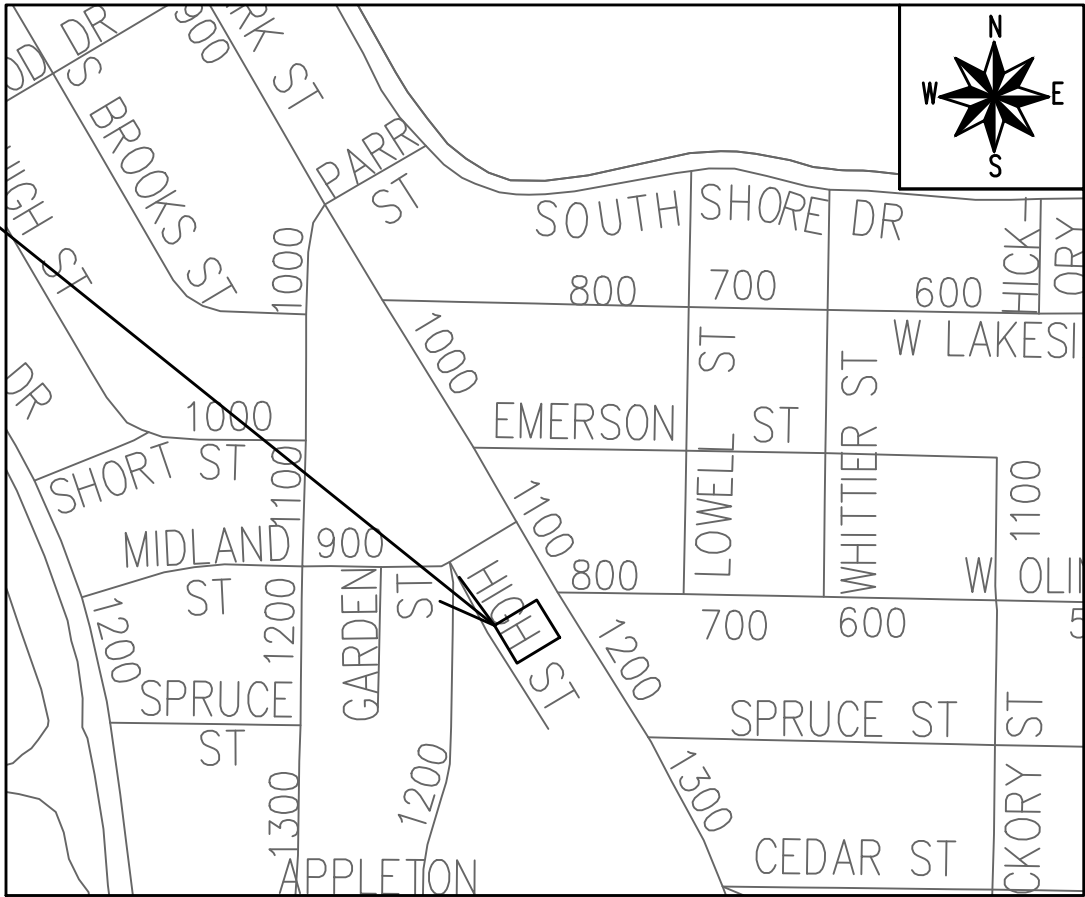
INDEX OF SHEETS

SHEET NO.	D1	STANDARD NOTES
SHEET NO.	D2	TYPICAL SECTION
SHEET NO.	P1-P3	PLAN & PROFILE
SHEET NO.	U1	UTILITIES PLAN
SHEET NO.	L1	LANDSCAPING PLAN
SHEET NO.	X1-X3	CROSS SECTIONS
NO MAINTENANCE PLAN REQUIRED		

1150 S PARK ST

CITY PROJECT NO. 15478
CONTRACT NO. 9597

PROJECT
LOCATION



PUBLIC IMPROVEMENT PROJECT
APPROVED

JANUARY 14, 2025

BY THE COMMON COUNCIL
OF MADISON, WISCONSIN

PUBLIC IMPROVEMENT DESIGN
APPROVED BY:

06/10/2025

City Engineer

Date

STREET
DESIGNED BY:



06/10/2025

SANITARY & STORM SEWER
DESIGNED BY:

LATERAL ONLY

WATER
DESIGNED BY:

LATERAL ONLY

PLOT SCALE: 1:1_XREF

PLOT NAME: ---

REV. DATE: 4/9/2025 3:06 PM

ORIGINATOR: CITY_OF_MADISON

THE LOCATION AND INFORMATION FOR PROPOSED NEW TREES, IN THE PUBLIC RIGHT OF WAY OR ON PUBLIC LANDS ARE APPROXIMATE AND ARE SHOWN FOR REFERENCE ONLY. THE LOCATIONS, SPECIFICATIONS AND PLANTING METHODS OF ALL PROPOSED NEW OR REPLACEMENT TREES IN THE PUBLIC RIGHT OF WAY OR ON PUBLIC LANDS SHALL BE APPROVED BY THE CITY FORESTER PRIOR TO INSTALLATION.

NO TREES IN THE RIGHT OF WAY OR ON PUBLIC LANDS SHALL BE TRIMMED, PRUNED, REMOVED OR ADVERSELY AFFECTED IN ANY WAY UNTIL THE DEVELOPER HAS RECEIVED WRITTEN PERMISSION FROM THE CITY ENGINEER OR CITY FORESTER. SAID WRITTEN PERMISSION SHALL INCLUDE LANGUAGE INDICATING THAT SECTION 10.101 OF THE MADISON GENERAL ORDINANCES AND ADMINISTRATIVE PROCEDURE MEMORANDUM NO. 6-2, REFERRING TO NOTIFICATION OF PROPERTY OCCUPANTS AND/OR OWNERS, HAS BEEN COMPLIED WITH.

DEVELOPER MUST SUBMIT A TRAFFIC CONTROL PLAN TO CITY TRAFFIC ENGINEERING AT LEAST 14 DAYS PRIOR TO THE START OF WORK. WORK SHALL NOT PROCEED UNTIL AN APPROVED TRAFFIC CONTROL PLAN IS IN PLACE.

CONTACT THE PROJECT ENGINEER AND DESIGNER, GRECIA IZQUIERDO TORRES, AT GIZQUIERDO@CITYOFMADISON.COM FOR CAD FILES AND ALIGNMENT DATA PRIOR TO STAKING.

CONTACT THE CITY CONSTRUCTION ENGINEER, KYLE FRANK, AT KFRANK@CITYOFMADISON.COM FOR PRECONSTRUCTION SCHEDULING, COORDINATION, AND INSPECTION.

CONVENTIONAL SIGNS

FIELD VERIFY ALL UTILITY LOCATIONS

GAS

STORM SEWER

SANITARY SEWER

WATER

BURIED ELECTRIC

OVERHEAD ELECTRIC

POWER POLE

ADA COMPLIANT RAMP W/
DETECTABLE WARNING FIELD

COMBUSTIBLE FLUIDS

— G —

— ST —

— SAN —

— W —

— E —

— OH —

UNDERDRAINS SHALL BE INSTALLED PER STANDARD DETAIL DRAWING 4.05 FOR 75' ON EACH SIDE OF THE LOW POINT, OR TO THE NEAREST CURB HIGH POINT. ALL UNDERDRAIN SHALL BE WRAPPED.

ALL GUTTERS SHALL DRAIN WITH A MINIMUM GRADE OF 0.5% TOWARD STORM SEWER INLETS.

ALL DITCHES SHALL DRAIN WITH A MINIMUM GRADE OF 0.5%

THE CROSS SLOPE OF SIDEWALKS AND BARRIER FREE SIDEWALK CURB RAMPS SHALL TYPICALLY BE 1.5%. THE LONGITUDINAL GRADE OF BARRIER FREE SIDEWALK CURB RAMPS SHALL NOT EXCEED 8.33%. ALL SIDEWALK RAMPS SHALL BE CONSTRUCTED ACCORDING TO S.D.D. 3.04. AT ALL OTHER LOCATIONS THE LONGITUDINAL GRADE OF SIDEWALKS SHALL NOT EXCEED 5.0 % OR THE ADJACENT STREET GRADE WHICHEVER IS GREATER NOR BE LESS THAN 0.5% AND SHALL DRAIN TOWARD STORM SEWER INLETS. SIDE SLOPES WITHIN TEN FEET OF A PUBLIC SIDEWALK SHALL NOT EXCEED 4:1. ALL SIDEWALK AND SIDEWALK RAMP ELEVATIONS AND GRADES SHALL BE FIELD VERIFIED AND SET TO COMPLY WITH THE CITY OF MADISON STANDARD SPECIFICATIONS AND THE A.D.A. GUIDELINES.

OBTAIN A PRINT OUT OF THE ALIGNMENTS FROM THE CITY PROJECT ENGINEER PRIOR TO STAKING THIS PROJECT. THE CITY PROJECT ENGINEER IS GRECIA IZQUIERDO TORRES, EMAIL: GIZQUIERDO@CITYOFMADISON.COM

CURB STATION AND OFFSETS SHALL BE TO THE EDGE OF PAVEMENT UNLESS OTHERWISE INDICATED. CURB ELEVATIONS SHALL BE TO THE EDGE OF PAVEMENT UNLESS OTHERWISE INDICATED.

POWER POLES AND OTHER OBSTRUCTIONS SHALL BE MOVED TO PROVIDE 2 FEET MINIMUM OF CLEAR DISTANCE FROM ANY FACE OF CURB OR EDGE OF SIDEWALK UNLESS OTHERWISE INDICATED ON THE PLANS.

ANY INFORMATION SHOWN ON THIS PLAN, WHICH IS NOT PART OF THIS RIGHT-OF-WAY PROJECT, IS PRELIMINARY AND NOT FOR CONSTRUCTION.

THERE MAY BE EXISTING UTILITIES OR OTHER FEATURES WHICH ARE EITHER NOT SHOWN OR SHOWN INCORRECTLY ON THIS PLAN. IT IS THE RESPONSIBILITY OF THE DEVELOPER TO LOCATE AND IDENTIFY ALL UTILITIES AND TOPOGRAPHY WHICH MAY AFFECT THE CONSTRUCTION OF THESE IMPROVEMENTS.

ALL PERMANENT SIGNING AND POSTING WILL BE DETERMINED AND PROVIDED BY THE TRAFFIC ENGINEERING DIVISION, FOLLOWING CONSTRUCTION OF THESE IMPROVEMENTS.

THE DEVELOPER SHALL PROVIDE, INSTALL AND MAINTAIN ALL STREET END BARRICADES, SIGNING AND TRAFFIC CONTROL, AS REQUIRED BY THE CITY TRAFFIC ENGINEER.

PAVEMENT SAWCUTS SHALL BE AS DIRECTED BY THE CITY CONSTRUCTION ENGINEER. SAWCUTS SHOWN ON THE PLAN ARE APPROXIMATE.

CURB ON CUL DE SACS SHALL BE INSTALLED ACCORDING TO S.D.D 3.05.

ALL WORK IN THE RIGHT OF WAY AND PUBLIC EASEMENTS SHALL BE IN ACCORDANCE WITH THE CITY OF MADISON STANDARD SPECIFICATIONS FOR PUBLIC WORKS CONSTRUCTION LATEST EDITION.

ALL PROPOSED IMPROVEMENTS IN THE RIGHT-OF-WAY ARE BASED ON SURVEY DATA PROVIDED BY THE DEVELOPER OR ITS CONSULTANT. IN THE CASE THAT THE PROPOSED IMPROVEMENTS CAN NOT BE INSTALLED PER THESE PLANS OR THE CITY OF MADISON STANDARD SPECIFICATION FOR PUBLIC WORKS CONSTRUCTION, LATEST EDITION, THE DEVELOPER SHALL BE RESPONSIBLE FOR THE COST OF EXTRA WORK DUE TO INACCURACIES OF THE SURVEY.

ALL UTILITY VERIFICATIONS AND ACCURACY OF THE DRAWINGS ARE THE RESPONSIBILITY OF THE DEVELOPER. ANY CONFLICTS THAT ARISE FROM MISSING OR ERRONEOUS INFORMATION WILL BE AT THE EXPENSE OF THE DEVELOPER. NO PRECAST STRUCTURES WILL BE APPROVED FOR STORM OR SANITARY SEWER UNTIL ALL POTENTIAL UTILITY CONFLICTS ARE RESOLVED.

ALL TERRACE EXCAVATIONS FOR NEW TREE PLANTINGS SHALL BE ACCORDING TO S.D.D. 2.18

IN LOCATIONS WHERE PAVEMENT RESTORATION IS NOT IDENTIFIED ADJACENT TO CURB AND GUTTER REPLACEMENT, IT IS ASSUMED THAT CURB AND GUTER WILL BE REPLACED WITHOUT DAMAGING ADJACENT PAVEMENT. IF DAMAGED, THE PAVEMENT SHALL BE RESTORED AS NECESSARY TO MEET THE STANDARD PATCHING CRITERIA. RESTORATION LIMITS TO BE DETERMINED BY CITY CONSTRUCTION ENGINEER.

15478

MADISON, WI

9597

CONTRACT NO.:

STANDARD NOTES

1150 S PARK ST

M:\DESIGN\Projects\15478\CAD\Streets\15478EN-Details.dwg

15478

D-1

MARK

REFUSION

DATE

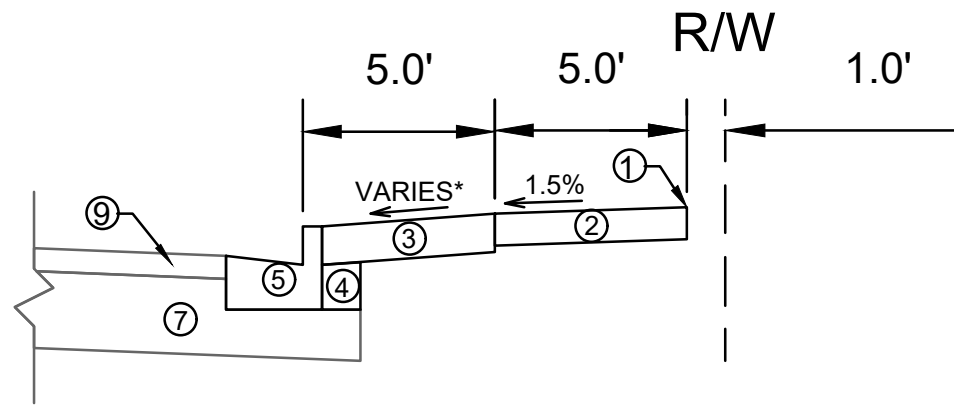
BY

15478

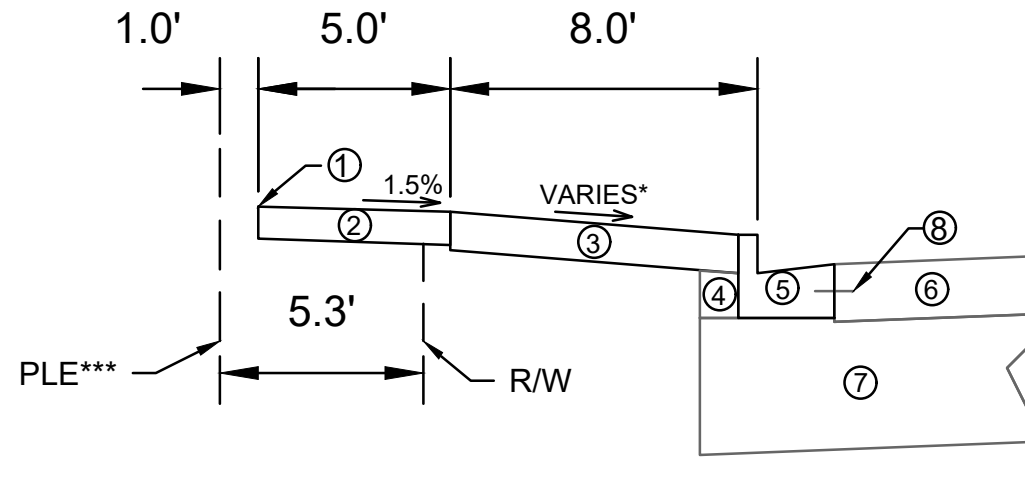
07/27/2025 6:54 AM

Scale

D-1



TYPICAL SECTION
HIGH ST

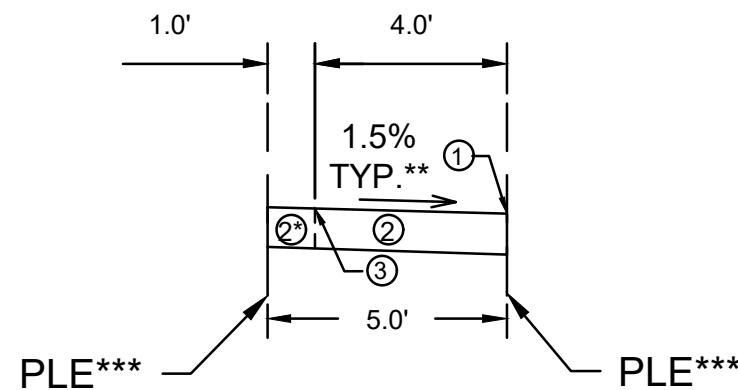


TYPICAL SECTION
S PARK ST

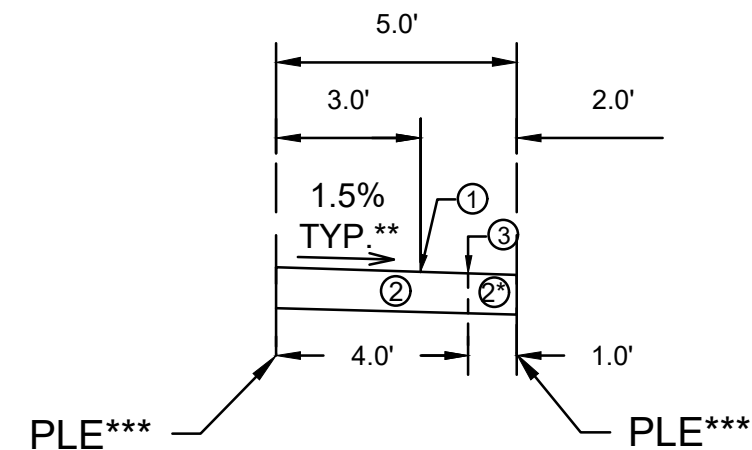
SPECIAL NOTES:

- * SEE X-SHEETS AND P-SHEETS FOR CROSS SECTIONS AND SLOPES
- ** ANY CURB REPLACEMENT SHALL INCLUDE TIE BARS INTO THE ADJACENT CONCRETE PAVEMENT IN ACCORDANCE WITH THE CITY OF MADISON S.D.D. 3.10
- *** SEE DOC. NO. 6024208 FOR PLE LOCATION

- ① POINT REFERRED TO ON PROFILE
- ② 5" CONCRETE SIDEWALK
- ③ 6" TOPSOIL, SEED, AND MATTING
- ④ EXISTING FILL TO REMAIN, INSTALL AT CURB REPLACEMENT LOCATIONS
- ⑤ EXISTING CURB TYPE A, REPLACE AT LOCATIONS SHOWN IN P-SHEETS OR AS DETERMINED BY THE CONSTRUCTION ENGINEER**
- ⑥ EXISTING CONCRETE PAVEMENT TO REMAIN
- ⑦ EXISTING ROAD BASE TO REMAIN
- ⑧ EXISTING TIE BAR
- ⑨ EXISTING ASPHALT PAVEMENT TO REMAIN



TYPICAL SECTION
SIDEWALK EASEMENT
STA 30+10.00 TO STA 31+03.37



TYPICAL SECTION
SIDEWALK EASEMENT
STA 31+03.37 TO STA 31+42.89

SPECIAL NOTES:

- * 1' WIDE MAINTENANCE STRIP
- ** SEE X-SHEETS AND P-SHEETS FOR CROSS SECTIONS AND SLOPES
- *** SEE DOC NO. 6024208 FOR PLE LOCATION

- ① POINT REFERRED TO ON PROFILE
- ② 5" CONCRETE SIDEWALK
- ③ CONCRETE JOINT

MARK	REVISION	DATE	BY
15478	15478	6/27/2025 6:54 AM	15478

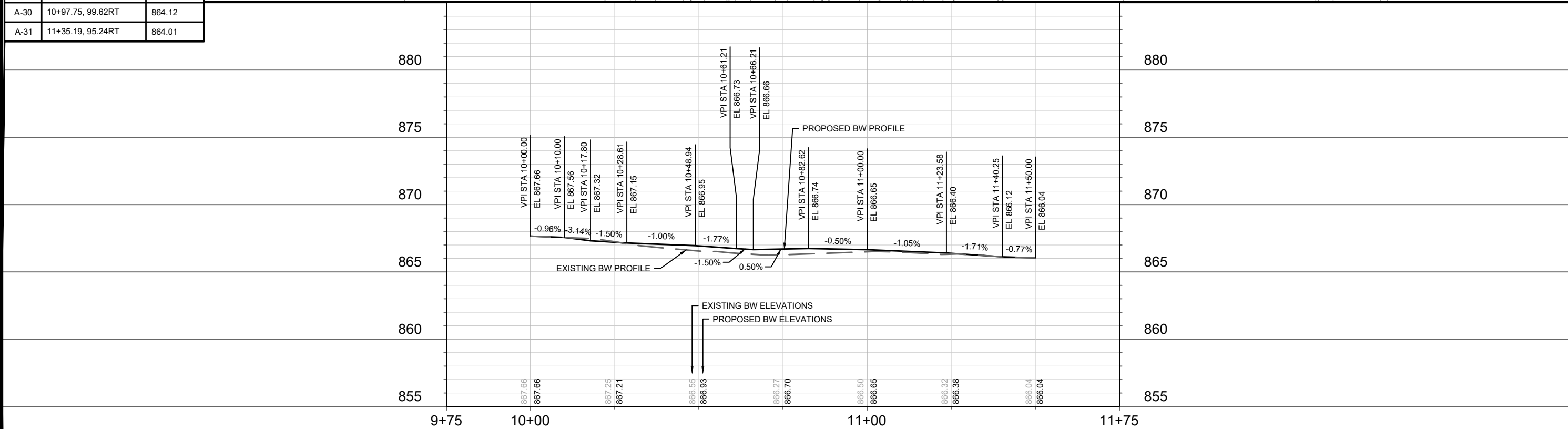
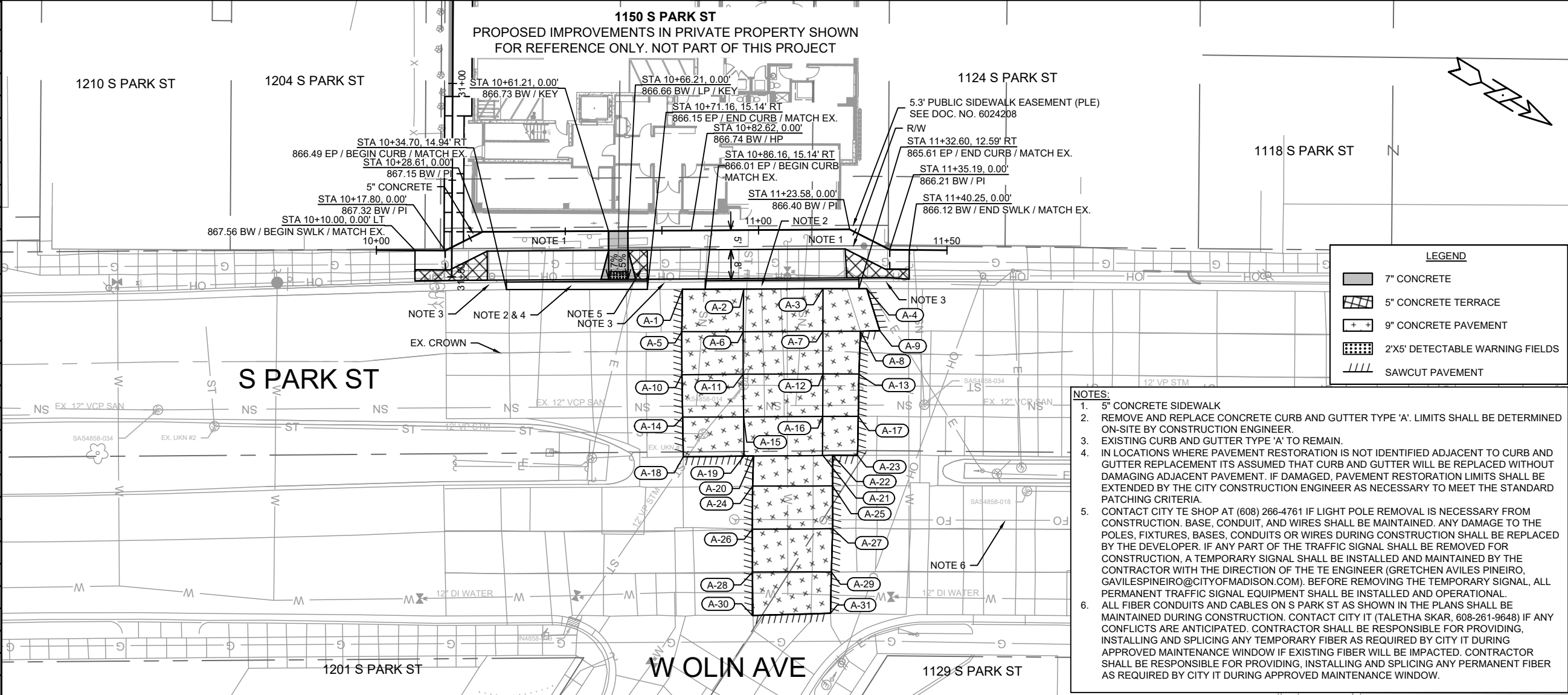
15478
MADISON, WI
CONTRACT NO: 9597

TYPICAL SECTIONS
1150 S PARK ST
M:\DESIGN\Projects\15478\CAD\Streets\15478EN-Details.dwg



15478
D-2

CONCRETE JOINTS		
POINT	STATION AND OFFSET	ELEVATION
A-1	10+80.22, 15.18RT	866.07
A-2	10+96.05, 15.30RT	865.92
A-3	11+16.58, 15.28RT	865.72
A-4	11+34.44, 11.67RT	865.59
A-5	10+79.98, 26.13RT	866.22
A-6	10+95.85, 26.27RT	866.05
A-7	11+16.48, 26.27RT	865.82
A-8	11+35.19, 22.40RT	865.69
A-9	11+35.19, 21.10RT	865.61
A-10	10+79.94, 37.28RT	866.28
A-11	10+95.78, 37.24RT	866.14
A-12	11+34.27, 36.44RT	865.88
A-13	11+35.19, 33.12RT	865.69
A-14	10+80.05, 48.23RT	866.25
A-15	10+95.84, 48.27RT	866.01
A-16	11+35.19, 46.45RT	865.76
A-17	11+35.19, 43.84RT	865.60
A-18	10+80.15, 58.50RT	866.06
A-19	10+95.84, 58.41RT	865.84
A-20	10+98.33, 58.39RT	865.82
A-21	11+35.19, 55.84RT	865.64
A-22	11+35.19, 55.12RT	865.61
A-23	11+35.19, 53.85RT	865.52
A-24	10+98.03, 66.19RT	865.60
A-25	11+35.19, 62.81RT	865.45
A-26	10+97.90, 77.33RT	865.18
A-27	11+35.19, 73.61RT	865.01
A-28	10+97.90, 88.39RT	864.70
A-29	11+35.19, 84.69RT	864.53
A-30	10+97.75, 99.62RT	864.12
A-31	11+35.19, 95.24RT	864.01



15478

MADISON, WI

CONTRACT NO: 9597

PLAN & PROFILE - S PARK ST

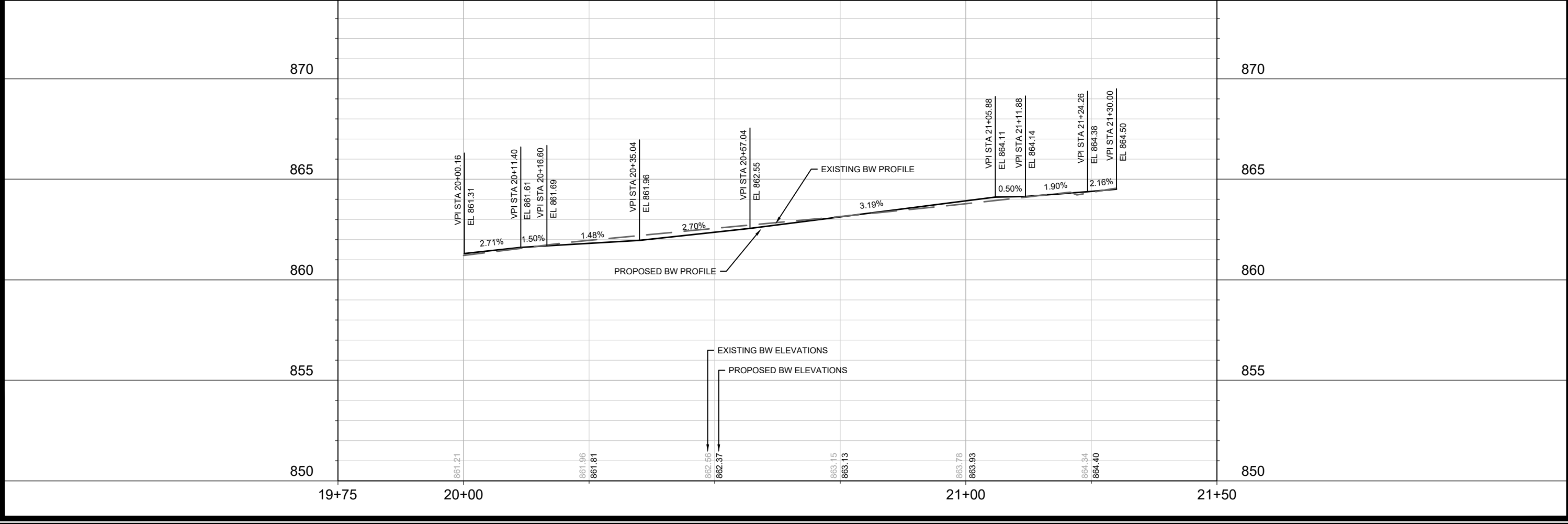
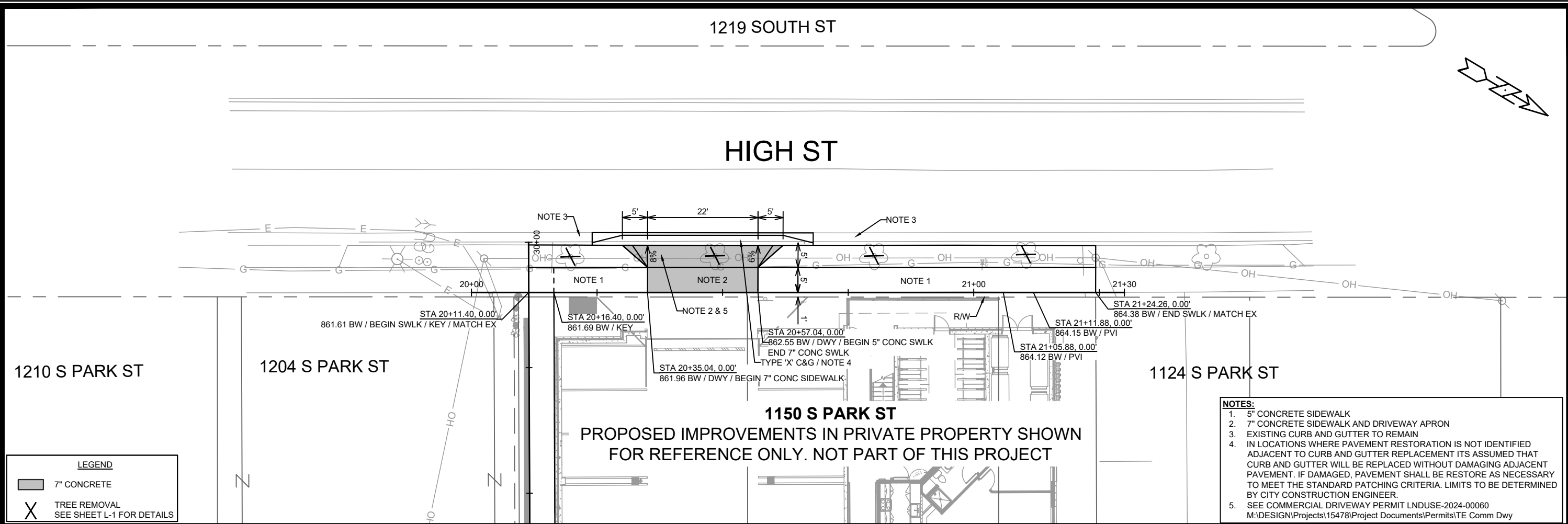
1150 S PARK ST

M:\DESIGN\Projects\15478\CAD\Streets\15478EN-PnP.dwg

15478

P-1

MARK	REVISION	DATE	BY
15478		06/20/2025 11:52 AM	P-1



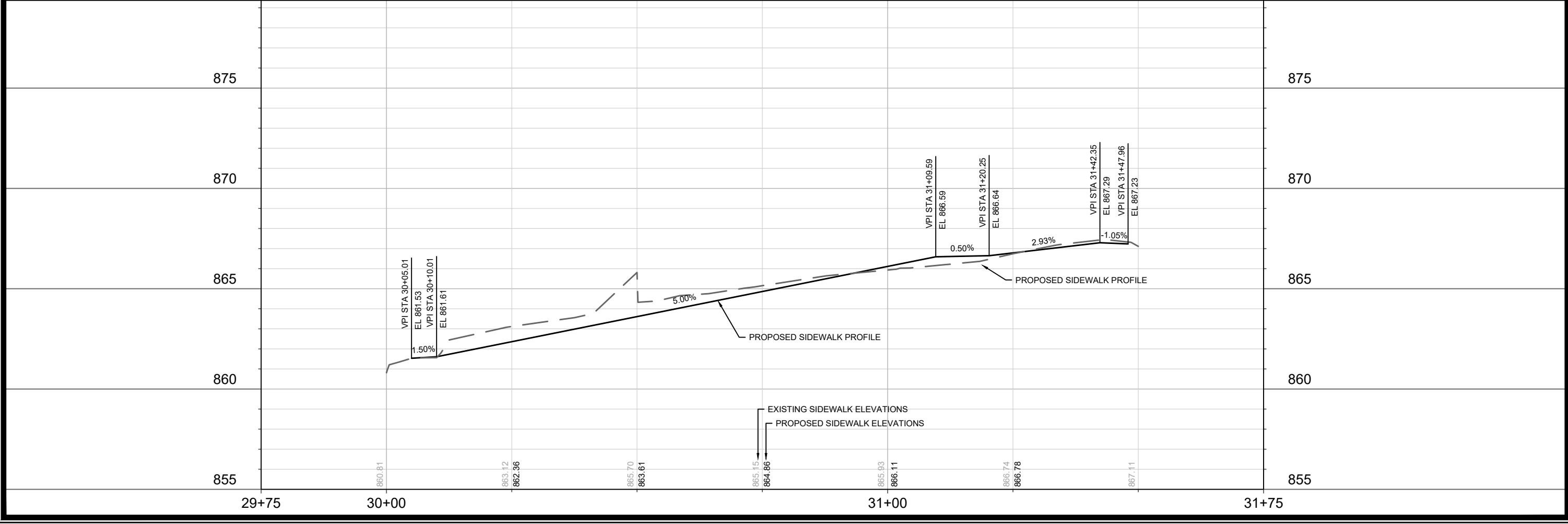
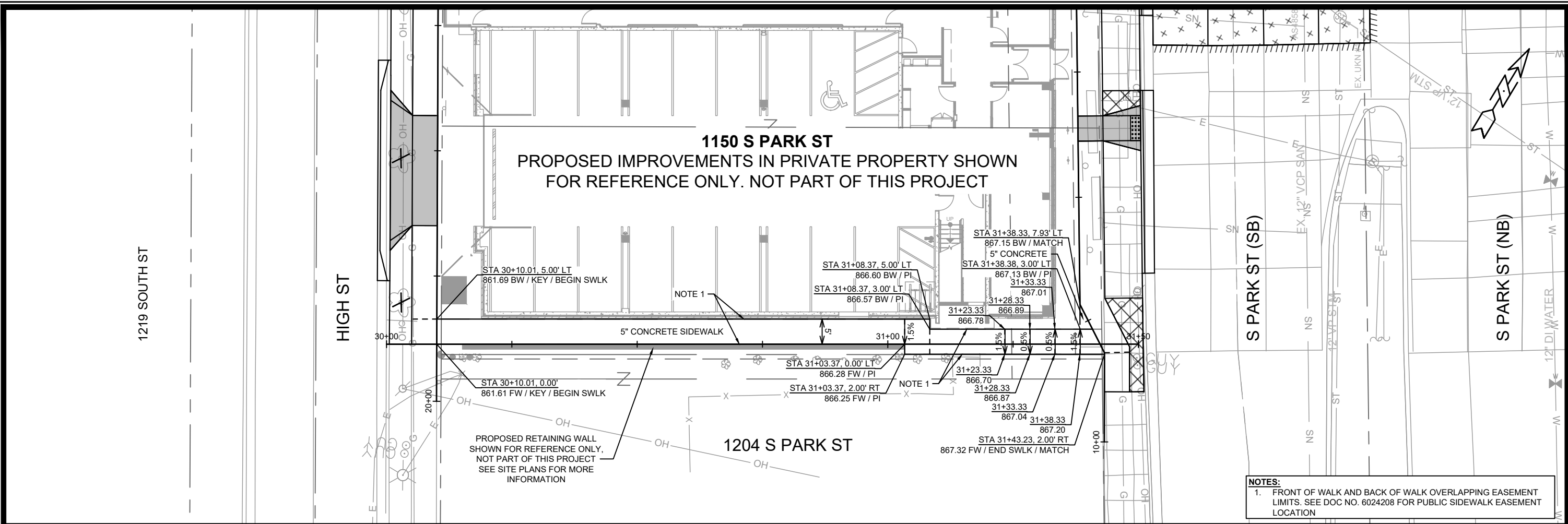
MARK	REVISION	DATE	BY
15478	15478	11/13/25	P-2

15478
MADISON, WI
9597
CONTRACT NO:

PLAN & PROFILE - HIGH ST
1150 S PARK ST

M:\DESIGN\Projects\15478\CAD\Streets\15478EN-PnP.dwg

15478
P-2



NOTES:
1. FRONT OF WALK AND BACK OF WALK OVERLAPPING EASEMENT LIMITS. SEE DOC NO. 6024208 FOR PUBLIC SIDEWALK EASEMENT LOCATION

15478		15478		15478	
MADISON, WI		MADISON, WI		MADISON, WI	
1150 S PARK ST		1150 S PARK ST		1150 S PARK ST	
CONTRACT NO: 9597		CONTRACT NO: 9597		CONTRACT NO: 9597	
15478		15478		15478	
P-3		P-3		P-3	

PLAN & PROFILE - SIDEWALK EASEMENT

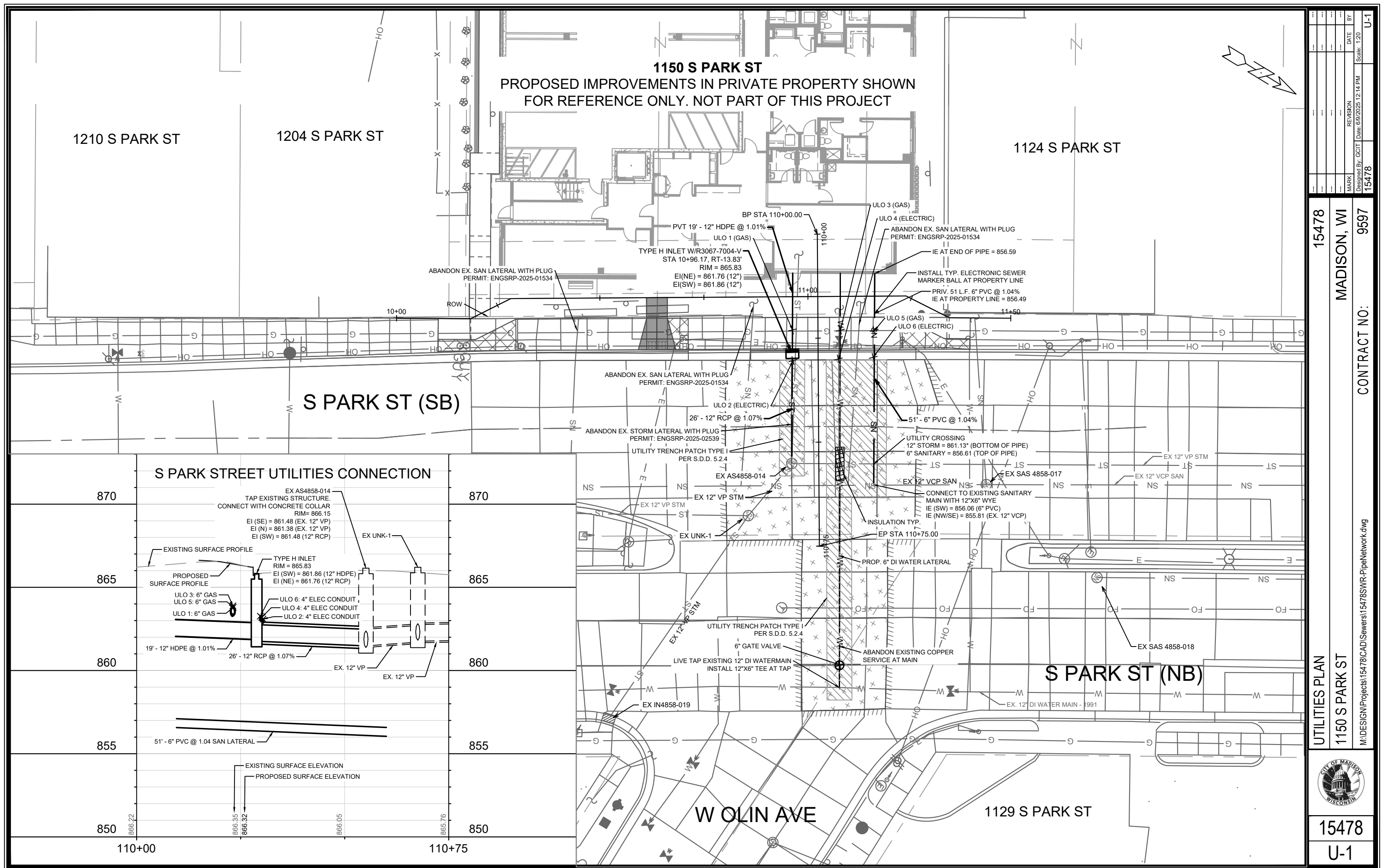
1150 S PARK ST

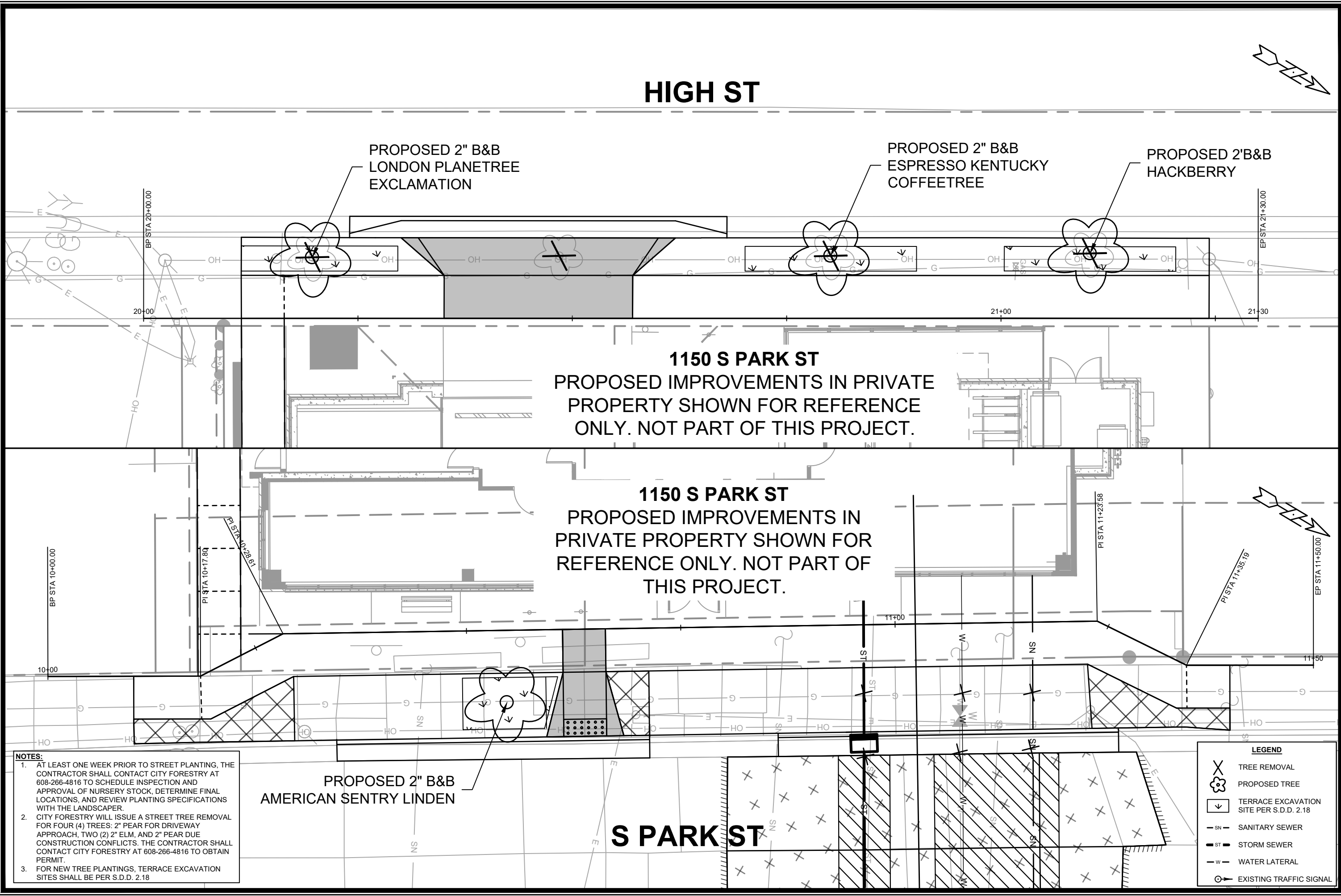
15478

P-3

M:\DESIGN\Projects\15478\CAD\Streets\15478EN-PnP.dwg

City of Madison Wisconsin



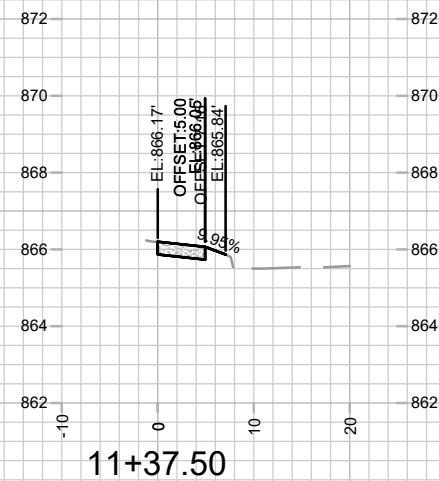
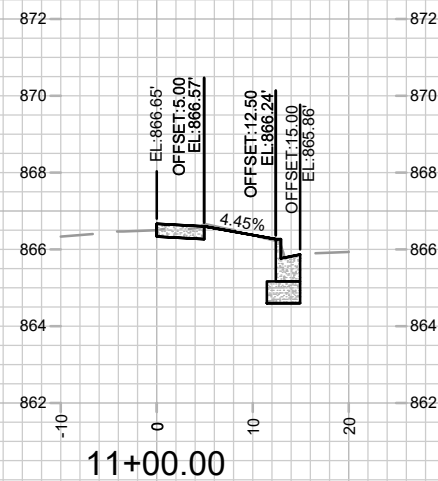
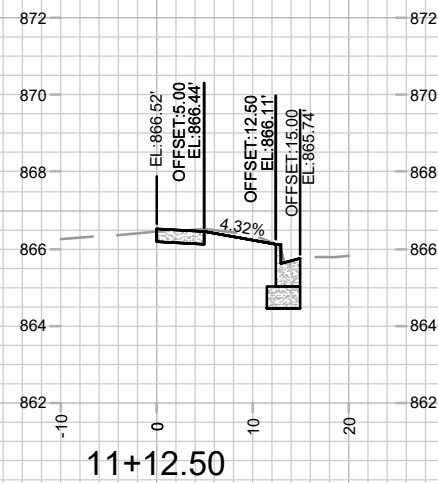
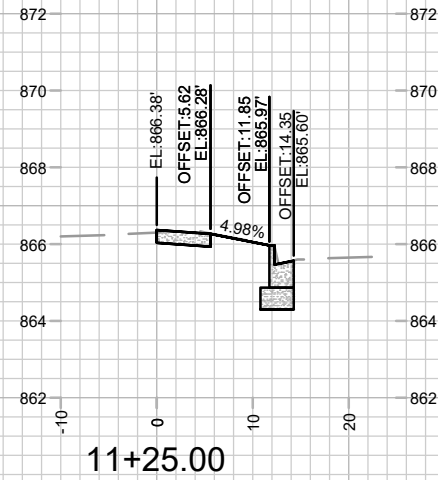
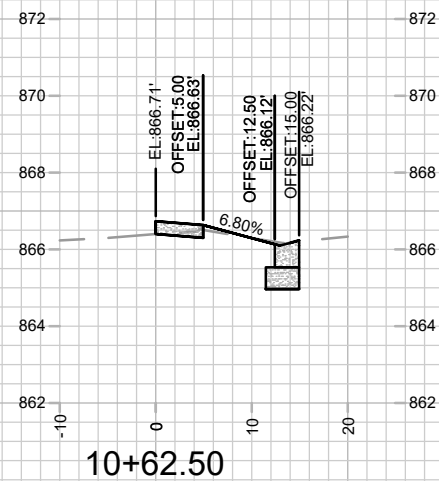
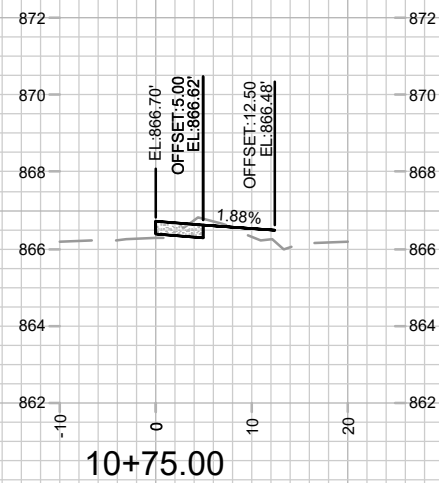
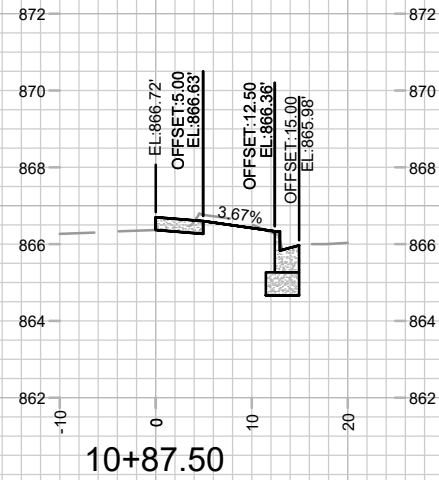
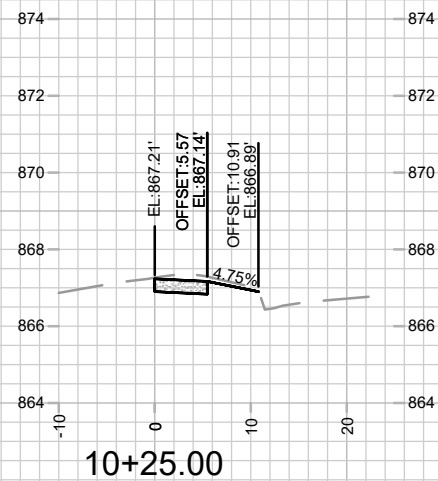
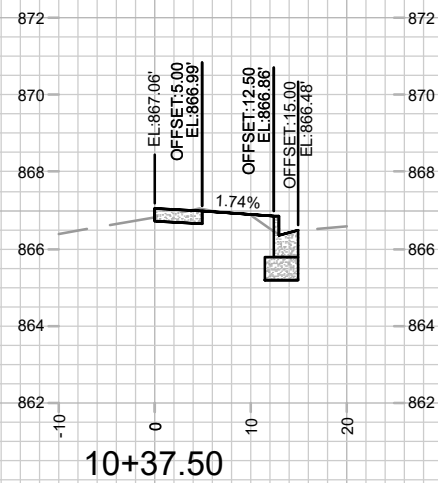
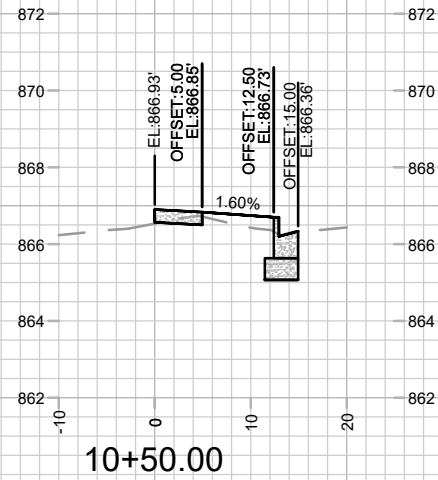



- NOTES:**
1. AT LEAST ONE WEEK PRIOR TO STREET PLANTING, THE CONTRACTOR SHALL CONTACT CITY FORESTRY AT 608-266-4816 TO SCHEDULE INSPECTION AND APPROVAL OF NURSERY STOCK, DETERMINE FINAL LOCATIONS, AND REVIEW PLANTING SPECIFICATIONS WITH THE LANDSCAPER.
 2. CITY FORESTRY WILL ISSUE A STREET TREE REMOVAL FOR FOUR (4) TREES: 2" PEAR FOR DRIVEWAY APPROACH, TWO (2) 2" ELM, AND 2" PEAR DUE CONSTRUCTION CONFLICTS. THE CONTRACTOR SHALL CONTACT CITY FORESTRY AT 608-266-4816 TO OBTAIN PERMIT.
 3. FOR NEW TREE PLANTINGS, TERRACE EXCAVATION SITES SHALL BE PER S.D.D. 2.18

LEGEND

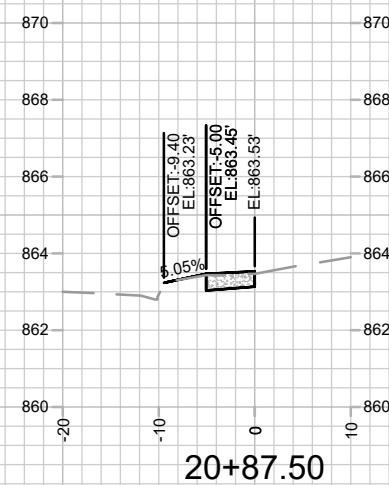
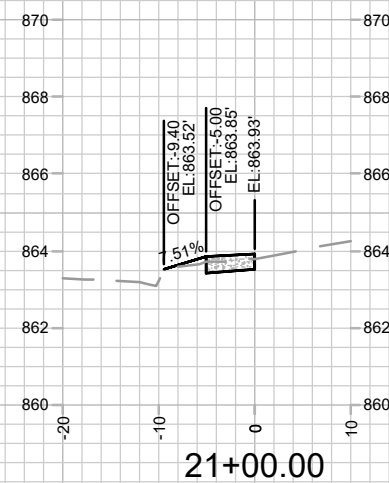
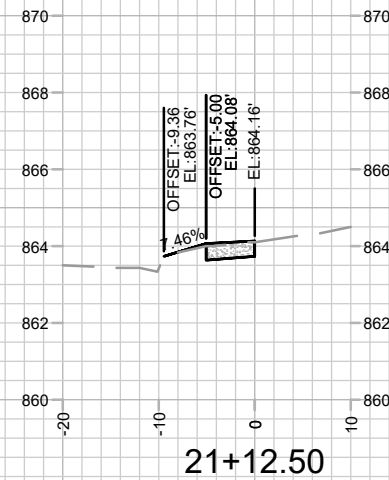
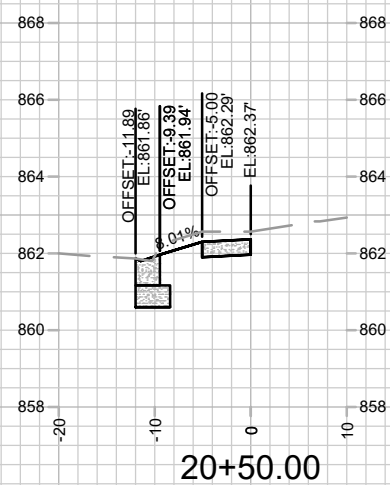
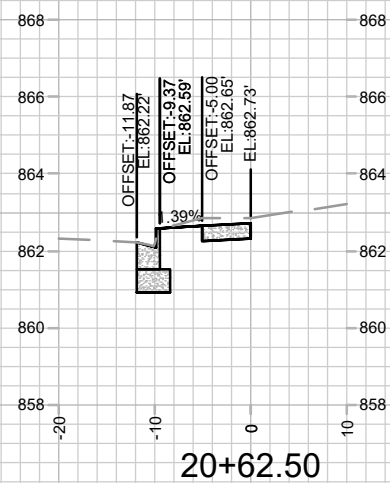
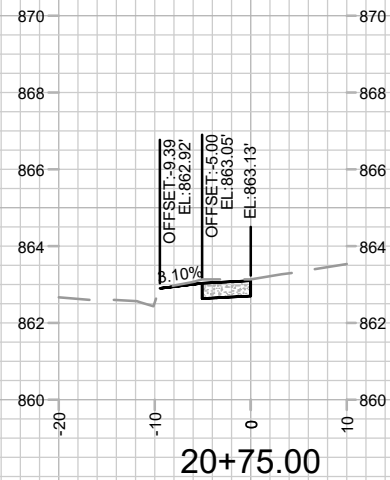
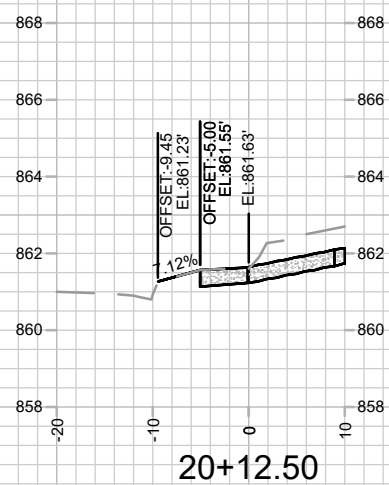
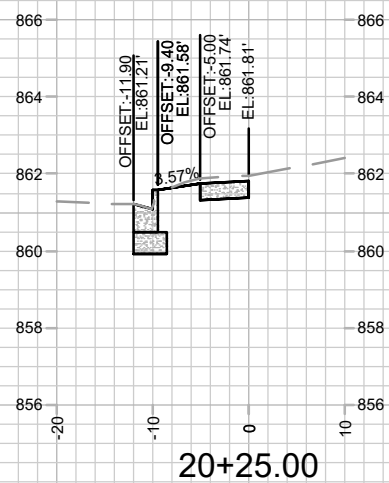
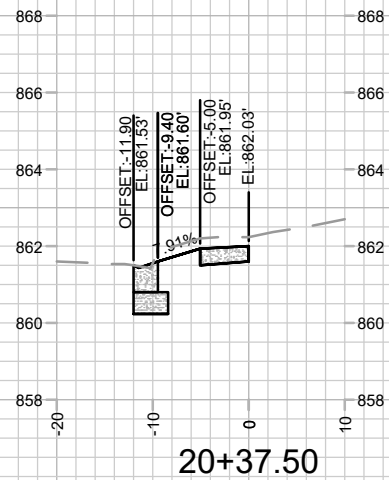
- TREE REMOVAL
- PROPOSED TREE
- TERRACE EXCAVATION SITE PER S.D.D. 2.18
- SANITARY SEWER
- STORM SEWER
- WATER LATERAL
- EXISTING TRAFFIC SIGNAL

15478		MADISON, WI		CONTRACT NO: 9597	
LANDSCAPING PLAN		1150 S PARK ST		15478	
L-1		M:\DESIGN\Projects\15478\CAD\Streets\15478EN-LandscapingPlan.dwg		CITY OF MADISON WISCONSIN	
BY		REVISION		DATE	
MARK		DESIGNED BY: GCIT		15478	
		Date: 6/9/2025 11:55 AM		Scale: 1:10	
				L-1	



	CROSS SECTIONS - S PARK ST		15478	
	1150 S PARK ST		MADISON, WI	
	M:\DESIGN\Projects\15478\CAD\Streets\15478EN-Xsections.dwg		CONTRACT NO: 9597	
	15478		X-1	

MARK	REVISION	DATE	BY
15478			
4/25/2025 8:49 AM			
1" = 20'			



CROSS SECTIONS - HIGH ST

1150 S PARK ST

M:\DESIGN\Projects\15478\CAD\Streets\15478EN-Xsections.dwg

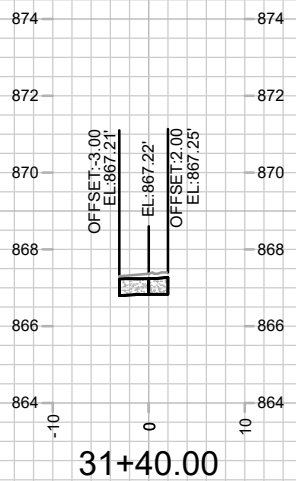
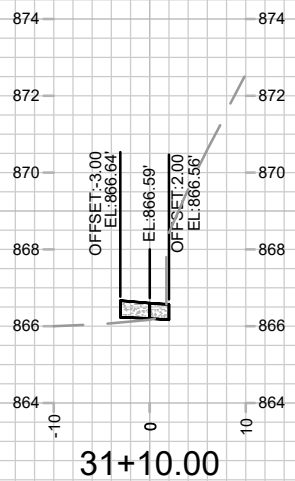
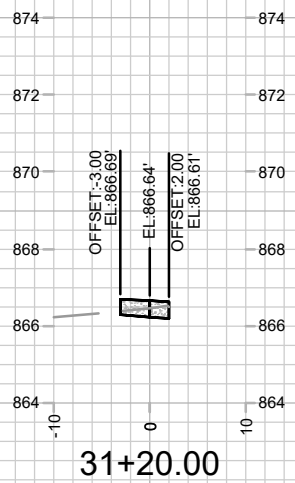
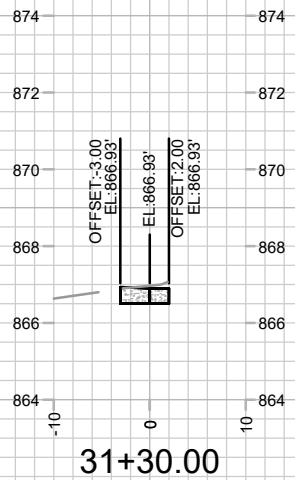
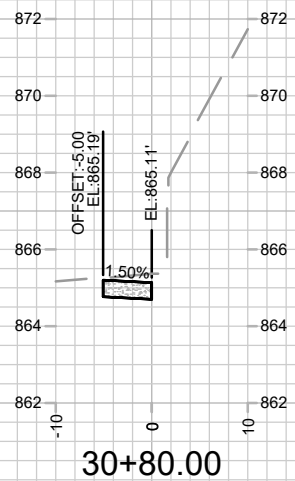
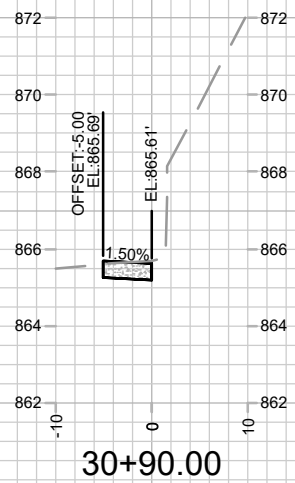
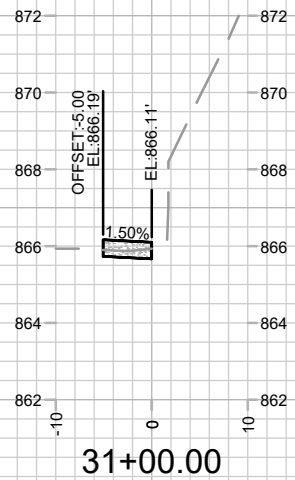
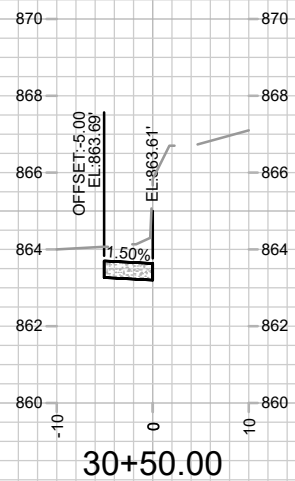
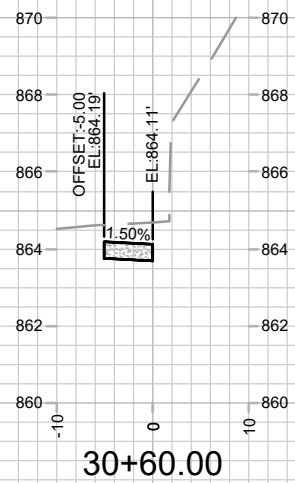
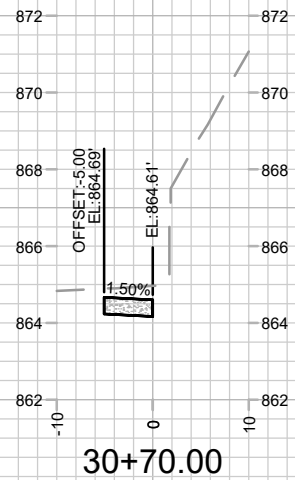
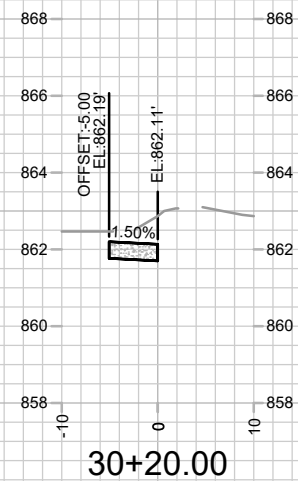
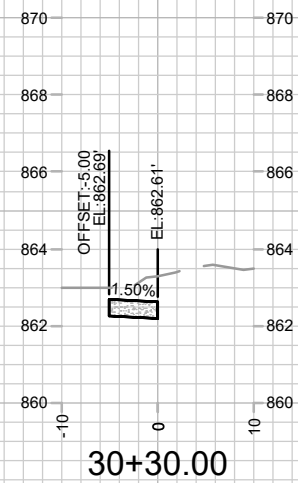
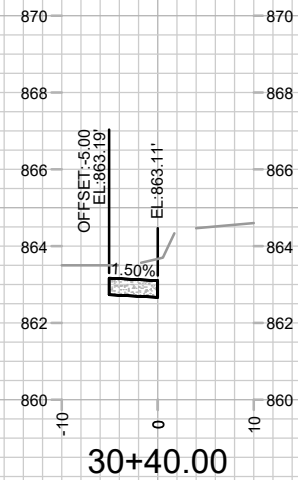
15478

MADISON, WI

9597

CONTRACT NO:

MARK	REVISION	DATE	BY
15478	1	4/25/2025 8:49 AM	X-2



15478
X-3

CROSS SECTIONS - SIDEWALK EASEMENT

1150 S PARK ST

15478
MADISON, WI

CONTRACT NO:

9597

M:\DESIGN\Projects\15478\CAD\Streets\15478EN-Xsections.dwg

MARK	REVISION	DATE	BY
15478	15478	4/25/2025 8:49 AM	X-3