

Madison, Wisconsin

CITY OF MADISON
CITY ENGINEERING DIVISION
DEPARTMENT OF PUBLIC WORKS
PLAN OF PROPOSED IMPROVEMENT

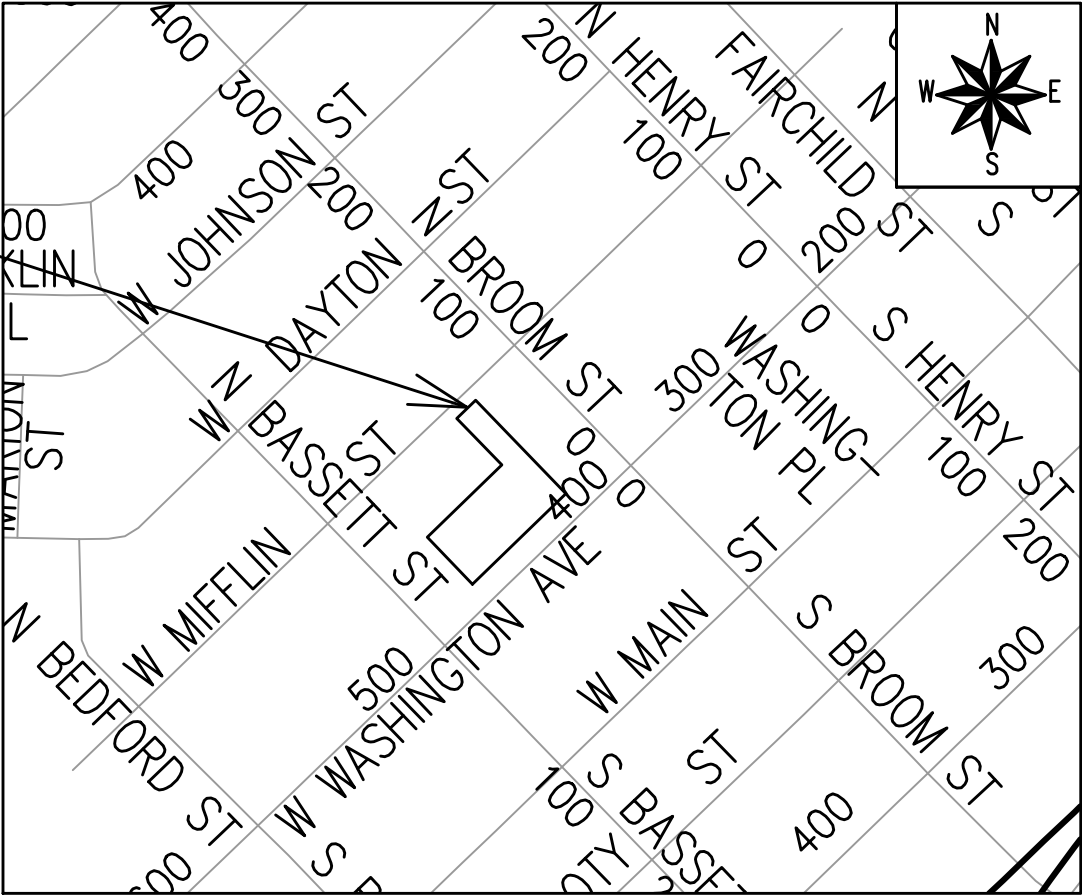
INDEX OF SHEETS

SHEET NO. D1	STANDARD NOTES
SHEET NO. D2	TYPICAL SECTIONS
SHEET NO. P1-P2	STREET PLAN & PROFILE
SHEET NO. U1-U2	UTILITY PLAN
SHEET NO. PM1	PAVEMENT MARKING PLAN
SHEET NO. X1-X3	CROSS SECTIONS
NO MAINTENANCE PLAN REQUIRED	

414 W WASHINGTON AVENUE

CITY PROJECT NO. 15594
CONTRACT NO. 9630

PROJECT
LOCATION



PUBLIC IMPROVEMENT PROJECT
APPROVED

APPROVED DATE: MARCH 11, 2025

BY THE COMMON COUNCIL
OF MADISON, WISCONSIN

PUBLIC IMPROVEMENT DESIGN
APPROVED BY:

Chris Petykowski 01/06/2026

City Engineer Date

STREET
DESIGNED BY:



01/06/2026

STORM & SANITARY SEWER
DESIGNED BY:

LATERAL ONLY

PAVEMENT MARKING
DESIGNED BY:



01/06/2026

WATER
DESIGNED BY:

LATERAL ONLY

PLOT SCALE: 1"=0' = 1"=0" XREF

PLOT NAME: ---

REV. DATE: 12/9/2025 2:14 PM

ORIGINATOR: CITY_OF_MADISON

NO TREES IN THE RIGHT OF WAY OR ON PUBLIC LANDS SHALL BE TRIMMED, PRUNED, REMOVED OR ADVERSELY AFFECTED IN ANY WAY UNTIL THE DEVELOPER HAS RECEIVED WRITTEN PERMISSION FROM THE CITY ENGINEER OR CITY FORESTER. SAID WRITTEN PERMISSION SHALL INCLUDE LANGUAGE INDICATING THAT SECTION 10.101 OF THE MADISON GENERAL ORDINANCES AND ADMINISTRATIVE PROCEDURE MEMORANDUM NO. 6-2, REFERRING TO NOTIFICATION OF PROPERTY OCCUPANTS AND/OR OWNERS, HAS BEEN COMPLIED WITH.

DEVELOPER MUST SUBMIT A TRAFFIC CONTROL PLAN TO CITY TRAFFIC ENGINEERING AT LEAST 14 DAYS PRIOR TO THE START OF WORK. WORK SHALL NOT PROCEED UNTIL AN APPROVED TRAFFIC CONTROL PLAN IS IN PLACE.

CONTACT THE PROJECT ENGINEER AND DESIGNER, NASHALY GUTIERREZ, AT NGUTIERREZ@CITYOFMADISON.COM FOR CAD FILES AND ALIGNMENT DATA PRIOR TO STAKING.

CONTACT THE CITY CONSTRUCTION ENGINEER, KYLE FRANK, AT KFRANK@CITYOFMADISON.COM FOR PRECONSTRUCTION SCHEDULING, COORDINATION, AND INSPECTION.

CONVENTIONAL SIGNS

FIELD VERIFY ALL UTILITY LOCATIONS

GAS

STORM SEWER

SANITARY SEWER

WATER

BURIED ELECTRIC

OVERHEAD ELECTRIC

POWER POLE

ADA COMPLIANT RAMP W/
DETECTABLE WARNING FIELD

COMBUSTIBLE FLUIDS

— G —

— ST —

— SAN —

— W —

— E —

— OH —

UNDERDRAINS SHALL BE INSTALLED PER STANDARD DETAIL DRAWING 4.05 FOR 75' ON EACH SIDE OF THE LOW POINT, OR TO THE NEAREST CURB HIGH POINT. ALL UNDERDRAIN SHALL BE WRAPPED.

ALL GUTTERS SHALL DRAIN WITH A MINIMUM GRADE OF 0.5% TOWARD STORM SEWER INLETS.

ALL DITCHES SHALL DRAIN WITH A MINIMUM GRADE OF 0.5%

THE CROSS SLOPE OF SIDEWALKS AND BARRIER FREE SIDEWALK CURB RAMPS SHALL TYPICALLY BE 1.5%. THE LONGITUDINAL GRADE OF BARRIER FREE SIDEWALK CURB RAMPS SHALL NOT EXCEED 8.33%. ALL SIDEWALK RAMPS SHALL BE CONSTRUCTED ACCORDING TO S.D.D. 3.04. AT ALL OTHER LOCATIONS THE LONGITUDINAL GRADE OF SIDEWALKS SHALL NOT EXCEED 5.0 % OR THE ADJACENT STREET GRADE WHICHEVER IS GREATER NOR BE LESS THAN 0.5% AND SHALL DRAIN TOWARD STORM SEWER INLETS. SIDE SLOPES WITHIN TEN FEET OF A PUBLIC SIDEWALK SHALL NOT EXCEED 4:1. ALL SIDEWALK AND SIDEWALK RAMP ELEVATIONS AND GRADES SHALL BE FIELD VERIFIED AND SET TO COMPLY WITH THE CITY OF MADISON STANDARD SPECIFICATIONS AND THE A.D.A. GUIDELINES.

CURB STATION AND OFFSETS SHALL BE TO THE EDGE OF PAVEMENT UNLESS OTHERWISE INDICATED. CURB ELEVATIONS SHALL BE TO THE EDGE OF PAVEMENT UNLESS OTHERWISE INDICATED.

POWER POLES AND OTHER OBSTRUCTIONS SHALL BE MOVED TO PROVIDE 2 FEET MINIMUM OF CLEAR DISTANCE FROM ANY FACE OF CURB OR EDGE OF SIDEWALK UNLESS OTHERWISE INDICATED ON THE PLANS.

ANY INFORMATION SHOWN ON THIS PLAN, WHICH IS NOT PART OF THIS RIGHT-OF-WAY PROJECT, IS PRELIMINARY AND NOT FOR CONSTRUCTION.

THERE MAY BE EXISTING UTILITIES OR OTHER FEATURES WHICH ARE EITHER NOT SHOWN OR SHOWN INCORRECTLY ON THIS PLAN. IT IS THE RESPONSIBILITY OF THE DEVELOPER TO LOCATE AND IDENTIFY ALL UTILITIES AND TOPOGRAPHY WHICH MAY AFFECT THE CONSTRUCTION OF THESE IMPROVEMENTS.

ALL PERMANENT SIGNING AND POSTING WILL BE DETERMINED AND PROVIDED BY THE TRAFFIC ENGINEERING DIVISION, FOLLOWING CONSTRUCTION OF THESE IMPROVEMENTS.

THE DEVELOPER SHALL PROVIDE, INSTALL AND MAINTAIN ALL STREET END BARRICADES, SIGNING AND TRAFFIC CONTROL, AS REQUIRED BY THE CITY TRAFFIC ENGINEER.

PAVEMENT SAWCUTS SHALL BE AS DIRECTED BY THE CITY CONSTRUCTION ENGINEER. SAWCUTS SHOWN ON THE PLAN ARE APPROXIMATE.

CURB ON CUL DE SACS SHALL BE INSTALLED ACCORDING TO S.D.D 3.05.

ALL WORK IN THE RIGHT OF WAY AND PUBLIC EASEMENTS SHALL BE IN ACCORDANCE WITH THE CITY OF MADISON STANDARD SPECIFICATIONS FOR PUBLIC WORKS CONSTRUCTION LATEST EDITION.

ALL PROPOSED IMPROVEMENTS IN THE RIGHT-OF-WAY ARE BASED ON SURVEY DATA PROVIDED BY THE DEVELOPER OR ITS CONSULTANT. IN THE CASE THAT THE PROPOSED IMPROVEMENTS CAN NOT BE INSTALLED PER THESE PLANS OR THE CITY OF MADISON STANDARD SPECIFICATION FOR PUBLIC WORKS CONSTRUCTION, LATEST EDITION, THE DEVELOPER SHALL BE RESPONSIBLE FOR THE COST OF EXTRA WORK DUE TO INACCURACIES OF THE SURVEY.

THE DEVELOPER SHALL PERFORM ULOs (UTILITY LINE OPENINGS) TO IDENTIFY ALL POTENTIAL CONFLICTS FOR UNDERGROUND UTILITIES NECESSARY TO DETERMINE THE FEASIBILITY OF THE STORM AND / OR SANITARY CONNECTIONS. THIS SHALL BE DONE PRIOR TO THE ISSUANCE OF THE CITY PLANS AND PRIOR TO THE START OF WORK ON ANY WORK COVERED UNDER THE DEVELOPER'S AGREEMENT. THE DEVELOPER SHALL BE FULLY RESPONSIBLE FOR IDENTIFYING CONFLICTS AND MODIFYING THEIR DESIGNS TO FIT THE SITE. MODIFICATIONS NECESSARY TOO SERVE THE SITE WILL BE THE DEVELOPER'S EXTENSE.

ALL UTILITY VERIFICATIONS AND ACCURACY OF THE DRAWINGS ARE THE RESPONSIBILITY OF THE DEVELOPER. ANY CONFLICTS THAT ARISE FROM MISSING OR ERRONEOUS INFORMATION WILL BE AT THE EXPENSE OF THE DEVELOPER. NO PRECAST STRUCTURES WILL BE APPROVED FOR STORM OR SANITARY SEWER UNTIL ALL POTENTIAL UTILITY CONFLICTS ARE RESOLVED.

IN LOCATIONS WHERE PAVEMENT RESTORATION IS NOT IDENTIFIED ADJACENT TO CURB AND GUTTER REPLACEMENT, IT IS ASSUMED THAT CURB AND GUTTER WILL BE REPLACED WITHOUT DAMAGING ADJACENT PAVEMENT. IF DAMAGED, THE PAVEMENT RESTORATION LIMITS SHALL BE EXTENDED BY THE CITY CONSTRUCTION ENGINEER AS NECESSARY TO MEET THE STANDARD PATCHING CRITERIA.

15594

MADISON, WI

9630

CONTRACT NO:

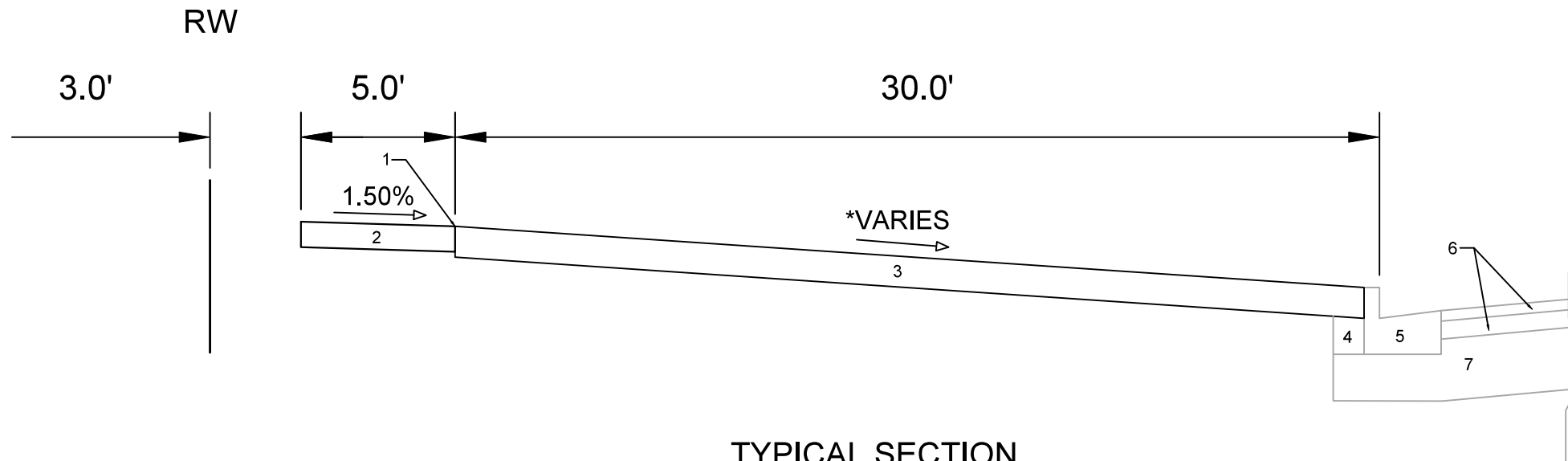
STANDARD NOTES

414 W WASHINGTON AVENUE

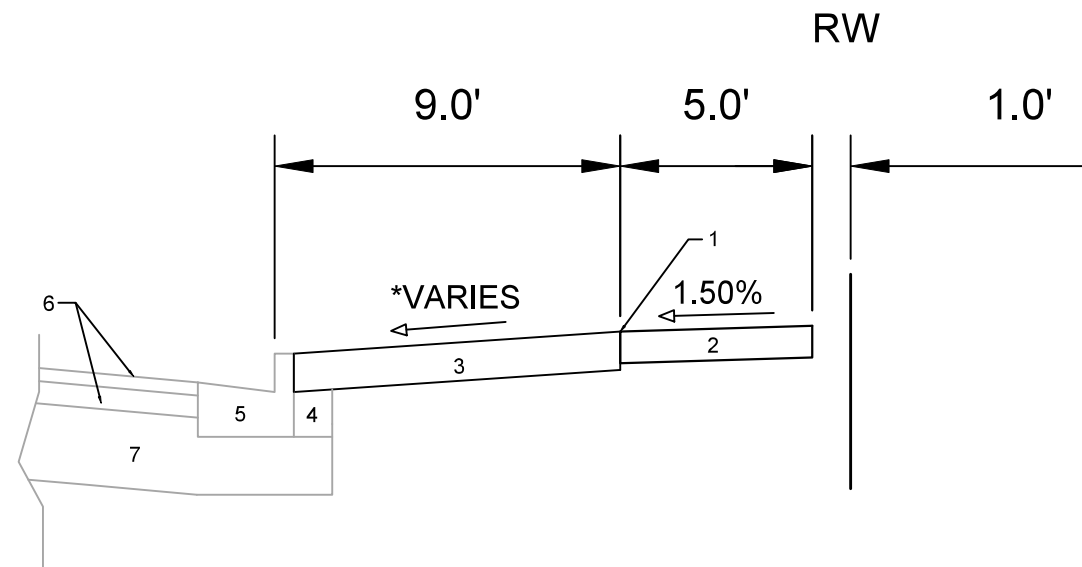
M:\DESIGN\Projects\15594\CAD\Streets\15594EN-Details.dwg

15594

D-1



TYPICAL SECTION
W WASHINGTON AVENUE



TYPICAL SECTION
W MIFFLIN STREET

SPECIAL NOTES:

*SEE X-SHEETS FOR CROSS SLOPES

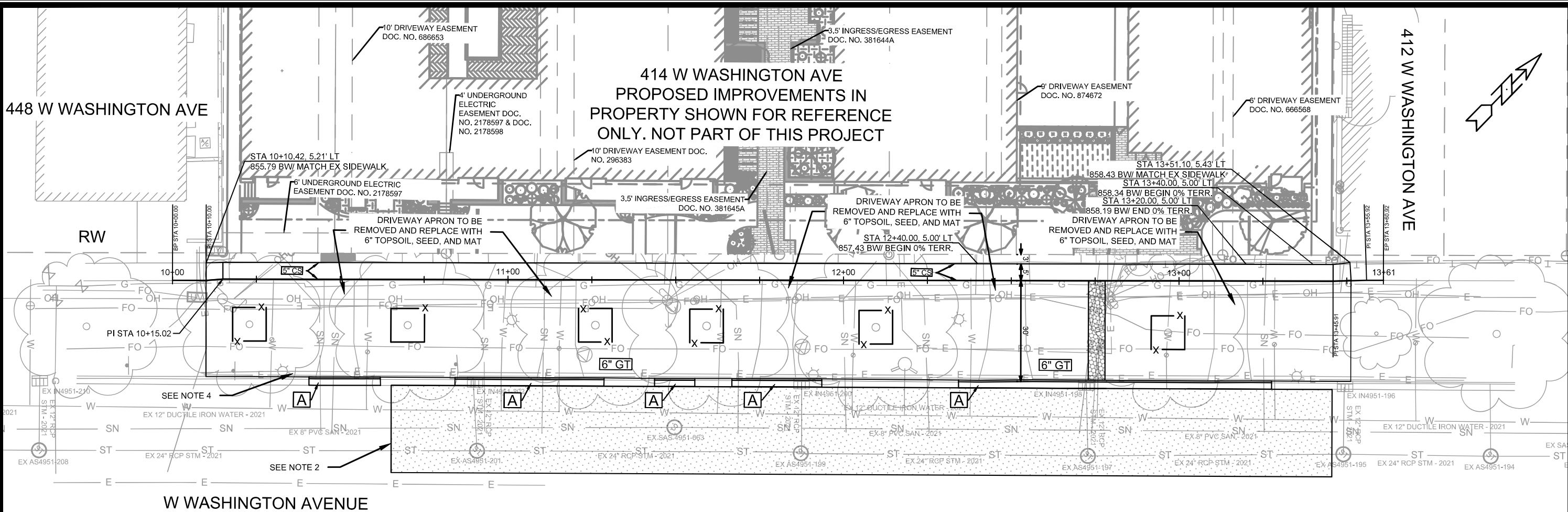
- 1 POINT REFERRED TO ON PROFILE FOR F.W.
- 2 5" CONCRETE SIDEWALK
- 3 6" TOPSOIL, SEED AND MATTING
- 4 EX. FILL TO REMAIN, INSTALL AT CURB REPLACEMENT LOCATIONS
- 5 EX. TYPE "A" CONCRETE CURB & GUTTER, REPLACE AT LOCATIONS IDENTIFIED ON P-SHEETS OR AS DIRECTED BY THE CONSTRUCTION ENGINEER
- 6 EX. PAVEMENT TO REMAIN
- 7 EX. ROAD BASE TO REMAIN

DATE	BY
12/8/2025	3:45 PM
REVISION	Scale:
15594	D-2

15594	MADISON, WI	9630
414 W WASHINGTON AVENUE	CONTRACT NO:	
M:\DESIGN\Projects\15594\CAD\Streets\15594EN-Details.dwg		



15594
D-2

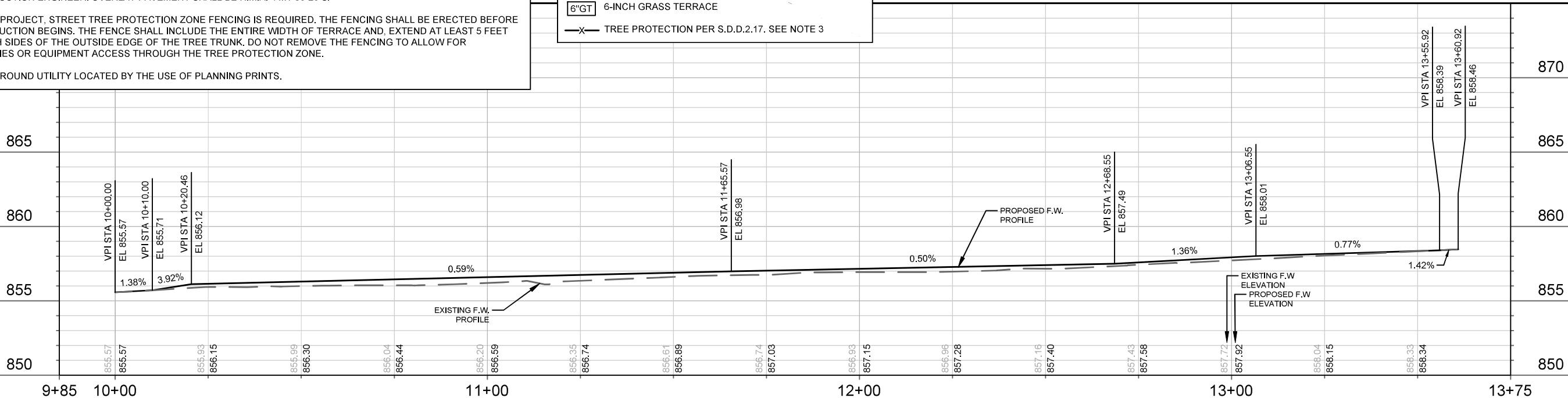


NOTES:

1. IN LOCATIONS WHERE PAVEMENT RESTORATION IS NOT IDENTIFIED ADJACENT TO CURB AND GUTTER REPLACEMENT, IT IS ASSUMED THAT CURB AND GUTTER WILL BE REPLACED WITHOUT DAMAGING ADJACENT PAVEMENT. IF DAMAGED, THE MILL AND OVERLAY LIMITS SHALL BE EXTENDED BY THE CITY CONSTRUCTION ENGINEER AS NECESSARY TO MEET THE STANDARD PATCHING CRITERIA.
2. 2.50" MILL AND OVERLAY LIMITS. LIMITS SHOWN ARE APPROXIMATE AND CAN BE MODIFIED IN THE FIELD BY THE CITY CONSTRUCTION ENGINEER. OVERLAY PAVEMENT SHALL BE H.M.A. 4 MT 58-28 S.
3. ON THIS PROJECT, STREET TREE PROTECTION ZONE FENCING IS REQUIRED. THE FENCING SHALL BE ERECTED BEFORE CONSTRUCTION BEGINS. THE FENCE SHALL INCLUDE THE ENTIRE WIDTH OF TERRACE AND, EXTEND AT LEAST 5 FEET ON BOTH SIDES OF THE OUTSIDE EDGE OF THE TREE TRUNK. DO NOT REMOVE THE FENCING TO ALLOW FOR DELIVERIES OR EQUIPMENT ACCESS THROUGH THE TREE PROTECTION ZONE.
4. UNDERGROUND UTILITY LOCATED BY THE USE OF PLANNING PRINTS.

LEGEND

- MILL & OVERLAY PATCHING LIMITS. SEE NOTE 2
- 5.00" CONCRETE WATERWAY
- SPOT REPLACE CURB & GUTTER TYPE 'A'. SEE NOTE 1
- 5"CS 5-INCH CONCRETE SIDEWALK
- 6"GT 6-INCH GRASS TERRACE
- TREE PROTECTION PER S.D.D.2.17. SEE NOTE 3



STREET PLAN & PROFILE - W WASHINGTON AVENUE

15594

414 W WASHINGTON AVENUE

MADISON, WI

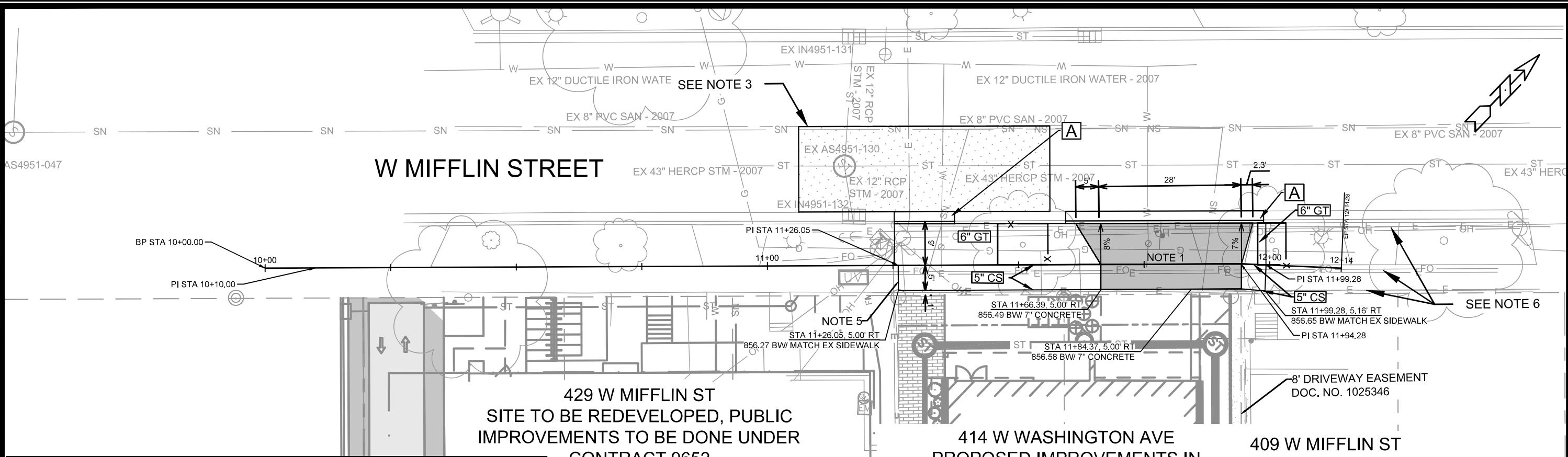
CONTRACT NO: 9630

15594

P-1

15594

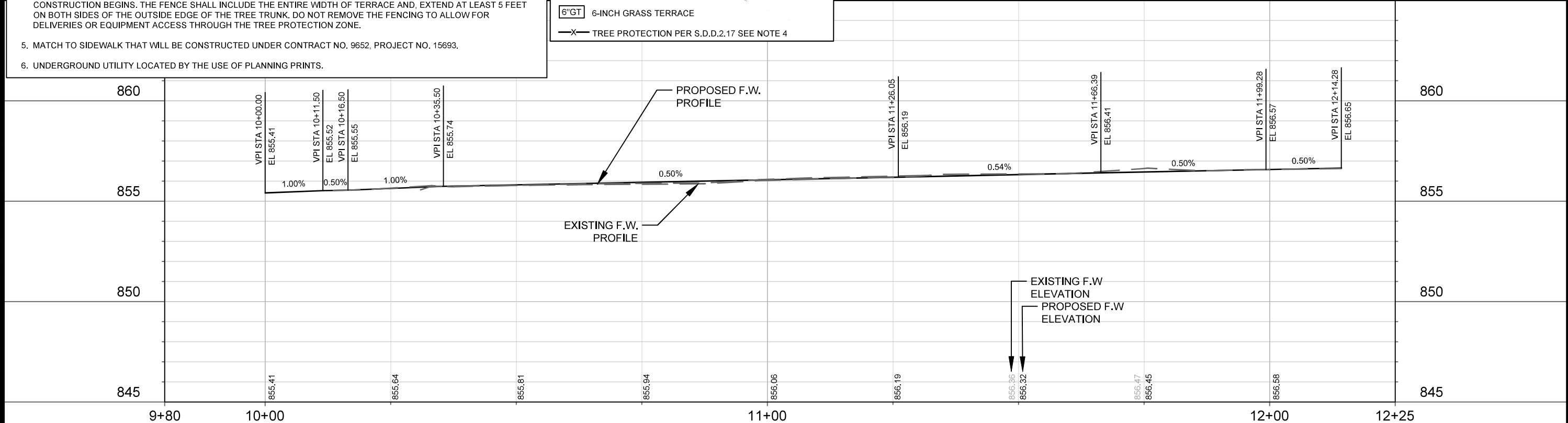
P-1



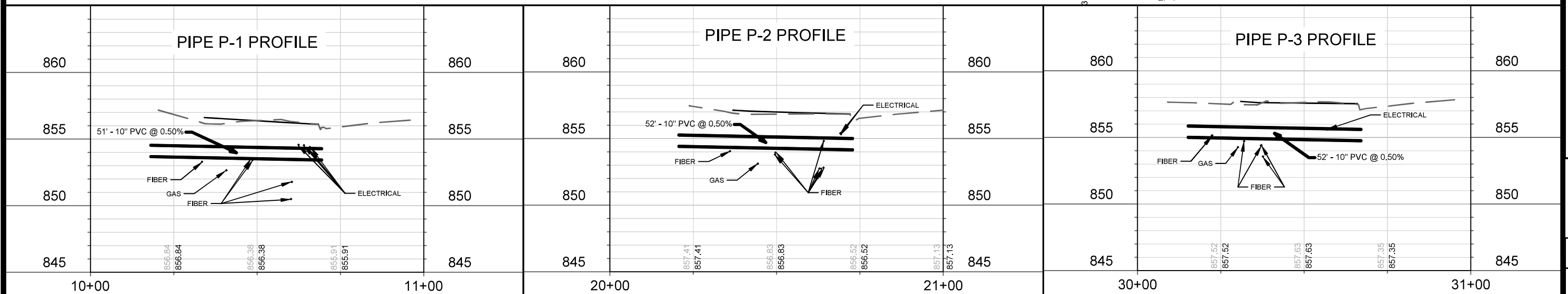
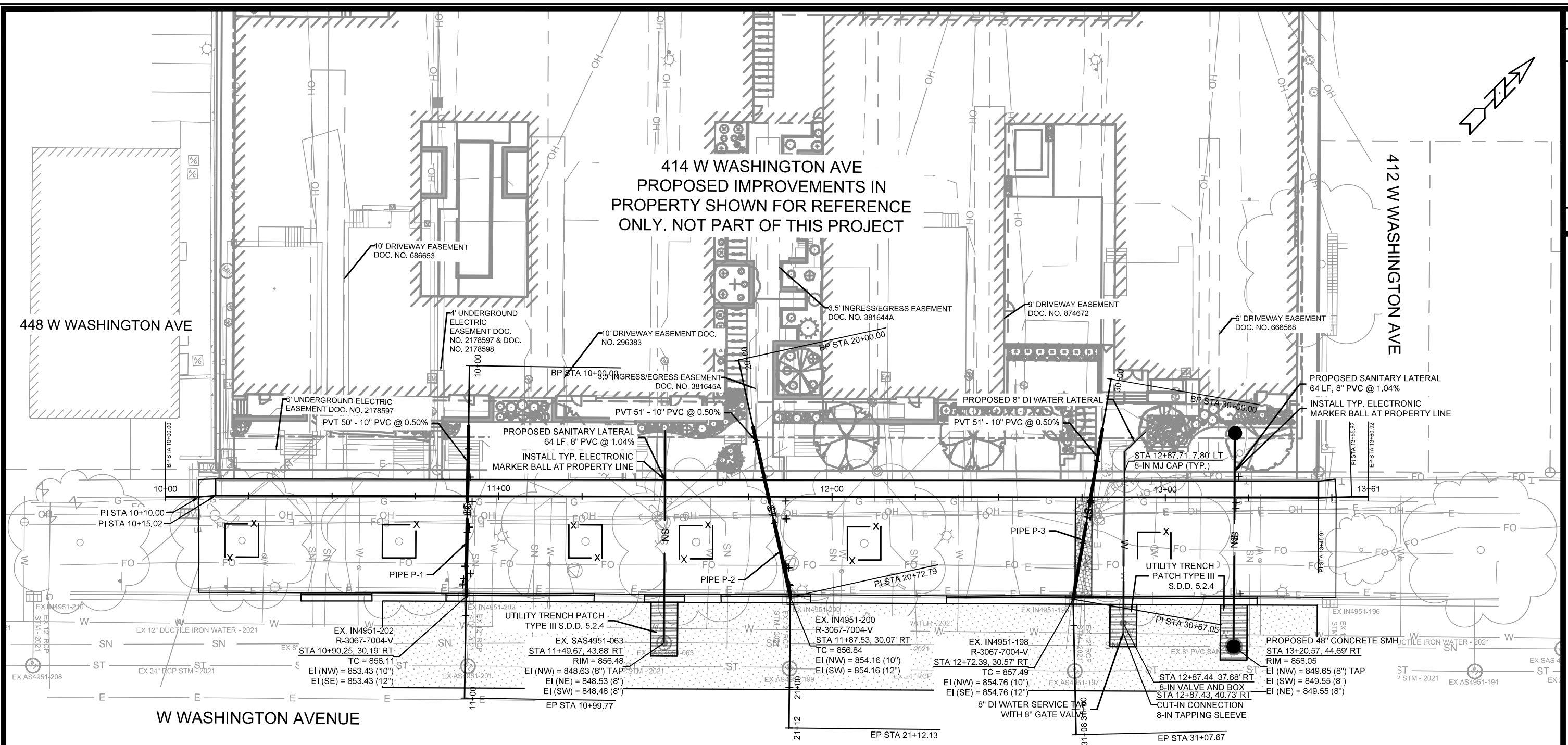
- NOTES:
- SEE COMMERCIAL DRIVEWAY PERMIT LNDUSE-2024-00087
M:\DESIGN\Projects\15594\Project Documents\Permits\ITE Commercial Dwy Permit
 - IN LOCATIONS WHERE PAVEMENT RESTORATION IS NOT IDENTIFIED ADJACENT TO CURB AND GUTTER REPLACEMENT, IT IS ASSUMED THAT CURB AND GUTTER WILL BE REPLACED WITHOUT DAMAGING ADJACENT PAVEMENT. IF DAMAGED, THE MILL AND OVERLAY LIMITS SHALL BE EXTENDED BY THE CITY CONSTRUCTION ENGINEER AS NECESSARY TO MEET THE STANDARD PATCHING CRITERIA.
 - 1.75" MILL AND OVERLAY LIMITS. LIMITS SHOWN ARE APPROXIMATE AND CAN BE MODIFIED IN THE FIELD BY THE CITY CONSTRUCTION ENGINEER. OVERLAY PAVEMENT SHALL BE H.M.A. 4 LT 58-28 S.
 - ON THIS PROJECT, STREET TREE PROTECTION ZONE FENCING IS REQUIRED. THE FENCING SHALL BE ERECTED BEFORE CONSTRUCTION BEGINS. THE FENCE SHALL INCLUDE THE ENTIRE WIDTH OF TERRACE AND, EXTEND AT LEAST 5 FEET ON BOTH SIDES OF THE OUTSIDE EDGE OF THE TREE TRUNK. DO NOT REMOVE THE FENCING TO ALLOW FOR DELIVERIES OR EQUIPMENT ACCESS THROUGH THE TREE PROTECTION ZONE.
 - MATCH TO SIDEWALK THAT WILL BE CONSTRUCTED UNDER CONTRACT NO. 9652, PROJECT NO. 15693.
 - UNDERGROUND UTILITY LOCATED BY THE USE OF PLANNING PRINTS.


LEGEND

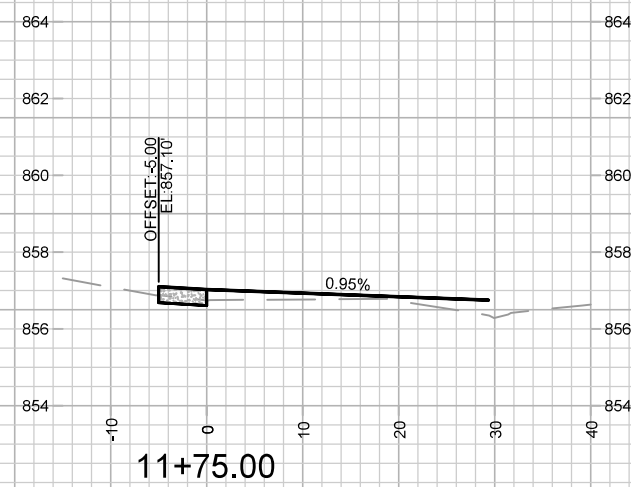
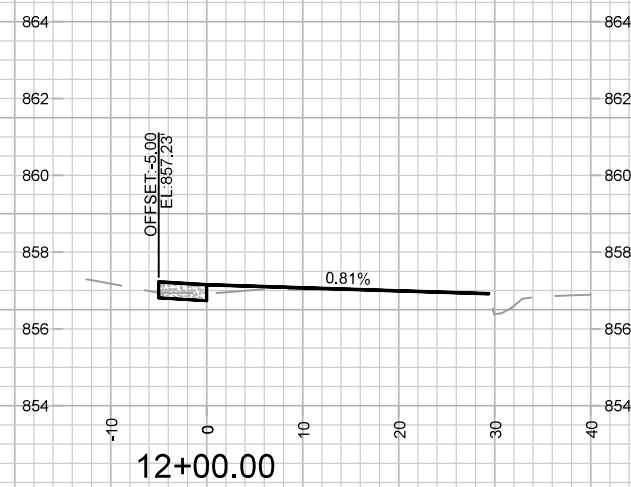
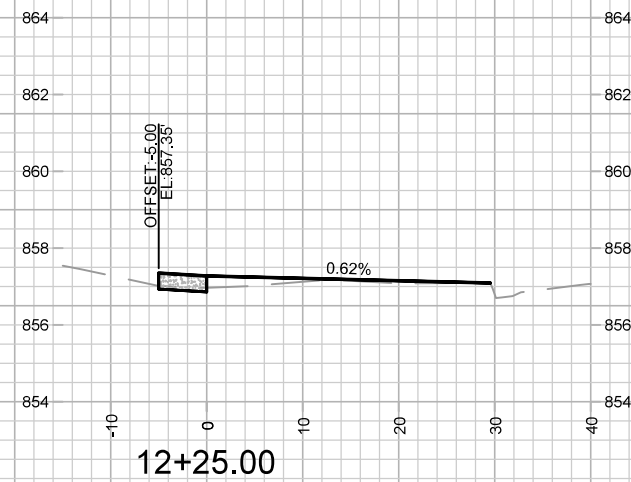
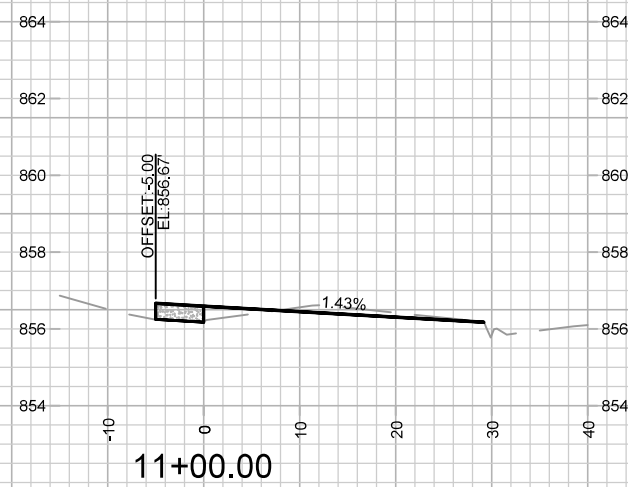
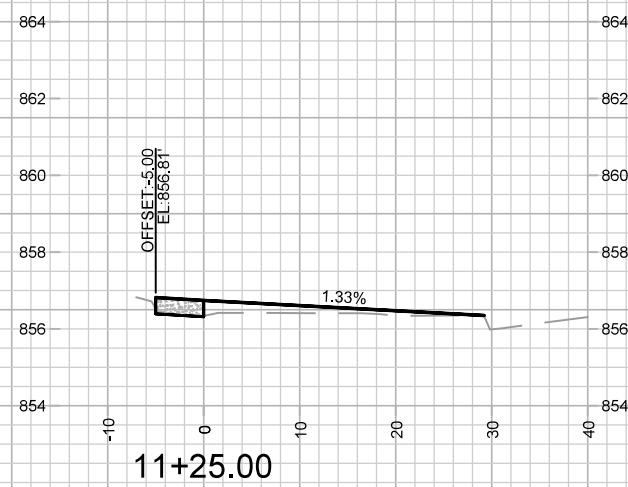
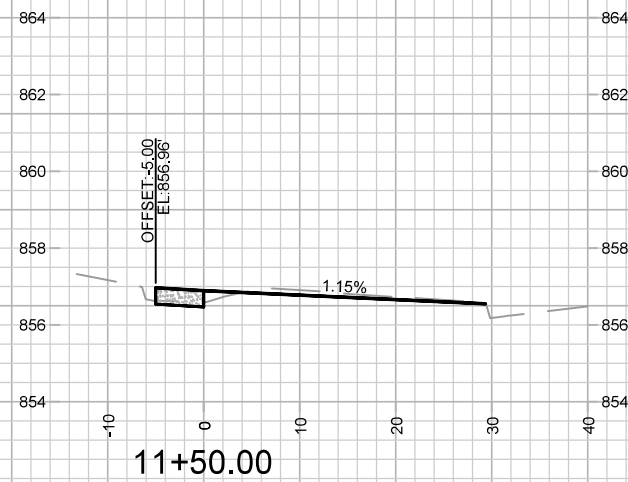
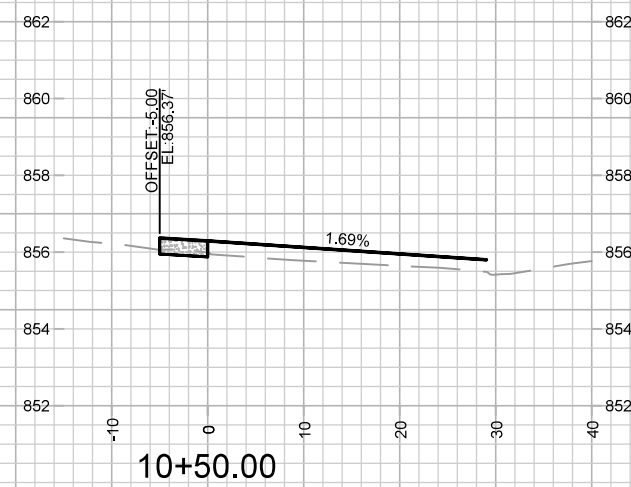
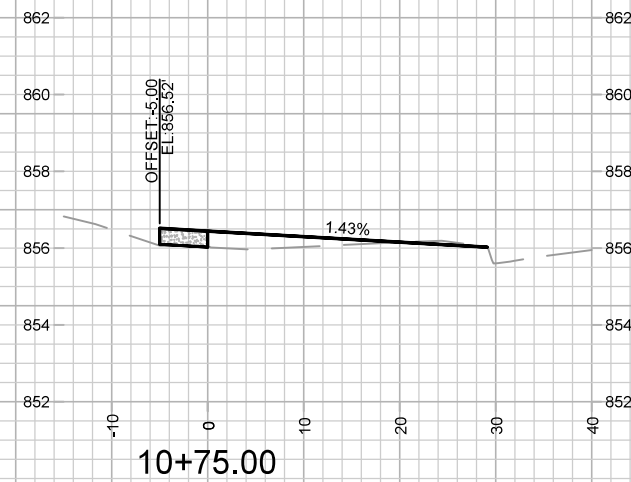
- MILL & OVERLAY PATCHING LIMITS. SEE NOTE 3
- 7.00" CONCRETE
- A SPOT REPLACE CURB & GUTTER TYPE 'A'. SEE NOTE 2
- 5"CS 5-INCH CONCRETE SIDEWALK
- 6"GT 6-INCH GRASS TERRACE
- X TREE PROTECTION PER S.D.D.2.17 SEE NOTE 4

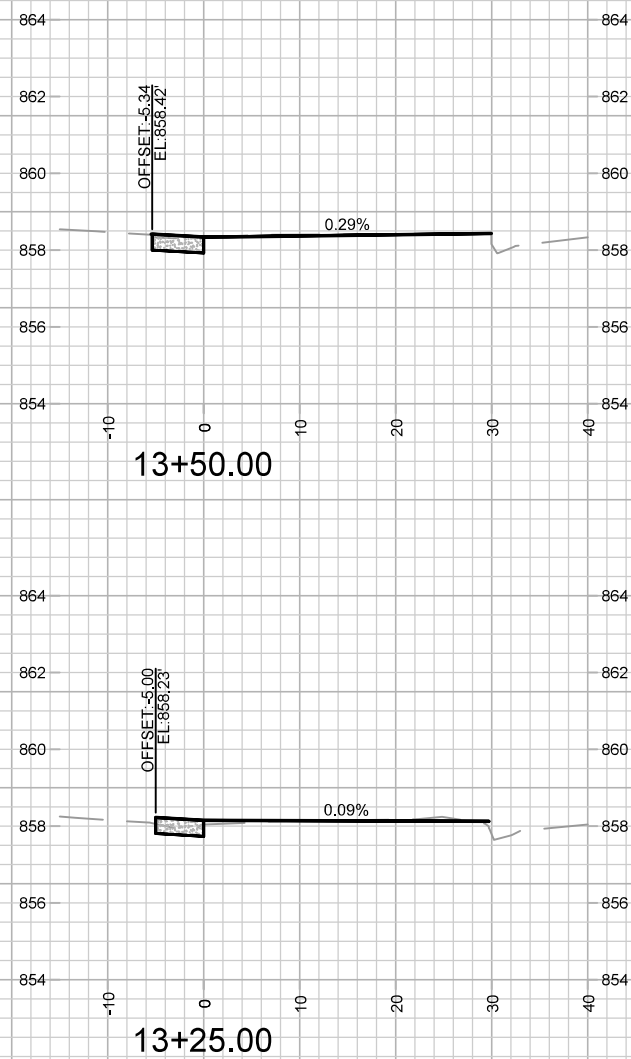
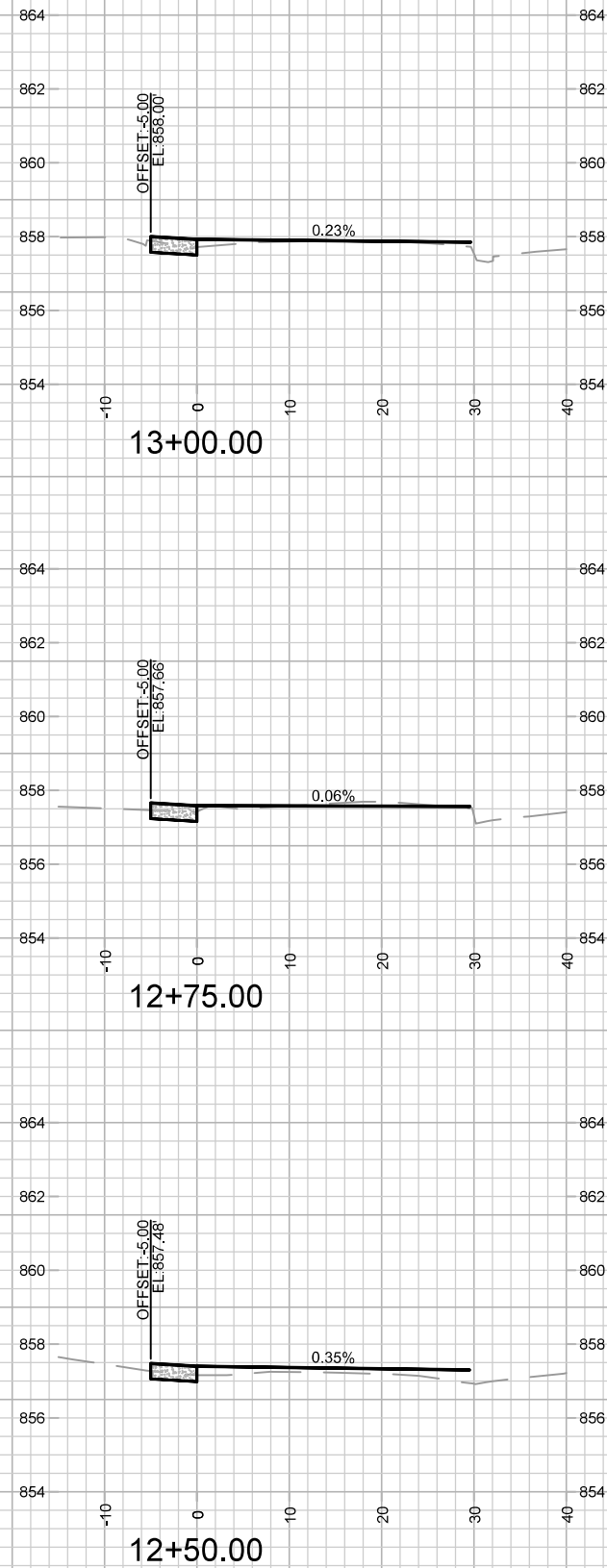


15594	MADISON, WI	9630	CONTRACT NO:
STREET PLAN & PROFILE - W MIFFLIN STREET			
414 W WASHINGTON AVENUE			
M:\DESIGN\Projects\15594\CAD\Streets\15594EN-PnP.dwg			
15594			
P-2			



<div></div> <div>15594</div> <div>U-1</div>	UTILITY PLAN - W WASHINGTON AVENUE		15594																																																																																																																																																																																																																																																																																																																																																																																																																																																																																																																																																																																																																																																																																																																																																																																																																																																																																																																																																																																																																																																																																																																																																																																																																																																																																																																																																																																																						
--	------------------------------------	--	-------	--	--	--	--	--	--	--	--	--	--	--	--	--	--	--	--	--	--	--	--	--	--	--	--	--	--	--	--	--	--	--	--	--	--	--	--	--	--	--	--	--	--	--	--	--	--	--	--	--	--	--	--	--	--	--	--	--	--	--	--	--	--	--	--	--	--	--	--	--	--	--	--	--	--	--	--	--	--	--	--	--	--	--	--	--	--	--	--	--	--	--	--	--	--	--	--	--	--	--	--	--	--	--	--	--	--	--	--	--	--	--	--	--	--	--	--	--	--	--	--	--	--	--	--	--	--	--	--	--	--	--	--	--	--	--	--	--	--	--	--	--	--	--	--	--	--	--	--	--	--	--	--	--	--	--	--	--	--	--	--	--	--	--	--	--	--	--	--	--	--	--	--	--	--	--	--	--	--	--	--	--	--	--	--	--	--	--	--	--	--	--	--	--	--	--	--	--	--	--	--	--	--	--	--	--	--	--	--	--	--	--	--	--	--	--	--	--	--	--	--	--	--	--	--	--	--	--	--	--	--	--	--	--	--	--	--	--	--	--	--	--	--	--	--	--	--	--	--	--	--	--	--	--	--	--	--	--	--	--	--	--	--	--	--	--	--	--	--	--	--	--	--	--	--	--	--	--	--	--	--	--	--	--	--	--	--	--	--	--	--	--	--	--	--	--	--	--	--	--	--	--	--	--	--	--	--	--	--	--	--	--	--	--	--	--	--	--	--	--	--	--	--	--	--	--	--	--	--	--	--	--	--	--	--	--	--	--	--	--	--	--	--	--	--	--	--	--	--	--	--	--	--	--	--	--	--	--	--	--	--	--	--	--	--	--	--	--	--	--	--	--	--	--	--	--	--	--	--	--	--	--	--	--	--	--	--	--	--	--	--	--	--	--	--	--	--	--	--	--	--	--	--	--	--	--	--	--	--	--	--	--	--	--	--	--	--	--	--	--	--	--	--	--	--	--	--	--	--	--	--	--	--	--	--	--	--	--	--	--	--	--	--	--	--	--	--	--	--	--	--	--	--	--	--	--	--	--	--	--	--	--	--	--	--	--	--	--	--	--	--	--	--	--	--	--	--	--	--	--	--	--	--	--	--	--	--	--	--	--	--	--	--	--	--	--	--	--	--	--	--	--	--	--	--	--	--	--	--	--	--	--	--	--	--	--	--	--	--	--	--	--	--	--	--	--	--	--	--	--	--	--	--	--	--	--	--	--	--	--	--	--	--	--	--	--	--	--	--	--	--	--	--	--	--	--	--	--	--	--	--	--	--	--	--	--	--	--	--	--	--	--	--	--	--	--	--	--	--	--	--	--	--	--	--	--	--	--	--	--	--	--	--	--	--	--	--	--	--	--	--	--	--	--	--	--	--	--	--	--	--	--	--	--	--	--	--	--	--	--	--	--	--	--	--	--	--	--	--	--	--	--	--	--	--	--	--	--	--	--	--	--	--	--	--	--	--	--	--	--	--	--	--	--	--	--	--	--	--	--	--	--	--	--	--	--	--	--	--	--	--	--	--	--	--	--	--	--	--	--	--	--	--	--	--	--	--	--	--	--	--	--	--	--	--	--	--	--	--	--	--	--	--	--	--	--	--	--	--	--	--	--	--	--	--	--	--	--	--	--	--	--	--	--	--	--	--	--	--	--	--	--	--	--	--	--	--	--	--	--	--	--	--	--	--	--	--	--	--	--	--	--	--	--	--	--	--	--	--	--	--	--	--	--	--	--	--	--	--	--	--	--	--	--	--	--	--	--	--	--	--	--	--	--	--	--	--	--	--	--	--	--	--	--	--	--	--	--	--	--	--	--	--	--	--	--	--	--	--	--	--	--	--	--	--	--	--	--	--	--	--	--	--	--	--	--	--	--	--	--	--	--	--	--	--	--	--	--	--	--	--	--	--	--	--	--	--	--	--	--	--	--	--	--	--	--	--	--	--	--	--	--	--	--	--	--	--	--	--	--	--	--	--	--	--	--	--	--	--	--	--	--	--	--	--	--	--	--	--	--	--	--	--	--	--	--	--	--	--	--	--	--	--	--	--	--	--	--	--	--	--	--	--	--	--	--	--	--	--	--	--	--	--	--	--	--	--	--	--	--	--	--	--	--	--	--	--	--	--	--	--	--	--	--	--	--	--	--	--	--	--	--	--	--	--	--	--	--	--	--	--	--	--	--	--	--	--	--	--	--	--	--	--	--	--	--	--	--	--	--	--	--	--	--	--	--	--	--	--	--	--	--	--	--	--	--	--	--	--	--	--	--	--	--	--	--	--	--	--	--	--	--	--	--	--	--	--	--	--	--	--	--	--	--	--	--	--	--	--	--	--	--	--	--	--	--	--	--	--	--	--	--	--	--	--	--	--	--	--	--	--	--	--	--	--	--	--	--	--	--	--	--	--	--	--	--	--	--	--	--	--	--	--	--	--	--	--	--	--	--	--	--	--	--	--	--	--	--	--	--	--	--	--	--	--	--	--	--	--	--	--	--	--	--	--	--	--	--	--	--	--	--	--	--	--	--	--	--	--	--	--	--	--	--	--	--	--	--	--	--	--	--	--	--	--	--	--	--	--	--	--	--	--	--	--	--	--	--	--	--	--	--	--	--	--	--	--	--	--	--	--	--	--	--	--	--	--	--	--	--	--	--	--	--	--	--	--	--	--	--	--	--	--	--	--	--	--	--	--	--	--	--	--	--	--	--	--	--	--	--	--	--	--	--	--	--	--	--	--	--	--	--	--	--	--	--	--	--	--	--	--	--	--	--	--	--	--	--	--	--	--	--	--	--	--	--	--	--	--	--	--	--	--	--	--	--	--	--	--	--	--	--	--	--	--	--	--	--	--	--	--	--	--	--	--	--	--	--	--	--	--	--	--	--	--	--	--	--	--	--	--	--	--	--	--	--	--	--	--	--	--	--	--	--	--	--	--	--	--	--	--	--	--	--	--	--	--	--	--	--	--	--	--	--	--	--	--	--	--	--	--	--	--	--	--	--	--	--	--	--	--	--	--	--	--	--	--	--	--	--	--	--	--	--	--	--	--	--	--	--	--





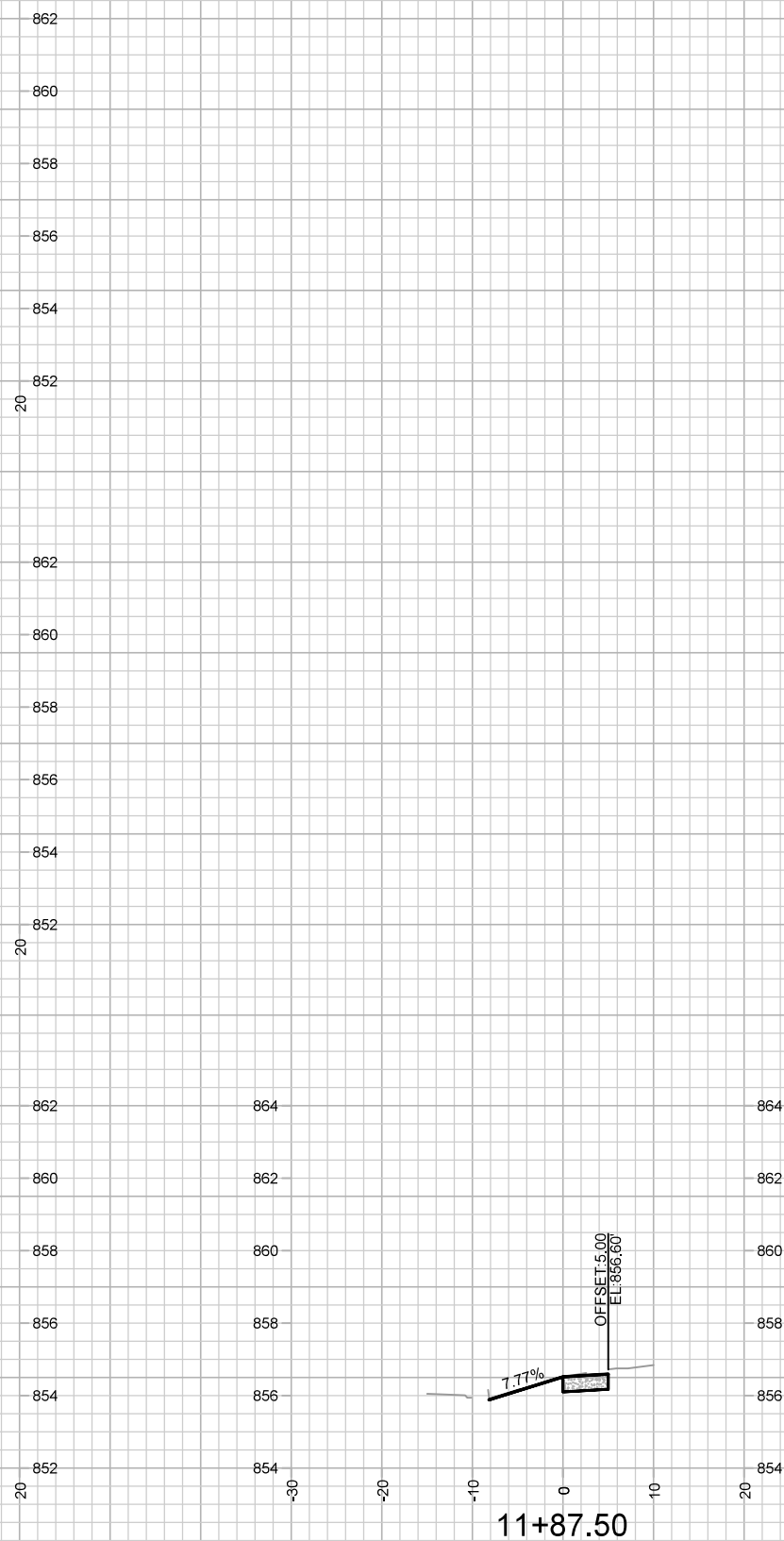
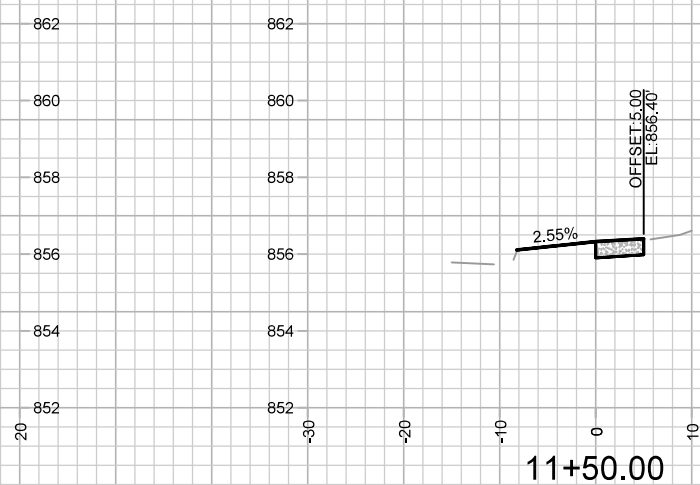
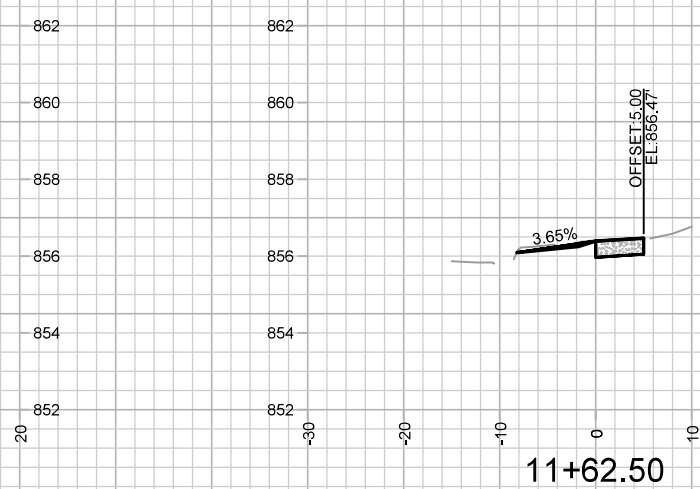
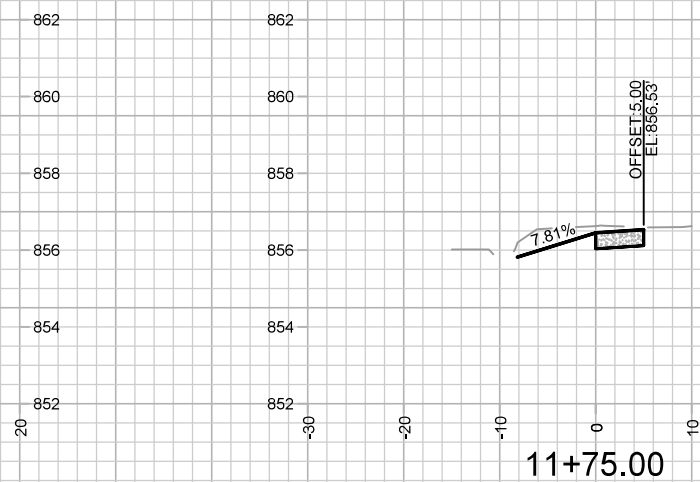
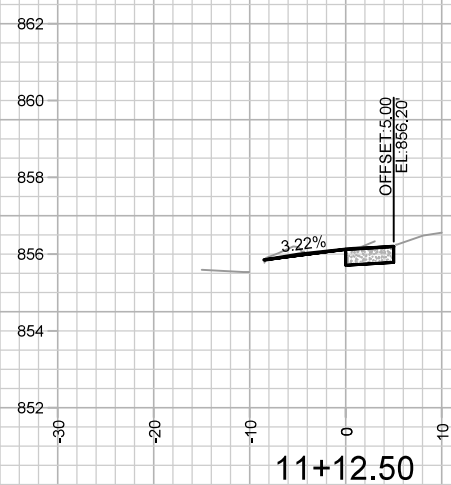
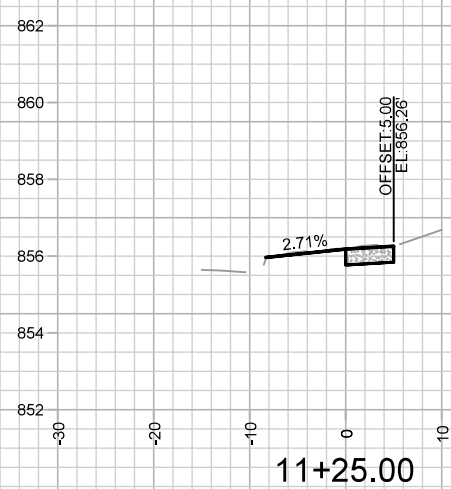
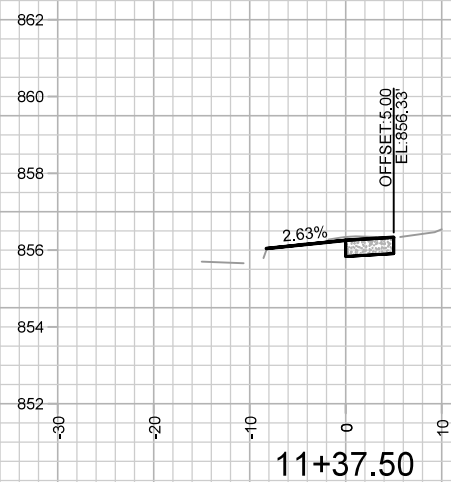
15594
X-2

CROSS SECTIONS - W WASHINGTON AVENUE
414 W WASHINGTON AVENUE

15594
MADISON, WI
CONTRACT NO: 9630

M:\DESIGN\Projects\15594\CAD\Streets\15594EN-Xsections.dwg

MARK	REVISION	DATE	BY
15594	15594	8/6/2025 9:15 AM	X-2



15594

X-3

CROSS SECTIONS - W MIFFLIN STREET

414 W WASHINGTON AVENUE

M:\DESIGN\Projects\15594\CAD\Streets\15594EN-Xsections.dwg

15594

MADISON, WI

CONTRACT NO:

MARK	REVISION	DATE	BY
DESIGNED BY: NGV	Date: 8/6/2025 9:15 AM	Scale: 1" = 20'	X-3
15594			