

Madison, Wisconsin

# CITY OF MADISON

## CITY ENGINEERING DIVISION

### DEPARTMENT OF PUBLIC WORKS

# PLAN OF PROPOSED IMPROVEMENT

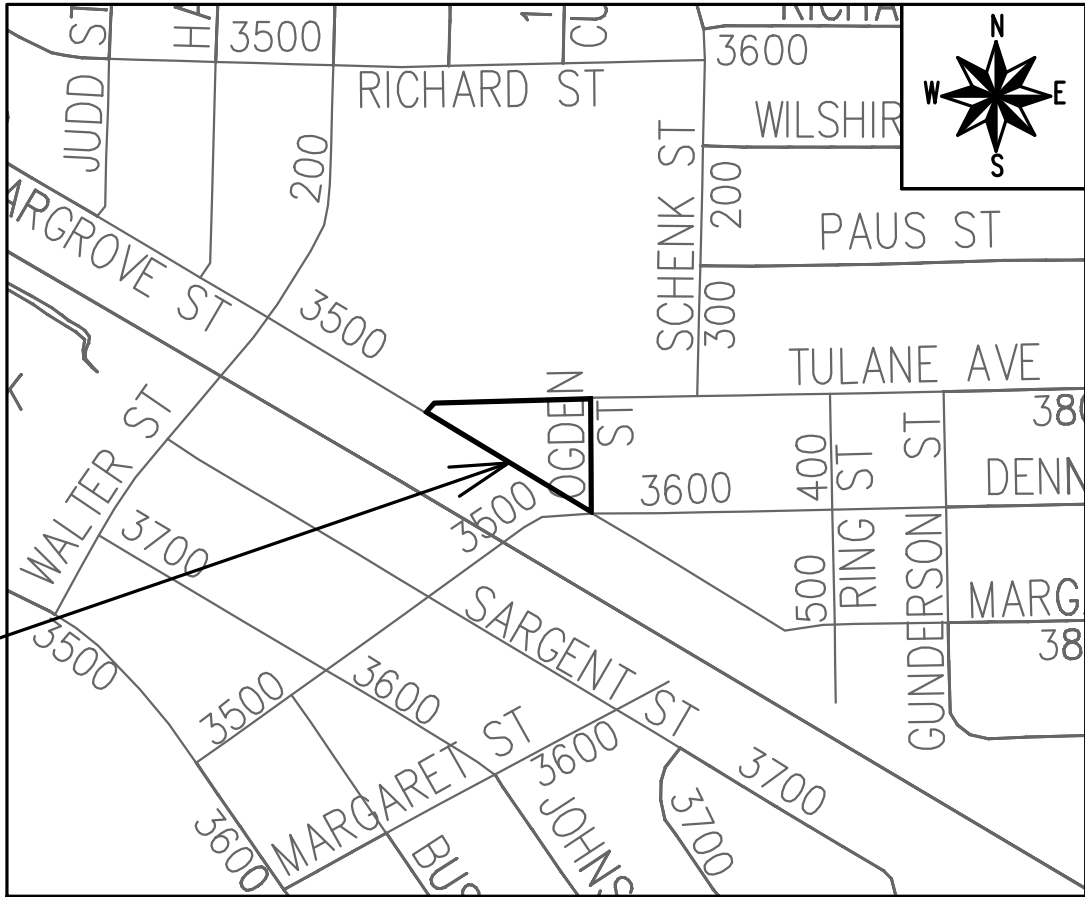
#### INDEX OF SHEETS

SHEET NO.	D1	STANDARD NOTES
SHEET NO.	D2	TYPICAL SECTIONS
SHEET NO.	P1-P3	PLAN & PROFILE
SHEET NO.	U1	UTILITY PLAN
SHEET NO.	PM1	PAVEMENT MARKING PLAN
SHEET NO.	L1	LANDSCAPING PLAN
SHEET NO.	X1	CROSS SECTIONS
NO MAINTENANCE PLAN REQUIRED		

3565 TULANE AVENUE CSM

CITY PROJECT NO. 15922  
CONTRACT NO. 9685

PROJECT  
LOCATION



WATER  
DESIGNED BY:

LATERAL ONLY

STORM & SANITARY SEWER  
DESIGNED BY:

LATERAL ONLY

PUBLIC IMPROVEMENT PROJECT  
APPROVED

SEPTEMBER 16, 2025

BY THE COMMON COUNCIL  
OF MADISON, WISCONSIN

PUBLIC IMPROVEMENT DESIGN  
APPROVED BY:

*[Signature]*

11/26/2025

City Engineer

Date

STREET  
DESIGNED BY:



11/26/2025

PAVEMENT MARKINGS  
DESIGNED BY:



11/26/2025

PLOT SCALE: 1 IN=1 FT\_XREF

PLOT NAME: ----

REV. DATE: 11/7/2025 12:34 PM

ORIGINATOR: CITY\_OF\_MADISON

AS DEFINED BY SECTION 107.13 OF THE CITY OF MADISON STANDARD SPECIFICATIONS FOR PUBLIC WORKS CONSTRUCTION, LATEST EDITION: NO EXCAVATION IS PERMITTED WITHIN 5 FEET OF THE TRUNK OF THE STREET TREE OR WHEN CUTTING ROOTS OVER 3 INCHES IN DIAMETER. IF EXCAVATION IS NECESSARY, THE CONTRACTOR SHALL CONTACT MADISON CITY FORESTRY (266-4816) PRIOR TO EXCAVATION. CITY OF MADISON FORESTRY PERSONNEL SHALL ASSESS THE IMPACT TO THE TREE AND TO ITS ROOT SYSTEM PRIOR TO WORK COMMENCING. TREE PROTECTION SPECIFICATIONS CAN BE FOUND ON THE FOLLOWING WEBSITE:  
[www.cityofmadison.com/engineering/developers-contractors/standard-specifications](http://www.cityofmadison.com/engineering/developers-contractors/standard-specifications)

NO TREES IN THE RIGHT OF WAY OR ON PUBLIC LANDS SHALL BE TRIMMED, PRUNED, REMOVED OR ADVERSELY AFFECTED IN ANY WAY UNTIL THE DEVELOPER HAS RECEIVED WRITTEN PERMISSION FROM THE CITY ENGINEER OR CITY FORESTER. SAID WRITTEN PERMISSION SHALL INCLUDE LANGUAGE INDICATING THAT SECTION 10.101 OF THE MADISON GENERAL ORDINANCES AND ADMINISTRATIVE PROCEDURE MEMORANDUM NO. 6-2, REFERRING TO NOTIFICATION OF PROPERTY OCCUPANTS AND/OR OWNERS, HAS BEEN COMPLIED WITH.

DEVELOPER MUST SUBMIT A TRAFFIC CONTROL PLAN TO CITY TRAFFIC ENGINEERING AT LEAST 14 DAYS PRIOR TO THE START OF WORK. WORK SHALL NOT PROCEED UNTIL AN APPROVED TRAFFIC CONTROL PLAN IS IN PLACE.

CONTACT THE PROJECT ENGINEER AND DESIGNER, GRECIA IZQUIERDO, AT GIZQUIERDO@CITYOFMADISON.COM FOR CAD FILES AND ALIGNMENT DATA PRIOR TO STAKING.

CONTACT THE CITY CONSTRUCTION ENGINEER, KYLE FRANK, AT KFRANK@CITYOFMADISON.COM FOR PRECONSTRUCTION SCHEDULING, COORDINATION, AND INSPECTION.

UNDERDRAINS SHALL BE INSTALLED PER STANDARD DETAIL DRAWING 4.05 FOR 75' ON EACH SIDE OF THE LOW POINT, OR TO THE NEAREST CURB HIGH POINT. ALL UNDERDRAIN SHALL BE WRAPPED.

ALL GUTTERS SHALL DRAIN WITH A MINIMUM GRADE OF 0.5% TOWARD STORM SEWER INLETS.

ALL DITCHES SHALL DRAIN WITH A MINIMUM GRADE OF 0.5%

THE CROSS SLOPE OF SIDEWALKS AND BARRIER FREE SIDEWALK CURB RAMPS SHALL TYPICALLY BE 1.5%. THE LONGITUDINAL GRADE OF BARRIER FREE SIDEWALK CURB RAMPS SHALL NOT EXCEED 8.33%. ALL SIDEWALK RAMPS SHALL BE CONSTRUCTED ACCORDING TO S.D.D. 3.04. AT ALL OTHER LOCATIONS THE LONGITUDINAL GRADE OF SIDEWALKS SHALL NOT EXCEED 5.0 % OR THE ADJACENT STREET GRADE WHICHEVER IS GREATER NOR BE LESS THAN 0.5% AND SHALL DRAIN TOWARD STORM SEWER INLETS. SIDE SLOPES WITHIN TEN FEET OF A PUBLIC SIDEWALK SHALL NOT EXCEED 4:1. ALL SIDEWALK AND SIDEWALK RAMP ELEVATIONS AND GRADES SHALL BE FIELD VERIFIED AND SET TO COMPLY WITH THE CITY OF MADISON STANDARD SPECIFICATIONS AND THE A.D.A. GUIDELINES.

CURB STATION AND OFFSETS SHALL BE TO THE EDGE OF PAVEMENT UNLESS OTHERWISE INDICATED. CURB ELEVATIONS SHALL BE TO THE EDGE OF PAVEMENT UNLESS OTHERWISE INDICATED.

POWER POLES AND OTHER OBSTRUCTIONS SHALL BE MOVED TO PROVIDE 2 FEET MINIMUM OF CLEAR DISTANCE FROM ANY FACE OF CURB OR EDGE OF SIDEWALK UNLESS OTHERWISE INDICATED ON THE PLANS.

ANY INFORMATION SHOWN ON THIS PLAN, WHICH IS NOT PART OF THIS RIGHT-OF-WAY PROJECT, IS PRELIMINARY AND NOT FOR CONSTRUCTION.

THERE MAY BE EXISTING UTILITIES OR OTHER FEATURES WHICH ARE EITHER NOT SHOWN OR SHOWN INCORRECTLY ON THIS PLAN. IT IS THE RESPONSIBILITY OF THE DEVELOPER TO LOCATE AND IDENTIFY ALL UTILITIES AND TOPOGRAPHY WHICH MAY AFFECT THE CONSTRUCTION OF THESE IMPROVEMENTS.

ALL PERMANENT SIGNING AND POSTING WILL BE DETERMINED AND PROVIDED BY THE TRAFFIC ENGINEERING DIVISION, FOLLOWING CONSTRUCTION OF THESE IMPROVEMENTS.

THE DEVELOPER SHALL PROVIDE, INSTALL AND MAINTAIN ALL STREET END BARRICADES, SIGNING AND TRAFFIC CONTROL, AS REQUIRED BY THE CITY TRAFFIC ENGINEER.

PAVEMENT SAWCUTS SHALL BE AS DIRECTED BY THE CITY CONSTRUCTION ENGINEER. SAWCUTS SHOWN ON THE PLAN ARE APPROXIMATE.

CURB ON CUL DE SACS SHALL BE INSTALLED ACCORDING TO S.D.D. 3.05.

ALL WORK IN THE RIGHT OF WAY AND PUBLIC EASEMENTS SHALL BE IN ACCORDANCE WITH THE CITY OF MADISON STANDARD SPECIFICATIONS FOR PUBLIC WORKS CONSTRUCTION LATEST EDITION.

ALL PROPOSED IMPROVEMENTS IN THE RIGHT-OF-WAY ARE BASED ON SURVEY DATA PROVIDED BY THE DEVELOPER OR ITS CONSULTANT. IN THE CASE THAT THE PROPOSED IMPROVEMENTS CAN NOT BE INSTALLED PER THESE PLANS OR THE CITY OF MADISON STANDARD SPECIFICATION FOR PUBLIC WORKS CONSTRUCTION, LATEST EDITION, THE DEVELOPER SHALL BE RESPONSIBLE FOR THE COST OF EXTRA WORK DUE TO INACCURACIES OF THE SURVEY.

ALL UTILITY VERIFICATIONS AND ACCURACY OF THE DRAWINGS ARE THE RESPONSIBILITY OF THE DEVELOPER. ANY CONFLICTS THAT ARISE FROM MISSING OR ERRONEOUS INFORMATION WILL BE AT THE EXPENSE OF THE DEVELOPER. NO PRECAST STRUCTURES WILL BE APPROVED FOR STORM OR SANITARY SEWER UNTIL ALL POTENTIAL UTILITY CONFLICTS ARE RESOLVED.

CONVENTIONAL SIGNS

FIELD VERIFY ALL UTILITY LOCATIONS

GAS

STORM SEWER

SANITARY SEWER

WATER

BURIED ELECTRIC

OVERHEAD ELECTRIC

POWER POLE

ADA COMPLIANT RAMP W/  
DETECTABLE WARNING FIELD

COMBUSTIBLE FLUIDS

— G —

— ST —

— SN —

— W —

— E —

— OH —

15922

MADISON, WI

9685

15922

3565 TULANE AVENUE CSM

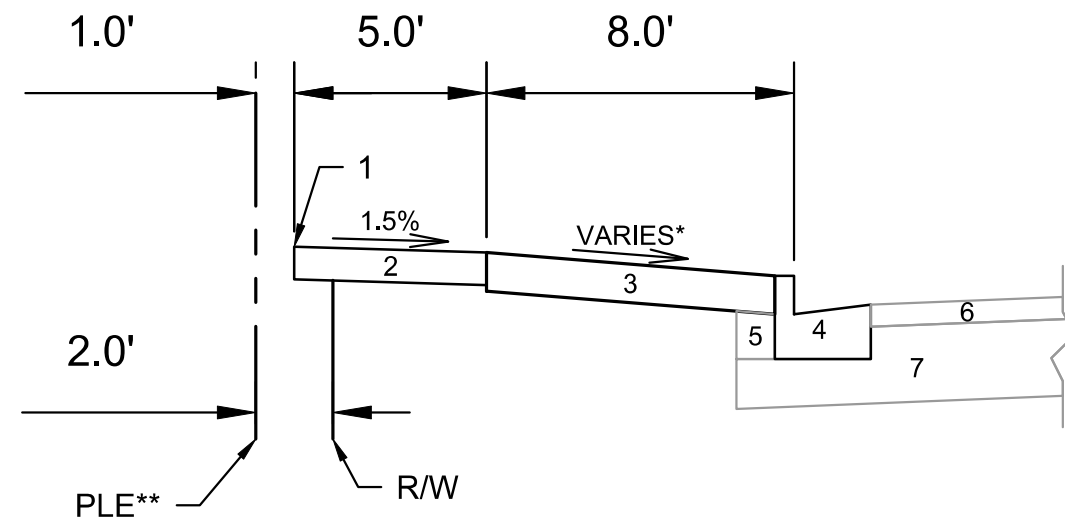
M:\DESIGN\Projects\15922\CAD\Streets\15922EN-Details.dwg

15922

D-1

15922

D-1



**SPECIAL NOTES:**

- \* SEE SHEETS P-1 AND X-1 FOR WIDTHS AND SLOPES
- \*\* SEE DOC NO. 6058037 FOR PLE LOCATION

- 1 POINT REFERRED TO ON PROFILE
- 2 5" CONCRETE SIDEWALK
- 3 6" TOPOSIL, SEEDING AND MATTING
- 4 TYPE 'A' CONCRETE CURB AND GUTTER. REPLACE AT LOCATIONS SHOWN IN P-SHEETS OR AS DETERMINED BY CITY CONSTRUCTION ENGINEER
- 5 EXISTING FILL TO REMAIN. INSTALL AT CURB REPLACEMENT LOCATIONS
- 6 EXISTING H.M.A. PAVEMENT TO REMAIN
- 7 EXISTING BASE COURSE TO REMAIN



15922

D-2

TYPICAL SECTIONS

3565 TULANE AVENUE CSM

M:\DESIGN\Projects\15922\CAD\Streets\15922EN-Details.dwg

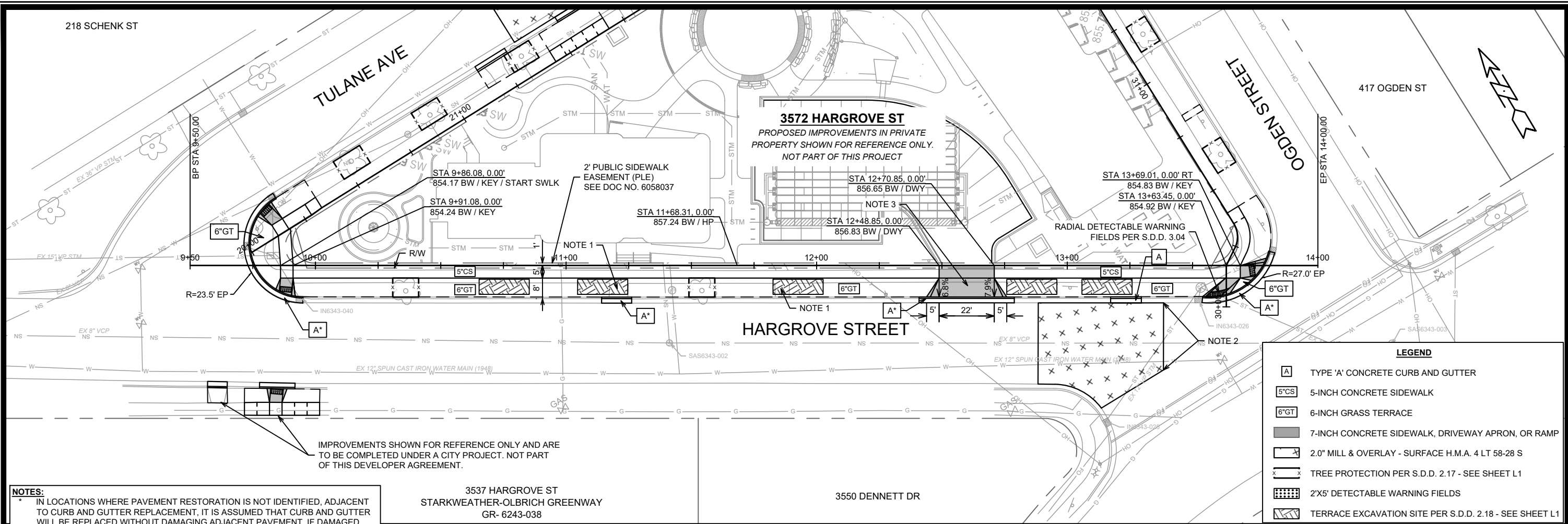
15922

MADISON, WI

9685

CONTRACT NO:

MARK	REVISION	DATE	BY
15922	11/7/2025 12:47 PM	Scale:	D-2



**NOTES:**

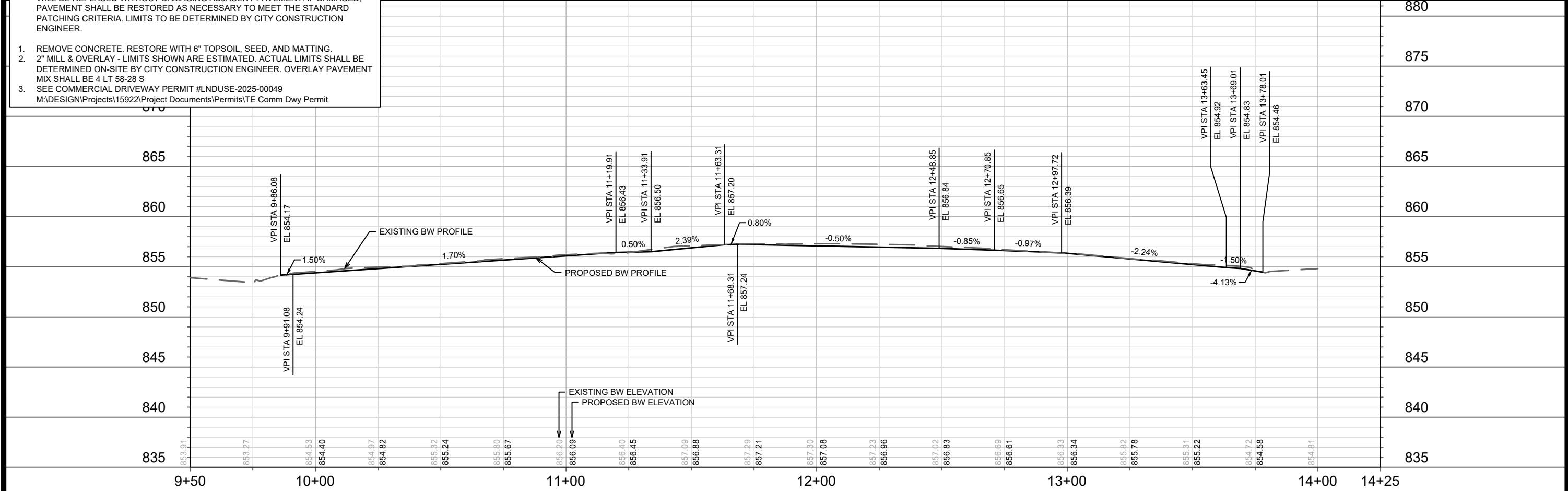
\* IN LOCATIONS WHERE PAVEMENT RESTORATION IS NOT IDENTIFIED, ADJACENT TO CURB AND GUTTER REPLACEMENT, IT IS ASSUMED THAT CURB AND GUTTER WILL BE REPLACED WITHOUT DAMAGING ADJACENT PAVEMENT. IF DAMAGED, PAVEMENT SHALL BE RESTORED AS NECESSARY TO MEET THE STANDARD PATCHING CRITERIA. LIMITS TO BE DETERMINED BY CITY CONSTRUCTION ENGINEER.

1. REMOVE CONCRETE. RESTORE WITH 6" TOPSOIL, SEED, AND MATTING.

2. 2" MILL & OVERLAY - LIMITS SHOWN ARE ESTIMATED. ACTUAL LIMITS SHALL BE DETERMINED ON-SITE BY CITY CONSTRUCTION ENGINEER. OVERLAY PAVEMENT MIX SHALL BE 4 LT 58-28 S

3. SEE COMMERCIAL DRIVEWAY PERMIT #LNDUSE-2025-00049

M:\DESIGN\Projects\15922\Project Documents\Permits\TE Comm Dwy Permit



LEGEND	
	TYPE 'A' CONCRETE CURB AND GUTTER
	5-INCH CONCRETE SIDEWALK
	6-INCH GRASS TERRACE
	7-INCH CONCRETE SIDEWALK, DRIVEWAY APRON, OR RAMP
	2.0" MILL & OVERLAY - SURFACE H.M.A. 4 LT 58-28 S
	TREE PROTECTION PER S.D.D. 2.17 - SEE SHEET L1
	2'X5' DETECTABLE WARNING FIELDS
	TERRACE EXCAVATION SITE PER S.D.D. 2.18 - SEE SHEET L1

15922

MADISON, WI

CONTRACT NO: 9685

PLAN & PROFILE - HARGROVE STREET

3565 TULANE AVENUE CSM

15922

P-1

MARK

REVISION

DATE

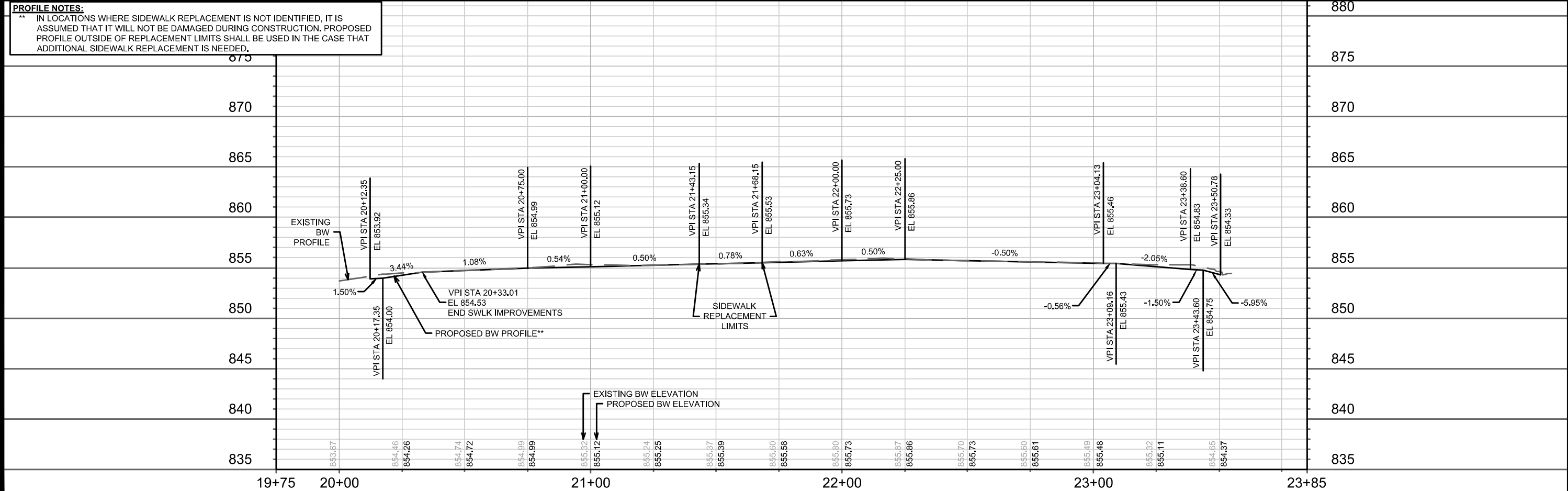
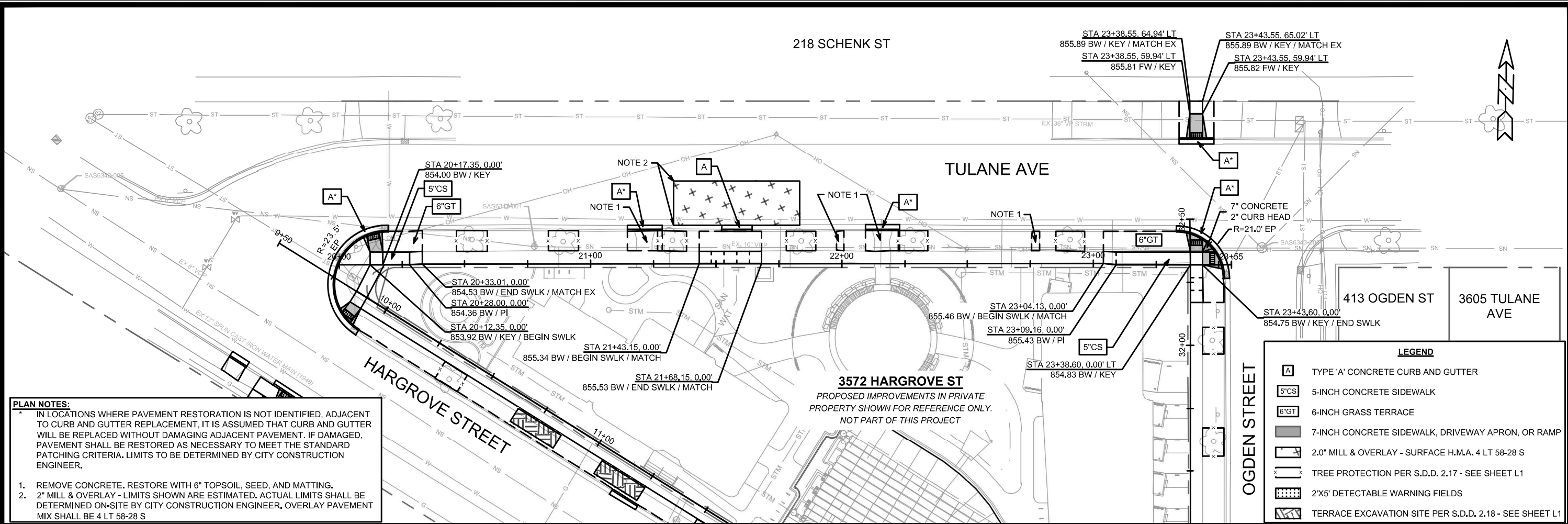
BY

Designed By: GCIT

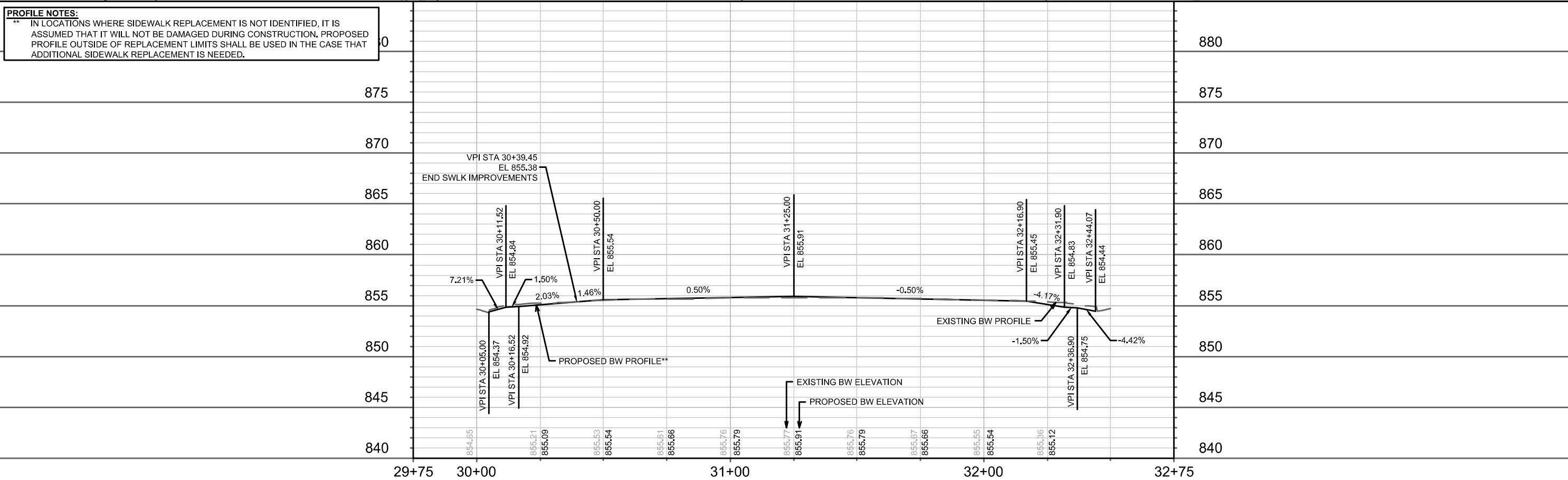
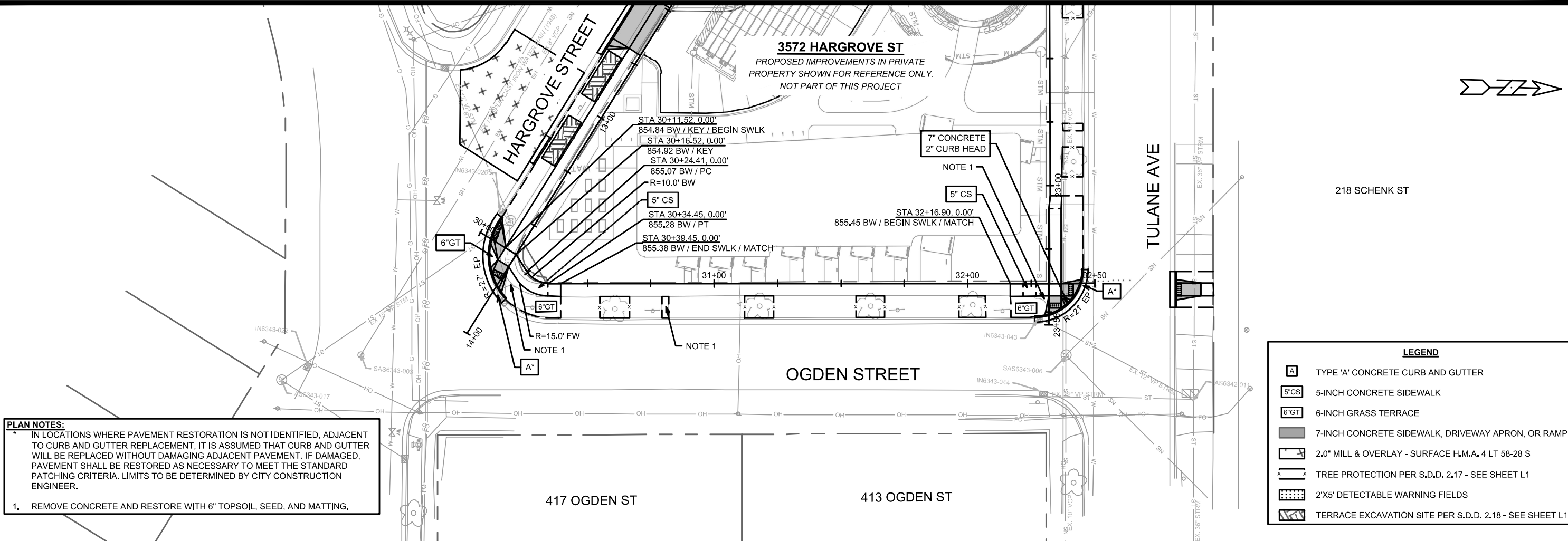
Date: 12/4/2025 12:35 PM

Scale: 1" = 40'

P-1



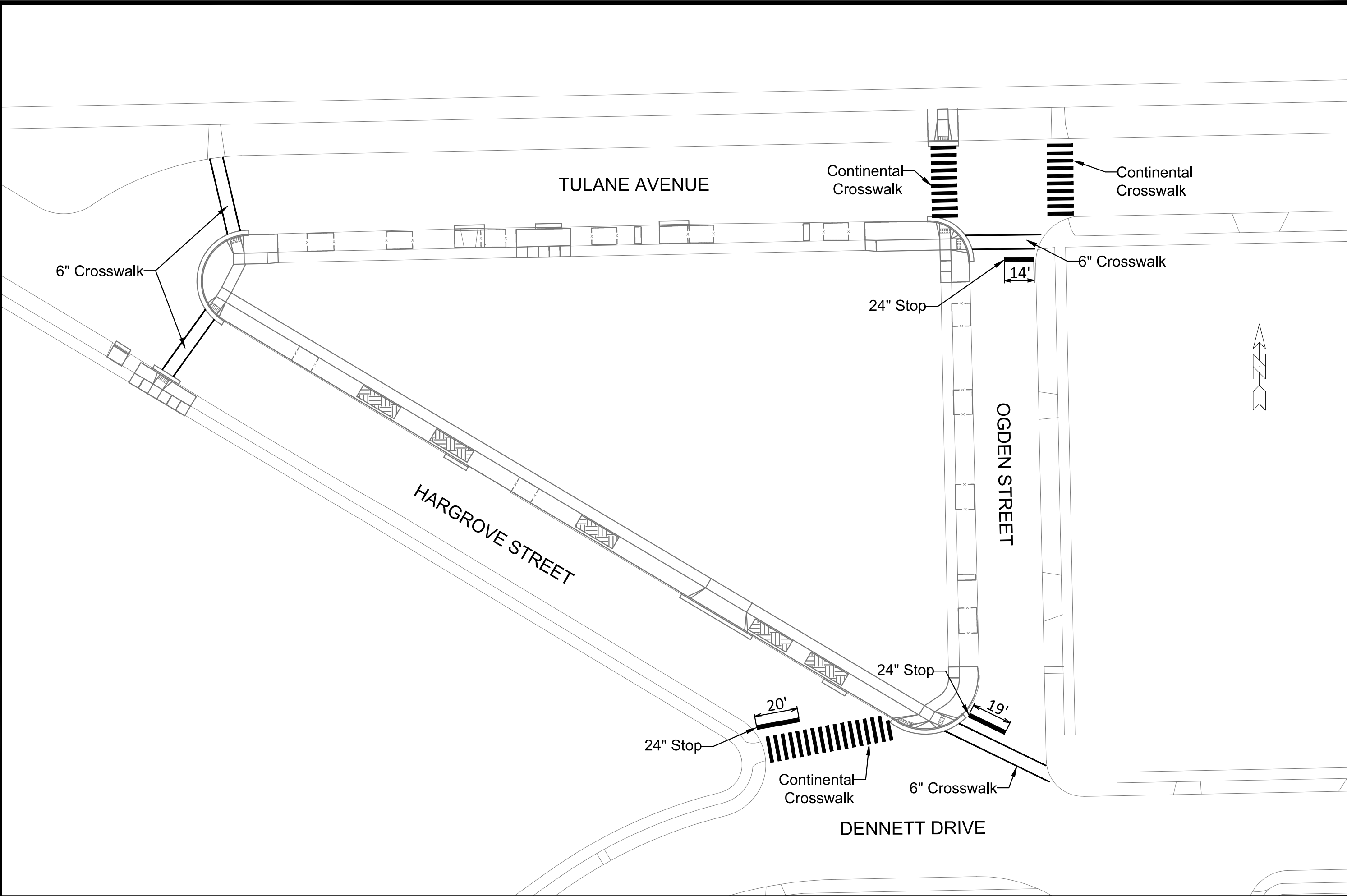
15922	MADISON, WI	9685	CONTRACT NO:
PLAN & PROFILE - TULANE AVENUE			
3565 TULANE AVENUE CSM			
M:\DESIGN\Projects\15922\CAD\Streets\15922EN-P-P.dwg			
15922			
P-2			




15922	MADISON, WI	9685	15922	P-3
PLAN & PROFILE - OGDEN STREET 3565 TULANE AVENUE CSM M:\DESIGN\Projects\15922\CAD\Streets\15922EN-P-P.dwg				
CONTRACT NO: 15922				
15922 P-3				



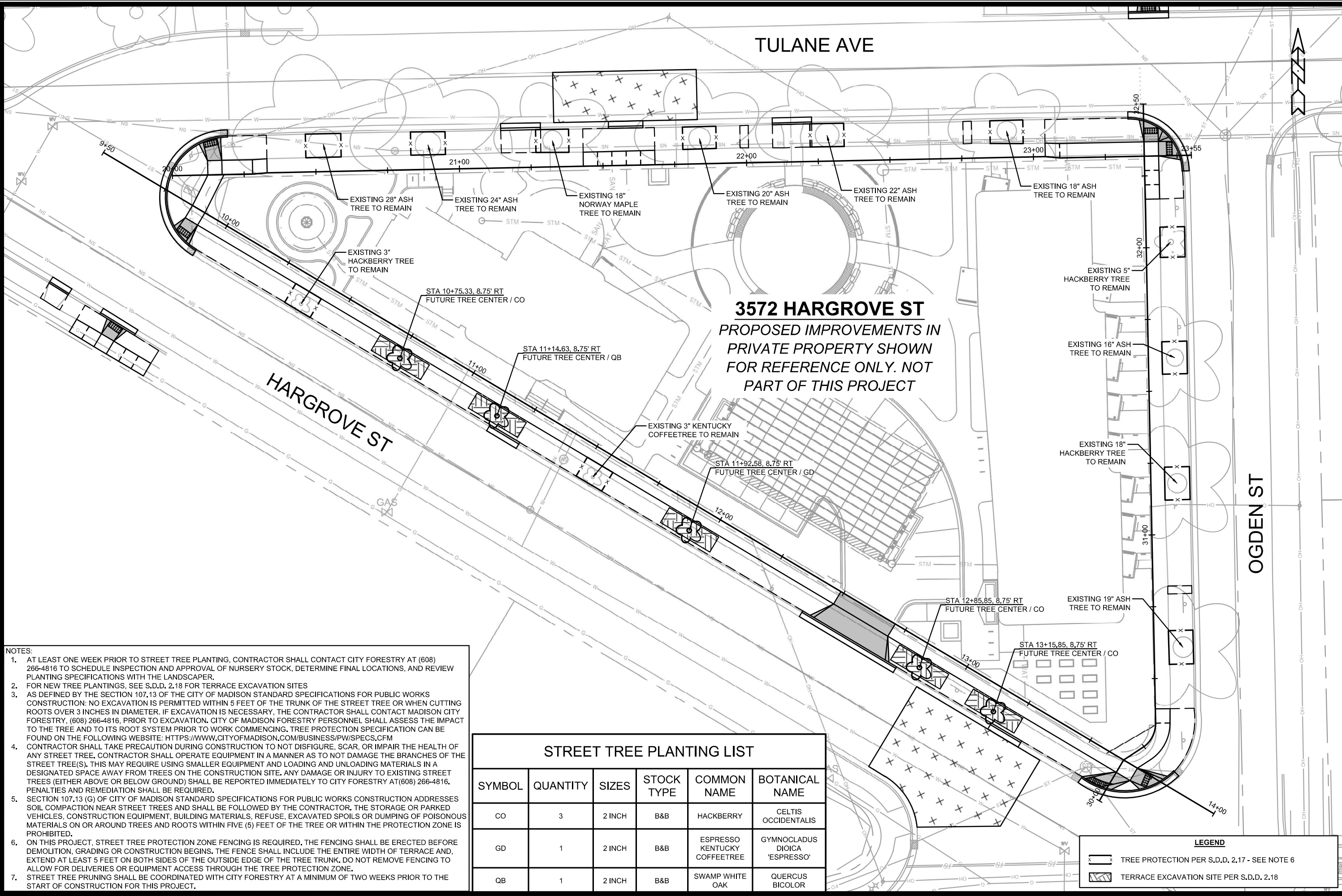




PAVEMENT MARKING PLAN		15922	
3565 TULANE AVENUE		MADISON, WI	
M:\DESIGN\Traffic\Maps_Plans\SM-Plans\Sign-Mark Basemap.dwg		CONTRACT NO: ----	
		15922	
		PM-1	

MARK	REVISION	DATE	BY
15922	15922	6/20/2024	3:32 PM
Designed By: SDM			Scale: 1"=40'
			PM-1





- NOTES:
1. AT LEAST ONE WEEK PRIOR TO STREET TREE PLANTING, CONTRACTOR SHALL CONTACT CITY FORESTRY AT (608) 266-4816 TO SCHEDULE INSPECTION AND APPROVAL OF NURSERY STOCK, DETERMINE FINAL LOCATIONS, AND REVIEW PLANTING SPECIFICATIONS WITH THE LANDSCAPER.
  2. FOR NEW TREE PLANTINGS, SEE S.D.D. 2.18 FOR TERRACE EXCAVATION SITES
  3. AS DEFINED BY THE SECTION 107.13 OF THE CITY OF MADISON STANDARD SPECIFICATIONS FOR PUBLIC WORKS CONSTRUCTION: NO EXCAVATION IS PERMITTED WITHIN 5 FEET OF THE TRUNK OF THE STREET TREE OR WHEN CUTTING ROOTS OVER 3 INCHES IN DIAMETER. IF EXCAVATION IS NECESSARY, THE CONTRACTOR SHALL CONTACT MADISON CITY FORESTRY, (608) 266-4816, PRIOR TO EXCAVATION. CITY OF MADISON FORESTRY PERSONNEL SHALL ASSESS THE IMPACT TO THE TREE AND TO ITS ROOT SYSTEM PRIOR TO WORK COMMENCING. TREE PROTECTION SPECIFICATION CAN BE FOUND ON THE FOLLOWING WEBSITE: [HTTPS://WWW.CITYOFMADISON.COM/BUSINESS/PW/SPECS.CFM](https://www.cityofmadison.com/business/pw/specs.cfm)
  4. CONTRACTOR SHALL TAKE PRECAUTION DURING CONSTRUCTION TO NOT DISFIGURE, SCAR, OR IMPAIR THE HEALTH OF ANY STREET TREE. CONTRACTOR SHALL OPERATE EQUIPMENT IN A MANNER AS TO NOT DAMAGE THE BRANCHES OF THE STREET TREE(S). THIS MAY REQUIRE USING SMALLER EQUIPMENT AND LOADING AND UNLOADING MATERIALS IN A DESIGNATED SPACE AWAY FROM TREES ON THE CONSTRUCTION SITE. ANY DAMAGE OR INJURY TO EXISTING STREET TREES (EITHER ABOVE OR BELOW GROUND) SHALL BE REPORTED IMMEDIATELY TO CITY FORESTRY AT (608) 266-4816. PENALTIES AND REMEDIATION SHALL BE REQUIRED.
  5. SECTION 107.13 (G) OF CITY OF MADISON STANDARD SPECIFICATIONS FOR PUBLIC WORKS CONSTRUCTION ADDRESSES SOIL COMPACTION NEAR STREET TREES AND SHALL BE FOLLOWED BY THE CONTRACTOR. THE STORAGE OR PARKED VEHICLES, CONSTRUCTION EQUIPMENT, BUILDING MATERIALS, REFUSE, EXCAVATED SPOILS OR DUMPING OF POISONOUS MATERIALS ON OR AROUND TREES AND ROOTS WITHIN FIVE (5) FEET OF THE TREE OR WITHIN THE PROTECTION ZONE IS PROHIBITED.
  6. ON THIS PROJECT, STREET TREE PROTECTION ZONE FENCING IS REQUIRED. THE FENCING SHALL BE ERECTED BEFORE DEMOLITION, GRADING OR CONSTRUCTION BEGINS. THE FENCE SHALL INCLUDE THE ENTIRE WIDTH OF TERRACE AND, EXTEND AT LEAST 5 FEET ON BOTH SIDES OF THE OUTSIDE EDGE OF THE TREE TRUNK. DO NOT REMOVE FENCING TO ALLOW FOR DELIVERIES OR EQUIPMENT ACCESS THROUGH THE TREE PROTECTION ZONE.
  7. STREET TREE PRUNING SHALL BE COORDINATED WITH CITY FORESTRY AT A MINIMUM OF TWO WEEKS PRIOR TO THE START OF CONSTRUCTION FOR THIS PROJECT.

STREET TREE PLANTING LIST					
SYMBOL	QUANTITY	SIZES	STOCK TYPE	COMMON NAME	BOTANICAL NAME
CO	3	2 INCH	B&B	HACKBERRY	CELTIS OCCIDENTALIS
GD	1	2 INCH	B&B	ESPRESSO KENTUCKY COFFEETREE	GYMNOCLADUS DIOICA 'ESPRESSO'
QB	1	2 INCH	B&B	SWAMP WHITE OAK	QUERCUS BICOLOR

LEGEND

TREE PROTECTION PER S.D.D. 2.17 - SEE NOTE 6

TERRACE EXCAVATION SITE PER S.D.D. 2.18

15922

MADISON, WI

3565 TULANE AVENUE CSM

15922

L-1

LANDSCAPING PLAN

15922EN-LandscapingPlan.dwg

REVISION

MARK

DATE

BY

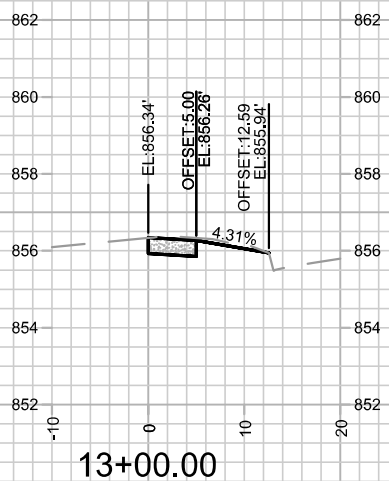
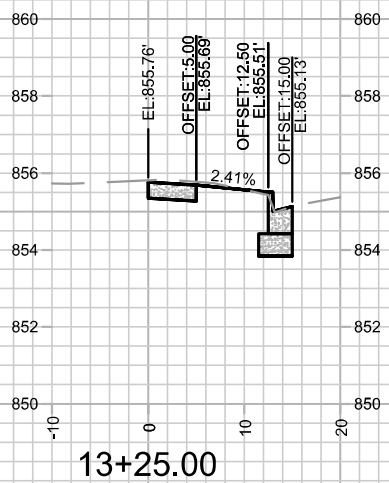
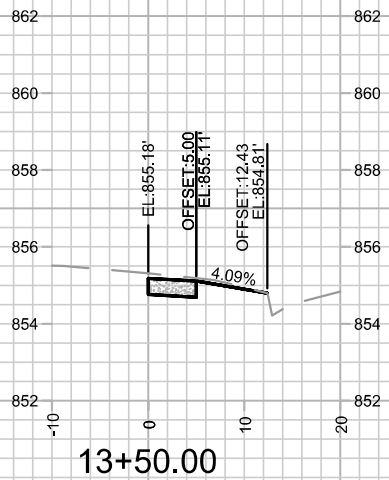
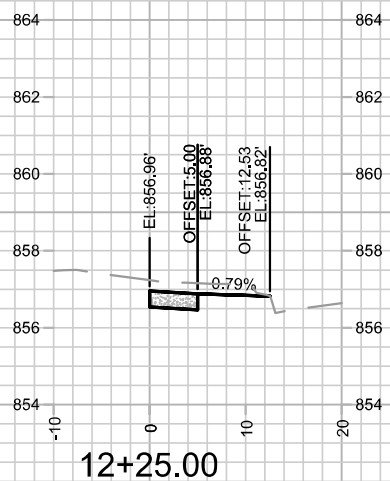
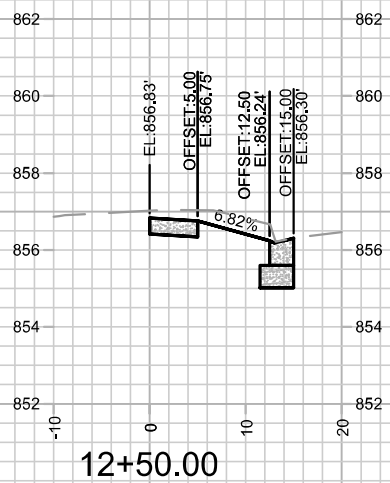
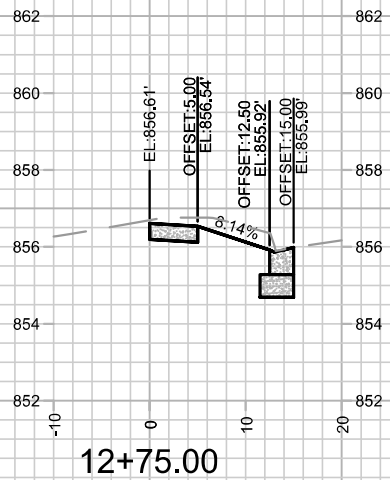
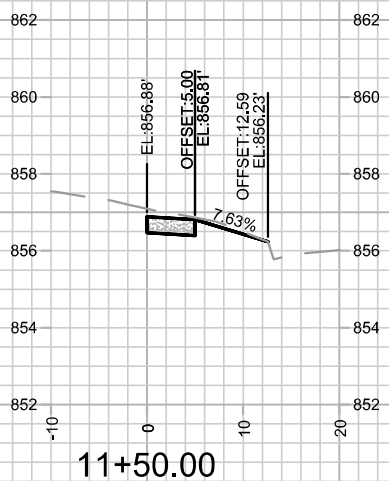
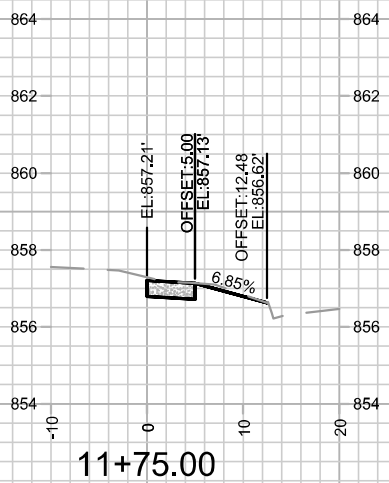
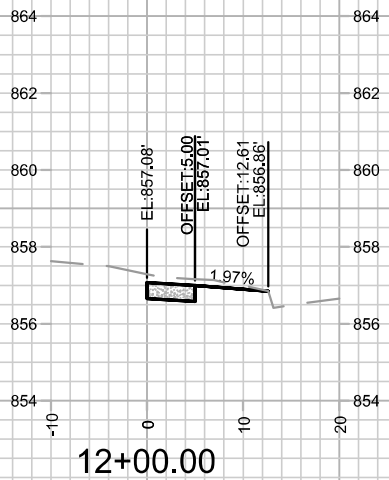
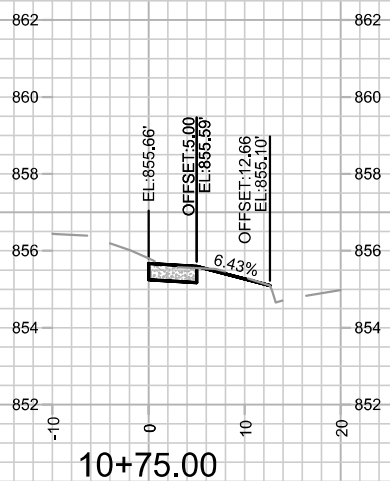
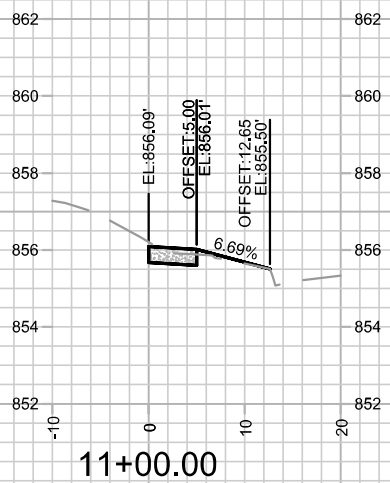
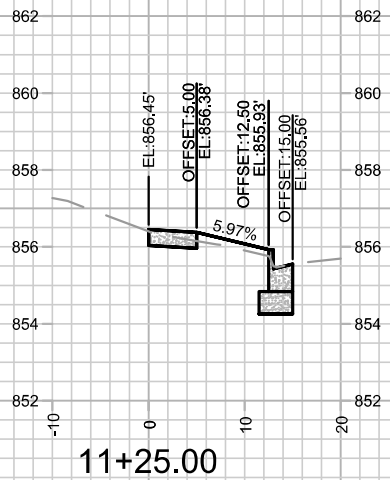
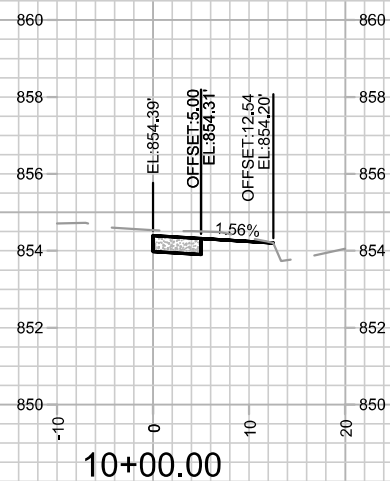
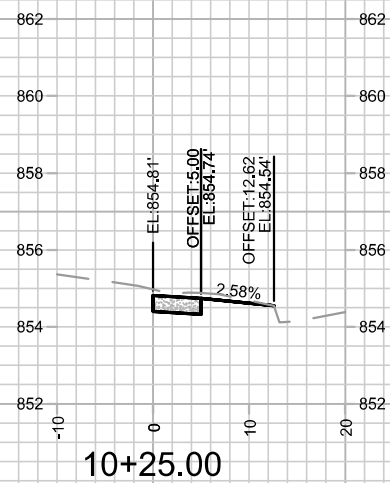
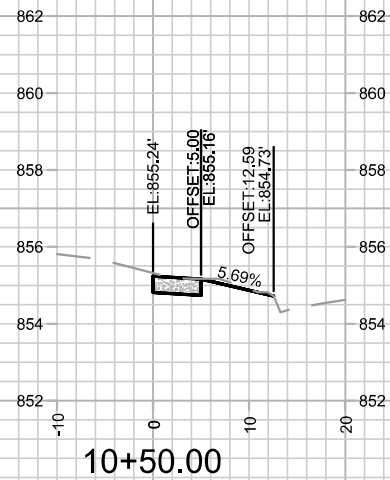
15922

9685

CONTRACT NO:

11/7/2025 2:02 PM

Scale: 1" = 30'



CROSS SECTIONS - HARGROVE STREET  
3565 TULANE AVENUE CSM

15922  
MADISON, WI

CONTRACT NO:

9685

M:\DESIGN\Projects\15922\CAD\Streets\15922EN-Xsections.dwg

MARK	REVISION	DATE	BY
---	---	---	---
---	---	---	---
---	---	---	---
---	---	---	---

Designed By: GCIT  
Date: 10/28/2025 9:19 AM  
Scale: 1" = 20'

15922

X-1

15922  
X-1