



Madison, Wisconsin

# CITY OF MADISON

## CITY ENGINEERING DIVISION

### DEPARTMENT OF PUBLIC WORKS

# PLAN OF PROPOSED IMPROVEMENT

INDEX OF SHEETS

SHEET NO. D1	STANDARD NOTES
SHEET NO. D2	TYPICAL SECTIONS
SHEET NO. P1-P2	PLAN & PROFILES
SHEET NO. U1	UTILITY PLAN
SHEET NO. PM1	PAVEMENT MARKING PLAN
SHEET NO. L1	LANDSCAPING PLAN
SHEET NO. X1-X4	CROSS SECTIONS
CITY MAINTENANCE PLAN NOT REQUIRED	

## 3310 COMMERCIAL AVENUE

CITY PROJECT NO. 16074  
CONTRACT NO. 9719

PROJECT  
LOCATION



PUBLIC IMPROVEMENT PROJECT  
APPROVED

JANUARY 27, 2026

BY THE COMMON COUNCIL  
OF MADISON, WISCONSIN

PUBLIC IMPROVEMENT DESIGN  
APPROVED BY:

04/17/2026

City Engineer

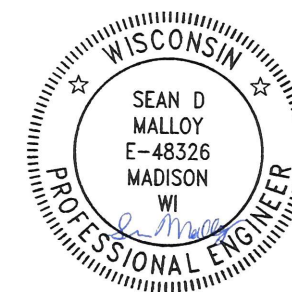
Date

STREET  
DESIGNED BY:



04/17/2026

PAVEMENT MARKING  
DESIGNED BY:



04/17/2026

SANITARY SEWER  
DESIGNED BY:

LATERALS  
ONLY

STORM SEWER  
DESIGNED BY:

LATERALS  
ONLY

WATER  
DESIGNED BY:

LATERALS  
ONLY

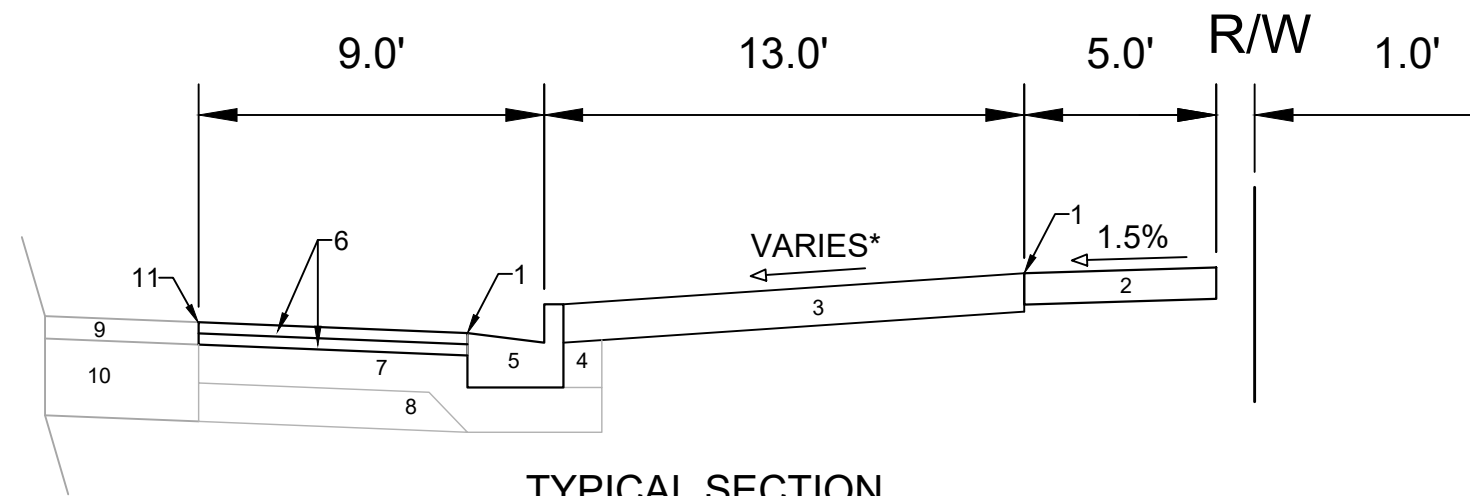
PLOT SCALE: 1 IN. = 1 FT. XREF

PLOT NAME: ---

REV. DATE: 4/13/2026 11:27 AM

ORIGINATOR: CITY\_OF\_MADISON



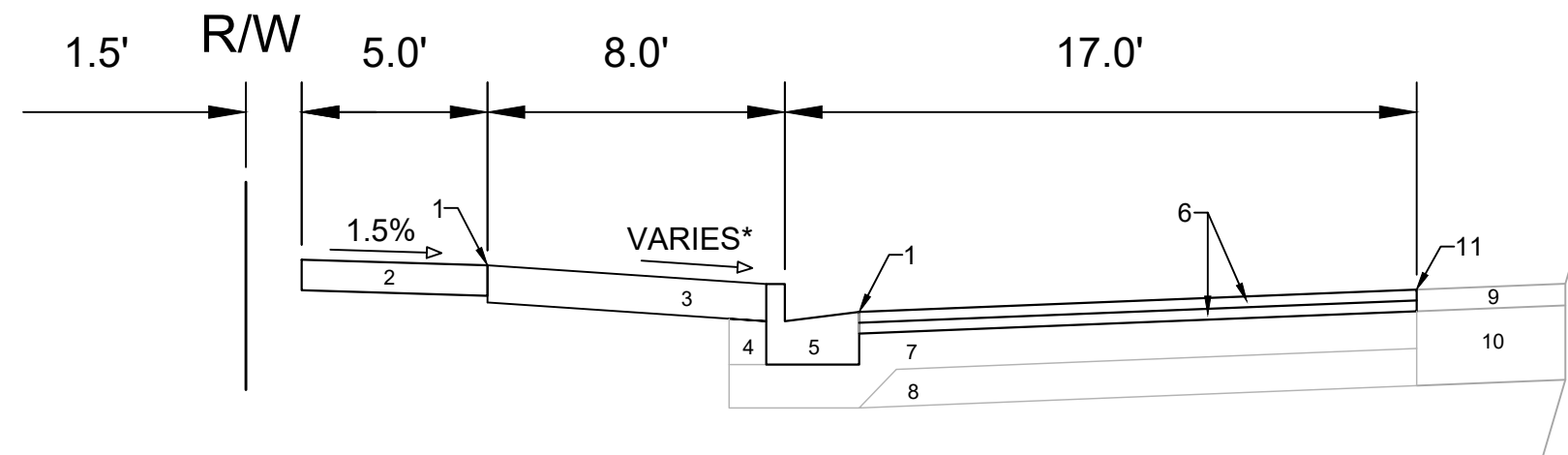


**TYPICAL SECTION  
BURKE AVENUE**

- 1 POINT REFERRED TO ON PROFILE FOR FRONT OF SIDEWALK AND EDGE OF PAVEMENT
- 2 5" CONCRETE SIDEWALK, 7" CONCRETE ADJACENT TO DRIVEWAYS
- 3 6" TOPSOIL, SEED AND MATTING
- 4 FILL
- 5 TYPE 'A' CONCRETE CURB & GUTTER
- 6 1.75" ASPHALTIC PAVEMENT 4 LT 58-28 S
- 7 6" CRUSHED AGGREGATE BASE COURSE GRADATION 2
- 8 6" CRUSHED AGGREGATE BASE COURSE GRADATION 1
- 9 EX. PAVEMENT SURFACE TO REMAIN
- 10 EX. ROAD BASE COURSE TO REMAIN
- 11 SAWCUT PAVEMENT LOCATION

**SPECIAL NOTES:**

\* SEE X-SHEETS AND P-SHEETS FOR CROSS SECTIONS AND SLOPES



**TYPICAL SECTION  
COMMERCIAL AVENUE**

- 1 POINT REFERRED TO ON PROFILE FOR FRONT OF SIDEWALK AND EDGE OF PAVEMENT
- 2 5" CONCRETE SIDEWALK, 7" CONCRETE ADJACENT TO DRIVEWAYS
- 3 6" TOPSOIL, SEED AND MATTING
- 4 FILL
- 5 TYPE 'A' CONCRETE CURB & GUTTER
- 6 1.75" ASPHALTIC PAVEMENT 4 LT 58-28 S
- 7 6" CRUSHED AGGREGATE BASE COURSE GRADATION 2
- 8 6" CRUSHED AGGREGATE BASE COURSE GRADATION 1
- 9 EX. PAVEMENT SURFACE TO REMAIN
- 10 EX. ROAD BASE COURSE TO REMAIN
- 11 SAWCUT PAVEMENT LOCATION

**SPECIAL NOTES:**

\* SEE X-SHEETS AND P-SHEETS FOR CROSS SECTIONS AND SLOPES

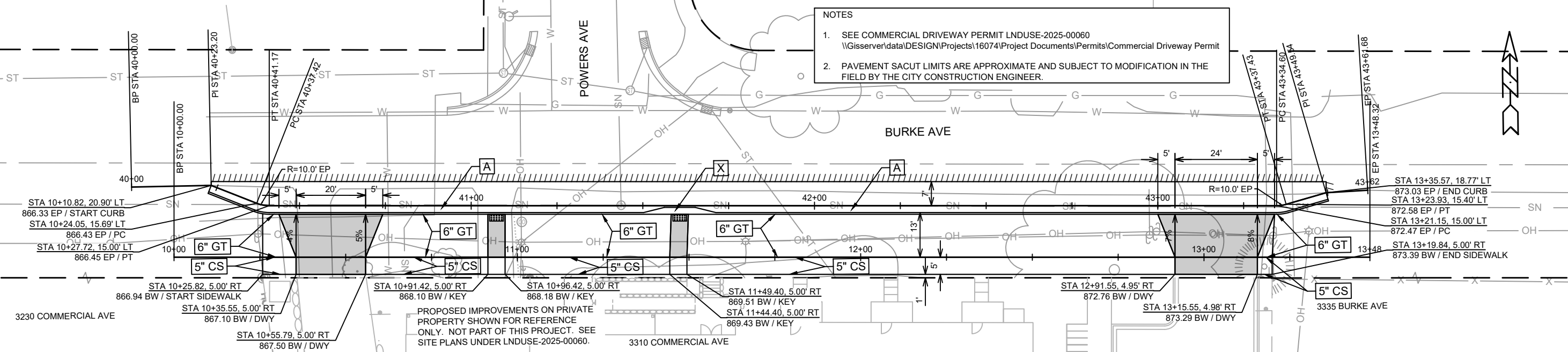
DATE	BY
REVISION	DATE
16074	16074
Designed By: N.J.	Date: 4/16/2026 9:05 AM
Scale:	D-2

16074  
MADISON, WI  
9719  
CONTRACT NO:

TYPICAL SECTIONS  
3310 COMMERCIAL AVENUE  
M:\DESIGN\Projects\16074\CAD\Streets\16074EN-Details.dwg



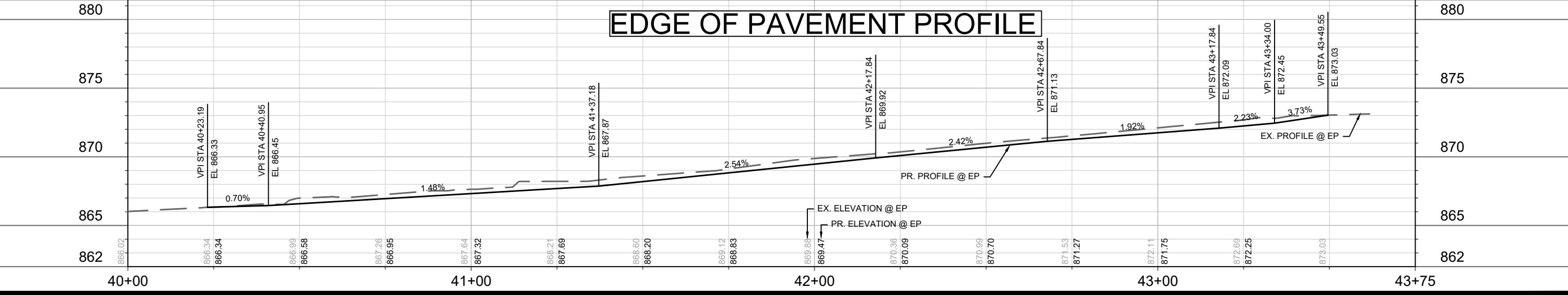
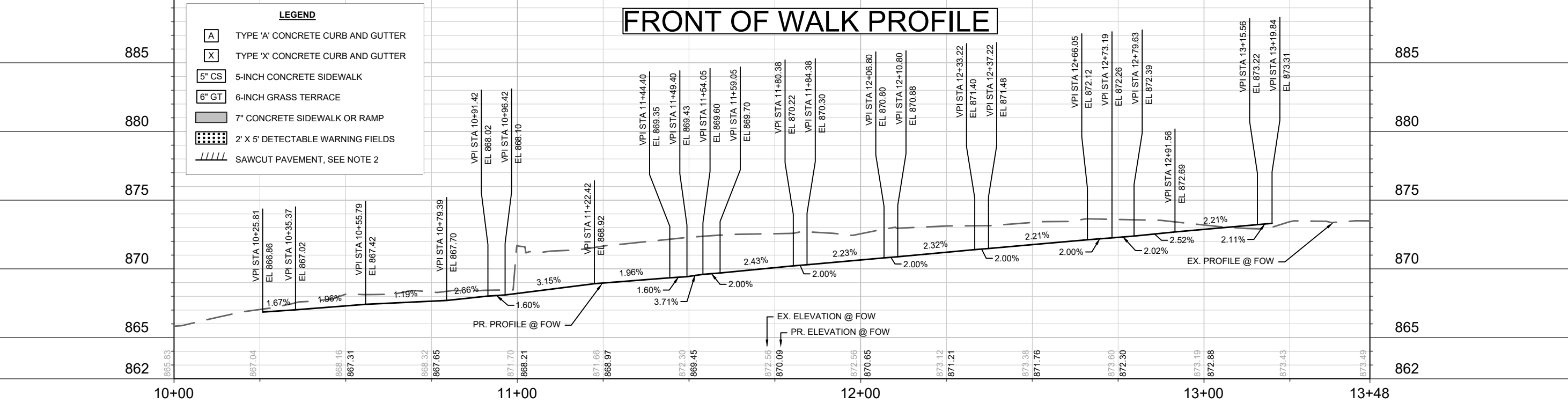
16074  
D-2



**NOTES**

- SEE COMMERCIAL DRIVEWAY PERMIT LNDUSE-2025-00060  
 \\Gisserver\data\DESIGN\Projects\16074\Project Documents\Permits\Commercial Driveway Permit
- PAVEMENT SACUT LIMITS ARE APPROXIMATE AND SUBJECT TO MODIFICATION IN THE FIELD BY THE CITY CONSTRUCTION ENGINEER.

DATE	BY
REVISION	
MARK	
Designed By: NJL	Date: 4/16/2026 9:06 AM
16074	P-1



16074  
MADISON, WI  
3310 COMMERCIAL AVENUE

PLAN AND PROFILE - BURKE AVENUE

CONTRACT NO: 9719

M:\DESIGN\Projects\16074\CAD\Streets\16074EN-PrP.dwg

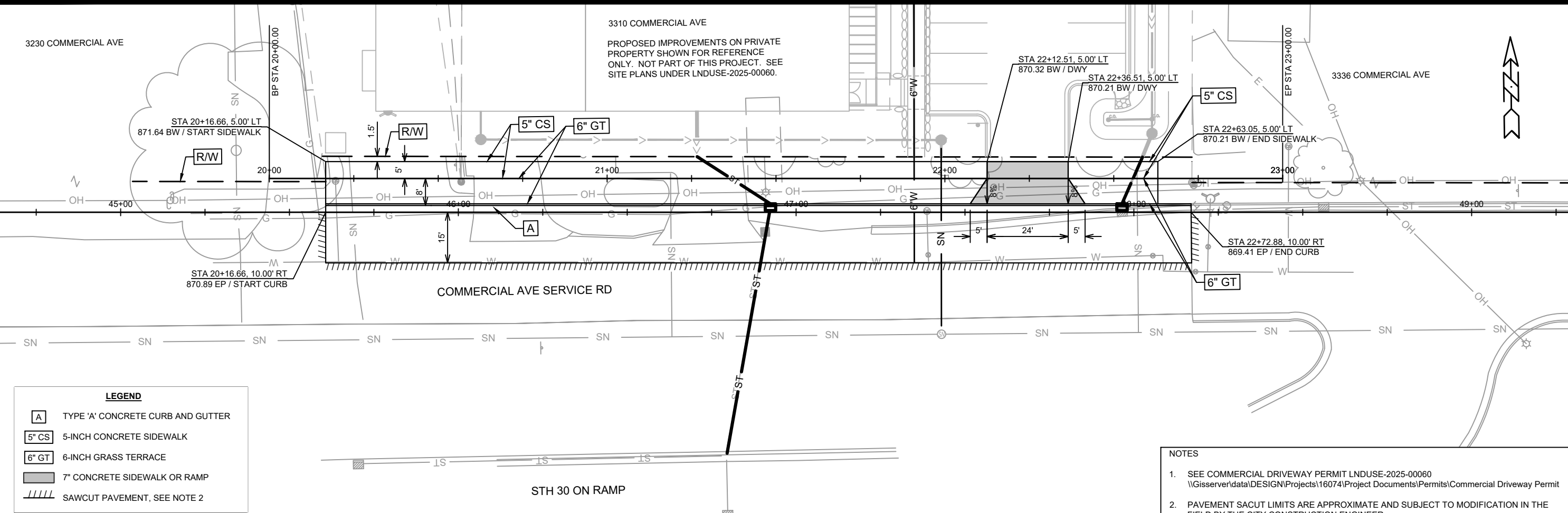
16074  
P-1

3230 COMMERCIAL AVE

3310 COMMERCIAL AVE

PROPOSED IMPROVEMENTS ON PRIVATE PROPERTY SHOWN FOR REFERENCE ONLY. NOT PART OF THIS PROJECT. SEE SITE PLANS UNDER LNDUSE-2025-00060.

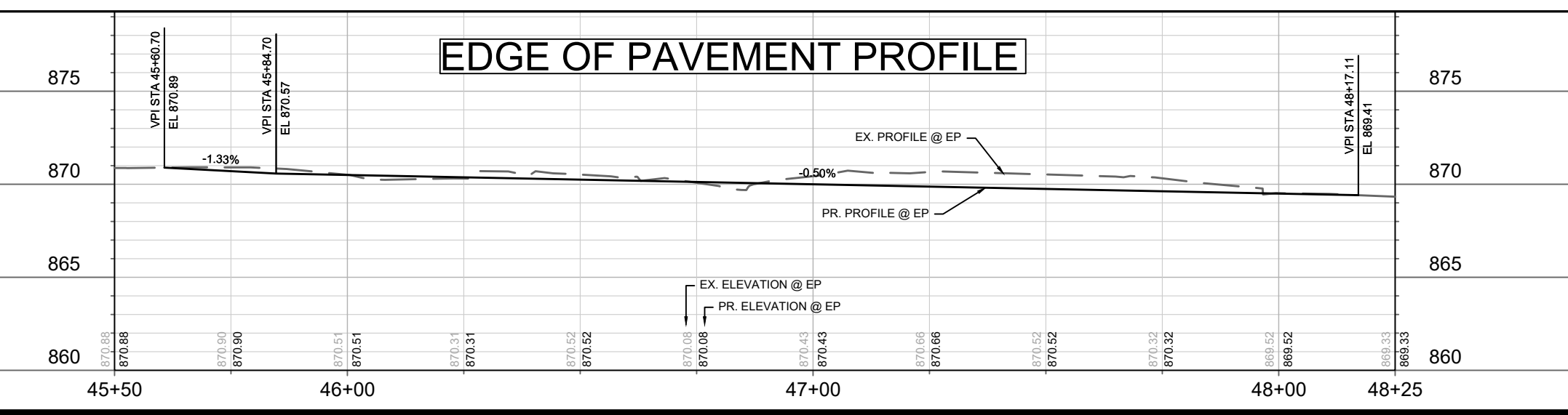
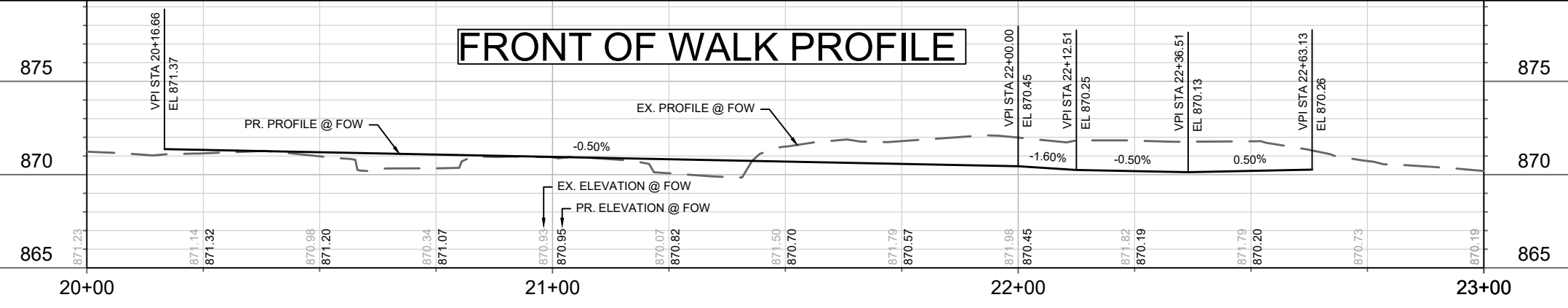
3336 COMMERCIAL AVE



**LEGEND**

[A]	TYPE 'A' CONCRETE CURB AND GUTTER
[5" CS]	5-INCH CONCRETE SIDEWALK
[6" GT]	6-INCH GRASS TERRACE
[7" CS]	7" CONCRETE SIDEWALK OR RAMP
[////]	SAWCUT PAVEMENT, SEE NOTE 2

- NOTES**
- SEE COMMERCIAL DRIVEWAY PERMIT LNDUSE-2025-00060  
\\Gisserver\data\DESIGN\Projects\16074\Project Documents\Permits\Commercial Driveway Permit
  - PAVEMENT SAWCUT LIMITS ARE APPROXIMATE AND SUBJECT TO MODIFICATION IN THE FIELD BY THE CITY CONSTRUCTION ENGINEER.



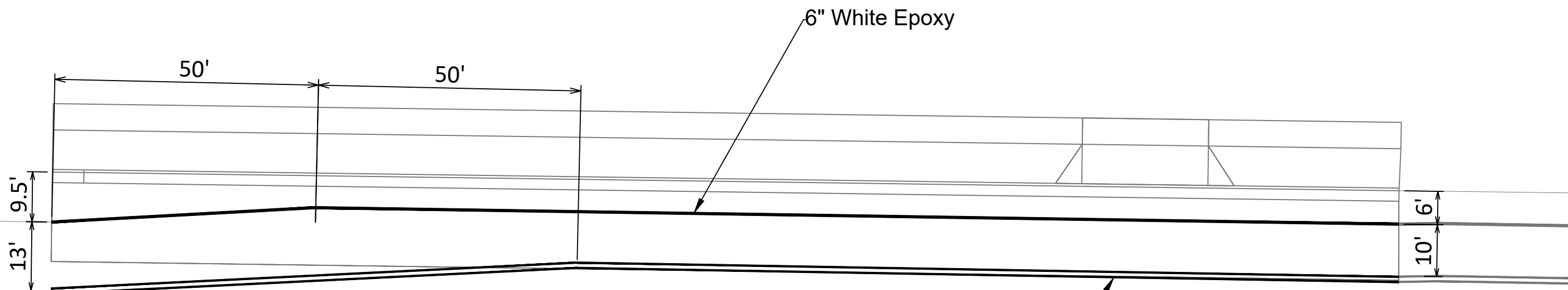
DATE	BY
REVISION	
MARK	
Designed By: NJJ	Date: 4/16/2026 9:06 AM
16074	P-2

16074  
MADISON, WI  
CONTRACT NO: 9719

PLAN AND PROFILE - COMMERCIAL AVENUE  
3310 COMMERCIAL AVENUE  
M:\DESIGN\Projects\16074\CAD\Streets\16074EN-PnP.dwg

16074  
P-2





3310 COMMERCIAL AVENUE

COMMERCIAL AVENUE

STH 30

6" White Epoxy

4" Double Yellow Epoxy



MARK	REVISION	DATE	BY

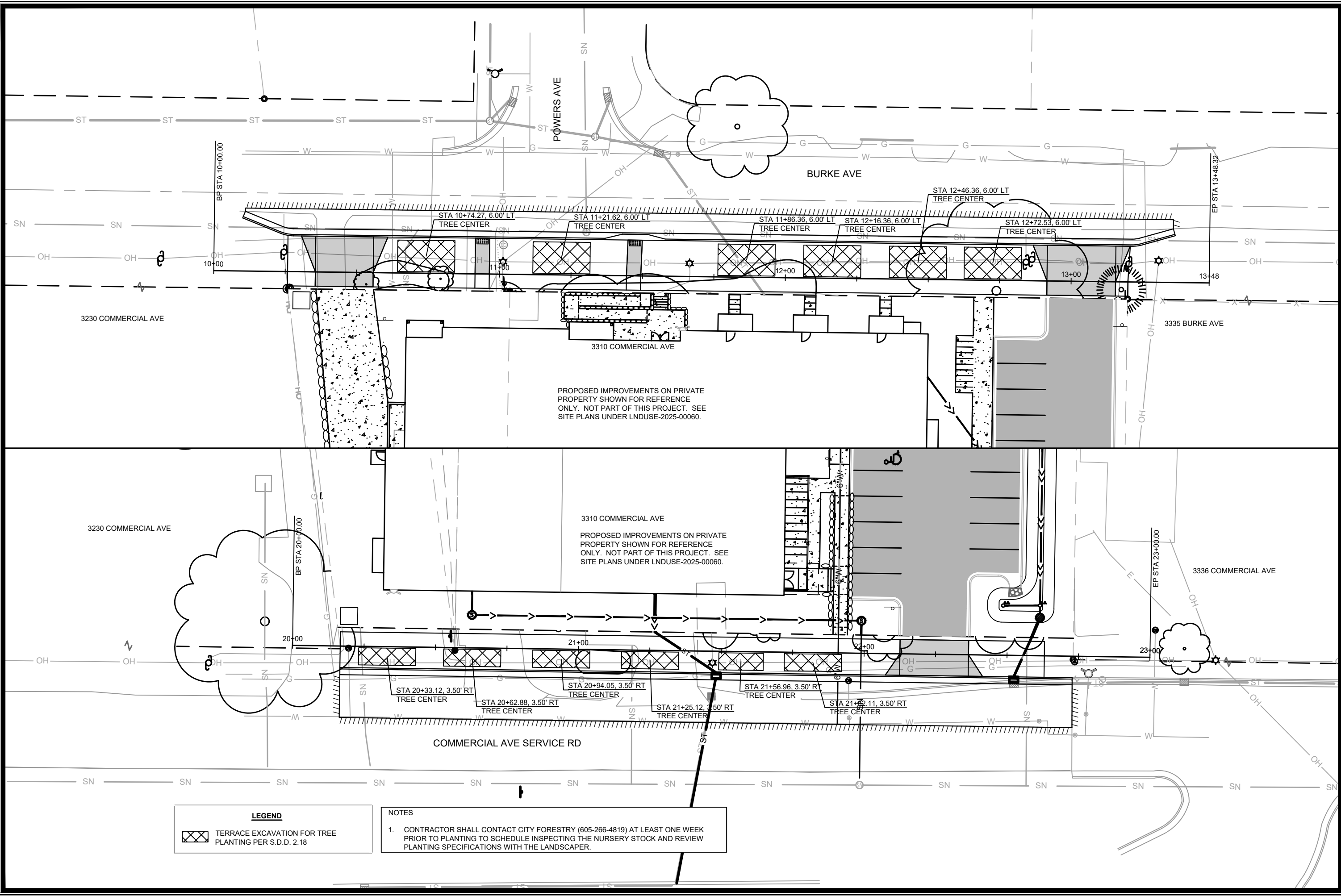
Designed By: SDM | Date: 6/20/2024 3:32 PM | Scale: 1:20  
 16074

PAVEMENT MARKING PLAN  
 3310 COMMERCIAL AVENUE  
 M:\DESIGN\Traffic\Maps\_Plans\SM-Plans\Sign-Mark Basemap.dwg



16074  
 PM-1

16074  
 MADISON, WI  
 CONTRACT NO: ----  
 PM-1



**LEGEND**

	TERRACE EXCAVATION FOR TREE PLANTING PER S.D.D. 2.18
--	--

**NOTES**

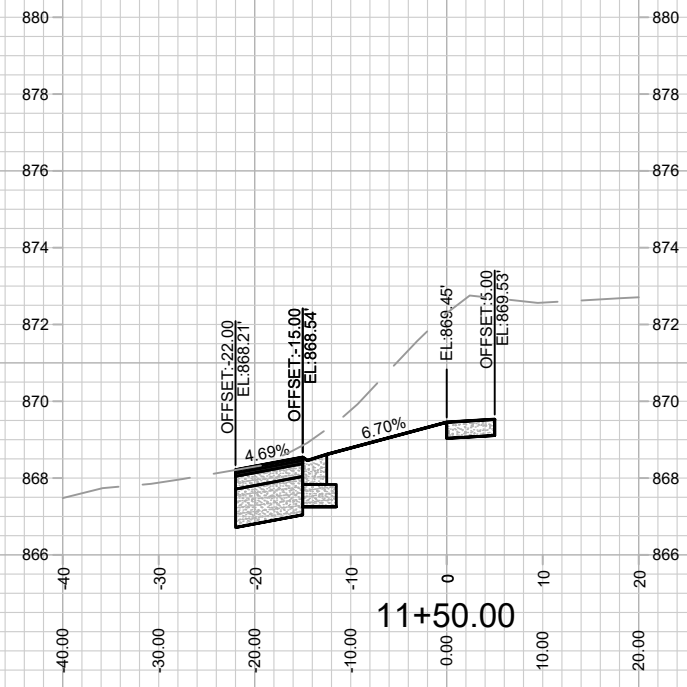
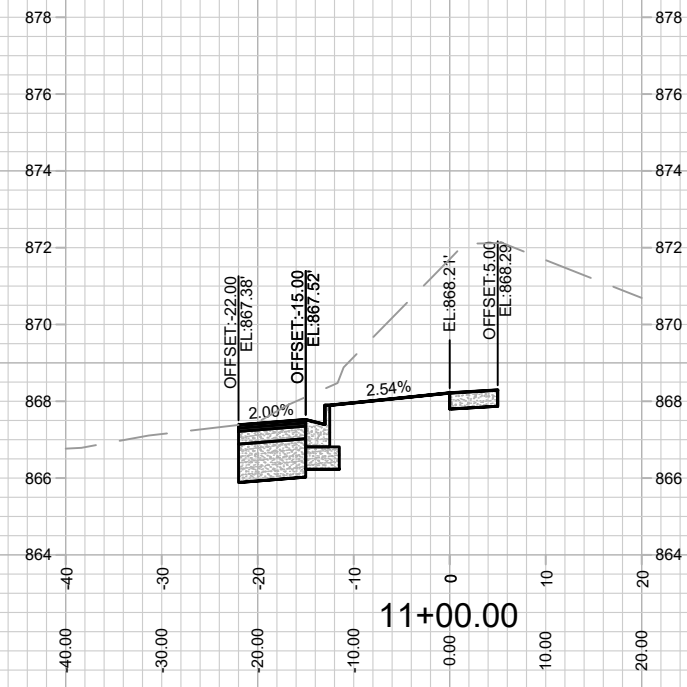
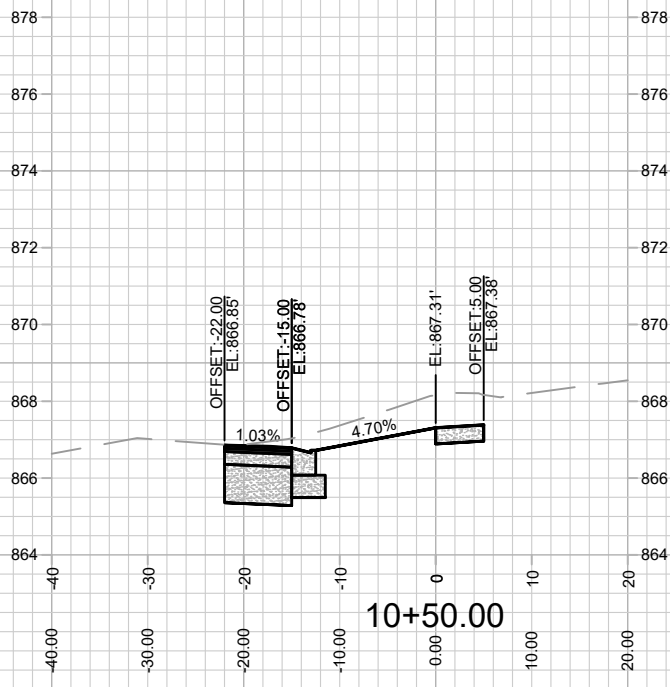
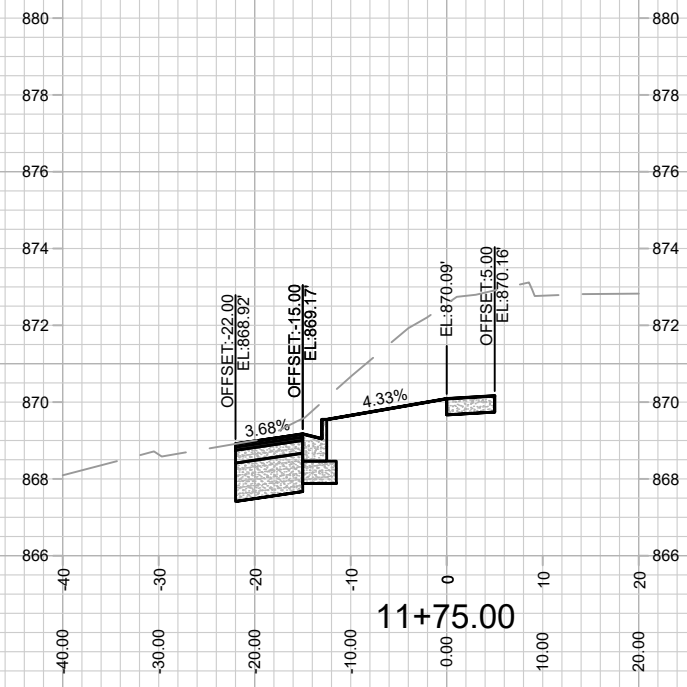
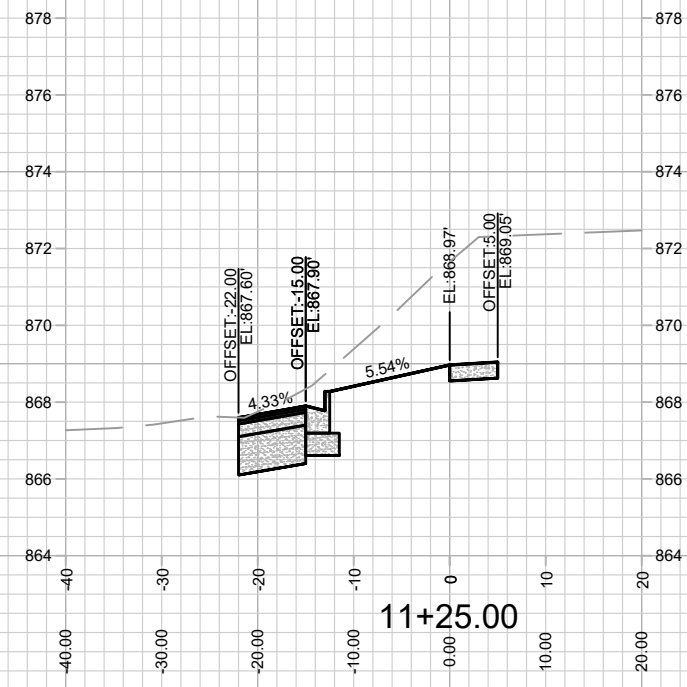
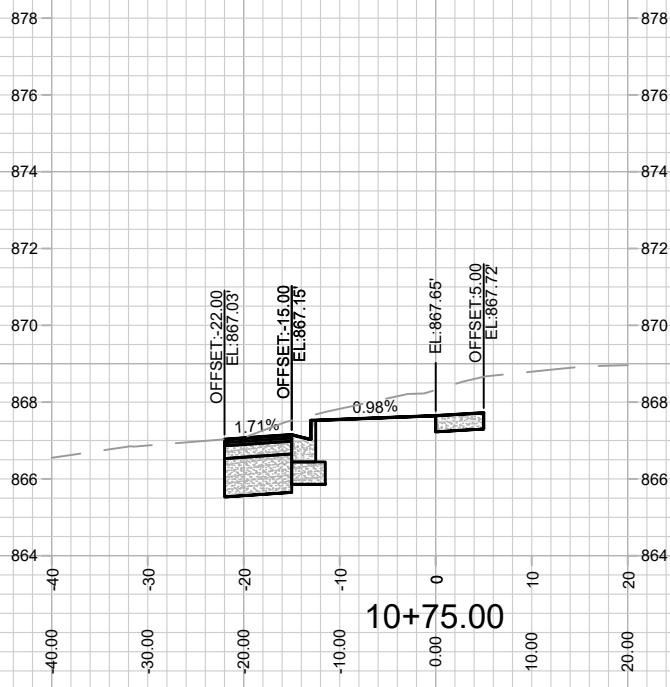
- CONTRACTOR SHALL CONTACT CITY FORESTRY (605-266-4819) AT LEAST ONE WEEK PRIOR TO PLANTING TO SCHEDULE INSPECTING THE NURSERY STOCK AND REVIEW PLANTING SPECIFICATIONS WITH THE LANDSCAPER.

DATE	BY
REVISION	
MARK	
Designed By: NJL	Date: 4/16/2026 9:06 AM
Scale: #####	
16074	L-1

16074  
MADISON, WI  
CONTRACT NO: 9719

LANDSCAPING PLAN  
3310 COMMERCIAL AVENUE  
M:\DESIGN\Projects\16074\CAD\Streets\16074EN-LandscapingPlan.dwg

16074  
L-1



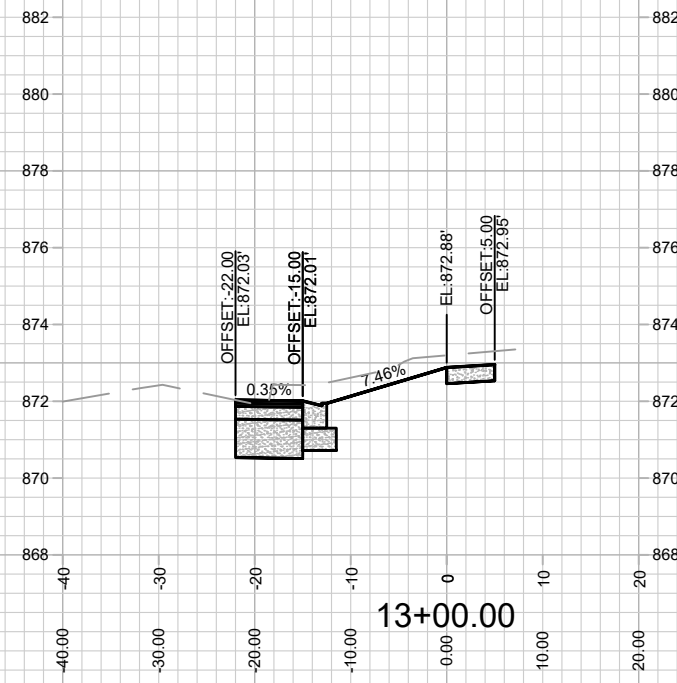
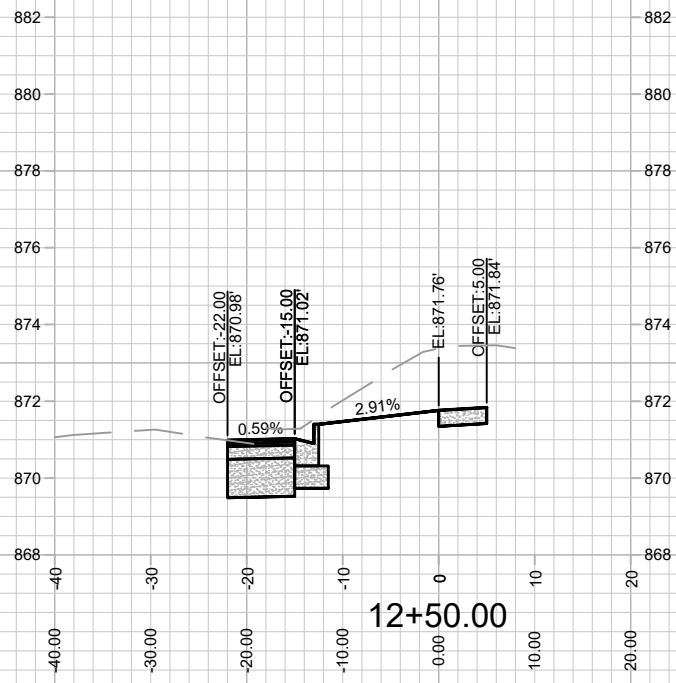
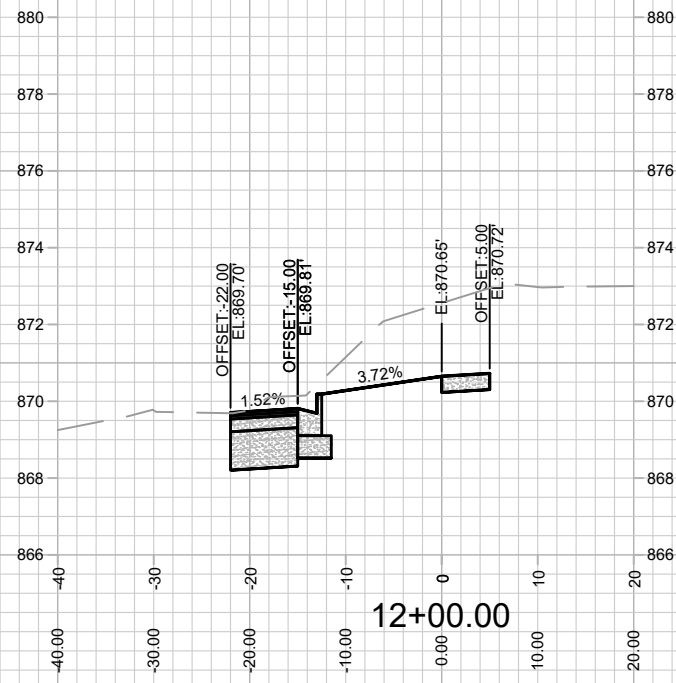
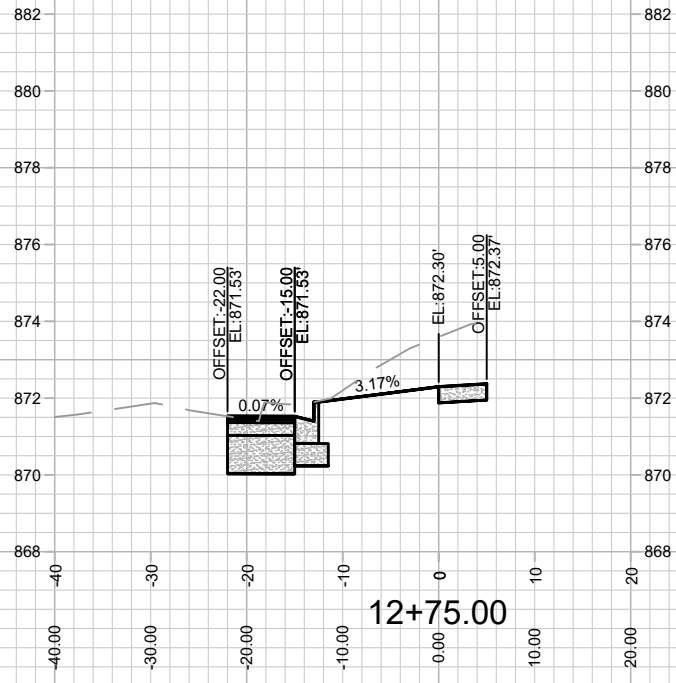
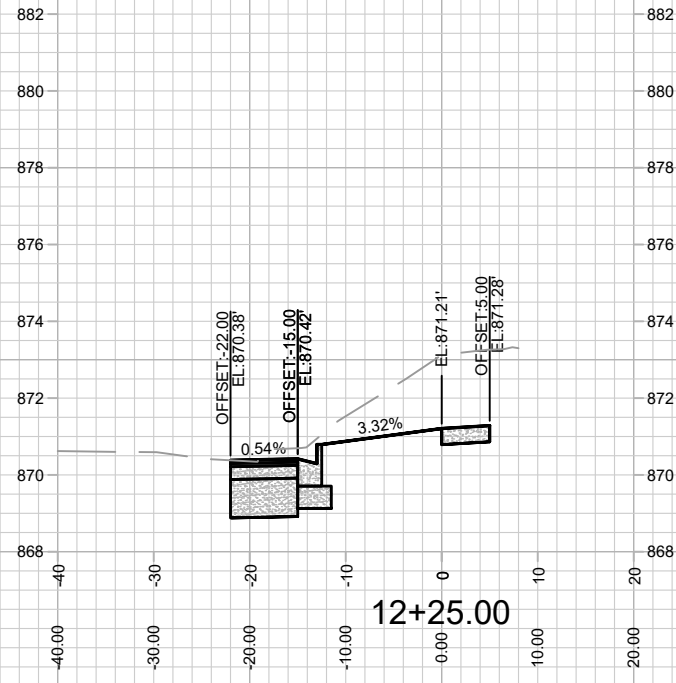
MARK	REVISION	DATE	BY

Designed By: NJJ  
Date: 4/16/2026 9:07 AM  
Scale: 1" = 20'

16074  
MADISON, WI  
9719  
CONTRACT NO:

CROSS SECTIONS - BURKE AVENUE  
3310 COMMERCIAL AVENUE  
M:\DESIGN\Projects\16074\CAD\Streets\16074EN-Xsections.dwg

16074  
X-1



MARK	REVISION	DATE	BY

Designed By: NJL  
Date: 4/16/2026 9:07 AM  
Scale: 1" = 20'

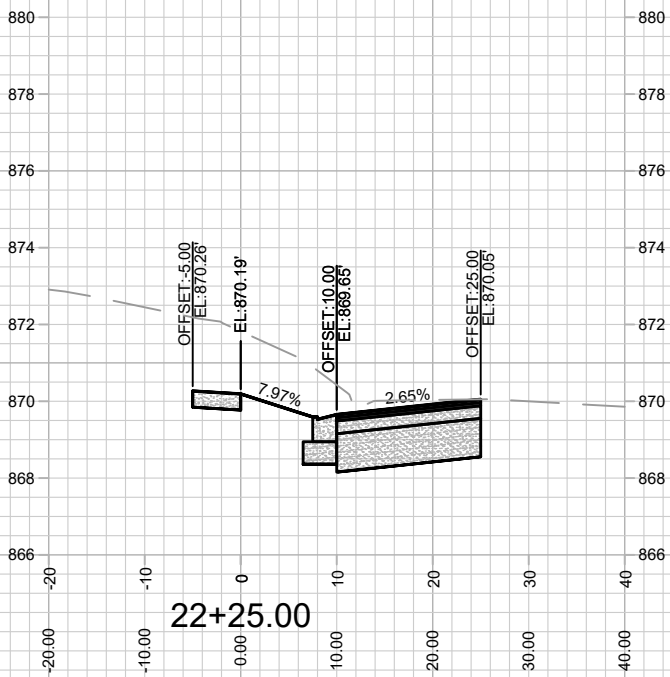
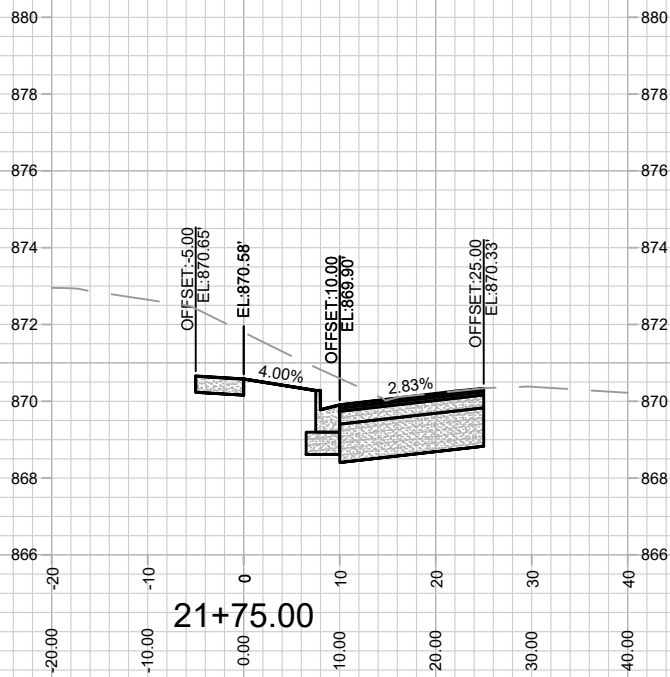
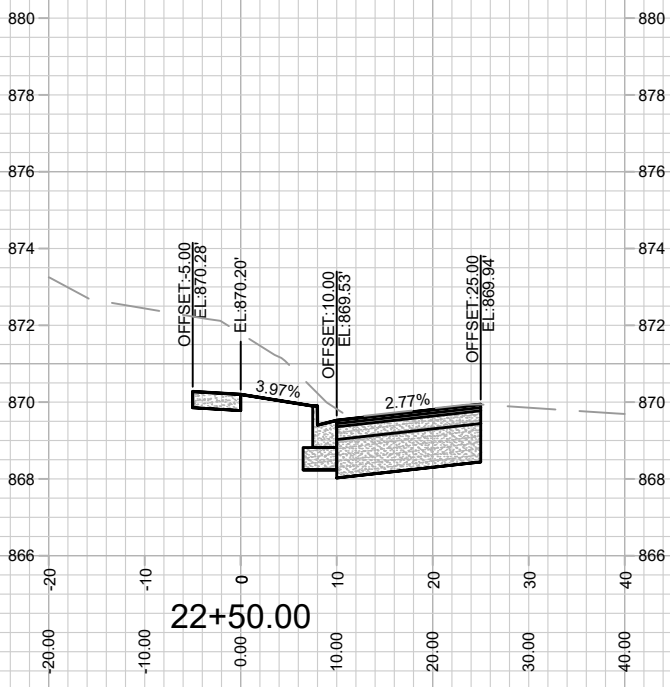
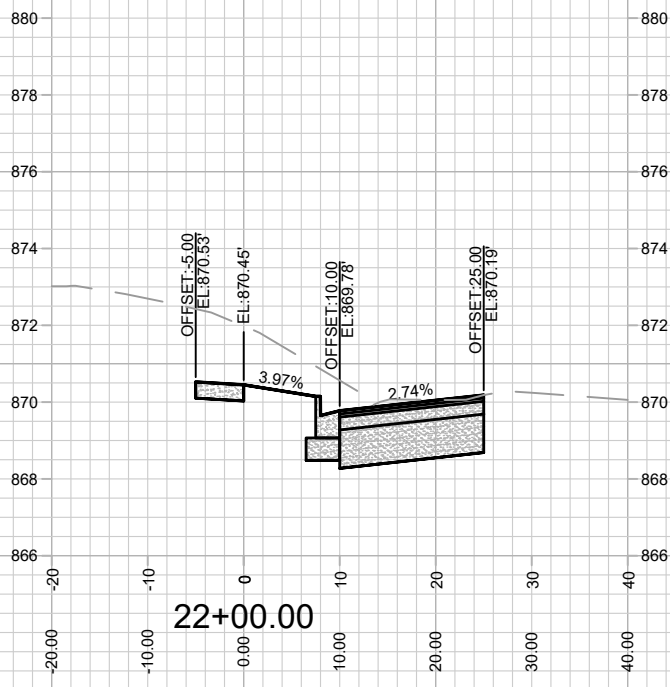
16074  
MADISON, WI  
9719  
CONTRACT NO:

CROSS SECTIONS - BURKE AVENUE  
3310 COMMERCIAL AVENUE  
M:\DESIGN\Projects\16074\CAD\Streets\16074EN-Xsections.dwg



16074  
X-2





MARK	REVISION	DATE	BY
16074	Designed By: NJL	Date: 4/16/2026 9:07 AM	Scale: 1" = 20'
16074			X-4

16074  
MADISON, WI  
9719  
CONTRACT NO:

CROSS SECTIONS - COMMERCIAL AVENUE  
3310 COMMERCIAL AVENUE  
M:\DESIGN\Projects\16074\CAD\Streets\16074EN-Xsections.dwg



16074  
X-4