



Department of Public Works
Engineering Division
Kathy Cryan, Interim Engineering Manager

City-County Building, Room 115
210 Martin Luther King, Jr. Boulevard
Madison, Wisconsin 53703
Phone: (608) 266-4751
Fax: (608) 264-9275
engineering@cityofmadison.com
www.cityofmadison.com/engineering

Deputy City Engineer
Gregory T. Fries, P.E.

Principal Architect 2
Bryan Cooper, AIA

Principal Engineer 2
John S. Fahrney, P.E.
Chris Petykowski, P.E.
Janet Schmidt, P.E.

Principal Engineer 1
Christina M. Bachmann, P.E.
Mark D. Moder, P.E.
James M. Wolfe, P.E.

Financial Manager
Steven B. Danner-Rivers

May 12, 2022

Dear City of Madison Resident:

The City of Madison Engineering Division will be making trenchless repairs to existing sanitary and/or storm facilities located near 1401 S Whitney Way. Please refer to the map on the back of this letter for the exact location of work to be performed.

This work is scheduled to take place within the next (3) to (30) days. Work will be performed Monday through Saturday between the hours of 7:30 AM and 3:30 PM.

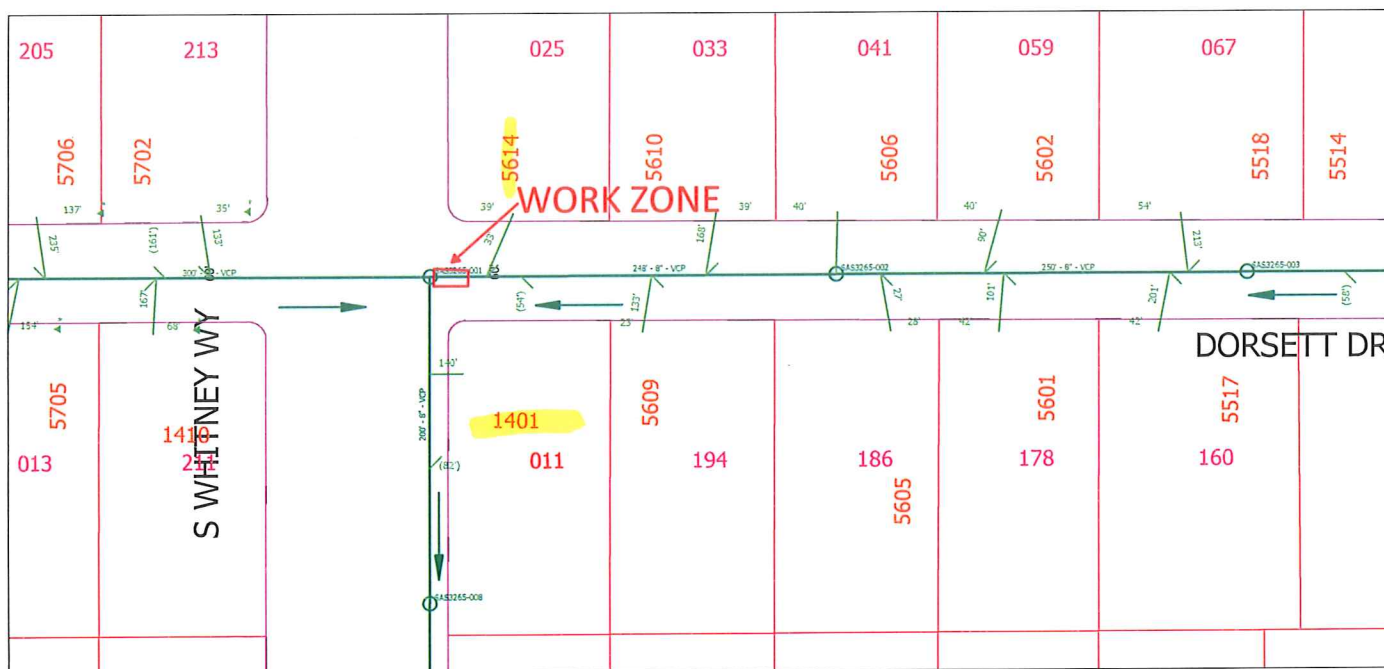
Note that this work will not interrupt your water or sewer service. Please contact Jay Schlimgen in the City of Madison Operations Section at (608) 266-4087 if you have any questions or need additional information.

Sincerely,

Robert F. Phillips
City Engineer

c: Ald. Yannette Figueroa
Kathy Cryan, Deputy Division Manager

TRENCHLESS SANITARY REPAIR
1401 S. WHITNEY WAY
WO#79156
TRAFFIC PLAN
PG. 19 WZSG19 HANDBOOK



Time: 5/11/2022 11:39:39 AM

Session: U:\GTVviewer_Sessions\jay.gts

City of Madison, WI - GIS/Mapping data

Printed By: enjgs

Disclaimer: The City makes no representation about the accuracy of these records and shall not be liable for any damages