



Department of Public Works

Engineering Division

James M. Wolfe, P.E., City Engineer

City-County Building, Room 115
210 Martin Luther King, Jr. Boulevard
Madison, Wisconsin 53703
Phone: (608) 266-4751
Fax: (608) 264-9275
engineering@cityofmadison.com
www.cityofmadison.com/engineering

Deputy City Engineer

Bryan Cooper, AIA
Gregory T. Fries, P.E.
Chris Petykowski, P.E.

Deputy Division Manager

Kathleen M. Cryan

Principal Engineer 2

John S. Fahrney, P.E.
Janet Schmidt, P.E.

Principal Engineer 1

Christina M. Bachmann, P.E.
Mark D. Moder, P.E.

Financial Manager

Steven B. Danner-Rivers

January 12, 2023

Dear City of Madison Resident:

The City of Madison Engineering Division will be making repairs to existing sanitary and/or storm facilities located near 2 Chippewa Ct. Please refer to the map on the back of this letter for the exact location of work to be performed.

This work is scheduled to take place within the next (3) to (30) days, depending on the weather and possible utility conflicts. Work will be performed Monday through Saturday between the hours of 7:30 AM and 3:30 PM.

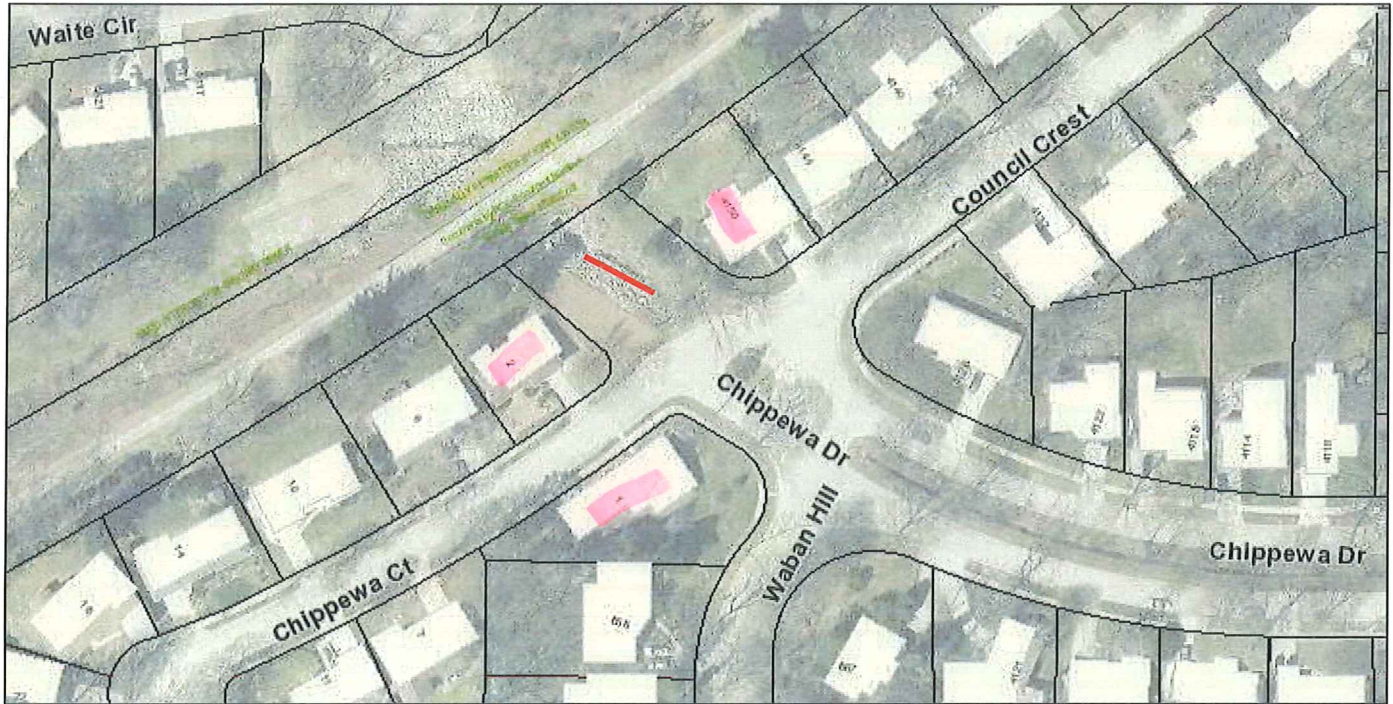
Note that this work will not interrupt your water or sewer service. Please contact Chris Scharf in the City of Madison Operations Section at (608) 267-1973 if you have any questions or need additional information.

Sincerely,

James Wolfe
City Engineer

c: Ald. Yannette Figueroa Cole

Council Crest

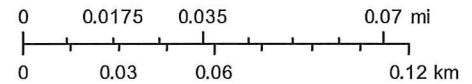


January 12, 2023

polylineLayer

- | | |
|---|--|
| — Override 1 | - - Sanitary Sewer Easement Text |
| Situs Addresses | - - Storm Sewer Easement Lines |
| Secondary Addresses | Storm Sewer Easement Text |
| Municipality | Roads |
| Municipal Limits Text | Buildings |
| - - Sanitary Sewer Easement Lines | Parcels as Mock ROW |

1:2,257



City of Madison Engineering

Council Crest Ditch Work
WO# 111374