



5714 Department of Public Works
Engineering Division
James M. Wolfe, P.E., City Engineer

City-County Building, Room 115
210 Martin Luther King, Jr. Boulevard
Madison, Wisconsin 53703
Phone: (608) 266-4751
Fax: (608) 264-9275
engineering@cityofmadison.com
www.cityofmadison.com/engineering

Deputy City Engineer
Bryan Cooper, AIA
Gregory T. Fries, P.E.
Chris Petykowski, P.E.
Deputy Division Manager
Kathleen M. Cryan
Principal Engineer 2
John S. Fahrney, P.E.
Janet Schmidt, P.E.
Principal Engineer 1
Christina M. Bachmann, P.E.
Mark D. Moder, P.E.
Financial Manager
Steven B. Danner-Rivers

April 4, 2023

Dear City of Madison Resident:

The City of Madison Engineering Division will be making repairs to existing sanitary and/or storm facilities located near 5714 Crabapple Ln. Please refer to the map on the back of this letter for the exact location of work to be performed.

This work is scheduled to take place within the next (3) to (30) days, depending on the weather and possible utility conflicts. Work will be performed Monday through Saturday between the hours of 7:30 AM and 3:30 PM.

Note that this work will not interrupt your water or sewer service. Please contact Ryan Schmidt in the City of Madison Operations Section at (608) 266-4086 if you have any questions or need additional information.

Sincerely,

James Wolfe
City Engineer

c: Ald. Yannette Figueroa Cole

Sanitary Casting Replacement
5714 Crabapple Ln.
6' x 6' Excavation of Asphalt
WO# 121188

Traffic Control Plan
Pg# 19 WZSG19 Handbook



Time: 3/30/2023 1:12:21 PM

Session: M:\GTViewer\GTViewer_UserData_GTViewer.gtm

City of Madison, WI - GIS/Mapping data

Printed By: enjct

Disclaimer: The City makes no representation about the accuracy of these records and shall not be liable for any damages

(2) Sanitary Casting Replacements
5818 Crabapple Ln.
6' x 6' Excavation of Asphalt X(2)
WO# 121188

Traffic Control Plan
Pg# 19WZSG19 Handbook



Time: 3/30/2023 1:04:51 PM

Session: M:\GTViewer\GTViewer_UserData\GTViewer.gtm

City of Madison, WI - GIS/Mapping data

Printed By: enjct

Disclaimer: The City makes no representation about the accuracy of these records and shall not be liable for any damages

Traffic Control Plan
Pg# 43 WZSG19 Handbook



Session: M:\GTViewer\GTViewer_UserData_GTViewer.gtm

Printed By: enjct

Disclaimer: The City makes no representation about the accuracy of these records and shall not be liable for any damages

Traffic Control Plan
Pg# 43WZSG19 Handbook



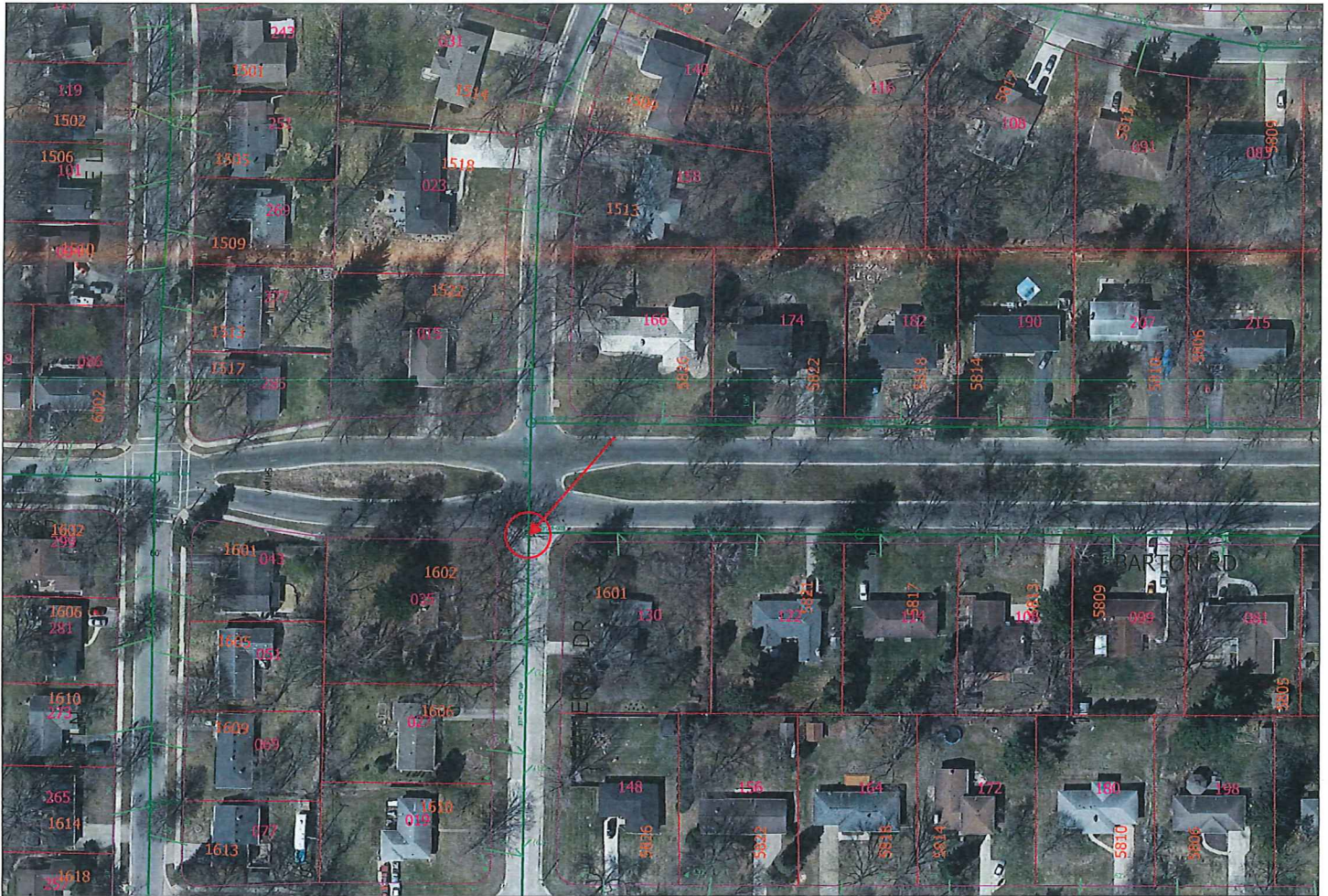
Session: M:\GTViewer\GTViewer_UserData_GTViewer.gtm

City of Madison, WI - GIS/Mapping data

Disclaimer: The City makes no representation about the accuracy of these records and shall not be liable for any damages

Sanitary Casting Replacement
1601 Cameron Dr.
6' x 6' Excavation of Asphalt
WO# 121188

Traffic Control Plan
Pg# 43 WZSG19 Handbook



Time: 3/30/2023 1:28:58 PM

Session: M:\GTViewer\GTViewer_UserData_GTViewer.gtm

City of Madison, WI - GIS/Mapping data

Printed By: enjct

Disclaimer: The City makes no representation about the accuracy of these records and shall not be liable for any damages

