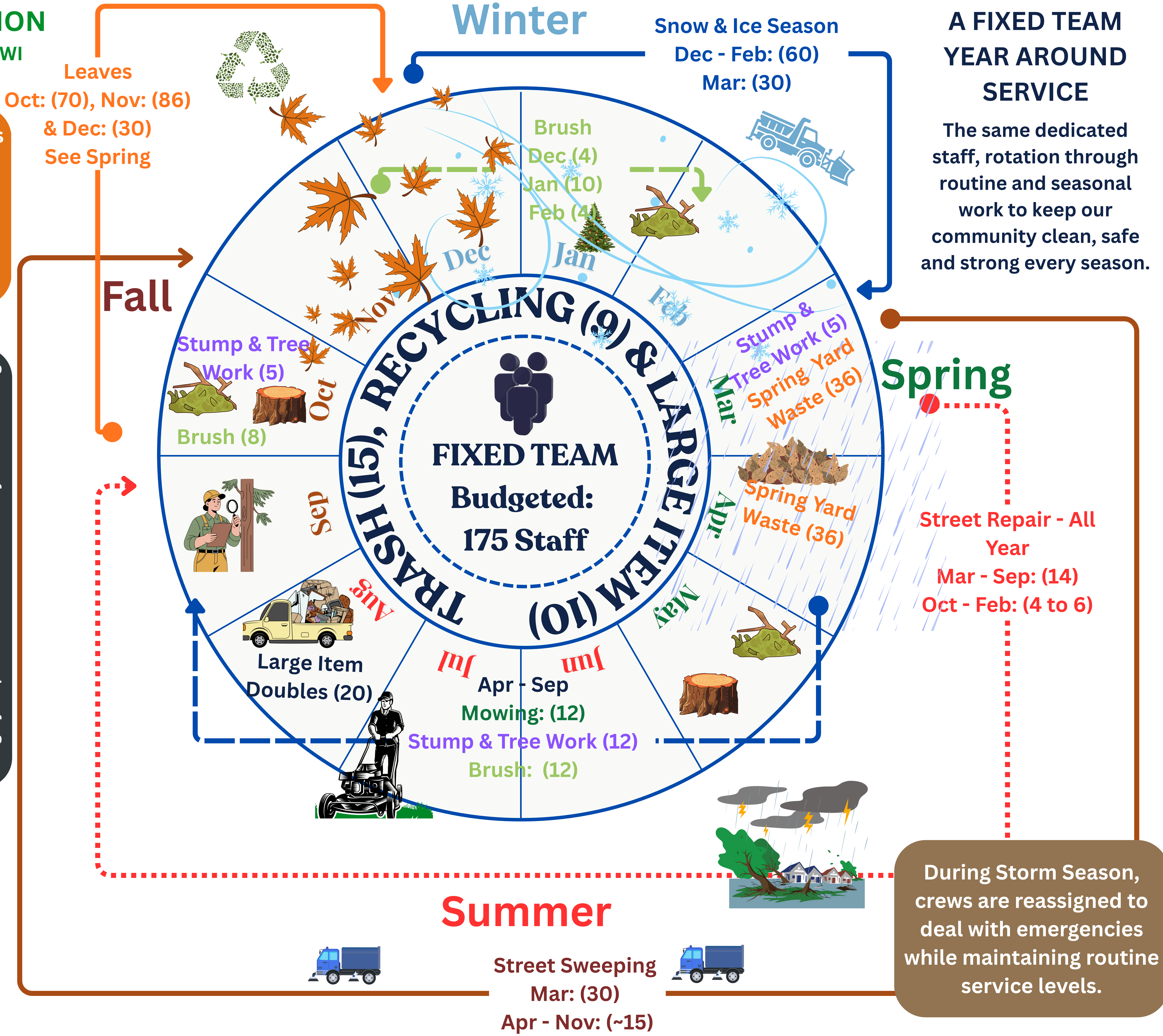


STREETS DIVISION
CITY OF MADISON, WI

As season changes so do Streets priorities. Staff rotates to where they are needed most.

ONE TEAM. MANY TASKS. ONE GOAL
By rotating staff based on need, Streets deliver the right services, at the right time, with the same dedicated team Madison counts on.

Numbers in () represent staff per Month for each task during a year period. These numbers vary as needs change.



During Storm Season, crews are reassigned to deal with emergencies while maintaining routine service levels.

Over 30 Staff members per month are also assigned to other tasks such as Transfer Station, Drop-off Sites, Urban Forestry Operations, Right-of-Way Duties, Parks Division Work Share, Graffiti Cleaning & Cart Maintenance.