



Department of Public Works  
**Engineering Division**  
Kathy Cryan, Interim Engineering Manager

City-County Building, Room 115  
210 Martin Luther King, Jr. Boulevard  
Madison, Wisconsin 53703  
Phone: (608) 266-4751  
Fax: (608) 264-9275  
[engineering@cityofmadison.com](mailto:engineering@cityofmadison.com)  
[www.cityofmadison.com/engineering](http://www.cityofmadison.com/engineering)

**Deputy City Engineer**  
Gregory T. Fries, P.E.

**Principal Architect 2**  
Bryan Cooper, AIA

**Principal Engineer 2**  
John S. Fahrney, P.E.  
Chris Petykowski, P.E.  
Janet Schmidt, P.E.

**Principal Engineer 1**  
Christina M. Bachmann, P.E.  
Mark D. Moder, P.E.  
James M. Wolfe, P.E.

**Financial Manager**  
Steven B. Danner-Rivers

September 15, 2022

Dear City of Madison Resident:

The City of Madison Administrative Procedure 6-2 requires that notice be provided to property owners within 100 feet of tree trimming, pruning or removal which will occur on public lands.

The City owns the Lake Wingra-South Arboretum Greenway, Post Road Section adjacent to your property. We intend to trim some lower branches of pine trees encroaching on private property as well as underbrush/vegetation along the property lines of the greenway. The map on the back of this letter shows an approximate location of the trees, representing a general estimate of where the trees are and may not be completely accurate. All work will take place on city owned property.

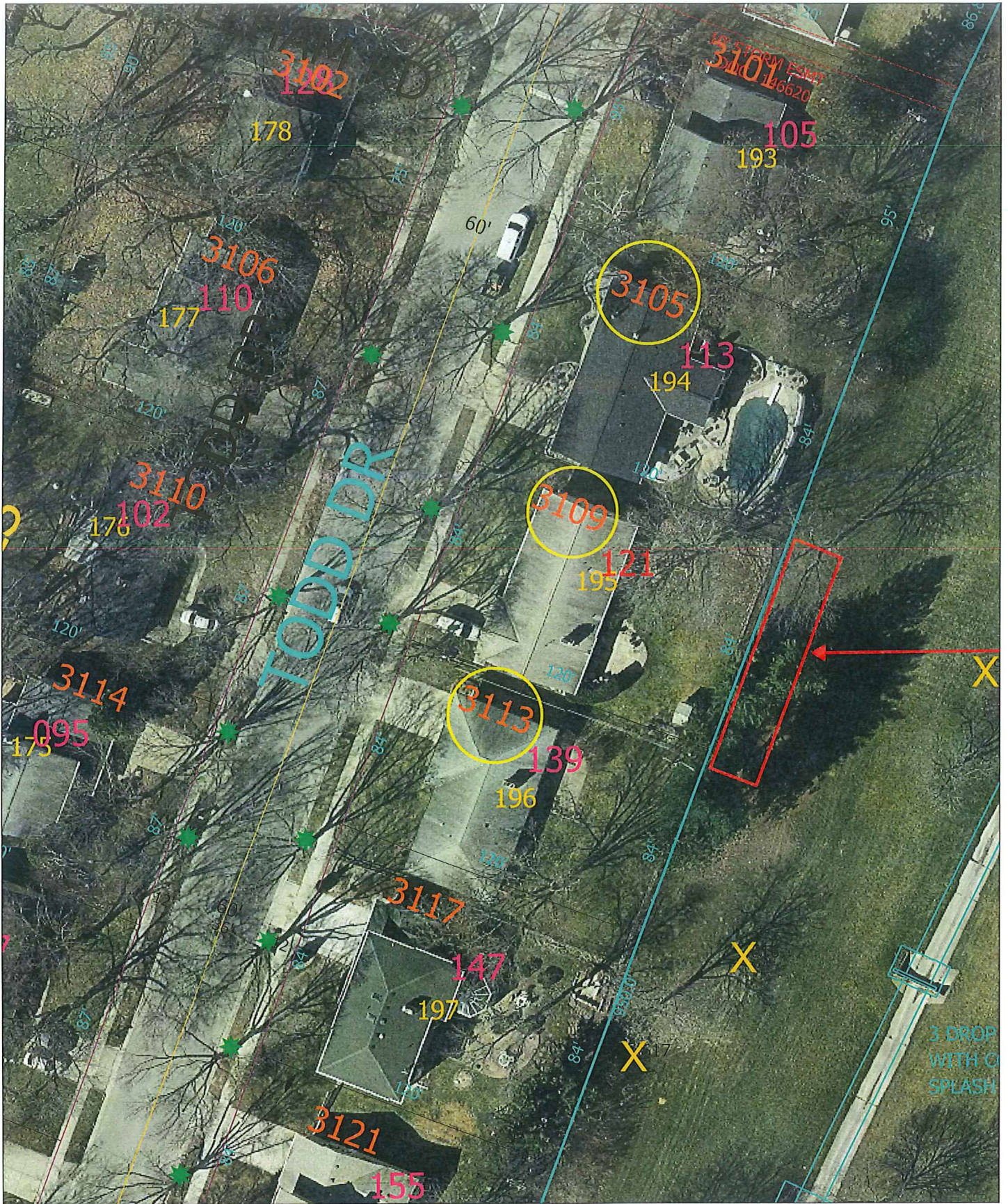
This work is scheduled to take place within the next (10) to (90) days, depending on the weather and possible utility conflicts. Work will be performed Monday through Saturday between the hours of 7:30 AM and 3:30 PM.

Please contact Ryan Schmidt in the City of Madison Operations Section at (608) 266-4086 if you have any questions or need additional information.

Sincerely,

Kathy Cryan  
Interim Engineering Manager

c: Ald. Yannette Figueroa Cole



Time: 9/15/2022 12:41:07 PM

Session: M:\GTViewer\GTViewer\_UserData\Dean.gts

City of Madison, WI - GIS/Mapping data

Printed By: enrms

Disclaimer: The City makes no representation about the accuracy of these records and shall not be liable for any damages