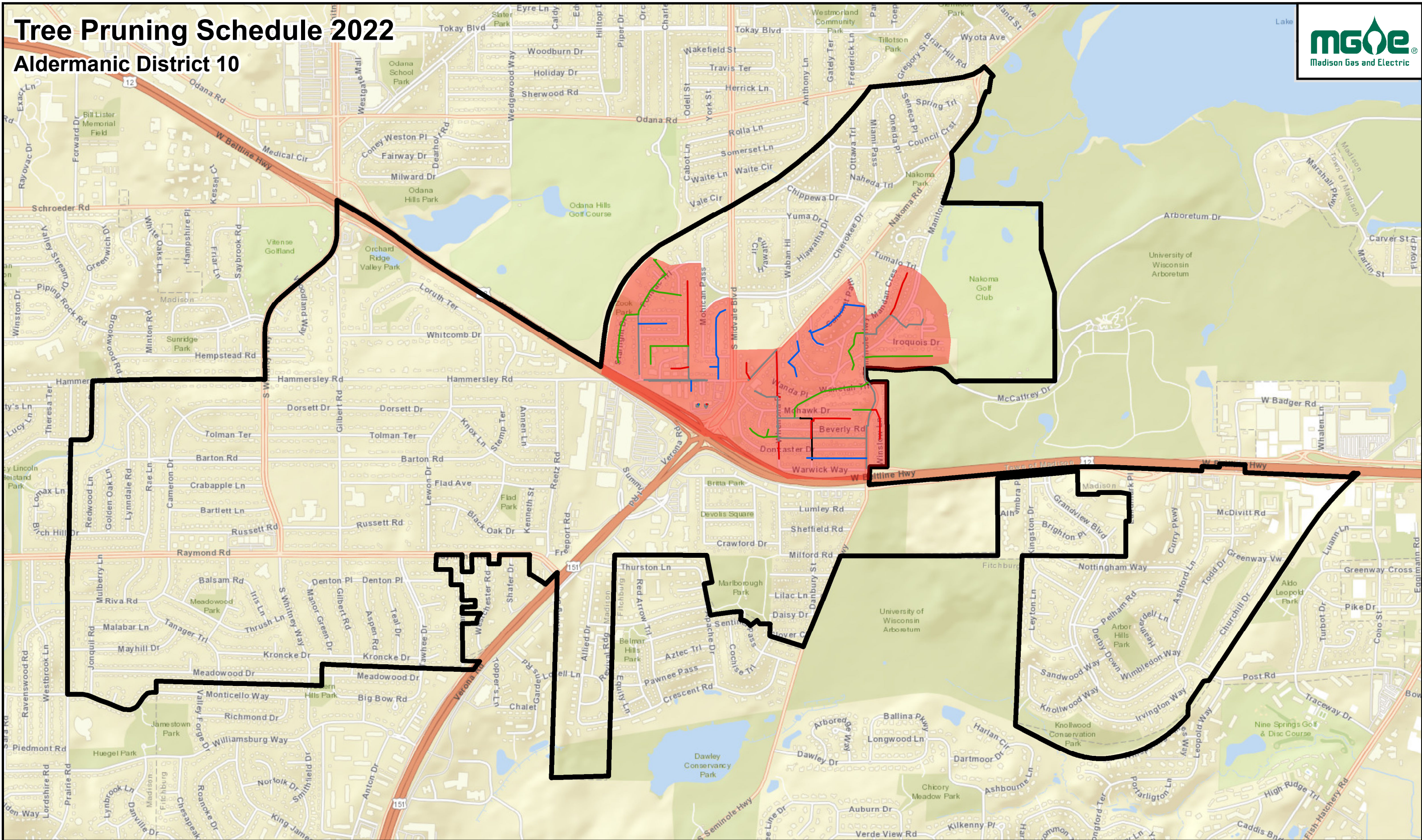


# Tree Pruning Schedule 2022

## Aldermanic District 10



### GIS Data / Mapping Disclaimer

Madison Gas and Electric Company ("MGE") is providing you access to its GIS mapping data ("Information"), in electronic format or print format, as a resource of general information for use "as-is." The Information provided is for reference purposes only and is and shall remain the property of MGE. This Information may not be copied, distributed, rented, or altered for subsequent use, in whole or in part, without the express written consent of MGE. The Information provided may contain inaccuracies or errors. Source data used for the Information may have been collected at different scales, times or definitions, resulting in inconsistencies among features represented together as part of this Information. MGE makes no representation regarding the accuracy, reliability, or completeness of the information. The use of this Information is at your own risk.

By accessing this Information, you agree and acknowledge that receipt of the Information in no way releases you from following required and standard protocols in the course of normal business including but not limited to calling and relying upon Digger's Hotline.

By using the Information you hereby release MGE, its officers, directors, employees and agents from any responsibility or liability associated with its use. In no event will MGE be liable for any damages whatsoever that may arise out of the use of the Information.

For questions, contact Chris Link (clink@mge.com or 608-252-5627) or Gregg Gohrband (ggohrband@mge.com or 608-252-4769)

# Tree Pruning Notice

Your safety and electric service reliability are important to us. MGE will be pruning trees near our power lines in your neighborhood in 2022/2023; this is done to minimize tree-related storm damage and tree-caused electric system outages.

As a National Arbor Day “Tree Line USA Utility,” we are concerned about the health and appearance of trees in your neighborhood. Our contract crews prune according to industry Best Management Practices as outlined by the International Society of Arboriculture. The crews also undergo yearly work- and safety-related training.

MGE works with the City Forester and the City of Madison Streets Division to plan tree pruning on the public rights-of-way of streets, alleys, and greenways. MGE’s 2022 plan for pruning trees on the public rights-of-ways will be considered by the Habitat Stewardship Subcommittee on Tuesday, May 17, 2022, at 4:30 P.M., via virtual meeting.

If you wish to speak at the virtual meeting, you must register. You can register at [www.cityofmadison.com/city-hall/committees/meeting-schedule](http://www.cityofmadison.com/city-hall/committees/meeting-schedule). Registration will open once the meeting is published on the Calendar, typically around noon on the Friday preceding the meeting, which in this instance is Friday, May 13, 2022. Interested participants need to search for the date, click on the Habitat Stewardship Subcommittee meeting, then click “Register for Public Comment.”

If you require an interpreter, materials in alternate formats, or other accommodations to access this public hearing, please contact City of Madison Parks Department at phone (608) 266-4816 or email us at [habitatstewardshipsubcommittee@cityofmadison.com](mailto:habitatstewardshipsubcommittee@cityofmadison.com). Please make contact at least 72 hours prior to the date of this public hearing so that we can make proper accommodations.

**You will receive another notice prior to actual pruning.**



**Madison Gas and Electric Company**  
P.O. Box 1231  
Madison, Wisconsin 53701-1231

PRESORTED  
FIRST CLASS

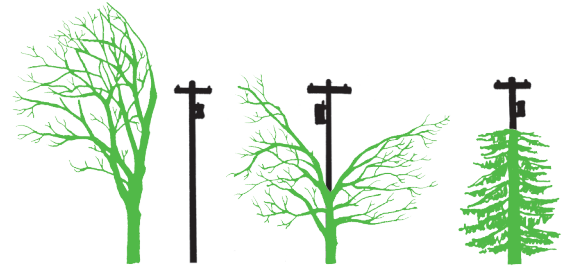
# Tree pruning in your neighborhood

Madison Gas and Electric (MGE) will be performing line clearance tree pruning in your neighborhood in the next few months. This postcard is the first of a two-part notification process before we begin our pruning work. Along with this postcard, you can expect to see an MGE Consulting Utility Arborist (CUA) in your neighborhood soon.

Our International Society of Arboriculture-certified CUAs will conduct a full inspection and assessment of all MGE's overhead electric facilities for vegetation conflicts in your neighborhood. You will be notified about any proposed pruning on your property prior to the work starting. MGE's goal is to prune for five years of clearance and remove tall-growing species under our primary wires.

As a recognized Tree Line USA utility for more than 20 years, MGE trains our tree service contractors to follow industry-accepted best management practices and internationally accepted tree-pruning methods. MGE's line clearance pruning is necessary for your safety, to help prevent storm damage, and to minimize electrical outages related to tree/wire conflicts. We thank you for your cooperation in our efforts.

If you have questions or special circumstances we should be aware of, such as a dog in the yard, a locked gate, or a tree you would like removed, please call MGE's Forestry Line at 608-252-7186 or 1-800-245-1125.



*The amount of pruning is based on the type of tree and how close the tree is to the wires. These are examples of pruning according to international pruning standards.*



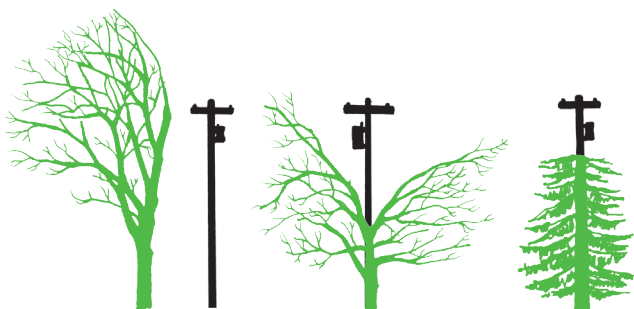


**Madison Gas and Electric Company**  
P.O. Box 1231  
Madison, Wisconsin 53701-1231

PRESORTED  
FIRST CLASS

## Tree pruning

The amount of pruning is based on the type of tree and how close the tree is to the wires. These are examples of pruning according to international pruning standards.



## Planting near power lines?

Use our online selection guide to pick the best tree or shrub for your yard. Visit [mge.com/trees](http://mge.com/trees). We also have a printed guide called *Power Planting*. Just call 252-7222 to get a copy, or download it at [mge.com/brochures](http://mge.com/brochures).

### Small trees

(less than 25 feet tall)

Flowering Crabapple,  
Hawthorne, Lilac,  
Shrubs

### Tall trees

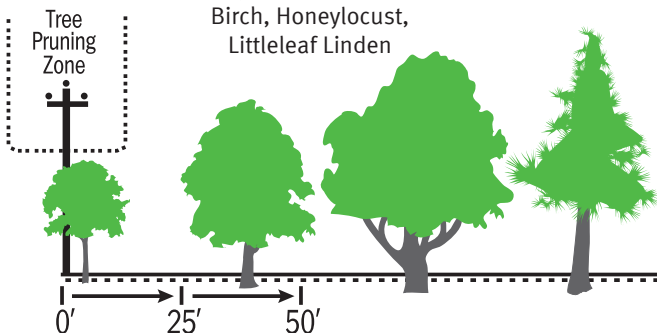
(more than 40 feet tall)

Ash, Maple, Oak

### Medium trees

(up to 40 feet tall)

Birch, Honeylocust,  
Littleleaf Linden





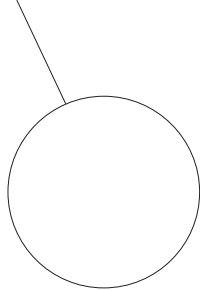
Madison Gas and Electric (MGE) will be pruning trees in your neighborhood. We prune trees near power lines for your safety, to prevent storm damage and to minimize electrical outages.

As a recognized Tree Line USA utility, MGE trains our tree service contractors to prune trees according to international pruning standards. They will prune to attain approximately four years of safe clearance.

You will be notified with more specific information prior to our crew starting work on your property. If a tree needs extensive pruning, you may talk to our crew about other options such as removing the tree.

If you have any questions or special circumstances we should be aware of, such as a dog in the yard or a tree you would like removed, please contact MGE's Forestry Line at 252-7186 or 1-800-245-1125.





Map Number

### TREE PRUNING NOTICE

Date \_\_\_\_\_ Location of Work \_\_\_\_\_

Madison Gas and Electric Company (MGE) contracts with a professional line-clearing contractor to perform necessary tree pruning and/or brush removal. There is no charge to you to perform this work. Crews will prune for approximately five years' growth. All brush will be chipped and removed. Learn more about MGE's tree pruning process by visiting [mge.com/pruning](http://mge.com/pruning).

#### Work to be Done

#### Pruning

Qty.	Species	Notes

#### Brush Removal

Y/N	Description

#### Work Access

We may need to drive equipment onto your property.  
This will only be done if site conditions allow.

Site	Y/N	Notes
Yard		
Driveway		

Please call forestry representative if herbicide use is desired.

Forestry Representative \_\_\_\_\_ Date \_\_\_\_\_  
Phone \_\_\_\_\_



---

MGE is committed to providing safe and reliable energy to our customers. Inadequate line clearance can create safety hazards and cause service interruptions to you, your neighbors and your community. As a recognized Tree Line USA utility, MGE thoroughly trains our tree service contractors to prune trees following international pruning standards. Our contractors are active members of the International Society of Arboriculture, the Wisconsin Arborist Association and the National Arbor Day Foundation. We admire beautiful trees and will make every effort to be fair with both you as our customer and the tree.

---

