



Department of Public Works
Engineering Division
James M. Wolfe, P.E., City Engineer

City-County Building, Room 115
210 Martin Luther King, Jr. Boulevard
Madison, Wisconsin 53703
Phone: (608) 266-4751
Fax: (608) 264-9275
engineering@cityofmadison.com
www.cityofmadison.com/engineering

Assistant City Engineer
Bryan Cooper, AIA
Gregory T. Fries, P.E.
Chris Petykowski, P.E.

Deputy Division Manager
Kathleen M. Cryan

Principal Engineer 2
John S. Fahrney, P.E.
Janet Schmidt, P.E.

Principal Engineer 1
Mark D. Moder, P.E.
Andrew J. Zwieg, P.E.

Financial Manager
Steven B. Danner-Rivers

March 14, 2024

Dear City of Madison Resident:

The City of Madison Engineering Division will be making repairs to existing sanitary and/or storm facilities located near 4033 Lori Cir. Please refer to the map on the back of this letter for the exact location of work to be performed.

This work is scheduled to take place within the next (3) to (30) days, depending on the weather and possible utility conflicts. Work will be performed Monday through Saturday between the hours of 7:30 AM and 3:30 PM.

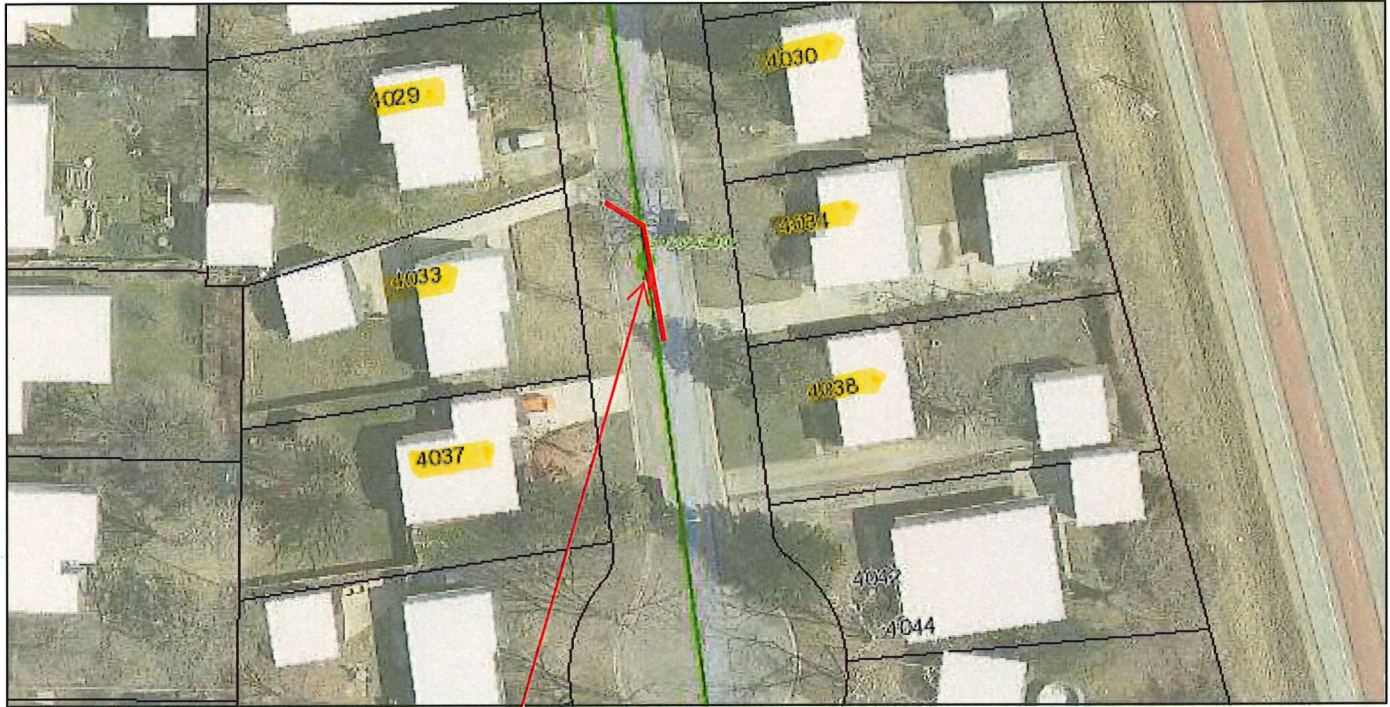
Note that this work will not interrupt your water or sewer service. Please contact Chris Scharf in the City of Madison Operations Section at (608) 267-1973 if you have any questions or need additional information.

Sincerely,

James Wolfe
City Engineer

c: Ald. Dina Nina Martinez-Rutherford

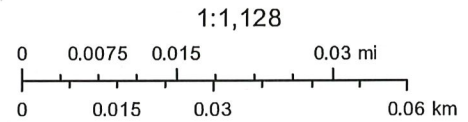
Lori Cir Rpr



March 14, 2024

- | | |
|---|---|
| polylineLayer | Inlet |
| Override 1 | Lift Station |
| Pipe Breaks | Abandoned Sewer |
| Storm Pipe | Storm Pipe |
| Storm Structures | Private Storm Pipe |
| Other | Lateral Property Dimension |

- | |
|---|
| Lateral Main Dimension |
| Sanitary Pump Station |
| Riser |



City of Madison Engineering
 Sources: Esri, HERE, Garmin, USGS, Intermap, INCREMENT P, NRCan, Esri Japan, METI, Esri China (Hong Kong), Esri Korea, Esri (Thailand), NGCC, (c) OpenStreetMap contributors, and the GIS User Community

Sanitary Main Repair
 4033 Lori Cir
 5' x 10' Excavation/Asphalt
 WO# 152536

Traffic Control Plan
 pg 25 WZS handbook

ENGROW-2024-00330