

**5602-5605 Schroeder Road Proposal**  
**NEIGHBORHOOD MEETING**

*- Meeting to Start at 6:30 pm -*

**TONIGHT'S AGENDA:**

- **Welcome**
- **Brief "Zoom" Tutorial**
- **Short Staff Discussion on Adopted Plans and Process**
- **Development Team Overview**
- **Questions, Answers, and Discussion**

# Meeting Basics

- **This meeting is being recorded. It is a public record subject to disclosure. By continuing to be in the meeting, you are consenting to being recorded and consenting to this record being released to public record requestors who may see you, your home, and your family members in the recording. You have the option to turn off your camera and participate with audio only.**

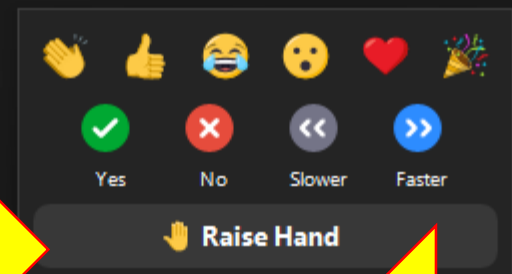
# Meeting Basics

- **This meeting is for participants to learn about the development, ask questions, and provide feedback.**
- **We'll open it up for discussion and questions after the developer's presentation.**
- **Please, one speaker at time.**

# **“Zoom” Basics**

- **Please keep microphone “muted” when not speaking to avoid background noise**
- **Turning your camera/video off may help keep the screen from “freezing”**
- **Use the “Raise Hand” function if you’d like to speak**

# Colin Punt



A menu for Zoom reactions. It contains several rows of icons: a clapping hands emoji, a thumbs up emoji, a laughing face emoji, a shocked face emoji, a heart emoji, and a party popper emoji. Below these are four buttons: a green checkmark labeled 'Yes', a red X labeled 'No', a grey double left arrow labeled 'Slower', and a blue double right arrow labeled 'Faster'. At the bottom is a button with a hand icon and the text 'Raise Hand'.



# “Zoom” Basics

If you are joining the meeting by phone:

\*6 - Toggle mute/unmute

\*9 - Raise hand

**To Email Questions During the Meeting:**

**[cpunt@cityofmadison.com](mailto:cpunt@cityofmadison.com)**

**Colin Punt, City of Madison Planning Division**



SCHROEDER CT

SCHROEDER RD

RAMP

W BELTLINE HWY/USH 12-14 (WB)

W BELTLINE HWY/USH 12-14 (EB)

S WHITNEY WAY



# Development Process Summary

**Pre-Application  
Discussions**

```
graph TD; A((Pre-Application Discussions)) --> B[Developer Files Applications]; B --> C[City Agency Review]; C --> D[PC & CC Public Hearings];
```

**Developer Files  
Applications**

**City Agency  
Review**

**PC & CC  
Public Hearings**

# City Review

**Conditional Uses: 28.183 MGO**

**Demolition Permits: 28.185 MGO**

**Planning**

**Zoning**

**City Engineering**

**Traffic Engineering**

**Parks**

**Forestry**

**Mapping**

**Fire**

**Water Utility**

**Metro Transit**

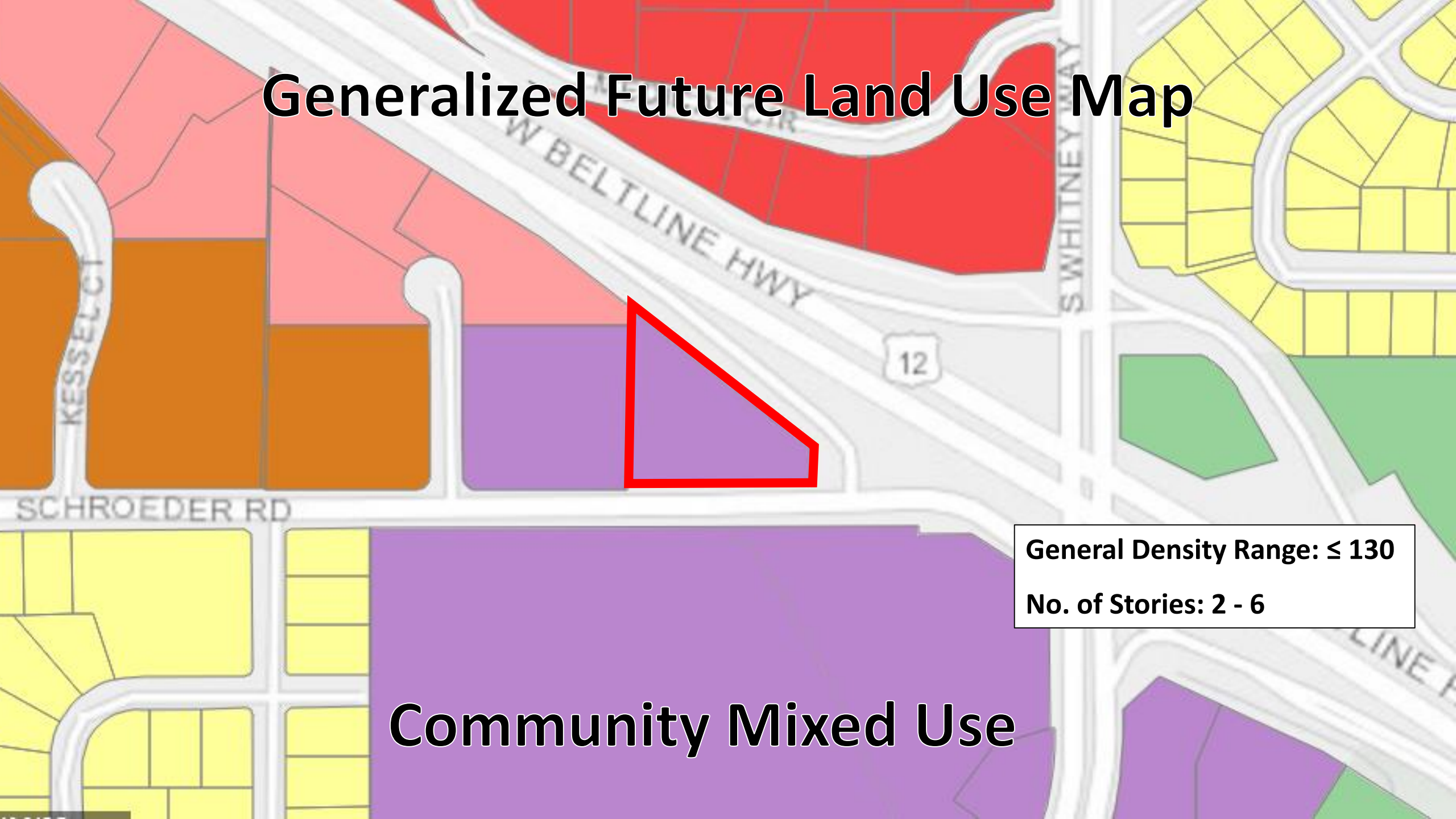
**Streets & Recycling**

**Assessor**

**Real Estate**

**Police**

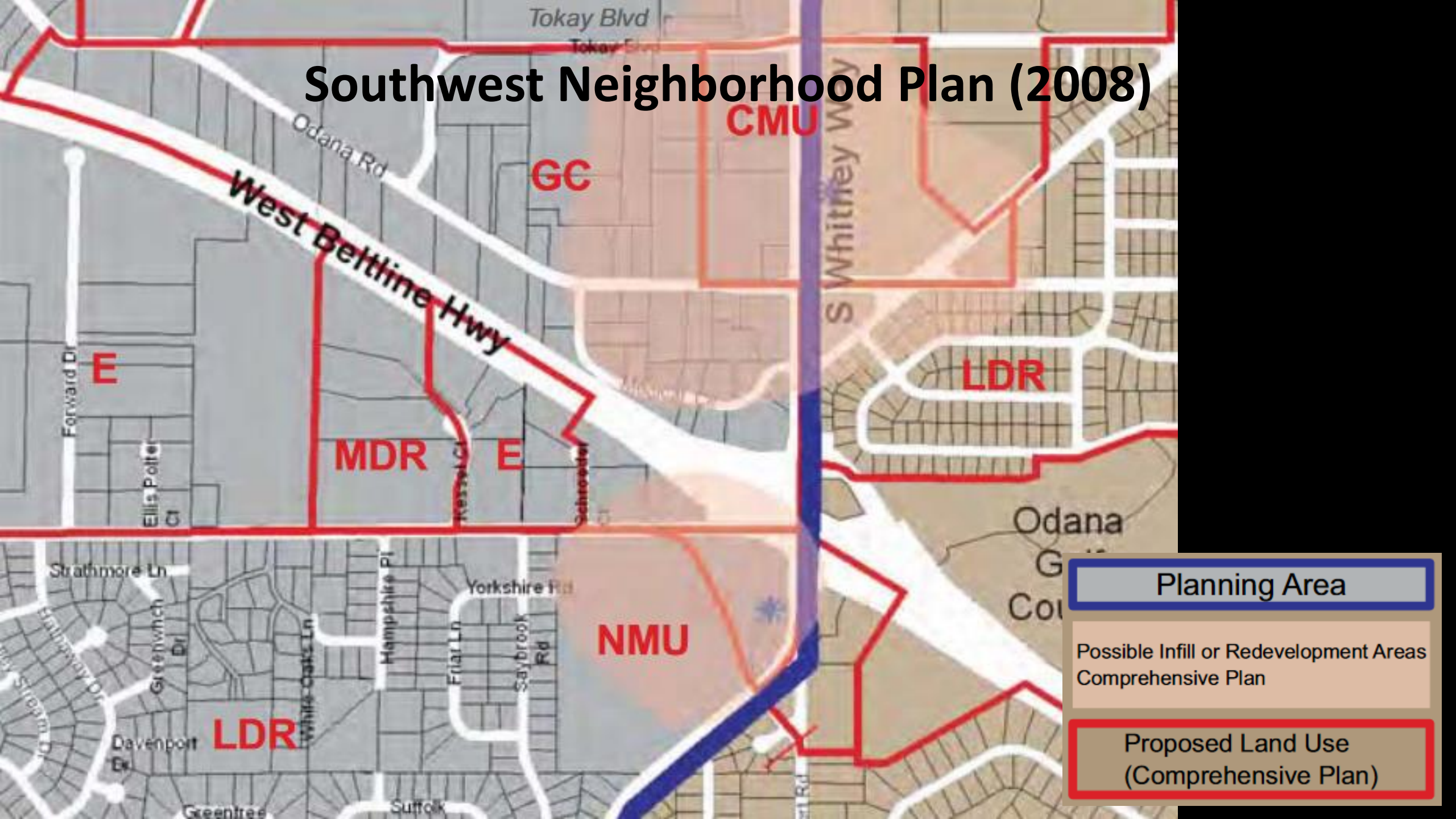
# Generalized Future Land Use Map



**General Density Range:  $\leq 130$**   
**No. of Stories: 2 - 6**

## Community Mixed Use

# Southwest Neighborhood Plan (2008)

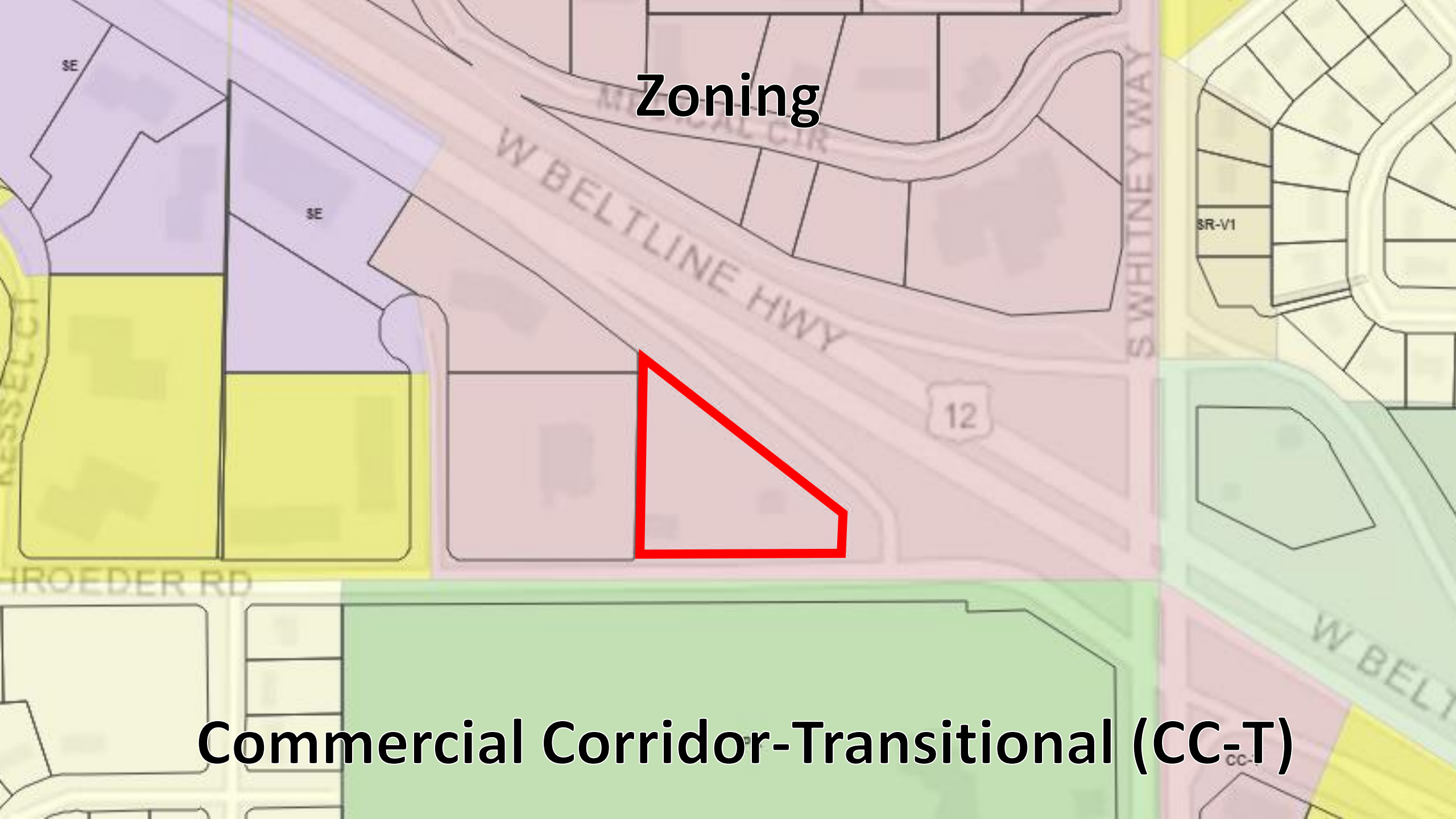


Planning Area

Possible Infill or Redevelopment Areas  
Comprehensive Plan

Proposed Land Use  
(Comprehensive Plan)

# Zoning



**Commercial Corridor-Transitional (CC-T)**

# Staff Contacts

**Kevin Firchow, Principal Planner, Planning Division**

**[kfirchow@cityofmadison.com](mailto:kfirchow@cityofmadison.com)**

**Colin Punt, Planner, Planning Division**

**[cpunt@cityofmadison.com](mailto:cpunt@cityofmadison.com)**