

The Salvation Army Women's Shelter

Emergency shelter for non-male identifying individuals experiencing homelessness.



The shelter is located at 630 East Washington Ave. The shelter houses non-male identifying individuals 24/7 without a limited stay policy.

Intake Hours:

4:15pm – 5:00pm

- Guests with employment or previously scheduled appointments who cannot arrive during intake hours must reserve a bed for late entry by calling the Women's Shelter line at **(608) 250-2226** before 4:00pm on each day of late entry.

Weather Nights

- Salvation Army and Porchlight work together to determine when inclement weather nights go into effect.

On a weather night, guests currently under suspension may access shelter that night. See the HSC website for more information: www.danecountyhomeless.org/inclementweatherinformation

COVID-19 Safety Precautions

Salvation Army staff has worked with community partners to create and implement new protocols to help keep shelter guests and staff safe during the pandemic.

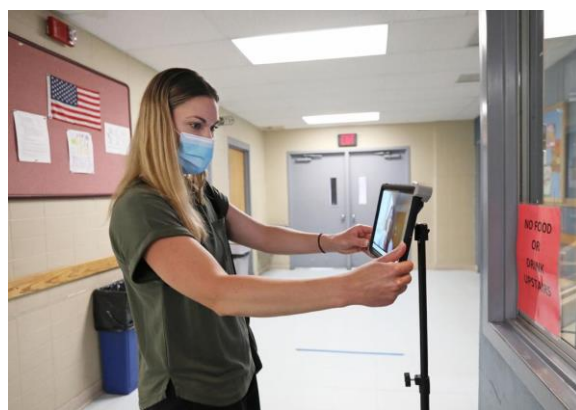
COVID-19 Health Assessments: Nurse volunteers screen everyone each night. Guests experiencing symptoms consistent with COVID-19, tests positive, or have been a contact to a positive case will be safely referred to the medical respite hotel.

Physical Distancing: All shelter guests must practice social distancing (6 feet from another person) and follow normal preventive actions, including consistently cleaning hands and avoiding touching eyes, nose, or mouth with unwashed hands.

Face Coverings: All guests and staff must wear *face coverings* at all times (other than when you are sleeping). Masks will be provided by staff if needed.

Hygiene: Increased hand sanitizing stations have been placed throughout the building.

Custodial Services: Additional maintenance staff have been hired for increased daily cleaning services including daily laundry.

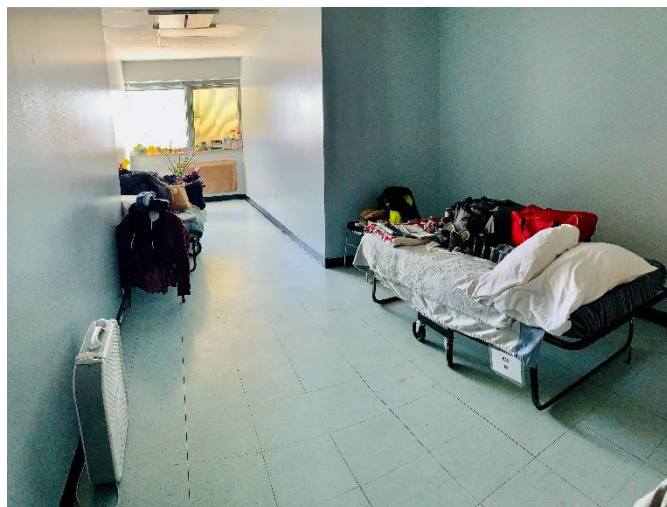


What is Different:

- 24/7 sheltering, meaning if you slept at Salvation Army the night prior you can stay at shelter the entire day and do not have to leave each morning.
 - The 90-day policy is no longer enforced.
 - Increased locked storage closets for your personal belongings.
 - Moved sleeping arrangements out of gym into rooms upstairs (**picture to the right**). Largest room has a capacity of 4 people.
 - Access to onsite laundry machines for personal laundry use.
 - Decreased length of time for suspensions.
 - Started offering mail services (can now use 630 East Washington Ave as your address for *essential* mail).
 - Increased sanitation procedures
-

Shelter Support Services Include:

- Meals three times a day
 - Breakfast: 7:15-7:45am
 - Lunch 12-12:30pm
 - Dinner: 5:00-6:00pm
 - Snack: 8:00pm
- Hygiene supplies
- Onsite Case Management and Coordinated Entry Services
 - Housing Search
 - Employment search
 - Benefit eligibility and connection
 - Housing applications
 - Community resource connections
 - Landlord mediation and support
- Increased onsite shelter staff support
- Emotional support animals approved with documentation
- Linens
- Personal Laundry
- Transportation assistance
- Housing Navigation
- Parking



Shelter Guidelines:

Guests are expected to observe all polices inside, outside and throughout the block radius.

- **To protect everyone's privacy, visitors are not allowed in the building or on property.**
- **Guests are responsible for their personal belongings.** If items are lost or stolen please report to shelter staff for immediate assistance.
- **Guests must be in the building by 9:00pm**, unless arrangements have been made and documented ahead of time with a staff member.
- **Guests will help create a safe and welcoming environment for everyone.**
- **Guests may not vandalize any shelter property.**
- **Guests may not bring weapons onto shelter property.**
- **Guests may not bring drugs or alcohol to shelter.** Guests may stay in shelter if under the influence but cannot use or bring substances inside.

Contact Information:

- **Phone Number to Reserve a Shelter Bed:** (608) 250-2226
 - **Shelter Cell Phone:** (608) 513-2392
 - **Shelter Reception Desk:** (608) 250-2200
 - **Website:**

<https://centralusa.salvationarmy.org/danecounty/>
