

# City of Madison Streets & Urban Forestry Division

ONBOARDING VIDEO #1

Agency Introduction and Organization Chart

March 2026



# What is the StUF Division mission?

*Provide a clean, safe, welcoming atmosphere for City of Madison residents, businesses, and guests by providing high quality, cost-effective, and essential public works services.*



# What does the Streets Division do?





# What does Urban Forestry do?



# Where to get more information?

- Streets Division websites:
  - [www.cityofmadison.com/Streets](http://www.cityofmadison.com/Streets)
  - [www.cityofmadison.com/Recycling](http://www.cityofmadison.com/Recycling)
  - [www.cityofmadison.com/Forestry](http://www.cityofmadison.com/Forestry)
  - [www.cityofmadison.com/FoodScraps](http://www.cityofmadison.com/FoodScraps)
  - [www.cityofmadison.com/eCycle](http://www.cityofmadison.com/eCycle)
  - [www.cityofmadison.com/BatteryRecycling](http://www.cityofmadison.com/BatteryRecycling)
  - [www.cityofmadison.com/LargeItem](http://www.cityofmadison.com/LargeItem)
  - [www.cityofmadison.com/Mulch](http://www.cityofmadison.com/Mulch)
  - [www.cityofmadison.com/DropOffSites](http://www.cityofmadison.com/DropOffSites)
  - [www.cityofmadison.com/Winter](http://www.cityofmadison.com/Winter)
  - [www.cityofmadison.com/YardWaste](http://www.cityofmadison.com/YardWaste)
  - [www.cityofmadison.com/BrushCollection](http://www.cityofmadison.com/BrushCollection)

## And our publications, too!



# 2025 RECYCLOPEDIA

### Contents

Using Your Collection Carts	2
Trash Collection	4
Recycling Collection	6
Frequently Asked Recycling Questions	7
Large Item Collection	11
Electronics Recycling	15
Brush Collection	16
Leaf, Yard Waste Collection	18
Drop-Off Sites	20
Drop-off Site Locations and Contacts	21
Urban Forestry	22
Move Outs and Cleanout Advice	24
Food Scraps	25
Winter Information	26
Top 30 Items	27
Streets and Urban Forestry Division Contacts	28

### STAY INFORMED

Services described in this book may change over time. The Streets Division's website will have the most current information. Residents are encouraged to sign up to receive News Releases and other communications from the City of Madison at [www.cityofmadison.com](http://www.cityofmadison.com). And, be sure to follow the City of Madison on your social media platforms.

### STREETS & URBAN FORESTRY DIVISION CONTACTS

#### Report Your Problems Online

Choose the correct form for cart swaps, missed collections, snow issues, or any other issue on the City's Report-a-Problem website.

Report-a-problem messages create an email sent directly to field supervisors to solve issues quickly.

» [www.cityofmadison.com/ReportaProblem](http://www.cityofmadison.com/ReportaProblem)

Trash, Recycling, Large Items, Brush Collection, Yard Waste & Leaf Collection, Drop-off Sites, Street Sweeping, Filling Potholes, Mowing Medians, Snowplowing, and Cleaning Graffiti

For neighborhoods on the east and north sides of Madison

STREETS EAST	Phone:	608-246-4532
	Email:	<a href="mailto:streets@cityofmadison.com">streets@cityofmadison.com</a>
	Office Hours:	7:30am to 4:00pm, Monday to Friday
	Office Location:	4602 Sycamore Avenue
	Website:	<a href="http://www.cityofmadison.com/Streets">www.cityofmadison.com/Streets</a>

For neighborhoods on the west and south sides of Madison

STREETS WEST	Phone:	608-266-4681
	Email:	<a href="mailto:streets@cityofmadison.com">streets@cityofmadison.com</a>
	Office Hours:	7:30am to 4:00pm, Monday to Friday
	Office Location:	1501 West Badger Road
	Website:	<a href="http://www.cityofmadison.com/Streets">www.cityofmadison.com/Streets</a>

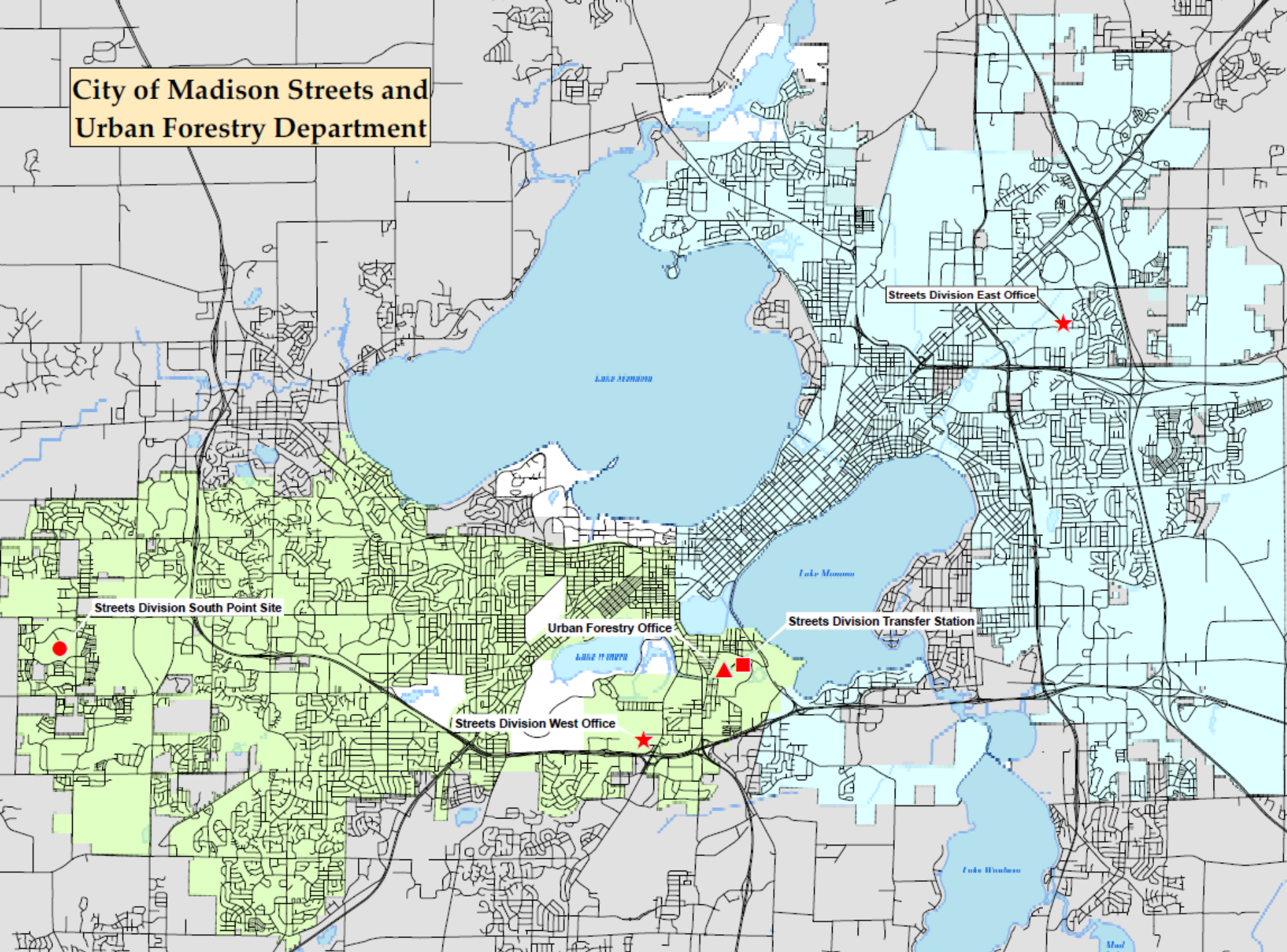
#### Trees Next to the Road and Other Urban Forestry Issues Citywide

URBAN FORESTRY	Phone:	608-266-4816
	Email:	<a href="mailto:forestry@cityofmadison.com">forestry@cityofmadison.com</a>
	Office Hours:	7:00am to 3:00pm, Monday to Friday
	Office Location:	1402 Wingra Creek Parkway
	Website:	<a href="http://www.cityofmadison.com/Forestry">www.cityofmadison.com/Forestry</a>
	After Hours Tree Emergency:	Call 911 so on-call arborists can be dispatched

#### Wood Mulch and Commercial Brush Processing

TRANSFER STATION	Phone:	608-266-4011
	Email:	<a href="mailto:streets@cityofmadison.com">streets@cityofmadison.com</a>
	Office Hours:	7:30am to 2:30pm, Monday to Friday
	Location:	121 East Olin Avenue
	Website:	<a href="http://www.cityofmadison.com/Mulch">www.cityofmadison.com/Mulch</a>

**City of Madison Streets and  
Urban Forestry Department**



**Office  
Phone  
Numbers**

**Streets West**  
608-266-4681

**Streets East**  
608-246-4532

**Forestry**  
608-266-4816



Charlie Romines

*Streets Division  
Superintendent &  
Public Works Lead*

Selected to become Madison's first Public Works Director since the early 1980s.

This change will have a ripple effects through Streets once change is finalized.

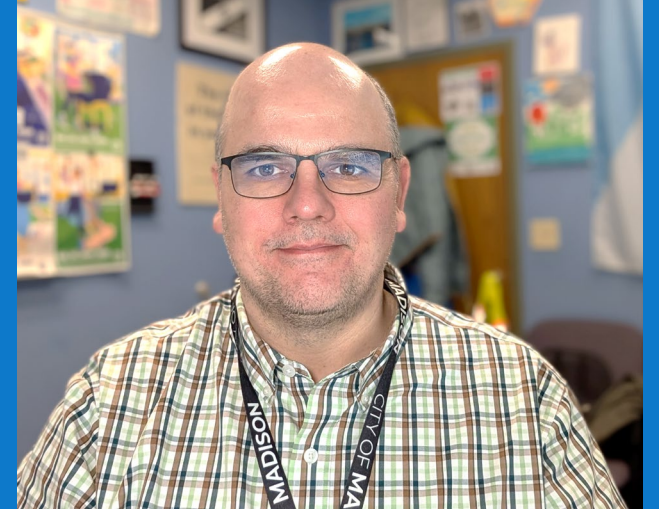
**Roger Kleist**  
*Assistant Streets  
Superintendent*



**Craig Klinke**  
*Interim City Forester*



**Bryan Johnson**  
*Recycling Coordinator /  
Public Information Officer*



# Contact Information

**Charlie Romines**

608-266-4680

[cromines@cityofmadison](mailto:cromines@cityofmadison)

**Roger Kleist**

608-246-4535

[rkleist@cityofmadison.com](mailto:rkleist@cityofmadison.com)

**Craig Klinke**

608-266-4816

[forestry@cityofmadison.com](mailto:forestry@cityofmadison.com)

**Bryan Johnson**

608-267-2626

[byjohnson@cityofmadison.com](mailto:byjohnson@cityofmadison.com)

[streets@cityofmadison.com](mailto:streets@cityofmadison.com)

# Report – a – Problem

[www.cityofmadison.com/  
ReportAProblem](http://www.cityofmadison.com/ReportAProblem)

Bikeway Concerns

+

Brush Collection

+

[Graffiti](#)

[Mailbox Damaged by a City Snow Plow](#)

Recycling Collection

+

Refuse Collection

+

Refuse & Recycling Carts

+

Snow Removal

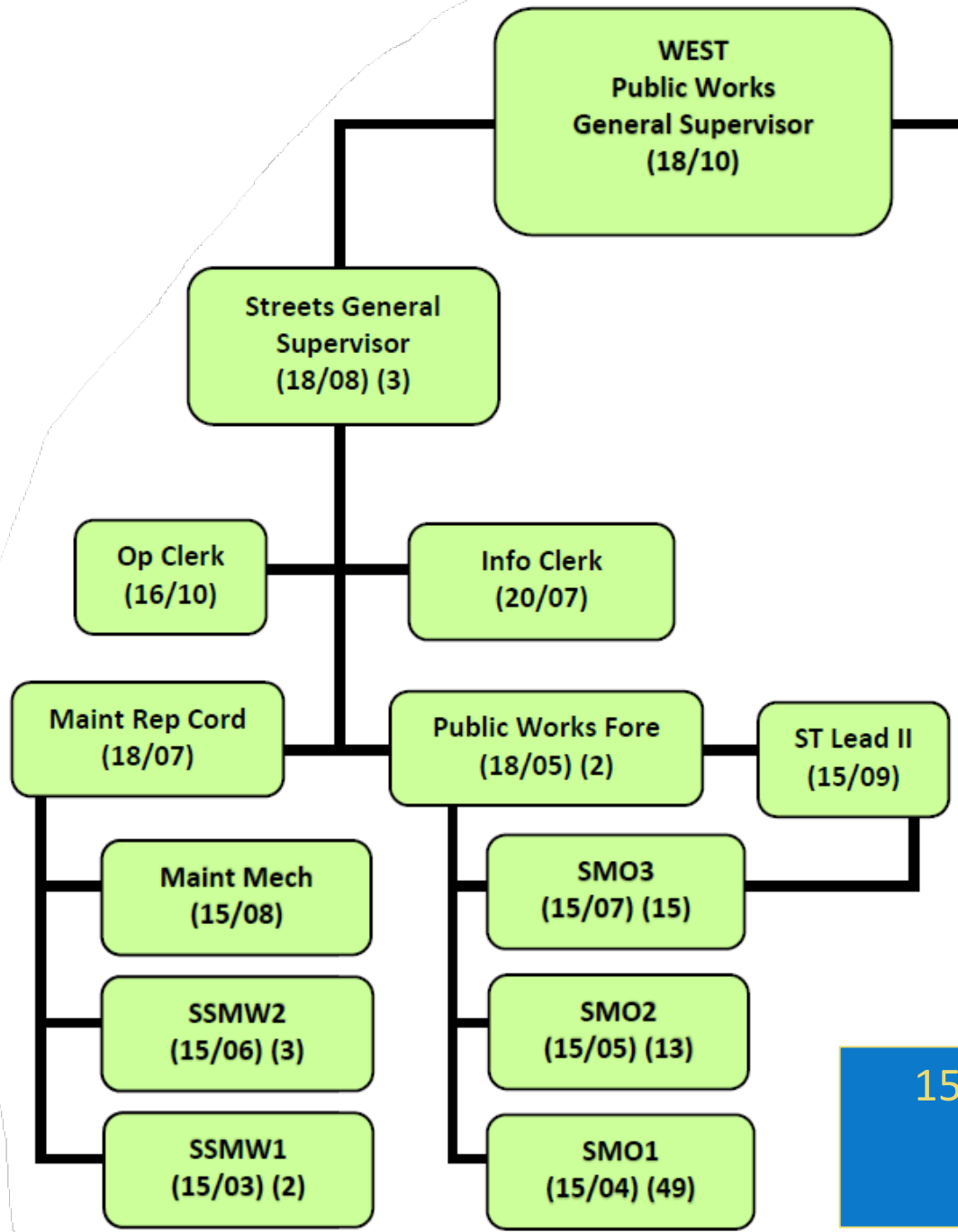
+

Tree Concerns

+

[Weeds & Overgrown Vegetation](#)

# Streets Operations Hierarchy

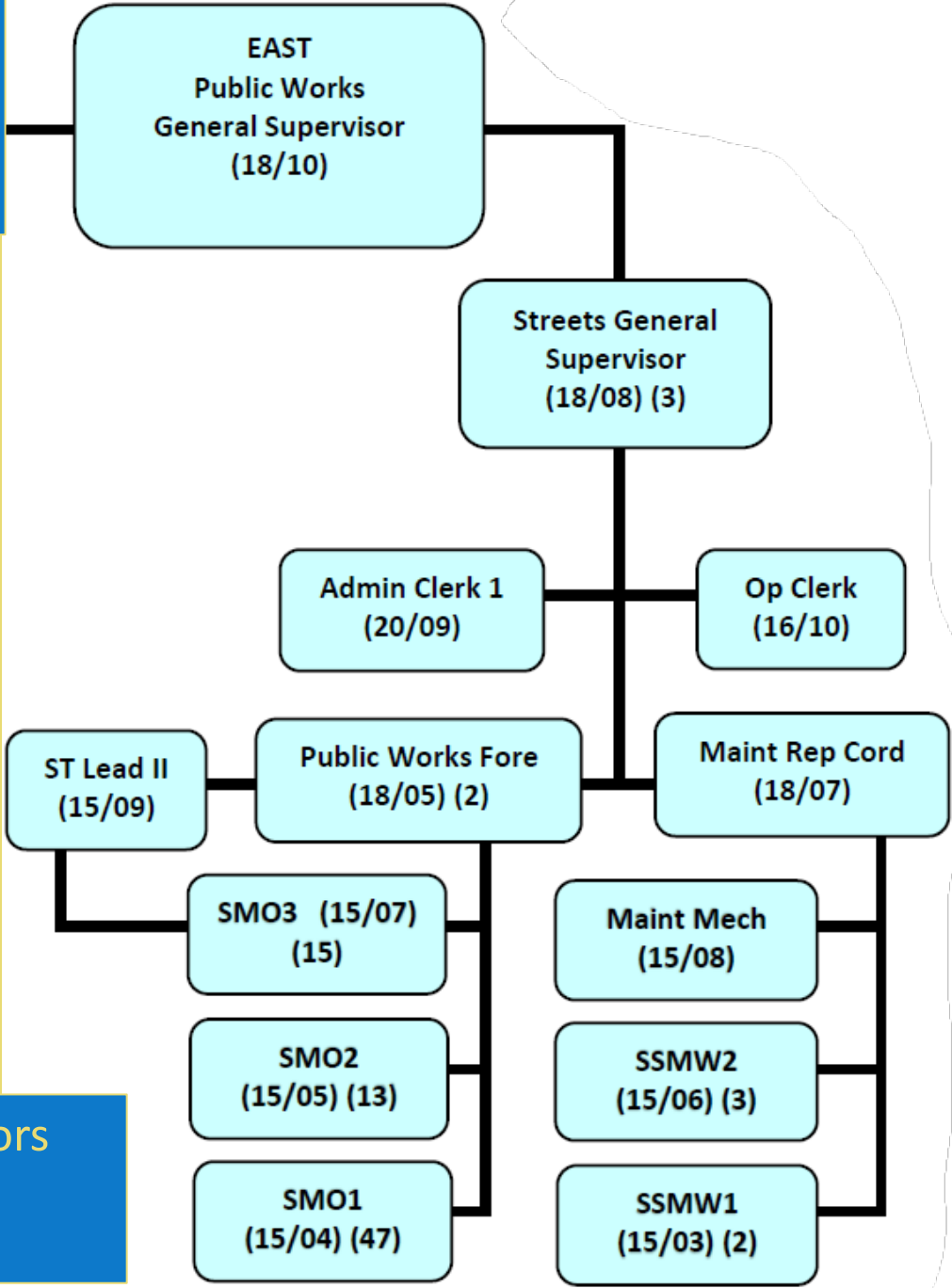


**West Public Works Supervisor:**  
[Open]

**East Public Works Supervisor:**  
Rachel Kelly

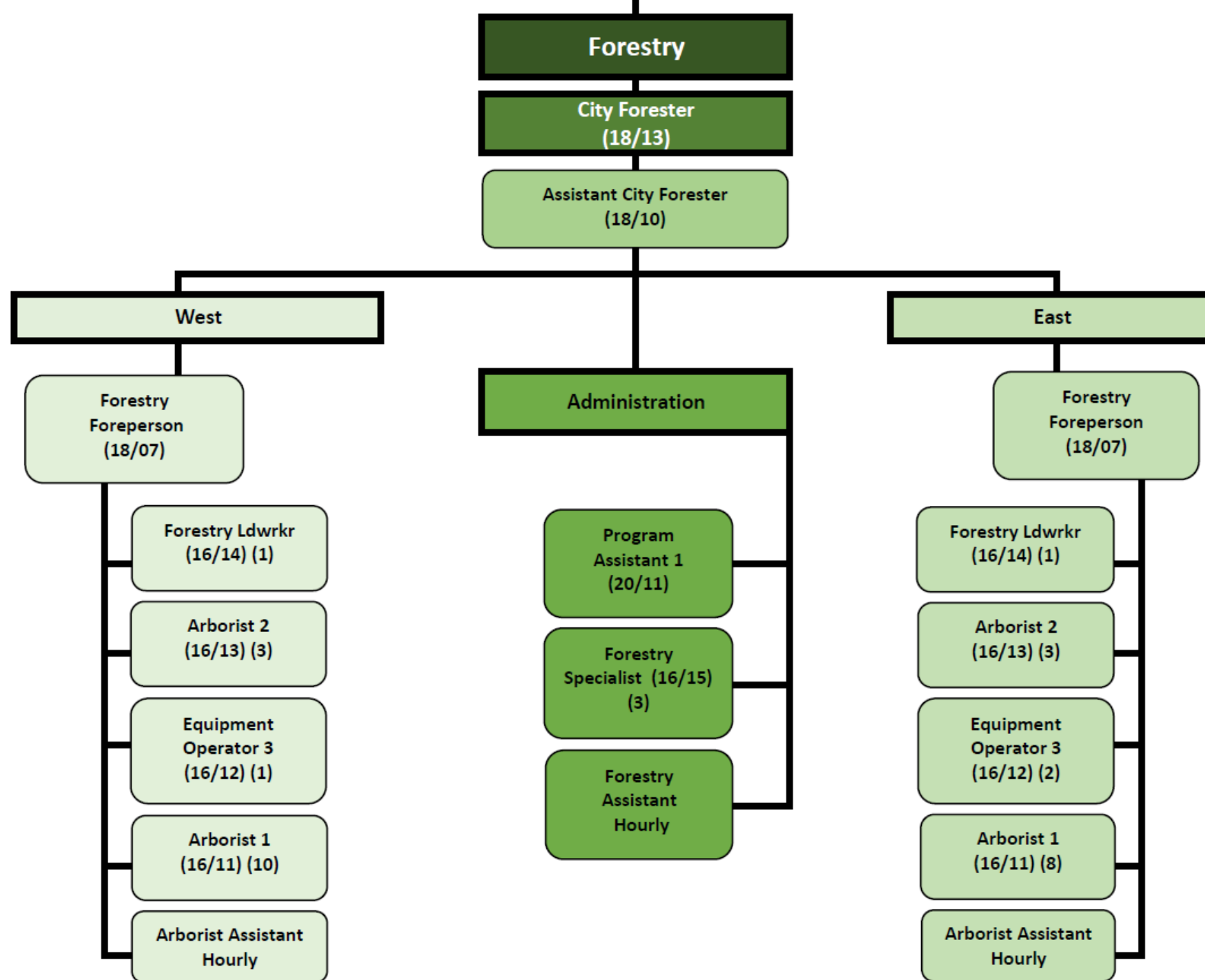
12 additional supervisors

**153 Machine Operators**  
2 lead workers  
4 clerks



# Urban Forestry Hierarchy

Interim City Forester:  
Craig Klinke



# Other Streets Division Positions

## Public Works Laborer

- Lead Worker (2) (15/09)
  - Laborer (10) (15/02)

*Laborer & lead worker positions float between Public Works agencies*

## Olin Avenue Transfer Station & Brush Processing

### Process Plant Supervisor (18/08)

- Operating Assistant (15/09)
- Operating Maintenance Workers (7) (15/07)
- SMO1 (15/04) (1)

GIS Specialist (18/10)

Streets Operations Analyst (18/10)

- Accounting Tech (20/13)



**Charlie Romines (Streets Superintendent)**

608-266-4680

[cromines@cityofmadison](mailto:cromines@cityofmadison)

**Bryan Johnson (PIO)**

608-267-2626

[byjohnson@cityofmadison.com](mailto:byjohnson@cityofmadison.com)

[streets@cityofmadison.com](mailto:streets@cityofmadison.com)

[www.cityofmadison.com/Streets](http://www.cityofmadison.com/Streets)