

# OUR CITY OF MADISON



## Engineering Division Introduction

Jim Wolfe, City of Madison City Engineer

# Vision and Mission



People - Places - Possibilities

CITY OF MADISON

# Our Agency's Vision and Mission

## Vision

- *City Vision - Our Madison:  
Inclusive, Innovative, & Thriving*

## Mission

*The mission of the City of Madison Engineering Division is to provide a multi-faceted combination of Public Works services to the citizens and customers of Madison in a fair and consistent manner that allows for and encourages public input.*

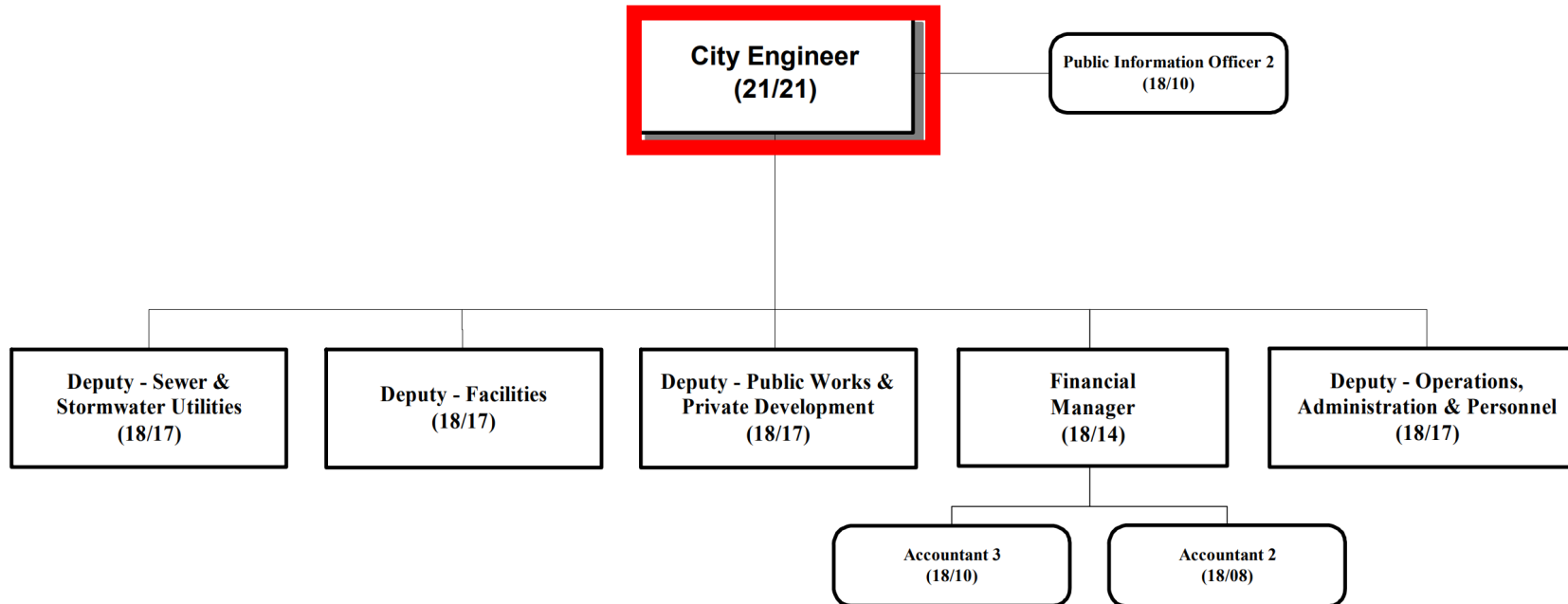
# Structure, Services, and Staff



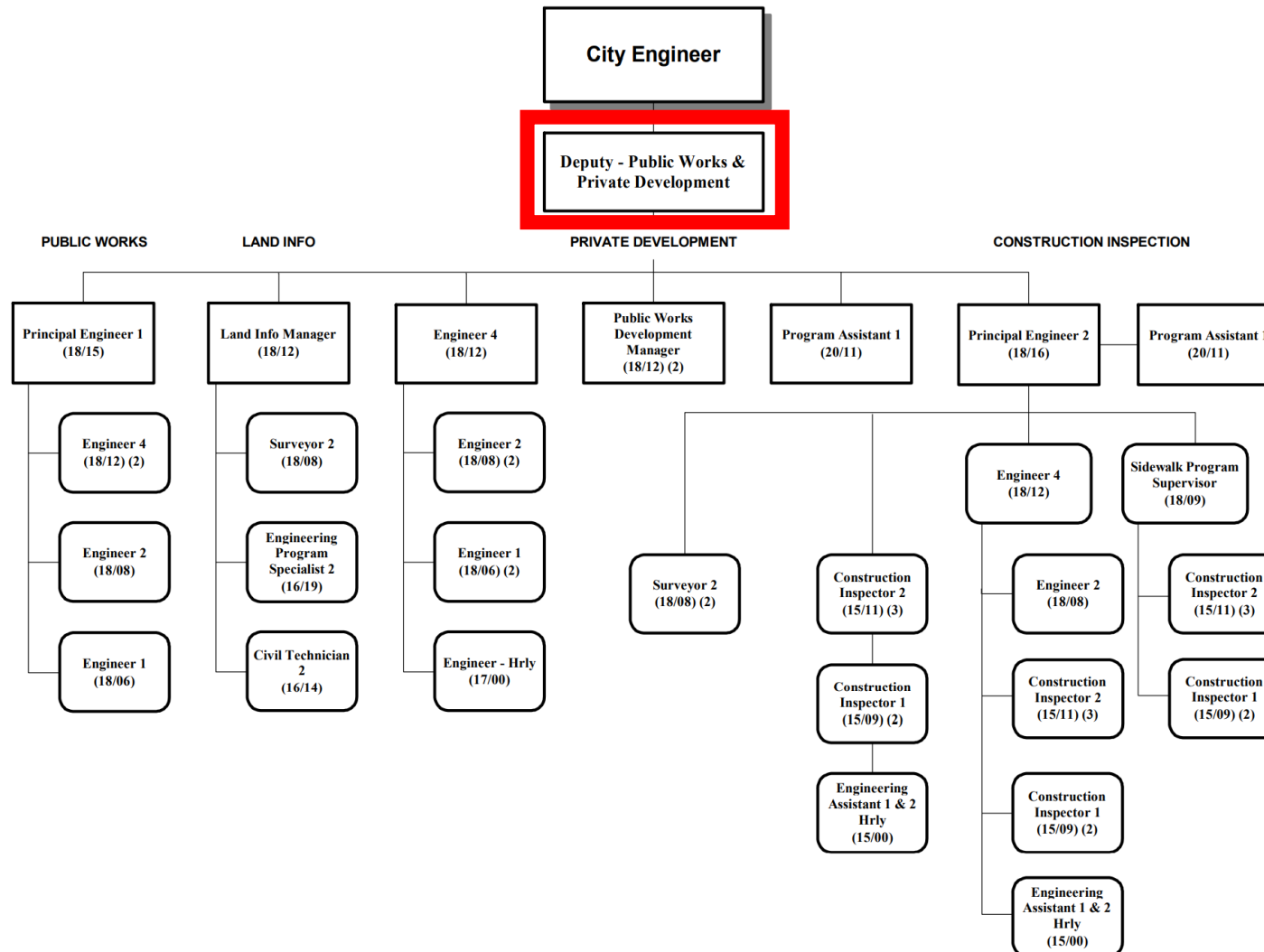
People - Places - Possibilities

CITY OF MADISON

# Structure: Engineering Division



# Structure: Public Works & Private Development



# Services/Areas: Public Works

- The Engineering Division Public Works team is responsible for:
  - Public Works construction project management, coordination, public information, and engagement.
  - Design of all streets, bike paths and sidewalks in the City of Madison.
  - The work of this section ensures continued safe and reliable transportation infrastructure. Our design section is different from the City's [Transportation Department](#) (which includes [Traffic Engineering](#), [Parking Utility](#), [Metro Transit](#)). This section of Engineering is also different than the [Streets Division](#), which is in charge of maintaining the City's street system. We work closely with these other agencies as our work has an impact on their operations and vice versa.



# Services/Areas: Private Development

- Private development works closely with the [City of Madison Development Services Center](#) to review and/or design all public streets, bike paths, sidewalk, stormwater, and sanitary infrastructure associated with new and/or redevelopment.
- Private Development works with Engineering's Land Records section to review and maintain public title and City of Madison records and the associated official mapping in conjunction with new and existing developments.



# Services/Areas: Construction Inspection

- Construction Inspection provides an on-site City of Madison representative for Public Works & Private Development infrastructure construction projects to make sure the project is constructed per plans and specifications.
  - Monitors, inspects contractor work on City public works construction
  - Responds to questions, complaints from residents impacted by construction projects
  - Surveys layout for new, proposed construction projects
  - Completes as-built records of construction for mapping/records
  - Inspects all work on new private construction in the public Right of Way (new areas of development, redevelopment projects that affect sidewalk or streets)
  - Manages the annual Citywide sidewalk program
  - Manages City Resurfacing Program
  - Abides by standard specifications for public works construction: recycles 90 percent of all concrete, including pavement, curb and gutter and sidewalk, and asphalt pavement

# Services/Areas: Land Information

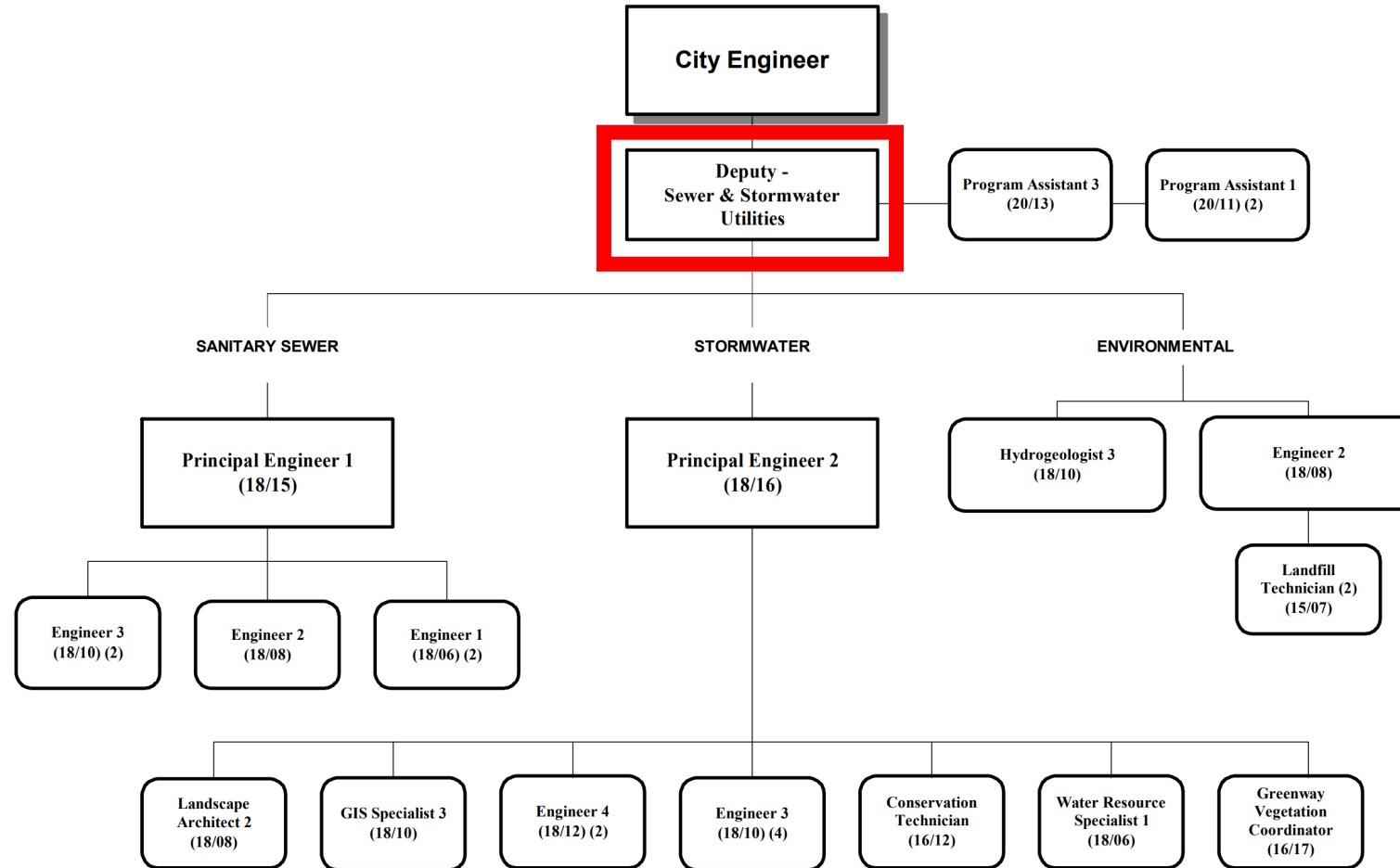
- Land Information provides the following services:
  - Reviews land record title and City of Madison records in conjunction with plans for new subdivisions, land divisions, conditional use permits, site plans, applications for building permits or any new development or redevelopment project proposed within the City of Madison.
  - Reviews and coordinates public and City of Madison records in conjunction with annexations/attachments/detachments to or from the corporate boundary, acquisitions, dedication or disposal of publicly owned lands within the City, eminent domain proceedings for public improvement projects, vacation of public right of ways required for redevelopment projects, release of or creation of public easements for public facilities and the general coordination of land rights of the City of Madison.
  - Maintains the City's Official Base Map.
  - Coordinates and/or prepares legal descriptions, provides mapping, and surveying services necessary for and of the above land record services required to support City of Madison Engineering and other City Agencies involved in the maintenance, acquisition or disposal of City of Madison real estate.

# Key Staff:

## Public Works & Private Development

- *Chris Petykowski, Deputy City Engineer – Public Works and Private Development*
  - Email: [cpetykowski@cityofmadison.com](mailto:cpetykowski@cityofmadison.com)
- *John Fahrney, Principal Engineer 2, Construction Inspection*
  - Email: [jfahrney@cityofmadison.com](mailto:jfahrney@cityofmadison.com)
- *Jeff Quamme, Land Information Manager*
  - Email: [jquamme@cityofmadison.com](mailto:jquamme@cityofmadison.com)

# Structure: Sewer & Stormwater Utilities



# Services/Areas: Sanitary Sewer

- The mission of the Sanitary Sewer Utility Section is provide safe, reliable, efficient and cost-effective collection of wastewater. This section is responsible for the sanitary sewer system. These services and programs protect the safety and welfare of the public and natural environment.
- The sanitary sewer system is a series of pipes and pumping stations that take wastewater from homes and businesses and deliver it to the [Madison Metropolitan Sewage District](#) for treatment of the wastewater.

# Services/Areas: Sanitary Sewer

- The Sanitary Sewer Utility directs the planning, design, construction and repair of public sanitary sewer facilities and performs the following:
  - Reviews all individual lot improvements for City's sanitary sewer capacity impacts
  - Replaces sewer facilities with street reconstructions to handle development
  - Designs sewer size and lays out sewer mains for new subdivision development
  - Assumes ownership and responsibility for maintenance and operation of sewers upon acceptance of the improvements by the Common Council
  - Designs sanitary sewer improvements with street reconstruction projects
  - Evaluates sewer camera footage, data to prioritize which areas of the City are in greatest need for sewer improvements
  - Completes all Regulatory Reporting Requirements with City's CMOM (Capacity, Management, Operation and Maintenance) for the WDNR (Wisconsin Department of Natural Resources).
  - Identifies sources of inflow and infiltration (I&I) from entering the City sanitary sewer system. I&I is clear water – stormwater and groundwater – which can lead to capacity issues and increases the cost of treatment.

# Services/Areas: Stormwater

- The mission of the Stormwater Utility Section is to manage stormwater services (drainage and water quality) to the public, while maintaining an equitable rate structure.
- The Stormwater Utility Section designs, reviews, constructs and maintains the City of Madison storm sewer system, which includes approximately 530 miles of pipe and 90 miles of open channel systems used for flood control and runoff water quality improvement.



# Services/Areas: Stormwater

- Specific parts of the system include:
  - Pipes, drains, greenways and inlets for stormwater collection
  - Ponds, rain gardens, greenways, and catch basins for water quality improvement
  - Flood control/modeling (view our [Watershed Study Flood Risk Map](#))
  - [Permitting](#), construction of ponds, greenways, shorelines and rain gardens
  - Funds street sweeping and leaf collection and performance of leaf studies
  - [Erosion control permitting](#)
  - Neighborhood planning process, pertaining to stormwater and water quality
  - Private development review pertaining to stormwater water quality
  - Designs both new and replacement storm sewer infrastructure
  - Provides guidance on rain garden construction through [Roger Bannerman Rain Garden Program](#)
  - Leads City and County effort to [reduce salt use](#)

# Services/Areas: Environmental

- The mission of the Environmental Section is to provide for the sustainable management and remediation of contamination on City owned land and in the right of way. The goal is to protect human health and the environment by complying with State and Federal environmental cleanup laws.

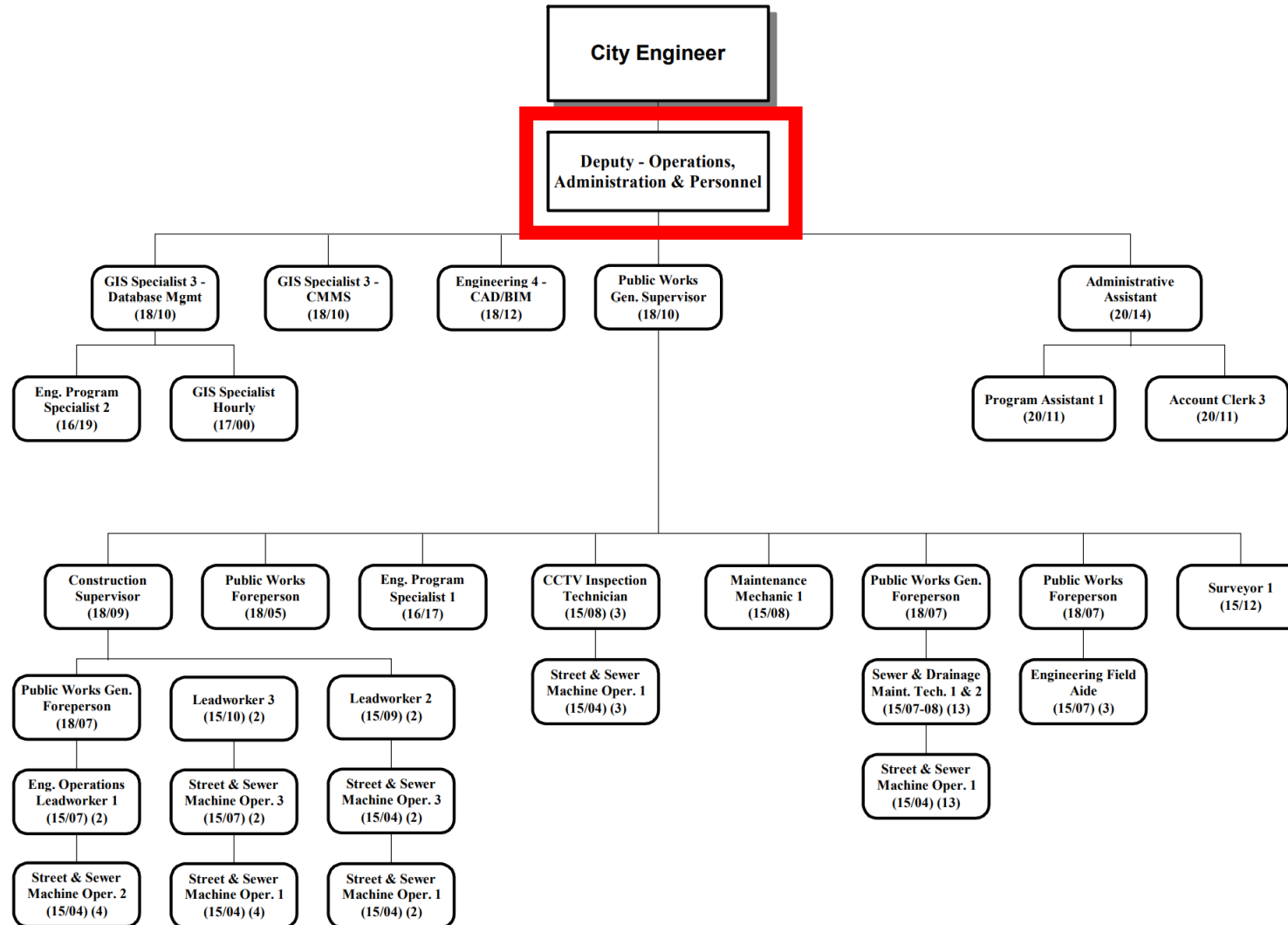
# Services/Areas: Environmental

- Works with Engineering Operations to manage environmental monitoring of the City's five closed landfills: Sycamore, Demetral, Olin/Quann, Mineral Point and Greentree Hills
- Conducts environmental screening of properties being dedicated to or purchased by the City. This is so the City knows what it's buying and the implications of buying contaminated property.

# Key Staff: Stormwater

- *Greg Fries, Deputy City Engineer – Sewer, Stormwater, Utilities*
  - Email: [gfries@cityofmadison.com](mailto:gfries@cityofmadison.com)
- *Janet Schmidt, Principal Engineer 2, Stormwater Sewer Design Section Manager*
  - Email: [jschmidt@cityofmadison.com](mailto:jschmidt@cityofmadison.com)
- *Mark Moder, Principal Engineer 1, Sanitary Sewer Design Section Manager*
  - Email: [mmoder@cityofmadison.com](mailto:mmoder@cityofmadison.com)
- *Brynn Bemis, Hydrogeologist 3*
  - Email: [bbemis@cityofmadison.com](mailto:bbemis@cityofmadison.com)
- *Jack Brody, Landfill Engineer 3*
  - Email: [jbrody@cityofmadison.com](mailto:jbrody@cityofmadison.com)

# Structure: Operations, Administration, Personnel



# Services/Areas: Administration & Personnel

- Engineering Technology

- Manages the division's specialized technology services.
  - GIS - Manages GIS services for Engineering assets (streets/paths, sanitary and storm sewer, landfill and facilities). Develops solutions to automate processes to increase efficiency and eliminate redundancies
  - CAD/BIM - Manages Engineering's CAD environment for design. Implementing Autodesk Construction Cloud – single unified solution to align projects through the planning-design-construction life-cycle of a project.
  - CMMS - Manages Engineering's Cityworks environment. Cityworks is a GIS-centric computerized maintenance management system that includes a paperless work order system for field staff.
  - Other - Process improvement and workflow development. Specialized technology (eg CCTV inspection software, SewerAI, etc.). Serves as Engineering's liaison with IT. Coordinates projects with other Public Works agencies.

- Personnel & Administrative Support

- Hiring
- Onboarding
- Labor Relations
- Payroll/Kronos
- FMLA, Workers Comp
- Safety
- Customer Service
- Procurement – equipment, vehicles, safety and work supplies,
- Permitting

# Services/Areas: Operations

- Sanitary Sewer
  - Scheduled preventive maintenance (PM) cleaning – every main in the system is cleaned a minimum of once every 3 years; mains with a history of conditions that could cause a back up (eg roots, grease) are cleaned more frequently to prevent back ups.
  - CCTV inspection – every main is internally inspected once every 10 years. This data is used to identify needed repairs, adjust PM cleaning schedules, and identify candidates for reconstruction or trenchless rehab.
  - Condition assessment and rating – Defects are coded in specialized software which then calculates a rating score. This information is used to assist in prioritizing reconstruction and trenchless rehab projects.
  - Repairs – Open-Cut and Trenchless; casting replacements to eliminate inflow and infiltration (I&I)
  - Emergency response - sewer back ups, overflows, odors, etc.
  - Utility locating and marking
  - Trenchless rehab inspection



# Services/Areas: Operations

- Stormwater Utility
  - Storm line cleaning
  - Spring/Fall CB and Special Structure Cleaning
  - CCTV inspection
  - Pipe & structure repairs
  - In-house construction of smaller scale drainage improvement projects
  - Greenway mowing
  - Utility locating and marking
  - Pond depth surveys
  - Dry weather inspections
  - Plugged Inlets – debris, snow/ice
  - Flood response
  - Retrieving lost items and wildlife from drains

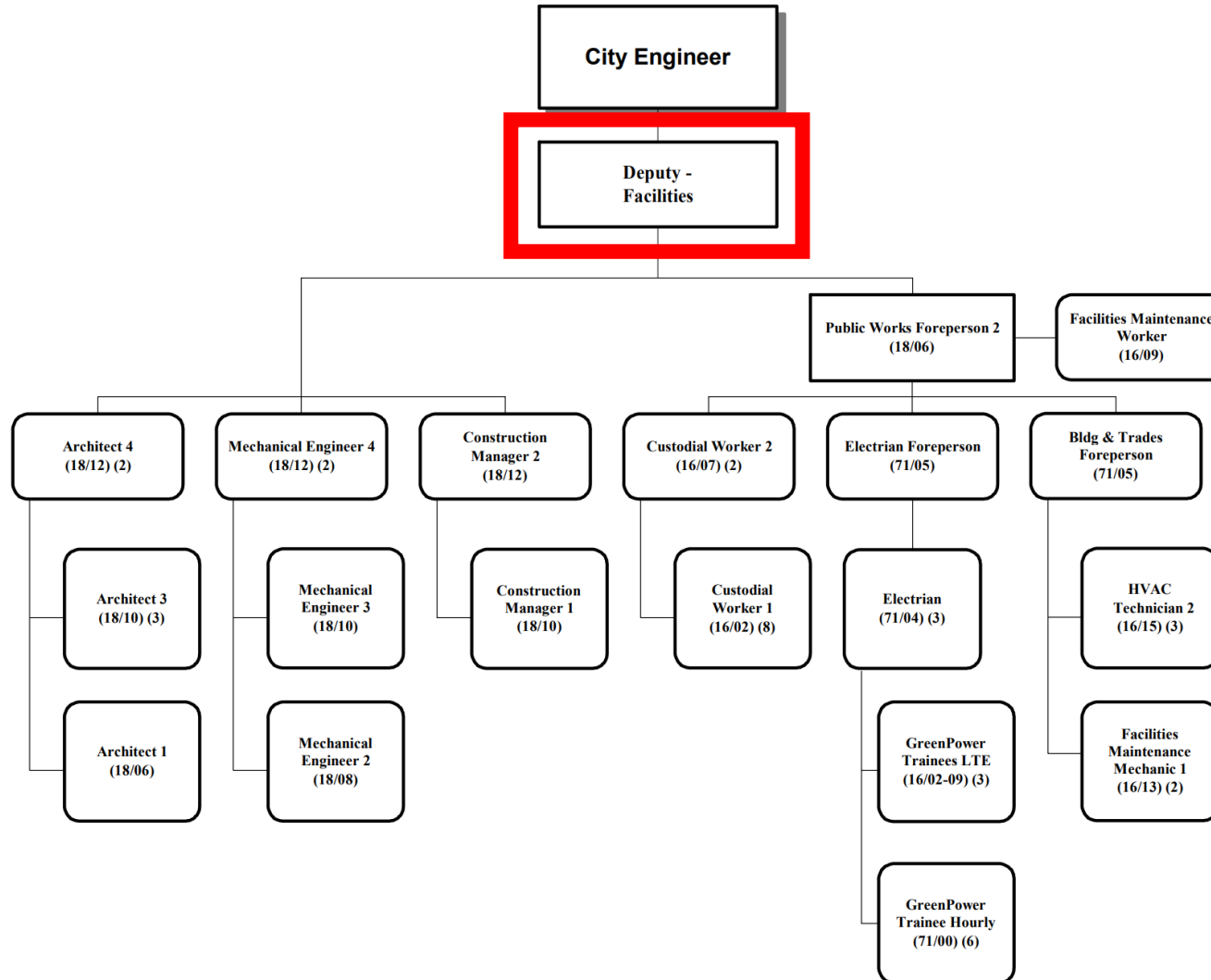
# Services/Areas: Operations

- Other
  - Snow removal
    - Bike paths (shared with Parks)
    - Sidewalks and bus stops (shared with Streets & Parks)
    - General Plow (supplement Streets equipment and personnel)
  - Building demolitions
  - Underground construction for GreenPower program.
  - Madison Infrastructure Training – Engineering (MI-TE) Program – concrete (sidewalk, bus stops, drive aprons), asphalt patching, utility casting replacement to reduce I&I
  - Surveys – as-builts and special requests

# Key Staff: Administration & Personnel

- *Kathy Cryan, Deputy Division Manager – Operations, Administration, Personnel*
  - Email: [kcryan@cityofmadison.com](mailto:kcryan@cityofmadison.com)
- *Chris Scharf, Construction Supervisor*
  - Email: [cscharf@cityofmadison.com](mailto:cscharf@cityofmadison.com)
- *Ryan Schmidt, Utilities Services Supervisor*
  - Email: [rschmidt@cityofmadison.com](mailto:rschmidt@cityofmadison.com)
- *Jim Streich, Sewer Maintenance Supervisor*
  - Email: [jstreich@cityofmadison.com](mailto:jstreich@cityofmadison.com)
- *Candice Kasprzak, Engineering Technology Section Manager*
  - Email: [ckasperzak@cityofmadison.com](mailto:ckasperzak@cityofmadison.com)
- *Cindy Hemenway, Administrative Assistant*
  - Email: [chemenway@cityofmadison.com](mailto:chemenway@cityofmadison.com)
- *Kong Vang, Account Clerk 3*
  - Email: [kvang@cityofmadison.com](mailto:kvang@cityofmadison.com)

# Structure: Facilities Management



# Services/Areas: Facilities Management

- Facilities Management is responsible for the design and project management of City-owned facilities, including supervision of remodeling and construction projects.
- The goal of this service is to implement projects that decrease energy use, conserve water, use renewable sources of energy, and provide high quality facilities.

# Services/Areas: Facilities Management

- The services provided by Facilities Management include:
  - Project Management, Design, and Construction
    - Large technically complicated City facilities including projects like Fire Station 14, Pinney Library, Madison Municipal Building, Midtown Police Station, and Fleet Services Maintenance Building
    - In-house small project design for office remodels, roofing projects, building demolitions, and historic preservation
    - In-house design of energy improvement projects such as lighting retrofits, mechanical upgrades, solar photovoltaic installations, and similar efforts to both reduce the City's energy demand as well as supply energy on-site
  - In-house expertise in Architecture, Engineering, Historic Preservation, Construction Management, Office Environments, Interior Design, and similar facility-related disciplines
  - Energy Analysis: Identify opportunities for energy savings and renewable energy utilization, perform site assessments and design for energy efficiency projects, and oversee energy efficiency activities for new and existing buildings
  - Coordinate city efforts to implement projects that lower energy use, conserve water, use renewable sources of energy, and provide a good quality indoor air environment
  - Administer the city's emergency warning siren program

# Services/Areas: Facilities Services

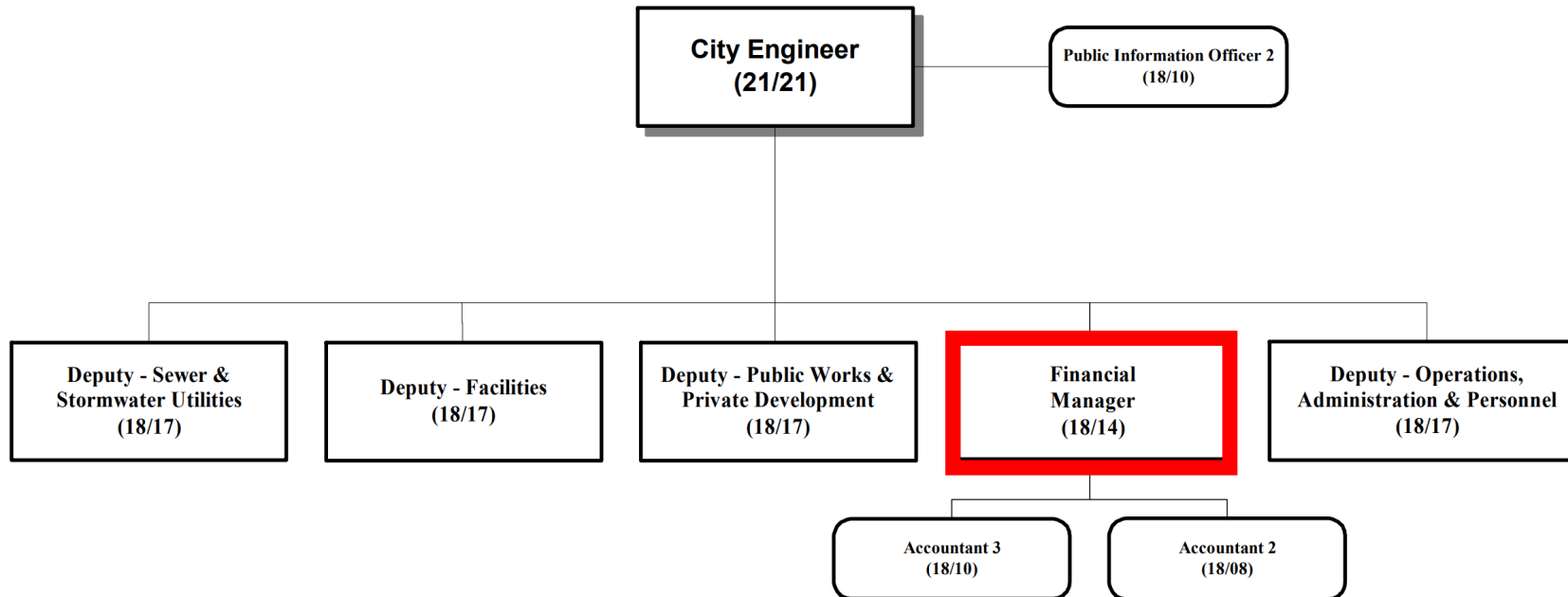
- The services provided by Facilities Services include:
  - Facilities maintenance
    - Responsible for facilities occupied by Engineering Fire, Fleet, Police, and Streets; multi-agency facilities (Fairchild and MMB); IT's Network Operations Facility; and mechanical systems for Parking Utility facilities.
    - Focus is pro-active preventive maintenance program for building systems and components to assure efficient and reliable operation.
    - Respond to service requests.
    - Provide after-hours emergency response.
  - In-house construction of electrical, plumbing and HVAC systems for city facilities
  - GreenPower
    - Through this program the City hires people from diverse and non-traditional trades backgrounds and teaches them how to install solar panels and work on energy efficiency projects in City facilities. This sets them up for success in the skilled trades which provide good, family-supporting jobs.
    - Over the last few years we have doubled the size of the program and we've also defined career pathways into other City jobs for those who would like to grow their career in City government.
  - Administers support and coordination for a variety of "odd job" agency needs. Recently, these have included COVID responses for Election Day and reopening preparations, public art storage and installations, assisting in preparation of temporary homeless shelters, and emergency flood response.
  - Custodial services for Engineering, Police, and MMB.



# Key Staff: Facilities Services

- *Bryan Cooper, Deputy City Engineer – Facilities*
  - *Email: [bcooper@cityofmadison.com](mailto:bcooper@cityofmadison.com)*
- *Stephen King, Facilities Services Coordinator*
  - *Email: [SRKing@cityofmadison.com](mailto:SRKing@cityofmadison.com)*

# Structure: Finance



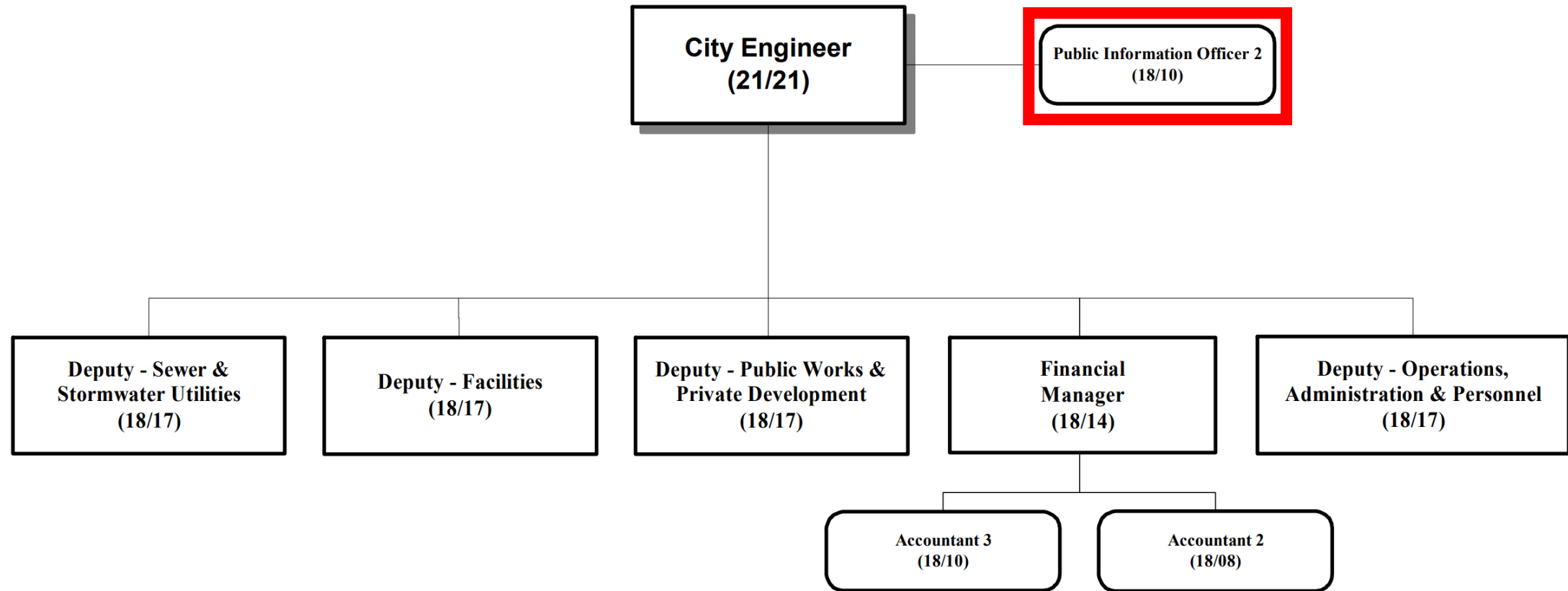
# Services/Areas: Finance

- The Engineering Division is responsible for the creation of four separate annual Operating Budget requests (Engineering, Landfill, Sewer Utility, and Stormwater Utility) and six separate annual Capital Budget requests (Engineering – Bicycle & Pedestrian, Facilities management, Major Streets, and Other Projects; Sewer Utility; and Stormwater Utility).
- See Budget Presentation for a full detailed breakdown.

# Key Staff: Finance

- *Steve Danner-Rivers, Finance Manager*
  - *Email: [sdannerrivers@cityofmadison.com](mailto:sdannerrivers@cityofmadison.com)*

# Structure: Division Communications



# Services/Areas: Division Communications

- Division external communications
- Division internal communications
- Media Relations, (Media Interviews, Requests)
- Public Engagement
- Citywide communications support and onboarding
- Website development, management, creation with IT
- Works across all sections of Engineering

# Key Staff: Division Communications

- *Hannah Mohelnitzky, Engineering Division Public Information Officer*
  - *Email: [hmohelnitzky@cityofmadison.com](mailto:hmohelnitzky@cityofmadison.com)*



# Common Citywide Collaborations



People - Places - Possibilities

CITY OF MADISON

# Common Citywide Collaborations

Staff in our agency most often collaborate with these agencies across TeamCity:

Agency	Topic(s)
All City Agencies	Our Facilities team works closely with all agencies to provide on space planning, design, and construction management services for new and remodeled facilities. Facilities also maintains facilities for Fire, Fleet, Engineering, Police, Streets, and agencies occupying the MMB. Also provide custodial services for a limited number of facilities.
Assessor's Office	Engineering Land Info team creates addresses and parcel polygons new parcels for Assessor's database and GIS.
Attorney's Office	Engineering consults with CAO contracts, resolutions and other matters.
Metro Transit	Our Public Works team works with Metro on street reconstruction projects and new developments to accommodate Metro's needs.
Parks Division	Engineering Stormwater & Parks meets monthly to discuss issues of mutual interest and coordinate projects and communications. Our respective Ops teams coordinate on snow removal, mowing, medians, emergency response, special projects and initiatives.

# Common Citywide Collaborations

Staff in our agency most often collaborate with these agencies across TeamCity:

Agency	Topic(s)
Planning, Community Economic Development Department	Engineering Public Works and Sewer & Stormwater Utility design teams work with the Planning Division on updating neighborhood plans and on new developments. Facilities works with Planning on long-range facility siting.
Streets Division	The Engineering Stormwater Utility works with the Streets Division commonly on issues where we have common interests: leaf collection, salt and sand use issues and street sweeping. Our respective Operations teams coordinate on: snow removal, mowing, medians, emergency response, special projects and initiatives.
Transportation Department	Engineering Public Works and Private Development sections works very closely with Transportation Department and Traffic Engineering Division on new and redevelopment as well as on prioritizing street reconstruction projects.
Water Utility	Engineering coordinates street and utility projects with Water Utility.

# Boards, Committees, Commissions

Our agency staffs the following City of Madison Boards, Committees and Commissions:

Board, Committee, Commission	Key Staff
Board of Public Works	Jim Wolfe, City Engineering Chris Petykowski, Deputy City Engineer – Public Works & Private Development Heidi Fleegel, Program Assistant 1 Leslie Parker Program Assistant 1
Street Use Staff Commission	John Fahrney, Principal Engineer 2

# Boards, Committees, Commissions

Our agency regularly attends and presents at following City of Madison Boards, Committees and Commissions:

Board, Committee, Commission	Key Staff
Common Council	Jim Wolfe, Chris Petykowski, Greg Fries, Janet Schmidt, Bryan Cooper
Finance Committee	Kathy Cryan, Greg Fries, Janet Schmidt, Chris Petykowski, Bryan Cooper, Facilities Project Managers
Landmarks Commission	Bryan Cooper, Facilities Project Managers
Parks Commission	Janet Schmidt
Plan Commission	Chris Petykowski, Greg Fries, Janet Schmidt, Bryan Cooper
Transportation Commission	Chris Petykowski, Transportation Project Managers
Transportation Planning and Policy Board	Chris Petykowski
Urban Design	Greg Fries, Janet Schmidt, Bryan Cooper, Facilities Project Managers

# Agency Resources



People - Places - Possibilities

CITY OF MADISON

# Engineering's Key Links

- Agency Website(s):
  - External website: <https://www.cityofmadison.com/engineering>
  - Developer, Contractor Homepage: <https://www.cityofmadison.com/engineering/developers-contractors>
  - Public Works External Home Website: <https://www.cityofmadison.com/public-works>
  - Open Contracts: <https://www.cityofmadison.com/business/pw/contracts/bidResults.cfm>
  - City's Flooding Website: <https://www.cityofmadison.com/flooding>
  - Engineering Projects Page: <https://www.cityofmadison.com/engineering/projects>

# Engineering's Key Links

- Key Report(s):
  - Capacity Maintenance Annual Report
  - Board of Public Works Annual Report
  - WISLR Annual Report
  - WPDES Annual Report
  - Annual Landfill Leachate Monitoring Results
  - Annual Landfill Monitoring and O&M Reports
  - Sewer Studies
  - [Watershed Studies](#)



# Engineering's Key Links

- [Wisconsin State Statutes](#)
  - Public Works
    - WI State Statutes
      - 62.14 Board of public works, 62.15 Public works, and 62.16 Street grades; service pipes
      - WI State Statutes Chapter 66 – Subchapters VII Special Assessments and IX Public Works and Projects
      - Chapter 85 Department of Transportation?
      - Chapter 236 Platting lands and recording and vacating plats.
  - Sewer Utility
    - WI State Statutes
      - 66.0821 Sewerage And Storm Water System
      - Chapter 281 - Subchapter IV Water And Sewage Facilities; Septage Disposal
    - Wisconsin Administrative Code
      - NR 110 Sewerage Systems
      - NR 208 Compliance Maintenances
  - Stormwater Utility
    - Wisconsin Administrative Codes
      - NR 103 Water Quality Standards For Wetlands
      - NR 116 Floodplain Management Natural Resources Code
      - NR 151 Runoff Management
      - NR 216 Storm Water Discharge Permits
      - NR 347 Sediment Sampling and Analysis, Monitoring Protocol and Disposal Criteria for Dredging Projects
      - NR 538 Management Of Accumulated Sediment From Storm Water Management Structures
    - Wi State Statues
      - Chapter 30 Navigable Waters, Harbors And Navigation

# Engineering's Key Links

- Madison General Ordinances

- 3.08 – City Engineer
- 9.20 - Licensing Of Concrete Layers, Asphalt Pavers, Landscape Pavers, Mudjackers, Sewer Drain Cleaners, Sewer CCTV Inspectors, And Private Snow Removal Equipment Operators.
- Chapter 10 - Streets, Alleys, Sidewalks And Gutters
  - 10.02 - Grades.
  - 10.03 - Damage To Sidewalk, Curb And Gutter, And Driveway Approach To Be Repaired.
  - 10.05 - Occupancy Of Rights-of-way.
  - 10.053 - Wireless Telecommunications Facilities In The Right-of-way.
  - 10.06 - Specifications For Construction Of Sidewalks—width Of Walks.
  - 10.07 - Grade For Sidewalks—location.
  - 10.08 - Construction Of Driveway Approaches And Parking Facilities.
  - 10.09 - Construction, Reconstruction And Repair Of Sidewalks, Terraces, Curbs And Gutters.
  - 10.15 - Curb Cuts And Driveway Approaches.
  - 10.23 - Obstruction Of Streets And Sidewalks.
  - 10.25 - Plantings In The Terraces.
  - 10.34 - Street Numbers.
  - 10.38 - Construction Of Heated Concrete Sidewalk.
- Chapter 18 - Plumbing Code
- Chapter 19 - Electrical Code
- Chapter 20 - Impact Fee Ordinance
- 23.21 - Pruning Or Removing Trees In Public Highways Or Public Places.
- 24.08 - Noise Control Regulation.
- Chapter 28 – Zoning
- Chapter 29 - Building Code
- Chapter 30 - Heating, Ventilating And Air Conditioning Code
- 33.07 - Board Of Public Works.
- Chapter 35 - The Public Sewerage System
- Chapter 37 - The Public Stormwater System Including Erosion Control

# Engineering's Key Links

- Council Resolutions

- Facilities

- RES-08-00109 Requiring Green Building Certification for new City buildings

- Public Works

- RES-22-00723 Approving and Adopting an Updated Policy for Assessing Street Improvements
- RES-23-00043 Approving the City of Madison Standard Specifications for Public Works Construction, 2023 Edition

- Sewer Utility

- RES-21-00668 Updating the City's policy for assessment of sanitary sewer improvements to serve unsewered and sewer lands located within the current and future boundaries of the City of Madison

- Stormwater Utility

- RES-22-00045 Stormwater Utility Credit Policy (Rate Adjustment Policy) and Fee Correction
- RES-22-00073 Assessment of Storm Sewer and Drainage Improvements

# Our Agency's Acronyms- Public Works & Private Development

Common acronyms used by our agency include:

BPW	• Board of Public Works
BVC	• Best Value Contracting
CO	• Change Order
CSM	• Certified Survey Map
PIM	• Project Information Meeting
PnP	• Plan and Profile
ROW	• Right of Way
TIP Map	• Transportation Improvement Plan Map
ULO	• Utility Line Opening

# Our Agency's Acronyms- Sewer & Stormwater

Common acronyms used by our agency include:

DGI

• Distributed Green Infrastructure

BMP

• Best Management Practice

EC

• Erosion Control

MS4

• Municipal Separate Storm Sewer System

TSS

• Total Suspended Solids

BOD and COD

• Biological Oxygen Demand and Chemical Oxygen Demand

CIPP

• Cured-in-Place Pipe

I&I

• Inflow & Infiltration

CMOM

• Capacity, Management, Operation, & Maintenance

# Our Agency's Acronyms- Environmental

Common acronyms used by our agency include:

PFAS

• Polyfluoroalkyl substances

PPM

• Parts per Million

PPB

• Parts per Billion

PPT

• Parts per Trillion

- PFAS are a group of chemicals used most commonly in waterproofing and firefighting – we now know them to be cancer causing at extremely low levels.
- PPM, PPB and PPT are very difficult concepts to think about – but for contaminants like PFAS it is important. PFAS have a limit in drinking water of 20 PPT - this can be visualized as 20 drops of water in an Olympic sized swimming pool or 20 SECONDS out of 32,000 YEARS

# Our Agency's Acronyms- Operations

Common acronyms used by our agency include:

CB

- Catchbasin

CCTV

- Closed Circuit Television Inspection

CMAR

- Capacity Maintenance Annual Report

FOG

- Fats, Oils, and Grease

MI-TE

- Madison Infrastructure Training – Engineering Program

PM

- Preventive Maintenance

SAS

- Sanitary Access Structure

SSO

- Sanitary Sewer Overflow

# Our Agency's Acronyms- Engineering Technology

Common acronyms used by our agency include:

**ACC**

- Autodesk Construction Cloud

**BIM**

- Building Information Modeling

**CAD**

- Computer Aided Design

**CMMS**

- Computerized Maintenance Management System

**GIS**

- Geographical Information Systems

**LiDAR**

- Light Detection and Ranging



# Our Agency's Acronyms- Facilities

Common acronyms used by our agency include:

LEED	• Leadership in Energy & Environmental Design
A/E	• Architect/Engineer
GC	• General Contractor
Cx	• Commissioning and/or Commissioning Consultant
MEP	• Mechanical, Electrical, and Plumbing
FFE	• Furniture, Fixtures, & Equipment
POS	• Purchase of Services contract
T&M	• Time & Material
PV	• Photovoltaic (solar)

# Our Agency's Acronyms- External Agencies

Common acronyms used by our agency include:

**CARPC**

- Capital Area Regional Area Planning Commission

**FEMA**

- Federal Emergency Management Agency

**MAMSWaP**

- Madison Area Municipal Stormwater Partnership

**USACE**

- United States Army Corps of Engineers

**WDNR**

- Wisconsin Department of Natural Resources

**WHS**

- Wisconsin Historical Society

**WisDOT**

- Wisconsin Department of Transportation

# OUR CITY OF MADISON



## Let's Connect!

Jim Wolfe, City of Madison City Engineer

[jwolfe@cityofmadison.com](mailto:jwolfe@cityofmadison.com)

608-266-4099

CITY OF MADISON