

OUR CITY OF MADISON



Madison Fire Department
Fire Chief Chris Carbon

Vision and Mission



People - Places - Possibilities

CITY OF MADISON

Mission Statement

The Madison Fire Department exists to help people.

Vision Statement

The Madison Fire Department is committed to providing high-quality, professional emergency services that are accessible equally to all members of the community. Our top priority is maintaining the dignity and respect of the individual(s) receiving that service. We believe that through education, prevention, and emergency service delivery, we can make the City of Madison one of the safest places to live, work, and play.

Vision Statement (continued)

Our employees within the organization are valued to the highest level. The experience and diversity of our employees are considered and factored in decisions made within the organization to provide for the safest community possible.

Vision Statement (continued)

The Madison Fire Department is prepared to handle all emergencies and issues that we are called upon to mitigate in our community and surrounding region. We will handle all incidents, small or large, with the utmost professionalism.

Structure, Services, and Staff



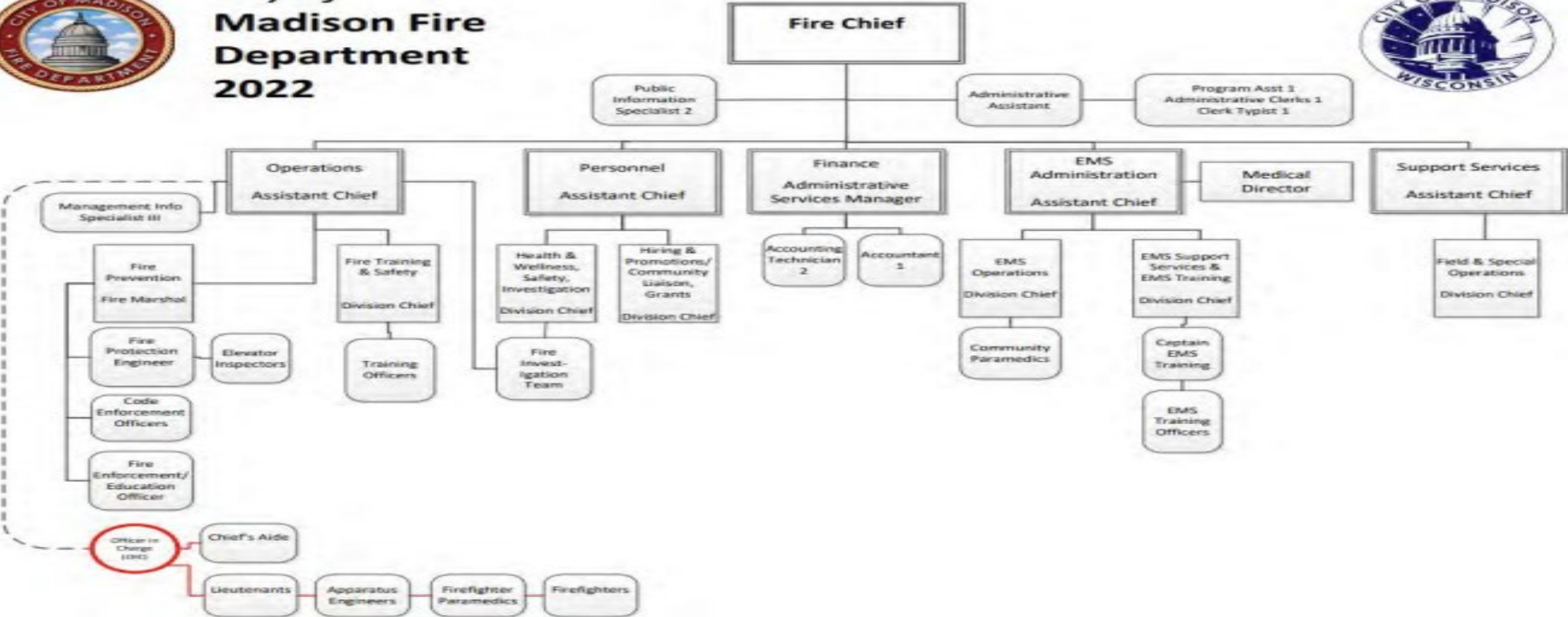
People - Places - Possibilities

CITY OF MADISON

Organizational Chart



**City of
Madison Fire
Department
2022**



Emergency Medical

- Approximately 77% of the MFD's emergency calls are medical in nature. All MFD firefighters are trained and licensed Wisconsin Emergency Medical Technician (EMT) – Basics. Among the many skills they can perform, including initial life-saving interventions such as CPR, defibrillation, bleeding management, airway management, overdose care, and the treatment of allergic reactions.

Emergency Medical (continued)

- In addition, there are nine Advanced Life Support ambulances across the city staffed by two paramedics each. All paramedics are certified firefighters and also rotate onto engines and ladders. Our medics are trained to provide many of the immediate life-saving medications and procedures performed in an emergency room. Among others, specialties include cardiac care and airway management.

Fire Protection

- Engine and Ladder companies serve from fourteen fire stations across the city of Madison. Each company consists of one lieutenant (company officer), one apparatus engineer (driver), and two firefighter/EMTs.
- Life safety (search and rescue) is each company's top priority, followed by incident stabilization, and property conservation.

Fire Prevention

- Our Code Enforcement Officers and commissioned station-based personnel inspect all public buildings twice a year to ensure local occupancies are in compliance with fire code and city ordinances.
- Other duties of the Fire Prevention Division include testing new sprinkler and alarm systems and reviewing floor plans for new buildings to ensure they are constructed in compliance with fire code.

Community Education

- Commissioned station-based personnel provide ongoing support to our fire prevention division by participating in school visits, fire drills, and educational initiatives such as Safety Town and Safety Saturday.
- The MFD is a proud partner to help promote PulsePoint. This app is designed to alert CPR trained citizens via smart phones to greatly improve the chances of a victim's survival during a sudden cardiac arrest.

Community Paramedics

- Aspires to support, educate, and empower at-risk individuals to improve their overall health.
- Community Paramedics pay home visits and connect patients with resources to help them take charge of their own healthcare.

Community Alternative Response

- Community Alternative Response Emergency Services (CARES) is designed to serve as an additional resource for behavioral health emergencies.
- CARES consists of two response teams comprised of one MFD community paramedic and one Journey Mental Health Center crisis worker. The teams also focus on building relationships throughout the community to ensure that patients have been connected with the appropriate services.

Common Citywide Collaborations



People - Places - Possibilities

CITY OF MADISON

Common Citywide Collaborations

Staff in our agency most often collaborate with these agencies across TeamCity:

Agency	Topic(s)
Madison Police	Response, Training, Special Events
Engineering	Building maintenance, Public works contracts, permits, sustainability
Fleet Services	Fleet maintenance, fleet purchasing, safety
Human Resources	Hiring and promotions, employee development, labor relations

Agency Resources



People - Places - Possibilities

CITY OF MADISON

Madison Fire Department Key Links

- Website: <https://www.cityofmadison.com/fire>
- Annual Reports:
 - [https://www.cityofmadison.com/fire/documents/MFD%202021%20Annual%20Report-reduced%20size\(1\).pdf](https://www.cityofmadison.com/fire/documents/MFD%202021%20Annual%20Report-reduced%20size(1).pdf)
 - <https://www.cityofmadison.com/fire/documents/MFD%202020%20Annual%20Report.pdf>
 - <https://www.cityofmadison.com/fire/documents/2019%20Annual%20Report.pdf>
 - <https://www.cityofmadison.com/fire/documents/MFD%202018%20ANNUAL%20REPORT.pdf>

Our Agency's Acronyms

LT

- Lieutenant

AE

- Apparatus Engineer

FF/PARA

- Firefighter/Paramedic

FF/EMT

- Firefighter/Emergency Medical Technician

CARES

- Community Alternative Response to Emergency Services

PIO

- Public Information Officer

Our Agency's Acronyms

NFPA

- National Fire Protection Association

SOG

- Standard Operating Guidelines

PPE

- Personal Protective Equipment

SCBA

- Self-Contained Breathing Apparatus

ALS

- Advanced Life Support

BLS

- Basic Life Support

Our Agency's Acronyms

DNR

- Do Not Resuscitate

CPR

- Cardiopulmonary Resuscitation

ePCR

- Electronic Patient Care Report

LODD

- Line Of Duty Death

ETA

- Estimated Time of Arrival

IAP

- Incident Action Plan

OUR CITY OF MADISON



Let's Connect!

Fire Chief Chris Carbon

ccarbon@cityofmadison.com

608-266-6564

CITY OF MADISON