

# OUR CITY OF MADISON



## Fleet Division Introduction

Mahanth Joishy, *Fleet Superintendent*

# Vision and Mission

Inclusive – Innovative – Thriving



CITY OF MADISON

# Our Agency's Vision and Mission

## Vision

- Our Madison: Inclusive, Innovative, & Thriving

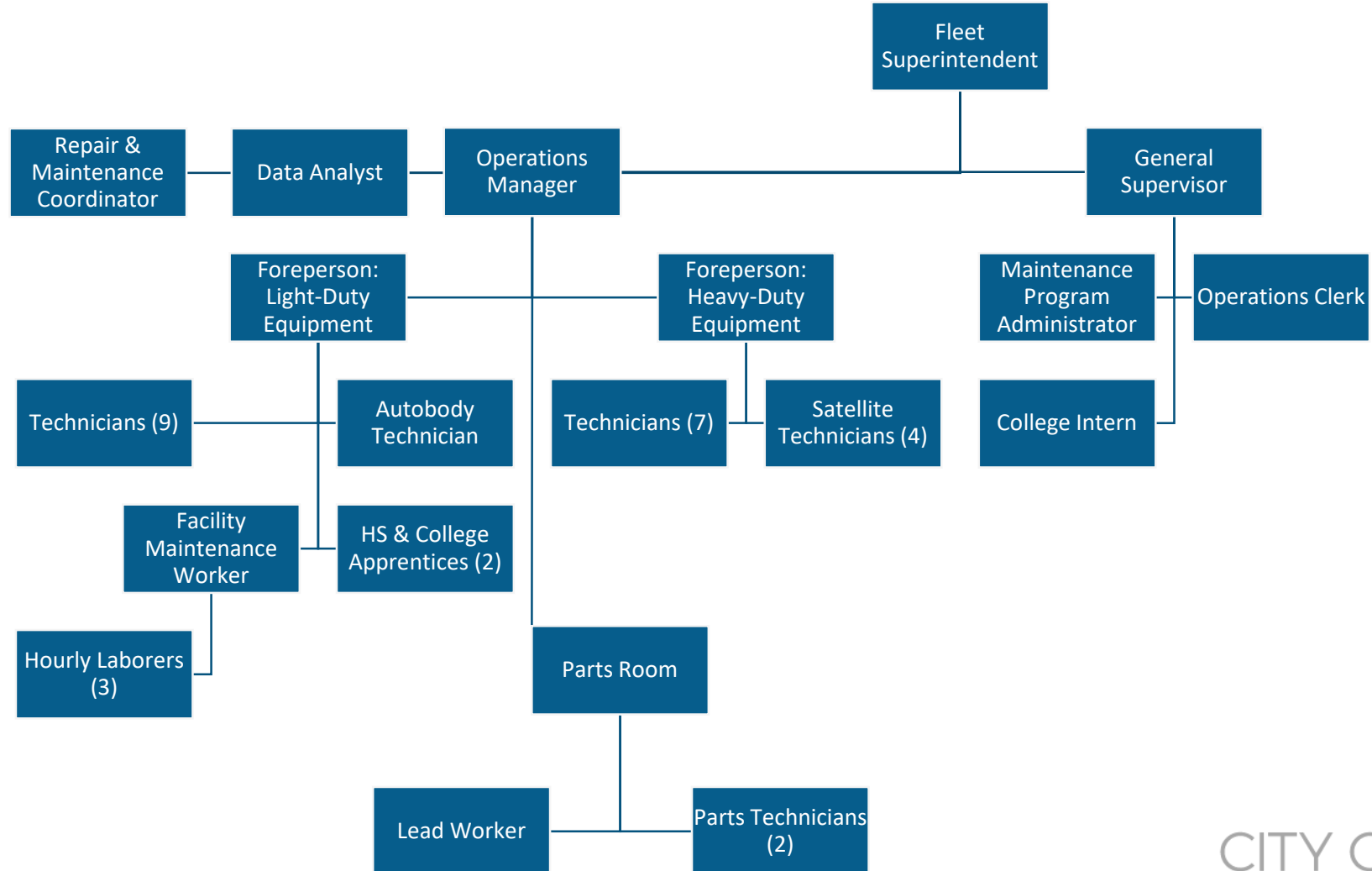
## Mission

- Fleet's mission is to ensure other City agencies and departments have the equipment they need to safely and effectively serve our community.

# Structure, Services, and Staff



# Structure



# Services

- Vehicle and equipment acquisition and set-up
- Preventative maintenance and repair
- Parts inventory
- Fueling operations
- Pool cars
- Auction of equipment and end of useful life

# Key Staff

- Randy Koch, Operations Manager
  - Parts, Maintenance, and Repair
- Rachel Darken, Interim Public Works General Supervisor
  - Fuel, Budget, Personnel, Apprenticeships
- Tyson Roessler, Maintenance & Repair Coordinator
  - Acquisitions, New Equipment Training
- Ilknur Uludag, Data Analyst
  - Analysis, GPS, Vision Zero

# Common Citywide Collaborations

Inclusive – Innovative – Thriving



CITY OF MADISON



# Common Citywide Collaborations

Staff in our agency most often collaborate with these agencies across TeamCity:

| Agency         | Topic(s)           |
|----------------|--------------------|
| Transportation | Vision Zero        |
| All Agencies   | Service Operations |
|                |                    |
|                |                    |

# Agency Resources

Inclusive – Innovative – Thriving



# Our Agency's Key Links

- Agency Website: <https://www.cityofmadison.com/fleet-service>
- Key Report(s):
  - [Biennial Report, 2023](#)
- [APM 2-13 Policy Regarding City Vehicle Driver Policy](#)

# Our Agency's Acronyms

Common acronyms used by our agency include:

**B5, B20, and B100**

- Fuel blends denoting the percentage of biodiesel (5%, 20%, and 100%).

**CO2**

- Carbon dioxide. We track all pounds of CO2 reduced through our implementation of hybrid vehicles, EVs, biodiesel, and the installation of solar panels on our facility.

**EVs**

- Electric Vehicles. We are continuously adding EVs to the fleet to reach our goal of eliminating nearly all carbon dioxide emissions by 2030.

**GPS**

- Global Positioning System. Public Works equipment has Geotab GPS units installed.

**OS**

- Out of Service. We track the time that any piece of equipment is down and not available for service.

**PM**

- Preventative Maintenance. Regular service performed on equipment to keep it running well into its planned useful life.

# OUR CITY OF MADISON



## Let's Connect!

Mahanth Joishy, Fleet Superintendent

[mjoishy@cityofmadison.com](mailto:mjoishy@cityofmadison.com)

(608) 246-4546

CITY OF MADISON