



Neighborhood Indicators Project (NIP)

Urvashi Martin
Planning Division



Overview

- Background
- About
- Usage and Audience
- How to access NIP
- How to use NIP – Quick Tour Function

Background

Purpose:

- Support understanding of neighborhood conditions and trends.
- Make data more accessible for smaller geographic areas

Administrative Structure:

- Data compilation, analysis and dissemination by the UW Applied Population Lab.
- Funding and oversight from City of Madison Planning Division.

Data release

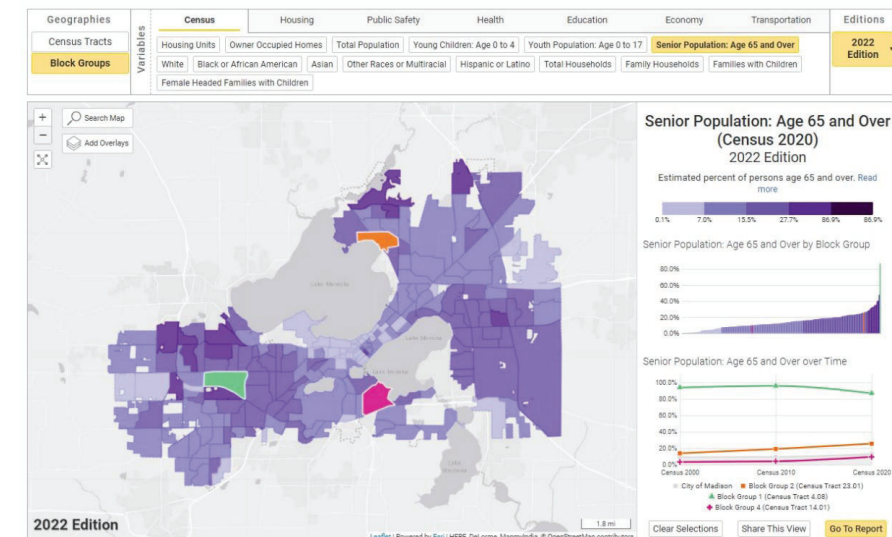
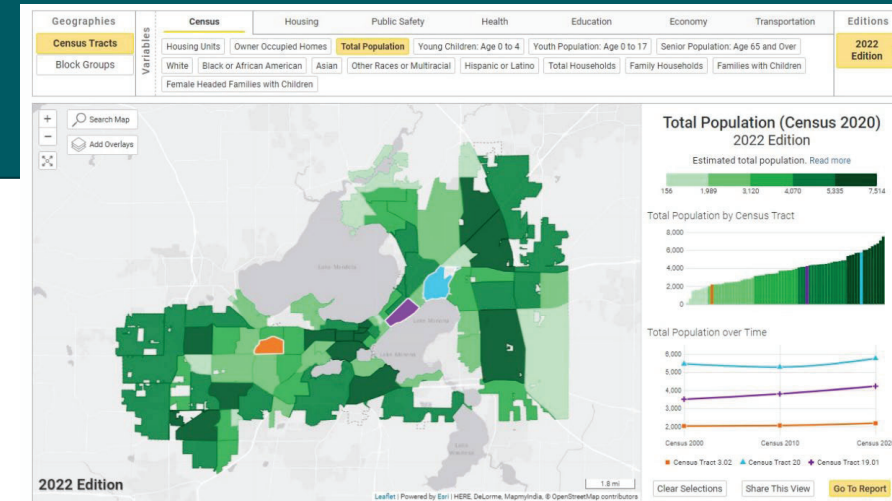
- Recent switch to two years

Geographies

- Recent switch to Census geographies – Tracts and Block Groups
- Data available at City, Census Tracts, and Block Groups

Edition

- Release of the data



About the NIP – Data Sources

City Departments

- Planning
- Police
- Fire
- Assessor
- Metro Transit
- Engineering
- Clerks Office
- Public Health
- Building Inspection
- Community Development

External Providers

- MMSD
- UW Madison and Edgewood College Housing Offices
- UW Cooperative Extension
- Wisconsin DOT

US Census Bureau


- Decennial
- American Community Survey (ACS)

About the NIP - Geographies

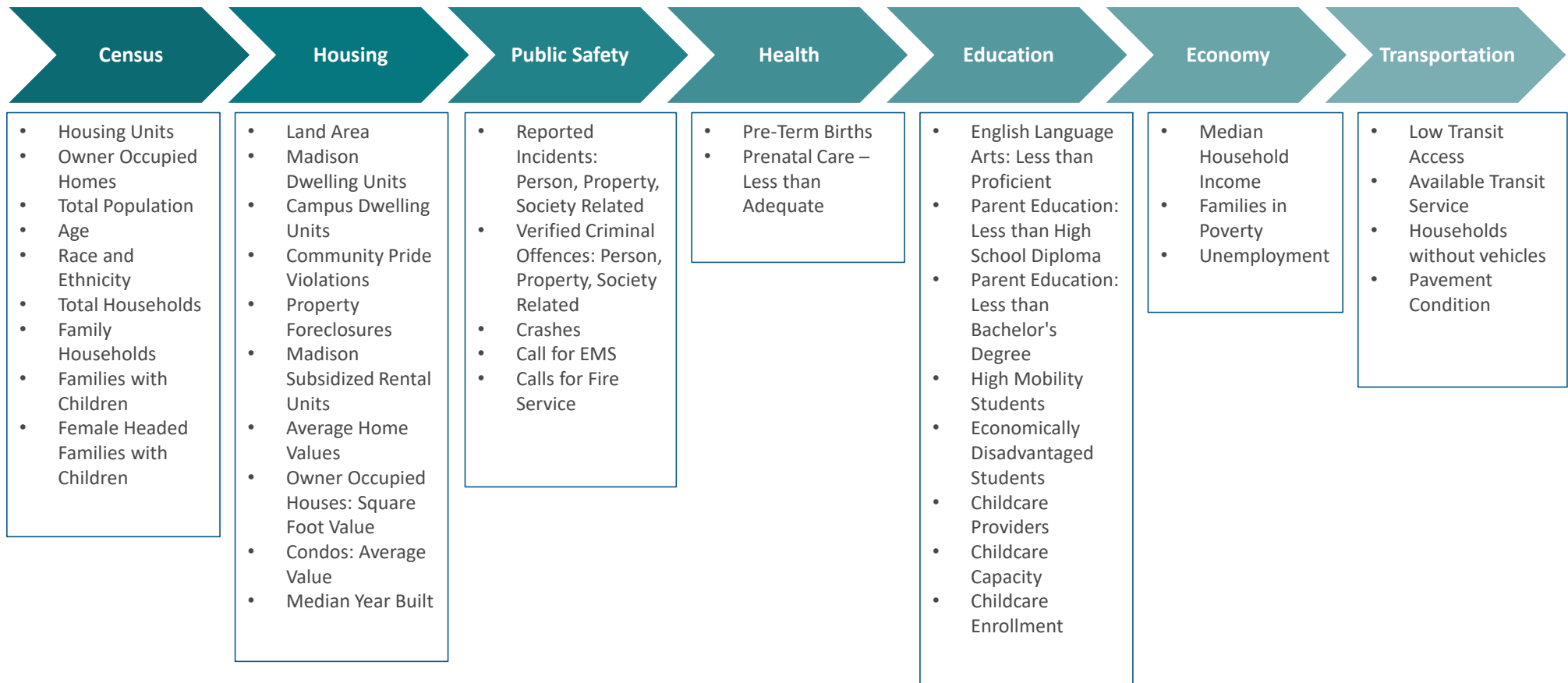
- Data is available for download for three geographies
- Recent switch to Census geographies – Tracts and Block Groups

Geographies

- City
- Census Block Groups
- Census Tracts

Total Population				
Location	Census 2000	Census 2010	Census 2020	Change between 2000 and 2020 Census
● City of Madison	213,534	238,053	274,622	61,088 
■ Block Group 1 (Census Tract 4.02)	1,254	1,238	1,311	57 
▲ Block Group 4 (Census Tract 20)	1,838	1,784	2,017	179 

About the NIP – Topics and Variables



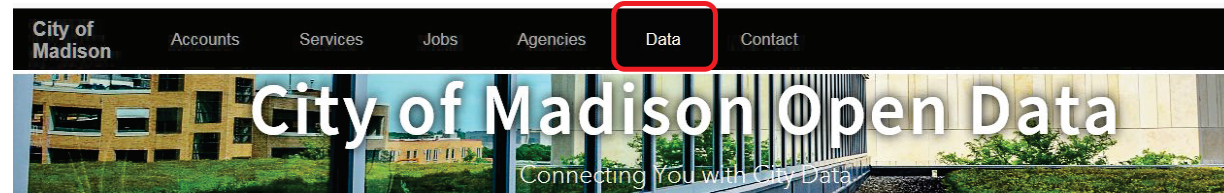
Usage and Audience

- Who can use the NIP?
 - NIP can be used by anyone, including community-based organizations, non-profits, education institutions, the business community, and government officials and staff
- Example uses of NIP
 - writing grants
 - comparing neighborhood wellness by specific indicators
 - City agencies use such Traffic Engineering for Pedestrian/Bicycle Enhancement Program
 - helping neighborhood organizations build capacity

Neighborhood Indicators Project (NIP)

- How to access it


<https://madison.apl.wisc.edu/> or on the City main web page




Scroll
down to

Understanding Our City

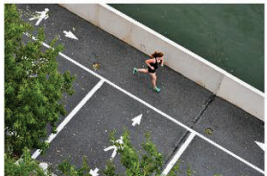
Data can help us plan better. Use these tools to make informed decisions about City services, sustainability and more.




Neighborhood Indicators
View key markers that tell us about the quality of life in Madison neighborhoods.



Healthy Dane
See current Dane County community health and population data.



Active Living Index
Find out how accessible various walking, biking and transit routes are from your location.



Imagine Madison
See how we're using resident feedback to improve the City's Comprehensive Plan!

Neighborhood Indicators Project (NIP)

- How does it work?

? Quick Tour

The screenshot shows the NIP interface with a 'Quick Tour' overlay. The 'Geographies' panel on the left has three options: 'Census Tracts', 'Block Groups' (highlighted in yellow), and 'Block Groups'. The 'Variables' panel on the right has two tabs: 'Census' (selected) and 'Housing'. Under the 'Census' tab, there are four variable options: 'Housing Units', 'Owner Occupied Homes', 'White', and 'Black or African American', 'Asia', and 'Female Headed Families with Children'. The 'Housing' tab is currently inactive. The map below shows the United States with a blue dot indicating the current location. The 'Quick Tour' overlay is a dark grey box with white text, titled 'Choose A Geography'. It contains the following text: 'There are two available geography types: Census Tracts and Block Groups. The currently selected geography is shown in yellow. To change your view, click on the name of the geography type you want to see.' At the bottom of the overlay are three buttons: 'Previous', 'Next', and 'End Tour'.

Thank you!



Neighborhood Indicators Project Contact: Urvashi Martin umartin@cityofmadison.com (608) 267-8735
Website: <https://madison.apl.wisc.edu/>