

City of Madison Streets & Urban Forestry Division

ONBOARDING VIDEO #1

Agency Introduction and Organization Chart

March 2023



What is the StUF Division mission?

Provide a clean, safe, welcoming atmosphere for City of Madison residents, businesses, and guests by providing high quality, cost-effective, and essential public works services.



What does the Streets Division do?





What does Urban Forestry do?





2023 RECYCLOPEDIA

Contents

- Using your Collection Carts 3
- Refuse Collection 5
- Recycling Collection 7
- What to Put in the Green Recycling Cart 9
- Large Item Collection Guidelines 11
- Electronics Recycling 14
- Brush Collection 15
- Brush Processing Center 16
- Leaf, Yard, and Garden Waste Collection 17
- Drop-Off Sites 19
- Urban Forestry 21
- Moving Days 23
- Stop Food Waste 24
- Winter Information 25
- Disposal and Recycling Guide 26
- Streets Division Information 32

TELEVISIONS, COMPUTERS, MONITORS & LAPTOPS FREE TO RECYCLE

For 2023, televisions, computers, monitors, and laptops will be free to recycle for City of Madison residents.

You must take these items, and other electronics, to the drop-off sites. No work orders are necessary for these items.

This change in longstanding procedure is thanks due to changes in the electronics recycling marketplace that allow this to occur on a temporary basis.

WHO TO CONTACT

Curbside Collection, Drop-Off Sites, Street Sweeping, Pothole Repair, and Snow Plowing Issues

For areas east of South Park Street:	For areas west of South Park Street:
» Streets East: 4602 Sycamore Ave., 608-246-4532	» Streets West: 1501 W. Badger Rd., 608-266-4681
» Office hours: 7:30am-4:00pm, Monday to Friday	» Office hours: 7:30am-4:00pm, Monday to Friday

For recycling information:

- » Recycling Coordinator: 1501 W. Badger Rd., 608-267-2626
- » Office hours: 7:30am-4:00pm, Monday to Friday

Urban Forestry Issues

- » Urban Forestry: 1402 Wingra Creek Parkway, 608-266-4816
- » Office hours: 7:00am-3:00pm, Monday to Friday
- » Website: www.cityofmadison.com/forestry
- » After-hours tree emergency: 608-255-2345 (Madison Police Non-Emergency Line)

Mulch and Brush Processing

- » Brush Processing Center: 121 E. Olin Ave., 608-266-4911
- » Hours of operation: 7:30am-2:30pm, Monday to Friday

Hotlines

- » Brush & Yard Waste: 608-267-2088
- » Winter Parking: 608-261-9111
- » Special Charges: 608-243-5899

Online

- » Report problems: www.cityofmadison.com/reportaproblem
- » www.cityofmadison.com/streets
- » Email: streets@cityofmadison.com

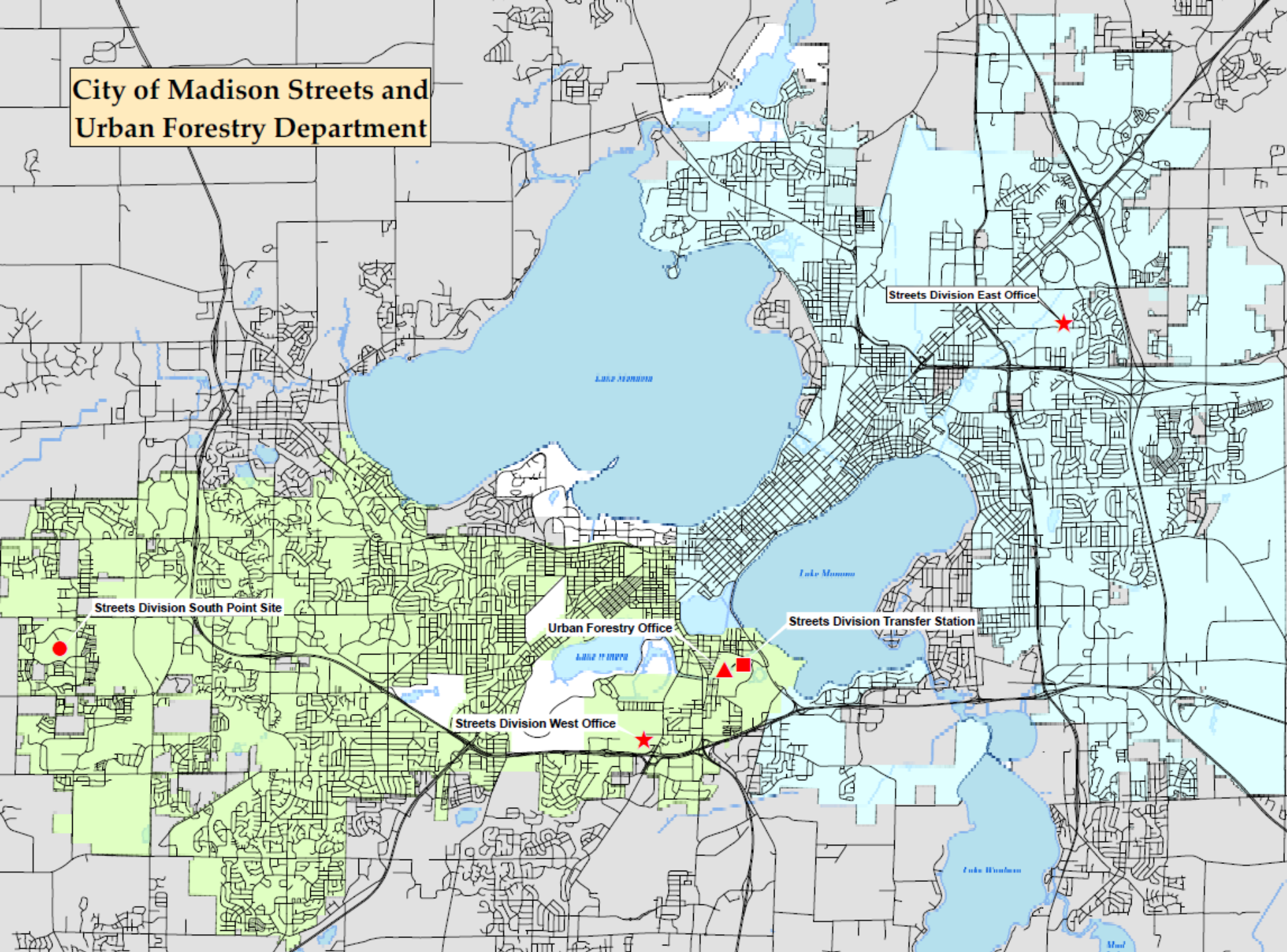
STAY INFORMED

Services described in this book may change over time. The Streets Division's website will have the most current information. Residents are encouraged to sign up to receive News Releases and other communications from the City of Madison at www.cityofmadison.com. And, be sure to follow the City of Madison on your social media platforms.

Where to get more information?

- Recyclopedia
- Streets Division websites:
 - www.cityofmadison.com/Streets
 - www.cityofmadison.com/Recycling
 - www.cityofmadison.com/Forestry
 - www.cityofmadison.com/FoodScraps
 - www.cityofmadison.com/eCycle
 - www.cityofmadison.com/LargeItem
 - www.cityofmadison.com/DropOffSites
 - www.cityofmadison.com/Winter
 - www.cityofmadison.com/YardWaste
 - www.cityofmadison.com/BrushCollection

**City of Madison Streets and
Urban Forestry Department**



**Office
Phone
Numbers**

Streets West
608-266-4681

Streets East
608-246-4532

Forestry
608-266-4816



Charlie Romines

Streets Division
Superintendent &
Public Works Lead

Roger Kleist –
Assistant Streets Superintendent



Craig Klinke – City Forester (Interim)



Bryan Johnson – Recycling Coordinator / Public Information Officer



Contact Information

Bryan Johnson (PIO)

608-267-2626

byjohnson@cityofmadison.com

streets@cityofmadison.com

Charlie Romines (Streets Superintendent)

608-266-4680

cromines@cityofmadison

Craig Klinke (City Forester, Interim)

608-266-4816

cklinke@cityofmadison.com

forestry@cityofmadison.com

Roger Kleist (Assistant Superintendent)

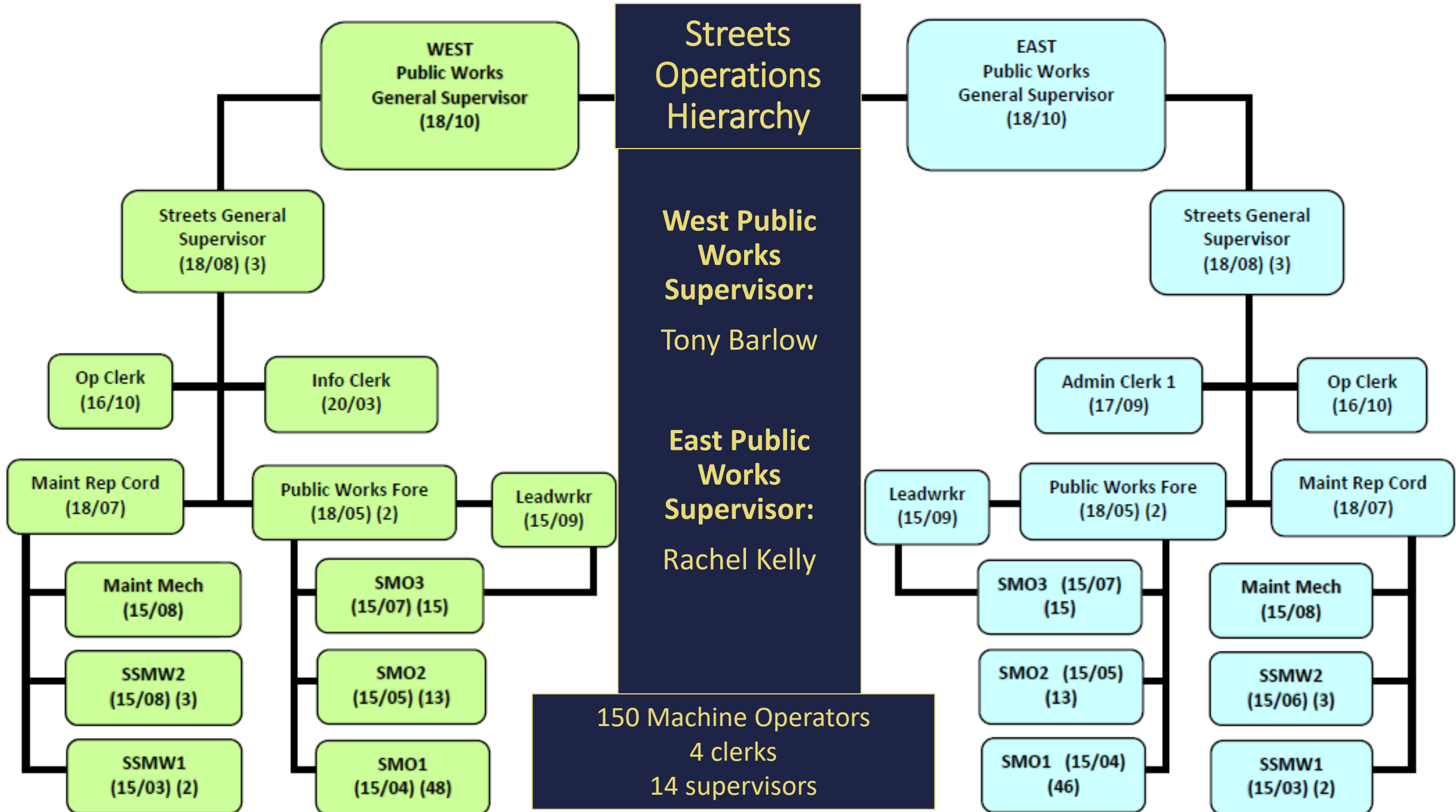
608-246-4535

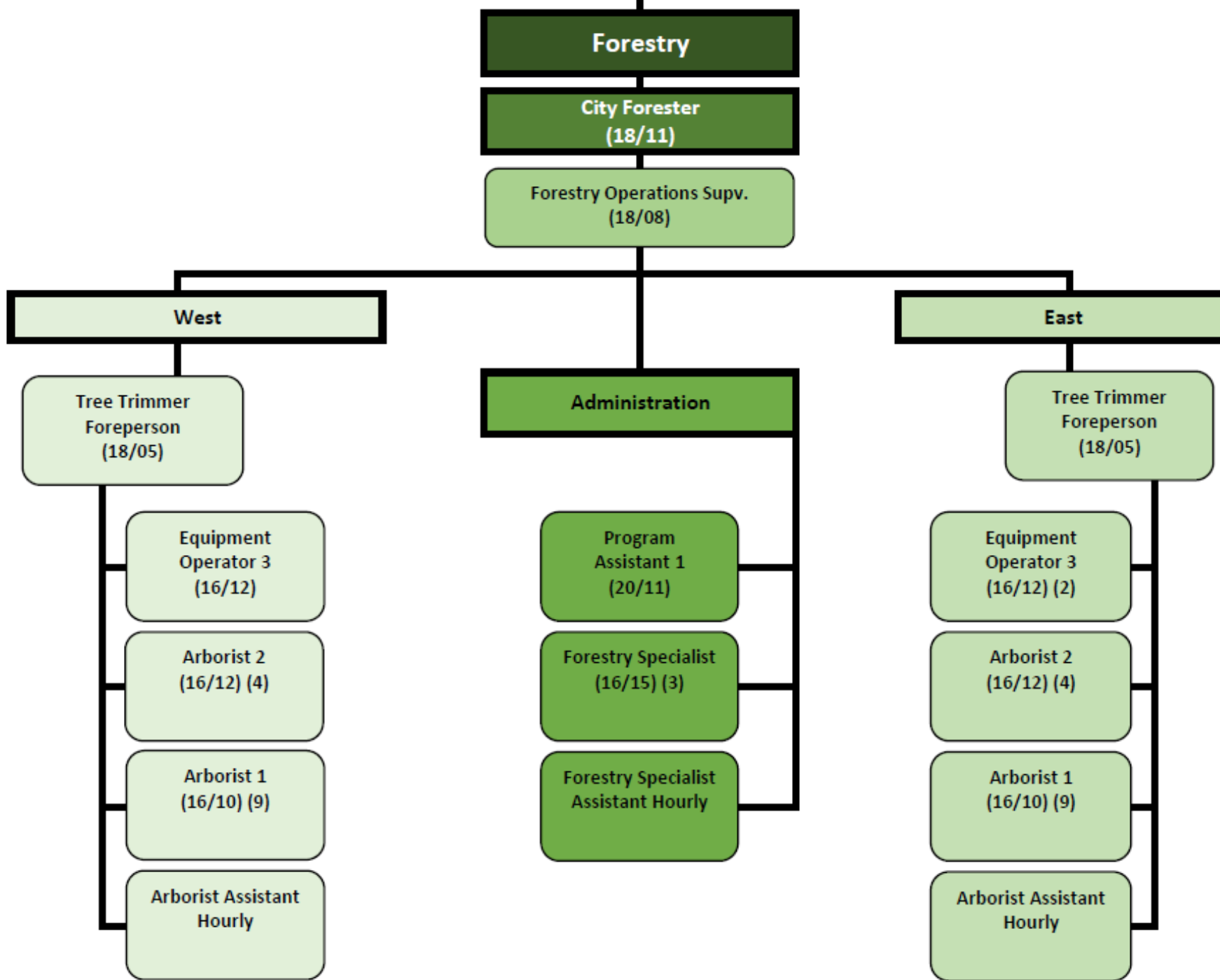
rkleist@cityofmadison.com

Report – a – Problem

[www.cityofmadison.com/
ReportAProblem](http://www.cityofmadison.com/ReportAProblem)

Bikeway Concerns	+
Brush Collection	+
Graffiti	
Mailbox Damaged by a City Snow Plow	
Recycling Collection	+
Refuse Collection	+
Refuse & Recycling Carts	+
Snow Removal	+
Tree Concerns	+
Weeds & Overgrown Vegetation	





Urban Forestry Hierarchy

City Forester:
Craig Klinke, interim

29 individuals are handling the planting & pruning of trees in the right-of-way.

Other Streets Division Positions

Public Works Laborer

- Lead Worker (2) (15/09)
 - Laborer (10) (15/02)

Laborer & lead worker positions will float between Public Works agencies

Olin Avenue Transfer Station & Brush Processing

Process Plant Supervisor (18/08)

- Operating Assistant (15/09)
- Operating Maintenance Workers (6) (15/07)

GIS Specialist (18/10)

Streets Operations Analyst (18/10)

- Accounting Tech (20/13)



Charlie Romines (Streets Superintendent)

608-266-4680

cromines@cityofmadison

Bryan Johnson (PIO)

608-267-2626

byjohnson@cityofmadison.com

streets@cityofmadison.com

www.cityofmadison.com/Streets