

TIF Loan Locations

TIF District

25 Wilson St Corridor

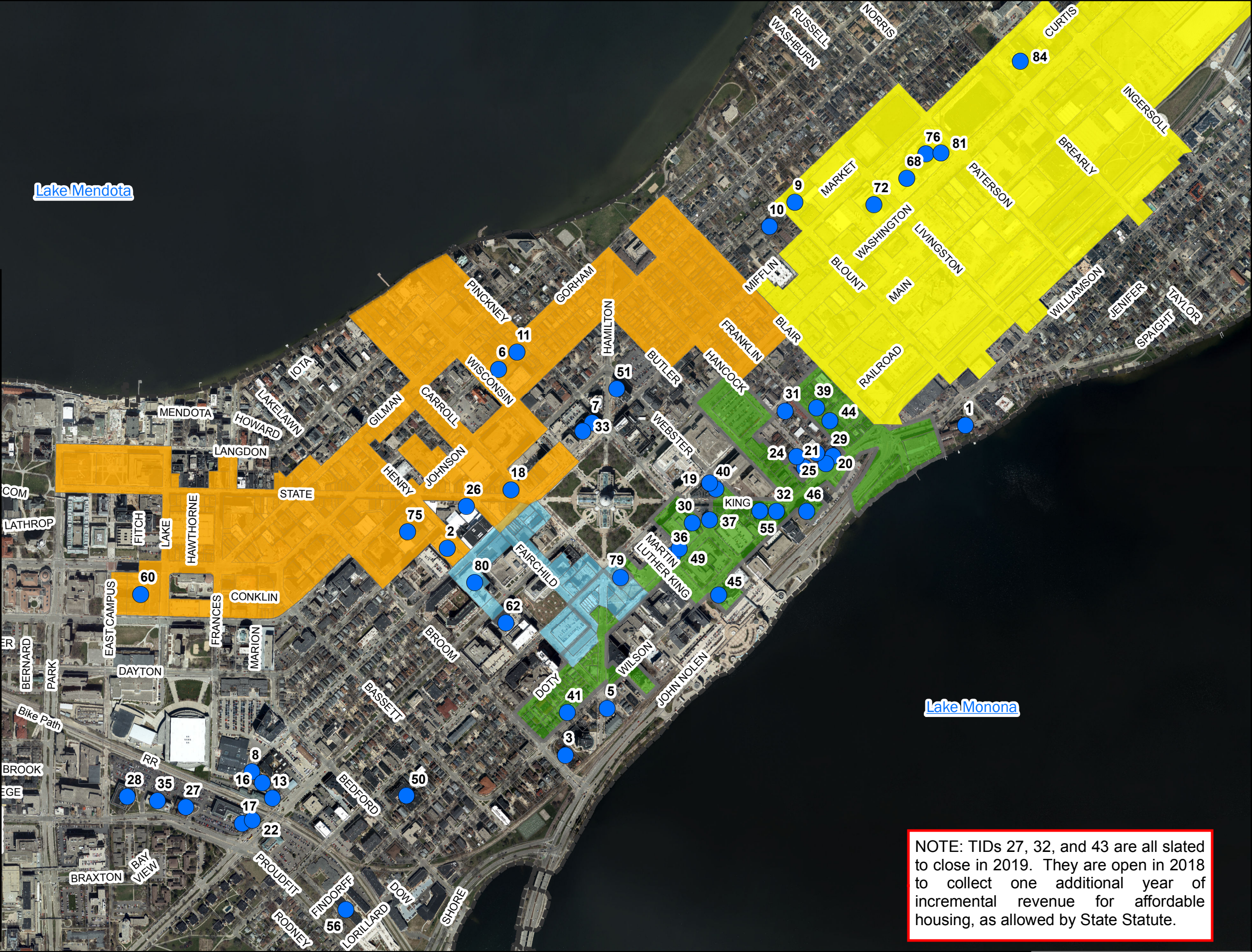
32 Upper State St

36 Capitol Gateway

43 Park / Drake

45 Capitol Square West

Downtown TIF Loans				
ID #	Year	Project Name	TID	Loan Amount
1	1979	Fauerbach Condos	3	\$530,000
2	1980	Capitol Centre	15	\$2,945,000
3	1981	Doty School Condos	28	\$215,000
5	1988	Hamilton Point	16	\$200,000
6	1988	Wisconsin and Gorham	14	\$505,000
7	1989	44 on the Square	14	\$1,425,538
8	1989	899 W Mifflin	19	\$410,000
9	1989	Das Kronenberg	17	\$400,000
10	1989	Dayton Row	19	\$295,000
11	1989	21 \ 25 E. Gorham Rehab	14	\$152,000
13	1989	Historic Depot	19	\$300,000
16	1989	The Depot	0	\$300,000
17	1990	City Station	19	\$340,000
18	1990	Madison Children's Museum	14	\$80,000
19	1990	The Argus	15	\$74,000
20	1991	E. Wilson Apts	15	\$300,000
21	1992	144 \ 146 S. Hancock St	15	\$25,000
22	1992	City Station	19	\$175,000
24	1992	Hancock Court	15	\$125,000
25	1992	Hancock St Rehab	25	\$15,000
26	1992	Yost's Acquisition (Overture)	32	\$720,000
27	1993	700 Regent St	19	\$450,000
28	1993	780 Regent St	19	\$630,000
29	1993	Cleveland Lunch	16	\$37,300
30	1993	Hooley Opera House	25	\$35,750
31	1994	407 E. Main St	15	\$28,000
32	1994	McManus Office Bldg	15	\$90,400
33	1995	Mullins Plaza	14	\$2,990,000
35	1996	740 Regent St	19	\$400,000
36	1996	Block 89	25	\$20,640,000
37	1996	Cantwell Building	15	\$33,600
39	1996	Franklin Condos	15	\$190,000
40	1997	108 S Webster	5	\$84,000
41	1997	Block 49 - Condos	14	\$445,000
44	1997	Germania Condos	15	\$185,000
45	1998	Hilton Madison	25	\$12,970,000
46	1998	Union Transfer	25	\$550,000
49	2000	Block 89	25	\$6,800,000
50	2000	Bedford Court	14	\$1,000,000
51	2000	Capitol Point	15	\$2,492,000
55	2003	Madison Mark	25	\$1,000,000
56	2003	Tobacco Warehouses	28	\$553,000
60	2005	University Square	32	\$3,000,000
62	2006	Capitol West	28	\$4,274,000
68	2011	Don Miller (Acquisitions)	36	\$5,556,000
72	2012	Constellation	36	\$3,432,000
75	2013	Ovation 309	32	\$3,025,000
76	2014	Galaxie	36	\$4,417,000
79	2015	Anchor Bank	45	\$13,317,000
80	2015	AT&T	45	\$2,050,000
81	2015	Galaxie II	36	\$1,433,000
84	2015	Madison Dairy	36	\$3,450,000
Subtotal				\$105,087,586
Citywide TIF Loans				\$46,782,800
Total TIF Loans through Dec 31, 2017				\$151,870,386



NOTE: TIDs 27, 32, and 43 are all slated to close in 2019. They are open in 2018 to collect one additional year of incremental revenue for affordable housing, as allowed by State Statute.