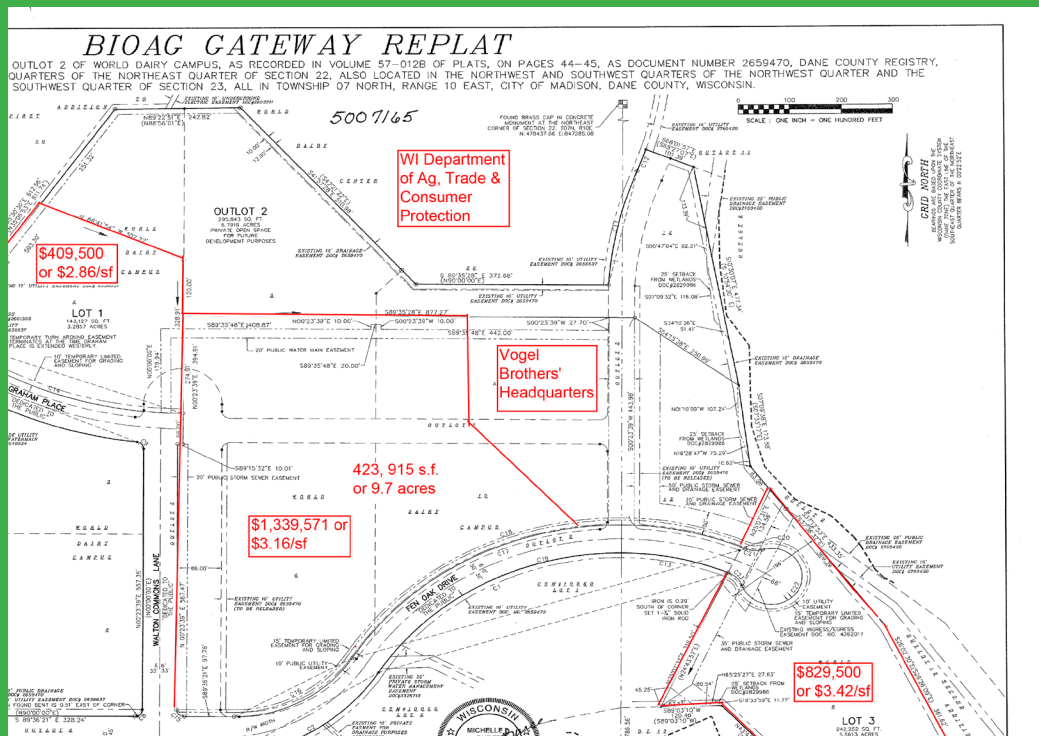


Southeast Madison Business Park



Property Highlights

- City-owned land for sale
- Three parcels remaining: a 3.3-acre parcel, a 9.7-acre parcel, and a 5.6-acre parcel
- Municipal water and sewer serving each lot
- Zoned suburban employment for office and corporate headquarter development
- New streets constructed in 2014
- Two minutes to U.S. Hwy 51
- Four minutes to I-90/94
- Attractive setting
- 4% brokerage commission



Tom Otto
Economic Development Specialist
City of Madison | P.O. Box 2983 | Madison, WI 53701

608.243.0178
totto@cityofmadison.com
www.cityofmadison.com