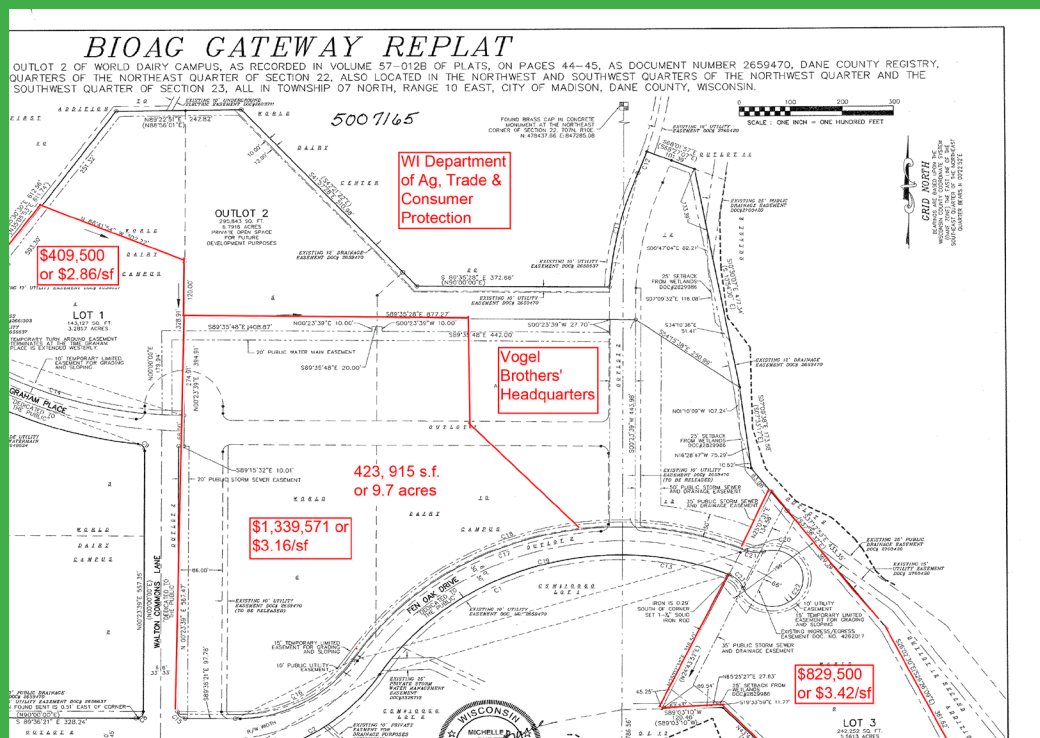


Southeast Madison Business Park



Property Highlights

- Land for development
- Three parcels remaining: 3.3 acre, 9.7 acre, and 5.6 acre parcel
- Municipal water and sewer serving each lot
- Zoned Suburban Employment (SE) for office and corporate headquarter development
- New streets constructed in 2014
- Two minutes to U.S. Hwy 51
- Four minutes to I-90/94
- Attractive setting
- 4% brokerage commission



Tom Otto
Economic Development Specialist
City of Madison | P.O. Box 2983 | Madison, WI 53701

608-243-0178
totto@cityofmadison.com
www.cityofmadison.com